

HINTS FOR COPING WITH STORMS

- Whenever possible, it is best to pile snow to the right of the driveway (as you face the street) to reduce the potential of having it redeposited at the driveway opening when the plow passes.
- When clearing driveways, snow should be kept on the owner's property, the tree lawn or in the gutter. Snow should not be deposited onto the street or sidewalk, or across the street onto a neighbor's sidewalk.
- To avoid having to do the job twice, shovel the driveway after the storm has passed and the street has been cleared.
- Rarely is the collection of trash and recyclables interrupted due to a winter storm. However, bundles of newspapers and recycling bins can become buried in the snow. Please consider keeping the recyclables for collection on your next recycle day if a storm is predicted.
- Prevent street flooding by clearing catch basins near your home to allow rain or melting snow to enter the drainage system.
- Older residents and / or persons with health problems should consult a physician before shoveling snow.
- In the interest of you and your neighbor's safety, shovel and clear fire hydrants of snow in your neighborhood.



VOLUNTEER ASSISTANCE

A limited number of volunteer snow shovelers may be available to assist senior citizens or handicapped persons with financial hardship

Contact the Council on Aging at (617) 993-2970 to Volunteer or for assistance



NO OVERNIGHT PARKING

General Bylaw 60-805C prohibits on-street parking for over one (1) hour in Belmont between the hours of 1:00 A.M. And 7:00 A.M.

SNOW EMERGENCY PARKING BAN

Under Section 260-805F of the Town Bylaws, the Board of Selectmen may declare a Snow Emergency Parking Ban for additional hours when no parking is allowed on any street. The Bylaw was passed to allow the Highway Division to do a better job clearing the roadways. Parked cars force us to leave snow in the road and make the plow operator's job very difficult. If declared, the parking ban will be announced on Stations WBZ, WCVB, WHDH, myTV38, WLVI and WFXT and affiliated radio stations as well as radio stations 99.5 WCRB and 90.9 WBUR. If time permits, it will also be announced on Cable Channel 8 and the Town of Belmont's News and Notices Section located on-line at www.belmont-ma.gov. Vehicles that are in violation of the parking ban will be towed.

SNOW REMOVAL

At times, it may be necessary to remove snow from business districts and municipal parking lots. When snow removal is scheduled or in progress, temporary "Snow Removal—No Parking" signs will be posted.

Thank you for your cooperation. By working together, we will minimize the inconvenience and maximize the safety in coping with winter weather.

Town of Belmont

Department of Public Works

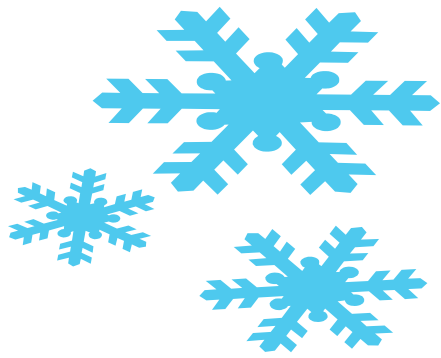


THE TOWN OF BELMONT WOULD LIKE TO THANK ALL RESIDENTS FOR FOLLOWING THE SIDEWALK BYLAW. IT HAS BEEN A SUCCESSFUL PROGRAM BECAUSE OF YOU.

For residential sidewalk clearing enforcement information call the Office of Community Development at 617-993-2664

Winter Storm Information

**SNOW EMERGENCY HOTLINE
617-993-2698**



SNOW AND ICE CONTROL POLICY

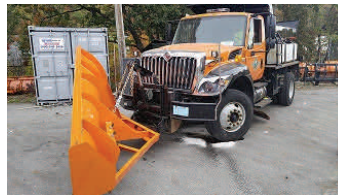
The Town of Belmont's snow and ice control policy is to make the roads passable and reasonably safe considering the weather conditions. During a storm, our objective is to keep the roads accessible for police, fire and ambulance services. After the storm, we strive to make the roads safe for the general public. We are committed to providing an effective, efficient service.

ICE CONTROL OPERATIONS

The Belmont Public Works Highway Division is responsible for treating and plowing more than 86 miles of streets, four municipal parking lots, the parking areas surrounding six public schools and most municipal buildings. The streets in Belmont have been divided into prioritized routes. Primary and secondary streets and hills receive priority attention due to traffic volume and/or potential safety hazards. During light snow and ice conditions, the streets are treated in sequence according to traffic volume or hazardous conditions and made safe as quickly as possible.

PLOWING OPERATIONS

Belmont's streets are divided into plow routes. During significant snow storms, the streets on each route are plowed in sequence and made passable as quickly as possible. While it is snowing, the snowplow operators are instructed to "open up" each route. This means that they will keep at least one lane plowed so necessary police, fire and ambulance services can reach each resident at all times. When the storm abates, the plow operators "widen out" all streets by pushing the accumulated snow back towards the curb line and clearing the intersections. It is important that the operators push the snow back towards the curb line because if we experience an especially snowy winter, the snow will begin to limit the width of the roadway and compromise safety. To avoid shoveling your property several times, residents should wait to clear their driveways until the plowing operation is finished (generally within two hours after the snow has stopped falling). Some residents prefer to clear snow periodically to avoid having to move a lot of snow at one time.



TOWN SIDEWALK CLEARING

Generally, whenever there is a significant snow storm, the Town of Belmont will plow sidewalks as soon as possible on paved public sidewalks adjacent to public property.

RESIDENTIAL SIDEWALKS



Belmont's General Bylaws, Section 60-800I require sidewalks to be cleared on paved public sidewalks adjacent to residential property and made safe for pedestrians. **Residents have until 8:00 pm the day following the end of the storm to clear the sidewalk of snow, slush and ice adjacent to their property to ensure safe pedestrian passage.** Please see Section 60-800I of the General Bylaws for more information. **For enforcement information call the Office of Community Development at 617-993-2664.**

COMMERCIAL SIDEWALKS

Section 60-800H of the Town's General Bylaw applies to owners and/or tenants of commercial property and states that **the owner and/or tenant is responsible for the removal and treatment of ice and snow on the abutting sidewalks within twelve (12) hours** after the same, shall cease to fall or be formed on such sidewalks.

WHERE CAN I PUT THE SNOW?

RESIDENTS AND BUSINESSES ARE REMINDED NOT TO SHOVEL, BLOW OR THROW SNOW ONTO THE STREETS OR PILE IT BLOCKING THE SIDEWALK.

Snow in these locations creates a hazard. Also, we would appreciate reminding your contractor not to shovel, blow or plow snow onto the streets or sidewalks. Section 60-800A of the Town's General Bylaw states in part, "no person, other than an authorized Town agent, shall place or throw or cause to be placed or thrown onto any public sidewalk, street or highway or upon any of the common lands of the Town any snow, dirt, gravel or suffer the same to remain thereon after being notified by a police officer to remove same."

FOR MORE INFORMATION, PLEASE CALL THE BELMONT PUBLIC WORKS - HIGHWAY DIVISION AT (617) 993-2690.