

Family Bike Ride Belmont Halloween 2023 Ride-Planning

About Family Bike Ride

About Halloween Ride

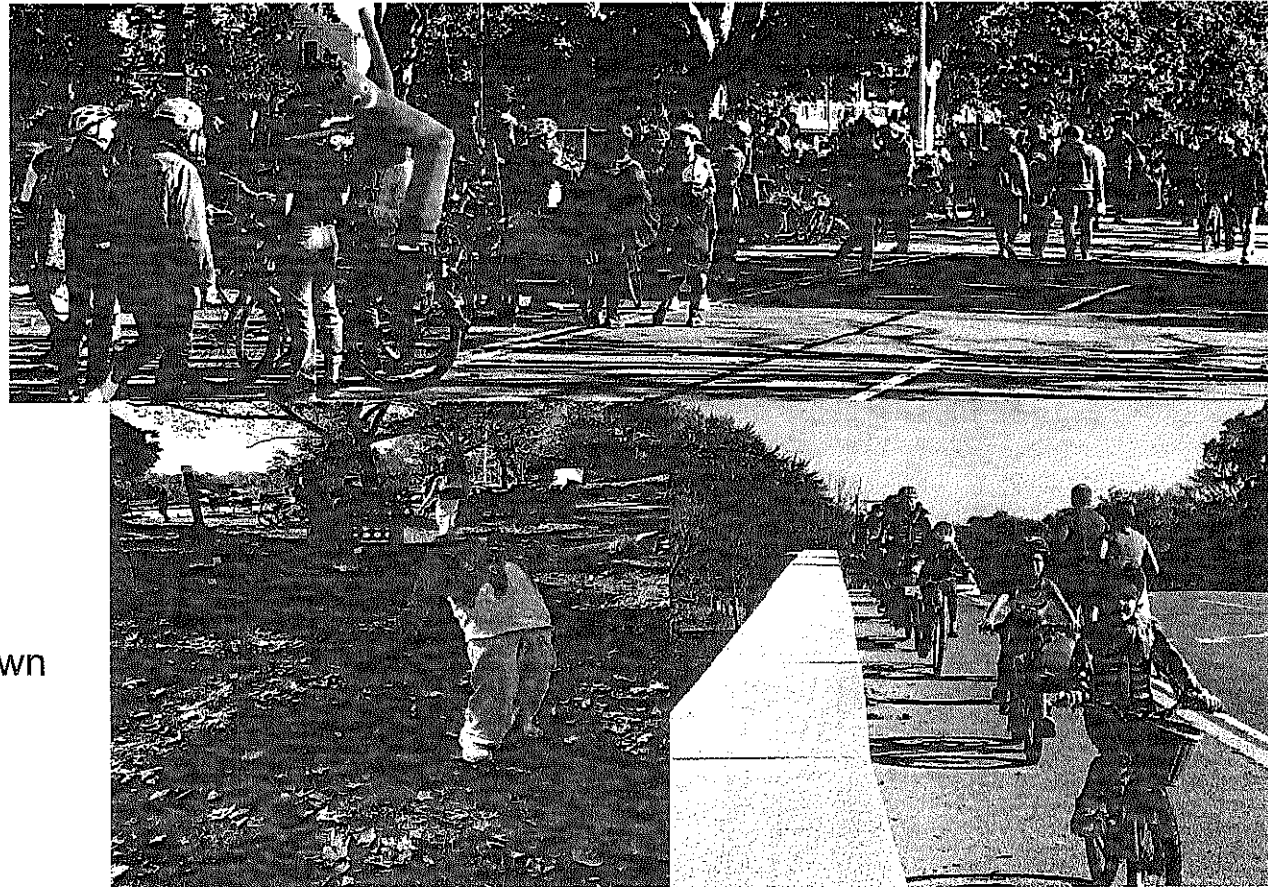
Route

Safety measures

Park Permit

Summary of items to request from town

Other ideas



About Family Bike Ride

Bike ride designed for parents and children

3x per year spring summer and fall

Rotating routes variety / promote different bike routes/destinations

Route length range typically 2-3 miles

Conservatively safe routes combination of off street paths

with supplementary safety measures at auto crossings

Honorary marshals elected officials attend as marshals

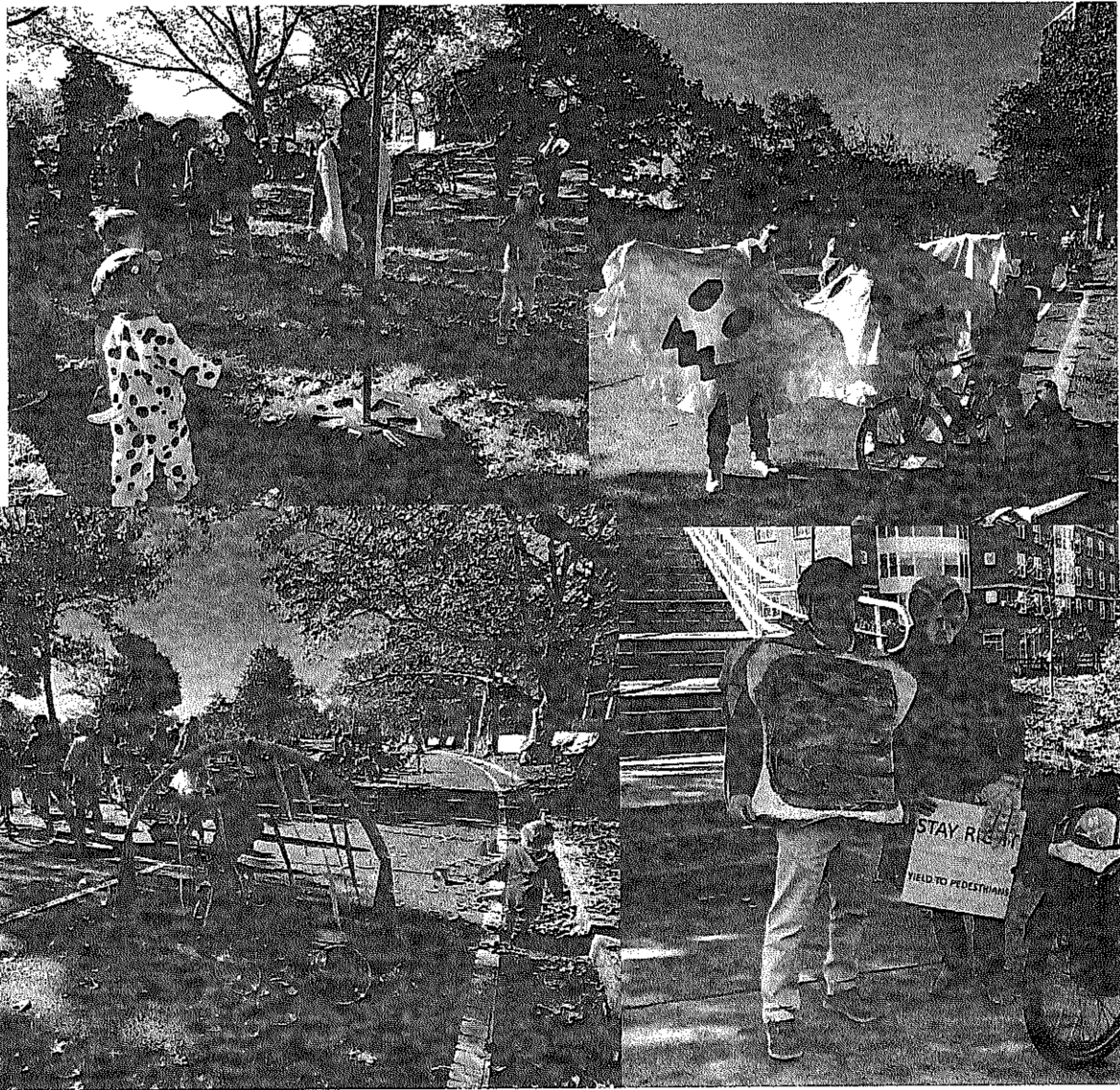
Partnerships with local towns, business groups and bicycle groups

in the towns being featured in a ride

Goal promote bicycling, local businesses, mode shifting by

emphasizing fun and social connections

More at www.FamilyBikeRide.org



About Halloween Ride

2023 will be 3rd annual Halloween Ride

Schedule

9:30-10:15 Bike to Bike Trick or Treating/gathering at Arlington start point

10:15-10:25 Costume Fashion Show and Remarks at Arlington start point

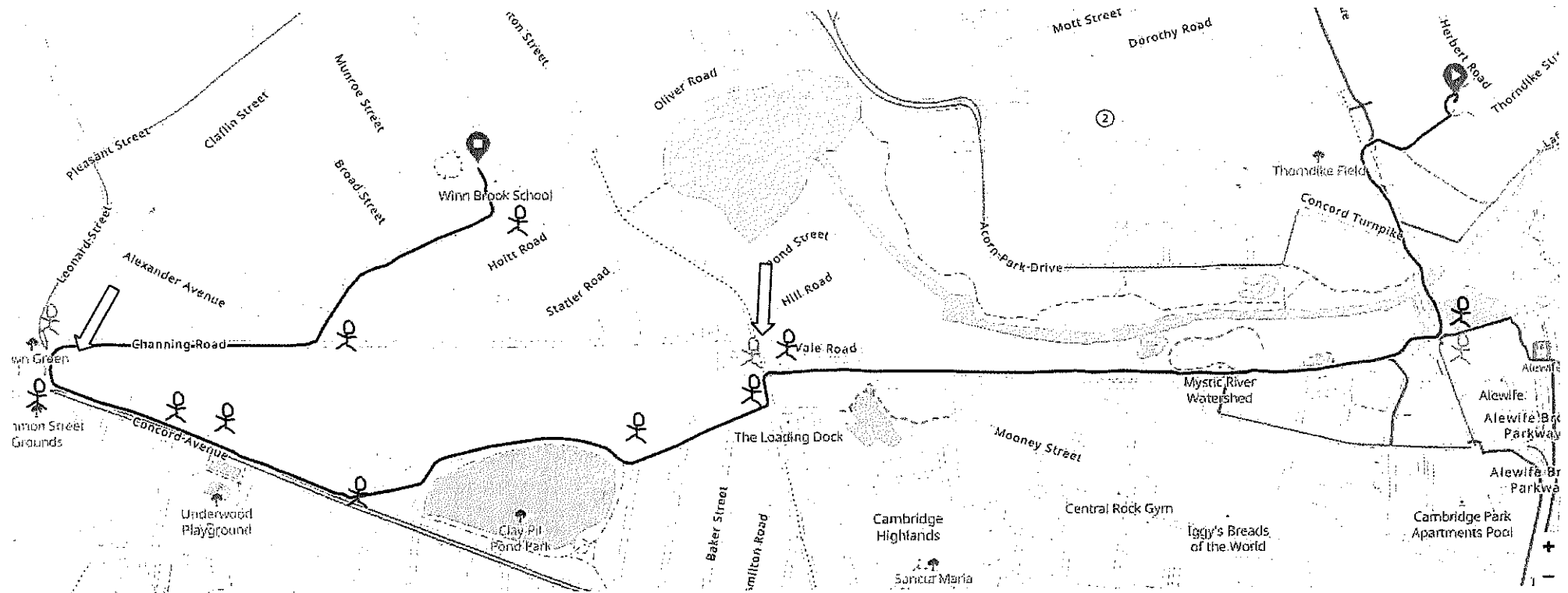
10:25-10:50 Ride Magnolia Park Arlington to Joey's Park

10:50-12:30 PM Play at the Joey's Park

October 22 (29) 2023 event (rain) date. We want rain date to be before Halloween, we also do not want to be too early in October as people don't have costumes ready



Planned Route Map



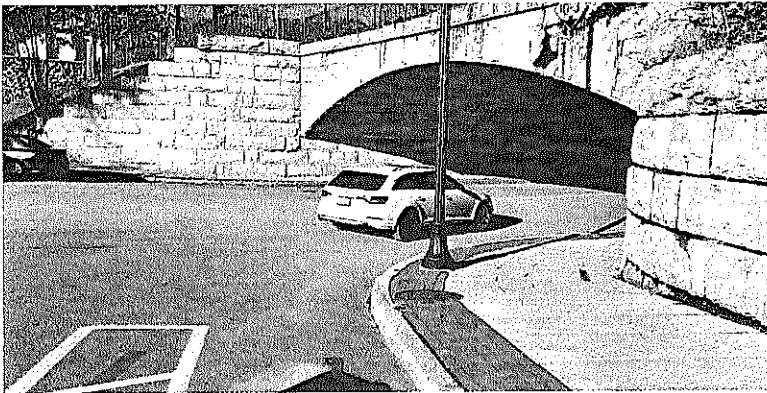
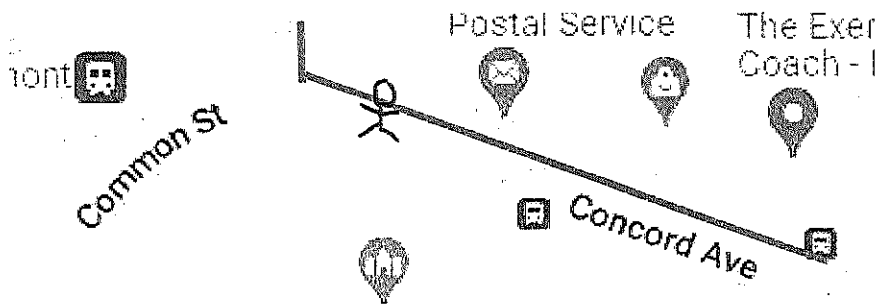
Brighton St



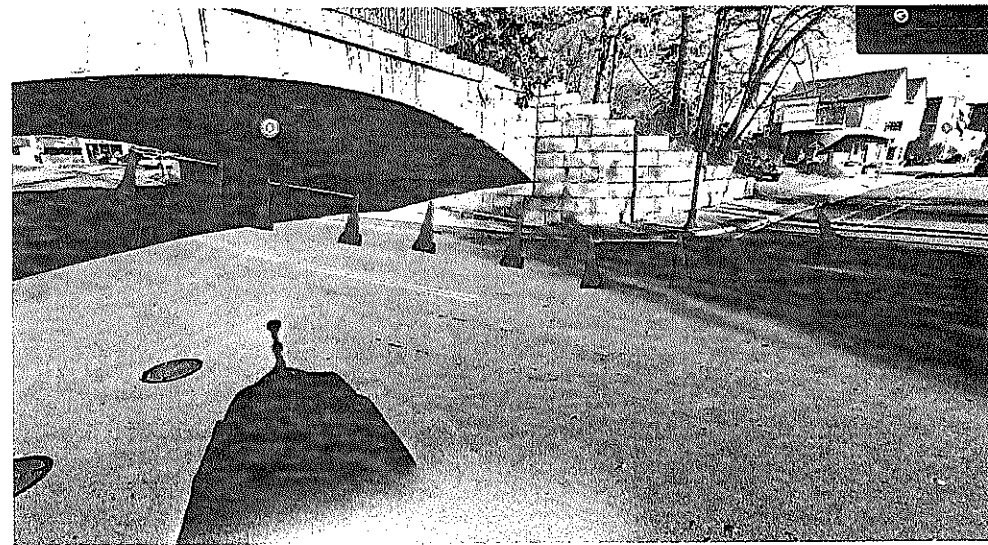
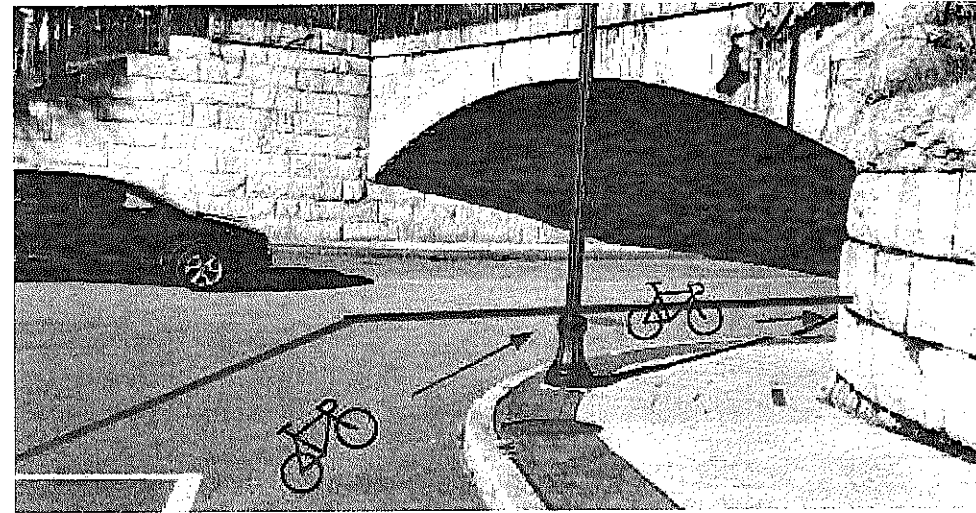
Brighton St would benefit from police detail

- High volume of cars
- No way around it
- ~5 minute crossing of bikes
- Manage to ensure safety of riders, pedestrians, allow timely passage for drivers
- Volunteer marshals can be placed to coordinate with officer

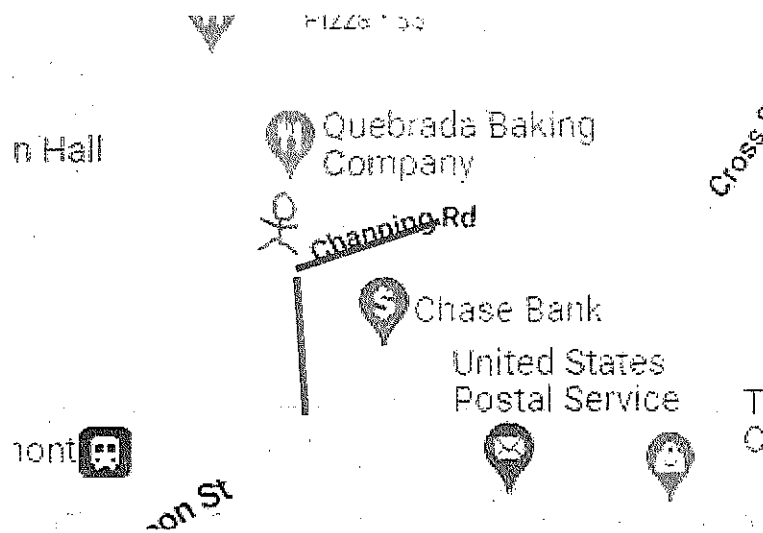
Concord Ave Turn Under Bridge



- Wide road, but cars tend to go to right side, dangerous
- Need to create temp bike lane around the corner, using our or town provided cones tools
- right turn for bikes not a hardship for cars, not an additional crossing



Concord Ave Turn Onto Channing Rd after bridge



Option 1

Would benefit from police detail same reasoning as Hittenger Street

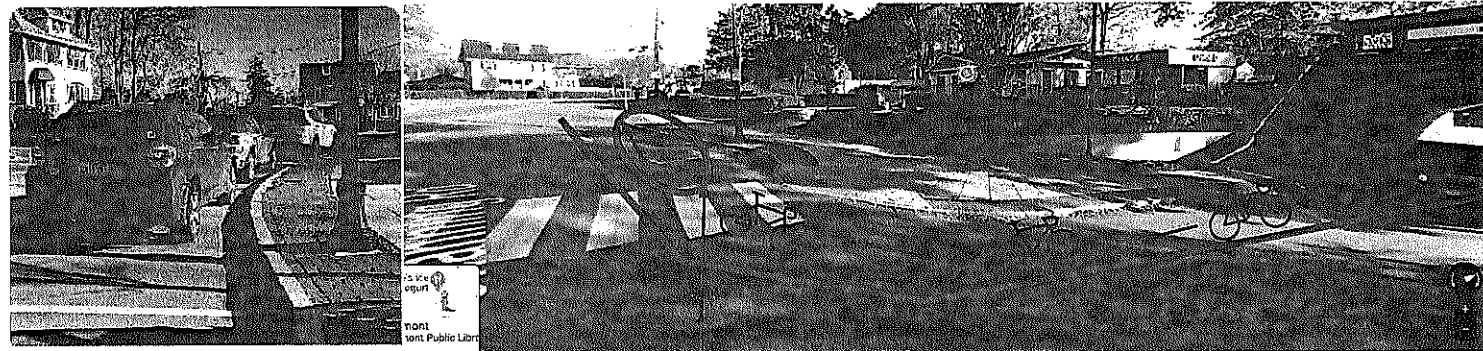
Option 3

Handled by volunteers

Option 2

- Temporarily remove first few spots of parking
- Extend cones to create lane around the corner
- Not a hardship 10-11AM on a Sunday morning
- Remove need for police detail

reporting signs



Joey's Park

Most would probably park in asphalt area to the right of parking lot/basketball courts next to building

Some play equipment (cornhole, frisbees, tetherball)

Sponsor Belmont Wheelworks offering bike test rides

People leave on their own gradually, no group ride back

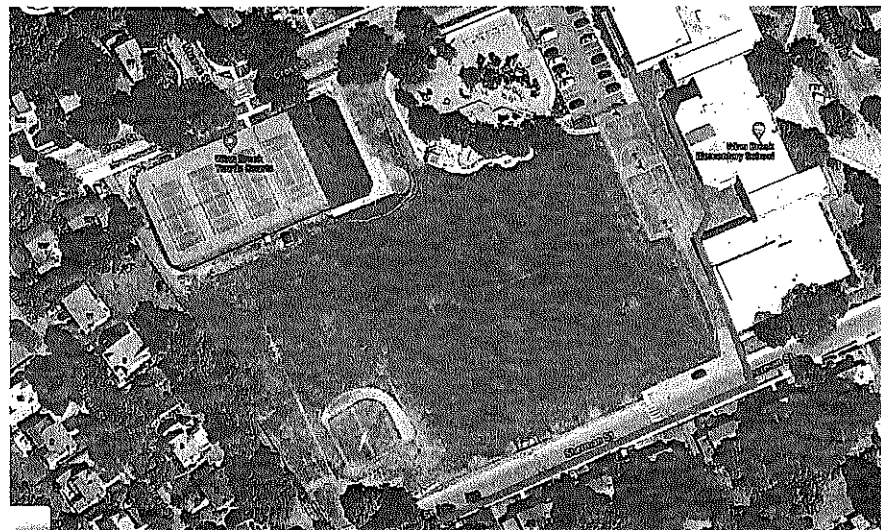
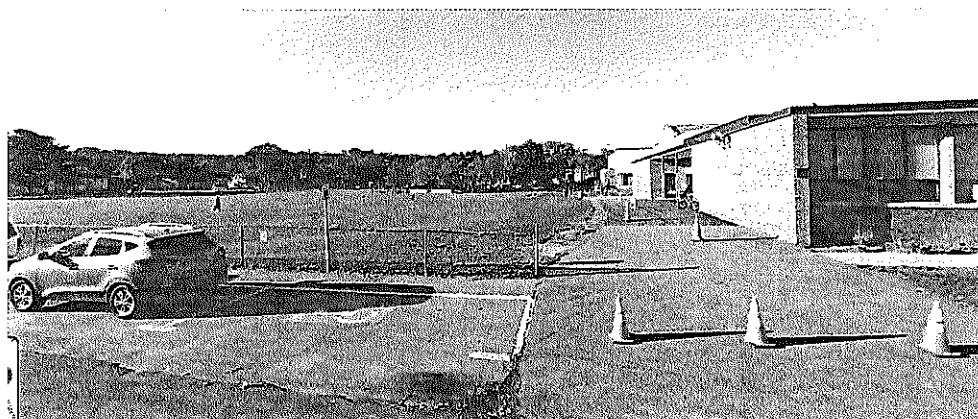
Portable restrooms already in place by town

Need permit from Town of Belmont

Don't need exclusive use but we are a large group

What is sports schedule on Sunday AM?

We would carry out our own trash, which is minimal, and inspect park after event



Summary of needs

Town of Belmont

- Permit to arrive at Joey's Park non exclusive use
- general permit for procession if needed
- police detail helpful to manage crossing at Brighton/Fitchburg Cutoff Path
- police detail helpful to manage crossing at Concord/Channing or temp no parking create a lane

Other ideas

Friends of Belmont Path has information table at Joey Park about Belmonth Community Path

Promote Belmont Center businesses, attempt to get attendees to stop by one after event with coupons, promotions

optional route to include Leonard St-requires greater town support for safety