

Background Materials— Underwood St and Student Parking Permits

BELMONT SELECT BOARD MEETING

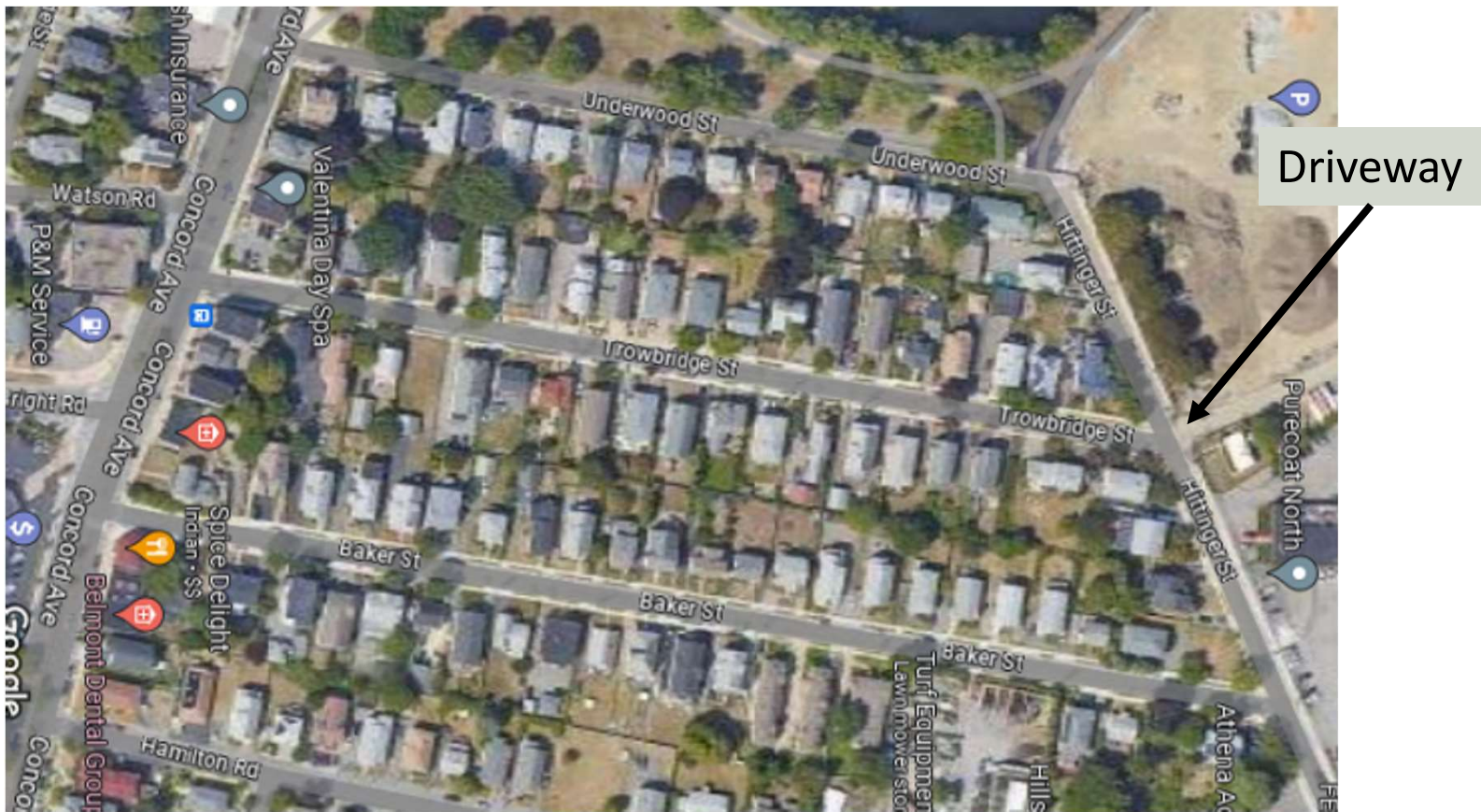
JULY 10, 2023



Underwood St

- Key street for travel to/from new Middle School driveway on Hittinger St
- Currently one-way **northbound** (towards tracks)
- Likely to contribute to traffic congestion on Hittinger/Trowbridge/Baker, especially at morning peak
- Recommendation to reverse direction of travel to one-way **southbound** (towards Concord Ave)

Map of Area



Expected Improved Traffic Flow

- Cars enter driveway from Brighton St side or from Trowbridge St
- Cars exit driveway turning right towards Underwood St
- Better separation between inbound and outbound traffic
- Balances traffic better across streets leading to and from driveway

Parking on Underwood with Southbound Travel

- Parking on left side from Hittinger towards Concord
- Switch to parking on right side near Concord
- Provides traffic calming
- Allows suitable parking space(s) near corner of Concord for handicapped visitors to Veterans Memorial

Support from Town Departments

- Direction of travel and parking plan for Underwood St reviewed and recommended by Belmont Police Department and Office of Community Development