



Belmont Middle and  
High School  
Concord Avenue Update

June 13, 2019



An aerial photograph of a residential street, Concord Ave, showing houses, trees with autumn foliage, and a large green field in the background. A blue text box is overlaid on the left side of the image.

# CONCORD AVE

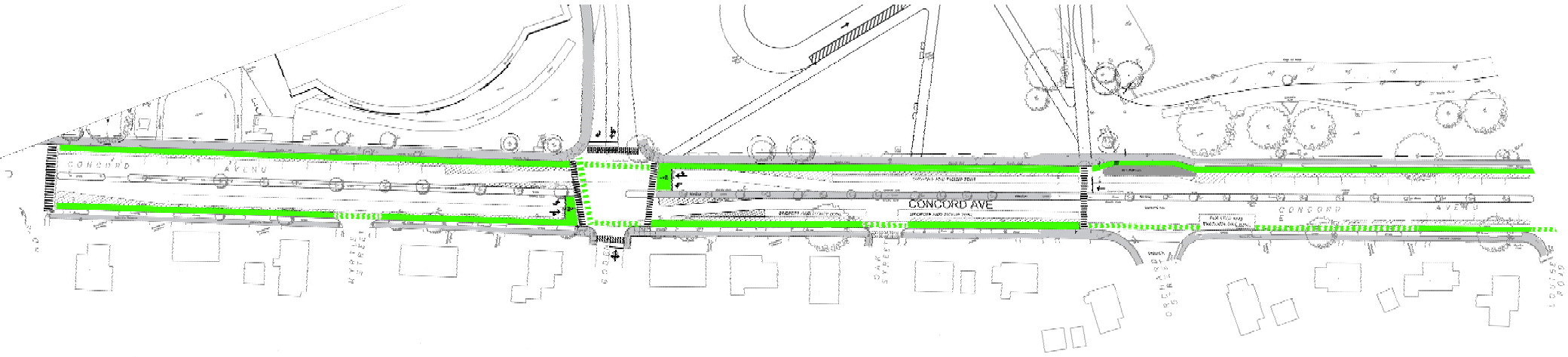
01 | Overview

02 | Goden & Concord

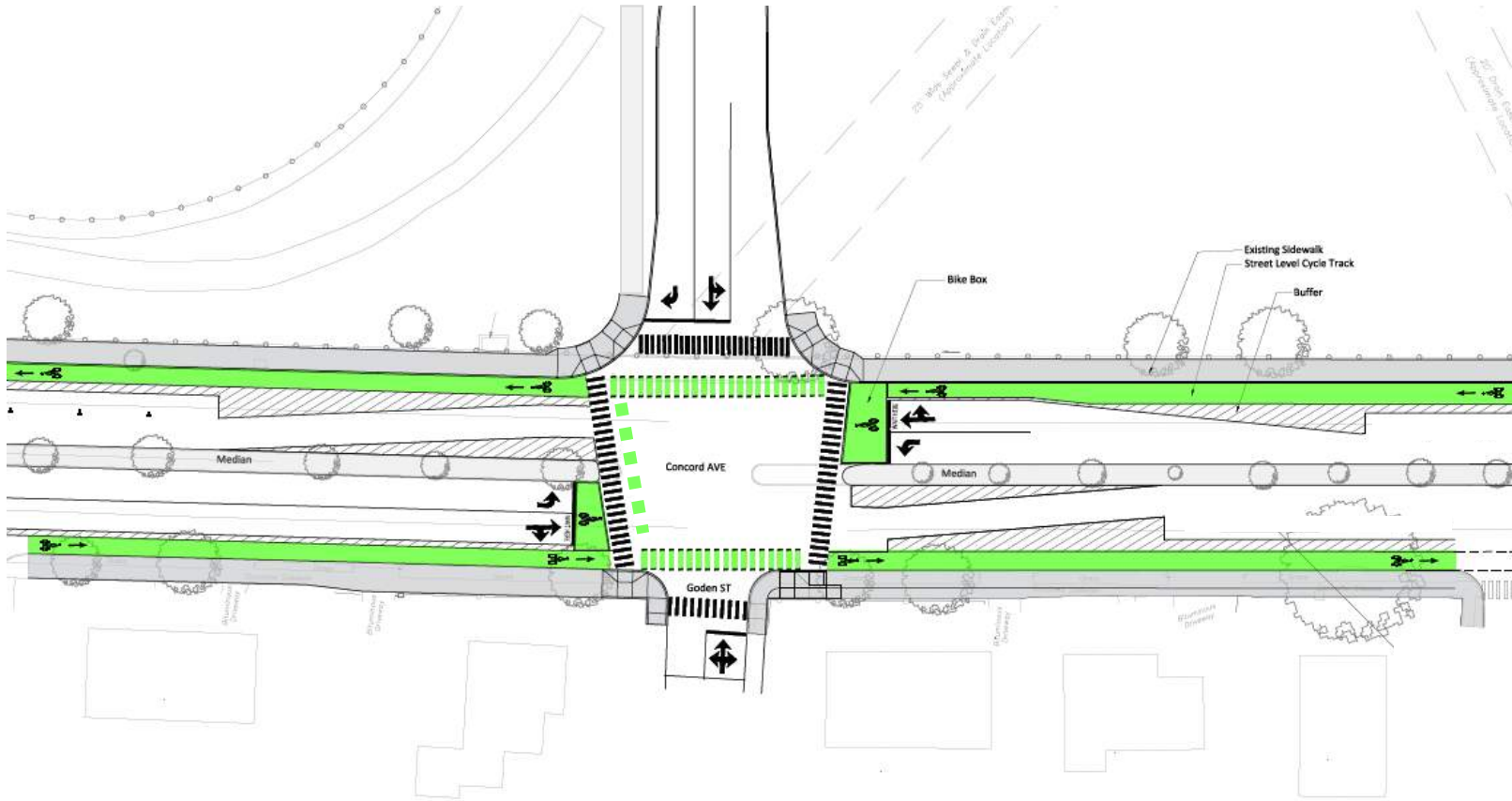
03 | Orchard Crossing



# Concord, Cottage to Louise Overview



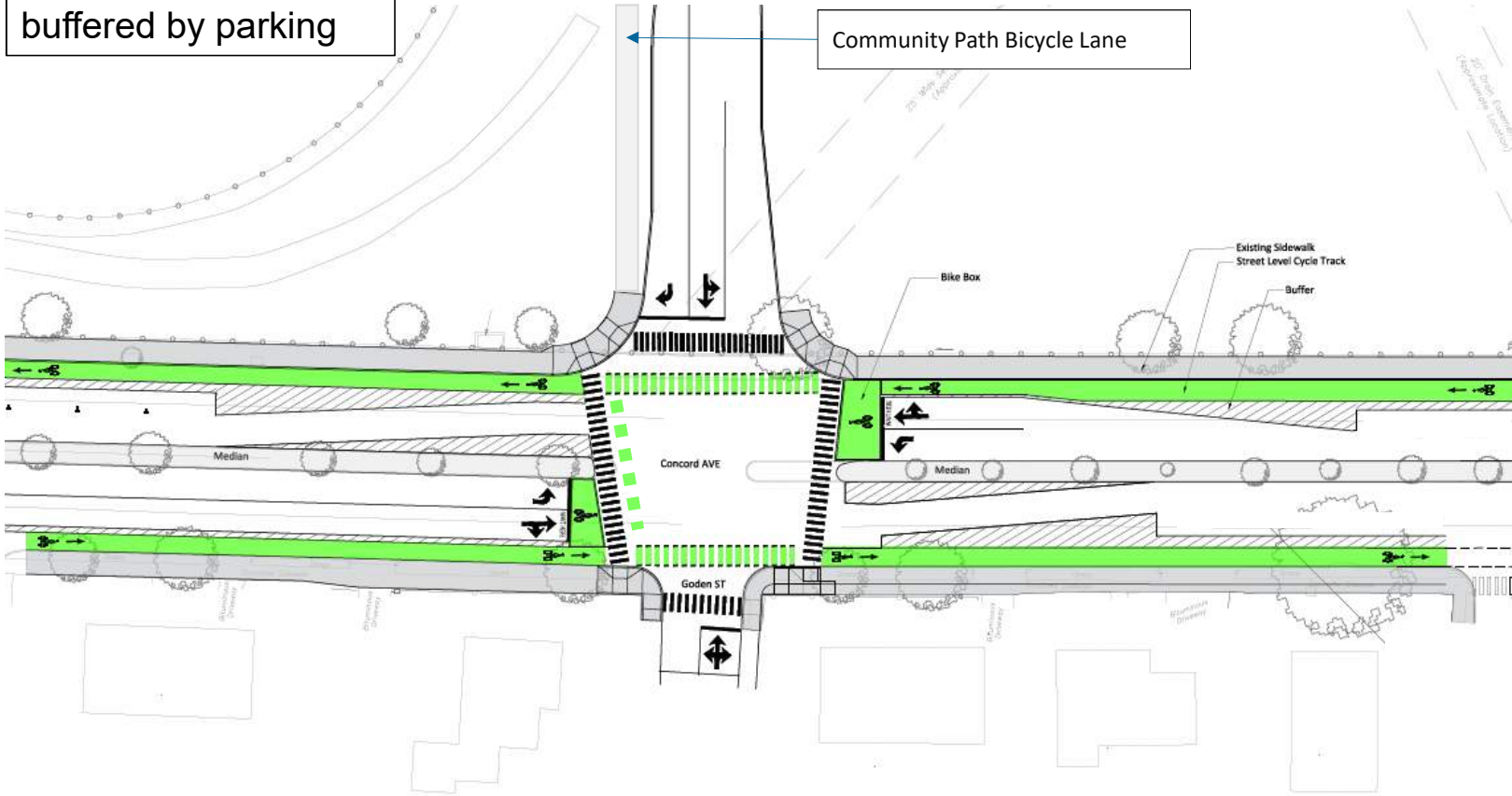
# GODEN & CONCORD - Overview



# GODEN & CONCORD


Street-level bike lane buffered by parking

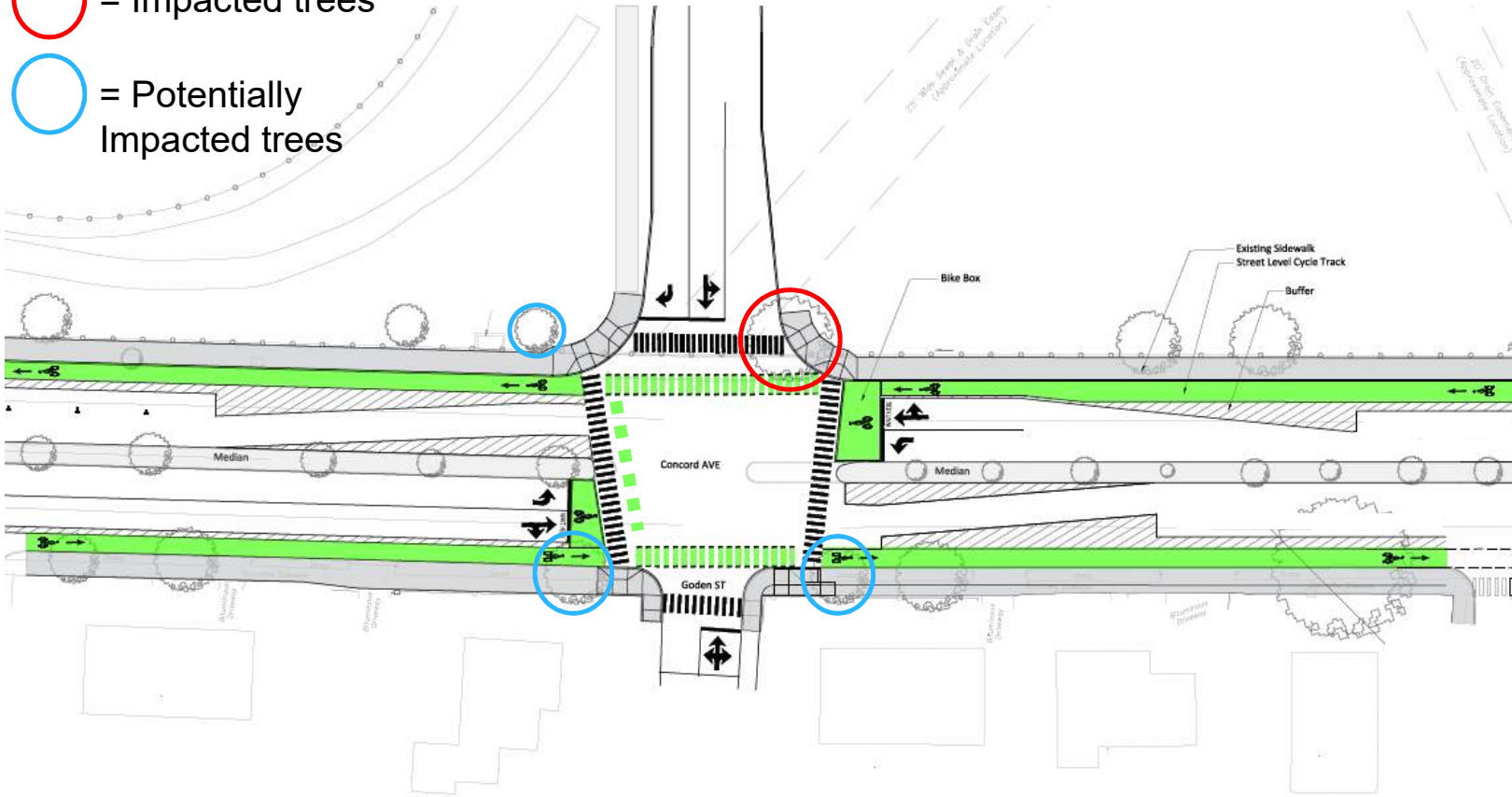
Community Path Bicycle Lane



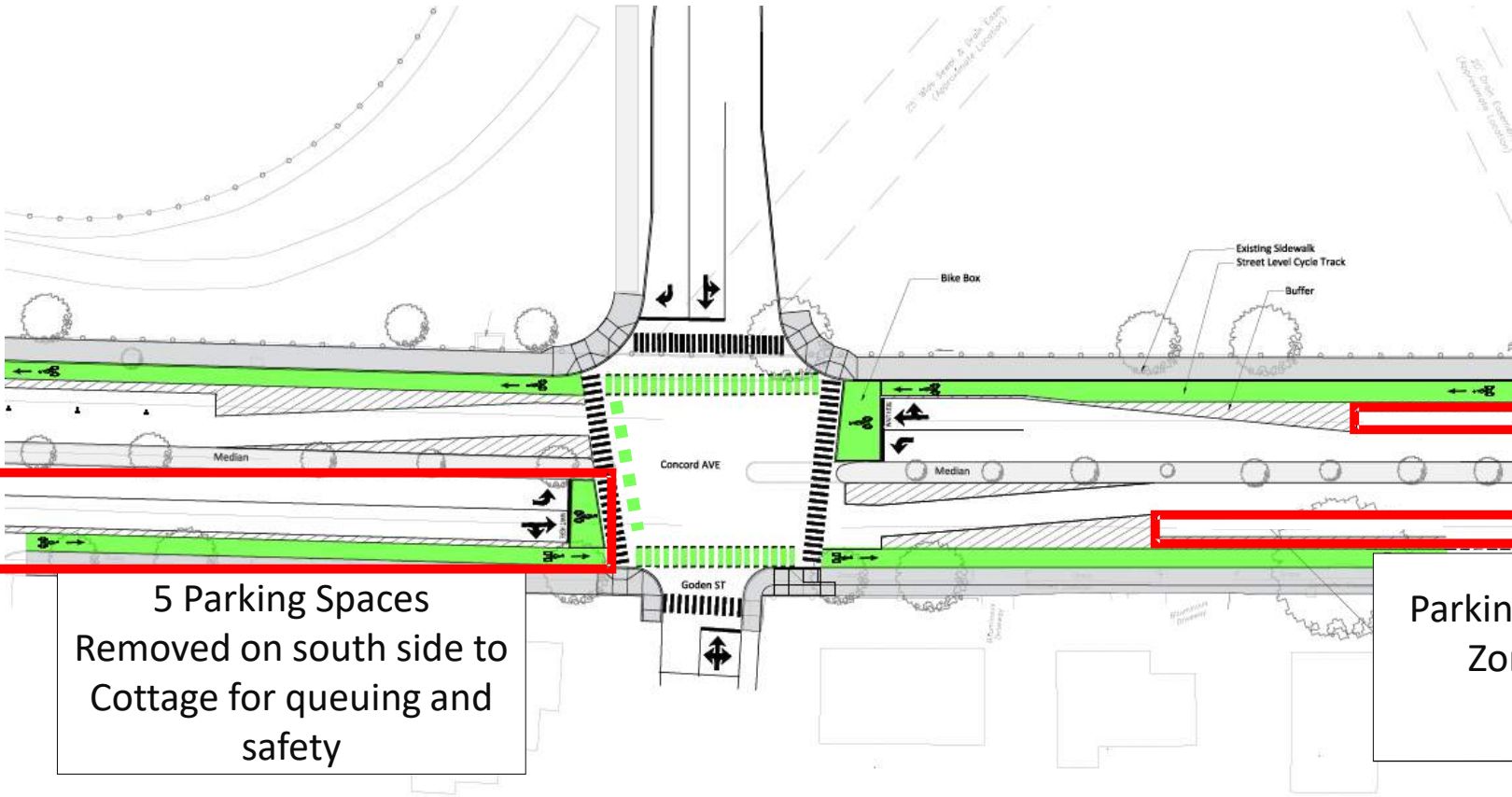
# GODEN & CONCORD

 = Impacted trees

 = Potentially Impacted trees



# GODEN & CONCORD

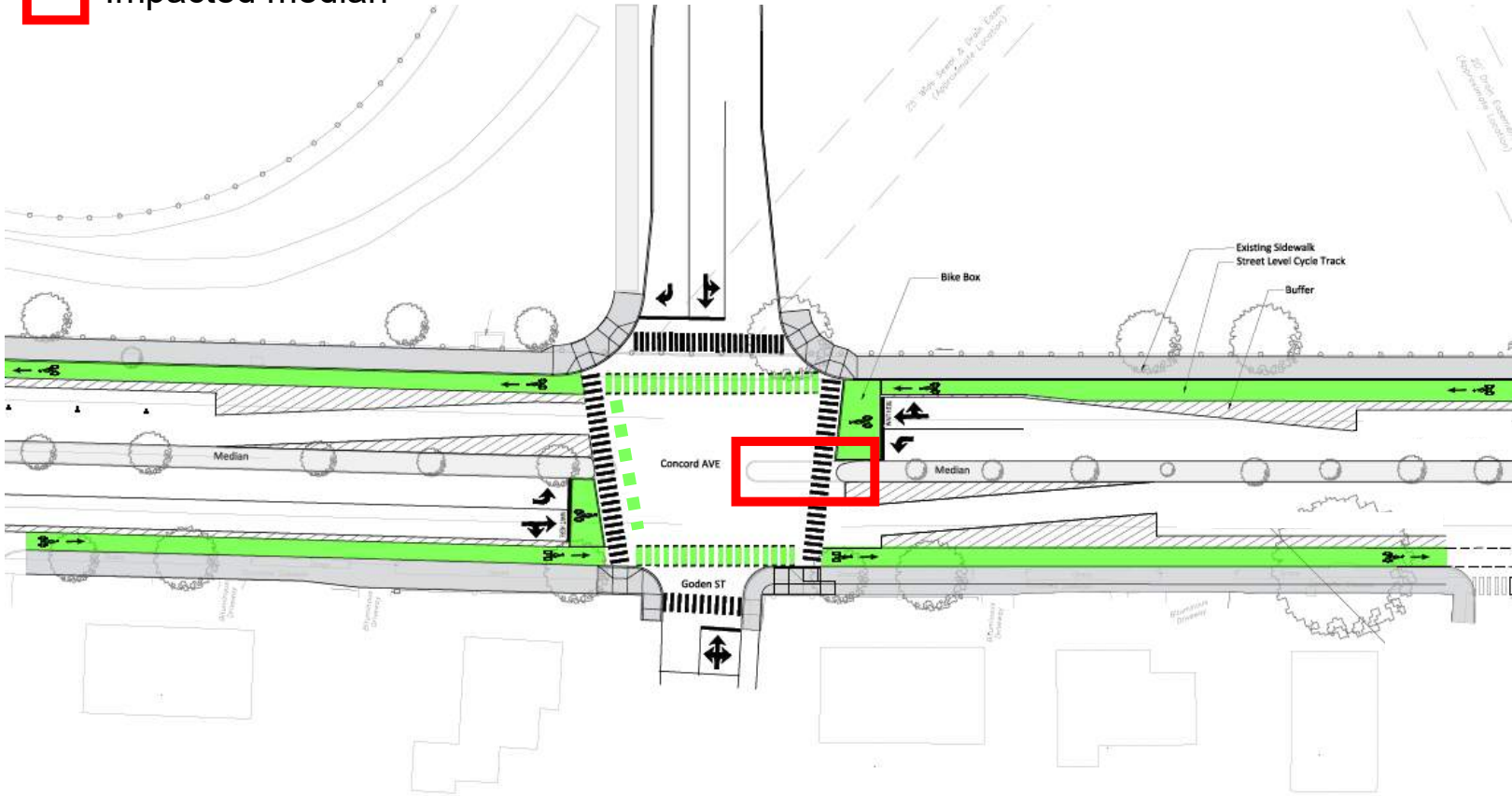


5 Parking Spaces  
Removed on south side to  
Cottage for queuing and  
safety

Parking Removed for Dropoff  
Zones, Eastbound and  
Westbound

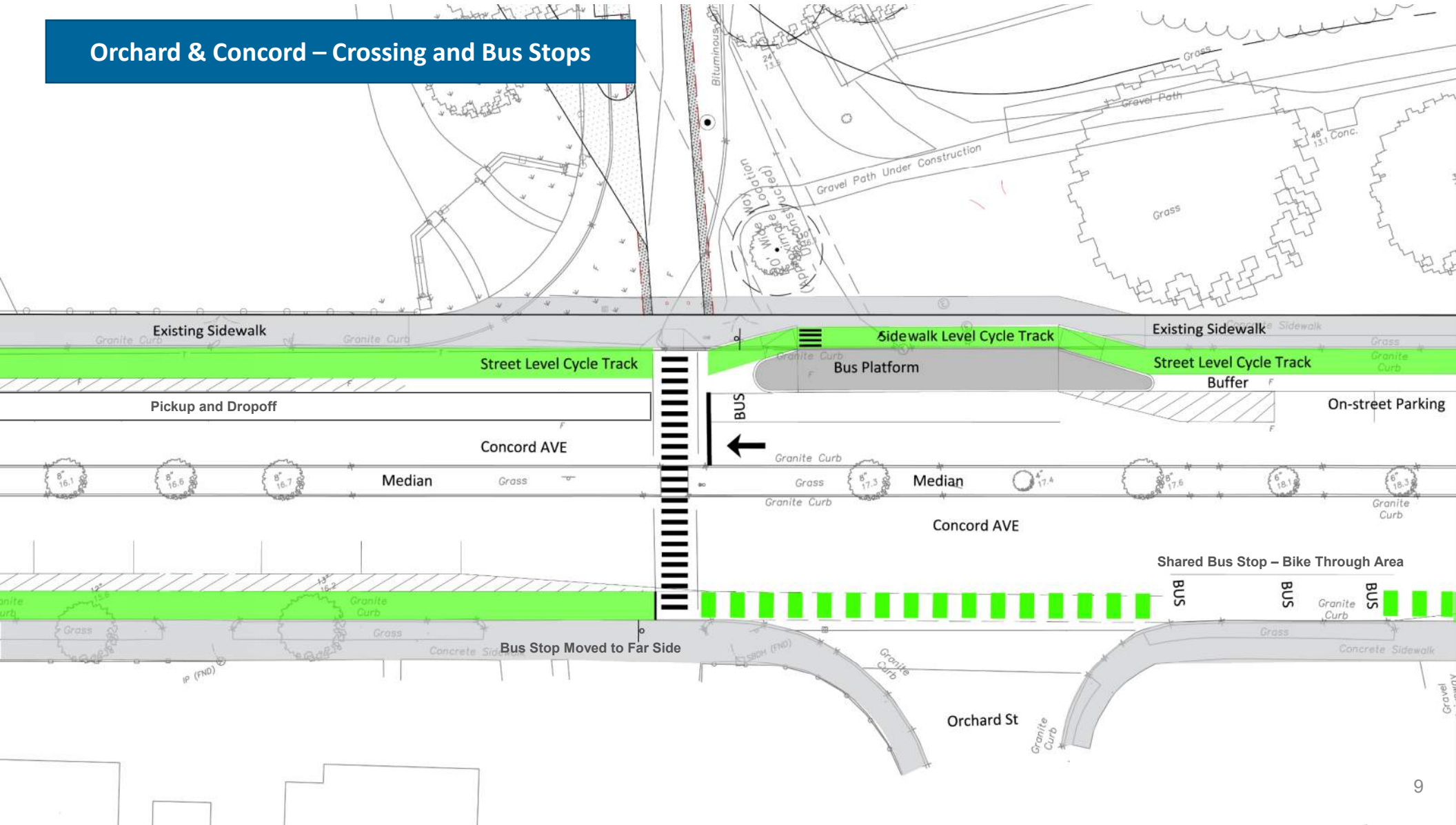
# GODEN & CONCORD

 Impacted median





# Orchard & Concord – Crossing and Bus Stops



# Concord, Cottage to Louise Overview

