

Belmont Middle & High School Project Update

November 2019

November 2019 Work Performed

- Installed Drilled Mini-Piles in Auditorium and Area C.
- Removed Fuel Storage Tank.
- Continued Excavation of Foundation Elements – Pile Caps & Grade Beams.
- Continued Cut and Prepared Piles for Reinforcement.
- Continued Locating, Reinforcing & Forming Foundation Elements – Pile Caps & Grade Beams.
- Continued Installing Anchor Bolts and Placing Concrete for Foundation Elements.



Photo 1 – Installation of Drilled Mini-Piles.



Photo 2 – Removal of Underground Fuel Storage Tank from Existing High School.



Photo 3 – Installation of Foam on Exterior Foundation Grade Beam in Preparation for Backfilling.



Photo 4 – Interior Pile Cap at Grade Beam with Anchor Bolts.



Photo 5 – Placing Concrete at Pile Cap/Grade Beam at Exterior Wall.



Photo 6 – Reinforcing Grade Beams.



Photo 7 – Reinforcing Grade Beams and Pile Caps.

December 2019 Look-Ahead

- Complete Area B Concrete Placements.
- Start Foundation Elements for Area C & A.
- Continue Insulating and Backfill of Foundation Elements – Pile Caps & Grade Beams.
- Continue Layout, Reinforcing & Forming Foundation Elements – Pile Caps & Grade Beams.
- Continue Installation of Anchor Bolts and Placement of Concrete for Foundation Elements.

TOTAL YARDAGE PLACED: 724 CY

AREA A TOTAL PILE CAPS: 66

TOTAL PILE CAP YARDAGE PLACED TO DATE: 450 CY

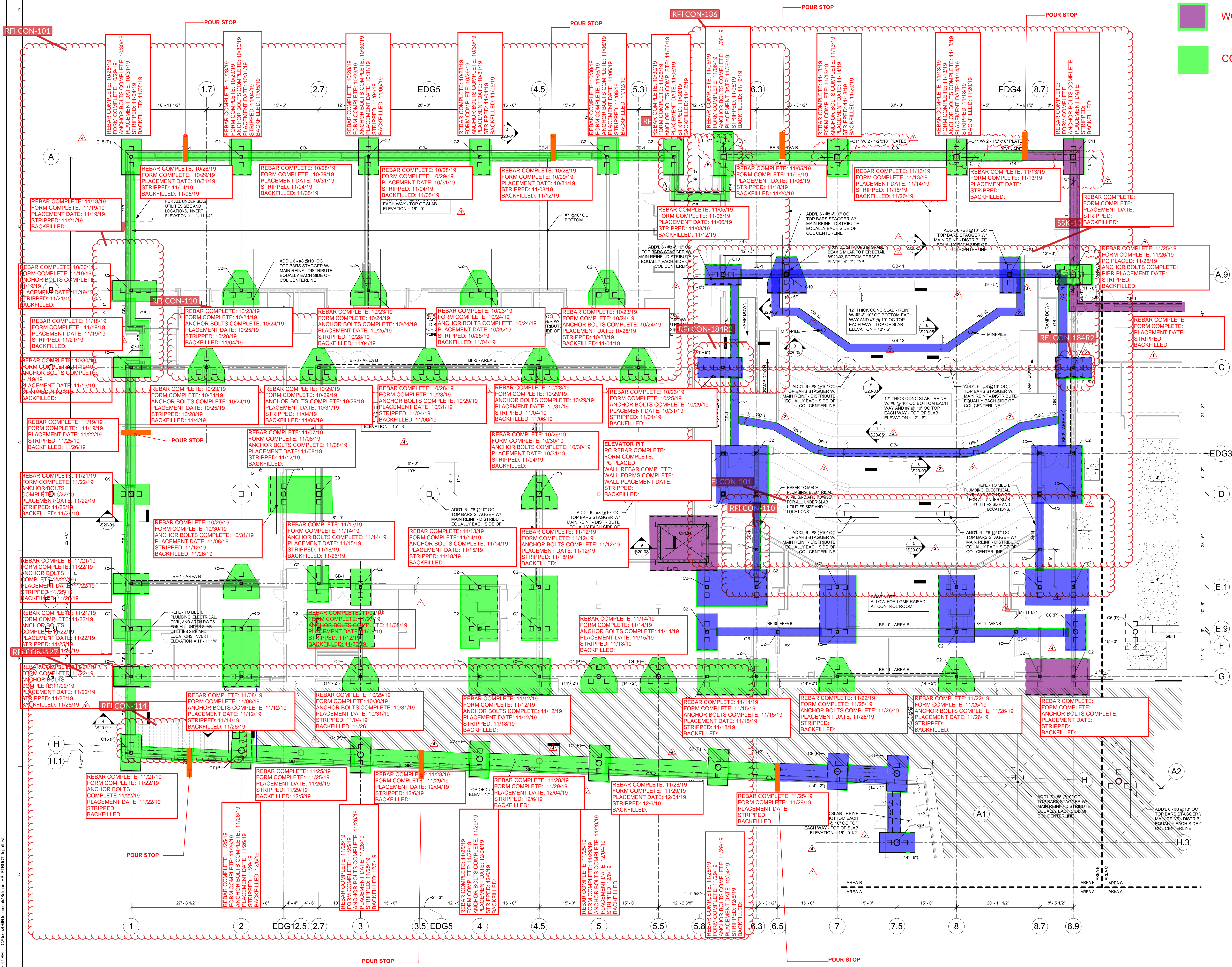
AREA A TOTAL PILE CAPS PLACED TO DATE: 47

TOTAL GRADE BEAM YARDAGE PLACED TO DATE: 274 CY

PERCENT COMPLETE: 71%

LEGEND

- BALANCE TO COMPLETE
- WORK IN PROGRESS
- CONCRETE COMPLETE

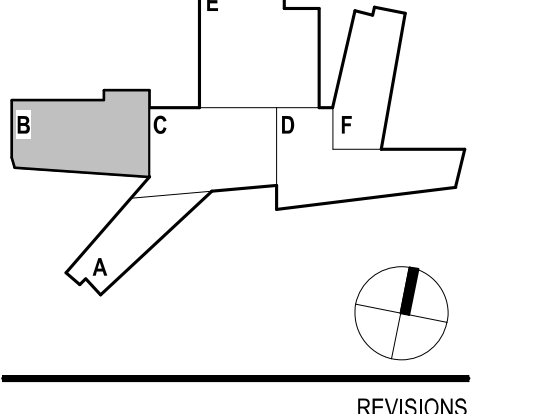


PROJECT
BELMONT MIDDLE AND HIGH SCHOOL
221 CONCORD AVE.
BELMONT, MA 02478

CLIENT LOGO IF AVAILABLE

TOWN OF BELMONT

KEYPLAN



REVISIONS

NO.	DATE	DESCRIPTION
7	02/27/19	ISSUE
6	02/27/19	ISSUE
5	02/27/19	ISSUE
4	02/27/19	ISSUE
3	02/27/19	ISSUE
2	02/27/19	ISSUE
1	02/27/19	ISSUE

EBP4 - BID PACKAGE #4
06.14.2019

JOB NUMBER: 153003.001
DRAWN: PWD
CHECKED: MWD

LEVEL 01 AND FOUNDATION PLAN - AREA A

S11-01B