



Rats in Belmont

Food Sources

- Food items in household garbage offer all of their favorite foods and can also satisfy their water needs
- Other sources around your home may include:
 - Animal food (from pets or livestock) and birdseed (often on the ground from birdfeeders)
 - Vegetable gardens, fruit and nut trees, or shrubs with fruit/berries low to the ground

Water Sources

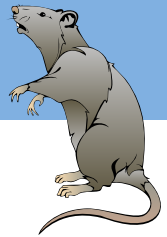
- Standing water: bird baths, buckets, discarded tires, pet water bowls, window pits around basements, clogged rain gutters
- Leaks from: roof, pipes/gutters, outdoor faucets, garden hoses

Shelter Sources

- Lumber/clutter on the ground
- Overgrown grass or greenery over 12 inches high, bushes, and tree limbs
- Rubbish including tires, engines, cans, drums, doors, etc.
- Broken sewer pipes, abandoned vehicles, and appliances
- dilapidated buildings, board fences, walls, and concrete slabs

Routinely inspect the exterior of your property to check if rodents are gaining access to or around the building. Some things to look out for include:

1. **Rat burrows:** Holes in the ground 2-4 inches in diameter where rats may be living. Check under fences, buildings, and cement slabs surrounding structures. You can test whether the burrow is active by filling the hole with dirt and checking to see if it is cleared the next day.
2. **Rat pathways:** Look for a narrow path in dense vegetation or a pathway that has been packed. The pathways will be between nesting and feeding areas.
3. **Droppings:** Rat droppings are about ¾ of an inch in length and have rounded ends.
4. **Smudge marks** (body oils) on walls.
5. **Sounds** of movement in walls and attics.
6. Family pets **staring intently** at a blank wall.



Click here for next steps if you see rats out and about:
[Rat Sightings Flowchart](#)

Disclaimer:

Spreading rat poison is harmful for wildlife like hawks, raccoons, foxes, etc. Please do not use this method of rodent deterrent independently of pest control professionals.



Belmont Health Department
617-993-2720

