

Winter Street/Concord Avenue/Mill Street— Conceptual Intersection Improvements



Presented by
 Tim McIntosh
 Laura Castelli
 Erin Thompson

December 14, 2017

Winter Street/Concord Avenue/Mill Street *Status*

- Traffic Advisory Committee meeting on October 12, 2017
 - Kicked off the discussion of potential intersection improvements
 - Residents had an opportunity to share their comments / concerns
 - Town and VHB listened

- Conceptual Design Development
 - Completed traffic data collection
 - Developed several conceptual design alternatives

- Traffic Advisory Committee meeting on December 14, 2017
 - Conceptual designs presented tonight

General Summary of Resident Concerns

- High Speed on Concord Avenue WB approaching Mill Street
- Severe intersection angle at Concord Avenue and Mill Street
- Sight line at Concord Avenue and Mill Street

- High Speed on Concord Avenue WB approaching Winter Street
- Difficult to make a left turn from Winter Street to Concord Avenue EB
- Cut-through traffic a concern at Partridge Lane

- Traffic queuing in general
- High speeds in general
- Lack of sidewalks

- Safety



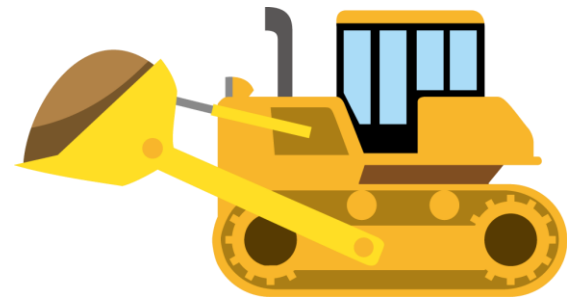
Goals for Conceptual Design

- Address Safety Issues
- Reduce High Vehicle Speeds
- Alleviate Traffic Back-ups



Challenges

- Available Right-of-Way
- Adjacent Conservation Land
- Achieving consensus on proposed solution
- Construction funding



Conceptual Design Alternatives

- T-Intersection concept
- Roundabout concept
- Combination of T-Intersection and Roundabout concept



Conceptual Design Alternative—T Intersection



Winter Street

Pros

- Speed issue is addressed for Concord Avenue EB to Winter Street
- Traffic queuing improved on Winter Street SB to Concord Avenue

Cons

- Lengthy traffic queue on Concord Avenue EB in AM
- Speed issue not addressed from Concord Avenue WB to Winter Street
- Potential driveway impact to #981 Concord Avenue

Conceptual Design Alternative—T Intersection



Mill Street

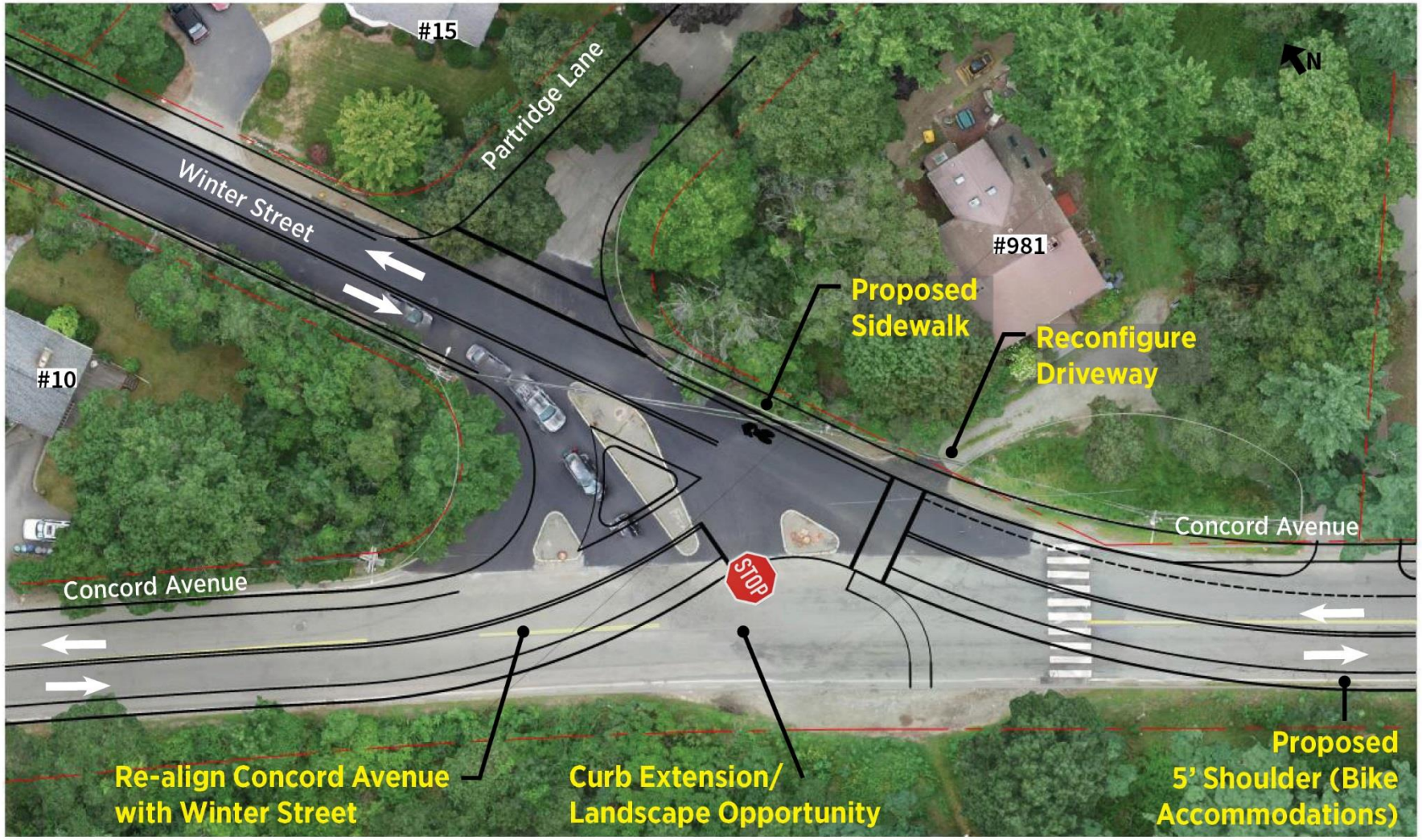
Pros

- Clear sense of who has the right-of-way
- Eliminates lengthy traffic queue on Mill Street
- No impacts to Gas Station access
- Addresses speed concern for Concord Avenue WB approach to Mill Street

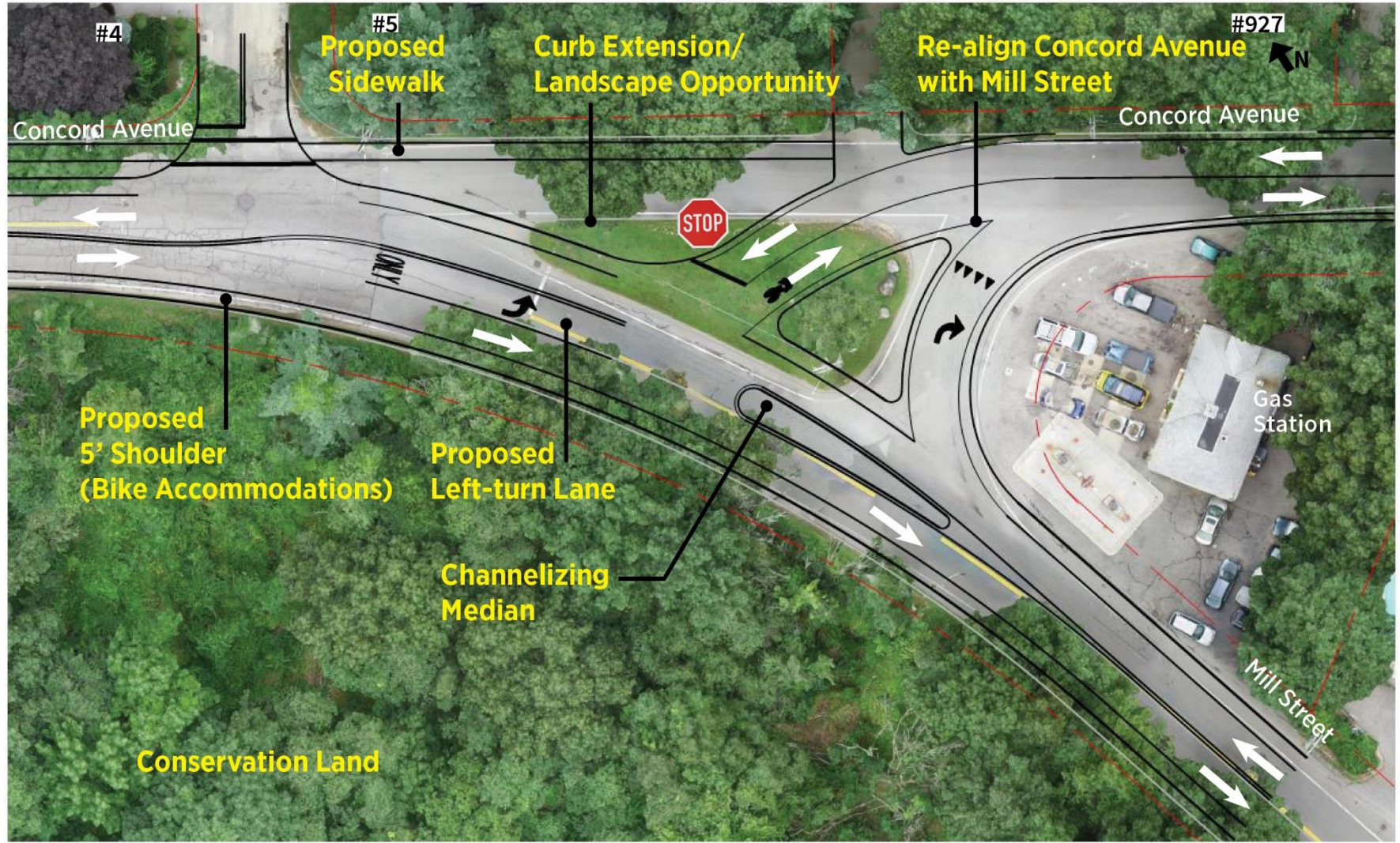
Cons

- Reconfiguration of existing grass island area needed
- Potential for increased speed on Mill Street

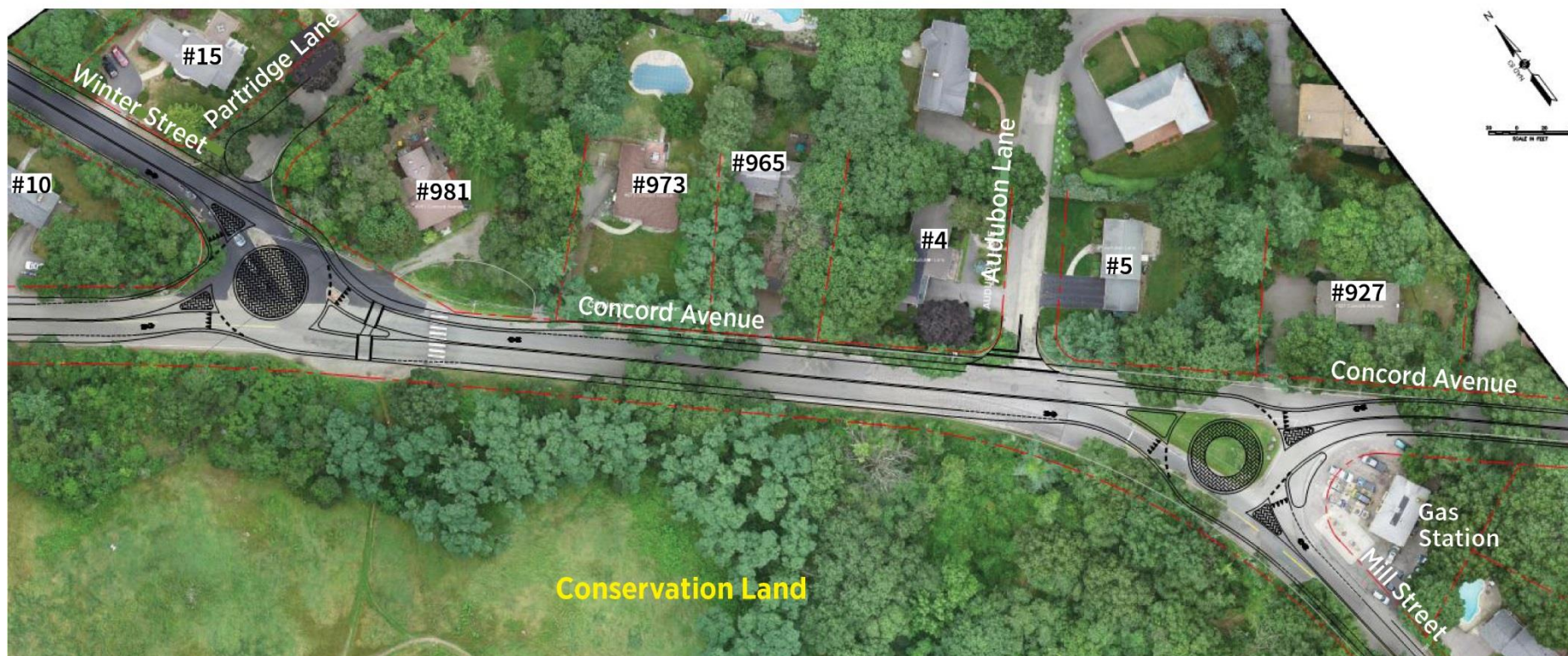
Conceptual Design Alternative—T Intersection



Conceptual Design Alternative—T Intersection



Conceptual Design Alternative—Roundabout



Winter Street

Pros

- Addresses speed issue on all approaches
- Operates well in AM & PM

Cons

- Potential for minor right-of-way impacts to #10 Winter Street and #981 Concord Avenue

Conceptual Design Alternative—Roundabout



Mill Street

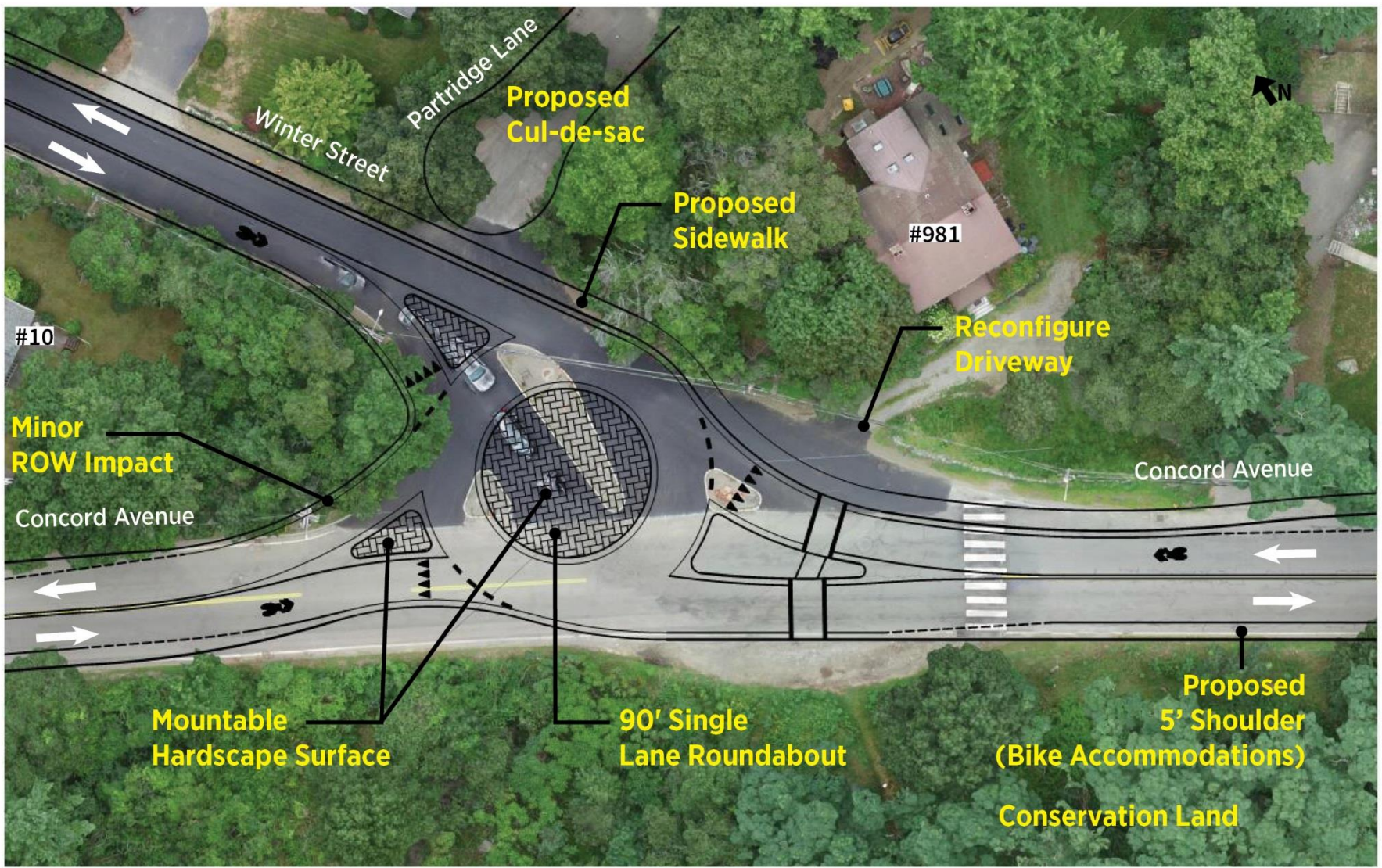
Pros

- Addresses speed issue on all approaches
- Operates well in PM
- Clear sense of who has the right-of-way

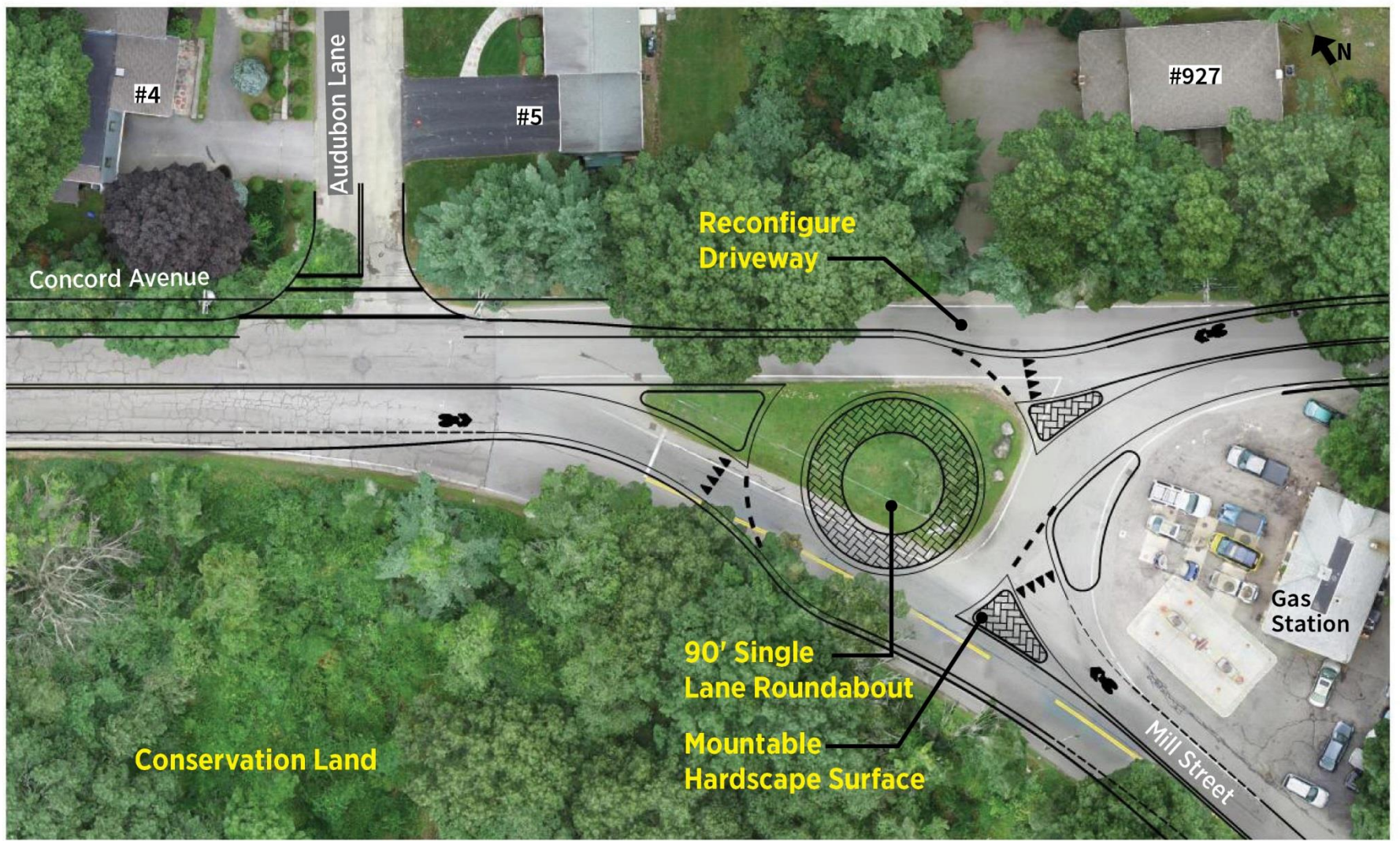
Cons

- Impacts driveway access to #927 Concord Avenue
- Lengthy traffic queue on Concord Avenue EB approach to Mill Street in AM

Conceptual Design Alternative—Roundabout



Conceptual Design Alternative—Roundabout



Conceptual Design Alternative—Preferred



Winter Street

Pros

- Addresses speed issue on all approaches
- Operates well in AM & PM

Cons

- Potential for minor right-of-way impacts to #10 Winter Street and #981 Concord Avenue
- Potential for increased speed on Mill Street

Conceptual Design Alternative—Preferred



Mill Street

Pros

- Clear sense of who has the right-of-way
- Eliminates lengthy traffic queue on Mill Street
- No impacts to Gas Station access
- Addresses speed concern for Concord Avenue WB approach to Mill Street

Cons

- Reconfiguration of existing grass island area needed

Questions

