

Perkins&Will

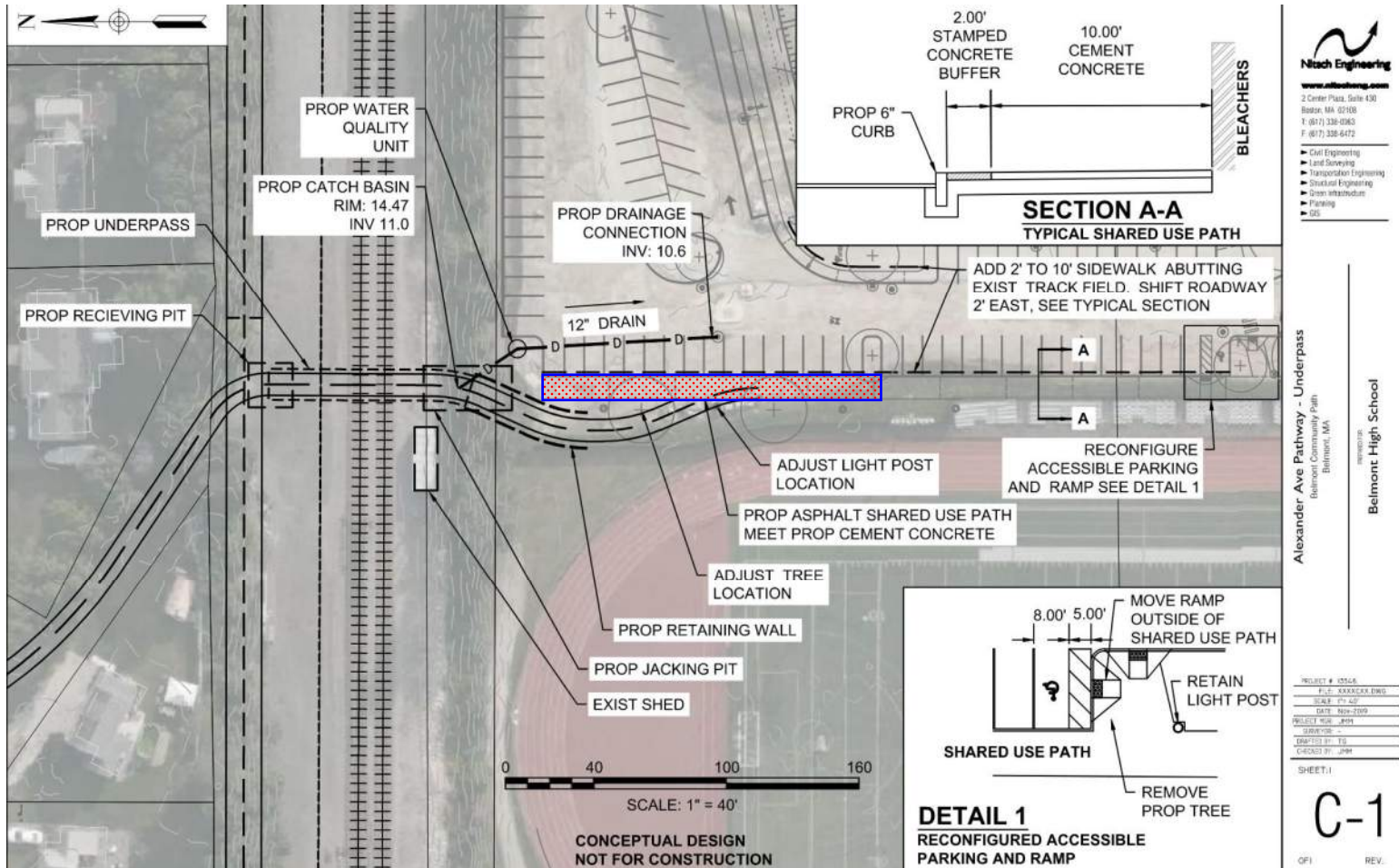
**BELMONT HIGH SCHOOL
Bike Path Connection Updates**

5.26.2021

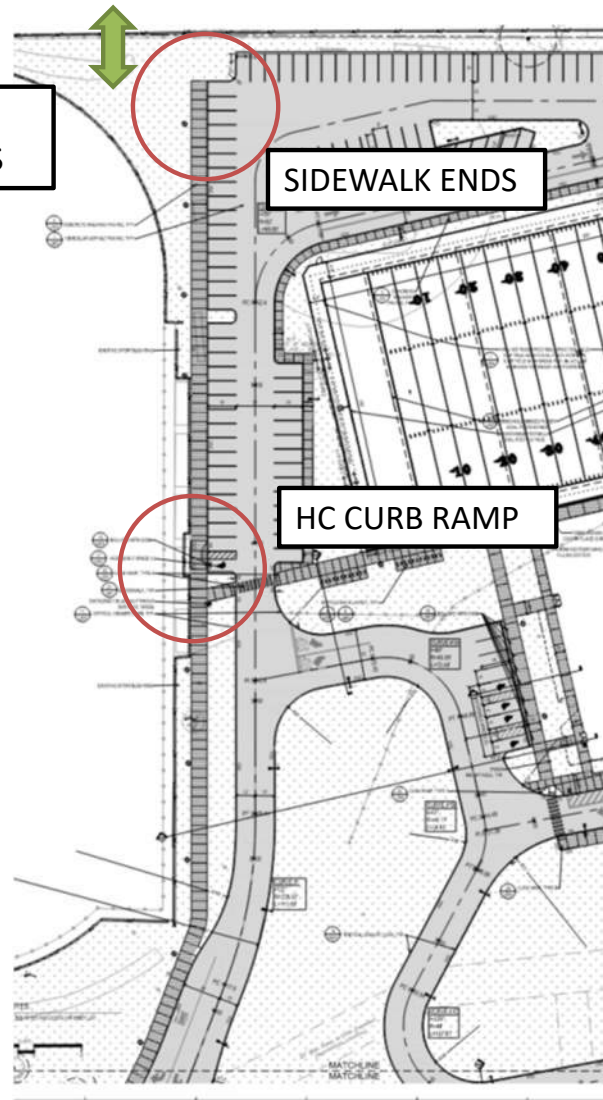
BIKE PATH OVERALL



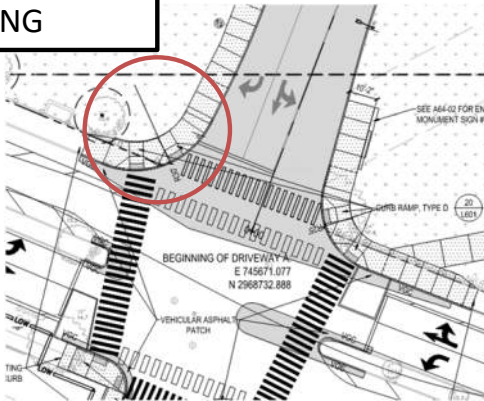
BIKE PATH OVERALL



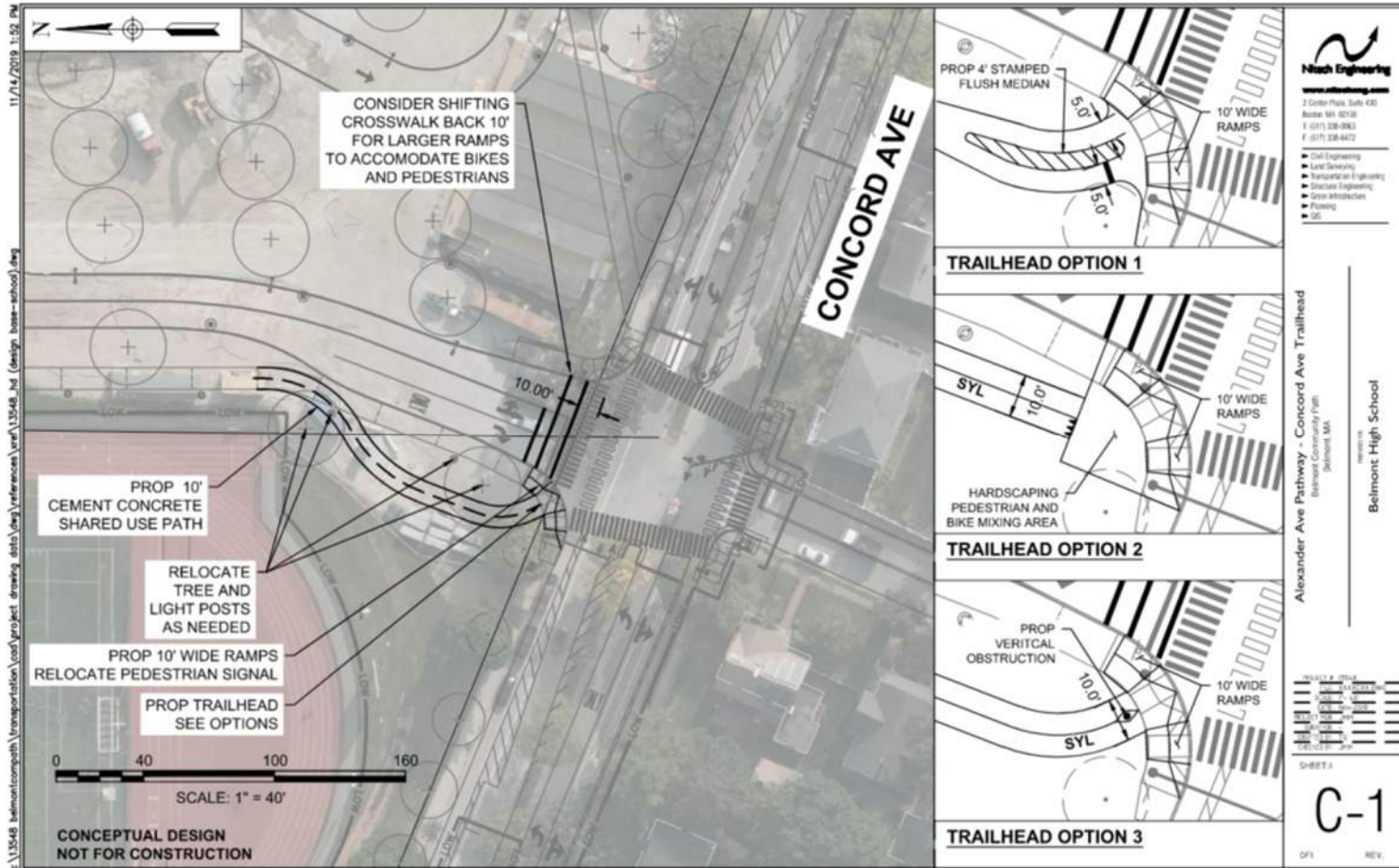
CONSTRUCTION DOCUMENTS



PEDESTRIAN CROSSING

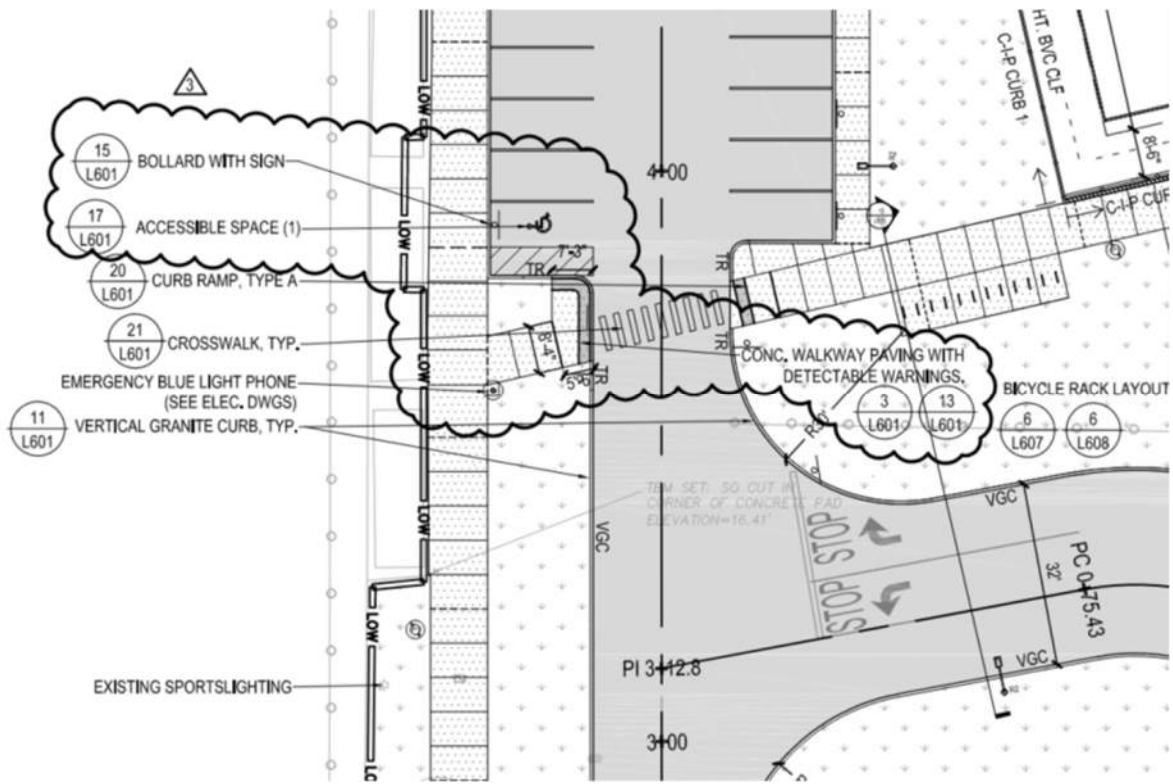


TRAILHEAD RECOMMENDATIONS



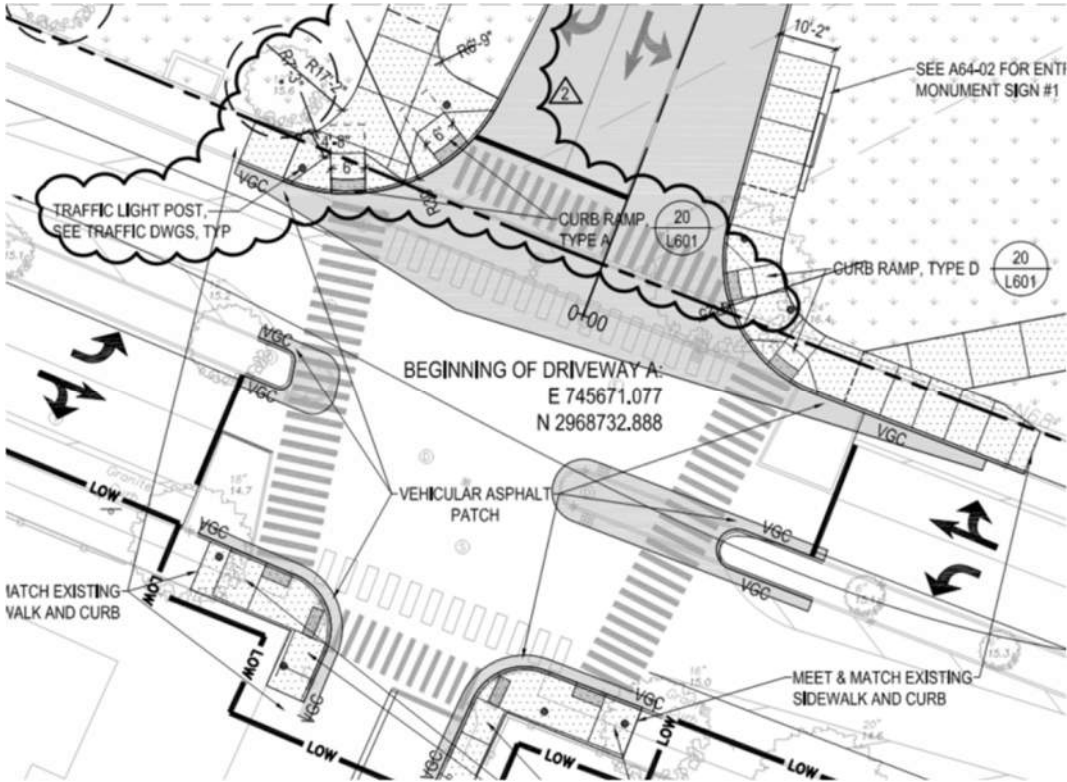
SKETCH CHANGE

RELOCATE CURB RAMP



SKETCH CHANGE

EXPAND
CROSSING/STOPPING AREA



SKETCH CHANGE PROCESS

11/9/20 DESIGN TEAM MEETING TO REVIEW OPTIONS AND CONSTRAINTS (UTILITIES, AS-BUILTS, EXISTING CONDITIONS ETC).

- LANDSCAPE UPDATED INTERSECTION AND RELOCATED CURB RAMP OUT OF BIKE PATH AT PARKING LOT
- UPDATED SKETCHES SENT TO TRAFFIC ENGINEER.

12/10/20 MEETING WITH TRAFFIC AND LANDSCAPE

- SIGNAL POST MOVED,UPDATED MAST ARMS, CROSSWALKS UPDATED, PUSH BUTTONS RELOCATED.
- FINALIZE GRADING, SIDEWALK AND CURB RAMP LAYOUT, UPDATED SITE LIGHTING (2 POLES IMPACTED)
- COORDINATE BACKGROUNDS WITH CIVIL, TRAFFIC, ELECTRICAL AND LANDSCAPE SITE PLANS.

1/7/2021 FINALIZE AND SEND 6 LANDSCAPE DRAWINGS