

Belmont Middle & High School Project Update

February 2021



Work Performed - February 2021

General

- Continued Incorporating COVID-19 Provisions on Site for Safe Work Practices
- Continued second shift on project. Primarily intumescent paint for safety and schedule compression

Building A

- Completed exterior glazing at window trim
- Completed exterior ground level masonry under winter conditions
- Completed installation of HVAC vents and chilled beams into ceiling grid
- Completed installation of corridor lighting
- Completed installation of metal panels at façade
- Completed installation of corridor wall tile
- Completed installation of millwork P-LAM window sills
- Continued acoustical ceiling installation
- Continued installation of classroom flooring
- Started installation of classroom lighting
- Start installation of multi-story curtain wall at HS Main Entrance Canopy

Building B

- Completed installation of catwalk and MEPFP's in auditorium
- Completed glass and metal panel installation
- Continued installation of masonry at façade
- Continued installation of High School elevator
- Continued drywall installation and interior wall finishes
- Continued painting interior walls
- Continued installation of corridor lighting
- Continued installation of corridor wall tile
- Continued above ceiling punch list
- Started installation of corridor lighting
- Started installation of millwork P-LAM window sills

Building C

- Completed rough-in of MEPFP's in West mechanical shaft
- Completed installation of interior framing
- Continued installation of MEP/FP rough-in
- Continued main switchgear installation
- Continued main Mechanical Room MEPFP's
- Continued installation of Stair #3
- Started installation of overhead MEPFP's at Pool
- Started installation of drywall

Look Ahead - March 2021

General

- Continue Incorporating COVID-19 Provisions on Site for Safe Work Practices
- Continue second shift on project. Primarily intumescent paint for safety and schedule compression

Building A

- Continue installation of light fixtures
- Complete installation of tile in bathrooms
- Continue installation of classroom flooring
- Continue installation of multi-story curtain wall at HS Main Entrance Canopy
- Start painting and installation of interior doors

Building B

- Complete interior wall finishes
- Complete installation of masonry at façade
- Complete painting walls
- Complete installation of glass and metal panels
- Continue installation of ceilings
- Continue installation of wall tile
- Continue installation of light fixtures
- Start installation of glazing and trim at multi-story curtain wall
- Start installation of millwork P-LAM window sills

Building C

- Complete installation of Stair #3
- Complete installation of East mechanical well ductwork and piping
- Continue Main Mechanical Room MEPFP's
- Continue MEP rough-in
- Continue installation of drywall and interior wall finishes
- Continue installation of MEPFP's at Pool
- Start installation of kitchen equipment
- Start installation of glass and metal panels at windows

Progress Photos

- Area B, South façade – multi-story curtain wall

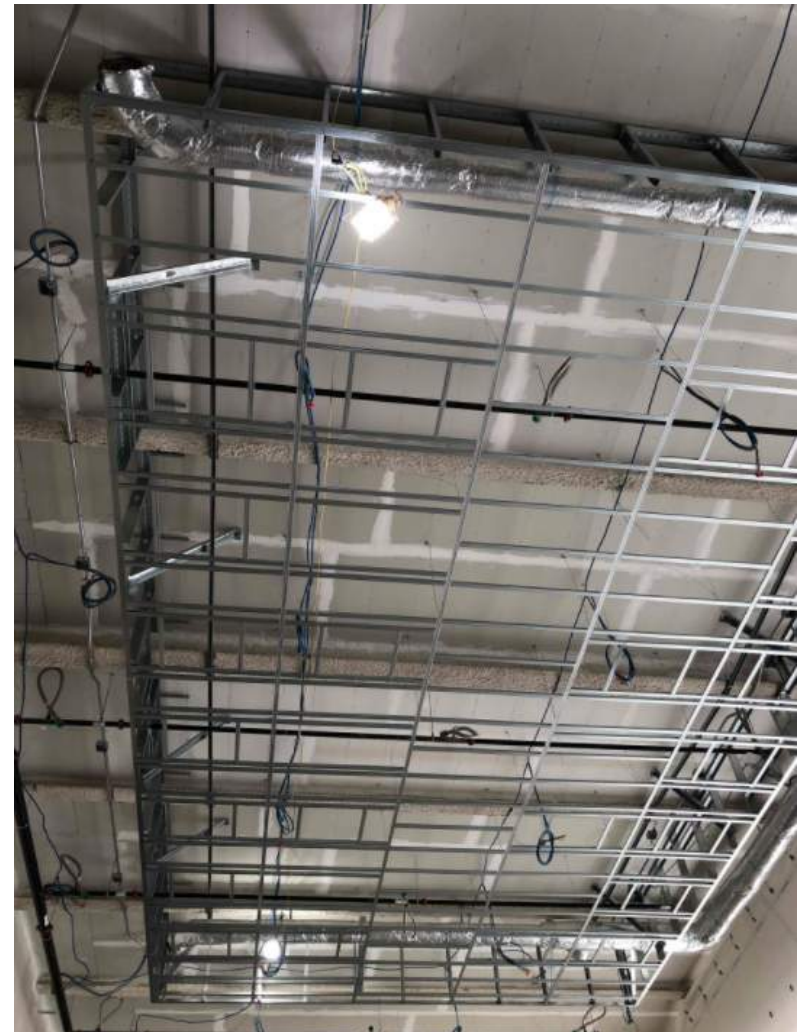


Progress Photos

- Area C, level 1 – main mechanical room equipment



- Area B, level 2 – sound isolating GWB ceiling soffit



Progress Photos

- Area B, North façade – clearstory windows and masonry under weather protection



Area C, level 2 – scaffold staging for pool ceiling



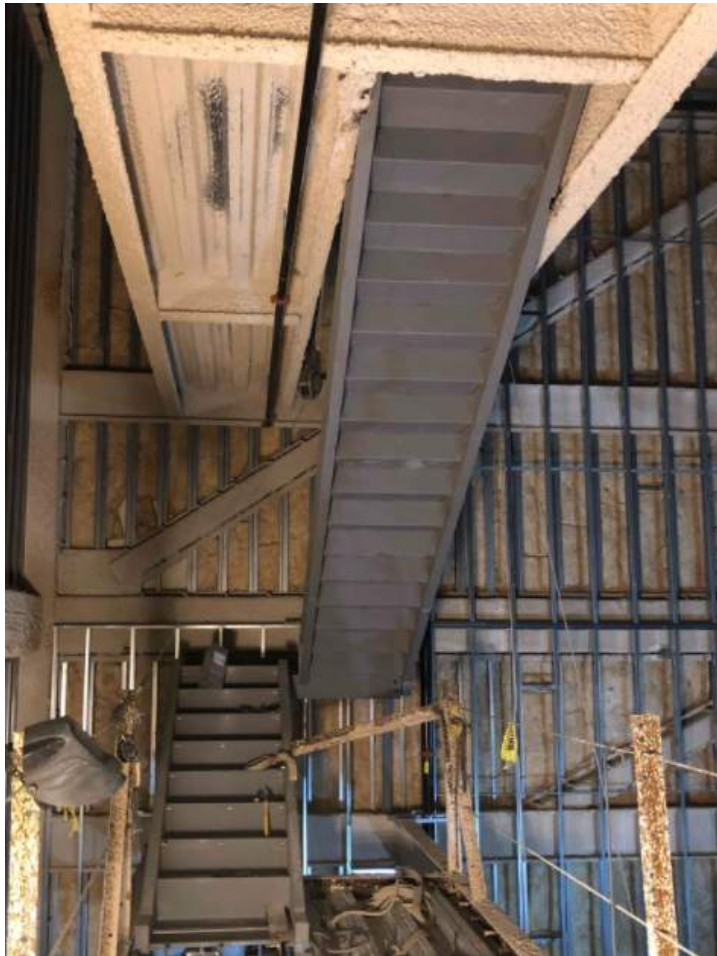
Progress Photos

- Area B, North façade – glazing, metal panels and masonry



Progress Photos

- Area B, level 3 – Stair #13 steel at auditorium stage



- Area C, level 3 – Stair #3 steel and concrete



Progress Photos

- Area A, West façade – glass, metal panels and sunshades



- Area B, level 2 – intumescent paint for structural columns, drywall, and multi-story curtain wall

