

# Belmont Middle & High School Project Update

December 2020



# Work Performed - December 2020

## **General**

- Continued Incorporating COVID-19 Provisions on Site for Safe Work Practices
- Continued installation of temporary heating components
- Installed temporary bathroom trailer with heat
- Installed pavement at loading docks for winter conditions

## **Building A**

- Completed drywall installation and interior wall finishes
- Completed first two coats of interior wall paint
- Continued glass installation after masonry
- Continued installation of metal panels at façade
- Continued acoustical ceiling installation
- Started installation of HVAC vents and chilled beams into ceiling grid

## **Building B**

- Continued installation of masonry at façade
- Continued installation of MEP/FP rough-in
- Continued installation of catwalk in black box theater
- Continued installation of High School elevator
- Continued drywall installation and interior wall finishes
- Started painting interior walls
- Started installation of catwalk in auditorium
- Started glass and metal panel installation

## **Building C**

- Completed concrete slab on grade placements
- Continued installation of AVB
- Continued installation of interior framing / early drywall
- Continued installation of MEP/FP components
- Continued renovation of pool area
- continued main switchgear installation
- Continued installation of masonry at façade

# Look Ahead - January 2021

## **General**

- Complete temporary heat system
- Continue Incorporating COVID-19 Provisions on Site for Safe Work Practices

## **Building A**

- Continue interior wall finishes
- Complete installation of ceilings
- Start installation of light fixtures
- Start installation of tile
- Start installation of rubber flooring

## **Building B**

- Complete installation of drywall
- Complete interior wall finishes
- Complete installing catwalk in auditorium and black box theater
- Complete installing High School elevator
- Complete installation of masonry at façade
- Continue drywall installation and interior wall finishes
- Continue painting walls
- Continue installation of glass and metal panels
- Start installation of ceilings

## **Building C**

- Continue renovation of pool
- Continue installation of curtain wall glass
- Continue framing interior walls
- Start installation of drywall and interior wall finishes
- Start installation of glass and metal panels at windows

# Progress Photos

- Black Box: installation of overhead MEPs following completion of catwalk



- Area B: drywall installation of wall finishes



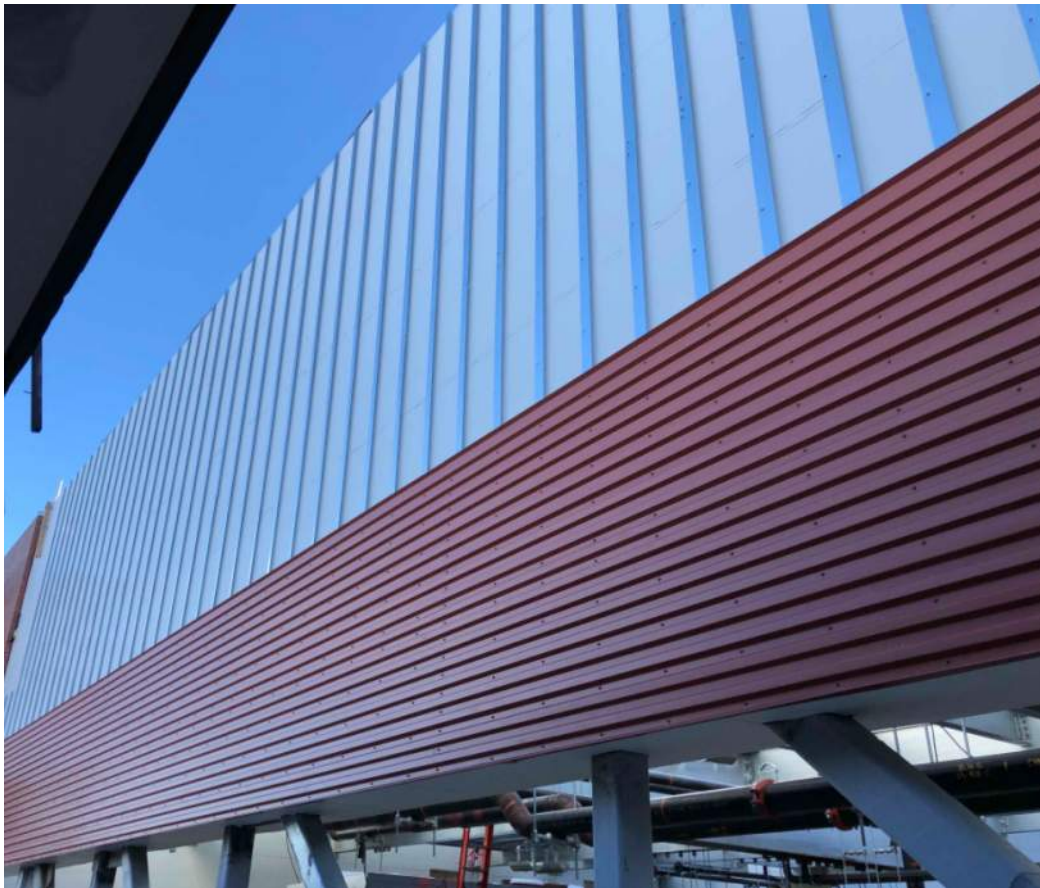
# Progress Photos

- Area C: curtain wall glass and metal panel installation

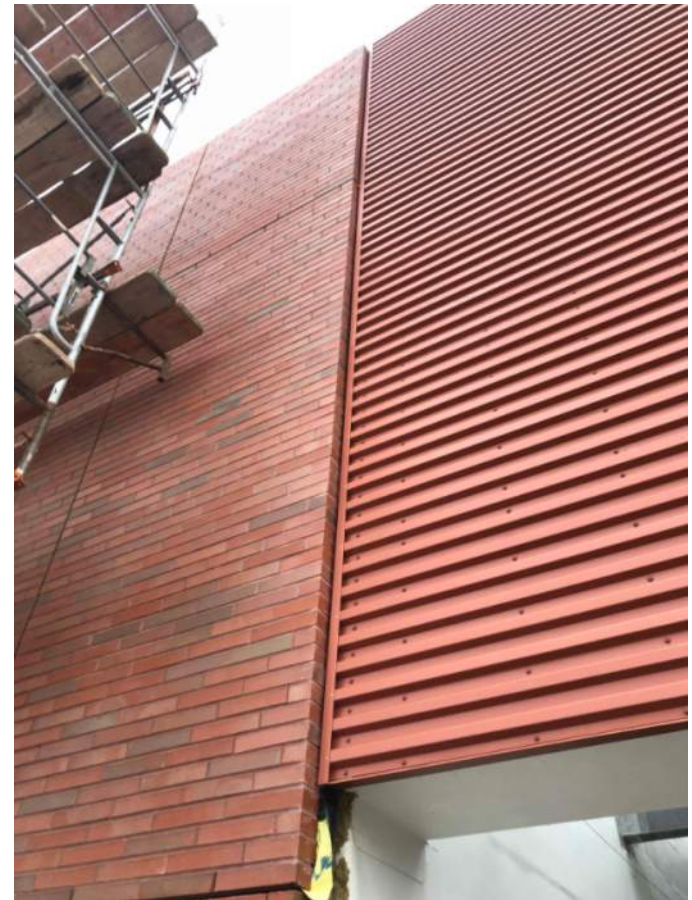


# Progress Photos

- Installation of corrugated panel at Area C Mech. Well



- Area C: masonry / corrugated panel interface



# Progress Photos

- Area A: installation of metal panels at southwest elevation
- Area B: installation of metal panels on east elevation

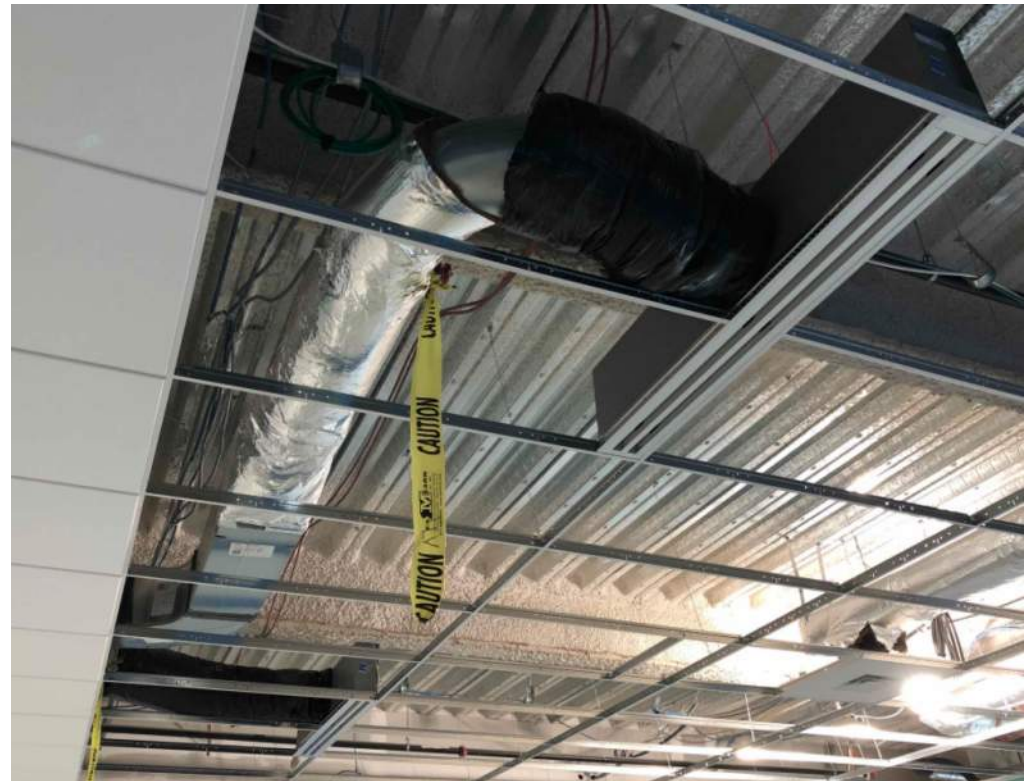


# Progress Photos

- Area B: frame installation for level 3 interior glazing



- Area A: installation of acoustical ceiling and duct vents





# Progress Photos

- Area B: Auditorium control room framing and early drywall



- Area A: west elevation, decorative CMU

