

Belmont Middle & High School Project Update

July 2020

July 2020 Work Performed

Building A

- Completed Placement of Slab on Grade.
- Continued Exterior Framing, and Sheathing.
- Continued Installation of MEP/FP System Rough.
- Continued Spray Fireproofing.
- Started Roofing Installation of Air-Vapor Barrier (AVB) and Roof Curbs.
- Started Installation of classroom window frames.
- Started Installation of Waterproofing AVB.

Building B

- Continued Under-slab Utility Installation.
- Continued Interior/Exterior Wall Layout and Top Track Installation Prior to Spray Fireproofing.
- Continued Exterior Framing.
- Continued Sheathing.
- Continued Interior/Exterior Wall Layout and Top Track Installation Prior to Spray Fireproofing.
- Continued Spray Fireproofing.
- Started Roofing Installation of Air-Vapor Barrier (AVB) and Roof Curbs.

Building C

- Continued Under-slab Utility Installation.
- Completed Placement of Concrete Slab on Deck.
- Continued Interior/Exterior Wall Layout and Top Track Installation Prior to Spray Fireproofing.
- Continued Spray Fireproofing.

Field House

- Continued Renovation Work, Including Floor Protection, Abatement, and Installation of Overhead MEPS.
- Started Painting – Application of Block Filler

Field Work

- Completed Lateral Piping in Well Field #2.
- Continued Lateral Piping in Well Field #3 and Drilling in Geothermal Well-Field #3.

General

- Continued Incorporating COVID-19 Provisions on Site for Safe Work Practices.
- Continued MEP/Fire Protection Piping, Conduit, and Ductwork Coordination and Installation.



Photo 1 – Geothermal Well Drilling in Field #3.



Photo 2 – Installation of Lateral Piping in Field #2.

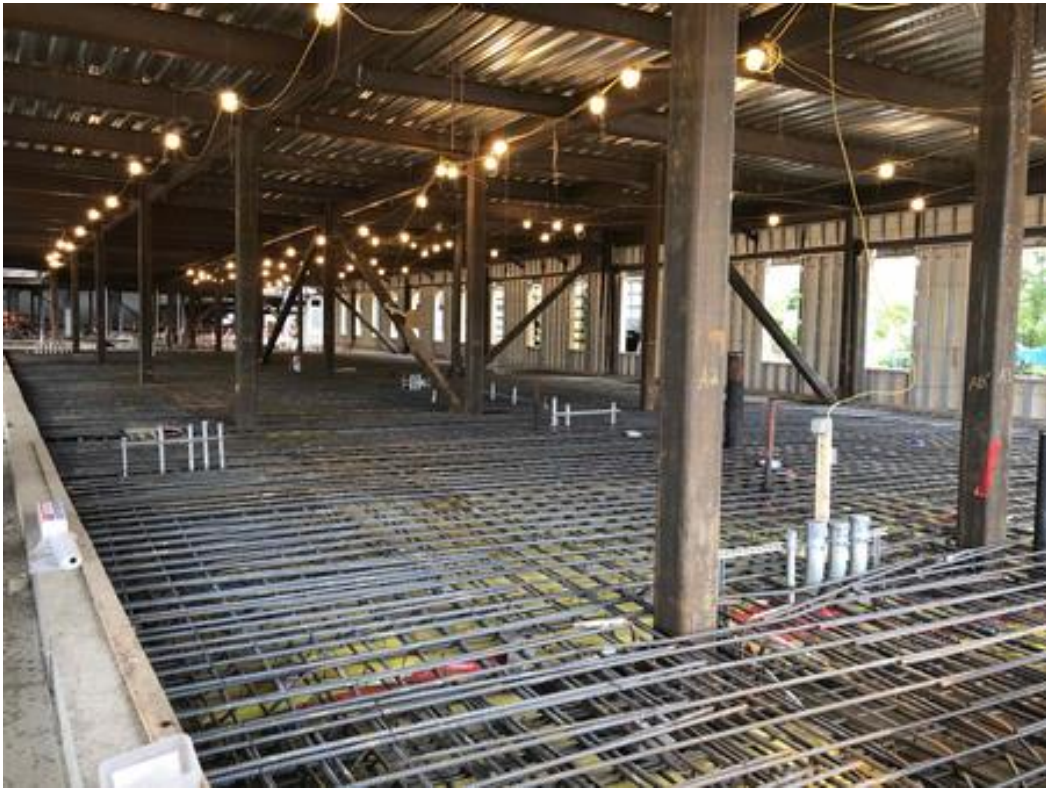


Photo 3 – Area A Slab on Grade Rebar Installed to Receive Pour.



Photo 4 – Slab on Grade Placement for Building A Level 1.



Photo 5 – Building A Corridor with MEP components, wall framing, and some sheathing installed.



Photo 6 – Select Spray Applying Spray Fireproofing to Auditorium Area in Building B.



Photo 7 – Building A West Elevation Being Sheathed.



Photo 8.1 & 8.2 – Detailed and Sprayed AVB in Building A.



Photo 9 – Plumbers Install Roof Drains; Pipe-Fitters Install Fire Protection Piping.

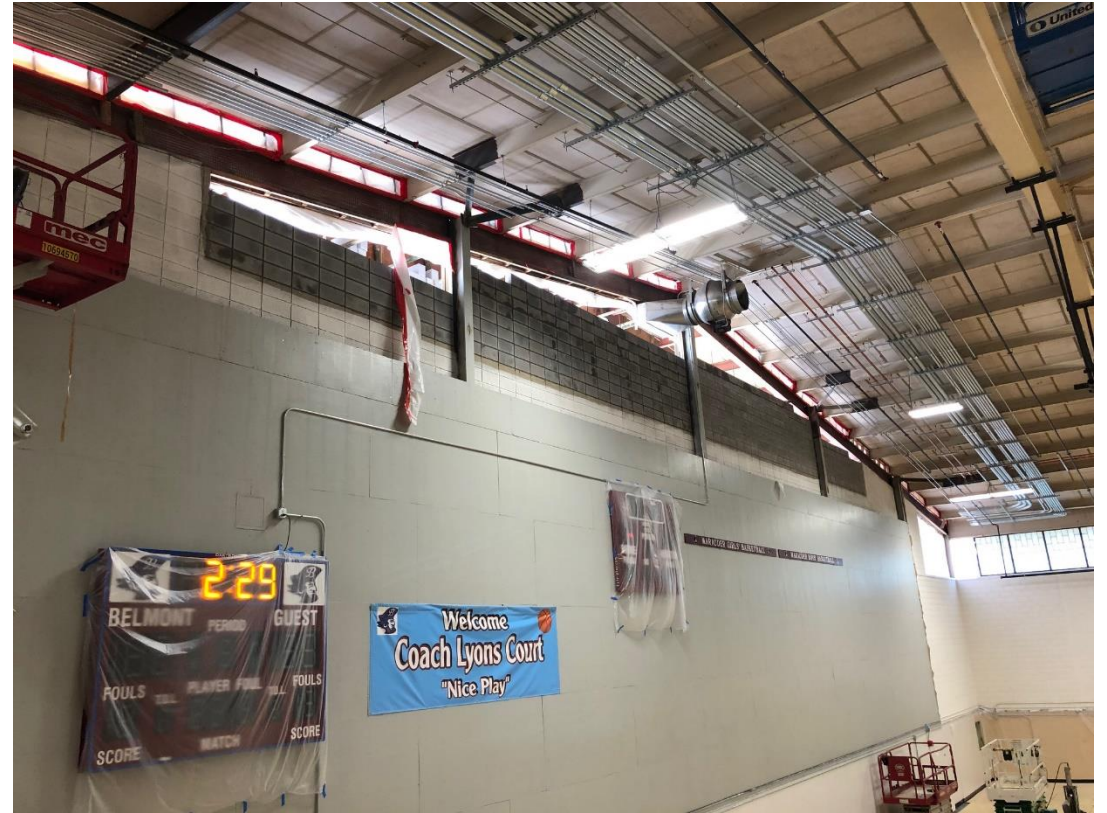


Photo 10 – South Side of Gym Showing Blocks installed by Commercial Masonry and Overhead MEPs .

August 2020 Look-Ahead

Building A

- Continue Sheathing, and Installation of AVB.
- Continue Installation of Window Frames and Temporary Plywood.
- Continue Installation of MEP/FP Components.
- Complete Spray Fireproofing.

Building B

- Complete Spray Fireproofing.
- Continue Concrete Slab on Grade Placements.
- Continue Exterior Wall Framing.
- Continue Sheathing.
- Continue Interior Wall Layout and Top Track Installation.
- Start Installation of Early Walls.
- Complete Under-slab Utility Installation.
- Continue Installation of MEP/FP Components.
- Continue Installation of Roofing Materials.
- Continue Installation of AVB.
- Start Installation of Window Frames and Temporary Plywood.

Building C

- Start Concrete Slab on Grade Placements.
- Start Installation of Roofing Materials.
- Start Installation of AVB.
- Start Installation of Exterior Framing and Sheathing.
- Start Installation of Early Walls.
- Complete Spray Fireproofing.
- Complete Under-slab Utility Installation.
- Continue Installation of MEP/FP Components.

Field House

- Complete Summer 2020 Renovation Activities (Painting and MEPs).

Field Work

- Complete Drilling Geothermal Wells and Lateral Piping in Field #3.

General

- Complete MEP/FP Coordination.
- Continue Incorporating COVID-19 Provisions on Site for Safe Work Practices.