

# Belmont Middle & High School Project Update

March 2021



# Work Performed – March 2021

## **General**

- Continued Incorporating COVID-19 Provisions on Site for Safe Work Practices
- Continued second shift on project. Primarily intumescent paint for safety and schedule compression
- Completed installation of in-wall brackets for countertops and shelving

## **Building A**

- Completed installation of ceiling devices (lights, sprinklers, diffusers)
- Completed installation of glass and metal panels at windows
- Continued installation of classroom flooring
- Continued installation of classroom lighting
- Continued installation of multi-story curtain wall at HS Main Entrance Canopy
- Started installation of bathroom tile

## **Building B**

- Completed drywall installation and interior wall finishes
- Completed painting primer and first finish coat on interior walls
- Continued installation of corridor wall tile
- Continued installation of masonry at façade

## **Building B continued**

- Continued installation of High School elevator
- Continued above ceiling punch list
- Continued installation of corridor lighting
- Continued installation of glass and metal panels at windows
- Continued installation of millwork P-LAM window sills
- Started installation of bathroom tile
- Started installation of classroom lighting

## **Building C**

- Completed main switchgear installation
- Completed installation of Stair #3
- Continued main Mechanical Room MEPFP's
- Continued installation of MEP/FP rough-in
- Continued installation of overhead MEPFP's at Pool
- Continued installation of drywall
- Started painting primer and first finish coat on interior walls
- Started installation of radiant floor system
- Started installation of ACT ceiling grid
- Started installation of kitchen equipment
- Started installation of glass and metal panels at windows

# Look Ahead – April 2021

**General**

- Continue Incorporating COVID-19 Provisions on Site for Safe Work Practices
- Continue second shift on project. Primarily intumescent paint for safety and schedule compression
- Turn on permanent electrical power
- Start installation of ACT-14 ceiling

**Building A**

- Complete installation of tile in bathrooms
- Continue installation of classroom flooring
- Continue installation of multi-story curtain wall at HS Main Entrance Canopy
- Start painting and installation of interior doors
- Start installation of bathroom finishes
- Start installation of epoxy bathroom floors

**Building B**

- Complete installation of masonry at façade
- Complete painting walls
- Complete above ceiling punch list
- Complete installation of glazing and trim at multi-story curtain wall

**Building B continued**

- Complete installation of P-LAM window sills
- Continue installation of ceilings
- Complete installation of glass and metal panels
- Continue installation of wall tile
- Continue installation of light fixtures
- Start installation of tiered seating structure

**Building C**

- Complete installation of East mechanical well ductwork and piping
- Continue Main Mechanical Room MEPFP's
- Continue MEP rough-in
- Continue installation of drywall and interior wall finishes
- Continue installation of MEPFP's at Pool
- Continue installation of kitchen equipment
- Continue installation of glass and metal panels at windows
- Start above ceiling punch list
- Start installation of baffle ceiling at pool

# Progress Photos

- Area A, Operable partition classroom divider



- Area C, Level 3 Mechanical Well – HVAC Piping and Ductwork

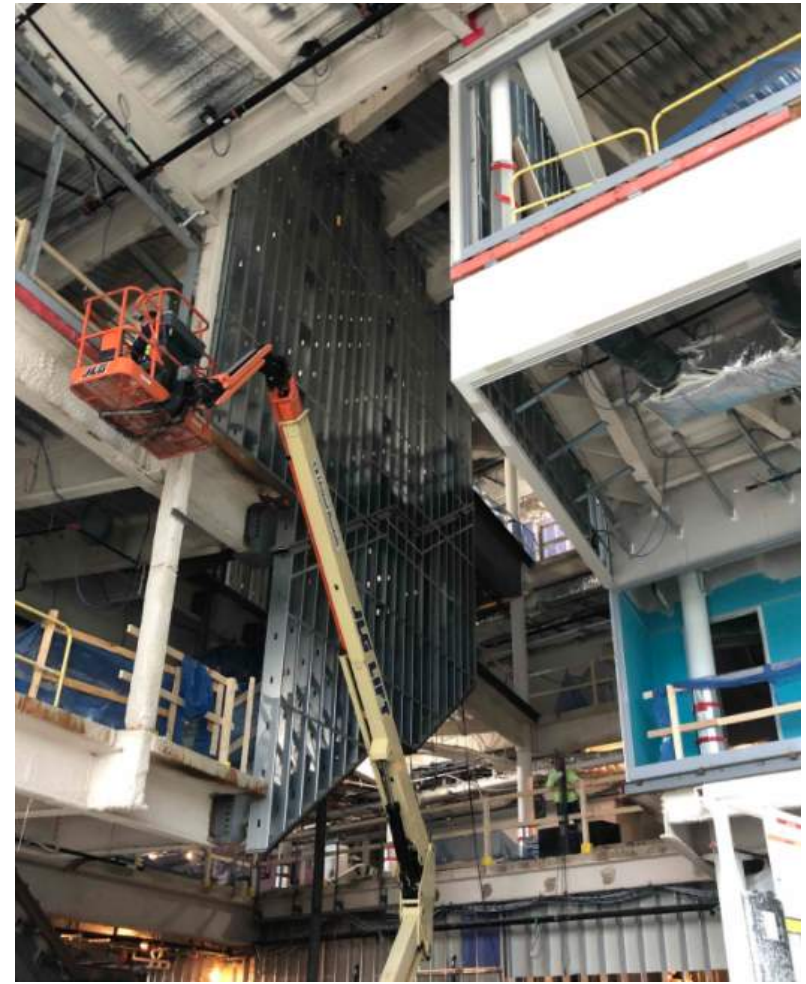


# Progress Photos

- Area C, South Elevation – installation of vertical sunshades at multi-story curtain wall



- Area C – Stair 3 and cantilevered slab edge, viewed from Café Commons

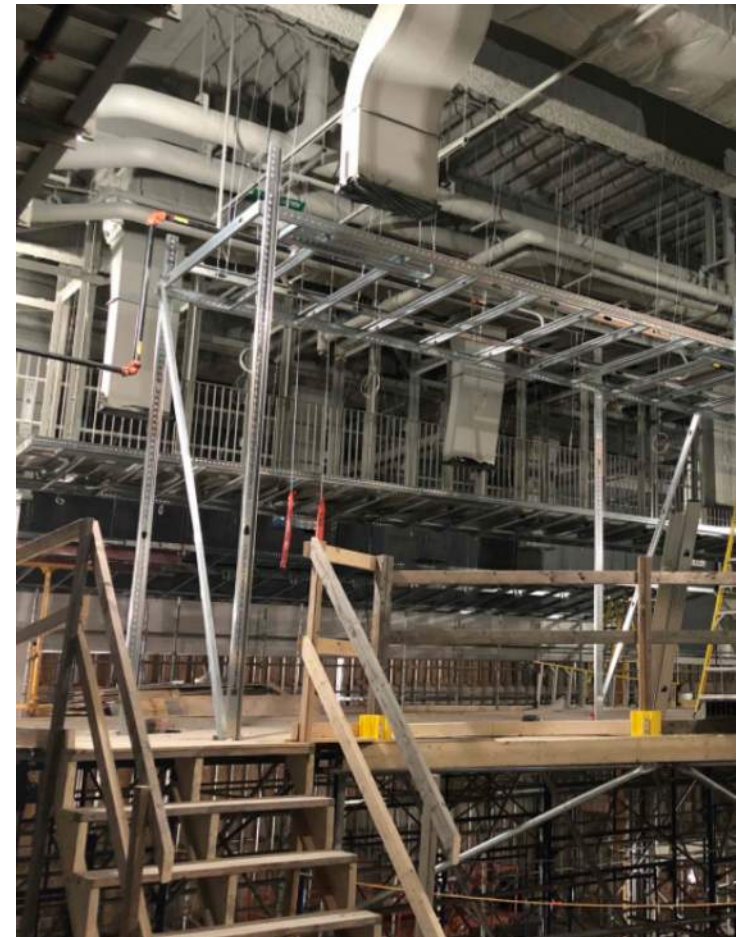


# Progress Photos

- Area C, Level 2 – Media Center



- Area B, Level 2 – Auditorium scaffolding for installation of acoustic reflector panels



# Progress Photos

- Area C, Level 2 – Pool ceiling ductwork and lighting support
- High School Main Entrance – curtain wall and canopy



# Progress Photos

- Area B, Level 2 – Bathroom tile



- Area A typical classroom – linoleum floor installation

