

Belmont Middle & High School Project Update

August 2020

August 2020 Work Performed

Field House

- Completed Summer 2020 Renovation Work, Including Application of Block Filler, Abatement, and Installation of Overhead MEPs.

Civil/Site Work

- Completed Geothermal Well Drilling and Piping.
- Started Construction of Permanent Roads.

General

- Continued Incorporating COVID-19 Provisions on Site for Safe Work Practices.
- Continued MEP/Fire Protection Piping, Conduit, and Ductwork Coordination and Installation.

Building A

- Completed Exterior Framing, and Sheathing.
- Continued Installation of MEP/FP System Rough.
- Completed Spray Fireproofing.
- Completed Roofing Installation of Air-Vapor Barrier (AVB) and Roof Curbs.
- Continued Installation of Classroom Window Frames.
- Completed Installation of Waterproofing AVB.
- Completed Installation of Stair #1.
- Started Installation of Masonry at Façade.

Building B

- Completed Under-slab Utility Installation.
- Continued Interior/Exterior Wall Layout and Top Track Installation.
- Continued Exterior Framing.
- Continued Sheathing.
- Continued Spray Fireproofing.
- Continued Roofing Installation of Air-Vapor Barrier (AVB) and Roof Curbs.
- Started Installation of Slab on Grade.
- Started Installation of Waterproofing AVB.
- Started Installation of Classroom Window Frames.
- Started Installation of Stair #2.
- Started Installation of Elevator Shaft.

Building C

- Continued Under-slab Utility Installation.
- Continued Interior/Exterior Wall Layout and Top Track Installation Prior to Spray Fireproofing.
- Started Installation of Overhead MEP hangers.
- Continued Spray Fireproofing.
- Started renovation of pool area.



Photo 1 – Start of Construction of Permanent Roads.



Photo 2 – Site Overview from Skanska Trailers.

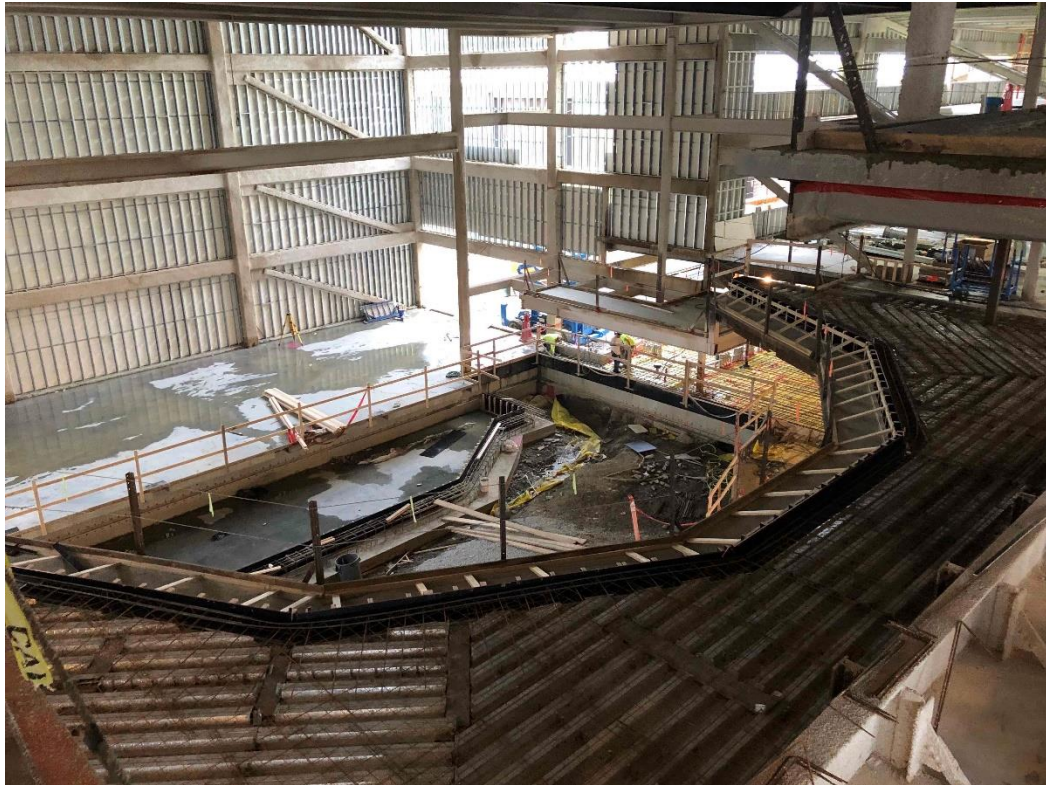


Photo 3 – Auditorium Rebar and Mesh in Place for Upcoming Slab on Deck Pours.



Photo 4 – Area B Slab on Grade Rebar Installed to Receive Pour (Electrical Room Area).



Photo 5 – Building B Stair #2 Being Installed.



Photo 6 – Insulation and Sheathing Installation on Low Roof of Building B.



Photo 7 – Brick Installation at Building A East and Sheathing Installation at Building C South.



Photo 8 – Building B with Classroom Window Frames/Temporary Plywood Installed.



Photo 9 – Spray-Foam Insulation Installed at Building C, Level 5 Skylight.

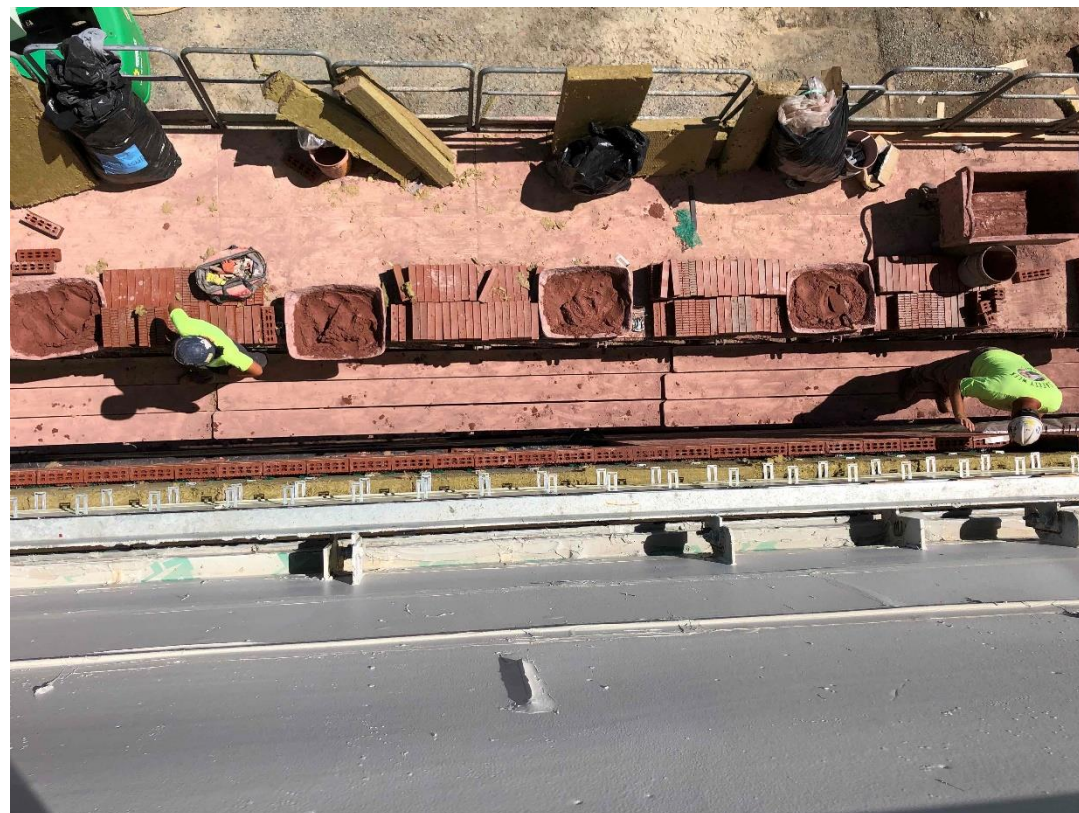


Photo 10 – Two Masons Install Bricks at Building A East Elevation.

September 2020 Look-Ahead

Building A

- Complete Sheathing, and Installation of AVB.
- Complete Installation of Ground Floor Window Frames and Temporary Plywood.
- Complete Interior Wall Layout and Top Track Installation.
- Continue Installation of MEP/FP Components.
- Continue Installation of Masonry at Façade.
- Start Drywall Installation.
- Start Glazing Installation.

Building B

- Complete Spray Fireproofing.
- Complete Installation of Stair #2
- Complete Exterior Wall Framing & Sheathing.
- Complete Interior Wall Layout and Top Track Installation.
- Complete Roofing Installation of Air-Vapor Barrier (AVB) and Roof Curbs.
- Complete Installation of Waterproofing AVB.
- Complete Concrete Slab on Grade Placements.
- Complete Installation of Elevator Shaft.
- Complete Installation of Early Walls.
- Continue Installation of MEP/FP Components.
- Complete Installation of Classroom Window Frames and Temporary Plywood.

Building C

- Start Concrete Slab on Grade Placements.
- Continue Installation of Roofing Materials.
- Continue Installation of AVB.
- Continue Installation of Exterior Framing and Sheathing.
- Continue Installation of Early Walls.
- Complete Spray Fireproofing.
- Complete Under-slab Utility Installation (Pending Variance).
- Continue Installation of MEP/FP Components.
- Continue Renovation of Pool Area.

Civil/Site Work

- Continue Construction of Permanent Roads.

General

- Continue MEP/FP Coordination .
- Continue Incorporating COVID-19 Provisions on Site for Safe Work Practices.