

# Belmont Middle & High School Project Update

November 2020



# Work Performed - November 2020

## **General**

- Continued Incorporating COVID-19 Provisions on Site for Safe Work Practices
- Started installation of temporary heating components

## **Building A**

- Completed Installation of masonry at façade
- Continued drywall installation and interior wall finishes
- Continued glass installation after masonry
- Started painting interior walls
- Started acoustical ceiling installation

## **Building B**

- Installed scaffolding in auditorium for ceiling work
- Continued installation of MEP/FP rough-in
- Continued installation of masonry at façade
- Continued installing catwalk in black box theater
- Continued installing High School elevator
- Started drywall installation and interior wall finishes

## **Building C**

- Continued concrete slab on grade placements
- Continued installation of AVB
- Continued installation of interior framing / early drywall
- Continued installation of MEP/FP components
- Continued renovation of pool area
- Started main switchgear installation
- Started installation of masonry at façade

# Look Ahead - December 2020

## **General**

- Complete temporary heat system
- Continue Incorporating COVID-19 Provisions on Site for Safe Work Practices

## **Building A**

- Complete installation of drywall
- Continue interior wall finishes
- Continue painting walls
- Continue installation of ceilings
- Start installation of tile

## **Building B**

- Complete installation of drywall
- Complete interior wall finishes
- Complete installing catwalk in auditorium and black box theater
- Complete installing High School elevator
- Continue installation of masonry at façade
- Continue drywall installation and interior wall finishes
- Start installation of ceilings

## **Building C**

- Complete installation of slab on grade
- Continue renovation of pool
- Continue installation of curtain wall glass
- Continue framing interior walls
- Start installation of drywall

# Progress Photos

- Room A307 interior paint and ceiling grid



- Switchgear in main electric room



# Progress Photos

- Catwalk in Black Box



- Temporary heat protection at HS main entrance



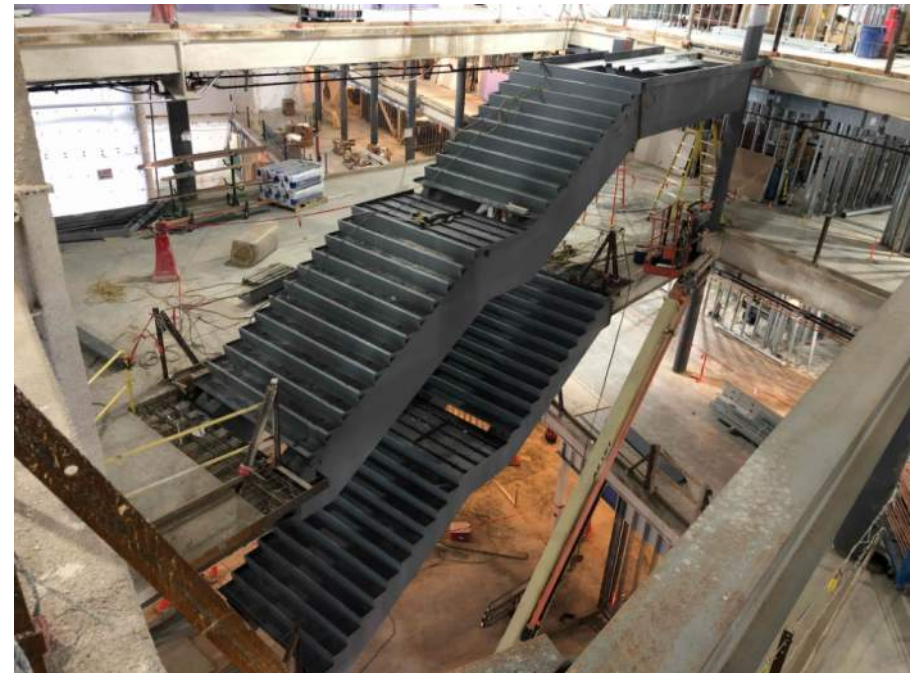


# Progress Photos

- North elevation of Area B façade

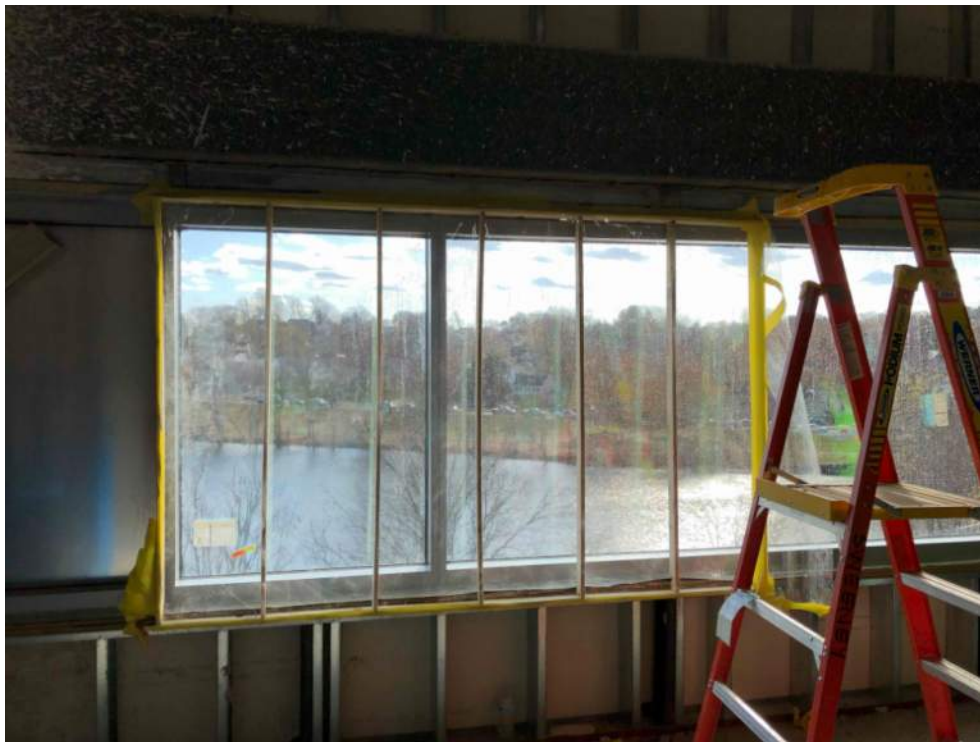


- Installation of Stair #3



# Progress Photos

- Air / moisture tightness test on Area C window



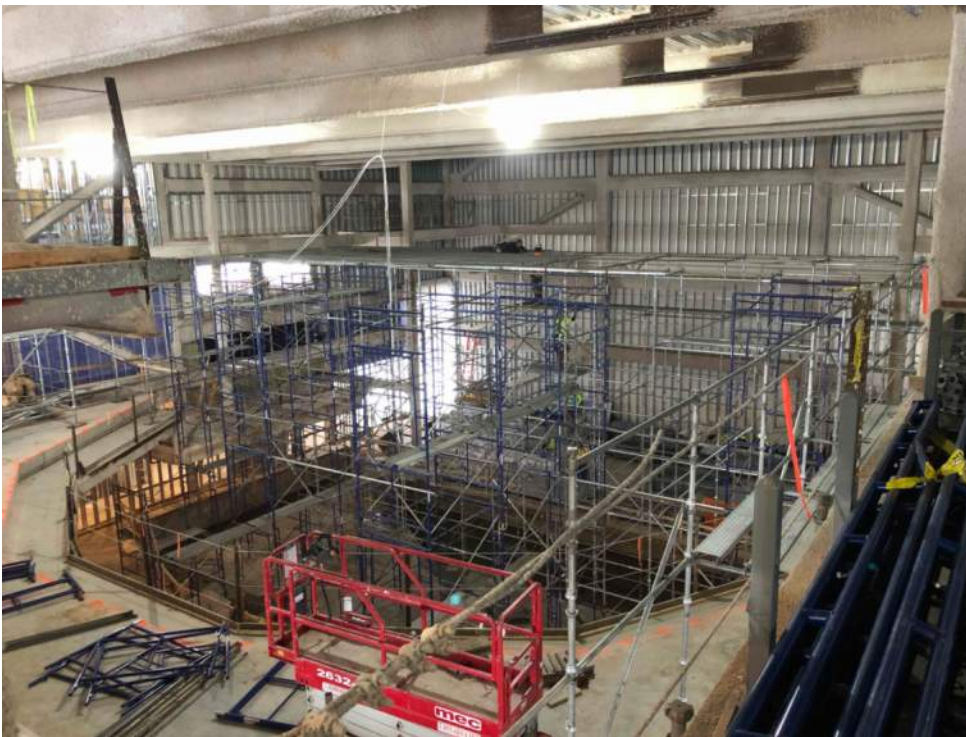
- Installation of area C East slab on grade





# Progress Photos

- Installation of scaffolding for Auditorium ceiling



- Temp heat protection for brick install at area A West elevation at Arcade

