

**Perkins&Will**

# **Interior Finish Presentation**

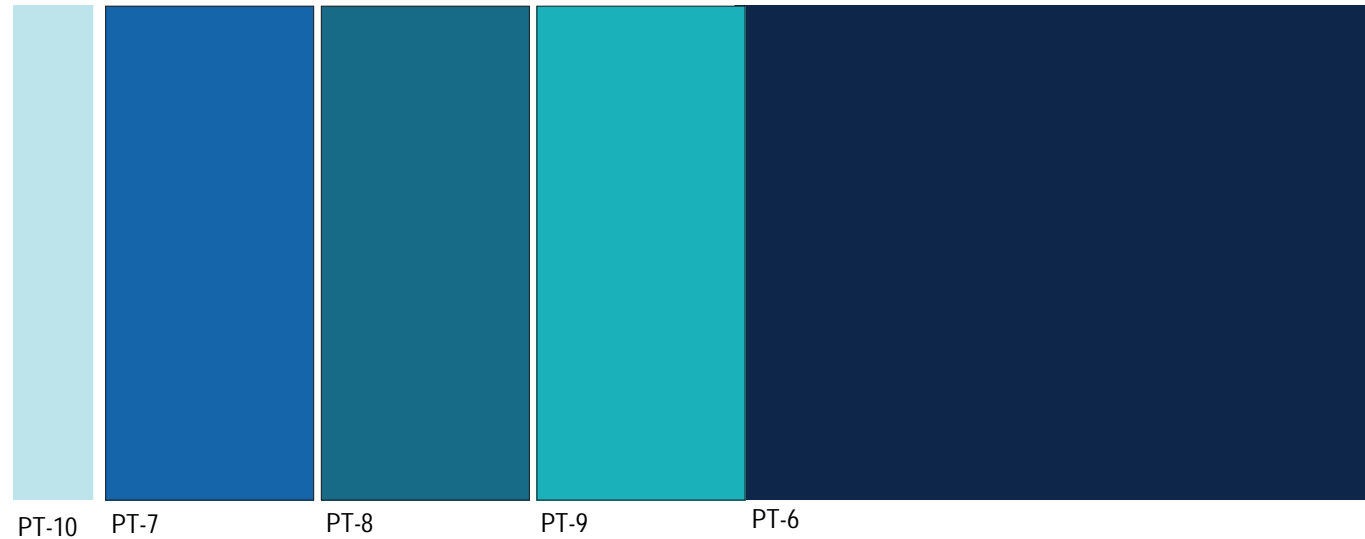
**Building Committee Meeting**

**February 4, 2021**

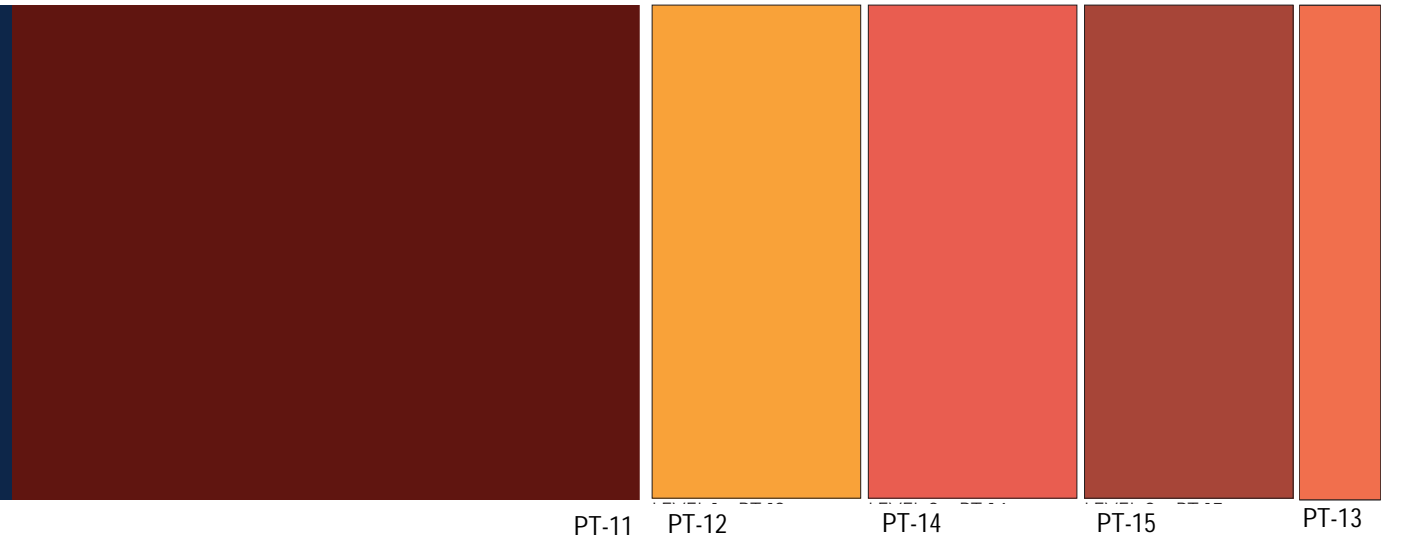
# BELMONT PROJECT COLOR SCHEME



## HIGH SCHOOL



## MIDDLE SCHOOL



# ACCENT WALLS: LEVEL 01

## ACCENT FINISHES LEGEND

- PAINTED WOOD BLOCK BETWEEN WALL PANELS
- BLUE WALL TILE
- PT-6
- PT-7
- PT-8
- PT-9
- PT-10
- PT-11
- PT-12
- PT-13
- PT-14
- PT-15

**FIELD HOUSE STRIPING:**  
COLORS SELECTED TO MATCH BRAND COLORS (PT-6 & PT-11)

**FIELD HOUSE BLEACHERS:**  
CUSTOM COLOR & GRAPHICS TO MATCH BRAND COLORS

**ATHLETICS:**  
ACCENT TILE TO MATCH PT-6

**MS LEVEL 02 CLASSROOMS:**  
- PT-12 ACCENT WALLS  
- PT-12 PAINTED DOORS  
- PT-12 PLAM COUNTERTOPS

**MS CONF. ROOMS:**  
PT-15 ACCENT WALLS

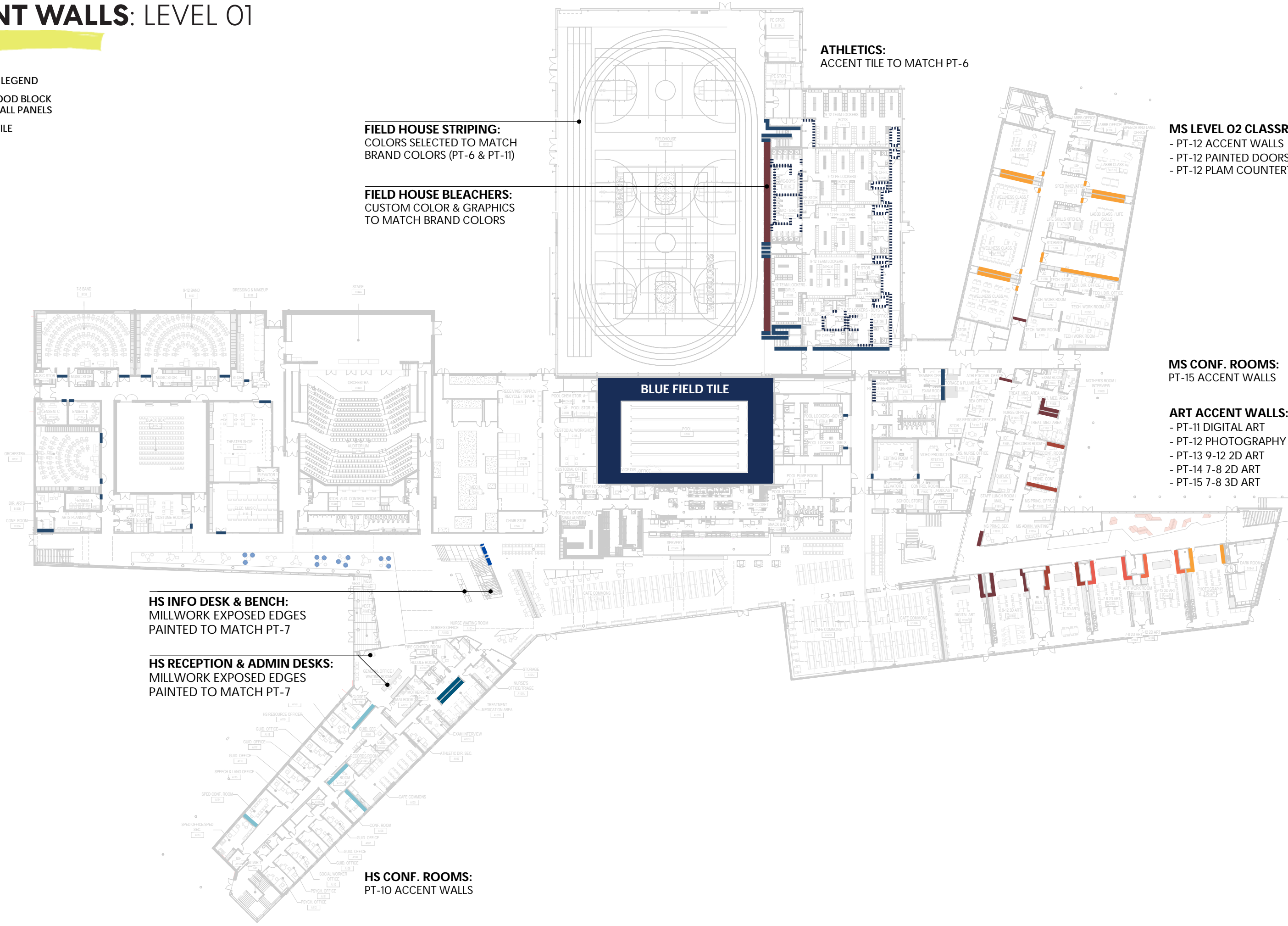
**ART ACCENT WALLS:**  
- PT-11 DIGITAL ART  
- PT-12 PHOTOGRAPHY  
- PT-13 9-12 2D ART  
- PT-14 7-8 2D ART  
- PT-15 7-8 3D ART

**BLUE FIELD TILE**

**HS INFO DESK & BENCH:**  
MILLWORK EXPOSED EDGES  
PAINTED TO MATCH PT-7

**HS RECEPTION & ADMIN DESKS:**  
MILLWORK EXPOSED EDGES  
PAINTED TO MATCH PT-7

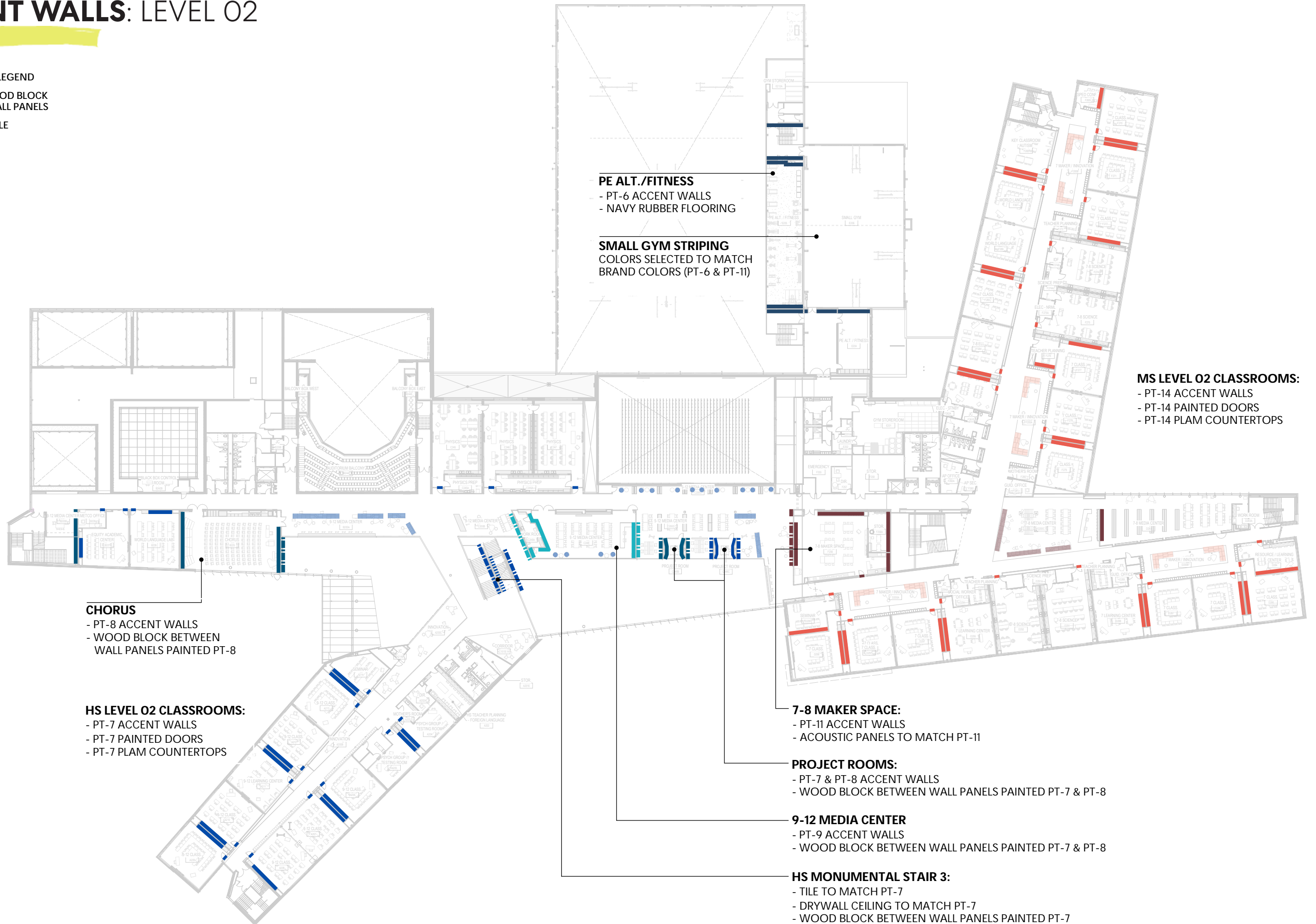
**HS CONF. ROOMS:**  
PT-10 ACCENT WALLS



# ACCENT WALLS: LEVEL 02

## ACCENT FINISHES LEGEND

- PAINTED WOOD BLOCK BETWEEN WALL PANELS
- BLUE WALL TILE
- PT-6
- PT-7
- PT-8
- PT-9
- PT-10
- PT-11
- PT-12
- PT-13
- PT-14
- PT-15



**PE ALT./FITNESS**  
 - PT-6 ACCENT WALLS  
 - NAVY RUBBER FLOORING

**SMALL GYM STRIPING**  
 COLORS SELECTED TO MATCH BRAND COLORS (PT-6 & PT-11)

**MS LEVEL 02 CLASSROOMS:**  
 - PT-14 ACCENT WALLS  
 - PT-14 PAINTED DOORS  
 - PT-14 PLAM COUNTERTOPS

**CHORUS**  
 - PT-8 ACCENT WALLS  
 - WOOD BLOCK BETWEEN WALL PANELS PAINTED PT-8

**HS LEVEL 02 CLASSROOMS:**  
 - PT-7 ACCENT WALLS  
 - PT-7 PAINTED DOORS  
 - PT-7 PLAM COUNTERTOPS

**7-8 MAKER SPACE:**  
 - PT-11 ACCENT WALLS  
 - ACOUSTIC PANELS TO MATCH PT-11

**PROJECT ROOMS:**  
 - PT-7 & PT-8 ACCENT WALLS  
 - WOOD BLOCK BETWEEN WALL PANELS PAINTED PT-7 & PT-8

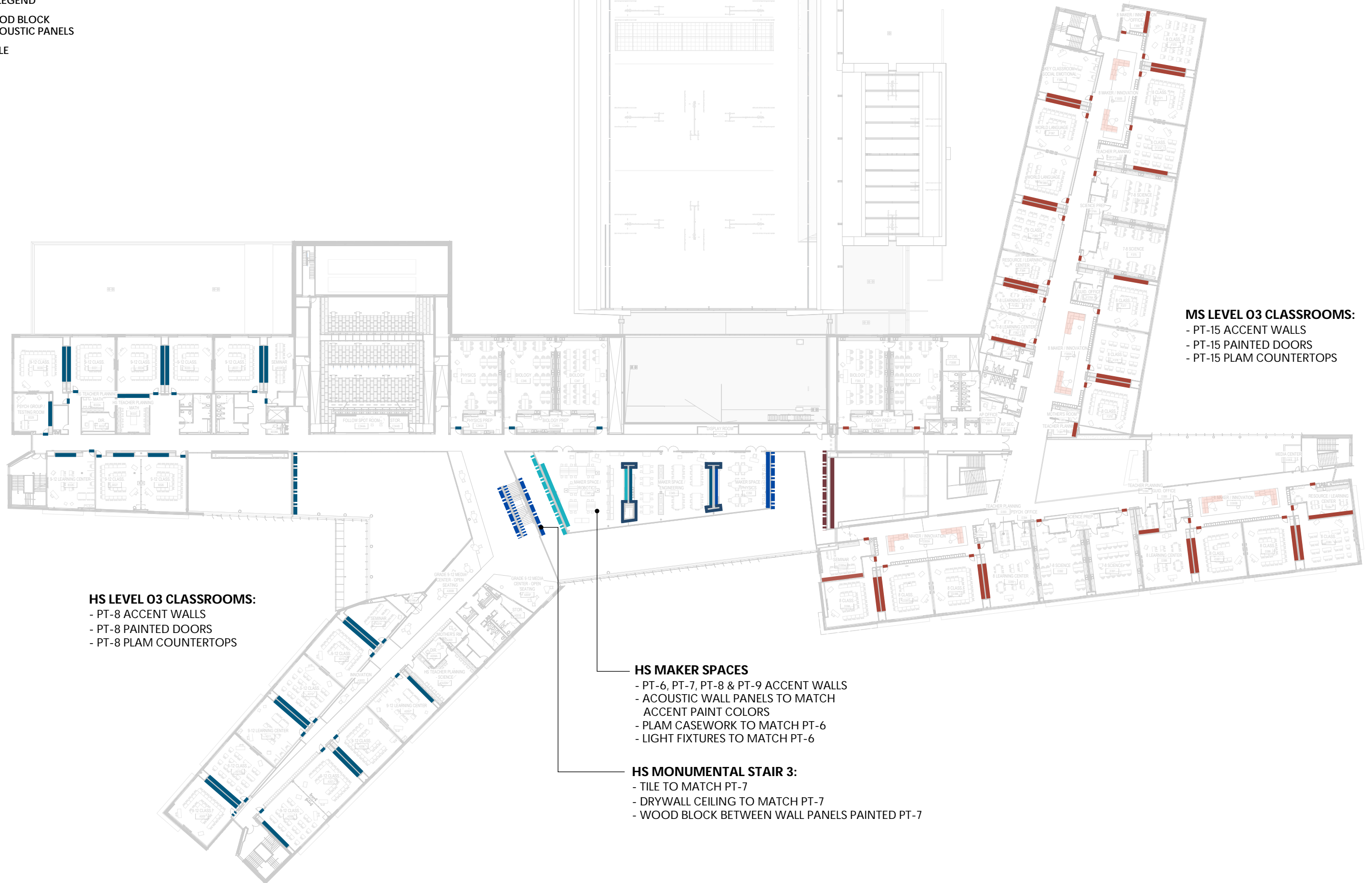
**9-12 MEDIA CENTER**  
 - PT-9 ACCENT WALLS  
 - WOOD BLOCK BETWEEN WALL PANELS PAINTED PT-7 & PT-8

**HS MONUMENTAL STAIR 3:**  
 - TILE TO MATCH PT-7  
 - DRYWALL CEILING TO MATCH PT-7  
 - WOOD BLOCK BETWEEN WALL PANELS PAINTED PT-7

# ACCENT WALLS: LEVEL 03

## ACCENT FINISHES LEGEND

- PAINTED WOOD BLOCK BETWEEN ACOUSTIC PANELS
- BLUE WALL TILE
- PT-6
- PT-7
- PT-8
- PT-9
- PT-10
- PT-11
- PT-12
- PT-13
- PT-14
- PT-15



**HS LEVEL 03 CLASSROOMS:**  
 - PT-8 ACCENT WALLS  
 - PT-8 PAINTED DOORS  
 - PT-8 PLAM COUNTERTOPS

**HS MAKER SPACES**  
 - PT-6, PT-7, PT-8 & PT-9 ACCENT WALLS  
 - ACOUSTIC WALL PANELS TO MATCH ACCENT PAINT COLORS  
 - PLAM CASEWORK TO MATCH PT-6  
 - LIGHT FIXTURES TO MATCH PT-6

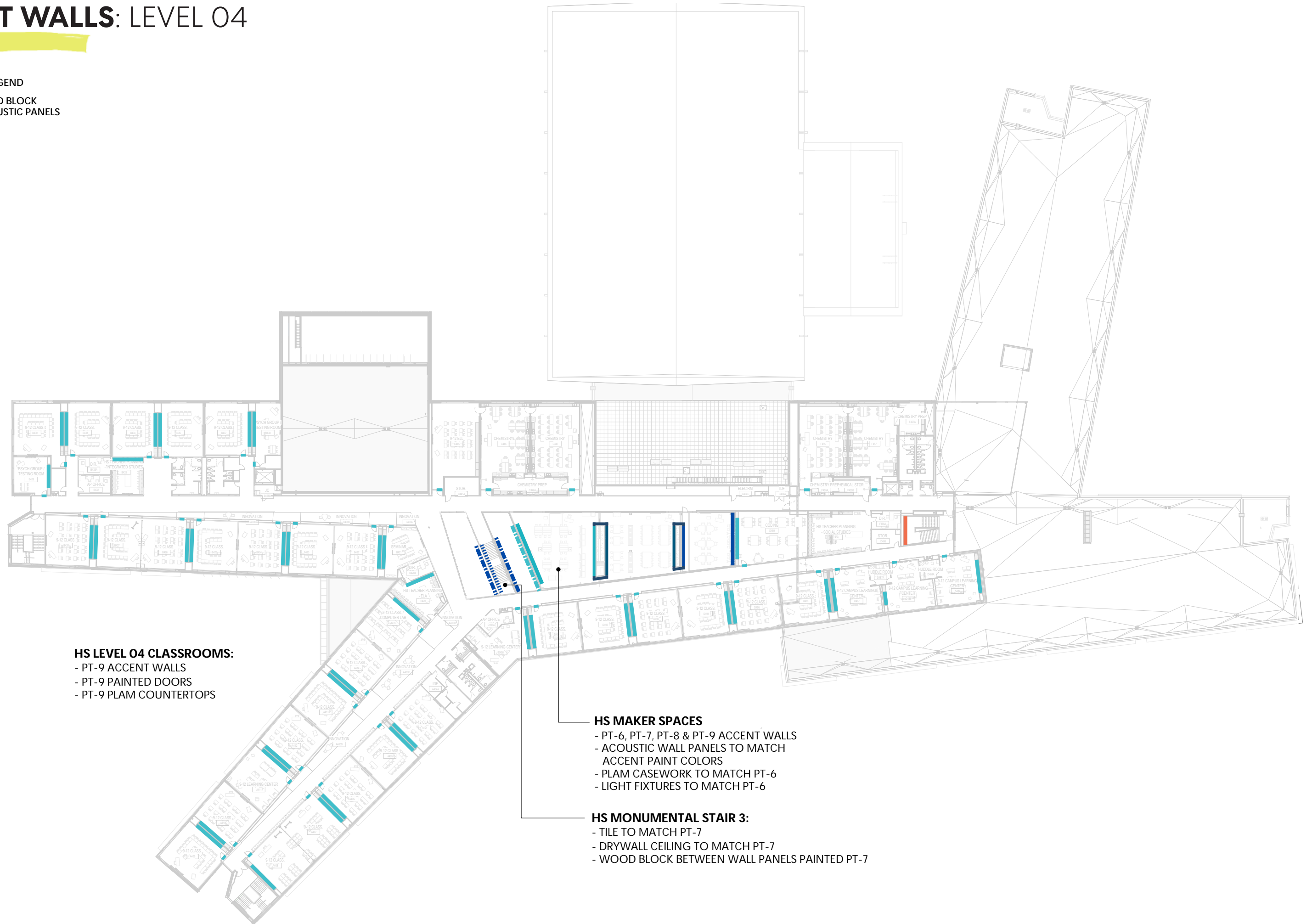
**HS MONUMENTAL STAIR 3:**  
 - TILE TO MATCH PT-7  
 - DRYWALL CEILING TO MATCH PT-7  
 - WOOD BLOCK BETWEEN WALL PANELS PAINTED PT-7

**MS LEVEL 03 CLASSROOMS:**  
 - PT-15 ACCENT WALLS  
 - PT-15 PAINTED DOORS  
 - PT-15 PLAM COUNTERTOPS

# ACCENT WALLS: LEVEL 04

## ACCENT FINISHES LEGEND

- PAINTED WOOD BLOCK BETWEEN ACOUSTIC PANELS
- BLUE WALL TILE
- PT-6
- PT-7
- PT-8
- PT-9
- PT-10
- PT-11
- PT-12
- PT-13
- PT-14
- PT-15



**HS LEVEL 04 CLASSROOMS:**  
 - PT-9 ACCENT WALLS  
 - PT-9 PAINTED DOORS  
 - PT-9 PLAM COUNTERTOPS

**HS MAKER SPACES**  
 - PT-6, PT-7, PT-8 & PT-9 ACCENT WALLS  
 - ACOUSTIC WALL PANELS TO MATCH ACCENT PAINT COLORS  
 - PLAM CASEWORK TO MATCH PT-6  
 - LIGHT FIXTURES TO MATCH PT-6

**HS MONUMENTAL STAIR 3:**  
 - TILE TO MATCH PT-7  
 - DRYWALL CEILING TO MATCH PT-7  
 - WOOD BLOCK BETWEEN WALL PANELS PAINTED PT-7

# RENDERING: MIDDLE SCHOOL CLASSROOMS

LEVEL 3 - PT-15  
MS Classrooms

LEVEL 2 - PT-14  
MS Classrooms

LEVEL 1 - PT-12  
Wellness, OT/PT, & LABBB Classrooms



MIDDLE SCHOOL



MIDDLE SCHOOL



MIDDLE SCHOOL

# RENDERING: HIGH SCHOOL CLASSROOMS

LEVEL 4 - PT-9  
HS Classrooms

LEVEL 3 - PT-8  
HS Classrooms

LEVEL 2 - PT-7  
HS Classrooms



HIGH SCHOOL



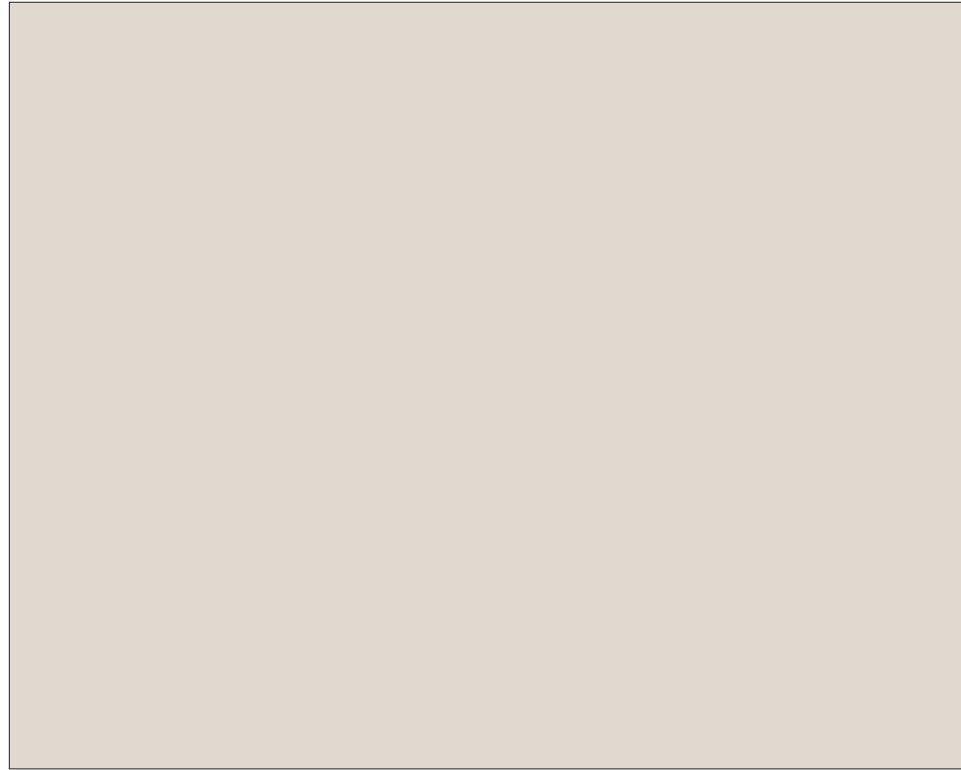
HIGH SCHOOL



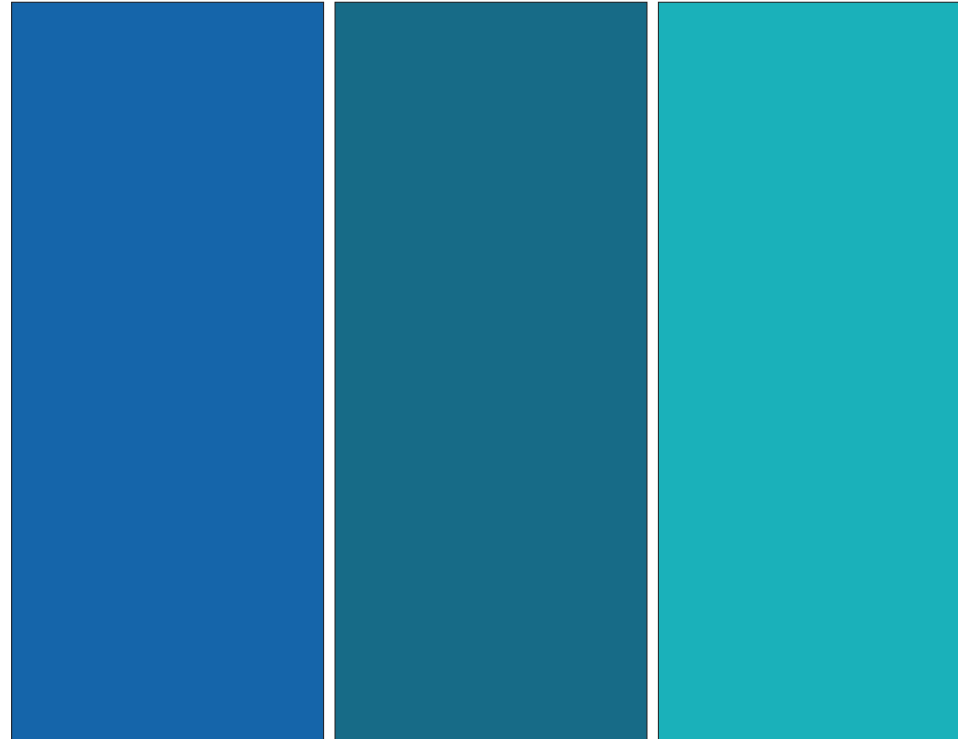
HIGH SCHOOL



# CORE ACADEMIC: HIGH SCHOOL CLASSROOM



**WALL FINISH**  
PT-2



LEVEL 2 - PT-7      LEVEL 3 - PT-8      LEVEL 4 - PT-9

**MULTIPLE WALL/ACCENT FINISH**



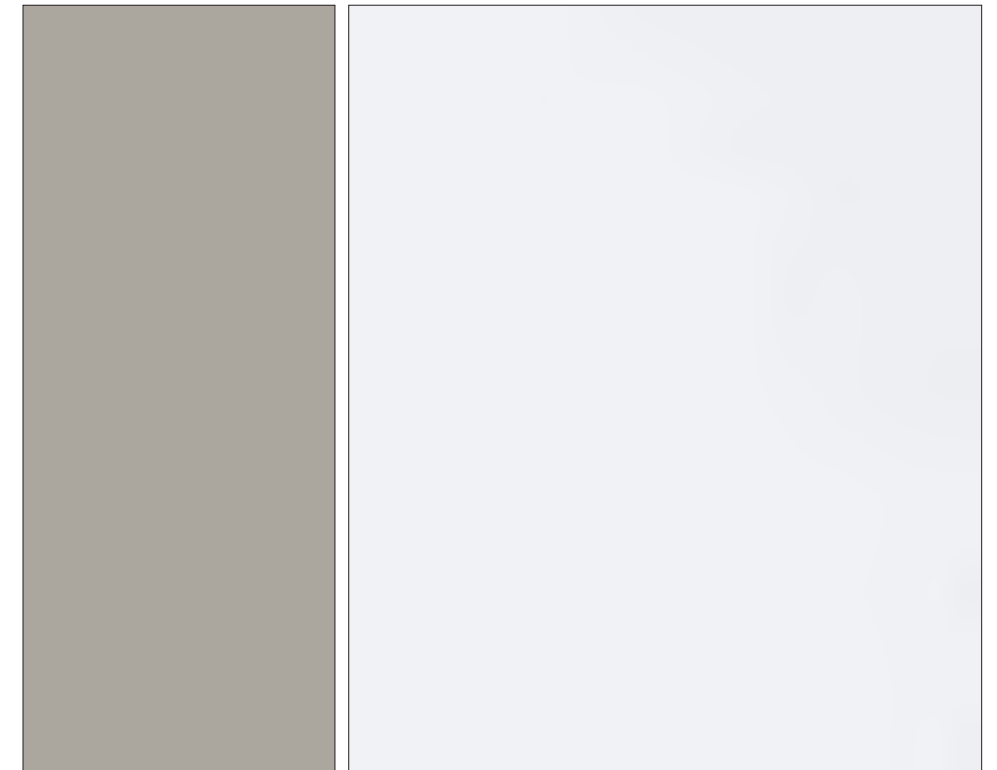
**FLOOR FINISH**  
RF-2



WD-1

CORK TACKABLE PANEL

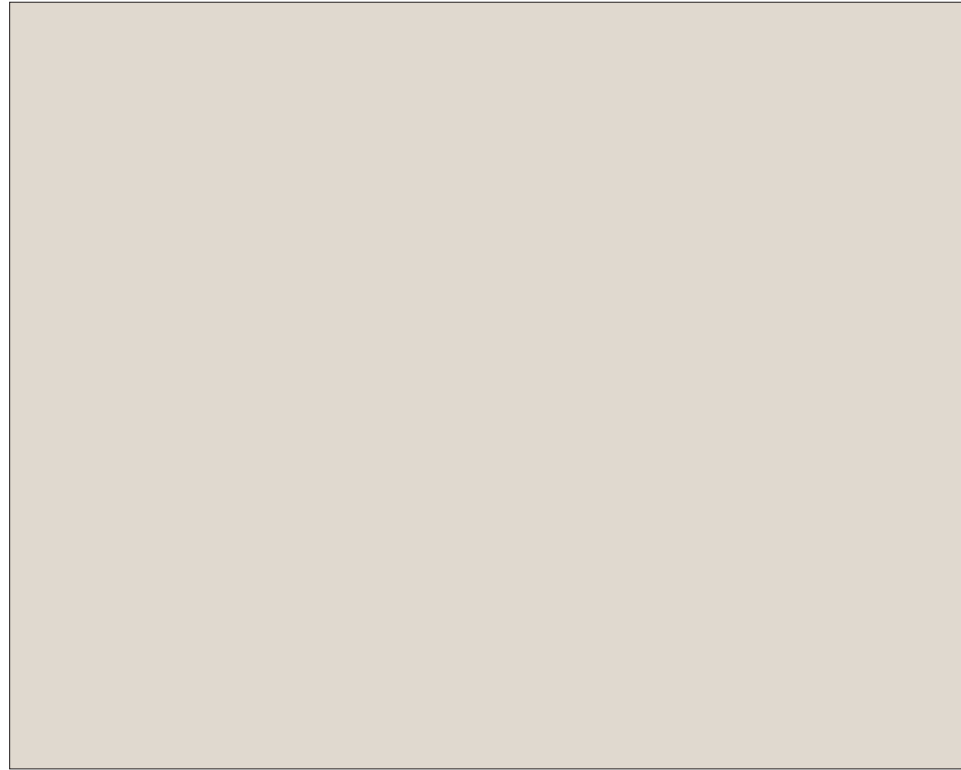
**MILLWORK**



**MULLION FINISH**  
PT-4

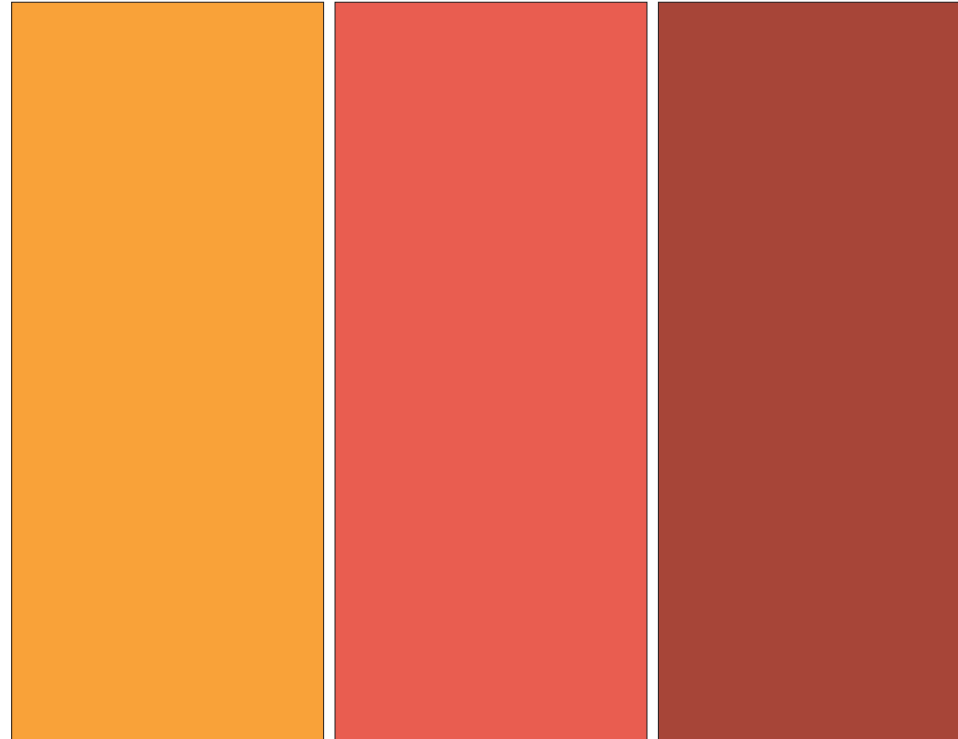
**MARKERBOARD**

# CORE ACADEMIC: MIDDLE SCHOOL CLASSROOM



**WALL FINISH**

PT-2



LEVEL 1 - PT-12

LEVEL 2 - PT-14

LEVEL 3 - PT-15

**MULTIPLE WALL/ACCENT FINISH**



**FLOOR FINISH**

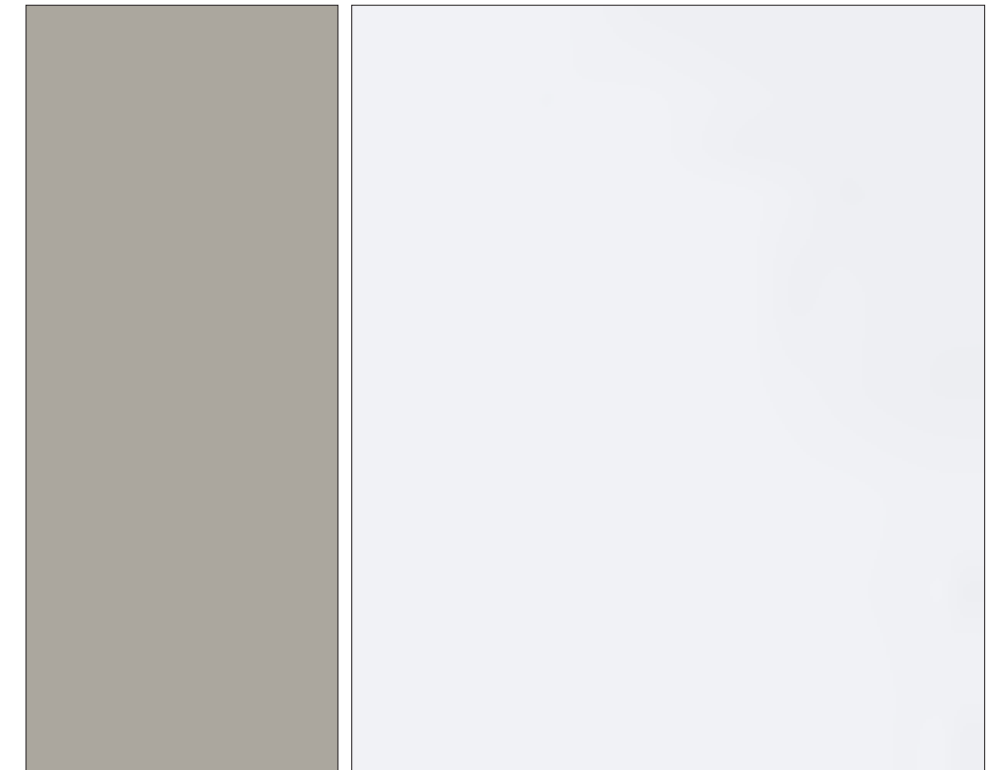
RF-2



WD-1

CORK TACKABLE PANEL

**MILLWORK**

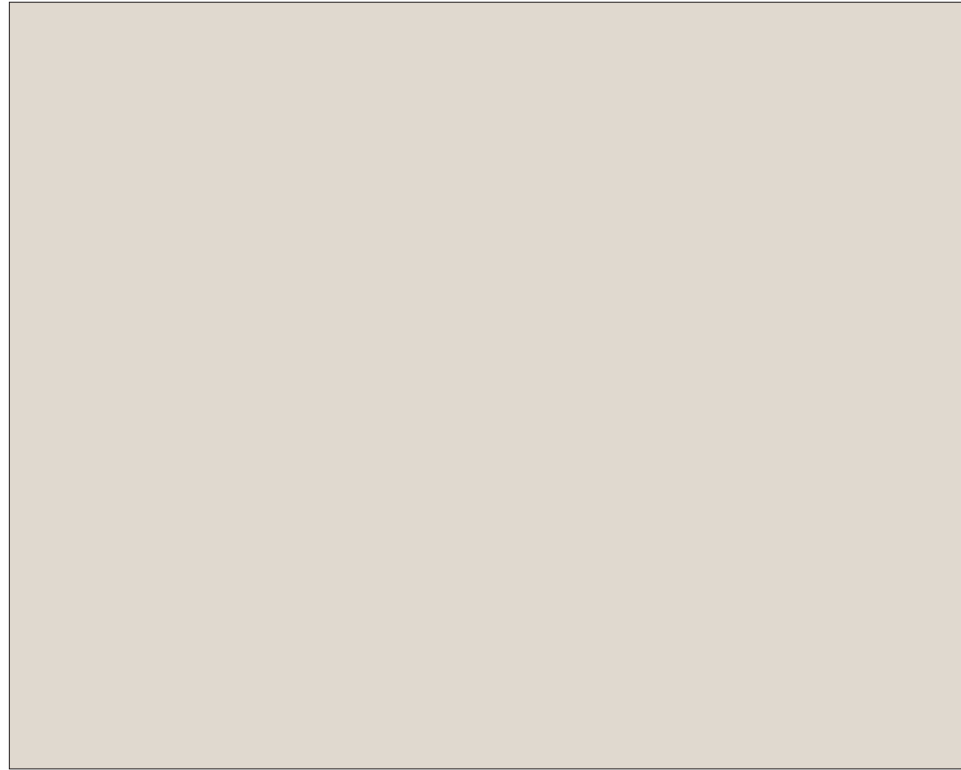


**MULLION FINISH**

PT-4

**MARKERBOARD**

# CORE ACADEMIC: TEACHER PLANNING



**WALL FINISH**

PT-2



**COUNTERTOP**

PL-15



**FLOOR FINISH**

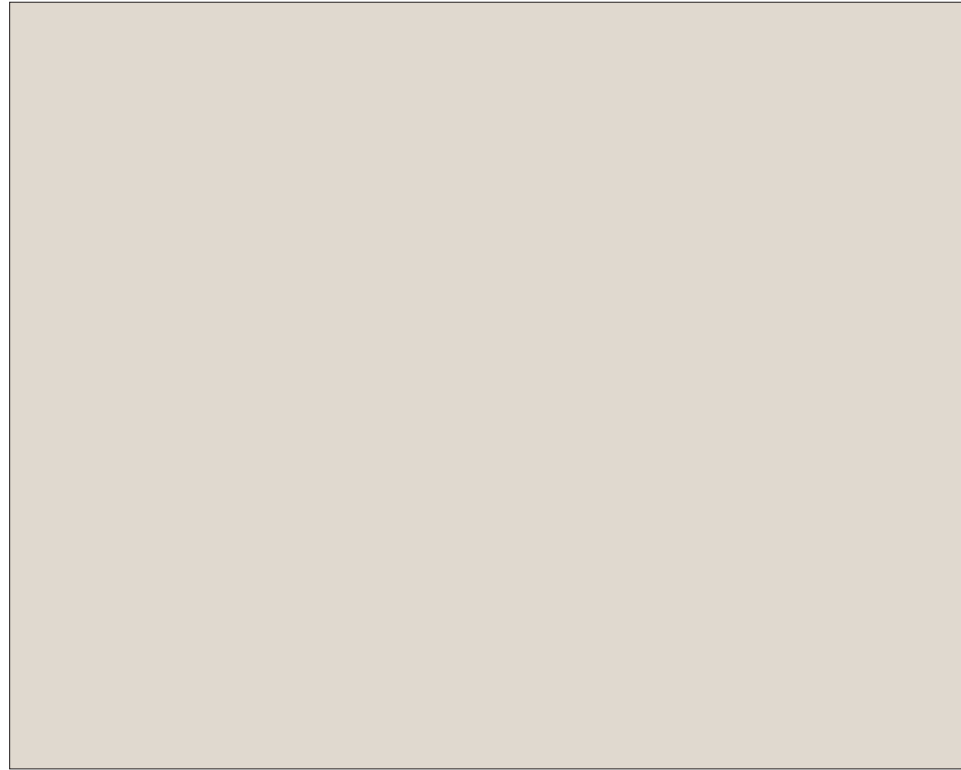
RF-2



**CASEWORK**

WD-1

# CORE ACADEMIC: SCIENCE CLASSROOMS



**WALL FINISH**

PT-2



**EPOXY COUNTERTOP**



**FLOOR FINISH**

RF-2



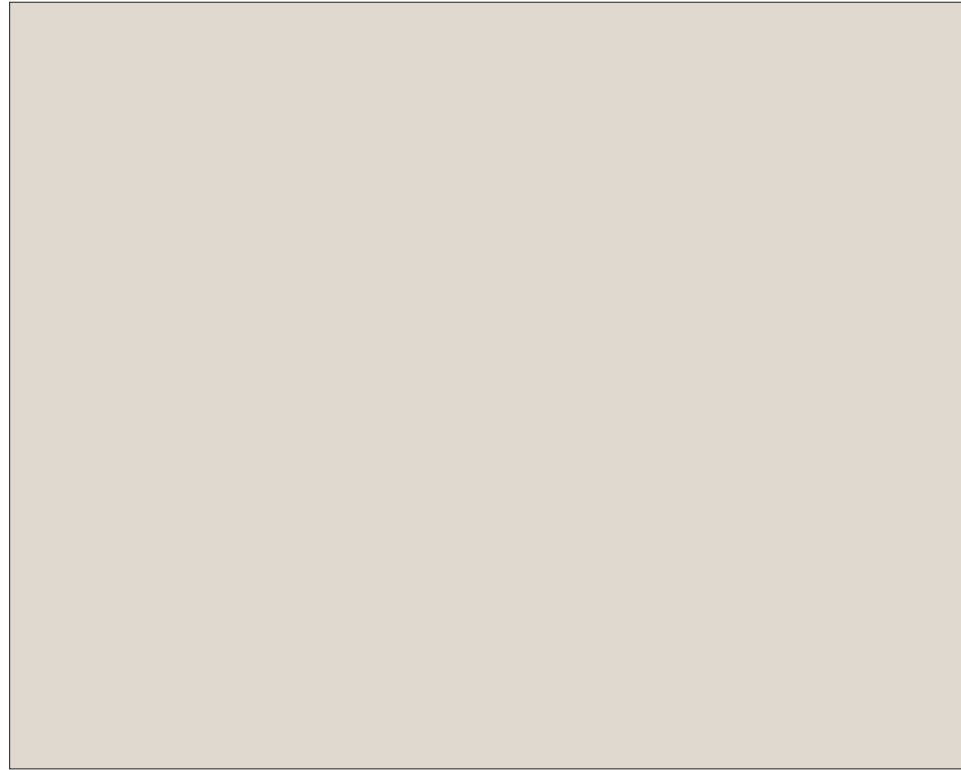
**CASEWORK**

# RENDERING: ART CORRIDOR

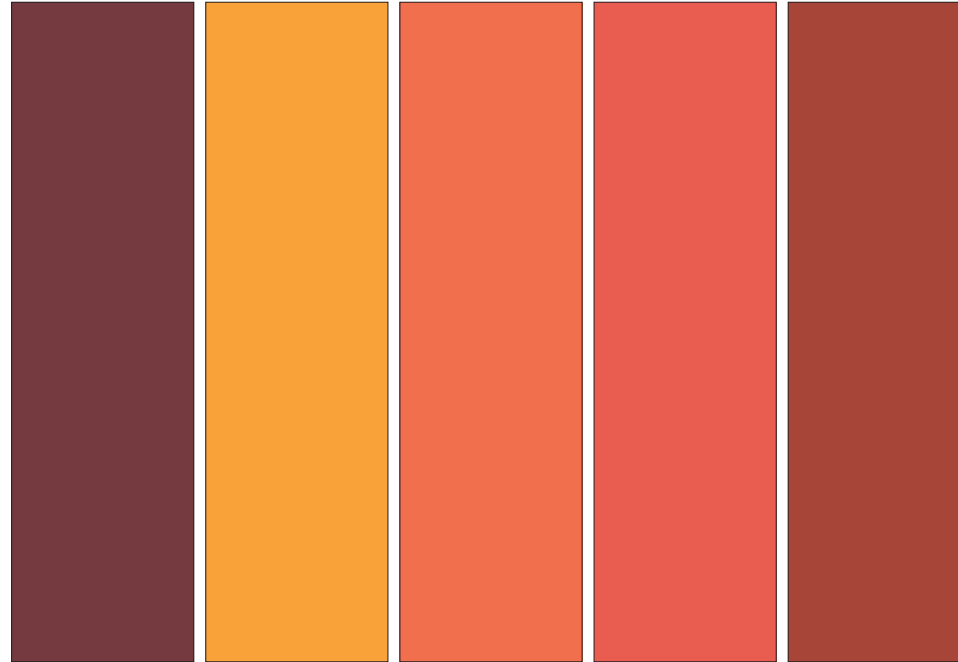


RENDERING FOR VISUAL REFERENCE ONLY

# ART CLASSROOM



**WALL FINISH**  
PT-2

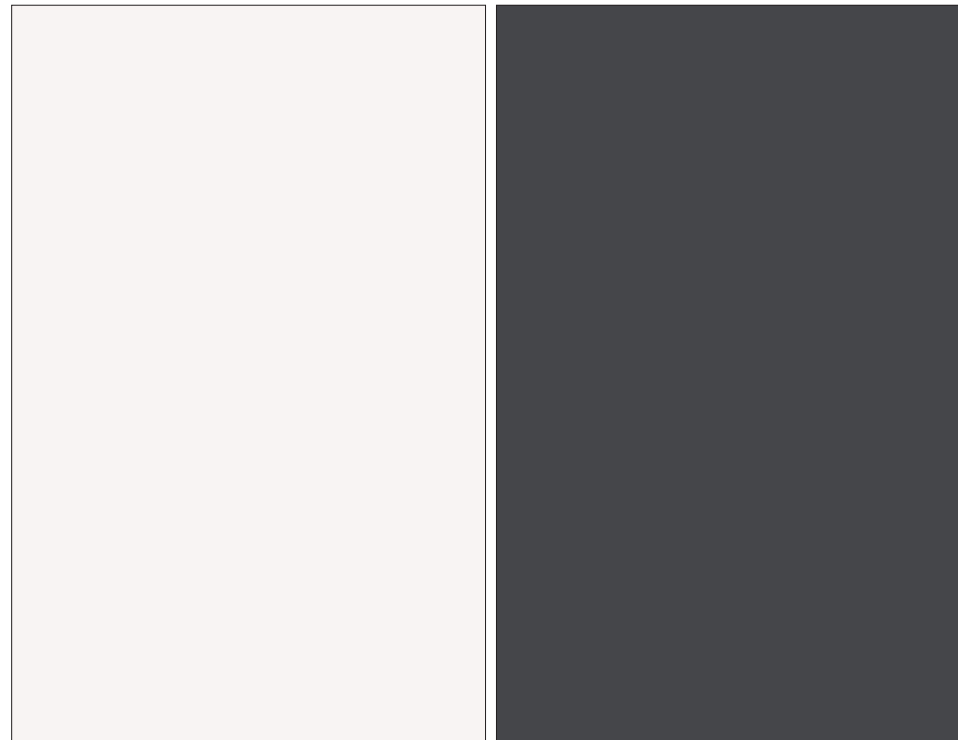


DIG. ART/  
9-12 3D ART  
PT-11      PHOTOG-  
RAPHY  
PT-12      9-12 2D ART  
PT-13      7-8 2D ART  
PT-14      7-8 3D ART  
PT-15

**MULTIPLE WALL/ACCENT FINISH**



**FLOOR FINISH**  
CF-2



PL-11      PL-14  
**DRY-ERASE MARKERBOARD/SHELVING & COUNTERTOP**



EPOXY COUNTERTOP      WD-1  
**CASEWORK**

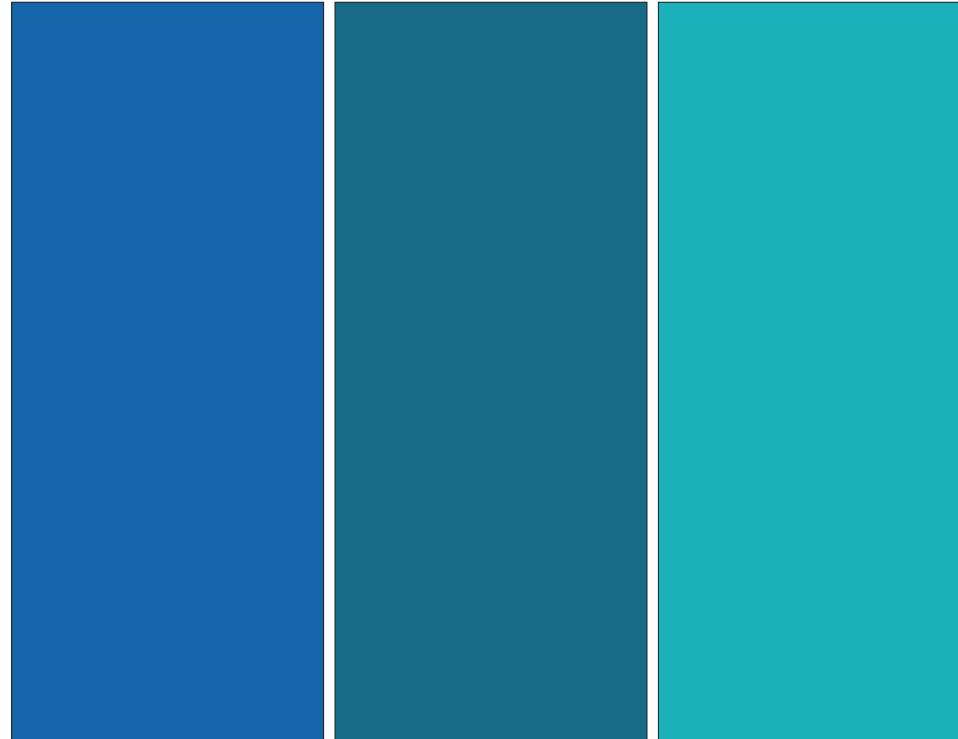
# RENDERING: HIGH SCHOOL MAKER SPACE



# VOCATIONAL: HIGH SCHOOL MAKER SPACE



**WALL FINISH**  
PT-3

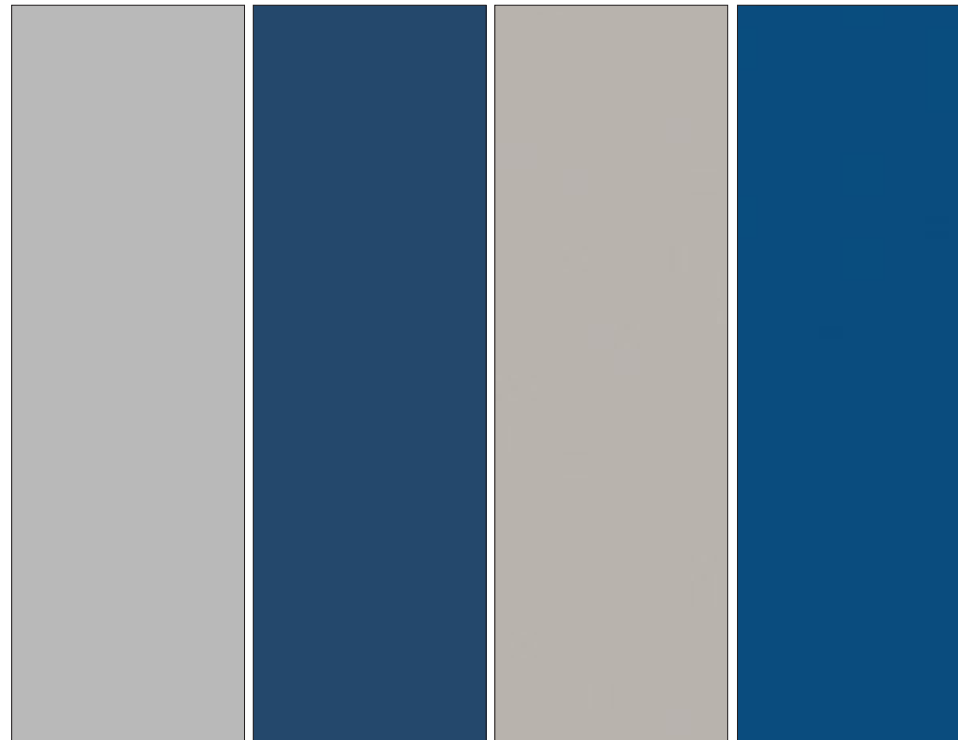


PHYSICS - PT-7      ENGINEERING - PT-8      ROBOTICS - PT-9

**MULTIPLE WALL/ACCENT FINISH**



**FLOOR FINISH**  
CF-2



EPOXY      PT-6      PL-15      PL-17

**CASEWORK**

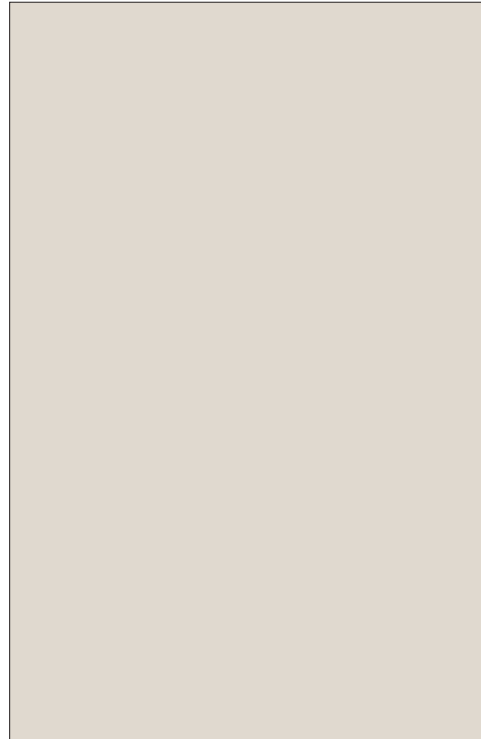


AWP-11A (PT-6)      AWP-11B (PT-7)      AWP-11C (PT-9)

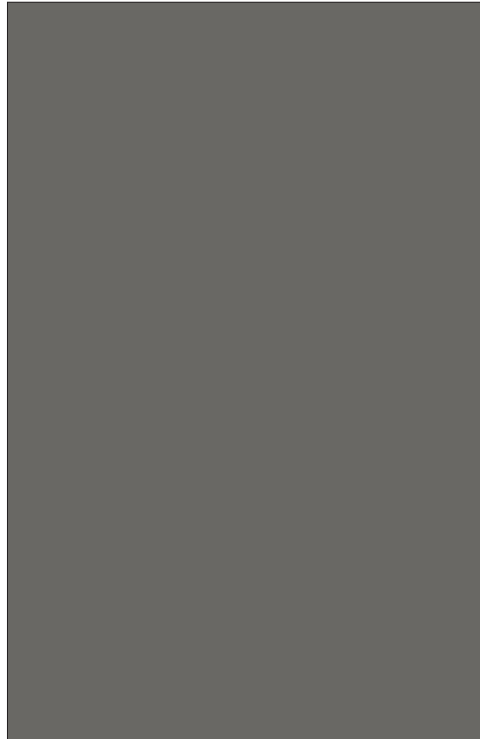
**ACOUSTIC WALL PANEL**



# VOCATIONAL: MIDDLE SCHOOL MAKER SPACE

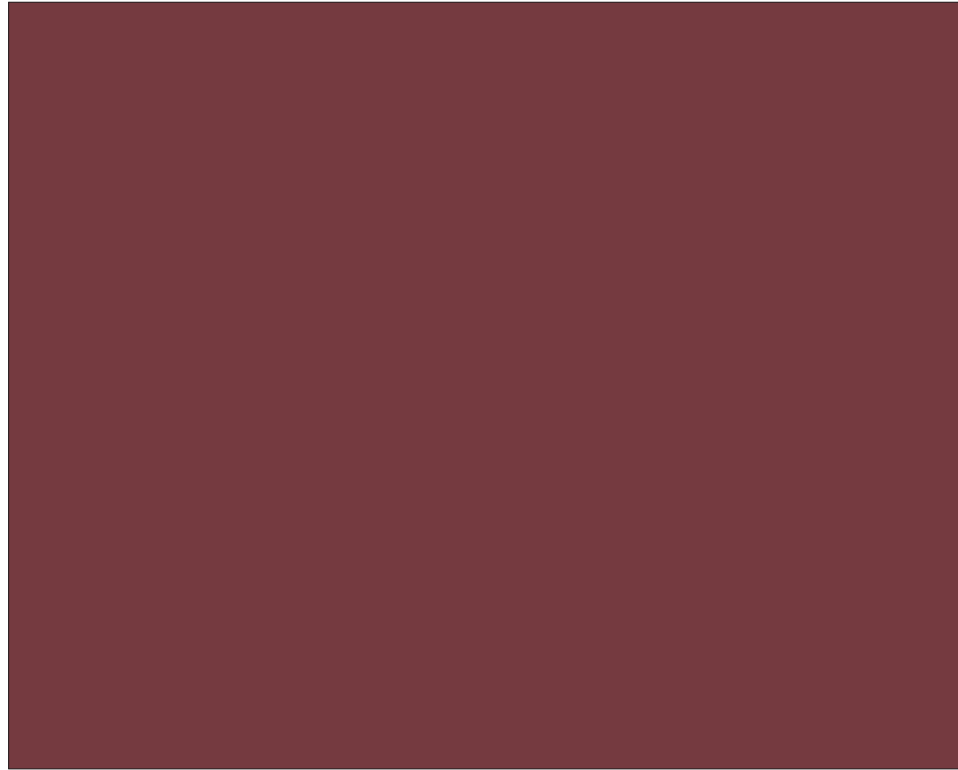


PT-2



PT-3

**MULTIPLE WALL/WALL FINISH**



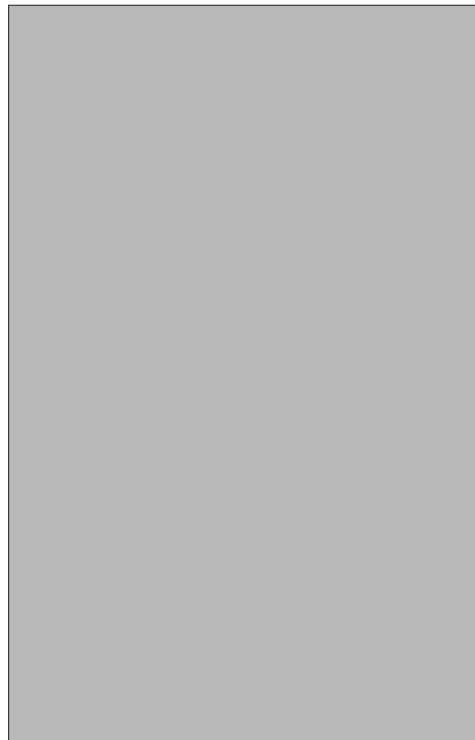
**ACCENT WALL**

PT-11



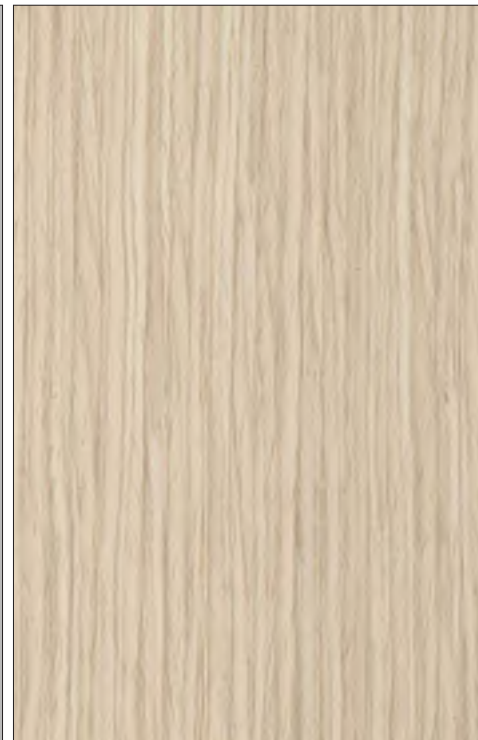
**FLOOR FINISH**

CF-2



EPOXY COUNTERTOP

**CASEWORK**



WD-1, WD-3



**ACOUSTIC WALL PANEL**

AWP-11D

# RENDERING: HIGH SCHOOL ENTRY AREA



# HIGH SCHOOL ENTRY AREA

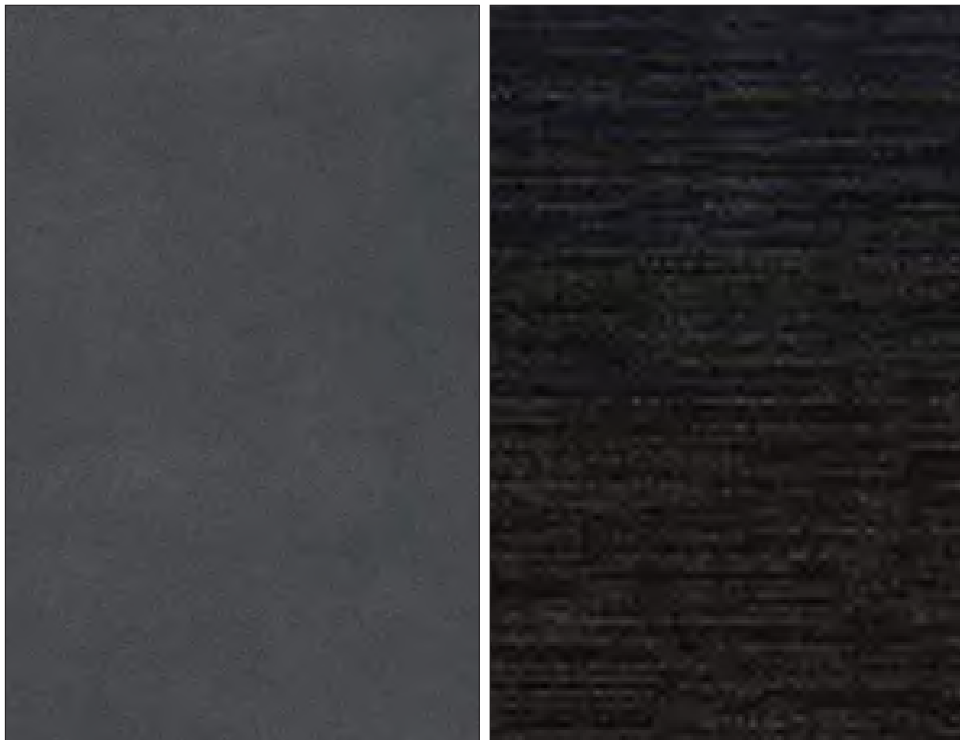


**WALL FINISH**  
PT-1



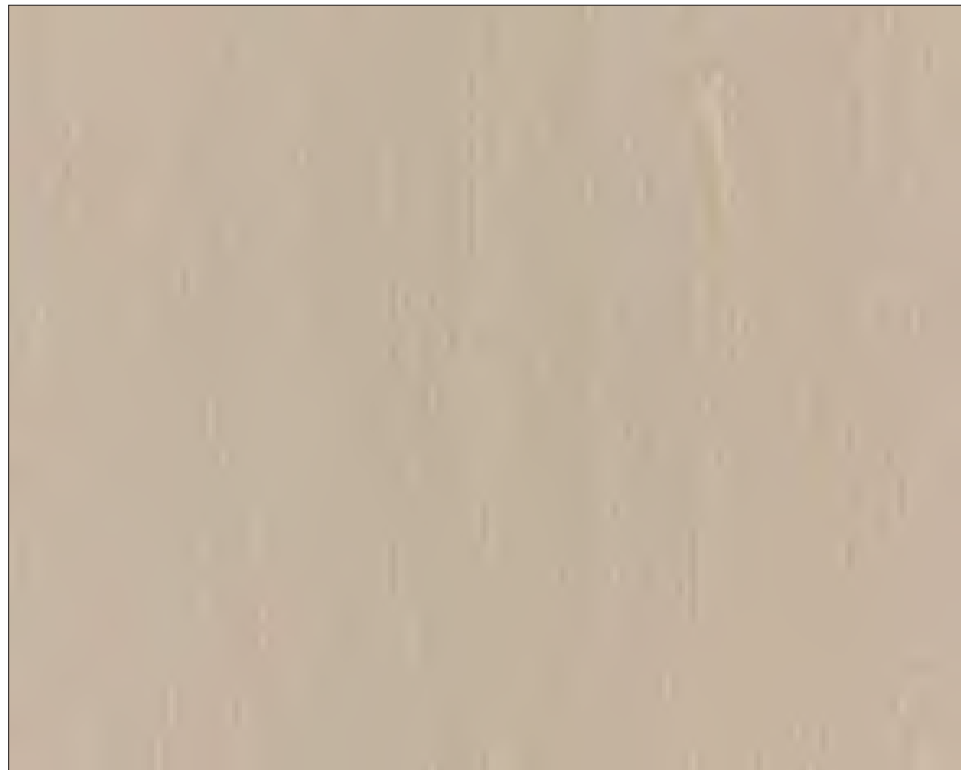
**WALL TILE FINISH**  
CT-8B

*RENDERING FOR VISUAL REFERENCE ONLY*

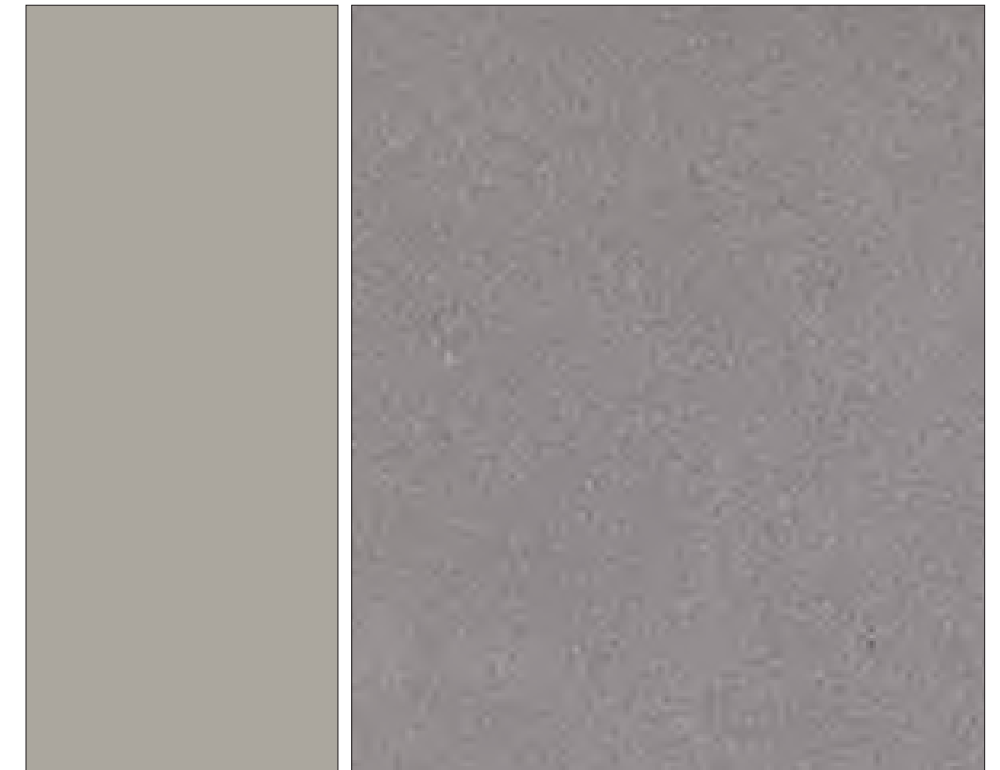


CT-1, CT-2      CPT-1A

**FLOOR FINISH**



**WALL PANEL FINISH**  
WVP-2



**PERF. METAL FINISH**    **GFRG FINISH**  
PT-4                              GFRG-1

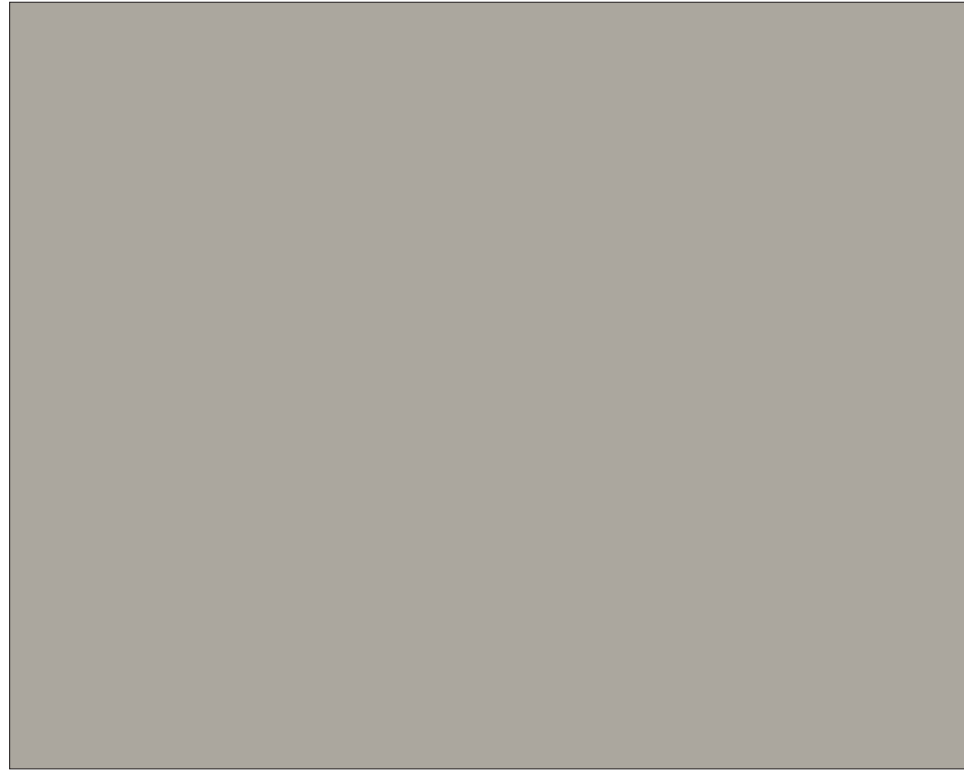
## **FINISHES AND MATERIALS:** HIGH SCHOOL ENTRY AREA



# RENDERING: MIDDLE SCHOOL ENTRY AREA



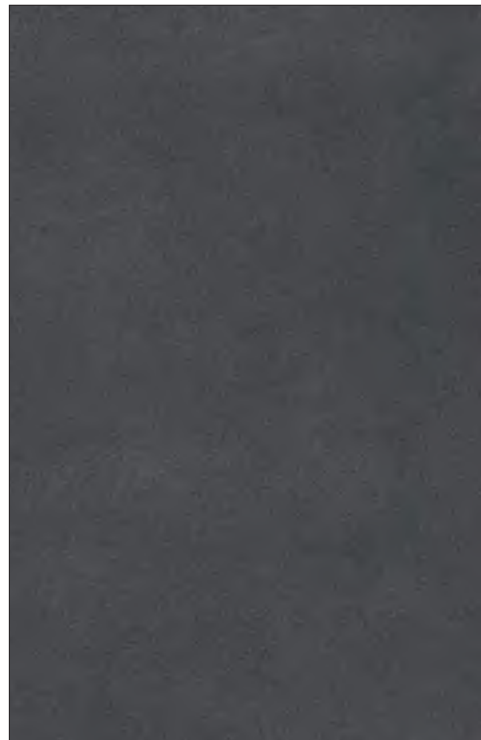
# MIDDLE SCHOOL ENTRY AREA



**WALL FINISH**  
PT-4

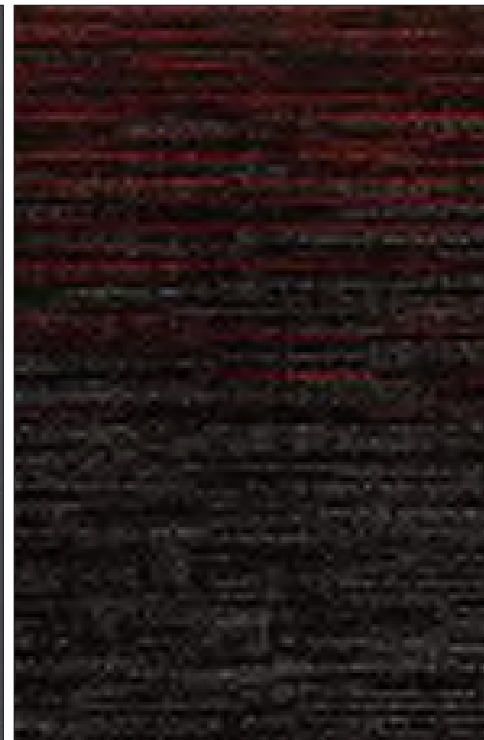


**WALL TILE FINISH**  
CT-8B



CT-1, CT-2

**FLOOR FINISH**



CPT-1B



**MULLION FINISH**  
PT-4



**DISPLAY CASE FINISH**  
TP-1B

## **FINISHES AND MATERIALS:** MIDDLE SCHOOL ENTRY AREA

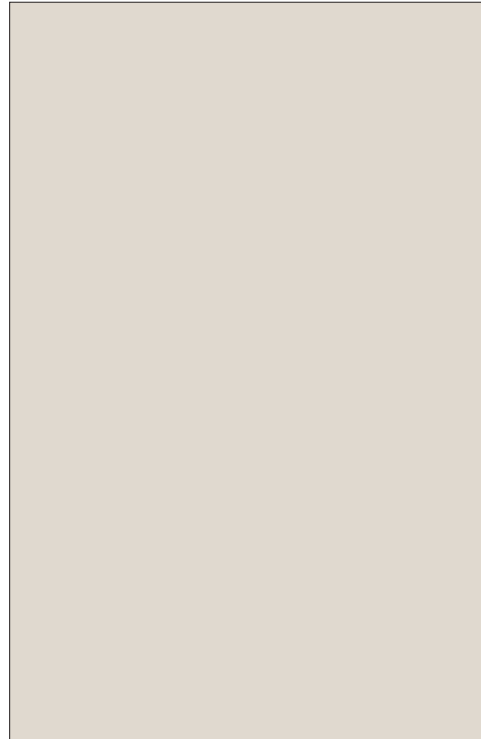


# RENDERING: HIGH SCHOOL MAKER/INNOVATION SPACES

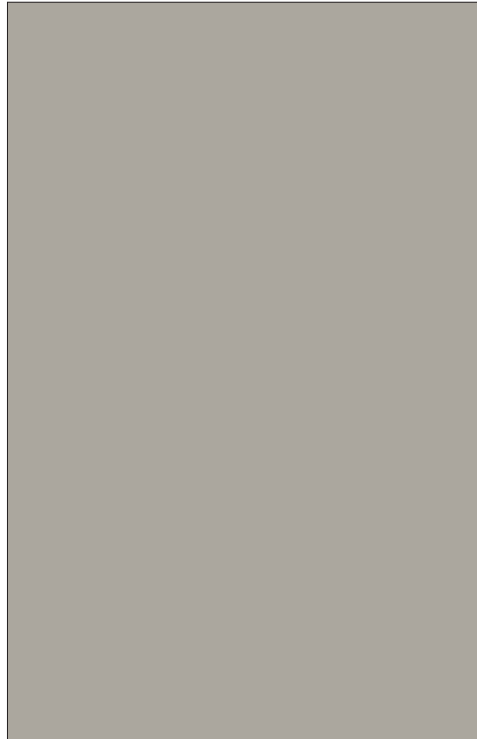




# BREAKOUT SPACES: HIGH SCHOOL MAKER/INNOVATION SPACES

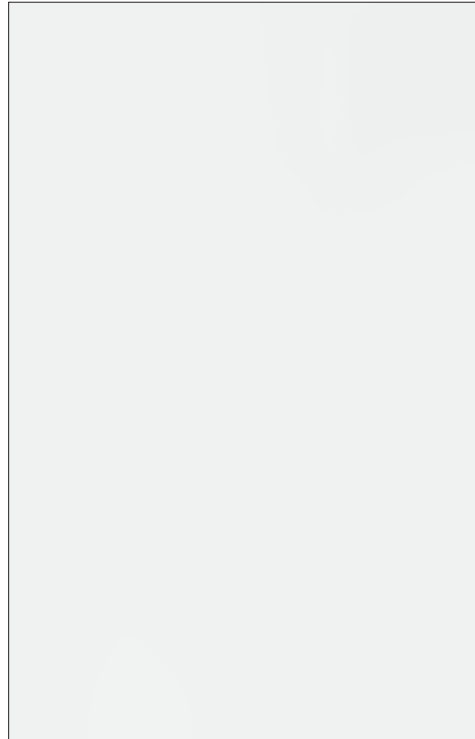


PT-2



PT-4

**MULTIPLE WALL/WALL FINISH**



CT-5A



CT-4 (ACCENT)

**WALL TILE FINISH**



RF-1



RF-2

**FLOOR FINISH**



WD-1

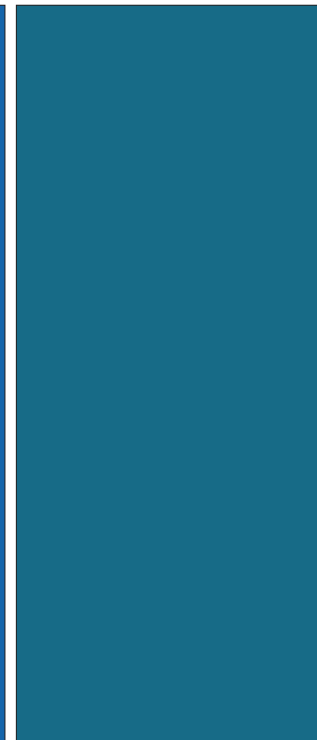


CORK TACKABLE PANEL

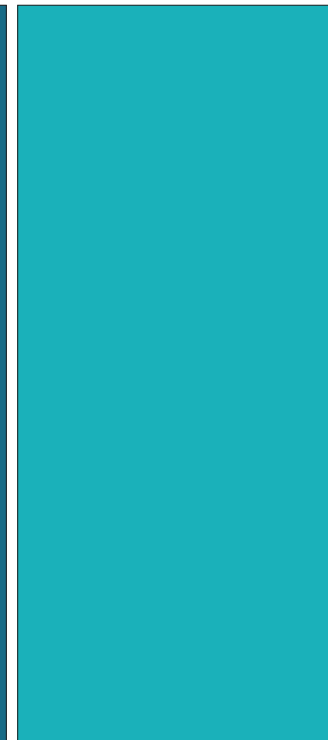
**CLASSROOM ENTRY BUMPOUT**



LEVEL 2 - PT-7



LEVEL 3 - PT-8



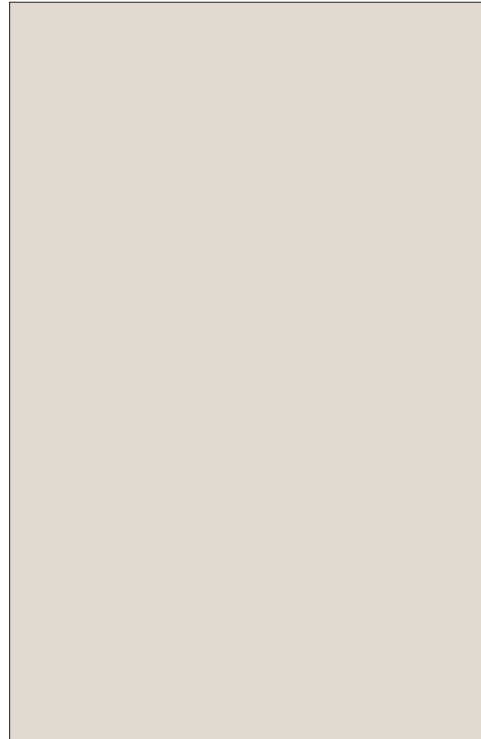
LEVEL 4 - PT-9

**MULTIPLE WALL/ACCENT FINISH**

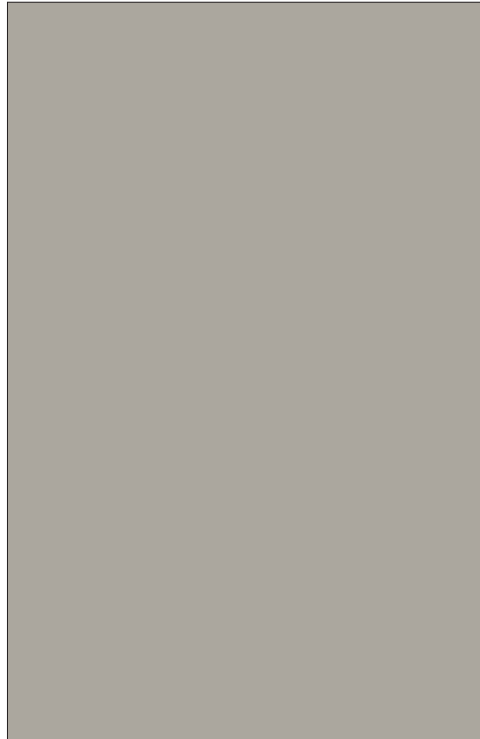
# RENDERING: MIDDLE SCHOOL CLASSROOM PODS



# **BREAKOUT SPACES:** MIDDLE SCHOOL CLASSROOM PODS

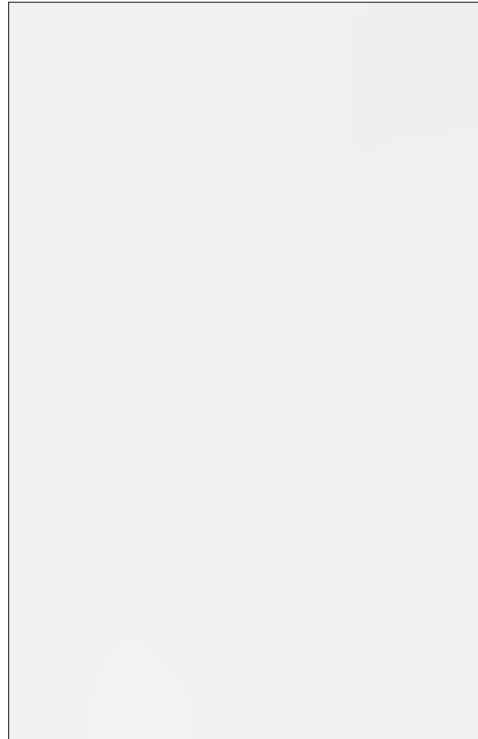


PT-2



PT-4

**MULTIPLE WALL/WALL FINISH**

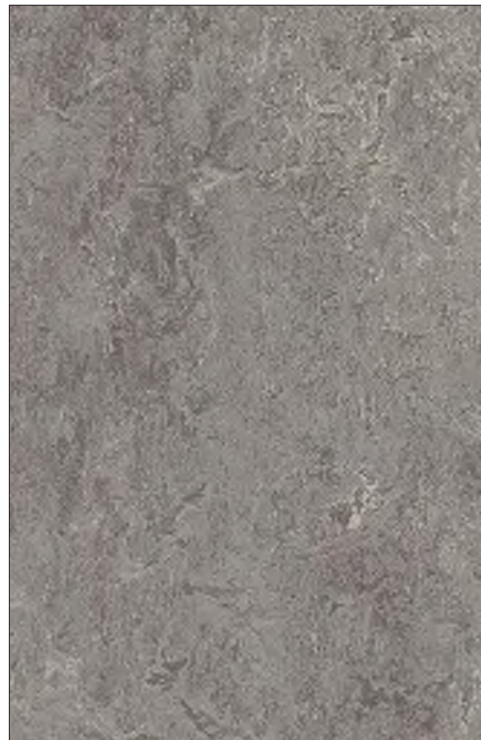


CT-5A



CT-4 (ACCENT)

**WALL TILE FINISH**



RF-1



RF-3

**FLOOR FINISH**



WD-1

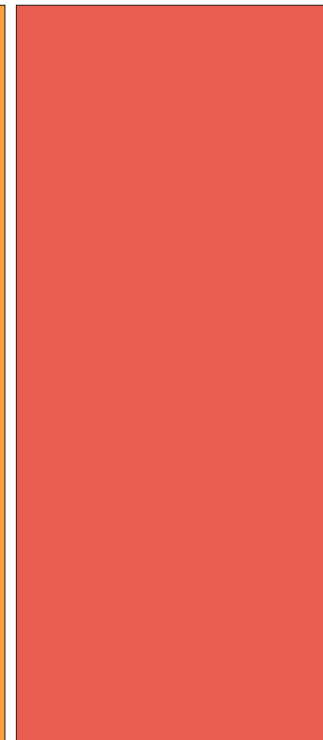


CORK TACKABLE PANEL

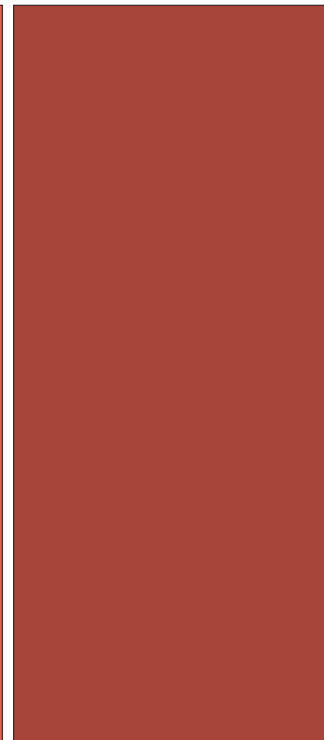
**CLASSROOM ENTRY BUMPOUT**



LEVEL 1 - PT-12



LEVEL 2 - PT-14



LEVEL 3 - PT-15

**MULTIPLE WALL/ACCENT FINISH**

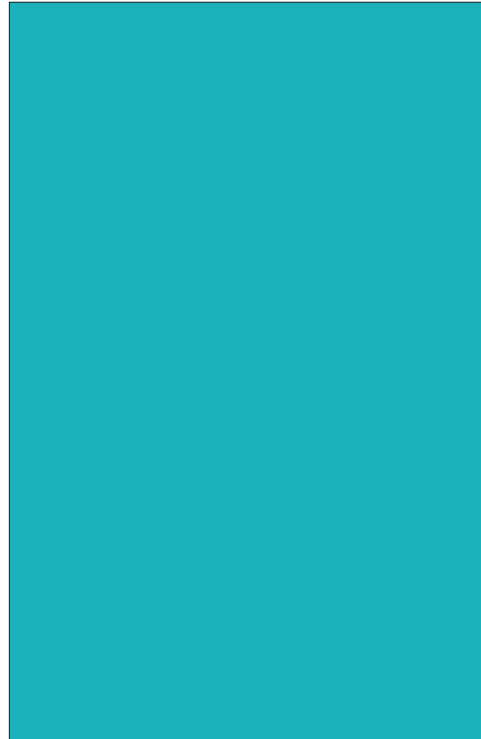
# **FINISHES AND MATERIALS:** MIDDLE SCHOOL CLASSROOM PODS



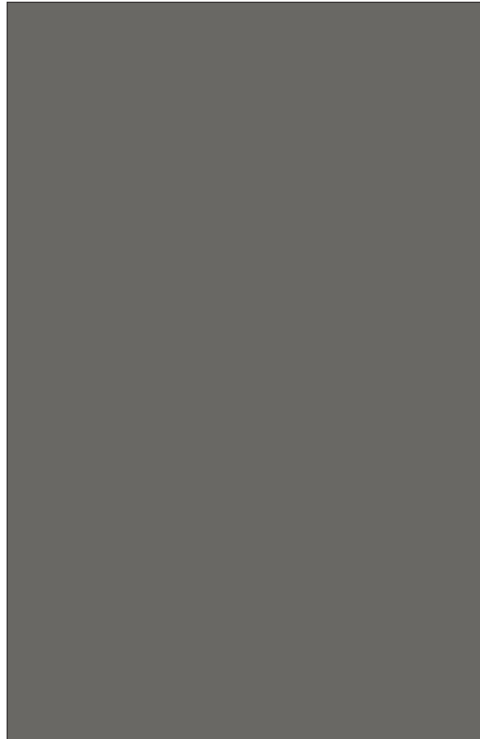
# RENDERING: HIGH SCHOOL MEDIA CENTER



# MEDIA CENTER: HIGH SCHOOL

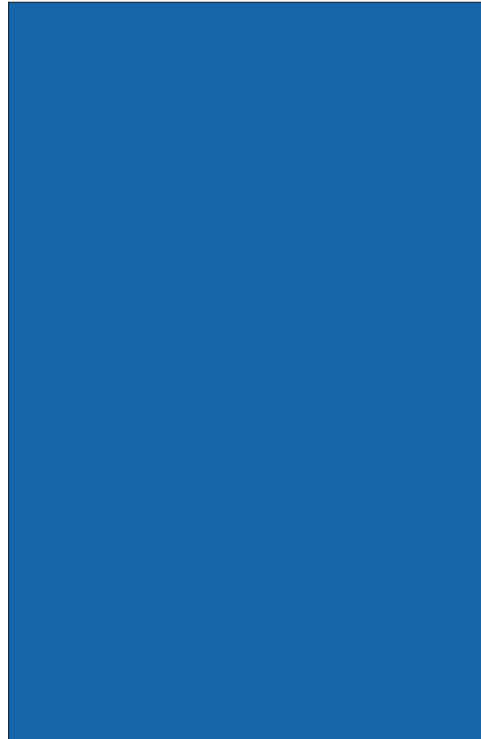


PT-9

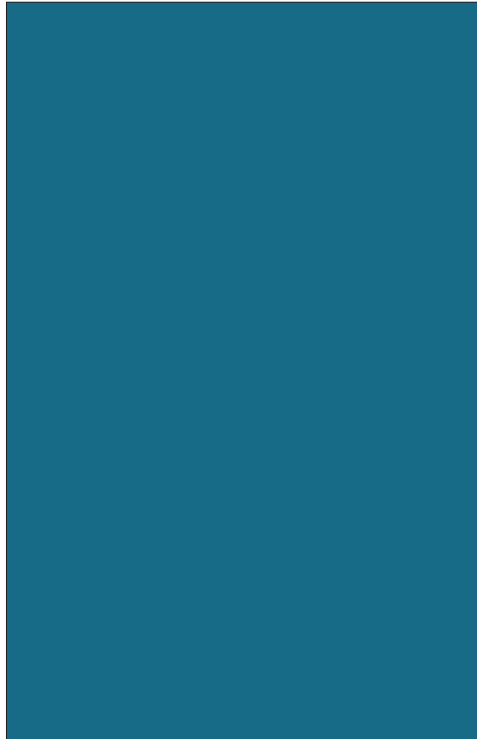


PT-3

**MULTIPLE WALL/WALL FINISH**



PT-7



PT-8

**PROJECT ROOM WALLS/WALL FINISH**



CPT-4



RF-1

**FLOOR FINISH**

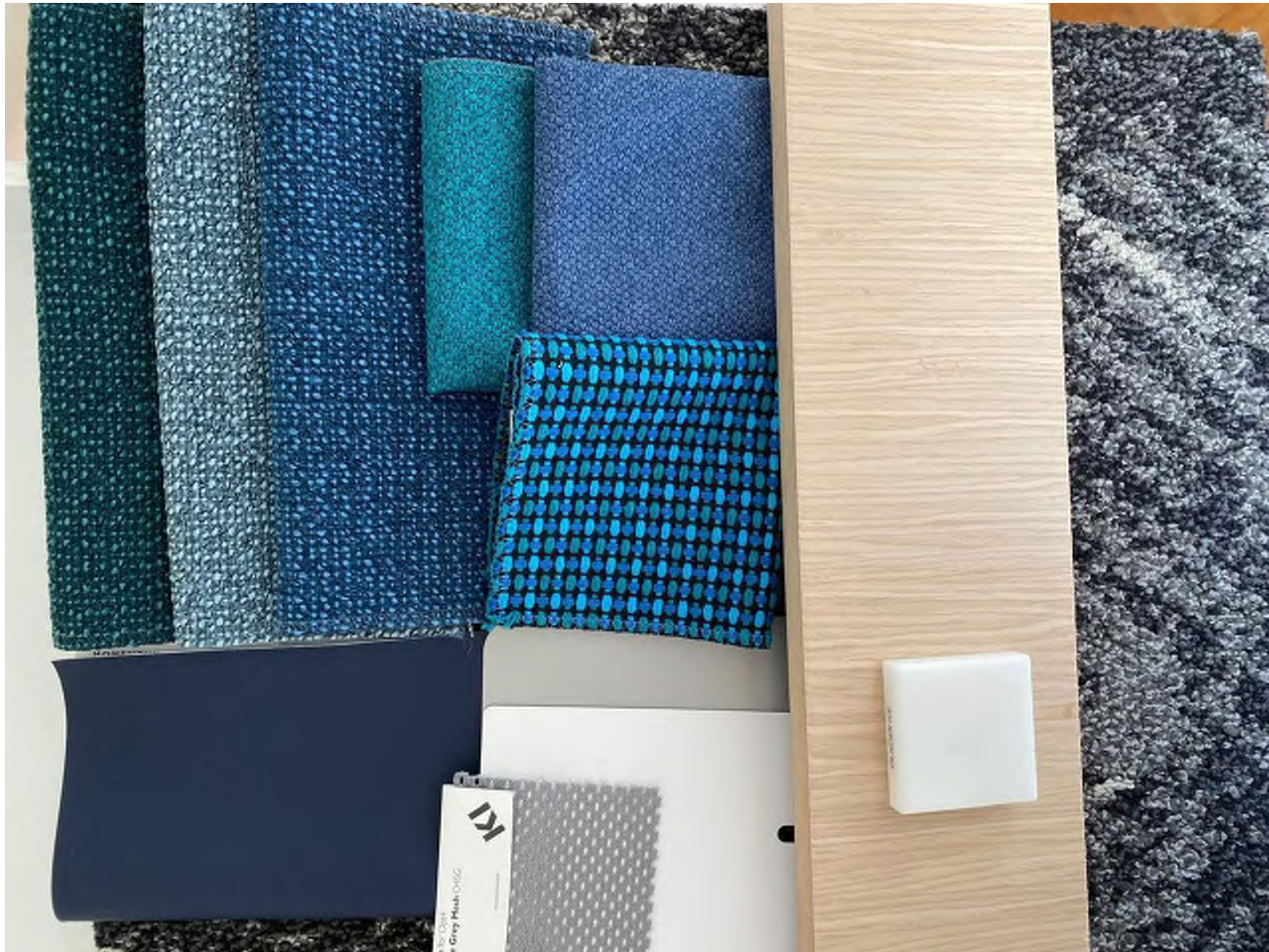


**CASEWORK**  
WD-1



**MULLION FINISH**  
PT-4

# FINISHES AND MATERIALS: HIGH SCHOOL MEDIA CENTER

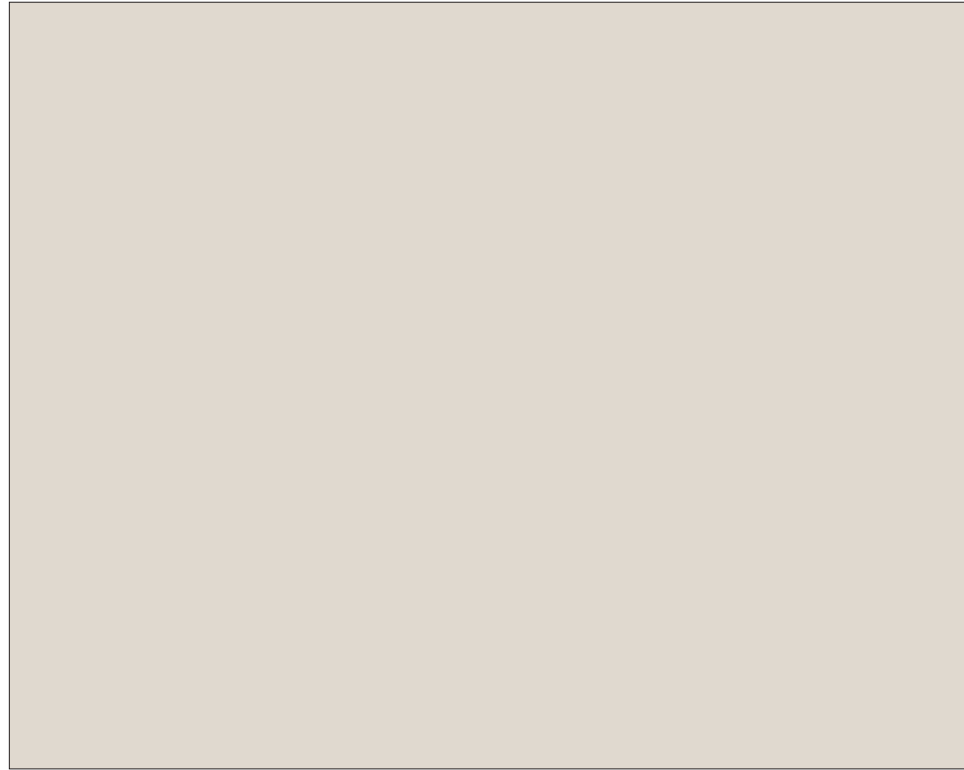


# RENDERING: MIDDLE SCHOOL MEDIA CENTER



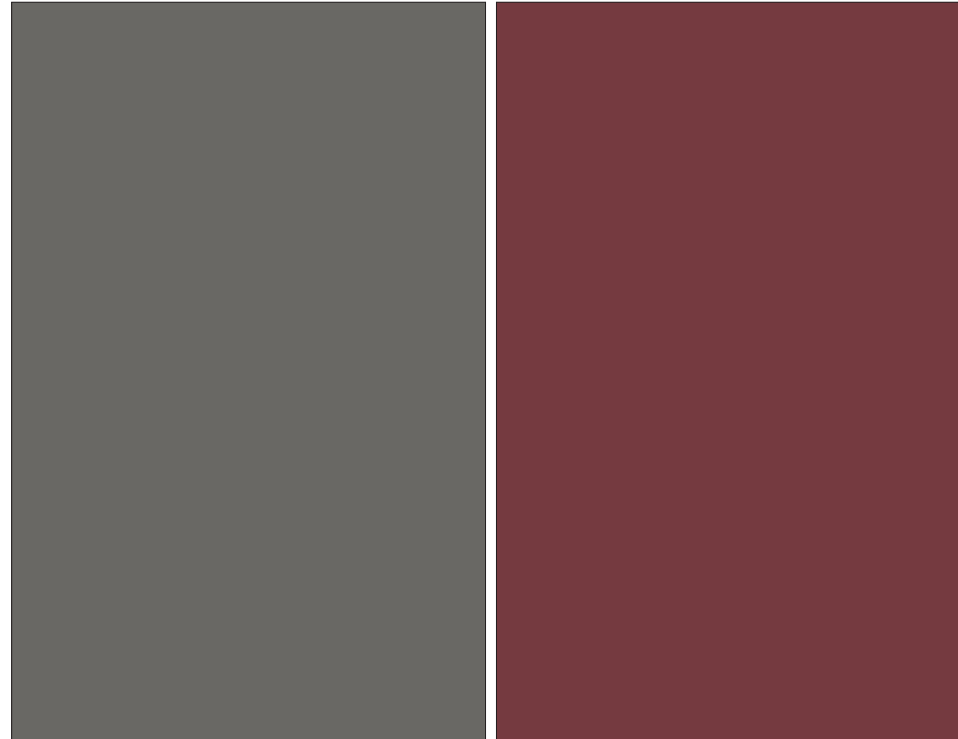


# MEDIA CENTER: MIDDLE SCHOOL



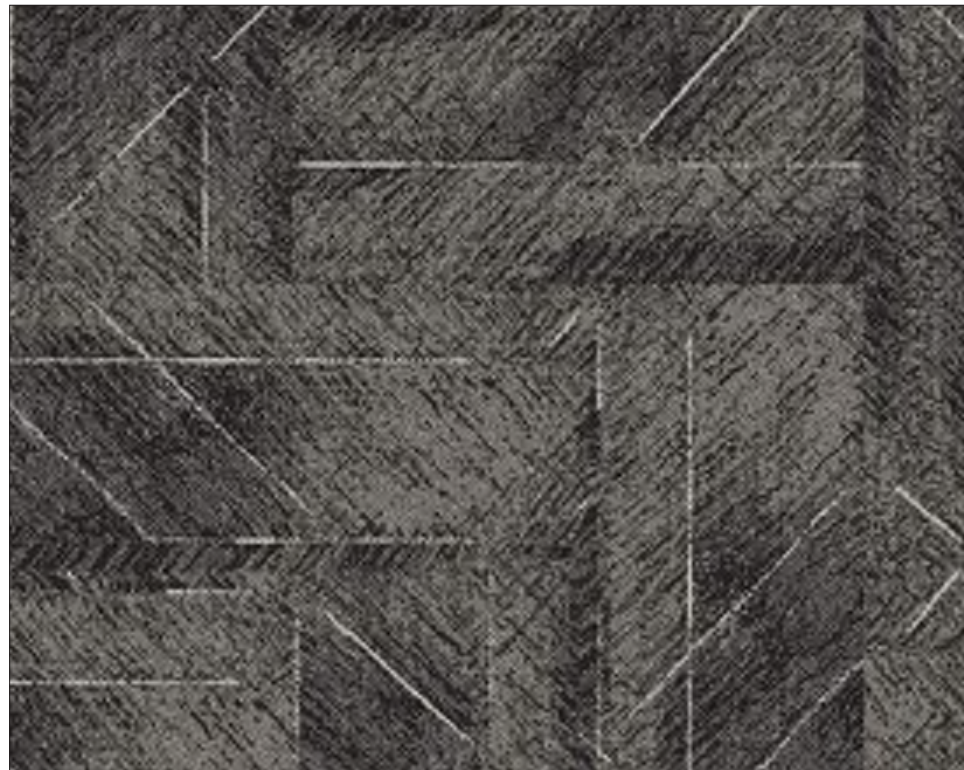
**WALL FINISH**

PT-2



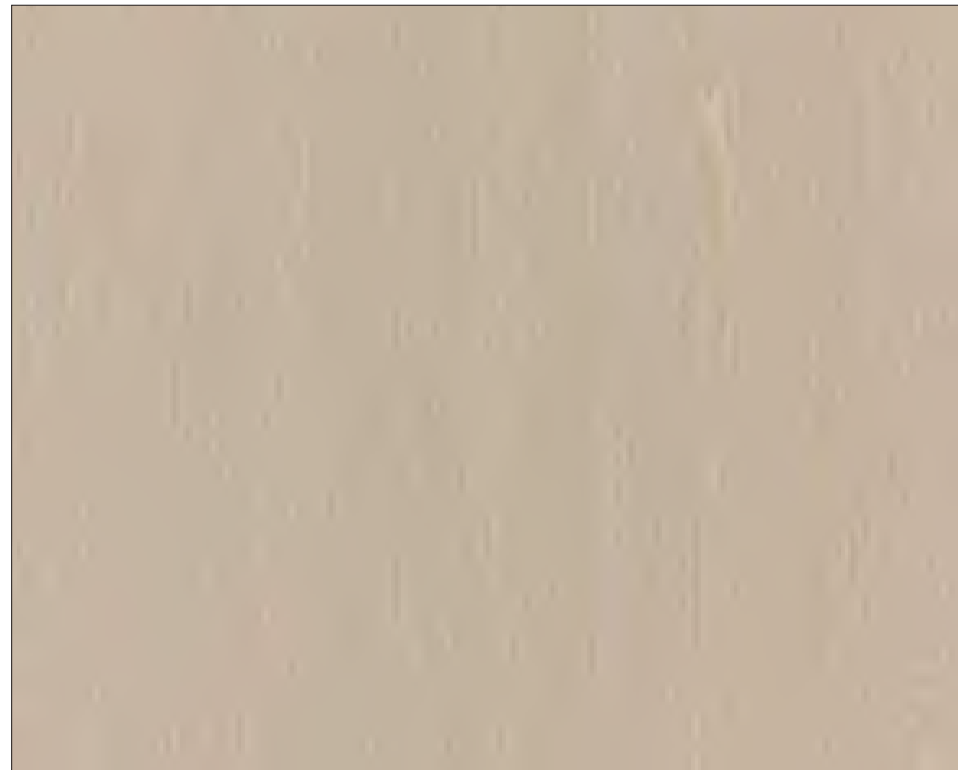
WALL GRAPHIC TO MATCH PT-3 PT-11

**ACCENT WALL FINISH**



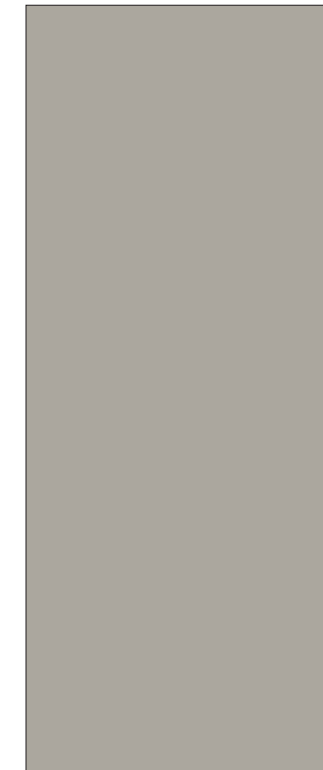
**FLOOR FINISH**

CPT-4



**CASEWORK**

WD-1



**MULLION FINISH**

PT-4

# FINISHES AND MATERIALS: MIDDLE SCHOOL MEDIA CENTER



# RENDERING: AUDITORIUM



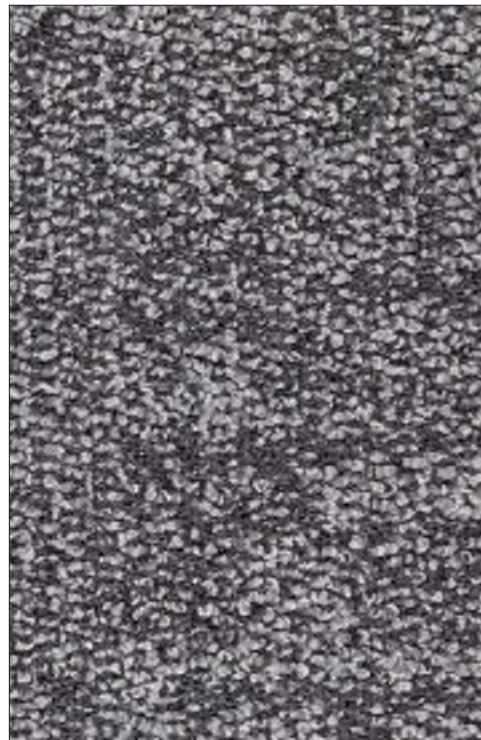
# AUDITORIUM



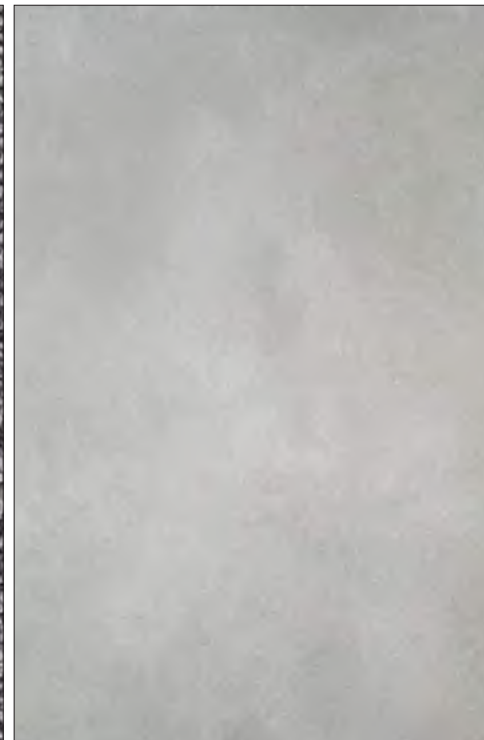
**WALL FINISH**  
PT-3



**WALL PANEL FINISH**  
WVP-2

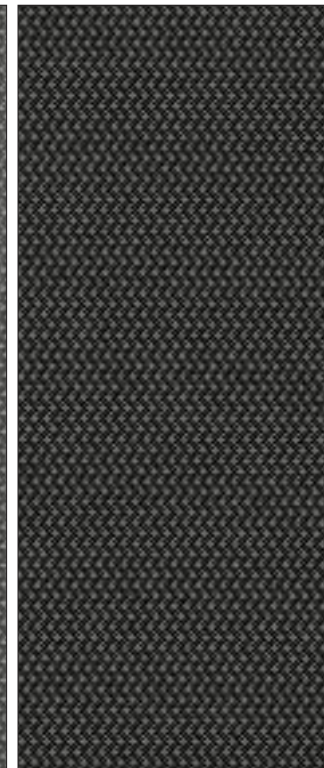
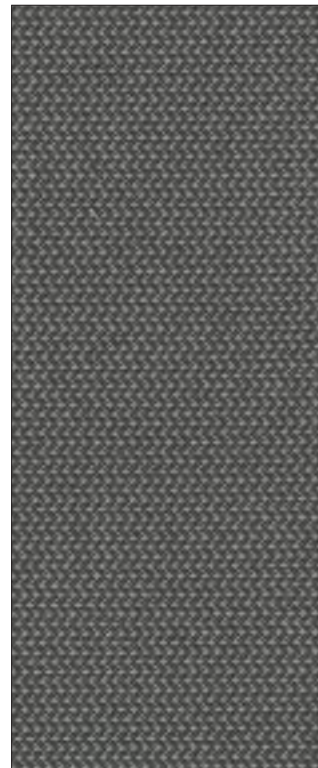


CPT-3



CF-2

**FLOOR FINISH**



**SEAT FABRIC FINISH**



**METAL MESH WALL PANEL**  
AWP-14

# RENDERING: DINING

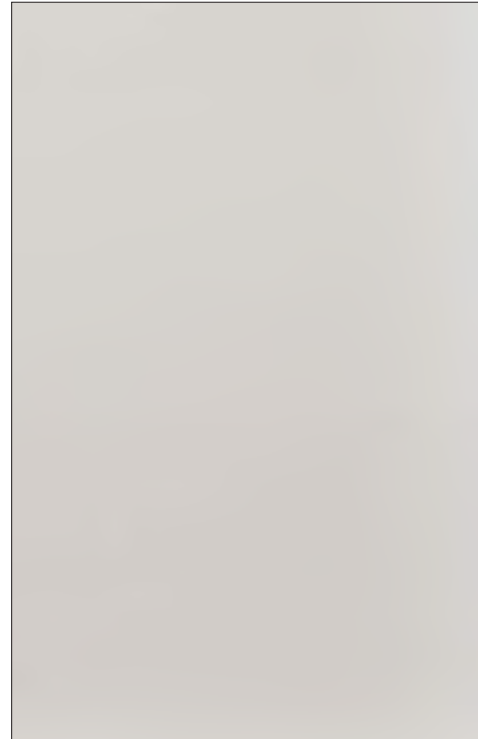


# DINING

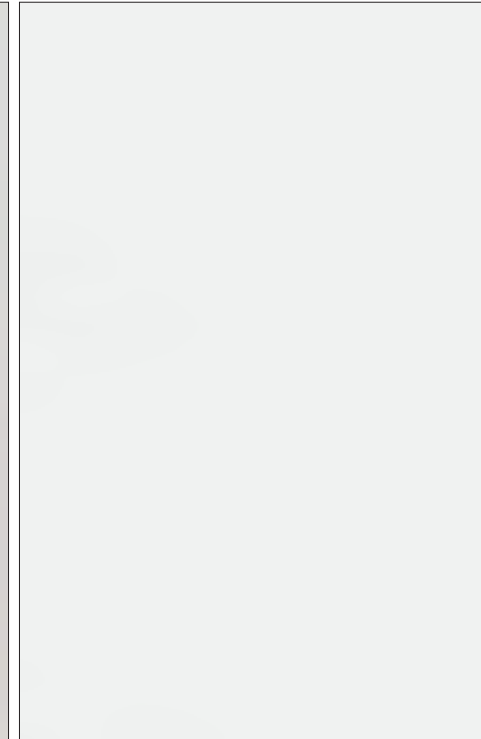


**WALL FINISH**

PT-1



HS DINING - CT-13C, CT-14A



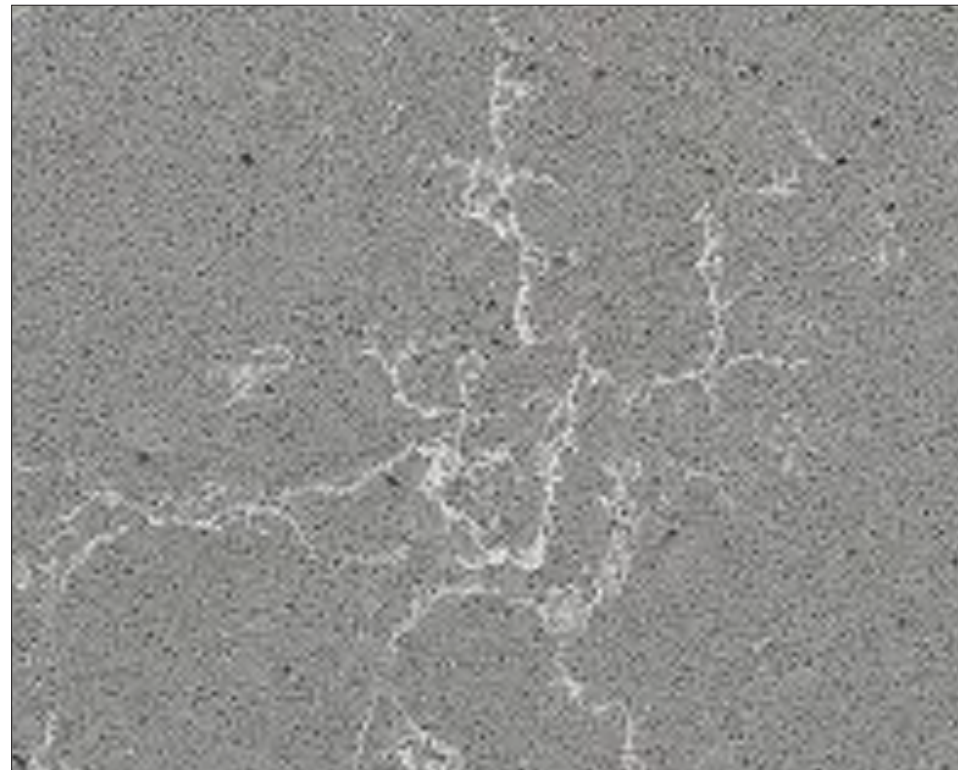
MS DINING - CT-8A

**WALL TILE FINISH**



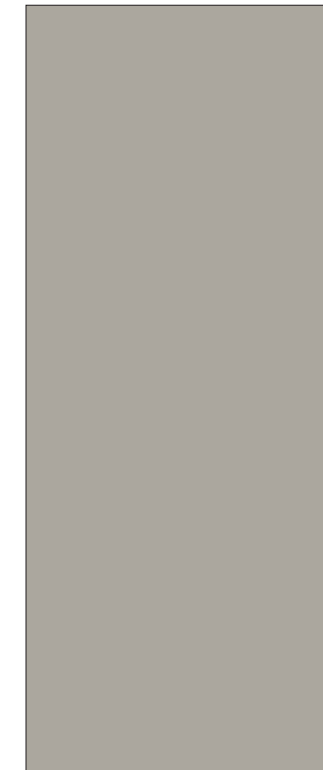
**FLOOR FINISH**

CT-1, CT-2



**QUARTZ AGGLOMERATE COUNTERTOP**

ST-1



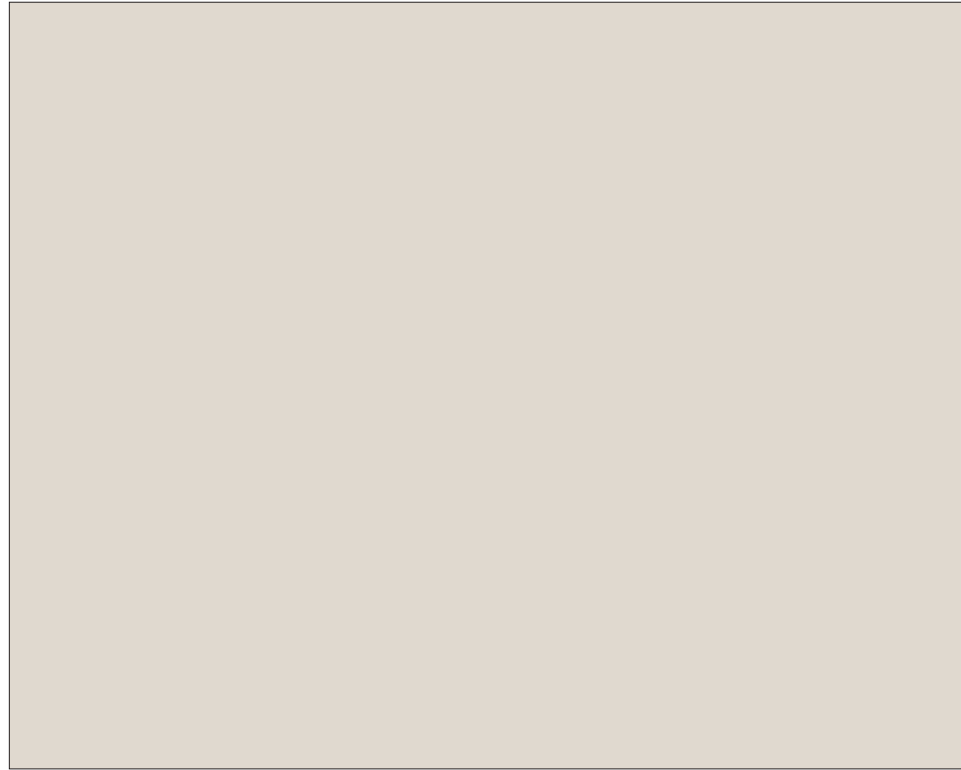
**MULLION FINISH**

PT-4

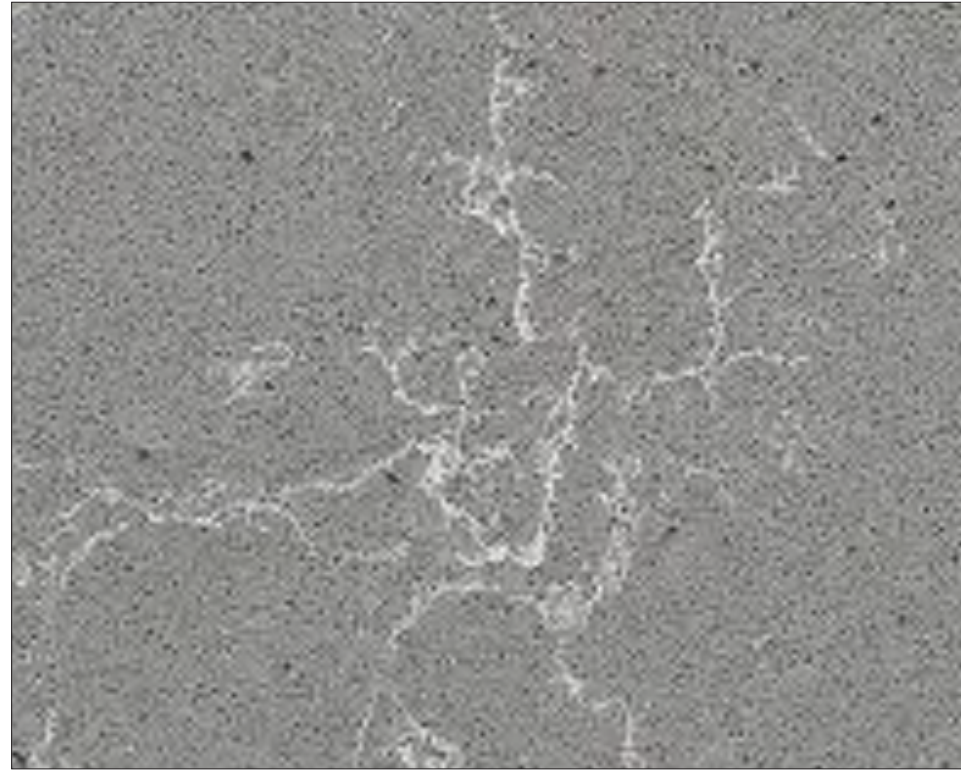


**WALL PANEL FINISH**

# STAFF LUNCH ROOM



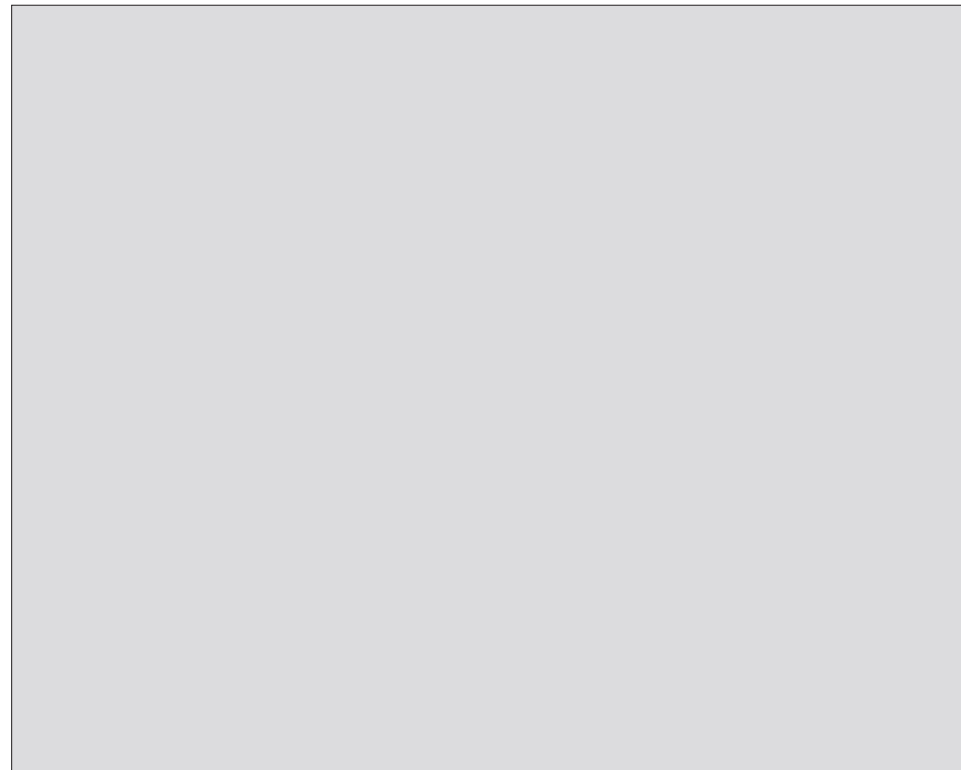
**WALL FINISH**  
PT-2



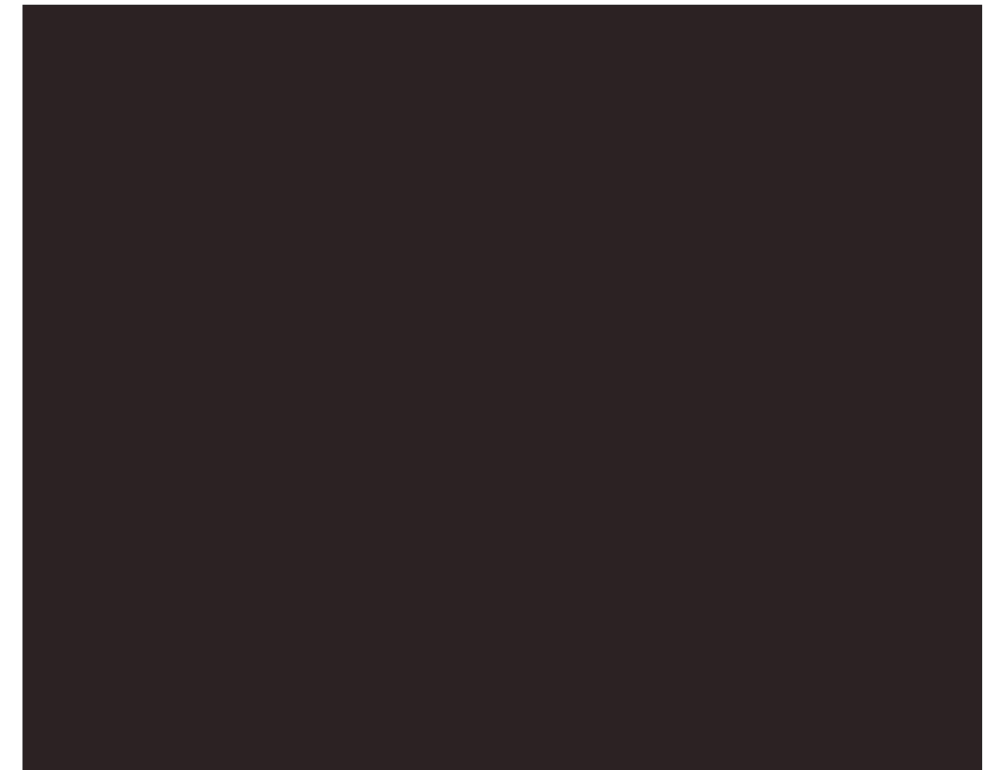
**QUARTZ AGGLOMERATE COUNTERTOP**  
ST-1



**FLOOR FINISH**  
RF-2

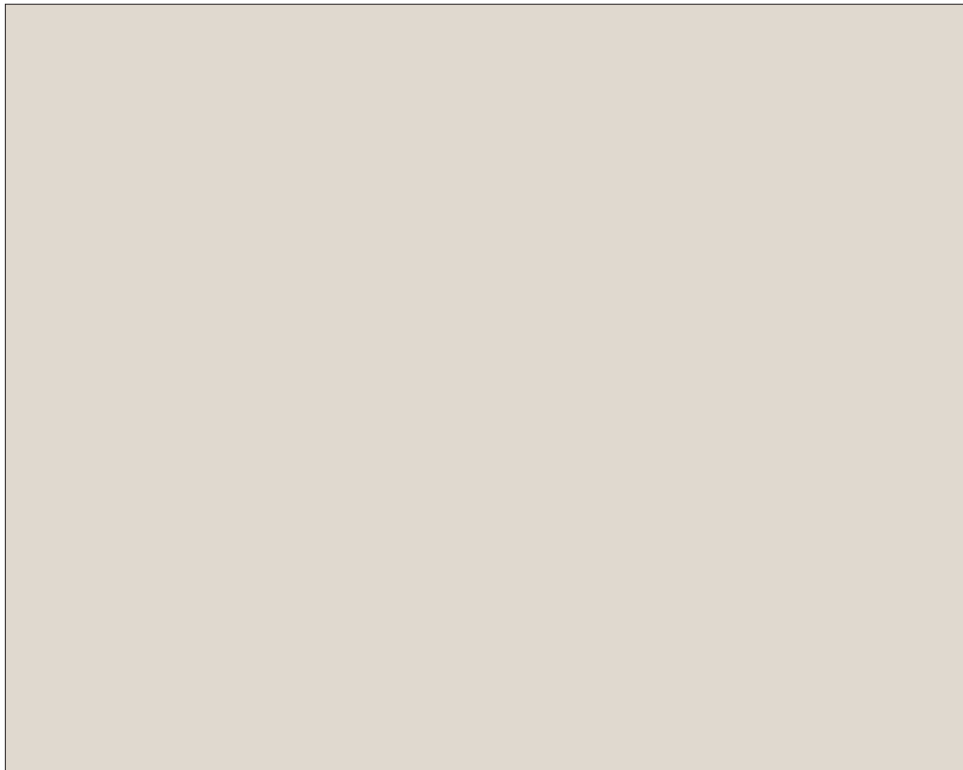


**CASEWORK**  
PL-16

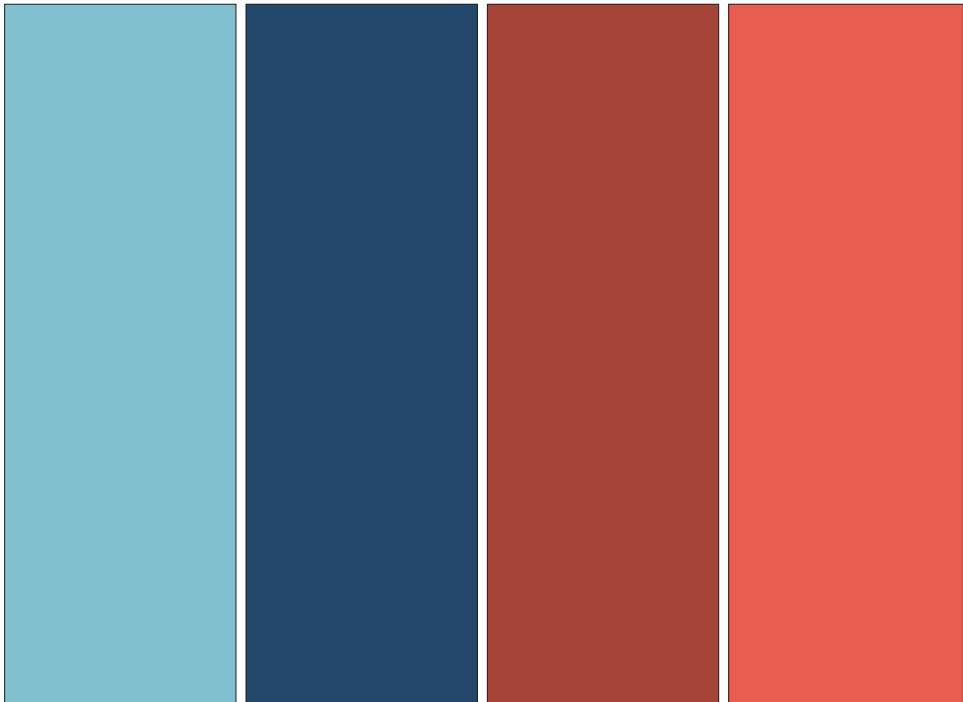


**BACKSPLASH TILE**  
CT-10

# ADMINISTRATION: HS/MS CONFERENCE ROOM



**WALL FINISH**  
PT-2



HS/MS ADMIN PT-10    MUSIC PT-6    MS MEDICAL PT-15    SPED PT-14

**MULTIPLE WALL/ACCENT FINISH**



**FLOOR FINISH**  
CPT-2

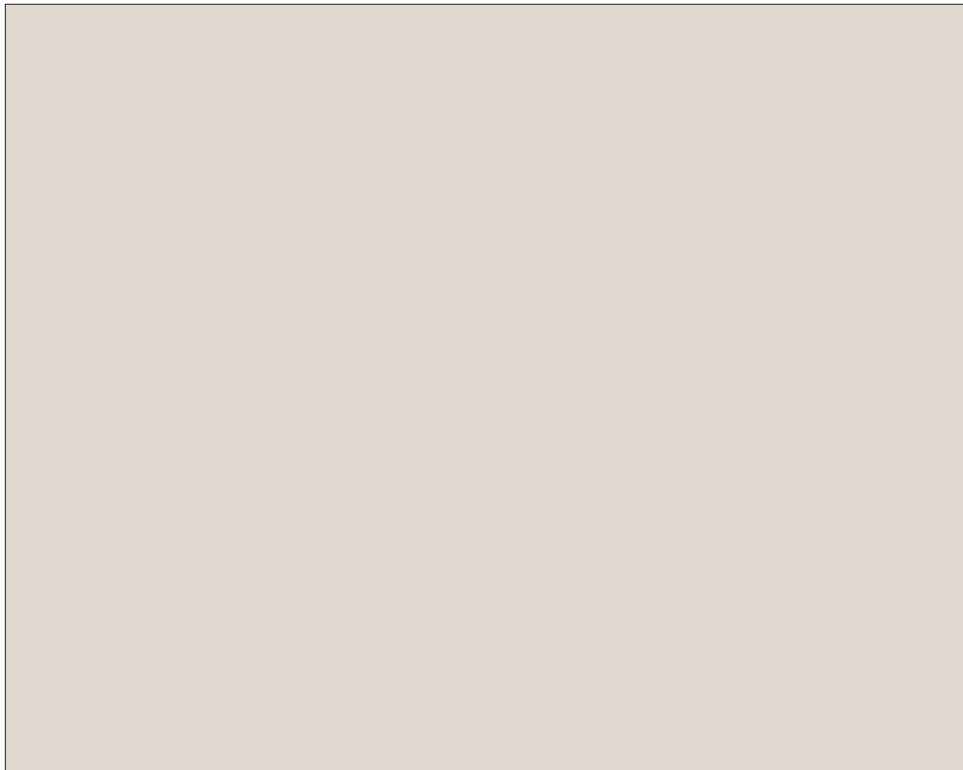


FRAME - PT-4    WD DOOR

**DOOR FINISH**



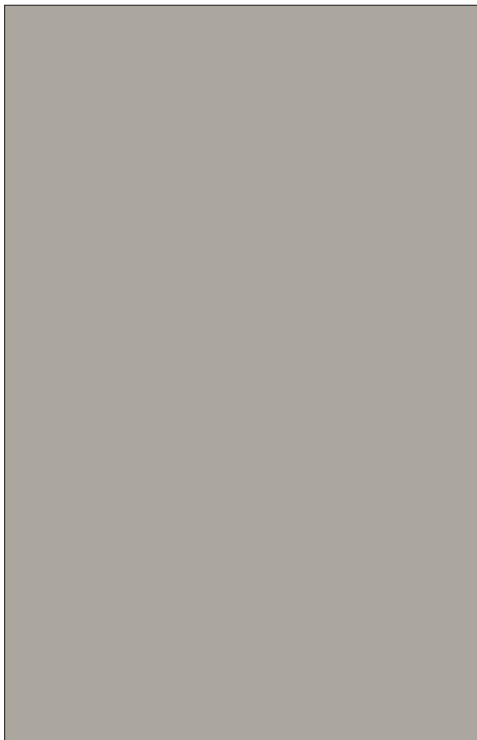
# ADMINISTRATION: TYPICAL OFFICE



**WALL FINISH**  
PT-2



**FLOOR FINISH**  
CPT-2



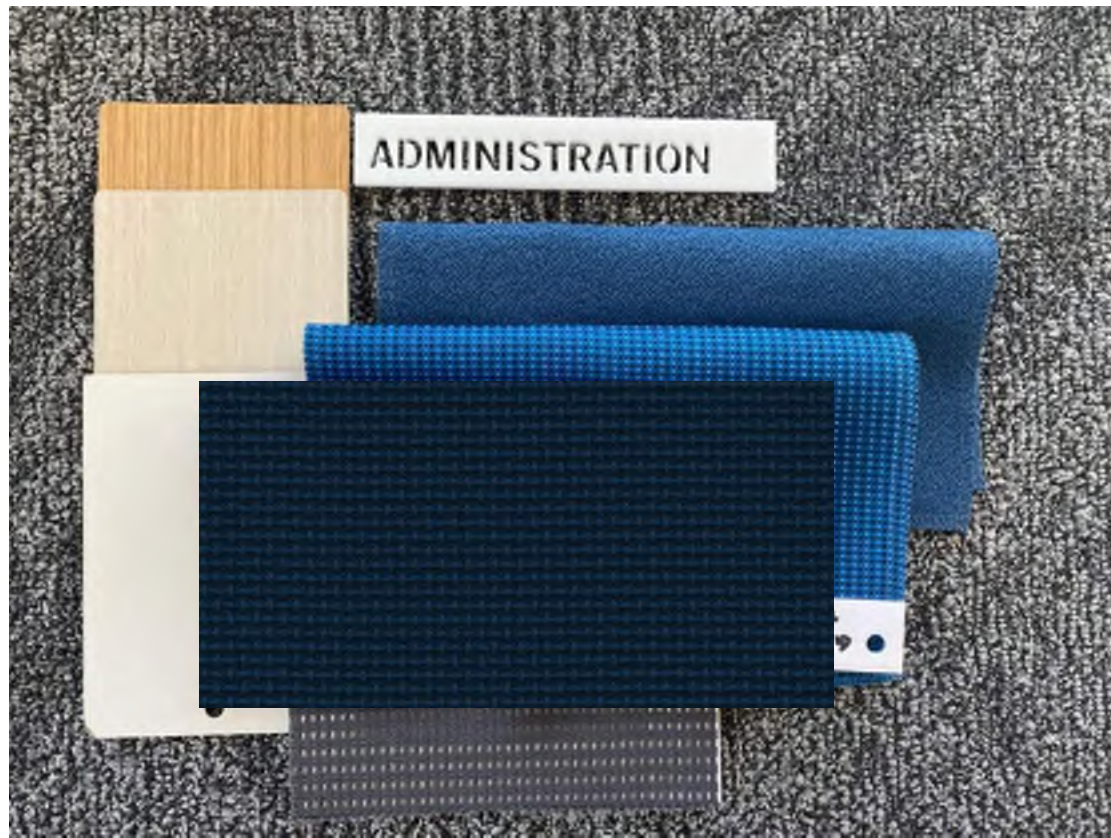
FRAME - PT-4



WD DOOR

**DOOR FINISH**

# FINISHES AND MATERIALS: ADMINISTRATION



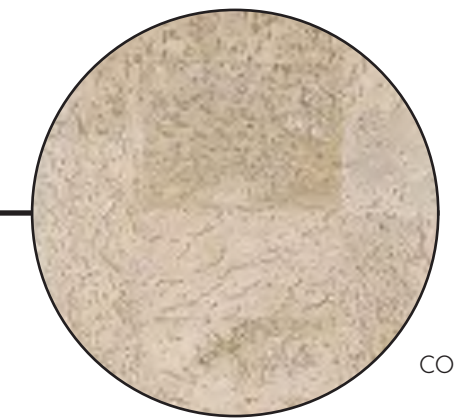
# FINISH BOXES: PHOTO REFERENCES OF FINISH BOXES LIVE AT THE CONFERENCE TRAILER



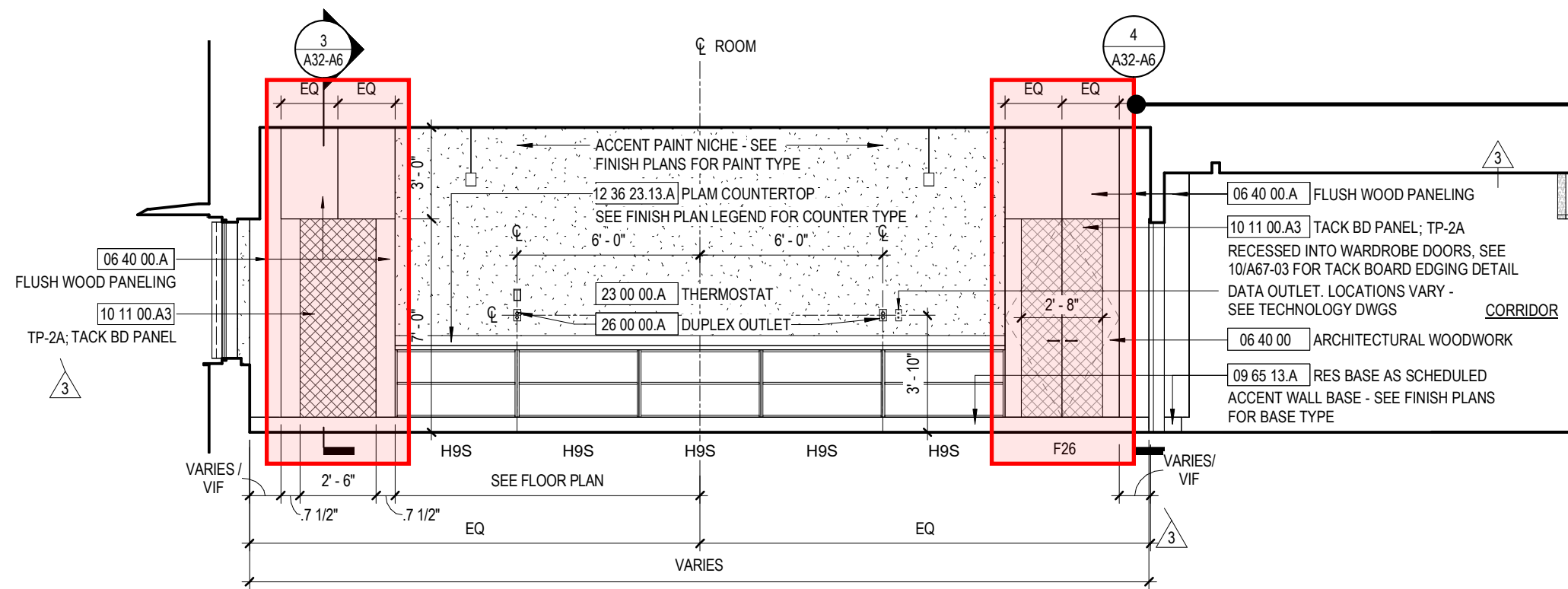
# TACKBOARD : TYPICAL CLASSROOM CASEWORK WALL



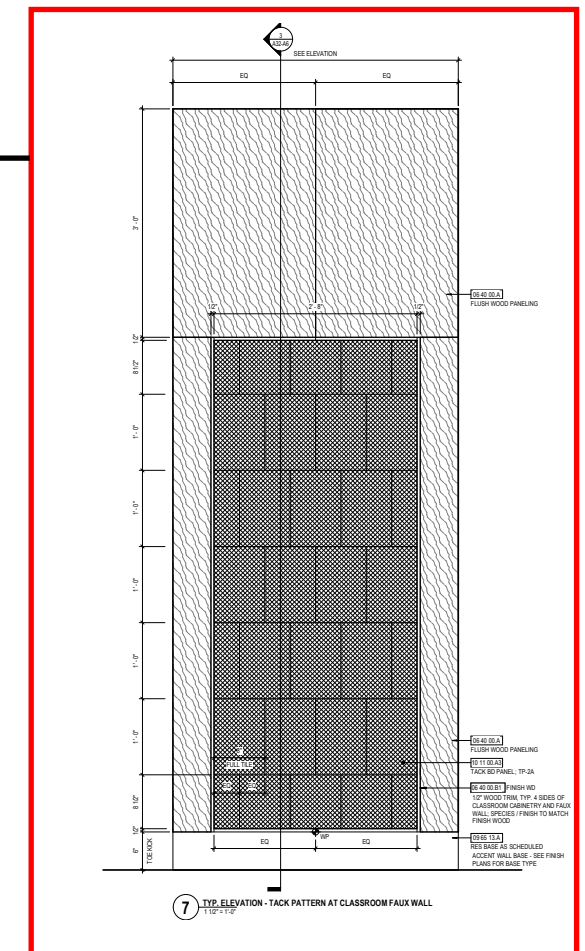
WD-1 MILLWORK



CORCK BRICK



**3** TYPICAL CLASSROOM - CASEWORK WALL  
1/4" = 1'-0"

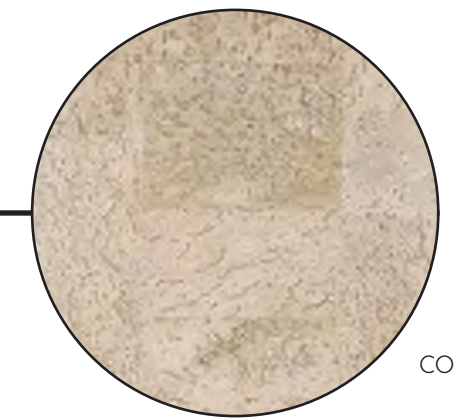


**7** TYP. ELEVATION - TACK PATTERN AT CLASSROOM FAUX WALL  
1/4" = 1'-0"

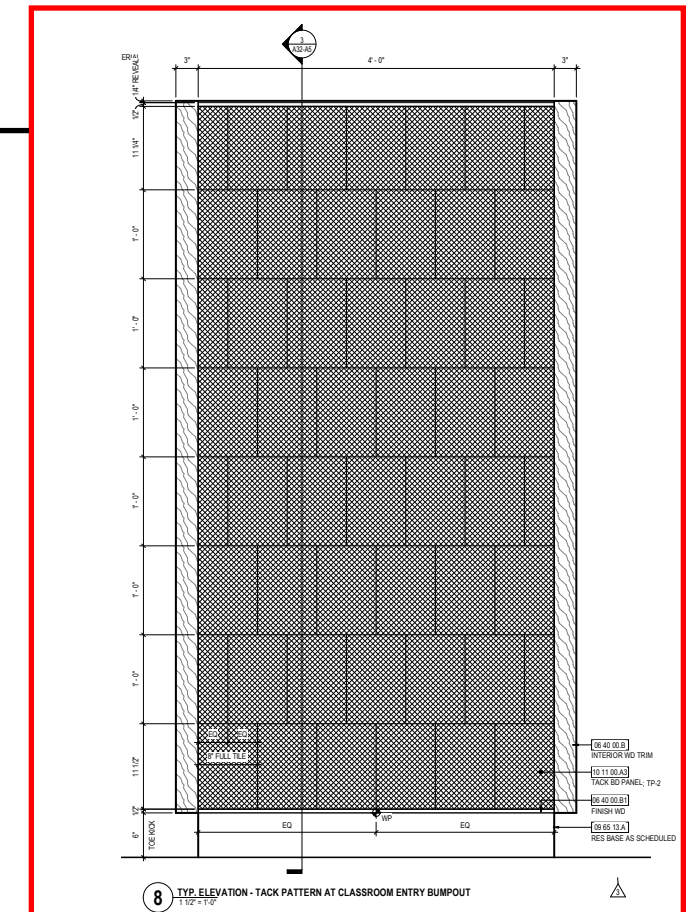
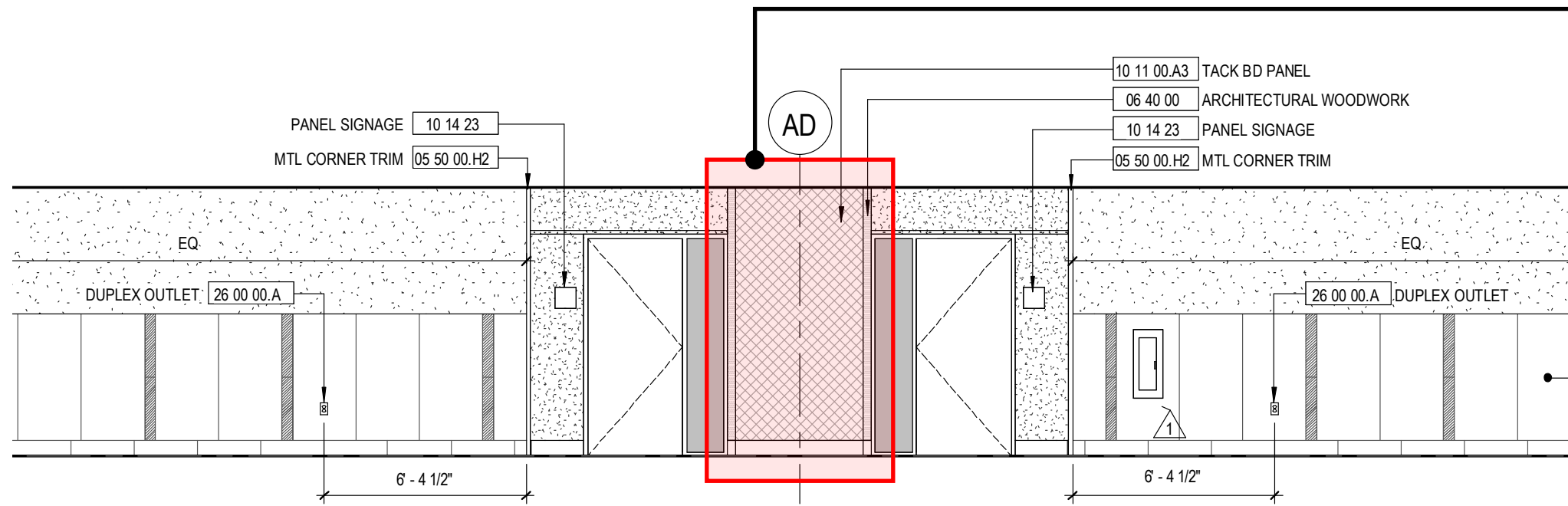
# TACKBOARD : TYPICAL CLASSROOM ENTRY BUMPOUT



WD-1 MILLWORK



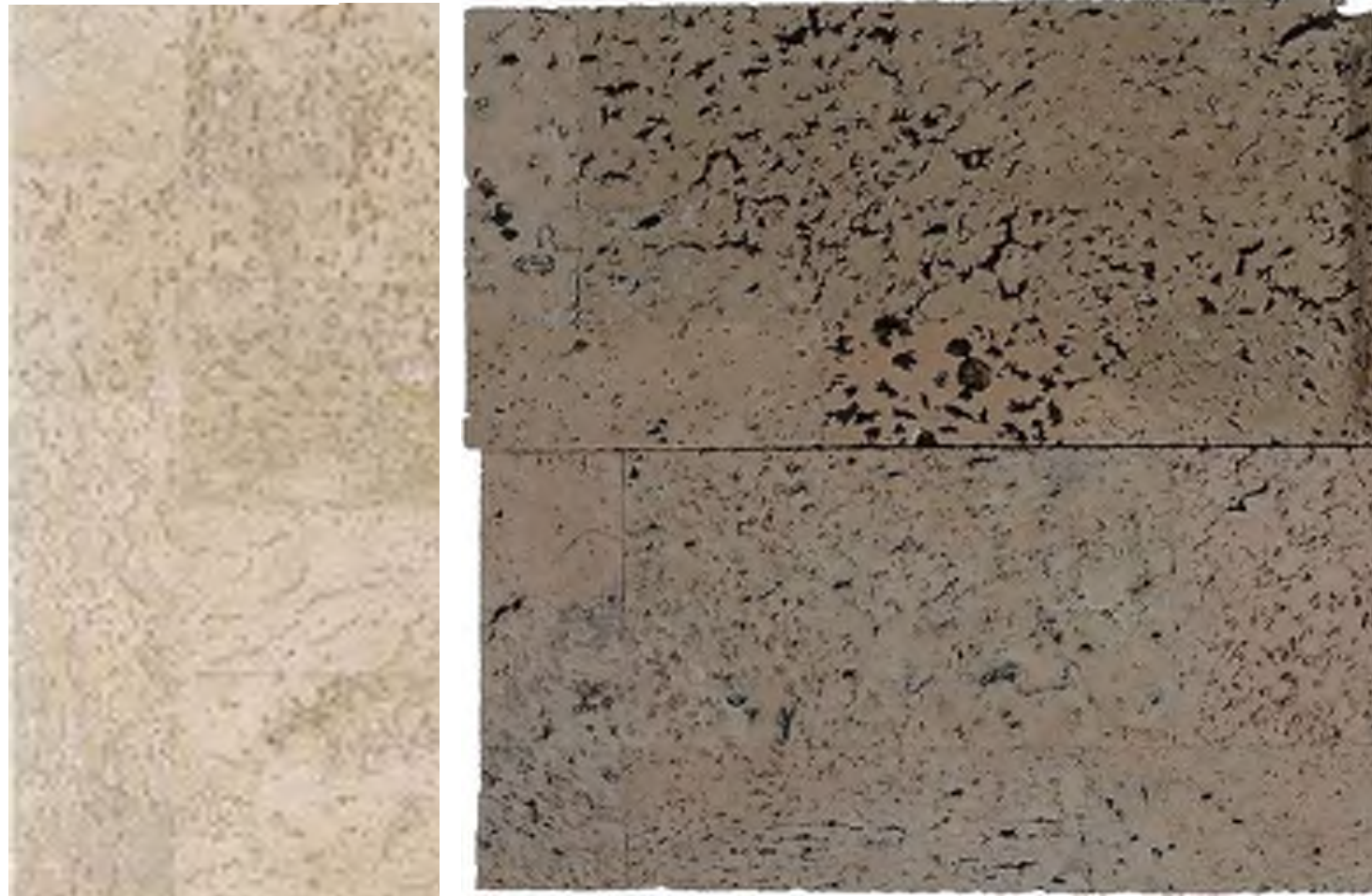
CORCK BRICK



8 TYP. ELEVATION - TACK PATTERN AT CLASSROOM ENTRY BUMPOUT  
1/12" = 1'-0"

# TACKBOARD : MATERIALS

## CORK BRICKS



### **SUSTAINABLE MATERIALS GRAND CORK BRICKS:**

- CORK BRICKS IN MULTIPLE SIZES
- PROVIDES PATTERN POSSIBILITIES
- PROJECT SIZE: 8" x 12"
- THICKNESS: 1/4" - CLASSROOM CABINETS & FAUX WALL  
1/2" - CLASSROOM ENTRY BUMPOUT

## BULLETIN BOARD



### **FORBO PINBOARD LINOLEUM / BULLETIN BOARD:**

- TACKABLE SURFACE SHEET MATERIAL
- SUITABLE FOR LARGE INSTALLATION
- ROLL SIZE: 48" x 72"
- THICKNESS: 1/4"