

Belmont Middle & High School Project Update

June 2020

June 2020 Work Performed

- Continued Lateral Piping in Well Field #2 and Drilling in Geothermal Well-Field #3.
- Continued Placement of Concrete Slab on Deck in Building C.
- Completed Installation of Radiant Tubing within Concrete Slabs on Metal Deck for Phase 1.
- Completed Decking and Detailing Building C/D Structural Steel.
- Completed Under-slab Utility Installation in Building A and Continued in Buildings B & C/D.
- Continued Interior/Exterior Wall Layout and Top Track Installation Prior to Fireproofing.
- Started Exterior Framing in Buildings A & B.
- Started Sheathing in Building A.
- Completed Spray Fireproofing in Building A.
- Started Spray Fireproofing in Buildings B & C/D.
- Continued MEP/FP Coordination.
- Started to Install MEP and Fire Protection Piping, Conduit, and Ductwork.
- Started Renovation Work in the Field House/Small Gym, Including Floor Protection, Abatement, and Installation of MEPs.
- Continued Incorporating COVID-19 Provisions on Site for Safe Work Practices.



Photo 1 – Geothermal Well Drilling in Field #3.



Photo 2 – Geothermal Well Drilling in Field #3.



Photo 3 – Area C Radiant Piping Prior to Slab on Deck Placement.



Photo 4 – Slab on Deck Placement for Building C/D Level 2.

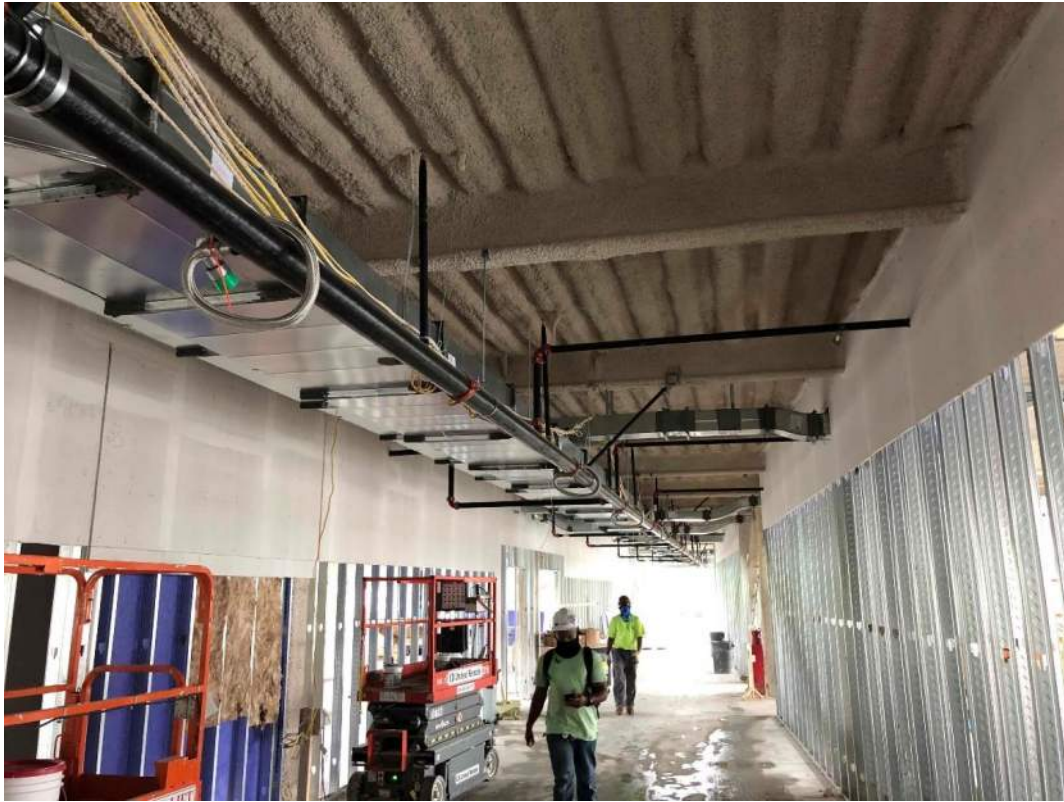


Photo 5 – Building A Corridor with MEP components, wall framing, and some sheathing installed.



Photo 6 – 1st-in-Place Inspection of Sheathing with Gary Hewitt (SKA) and Jeff Brussel (PW).



Photo 7 – Building A West Elevation Being Framed.



Photo 8 – Building A East Elevation External Sheathing.



Photo 9 – Floor Protected Field House with Chairs Located to Accommodate Socially Distanced Meetings.

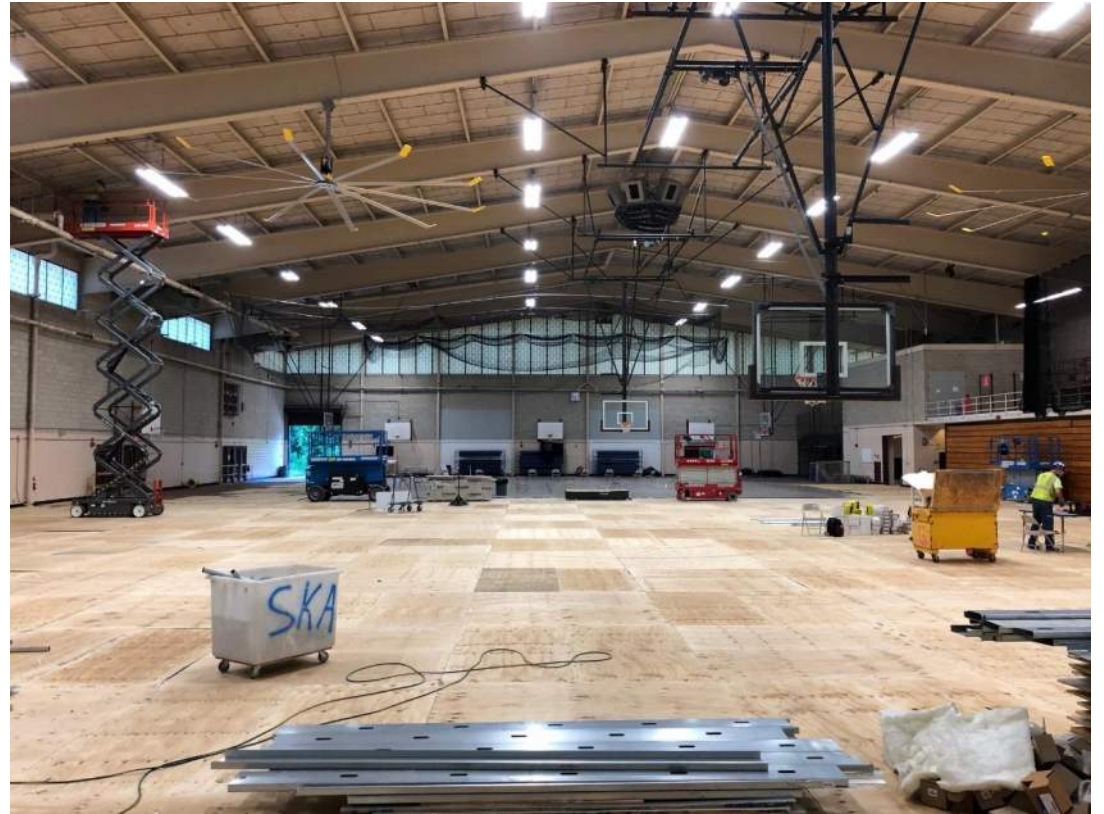


Photo 10 – Griffin Electric Working in Field House.

July 2020 Look-Ahead

- Complete Drilling Geothermal Wells in Field #3 and Continue Lateral Piping.
- Complete Concrete Slab on Metal Deck Placements in Building C.
- Continue Spray Fireproofing in Building C.
- Continue MEP/FP Coordination.
- Continue Installation of MEP/FP Components in Buildings A, B, and C.
- Continue Interior Wall Layout and Top Track Installation.
- Continue Exterior Wall Framing.
- Continue Sheathing.
- Continue Under-slab Utility Installation in Buildings B & C.
- Continue Building E Summer 2020 Renovation Activities.