

Belmont Middle and High School FF&E

FURNITURE SELECTIONS BY DEPARTMENT

DECEMBER 18, 2020

NOTE

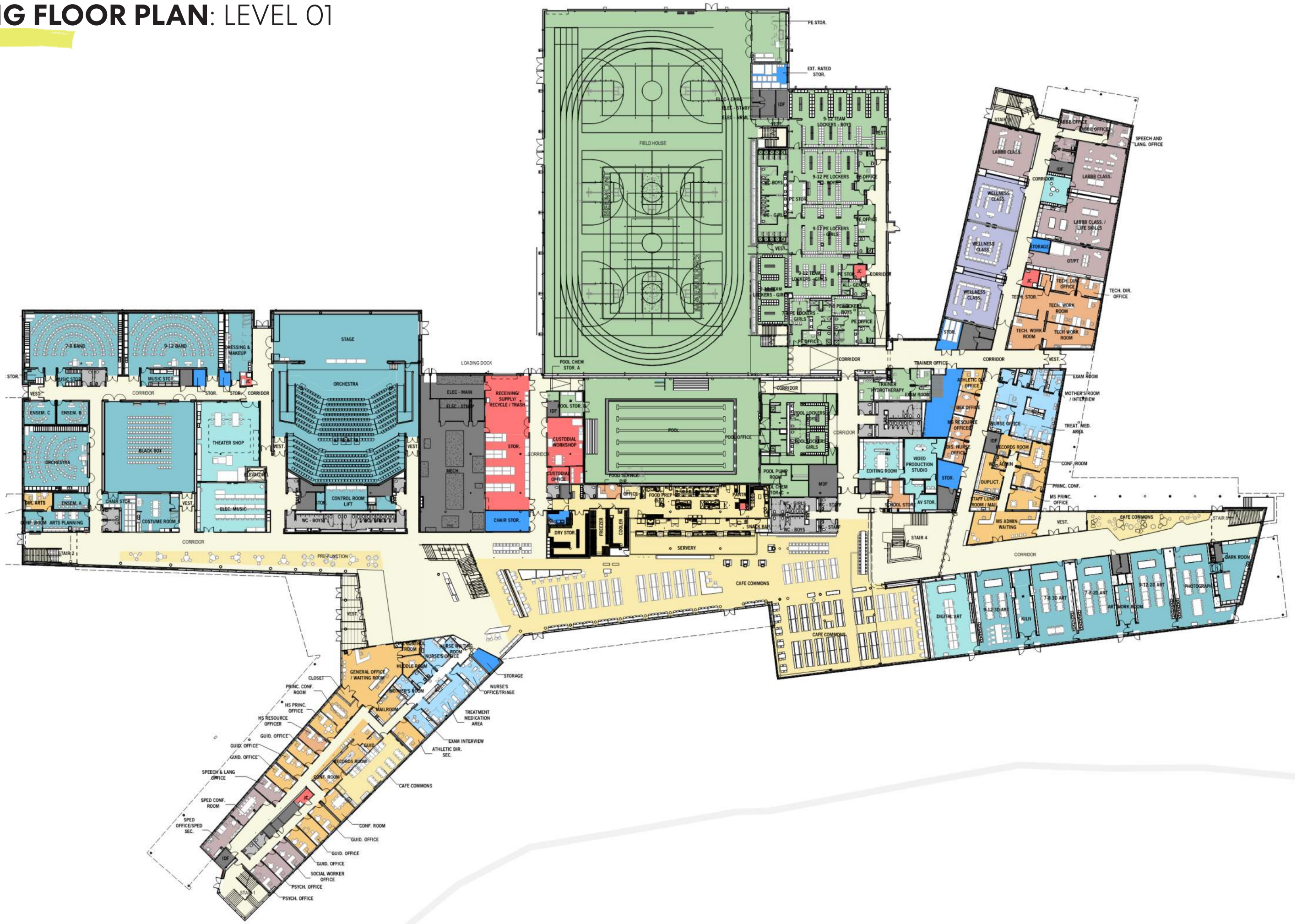
- All furniture images shown are supplemental references to the most recent FF&E budget.
- Some furniture options are in the process of final selections pending ongoing coordination in final decision making.
- All furniture finishes (colors, materials, etc.) as shown are for representational purposes only. Final finishes selection pending future dates.

- All items outlined in red are intended to be present at the upcoming mini furniture fair for further user-testing and feedback.

BUILDING FLOOR PLAN: LEVEL 01

BELMONT SCHOOL LEGEND

- ADMINISTRATION & GUIDANCE
- ART & MUSIC
- AUDITORIUM & DRAMA
- CIRCULATION
- CLOSETS
- CORE ACADEMIC
- CUSTODIAL & MAINTENANCE
- DINING & FOOD SERVICE
- DISTRICT OFFICES
- EXIST. CIRCULATION
- HEALTH & PHYSICAL EDUCATION
- LEARNING AMMENITY
- MEDIA CENTER
- MEDICAL
- MEPPF
- OPEN MEDIA
- OTHER
- OTHER - DISTRICT OFFICES
- PRE-K
- SERVICE
- SPECIAL EDUCATION
- TOILET ROOMS
- VOCATIONS & TECHNOLOGY



BUILDING FLOOR PLAN: LEVEL 02

BELMONT SCHOOL LEGEND

- ADMINISTRATION & GUIDANCE
- ART & MUSIC
- AUDITORIUM & DRAMA
- CIRCULATION
- CLOSETS
- CORE ACADEMIC
- CUSTODIAL & MAINTENANCE
- DINING & FOOD SERVICE
- DISTRICT OFFICES
- EXIST. CIRCULATION
- HEALTH & PHYSICAL EDUCATION
- LEARNING AMMENITY
- MEDIA CENTER
- MEDICAL
- MEPPF
- OPEN MEDIA
- OTHER
- OTHER - DISTRICT OFFICES
- PRE-K
- SERVICE
- SPECIAL EDUCATION
- TOILET ROOMS
- VOCATIONS & TECHNOLOGY



BUILDING FLOOR PLAN: LEVEL 03

BELMONT SCHOOL LEGEND

- ADMINISTRATION & GUIDANCE
- ART & MUSIC
- AUDITORIUM & DRAMA
- CIRCULATION
- CLOSETS
- CORE ACADEMIC
- CUSTODIAL & MAINTENANCE
- DINING & FOOD SERVICE
- DISTRICT OFFICES
- EXIST. CIRCULATION
- HEALTH & PHYSICAL EDUCATION
- LEARNING AMMENITY
- MEDIA CENTER
- MEDICAL
- MEPPF
- OPEN MEDIA
- OTHER
- OTHER - DISTRICT OFFICES
- PRE-K
- SERVICE
- SPECIAL EDUCATION
- TOILET ROOMS
- VOCATIONS & TECHNOLOGY



BUILDING FLOOR PLAN: LEVEL 04

BELMONT SCHOOL LEGEND

- ADMINISTRATION & GUIDANCE
- ART & MUSIC
- AUDITORIUM & DRAMA
- CIRCULATION
- CLOSETS
- CORE ACADEMIC
- CUSTODIAL & MAINTENANCE
- DINING & FOOD SERVICE
- DISTRICT OFFICES
- EXIST. CIRCULATION
- HEALTH & PHYSICAL EDUCATION
- LEARNING AMMENITY
- MEDIA CENTER
- MEDICAL
- MEPPF
- OPEN MEDIA
- OTHER
- OTHER - DISTRICT OFFICES
- PRE-K
- SERVICE
- SPECIAL EDUCATION
- TOILET ROOMS
- VOCATIONS & TECHNOLOGY



CORE ACADEMIC: MIDDLE SCHOOL TEACHER FURNITURE

D.01



teacher desk
30"x60"
note: to contain one storage ped

ST.08



teacher podium
adjustable height
28"-42" tall
22"x26" surface

C.01



teacher chair

CORE ACADEMIC: MS STUDENT DESK & CHAIR

D.02



student desk
fixed height
hard plastic top
(4) intended per each classroom

D.02A



student desk
adjustable height
hard plastic top

D.03



ADA student desk
20"x60"
hard plastic top
*note: image shown is representational of design
aesthetic only, where actual ADA desk size is 20"x60"*

C.02



student chair
note: final option pending

C.02



student chair
note: final option pending

CORE ACADEMIC: HIGH SCHOOL TEACHER FURNITURE

D.01



teacher desk
30"x60"
note: to contain two storage peds

ST.08



teacher podium
adjustable height
28"-42" tall
22"x26" surface

C.01



teacher chair

CORE ACADEMIC: HS STUDENT DESK & CHAIR

D.02



student desk
fixed height
hard plastic top

D.02A



student desk
adjustable height
hard plastic top

D.03



ADA student desk
20"x60"
hard plastic top
*note: image shown is representational of design
aesthetic only, where actual ADA desk size is 20"x60"*

C.02



student chair
note: final option pending

C.02



student chair
note: final option pending

CORE ACADEMIC: HIGH SCHOOL TEACHER PLANNING

T.31/T.31A



teacher planning table
note: sizes vary depending on room

ST.09

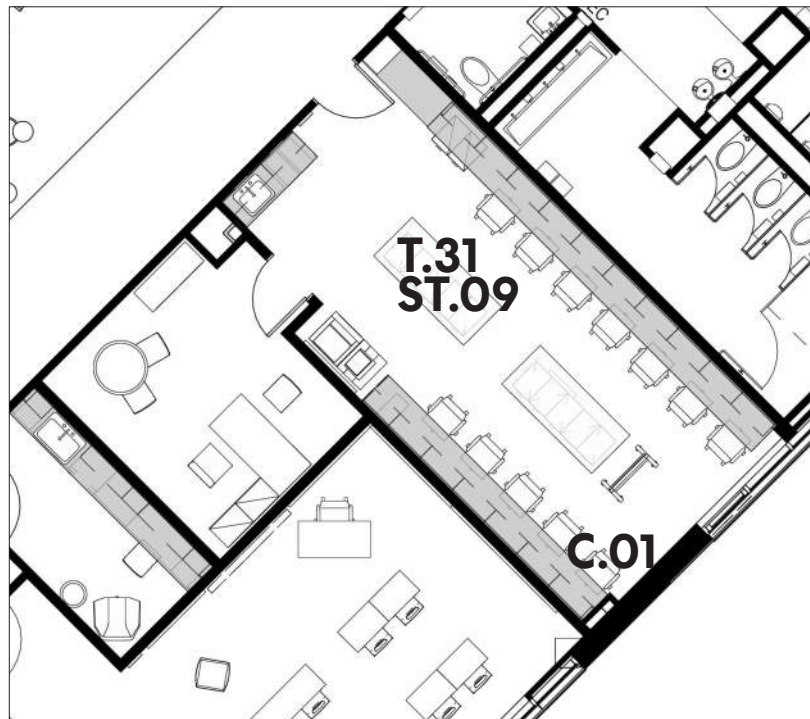


box-box-file storage on casters

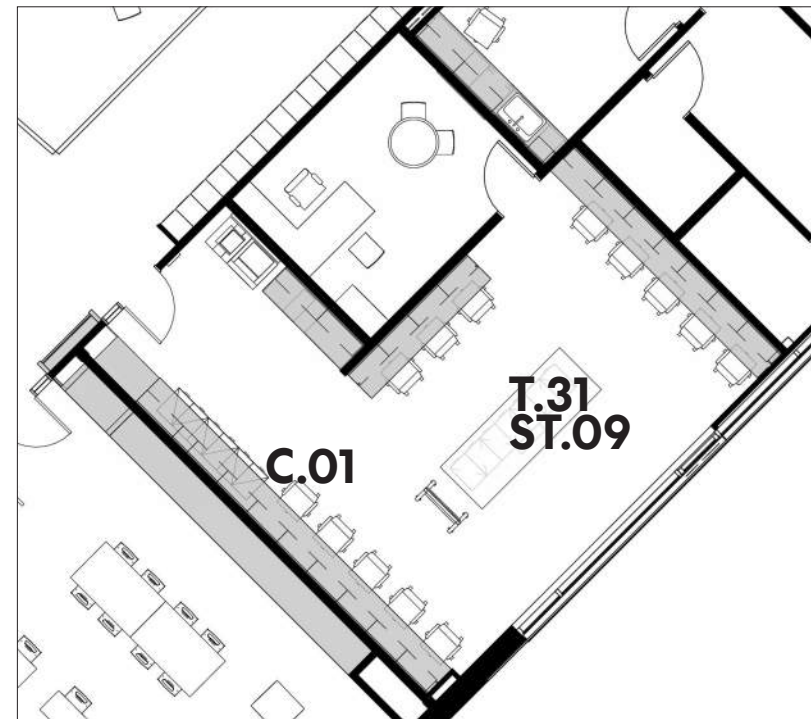
C.01



teacher planning chair



A202 furniture plan for reference only



A304 furniture plan for reference only

CORE ACADEMIC: SPECIAL EDUCATION TEACHER FURNITURE

D.01



teacher desk
30"x60"
note: to contain one storage ped below

ST.08



teacher podium
adjustable height
28"-42" tall
22"x26" surface

C.01



teacher chair

CORE ACADEMIC: SPECIAL EDUCATION STUDENT FURNITURE

D.02



student desk
hard plastic top

T.17



sit-to-stand pneumatic desk
(1) per classroom

T.08, T.08A



square and rectangular group work tables

C.02



student chair
note: final option pending

C.02



student chair
note: final option pending

C.05



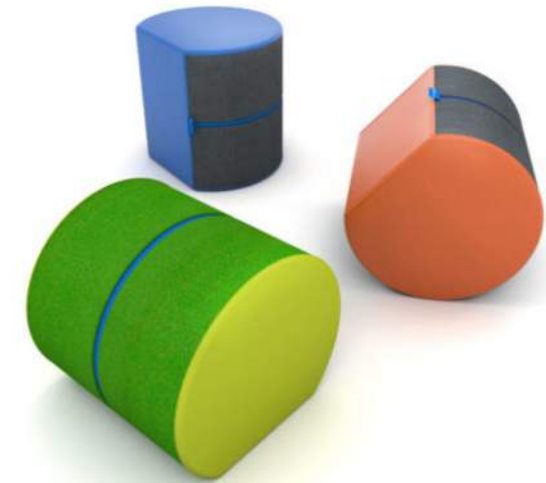
student rocking chair
note: final option pending

C.34



lounge chair
note: quantity of (2) total to be provided for huddle rooms only

C.09



ottoman

CORE ACADEMIC: HS SCIENCE TEACHER DEMO OPTIONS

HIGH SCHOOL SCIENCE - Demonstration Table Options

Option 1



(1) 48" LONG DEMO TABLE WITH ATTACHED LOWER SIDE TABLE (DESK HEIGHT) THAT TEACHER CAN USE FOR A DESK. 7-8 FOOT LONG FITS IN THE ROOM. NO CASTERS. CAN HAVE OPEN STORAGE.

(1) PODIUM

Option 2



(1) STOOL HEIGHT DEMO TABLE 7-8 FOOT LONG MAX FITS IN THE ROOM. MAY BE ABLE TO INCLUDE CASTERS.

(1) PODIUM

Option 3



48" LONG METAL DESK WITH FILE, ON CASTERS, AT TYPICAL DESK HEIGHT

48" LONG DEMO TABLE WITH OPEN STORAGE

(1) PODIUM

Option 4



42" LONG SIT-TO-STAND DESK

48" LONG DEMO TABLE WITH OPEN STORAGE

CORE ACADEMIC: HS SCIENCE FURNITURE

C.01A



teacher task stool

C.03



student stool with swivel seat

MIDDLE SCHOOL SCIENCE - Demonstration Table Options



(1) 4'-6" STOOL HEIGHT DEMO TABLE
MAY BE ABLE TO INCLUDE CASTERS.

(1) WHITEBOARD

C.01A



teacher task stool

C.03



student stool with swivel seat

CORE ACADEMIC: COMPUTER SPACES

D.06



computer desk

C.21B

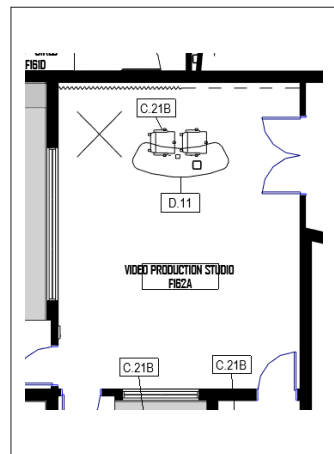


computer chair

D.12



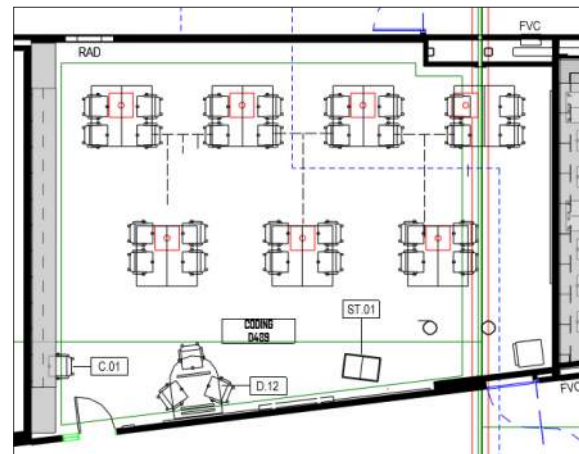
D-shaped monitor table



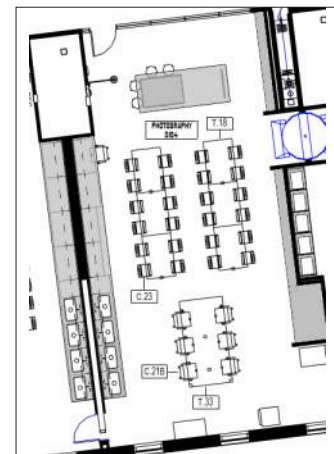
plan: photography



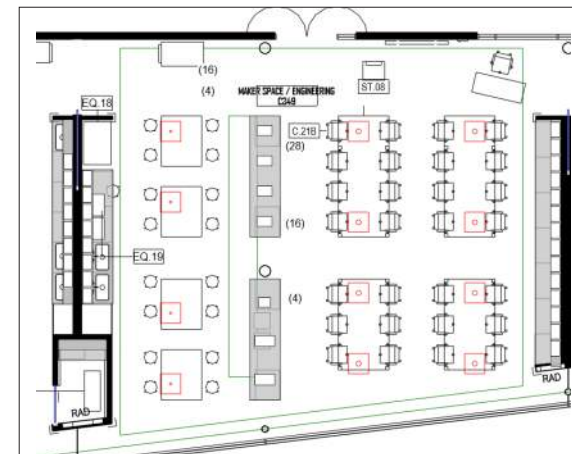
plan: world language



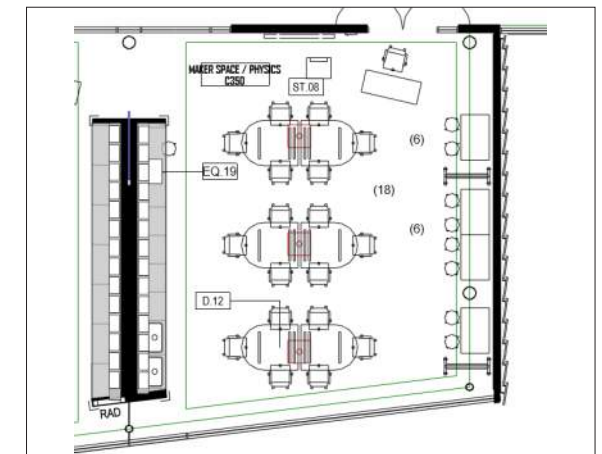
plan: coding



plan: photography



plan: engineering maker space



plan: physics maker space

VOCATIONAL: MAKER SPACES

C.16



maker space stool

T.09/T.09A/T.09B

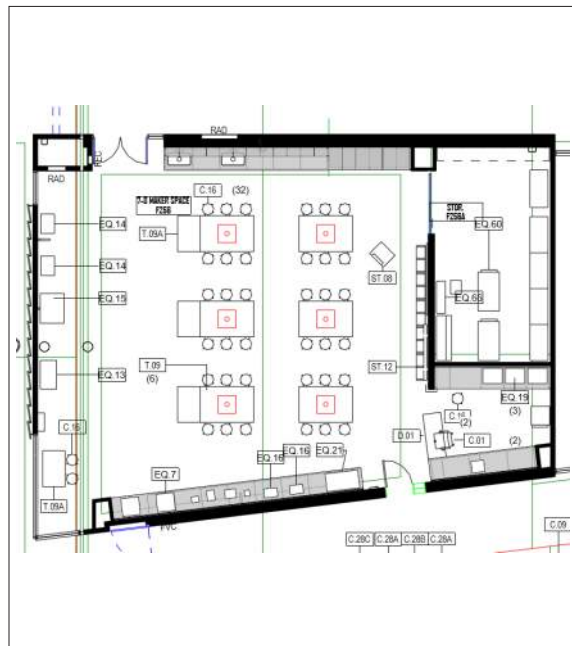


maker space table

EQ.97



maker space storage and cubbies



plan: MS maker space



plan: HS maker space

ART: ART CLASSROOMS

C.01A



teacher task stool

C.23



student chair
note: final option pending

C.23



student chair
note: final option pending

C.25



student stool

C.21B



digital art chair

T.18B



digital art table

T.18



art table
40"x60"



square legs



casters



epoxy top

T.33



custom pottery table

C.25A



pottery wheel stool
17"H

DINING: CAFETERIA SPACES

C.30



dining chair
note: final option pending

T.28



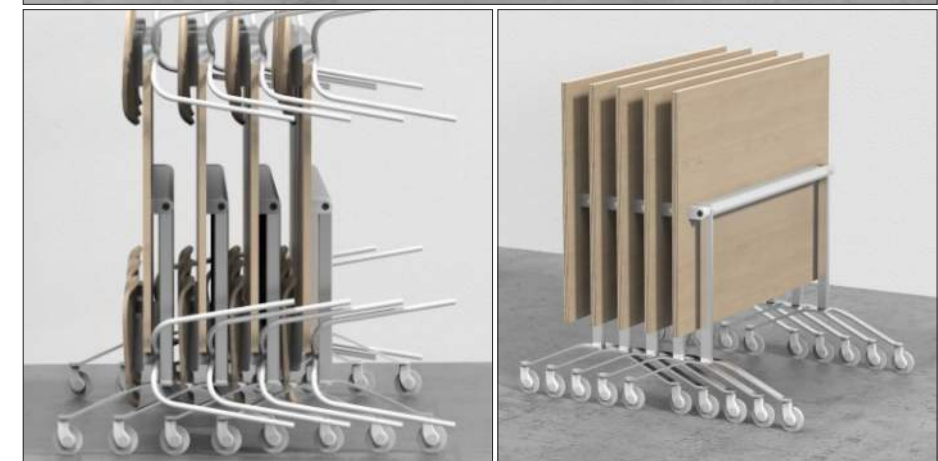
round dining table

T.23



rectangular dining table
note: pending confirmation on casters vs. no casters

T.22



high-density dining tables
note: tables nest and move together as one integrated system for convenient storage needs

C.30A



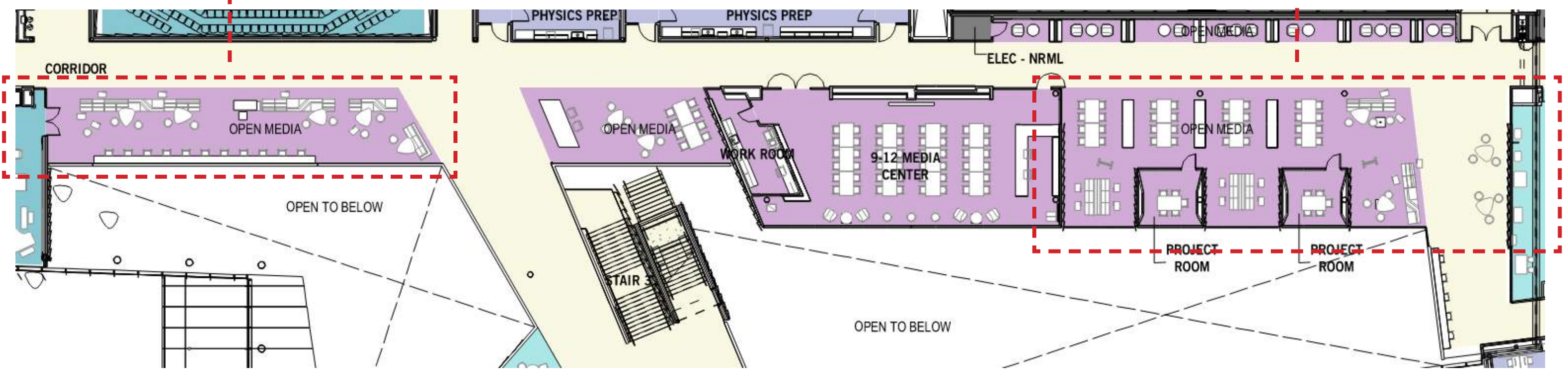
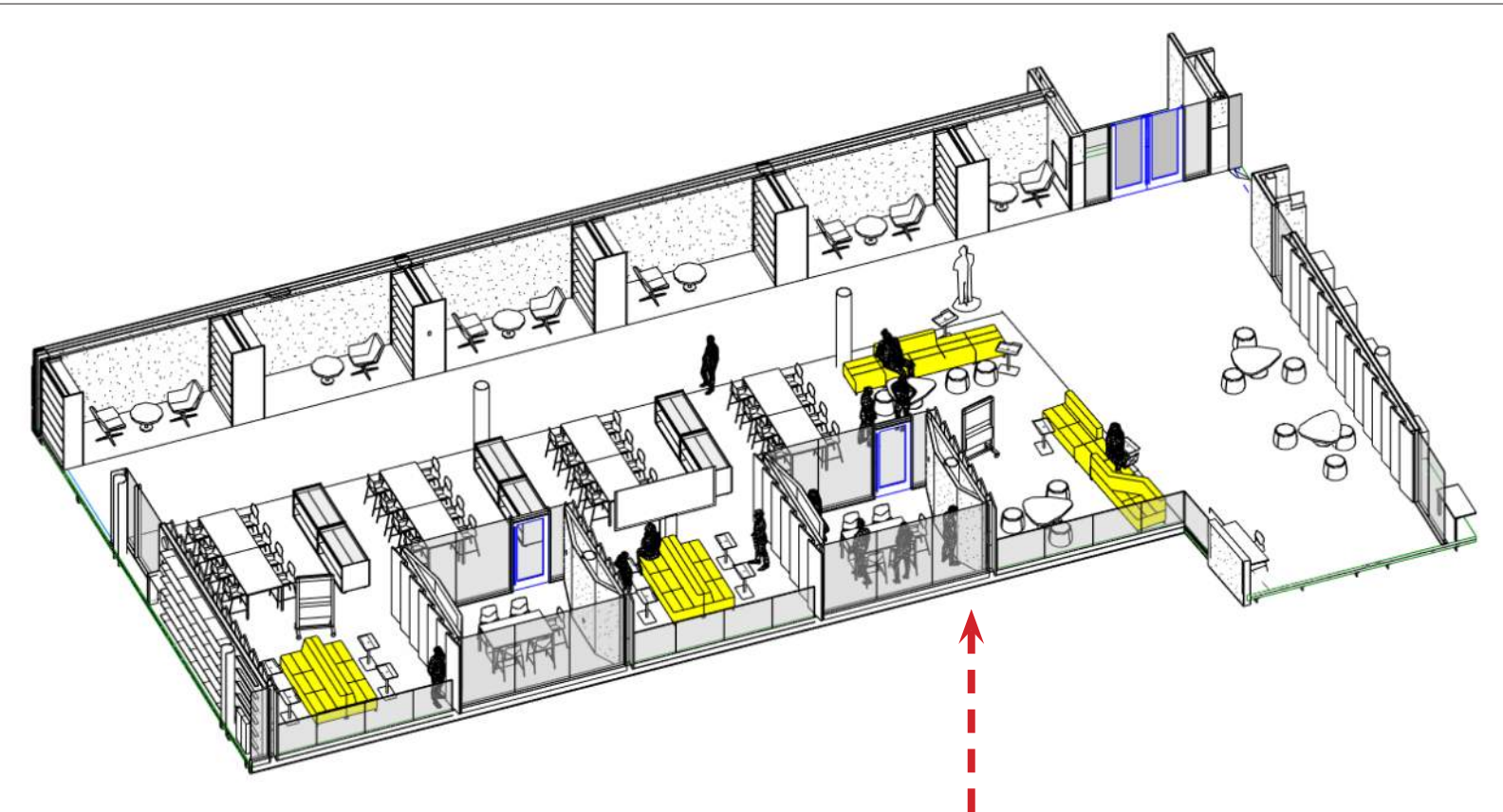
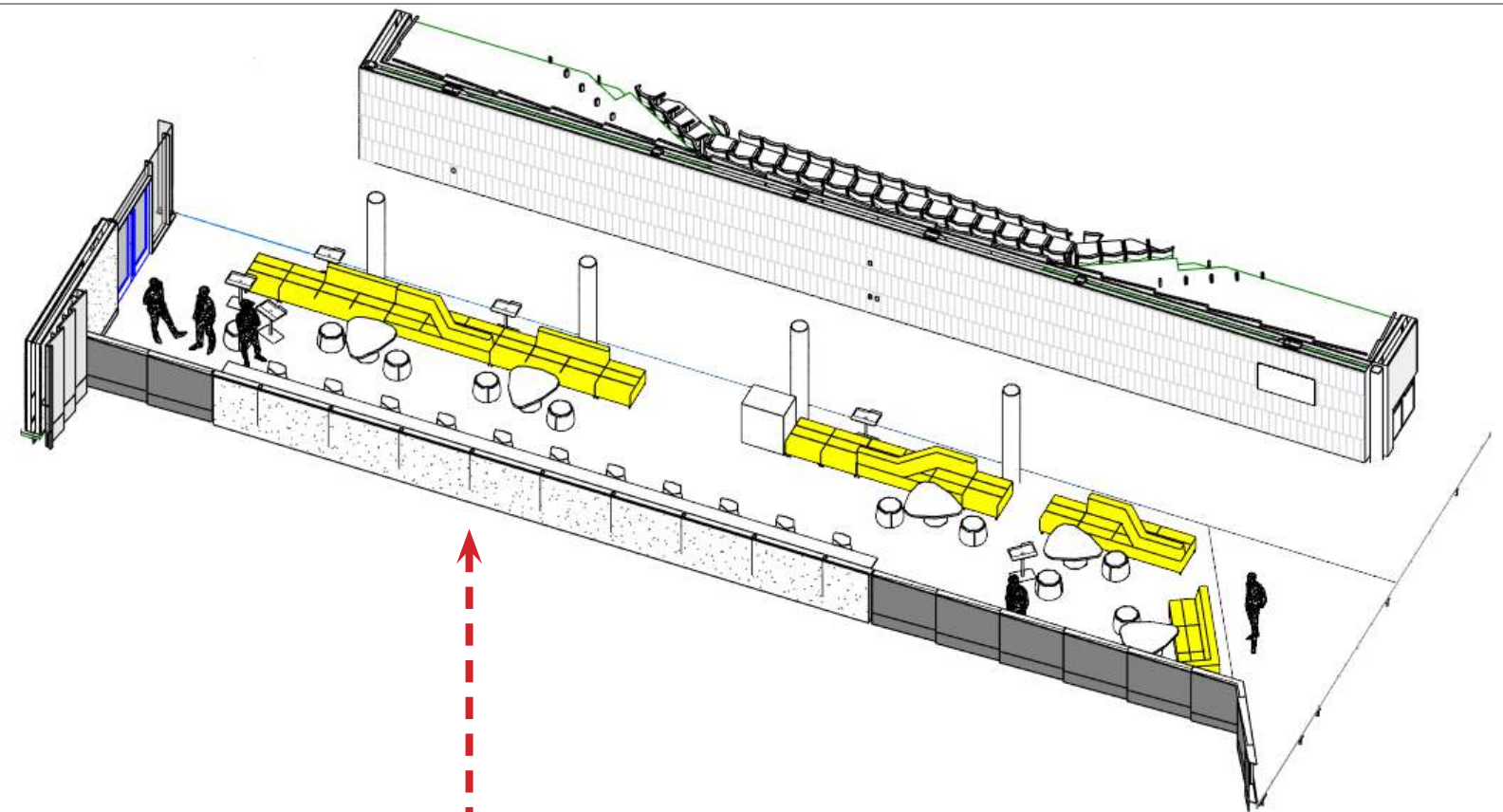
dining stool
note: final option pending

T.23D. T.23E



rectangular dining table, high top

MEDIA CENTER: HS



MEDIA CENTER: HS

C.33



lounge sofa
note: design intent is to use various arrangements of this sofa family

C.34



lounge chair

T.12A



occasional side table

C.09



ottoman

C.01A



library task stool

C.31



library work chair

T.23B



library work table

T.35



side table

T.07



laptop table

AV.01A



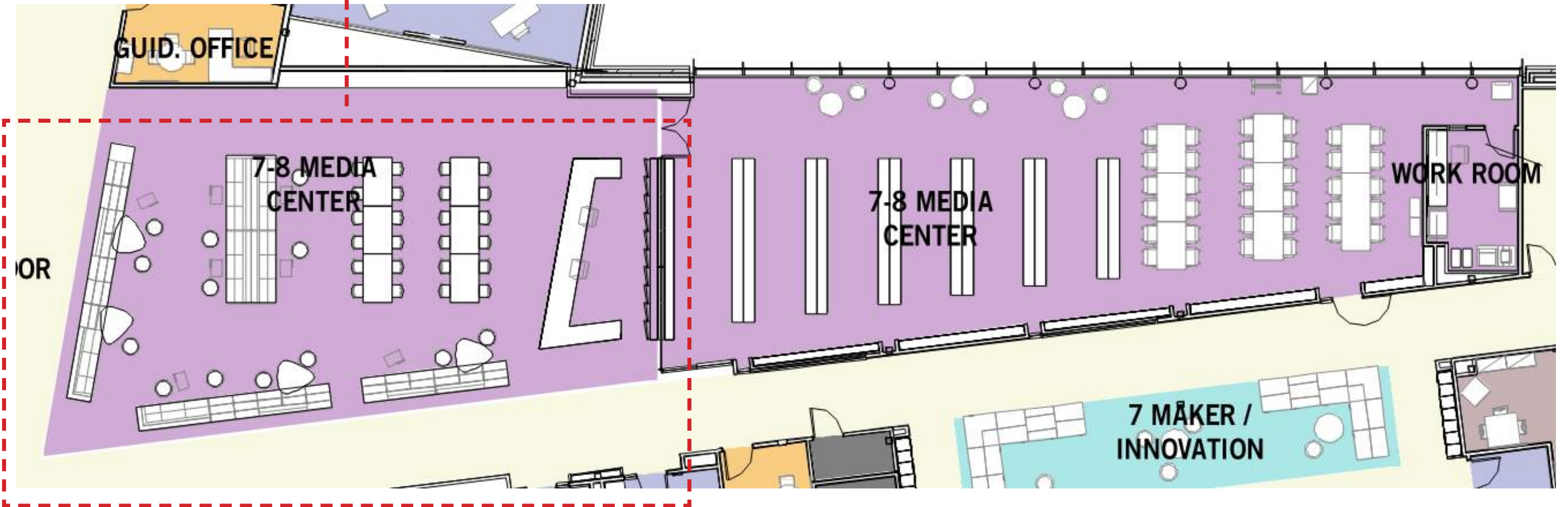
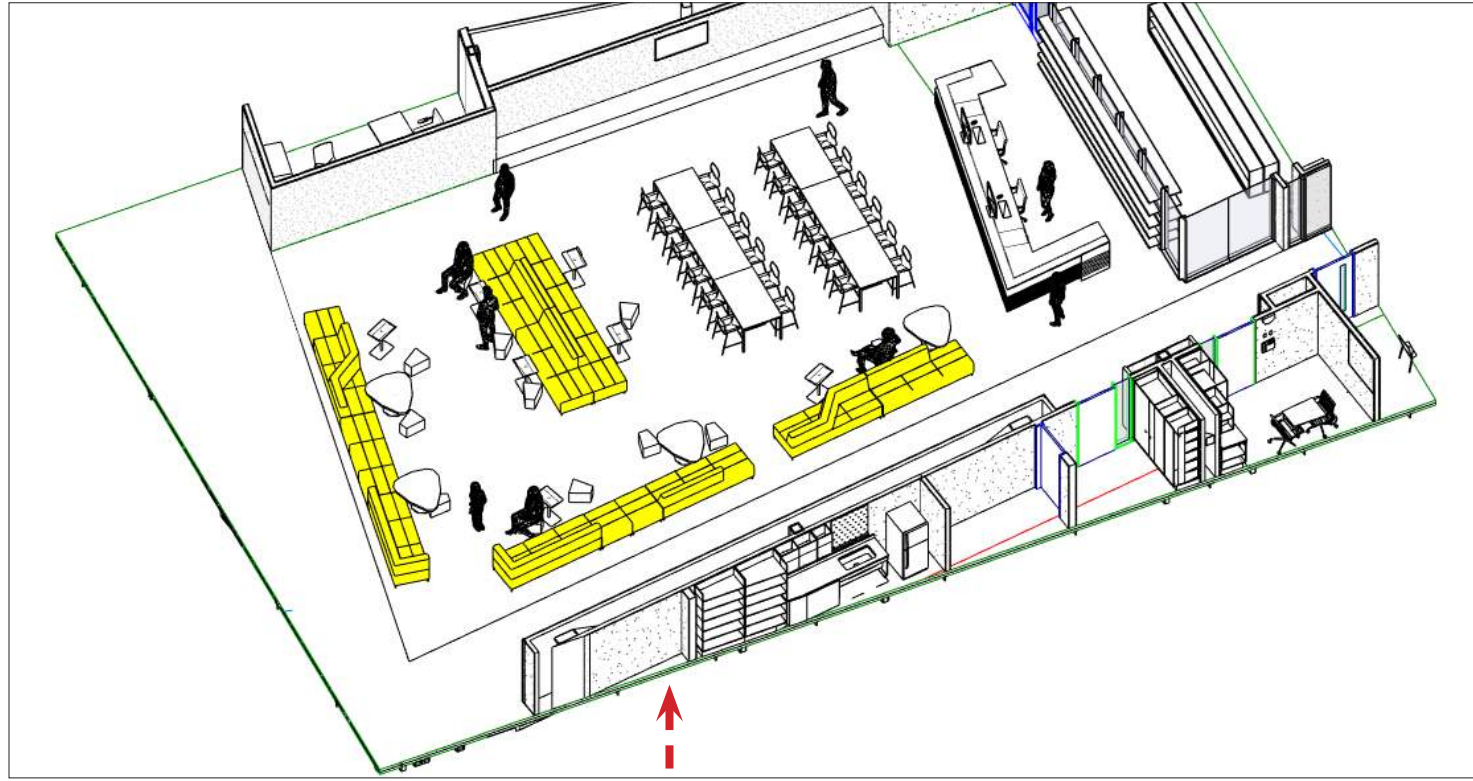
mobile markerboard

ST.13



mobile supply storage

MEDIA CENTER: MS PLAN



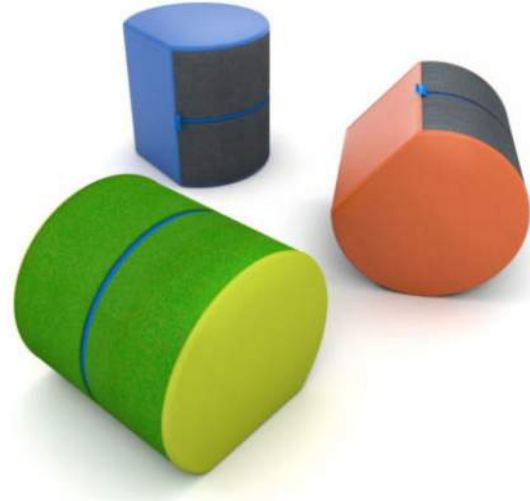
MEDIA CENTER: MS

C.33



lounge sofa
note: design intent is to use various arrangements of this sofa family

C.09



ottoman

C.09



ottoman

T.12A



occasional side table

C.01A



library task stool

C.31



library work chair

T.23B



library work table

T.35



side table

T.07



laptop table

AV.01A



mobile markerboard

ST.13



mobile supply storage

BREAKOUT SPACES: HS ENTRY AREA

C.34



lounge chair

C.09



ottoman

T.35



occasional side table

C.31 OPTION



side chair

C.31 OPTION

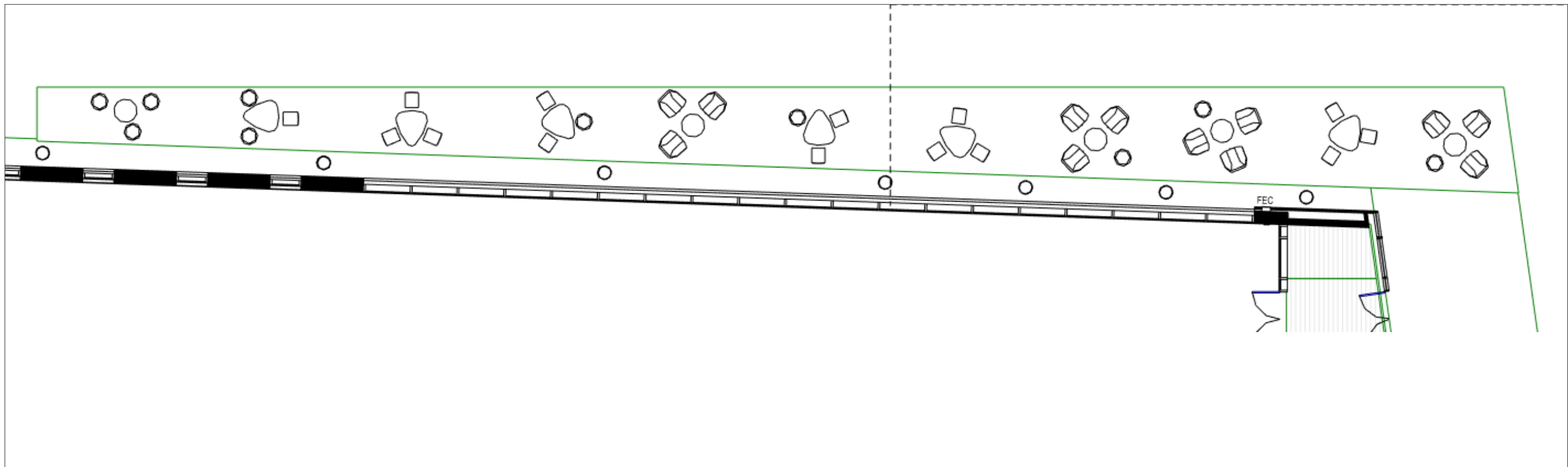


side chair
note: final option pending

T.35



side table



plan: HS entry breakout area

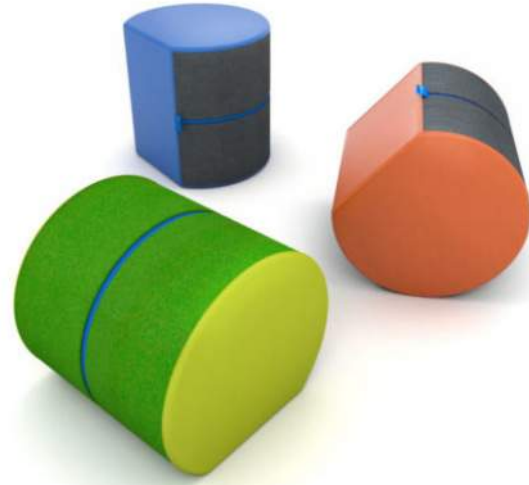
BREAKOUT SPACES: TYPICAL HS BREAKOUT AREA (LEVELS 01-04)

C.31



side chair

C.09

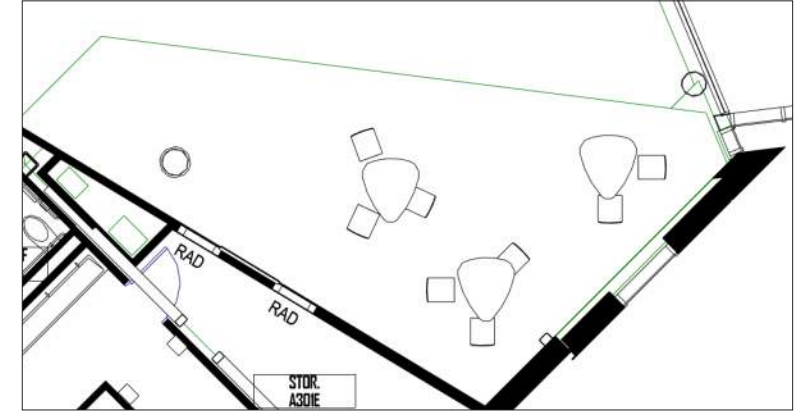


ottoman

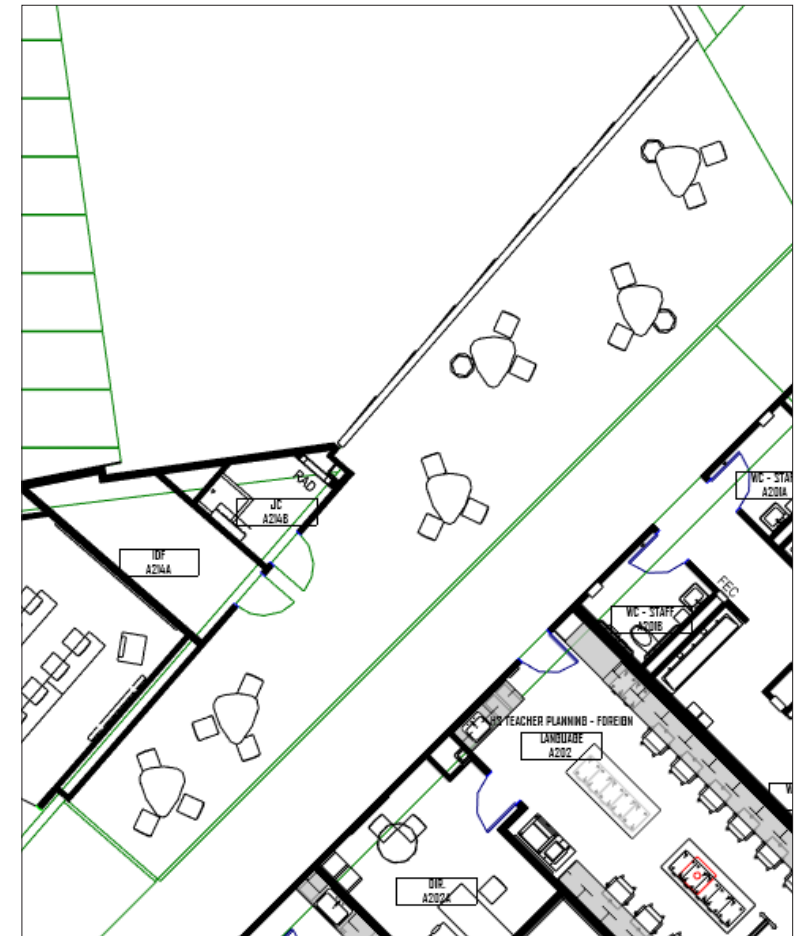
T.35



side table



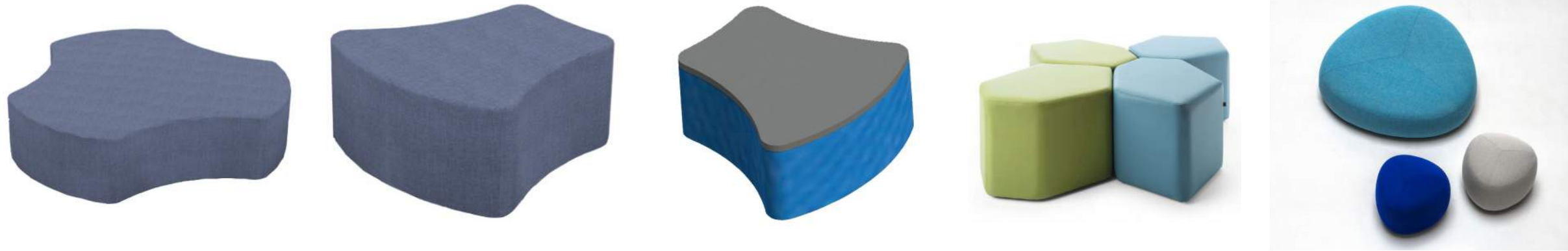
plan: typical HS breakout area example reference



plan: typical HS breakout area example reference

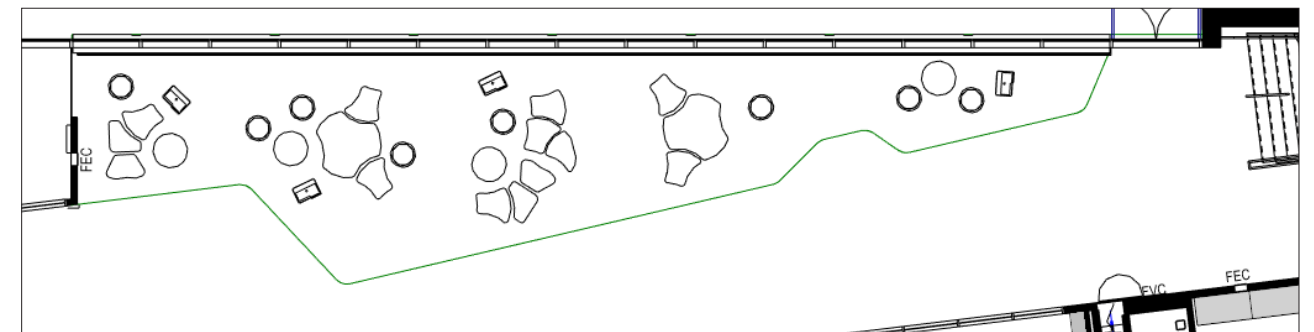
BREAKOUT SPACES: MS ENTRY AREA

C.28 ASSORTED



lounge sofa ottomans

note: design intent is to use various shapes and sizes to playfully accent the building's architecture



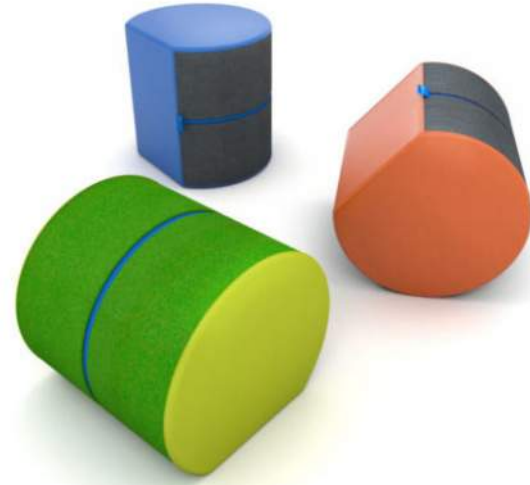
plan: MS entry breakout area

BREAKOUT SPACES: MS CLASSROOM POD BREAKOUT SPACE

C.28A



C.09



T.06

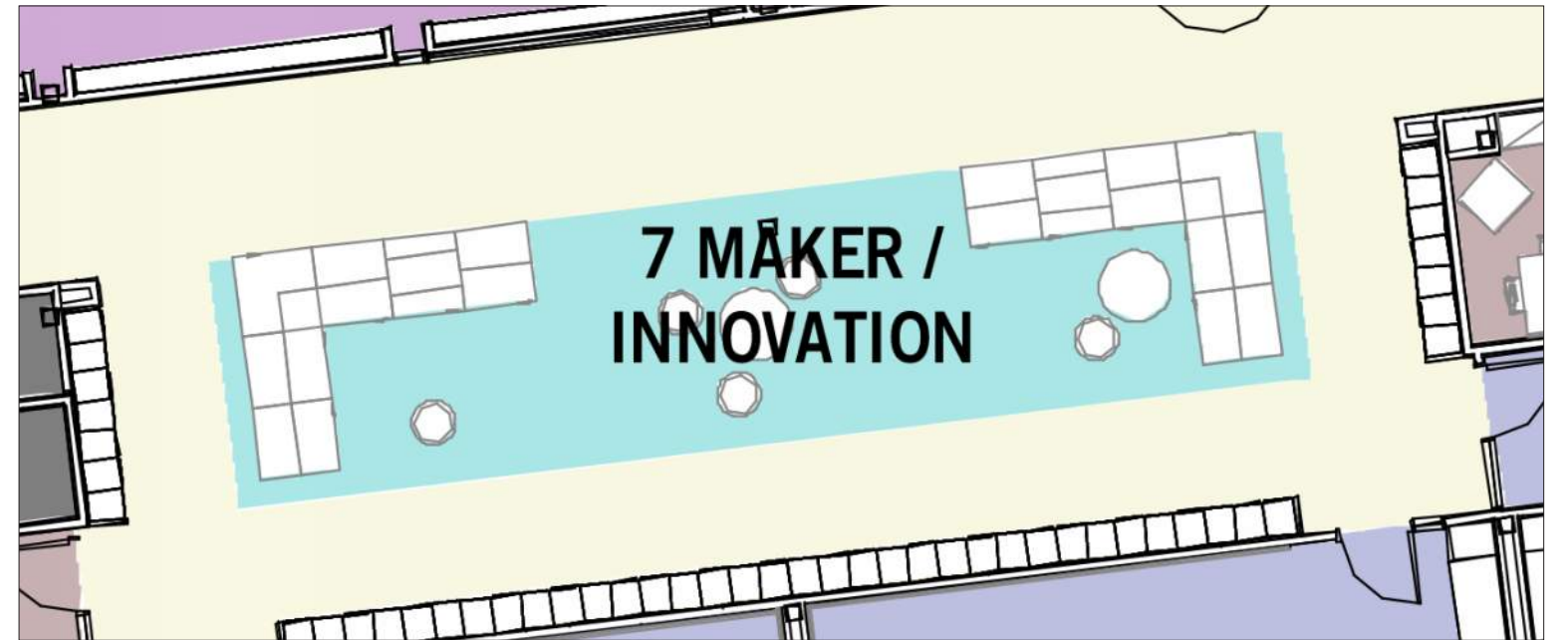


ottoman

round meeting table



MS classroom pods lounge pieces
2-step
2-step corner



plan: MS classroom pod area

ADMINISTRATION: TYPICAL OFFICES



WS.1
typical office kit of parts includes: L-shaped desk w/ modesty panel + storage as shown, tack panel, markerboard, and bookshelf with storage as shown

C.20



office task chair
note: final option pending

C.22



office guest chair
note: final option pending

T.06

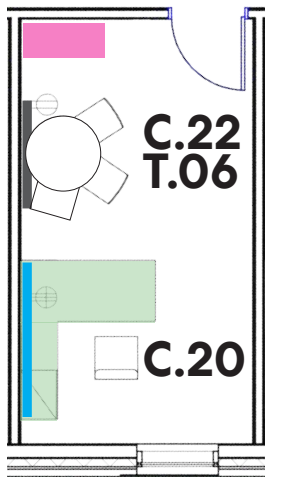


round meeting table

WS.1 KIT OF PARTS

- L-shape desk
- low return storage
- (1) 60”H bookcase/file
- meeting table w/ (3) guest chairs
- tack board + markerboard

- | | |
|---------------|--------------|
| bookcase/file | tack board |
| markerboard | work surface |



ADMINISTRATION: PRINCIPAL OFFICES



WS.2
high school principal kit of parts: L-shaped desk with tack panel, lower storage, overhead storage, and full-height modesty panel as shown; round meeting table with (4) side guest lounge chairs; *note: chairs in rendering shown for representational purposes only*



WS.3
middle school principal kit of parts: L-shaped desk with lower storage, tack panel, and full-height modesty panel as shown; side storage w/ wardrobe and wall-shelving; round meeting table with (4) side guest lounge chairs; *note: chairs in rendering shown for representational purposes only*

C.20



office task chair
note: final option pending

C.22



office guest chair
note: final option pending

T.06



round meeting table

ADMINISTRATION: ADMINISTRATIVE ASSISTANTS



WS.4

typical assistant kit of parts includes: L-shaped desk w/ modesty panel + storage as shown, tack panel, and overhead storage

C.20



office task chair
note: final option pending

IT SUITE: WORK ROOMS FURNITURE OPTIONS

C.22



side chair
note: final option pending

C.20

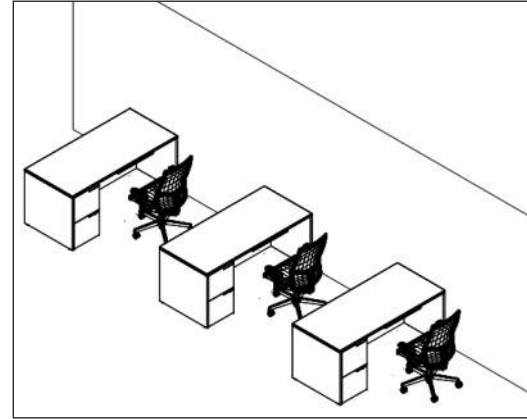


task chair
note: final option pending

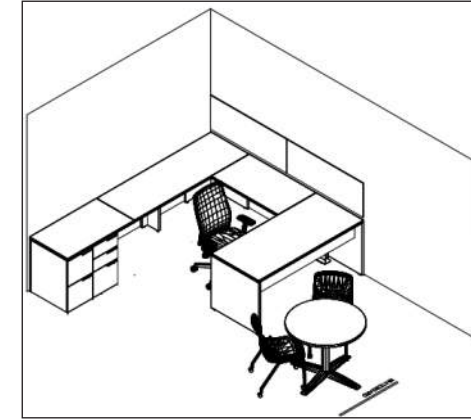
EQ.170



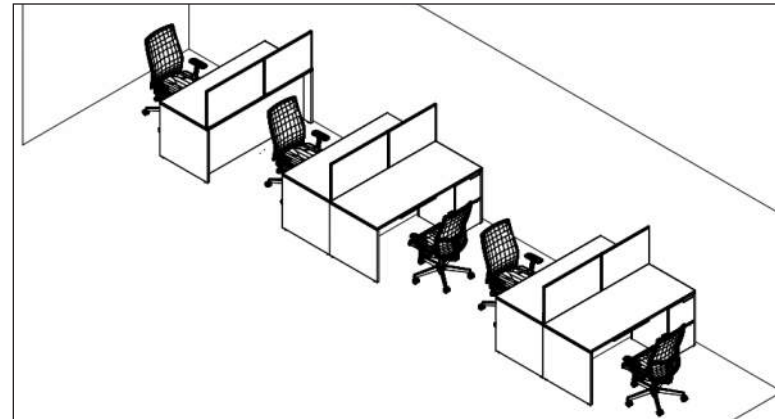
staging bench w/ power 3'x10'



IT Suite Work Room F179A
Axon View



IT Suite Office F179E, F179F
Axon View



IT Suite Work Room F179D
Axon View



Typical Office Rendering

note: all finishes and general types of these offices/
workstations will be the same as a typical private
office



ADMINISTRATION: CONFERENCE ROOMS / HUDDLE ROOMS

C.01



meeting chair

T.01-T.05



rectangular conference table



T.06



round conference table

ST.13



mobile storage cabinet

ST.06
ST.06A



credenza

ADMINISTRATION: RECEPTION AREAS

C.22



HS corridor guest chair
note: final option pending

T.12



side table

C.12



HS/MS main reception side guest chair

C.20A



task stool at millwork locations

ST.10A



fixed box-box-file ped

ADMINISTRATION: HS STAFF LUNCH ROOM

C.30



dining chair
note: final option pending

C.35

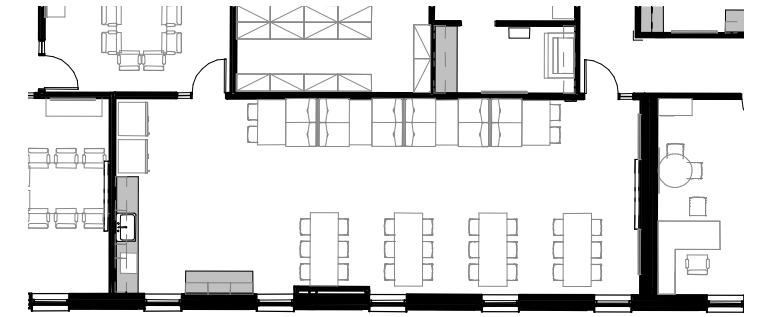


high-back dining booth

T.23B
T.23G



rectangular dining table



plan: HS staff lunch room

WELLNESS

C.37



mothers room chair

T.07



laptop table

C.02



student chair
note: final option pending

C.21B



chair on casters

C.08



exam stool

T.15B



scoreboard table
flip-top on casters w/ modesty panel

MUSIC

D.01



teacher desk w/ single ped

ST.08



teacher podium
adjustable height

C.01



teacher chair

EQ.155



student music chair

D.06



electronic music tables

C.21B



electronic music chair

AUDITORIUM AND BLACK BOX

C.21A



makeup chair

C.25



theater shop stool

C.26A



balcony box chair
note: final option pending

C.37



black box chair
note: final option pending

EQ.192



theater shop work table