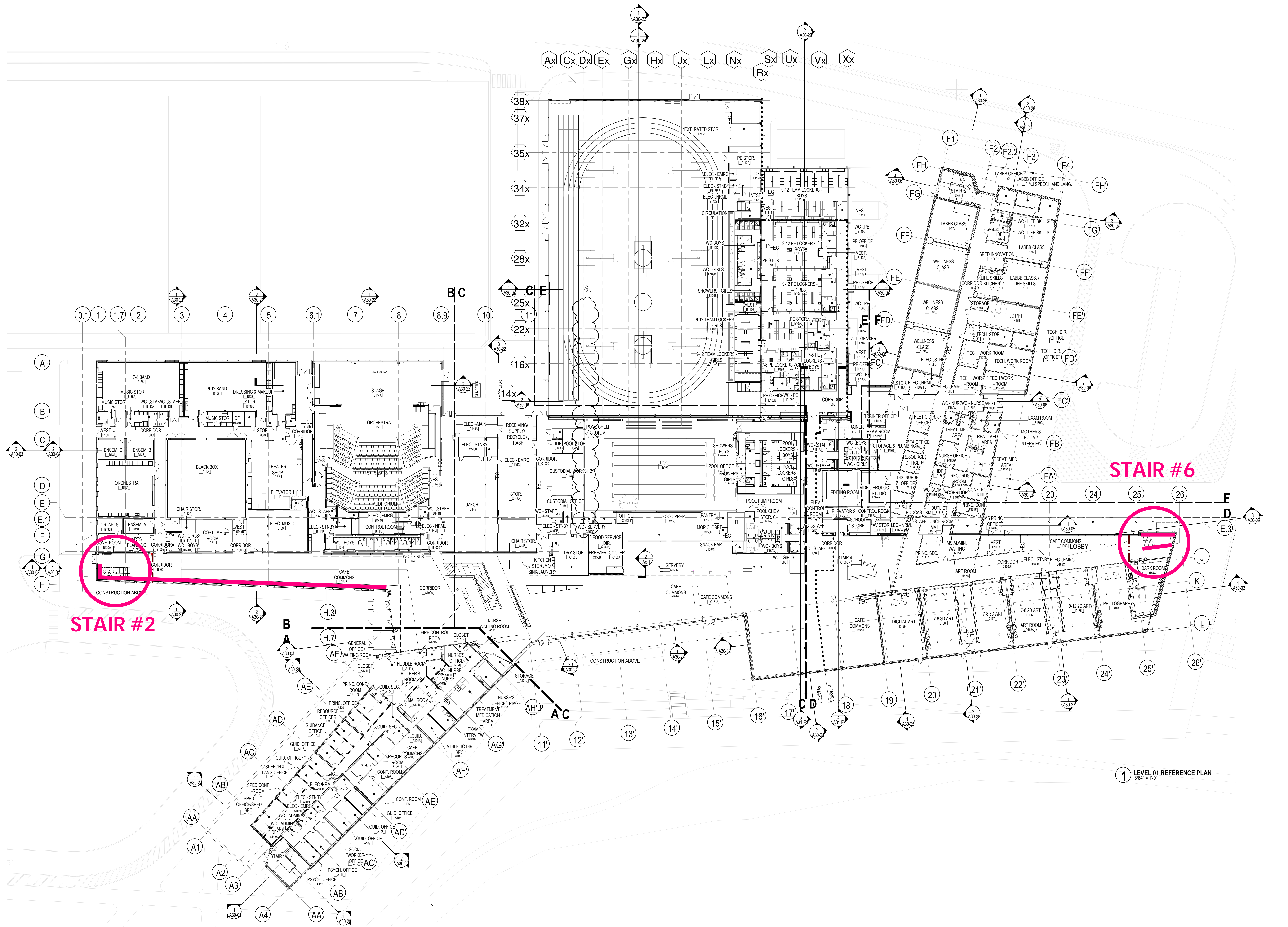


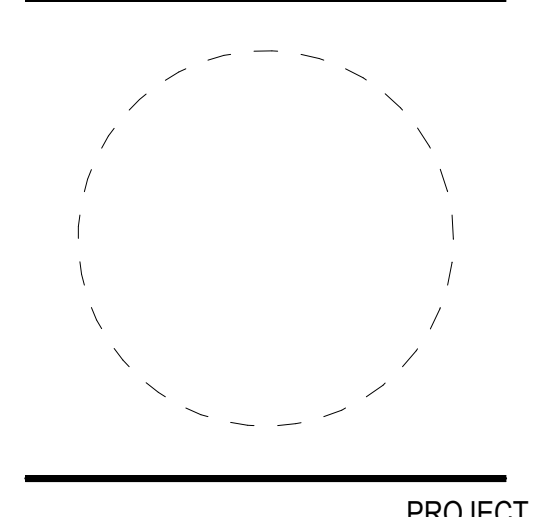
# **TILE AT STAIR #2 & #6, #3, AND GROUND FLOOR**

# TILE AT STAIR #2 & #6



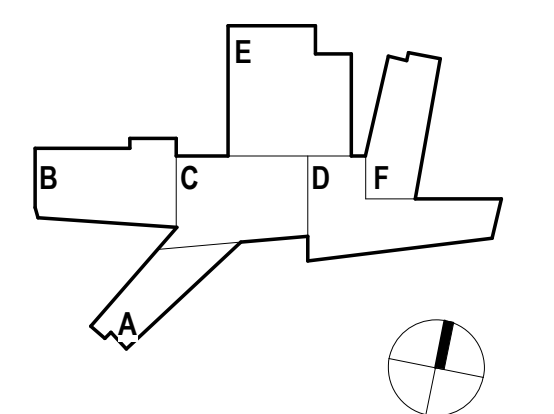
STAIR #2

STAIR #6



PROJECT  
**BELMONT MIDDLE AND HIGH SCHOOL**  
 221 CONCORD AVE.  
 BELMONT, MA 02478

TOWN OF BELMONT  
 KEYPLAN



REVISIONS

MARK	ISSUE	DATE
2	ASH-02	02/13/2020
1	EBP - ADDENDUM #1	03/20/19

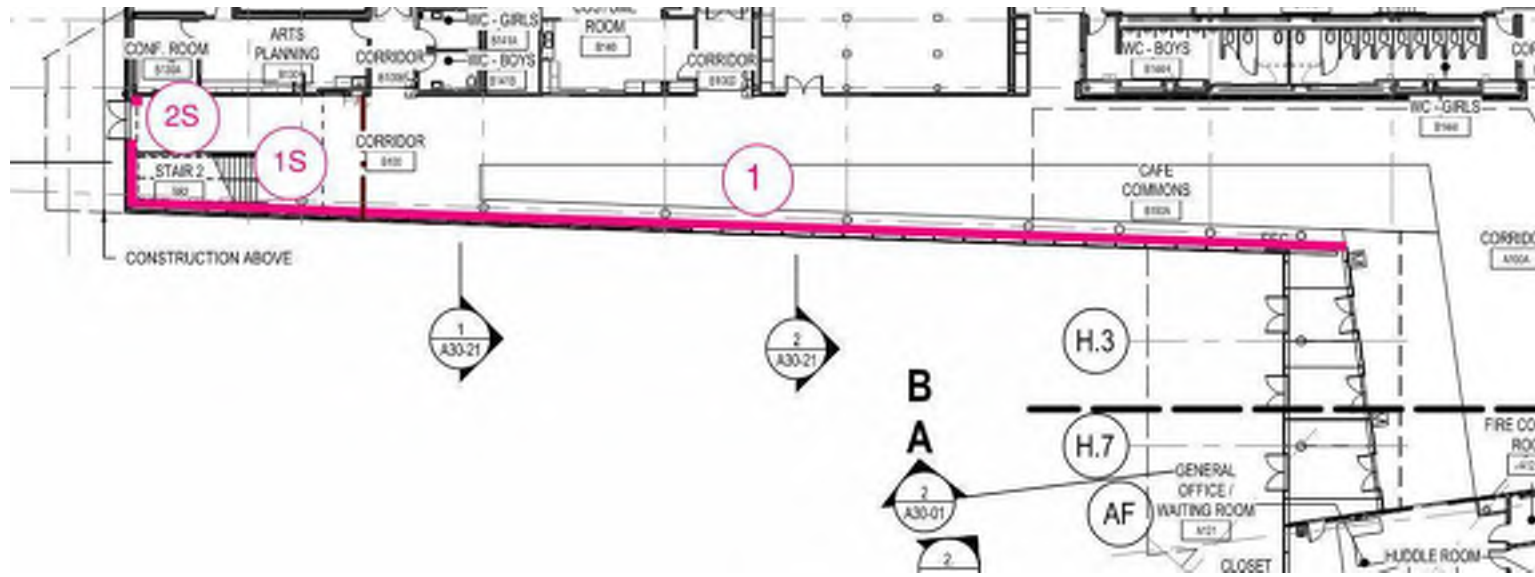
CONFORMED SET  
 02.06.2020  
 JOB NUMBER 153003.001  
 DRAWN  
 CHECKED

LEVEL 01 REFERENCE PLAN

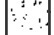


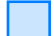
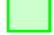


A10-01

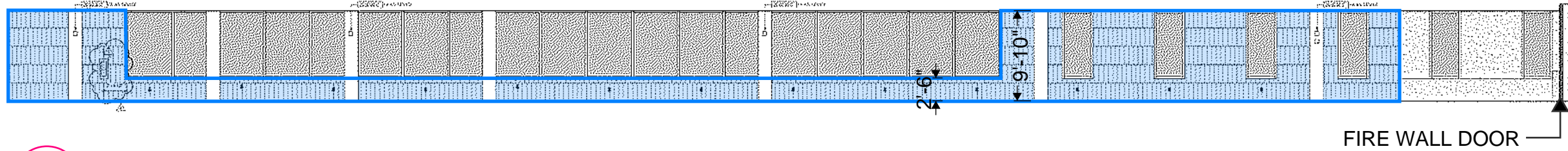
**KEY PLAN**

# REFERENCE ELEVATION TO PRICE



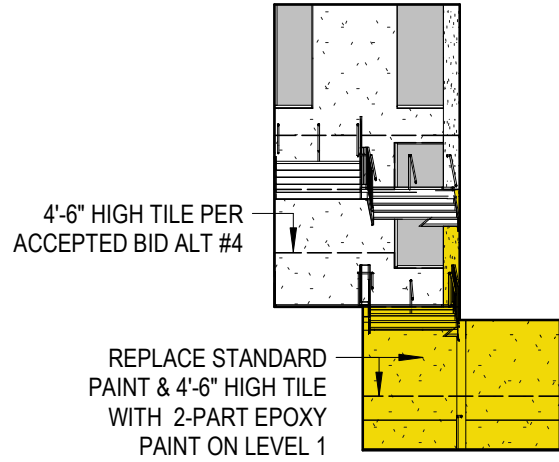
**ELEVATION KEY**

-  GYPSUM BOARD, PAINTED
-  INTERIOR GLAZING (EXTERIOR GLAZING ALSO SHOWN ON THIS SHEET)
-  PERFORATED METAL RAIL
-  REMOVE TILE & REPLACE WITH PAINTED HIGH-IMPACT GWB
-  REPLACE STANDARD PAINT W/ 2-PART EPOXY PAINT PER SPEC SECTION 090007-3.10-G.2
-  REMOVE CURRENT FINISHES & REPLACE WITH 4'-6" HIGH TILE (PER NOTE 2 UNDER INTERIOR WALL TYPE D, SHEET A61-01; TYP FOR ALL TILE) (PAT-2 FOR LEVEL 1, PAT-1 FOR LEVELS 2-4; TILE COLORS TBD)
-  REMOVE CURRENT FINISHES & REPLACE WITH FULL-HEIGHT TILE ON MOISTURE RESISTANT GWB (PAT-4.1; TILE COLORS TBD)

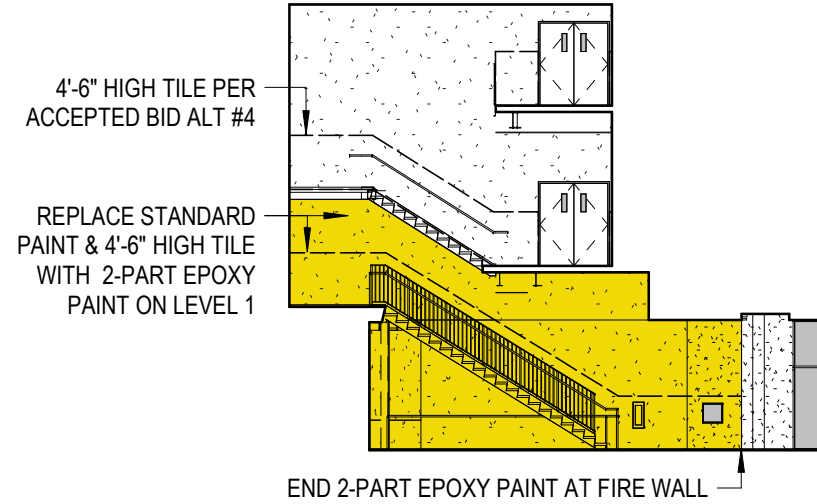


SEE STAIR TILE TO PRICE PDF FOR THE REST OF THIS ELEVATION

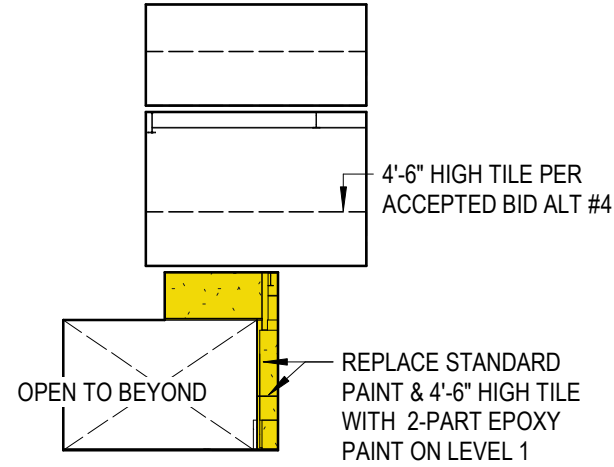
1 A: SEE ELEVATION KEY



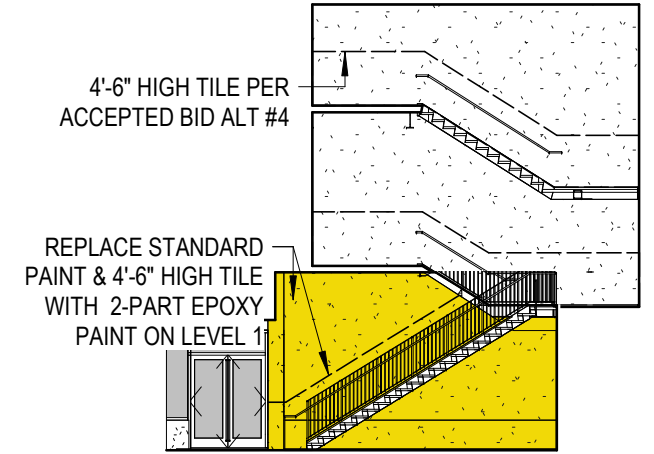
**6S** STAIR 6 TILE - EAST  
1/16" = 1'-0"



**5S** STAIR 6 TILE - SOUTH  
1/16" = 1'-0"



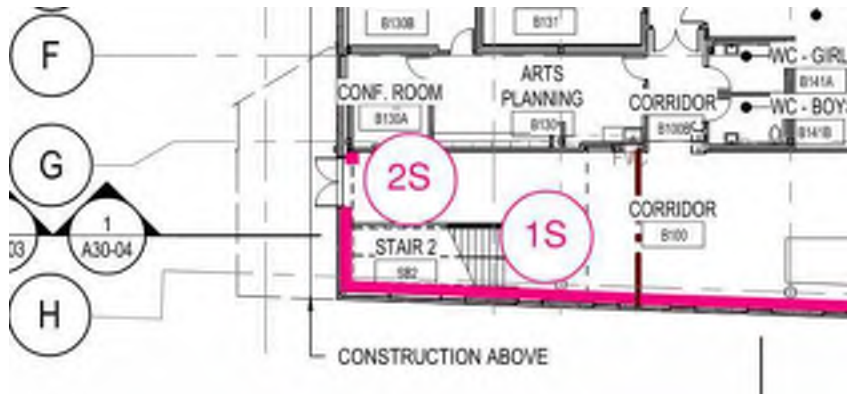
**4S** STAIR 6 TILE - WEST  
1/16" = 1'-0"



**3S** STAIR 6 TILE - NORTH  
1/16" = 1'-0"

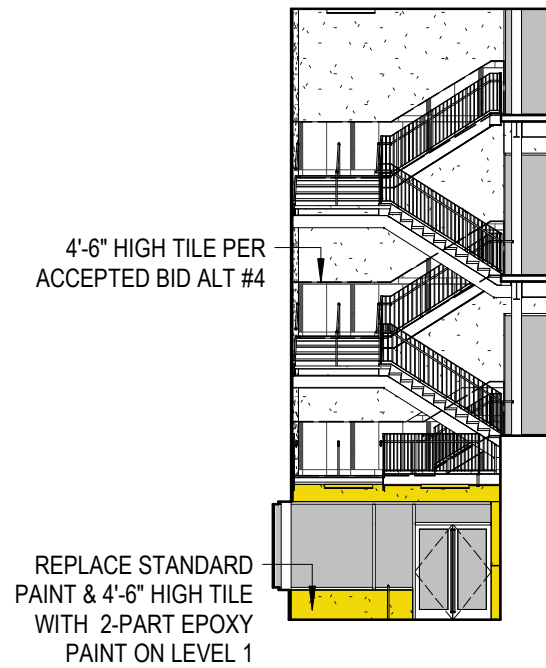
**KEY PLANS**

# REFERENCE ELEVATION ■ TO PRICE

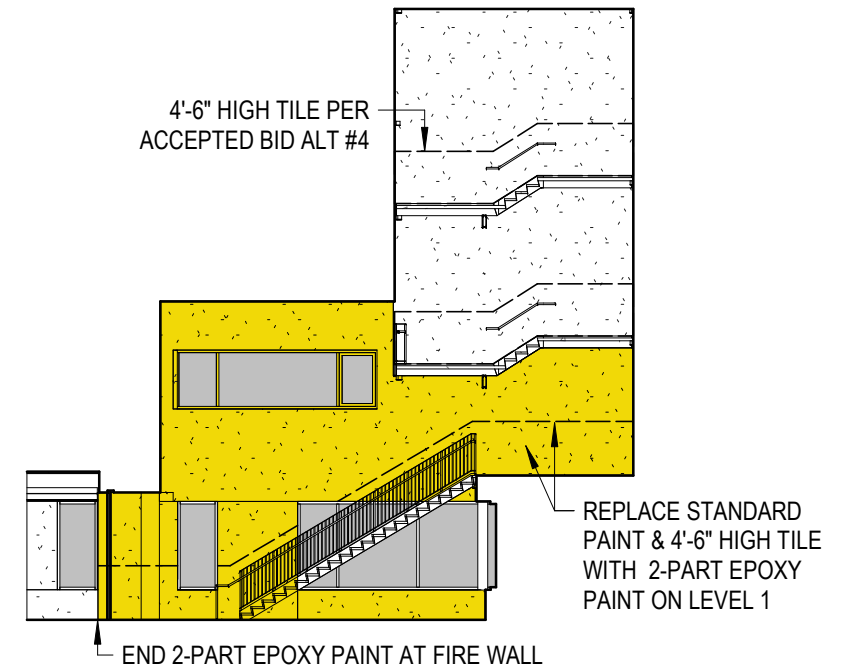


**ELEVATION KEY**

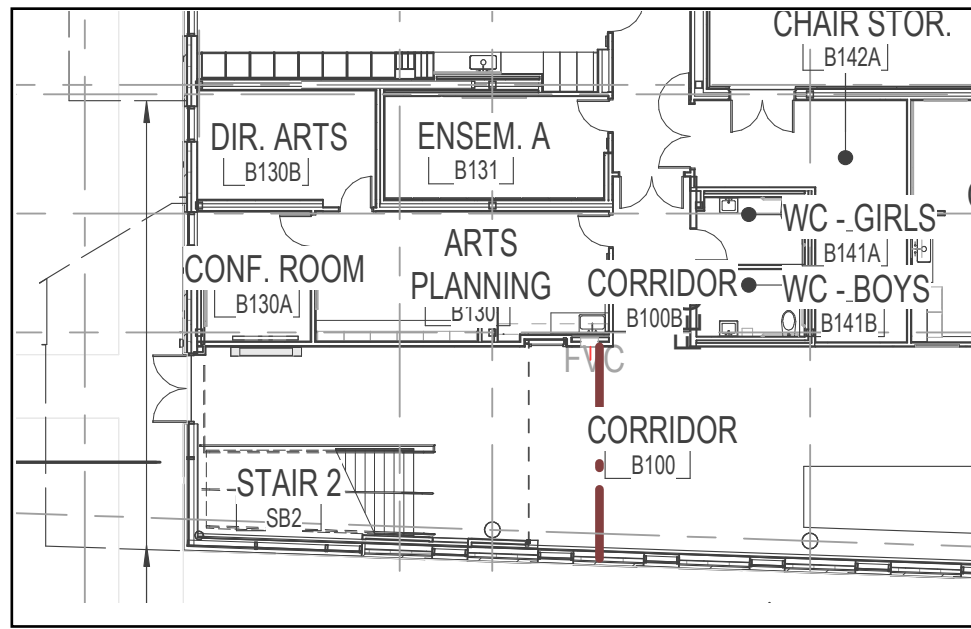
- GYPSUM BOARD, PAINTED
- GLAZING
- PERFORATED METAL RAIL
- REMOVE CURRENT FINISHES & REPLACE W/ 2-PART EPOXY PAINT PER SPEC SECTION 090007-3.10-G.2



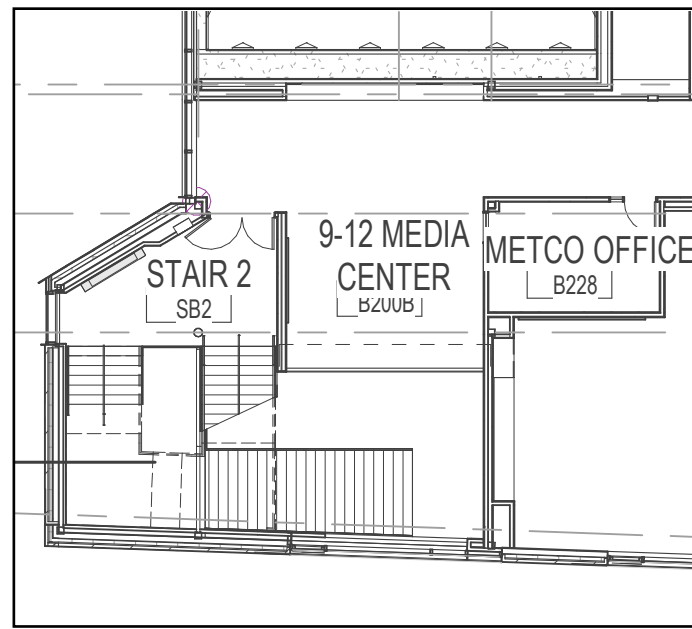
**2S** STAIR 2 TILE - WEST  
1/16" = 1'-0"



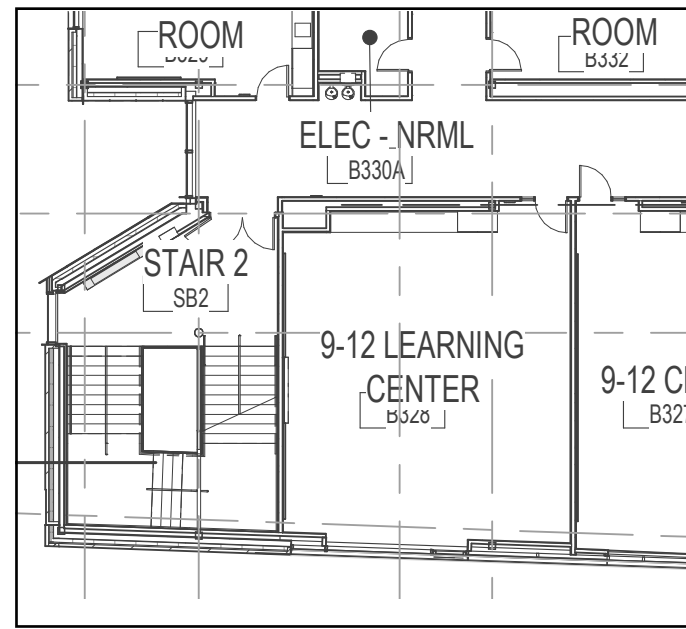
**1S** CORRIDOR TILE - B100 SOUTH  
1/16" = 1'-0"



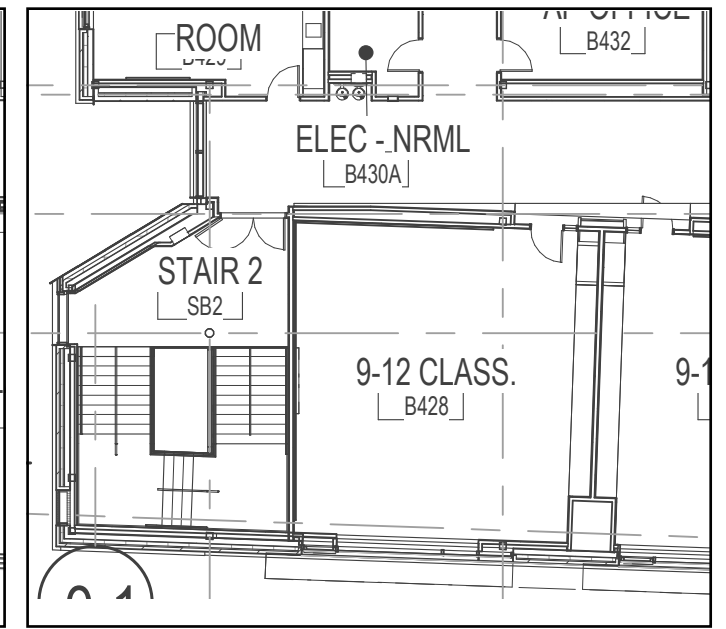
LEVEL 01



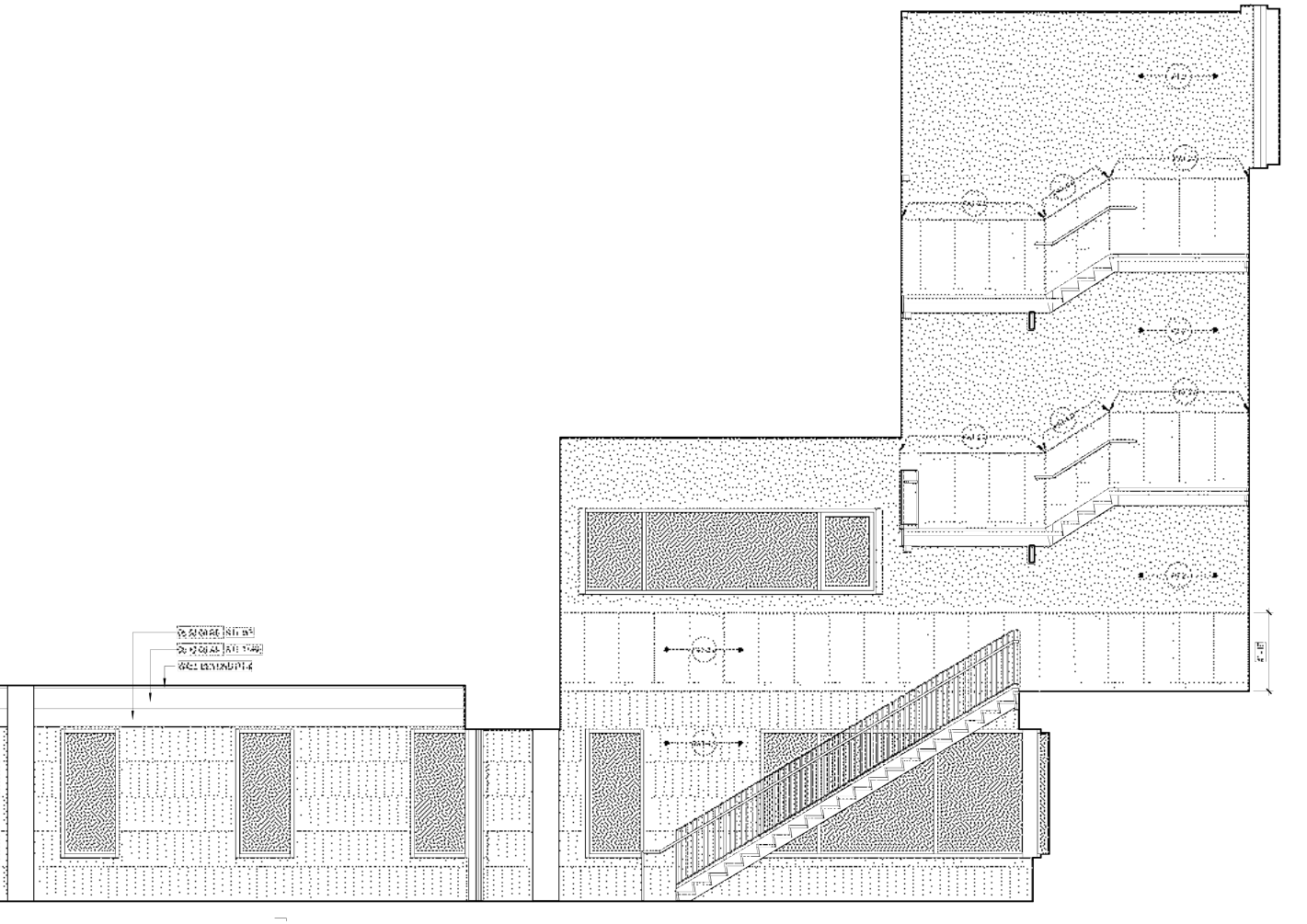
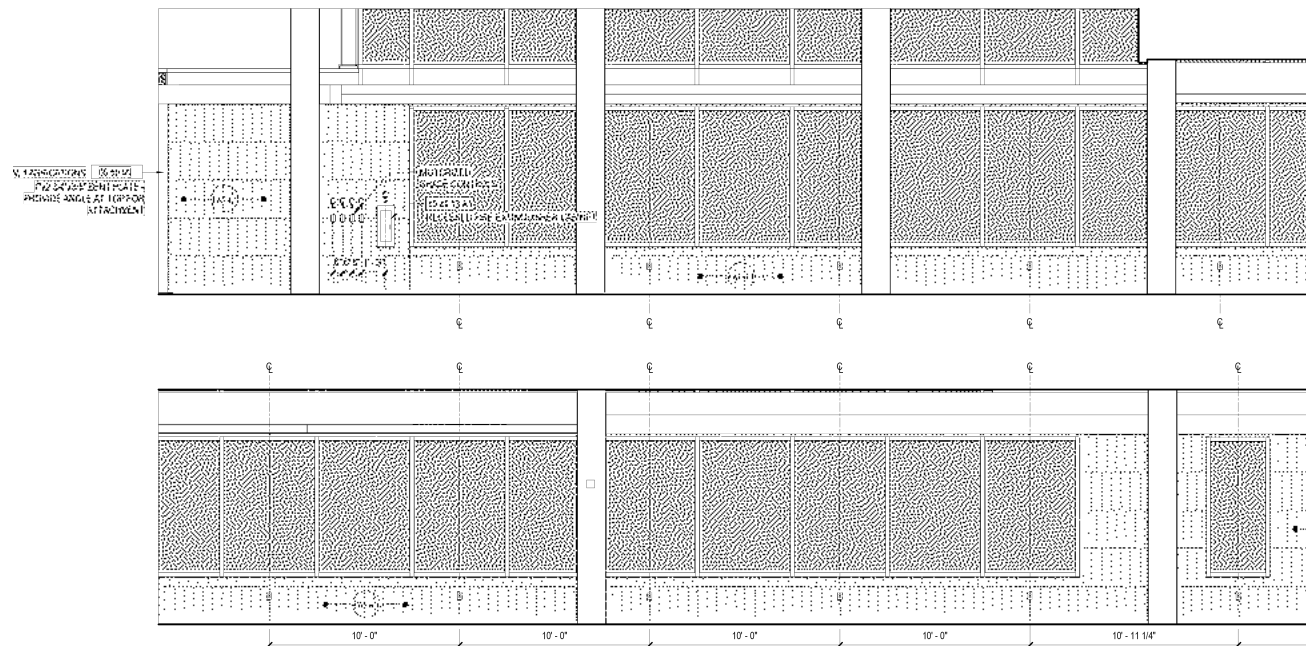
LEVEL 02

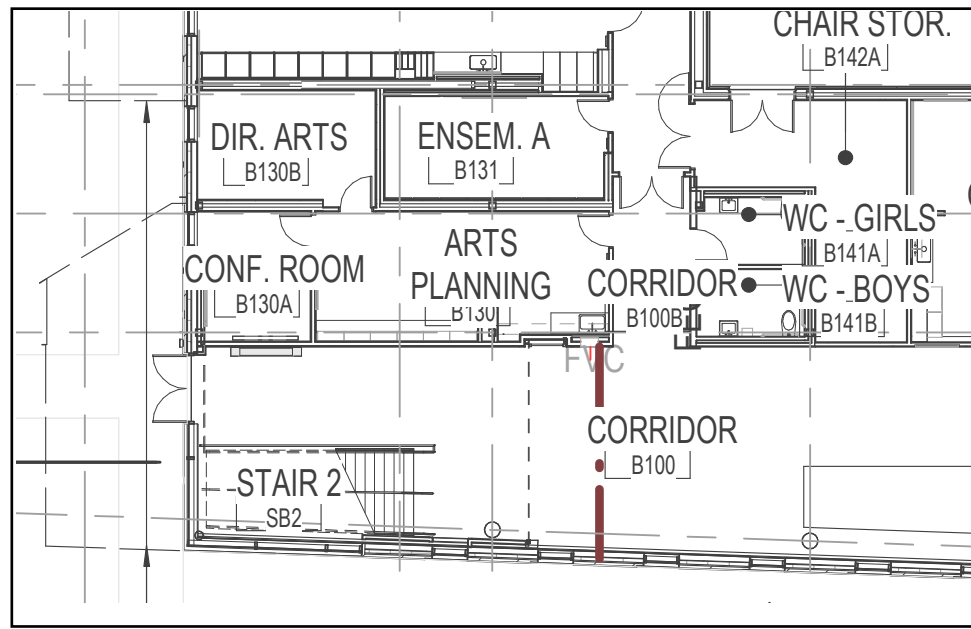


LEVEL 03

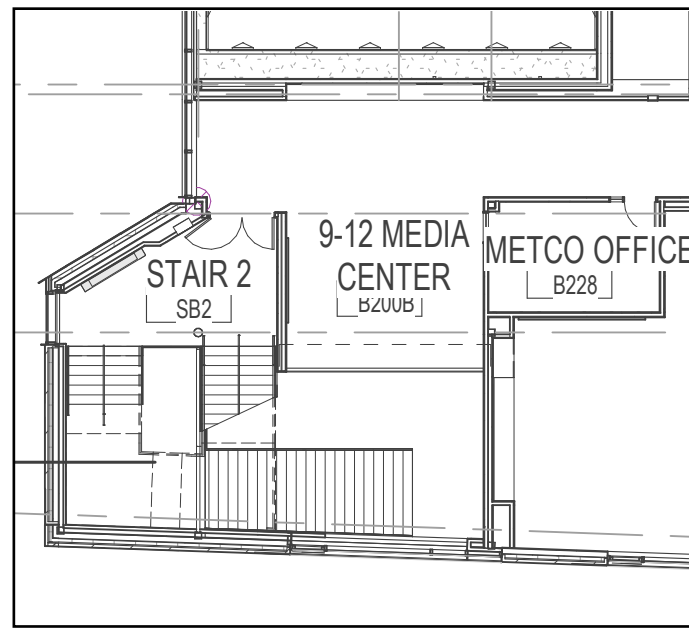


LEVEL 04

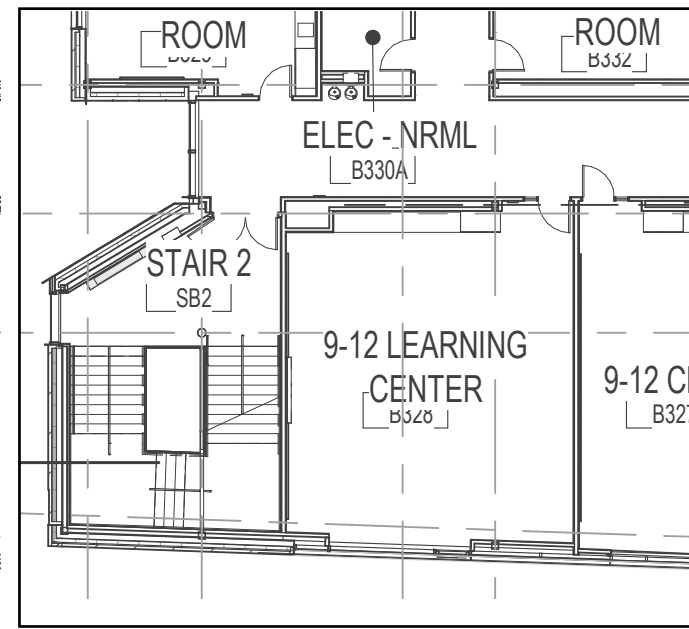




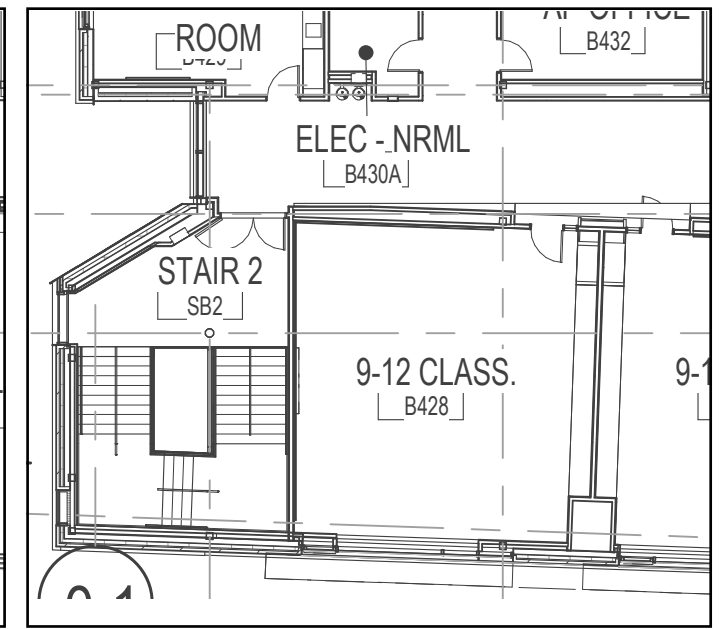
LEVEL 01



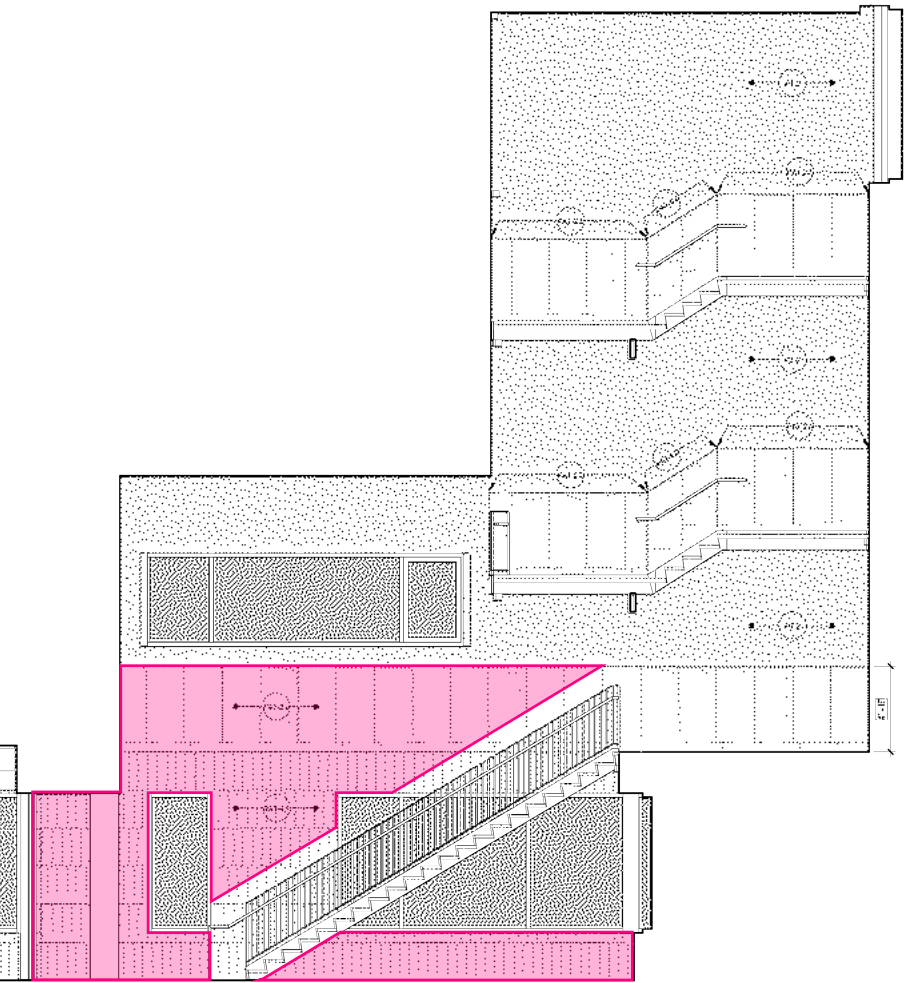
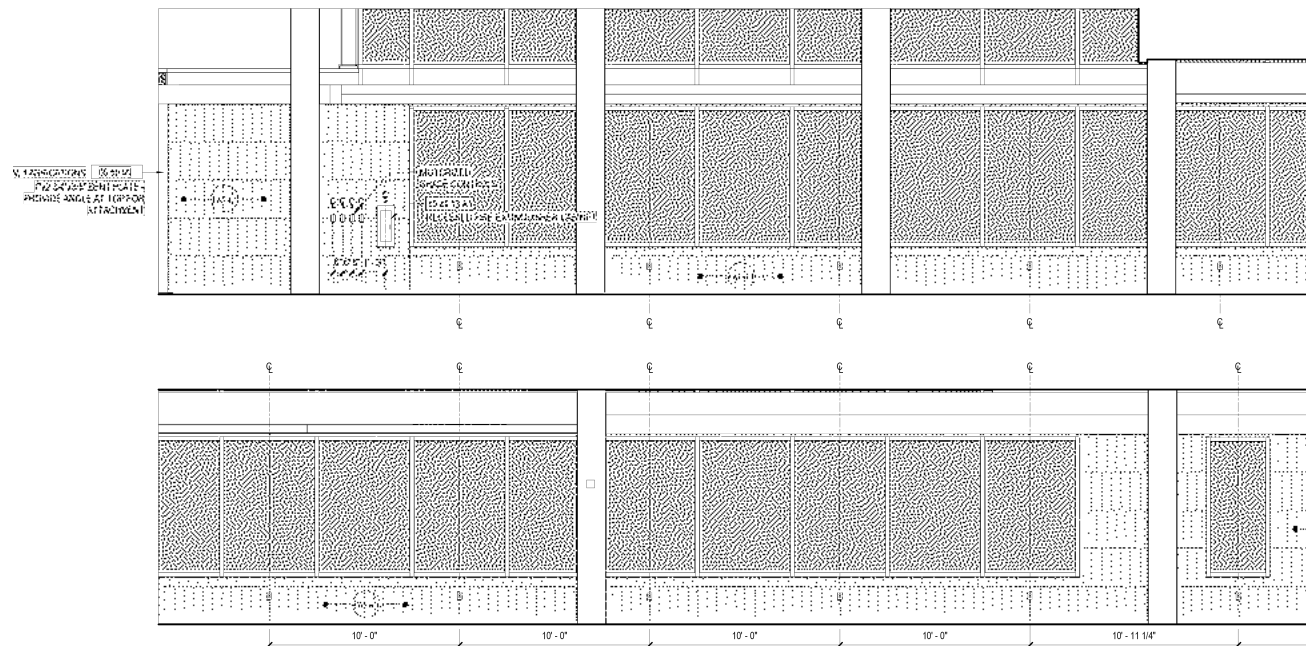
LEVEL 02



LEVEL 03



LEVEL 04

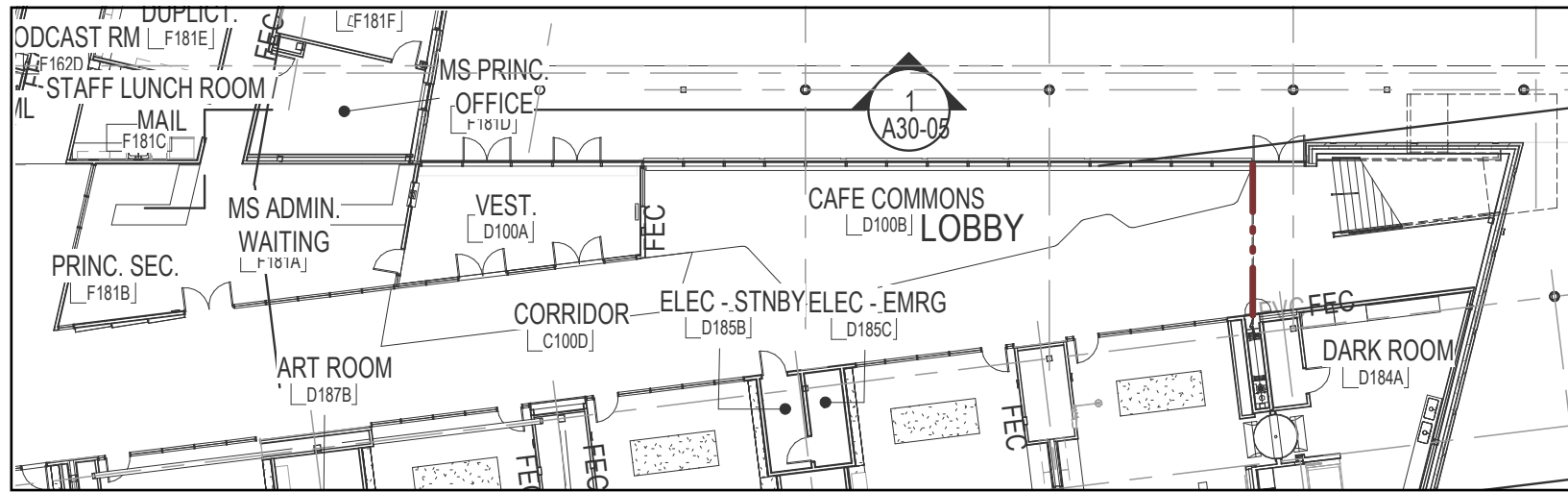


TILE ADDED

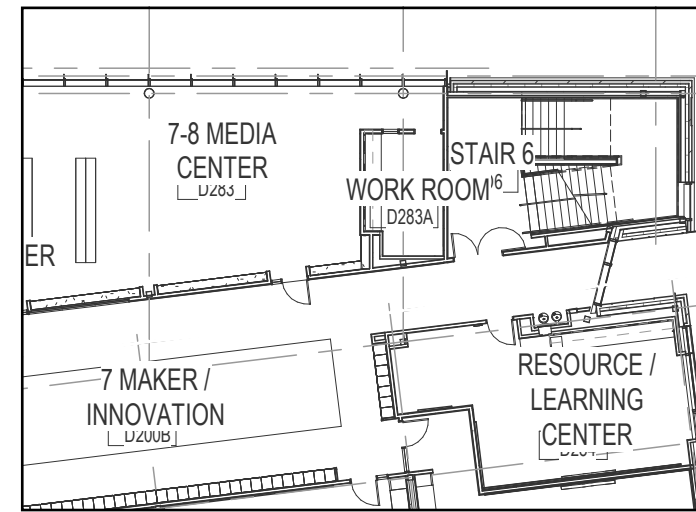
Stair 2 - HS Stair - with Tile  
Belmont Middle and High School  
Perkins and Will



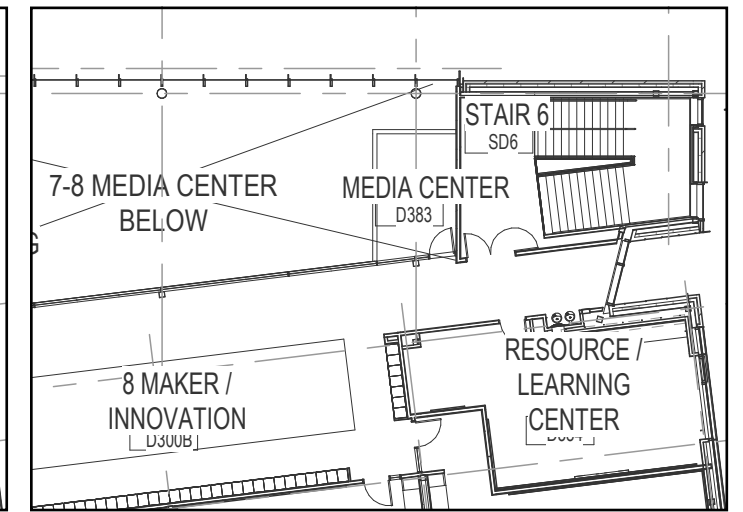




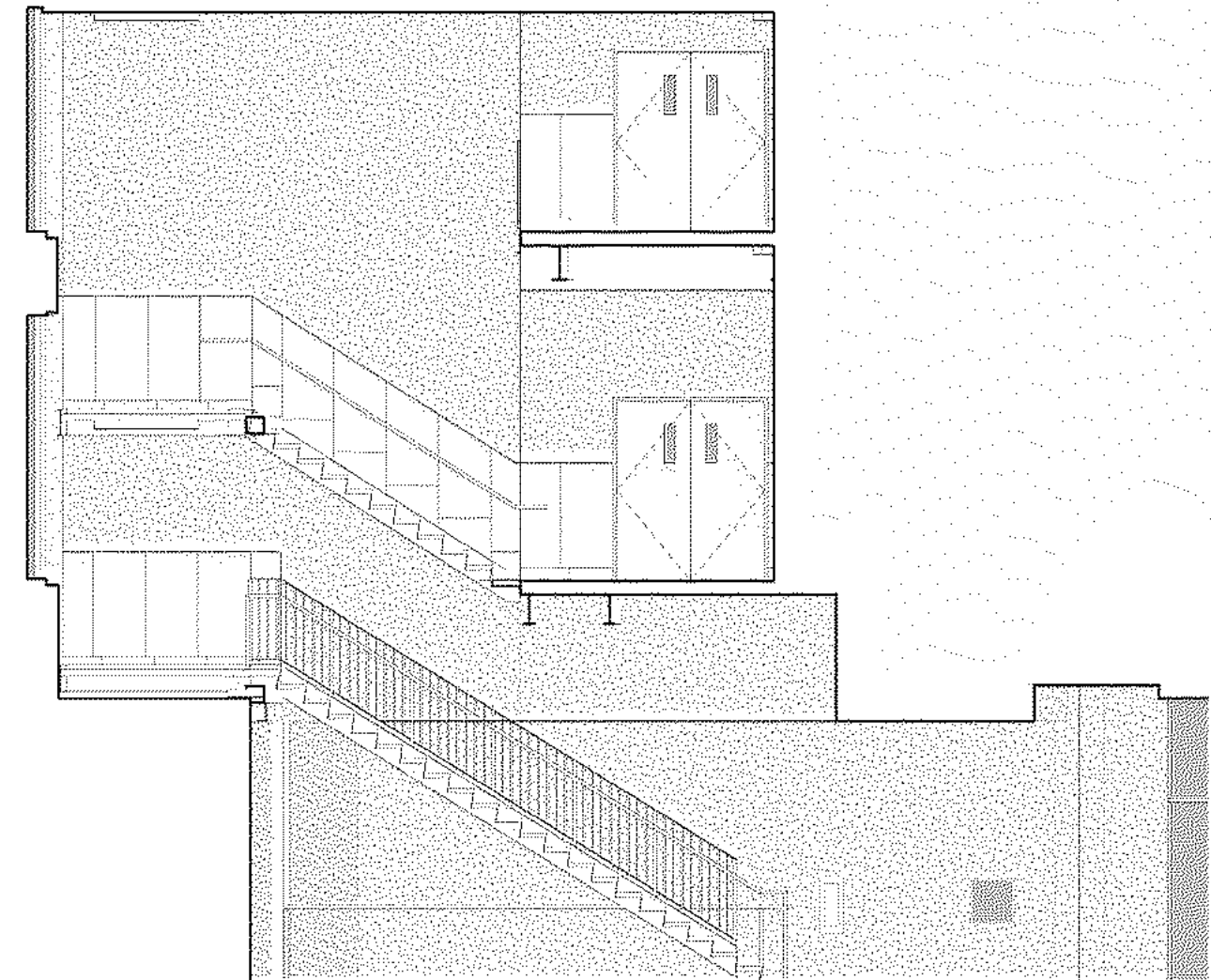
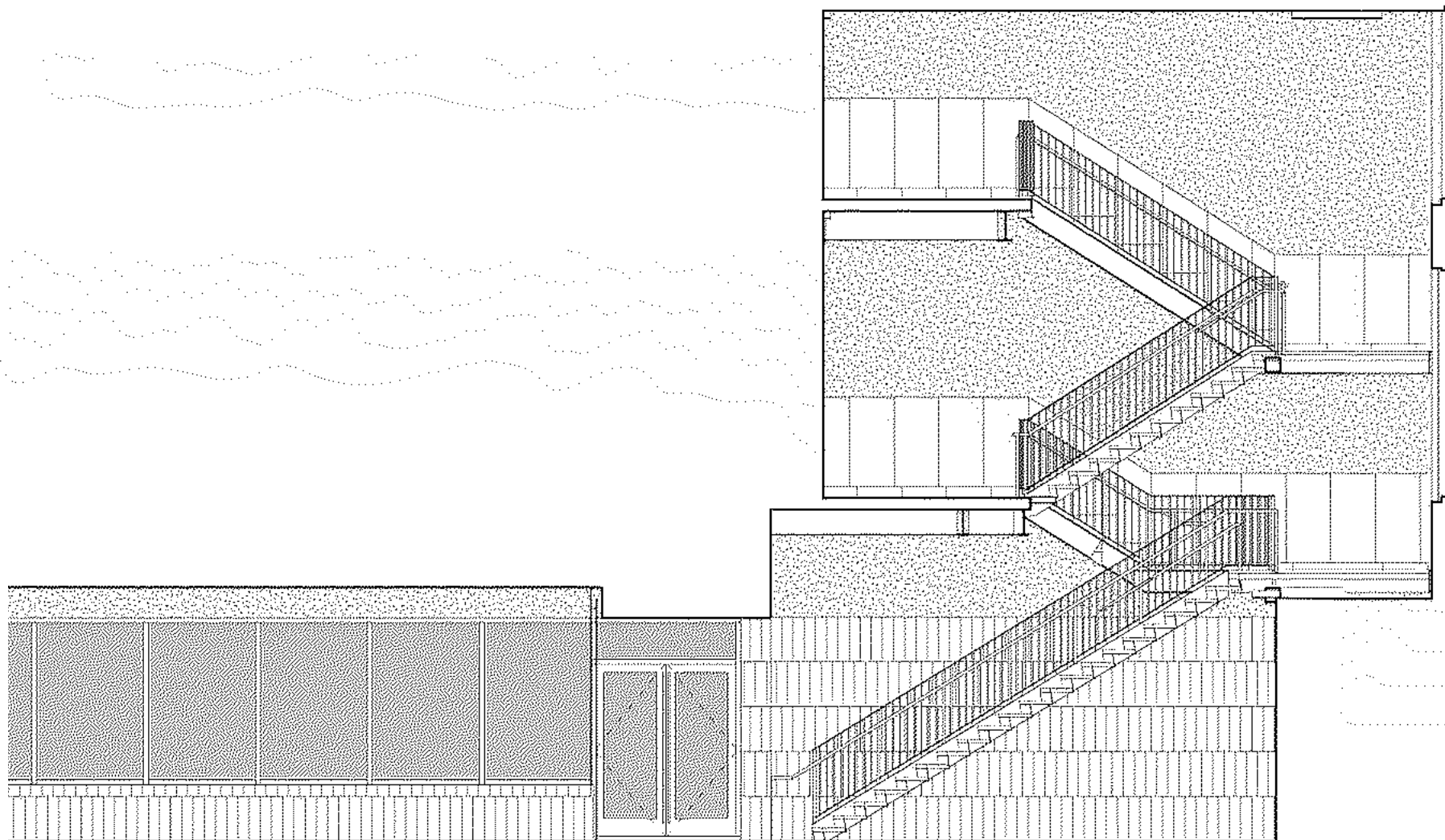
LEVEL 01

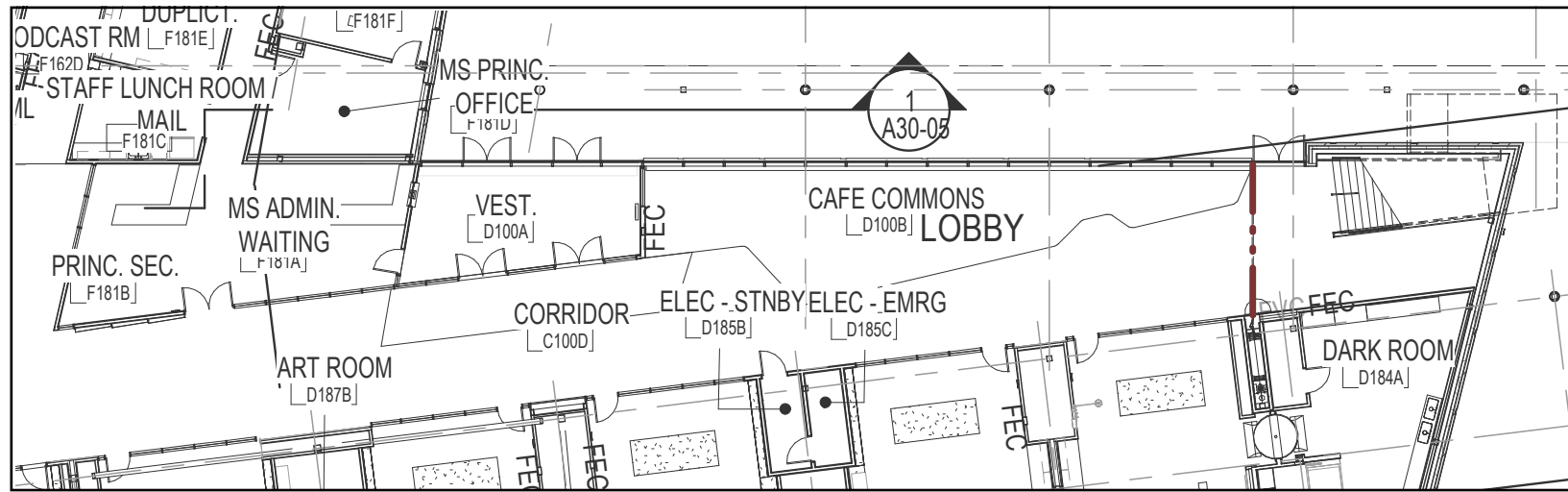


LEVEL 02

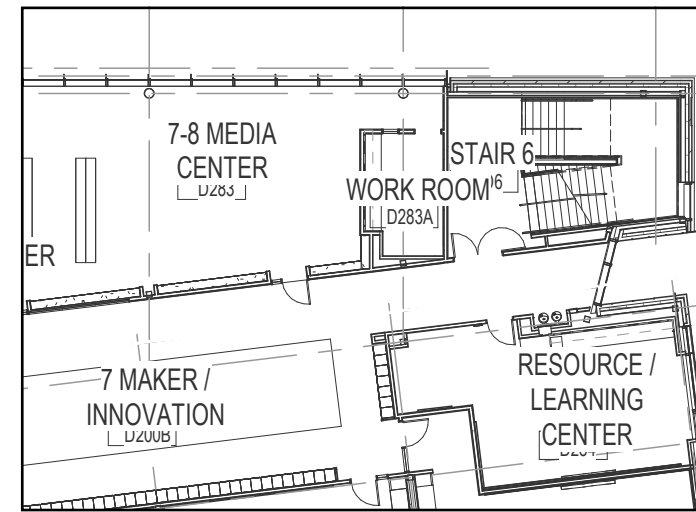


LEVEL 03

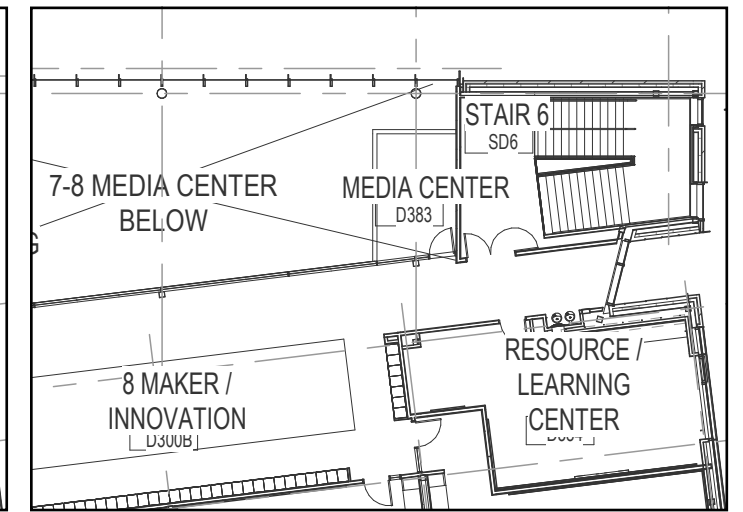




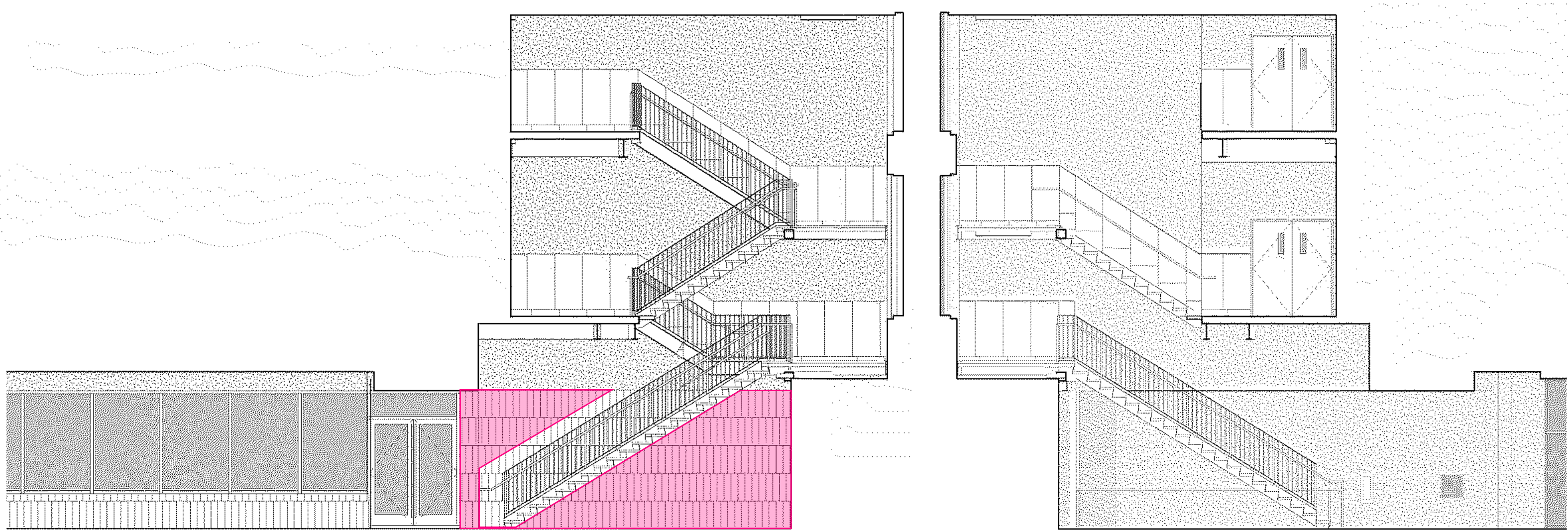
LEVEL 01



LEVEL 02

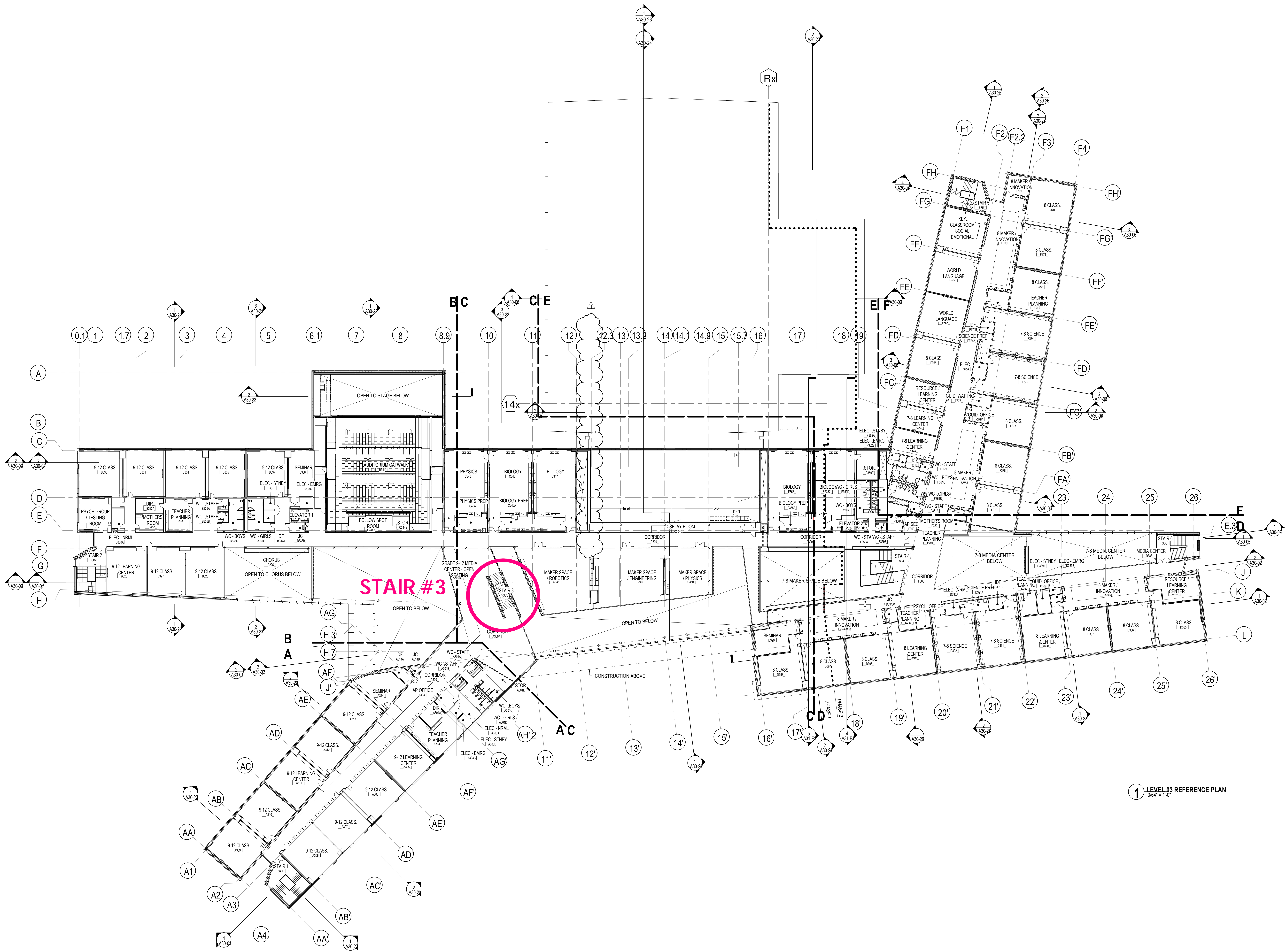


LEVEL 03



**TILE ADDED**

# TILE AT STAIR #3

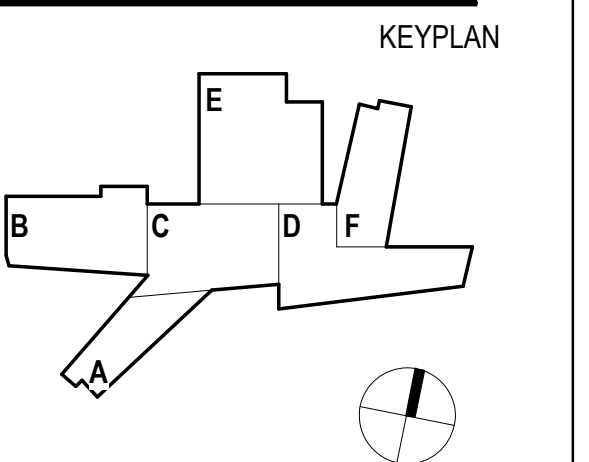


**STAIR #3**

1 LEVEL 03 REFERENCE PLAN  
3/64" = 1" 0"

PROJECT  
**BELMONT MIDDLE AND HIGH SCHOOL**  
221 CONCORD AVE.  
BELMONT, MA 02478

TOWN OF BELMONT



REVISIONS

SHEET REVISION HISTORY MAY BE TRUNCATED BELOW. FULL REVISION HISTORY AVAILABLE FROM ARCHITECT. (DO NOT REPRODUCE)

MARK	ISSUE	DATE
1	ASH-032	02.13.2020

CONFORMED SET  
02.06.2020

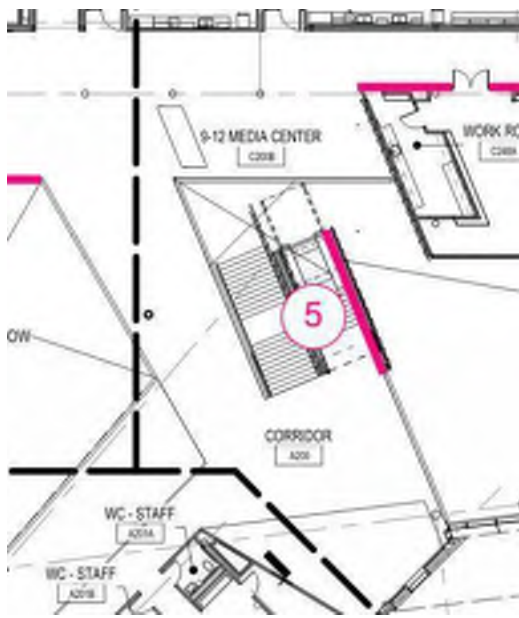
JOB NUMBER 153003.001  
DRAWN Author  
CHECKED Checker  
TITLE

LEVEL 03 REFERENCE PLAN

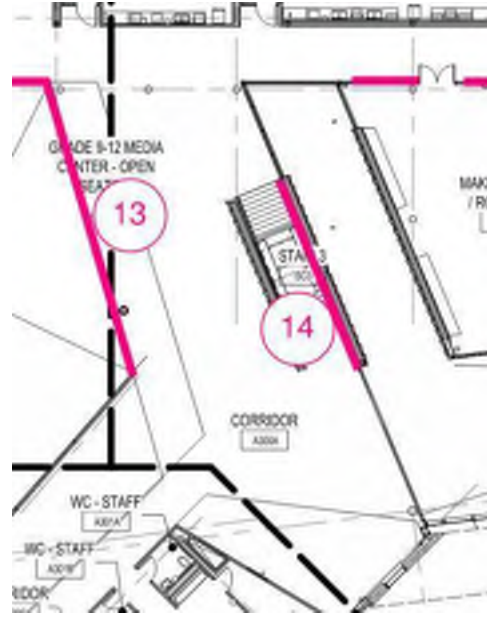
A10-03

**KEY PLAN**

# REFERENCE ELEVATION TO PRICE



LEVEL 2



LEVEL 3

**ELEVATION KEY**

GYPSUM BOARD, PAINTED

INTERIOR GLAZING  
(EXTERIOR GLAZING ALSO SHOWN ON THIS SHEET)

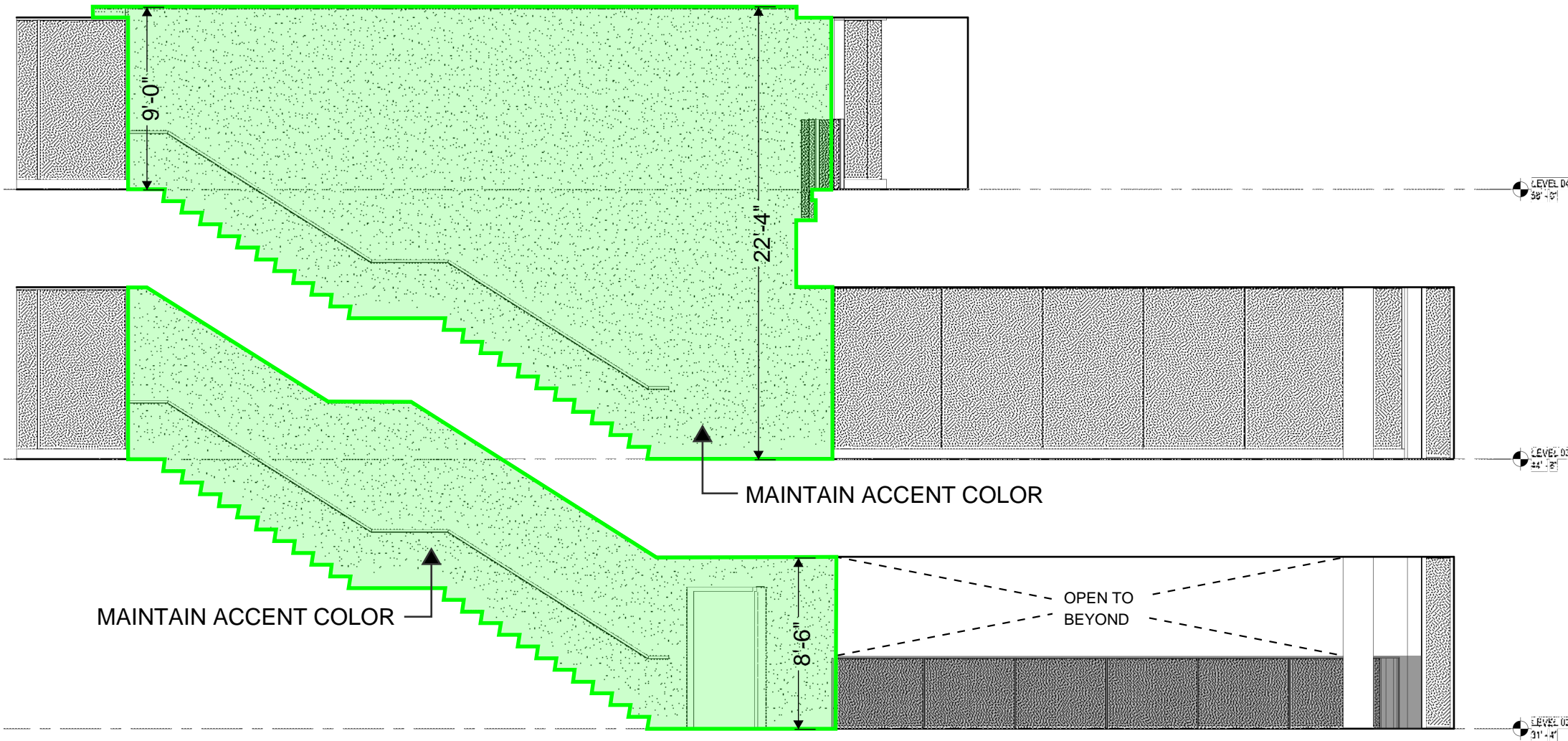
PERFORATED METAL RAIL

REMOVE TILE & REPLACE WITH PAINTED HIGH-IMPACT GWB

REPLACE STANDARD PAINT W/ 2-PART EPOXY PAINT PER SPEC SECTION 090007-3.10-G.2

REMOVE CURRENT FINISHES & REPLACE WITH 4'-6" HIGH TILE (PER NOTE 2 UNDER INTERIOR WALL TYPE D, SHEET A61-01; TYP FOR ALL TILE) (PAT-2 FOR LEVEL 1, PAT-1 FOR LEVELS 2-4; TILE COLORS TBD)

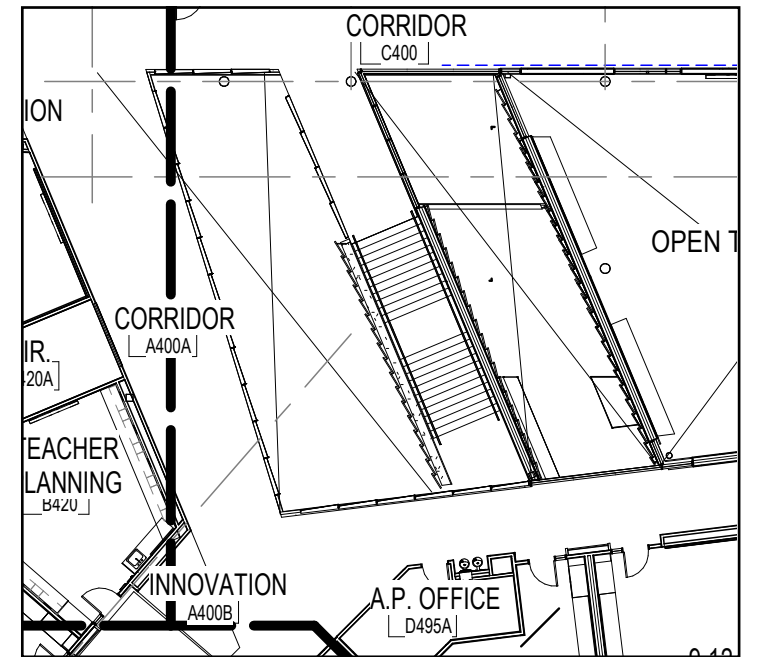
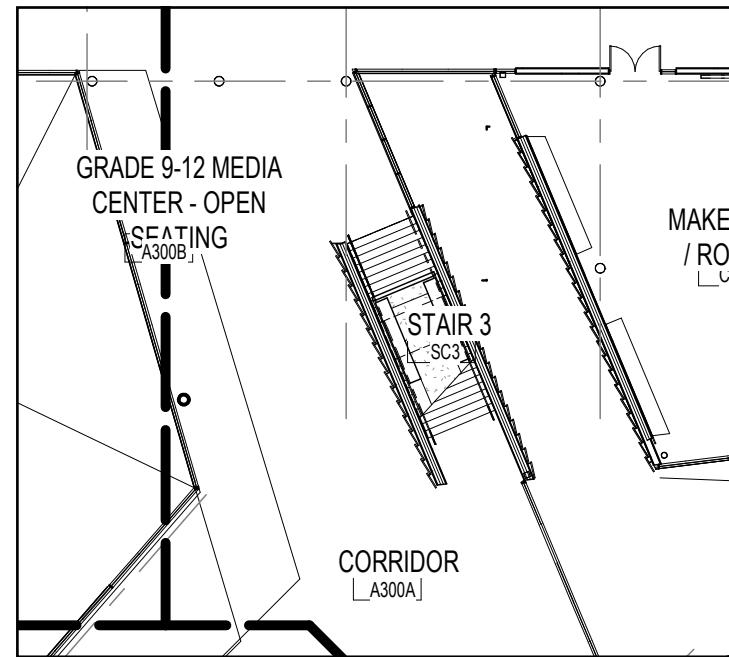
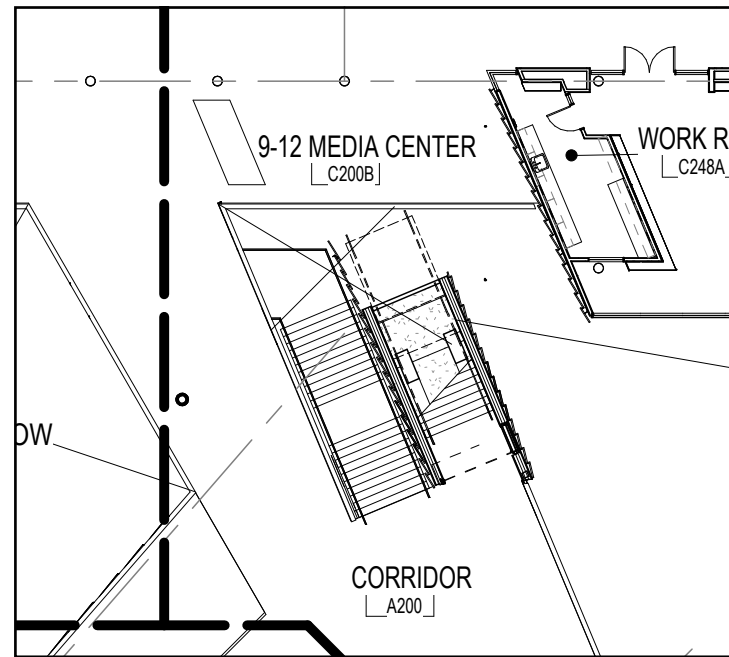
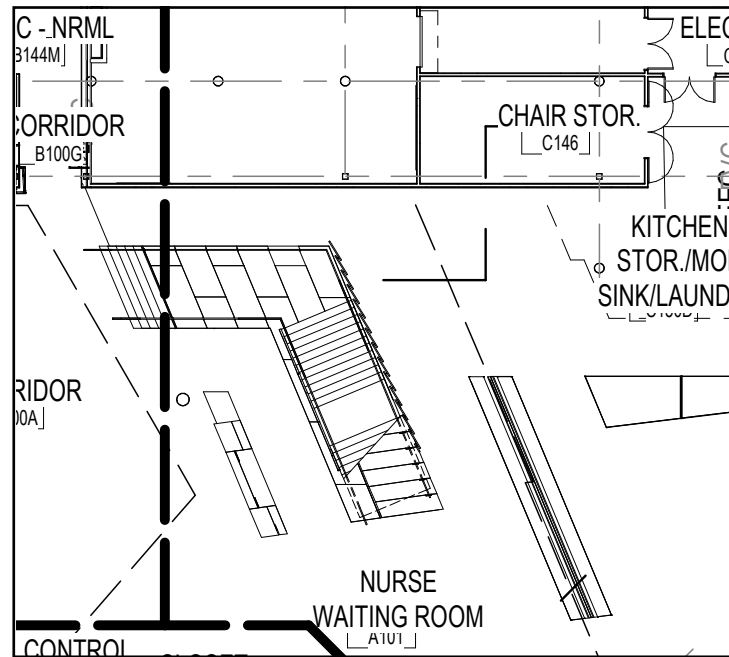
REMOVE CURRENT FINISHES & REPLACE WITH FULL-HEIGHT TILE ON MOISTURE RESISTANT GWB (PAT-4.1; TILE COLORS TBD)



14 A: SEE ELEVATION KEY

5 A: SEE ELEVATION KEY

**ELEVATIONS: HS STAIR EAST**

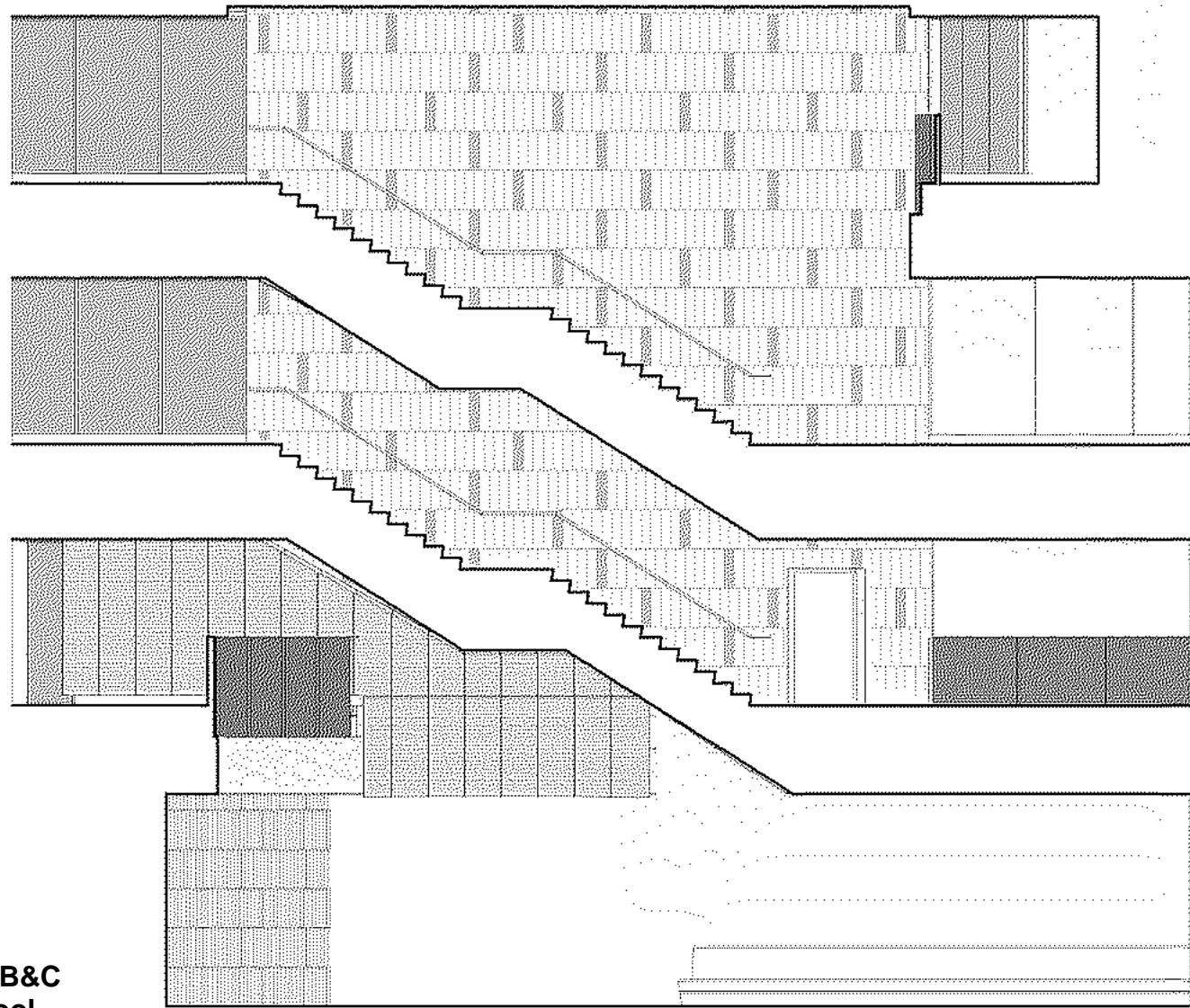


LEVEL 01

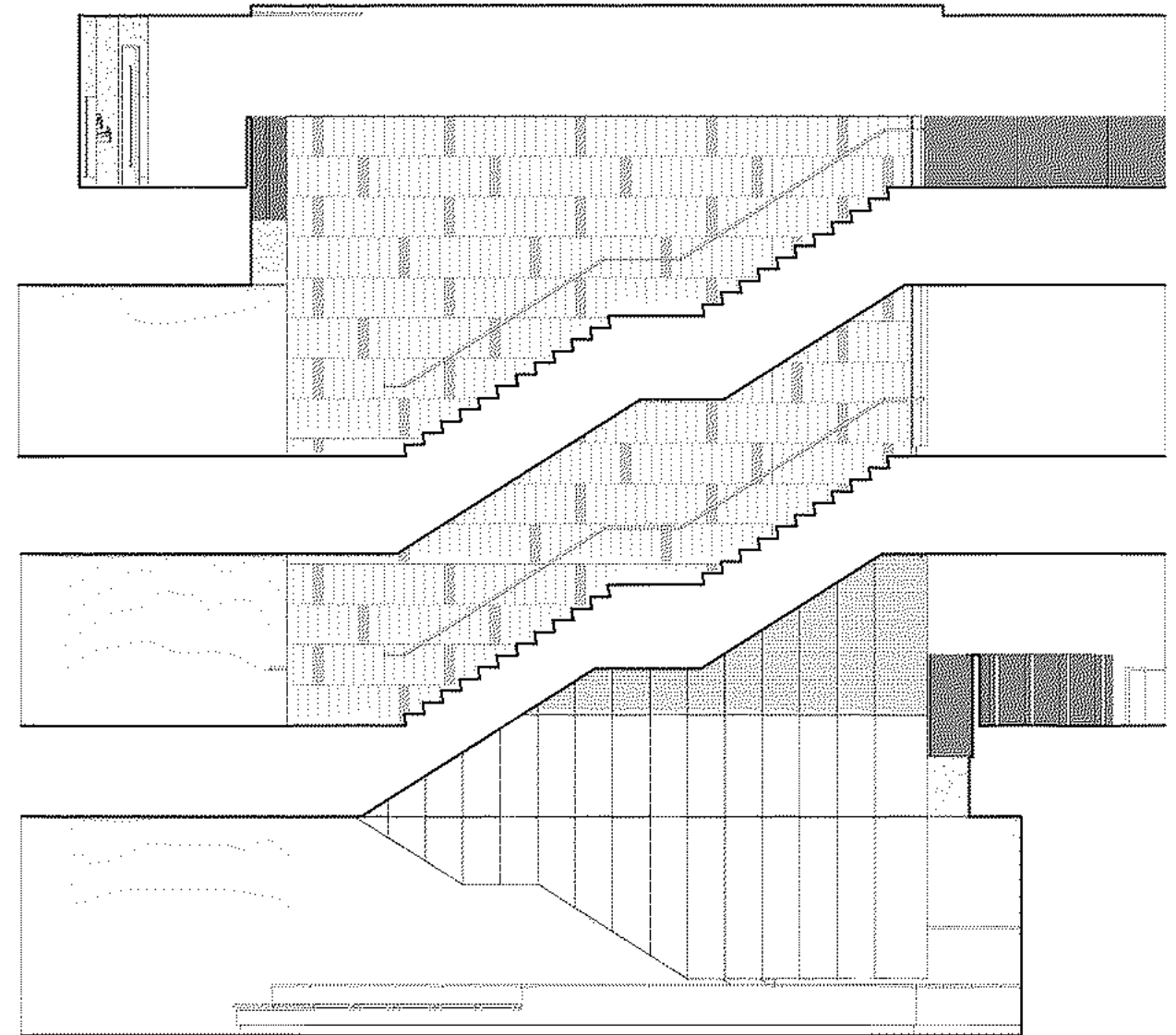
LEVEL 02

LEVEL 03

LEVEL 04

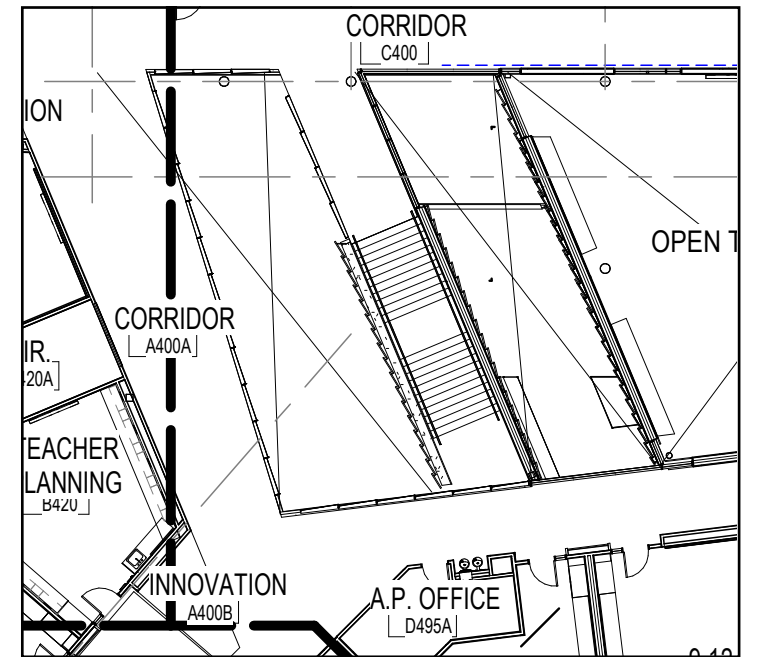
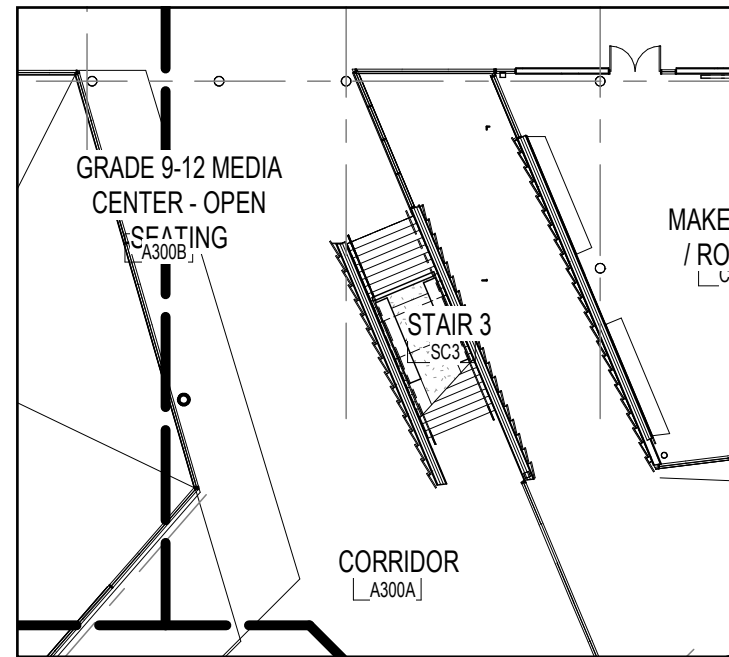
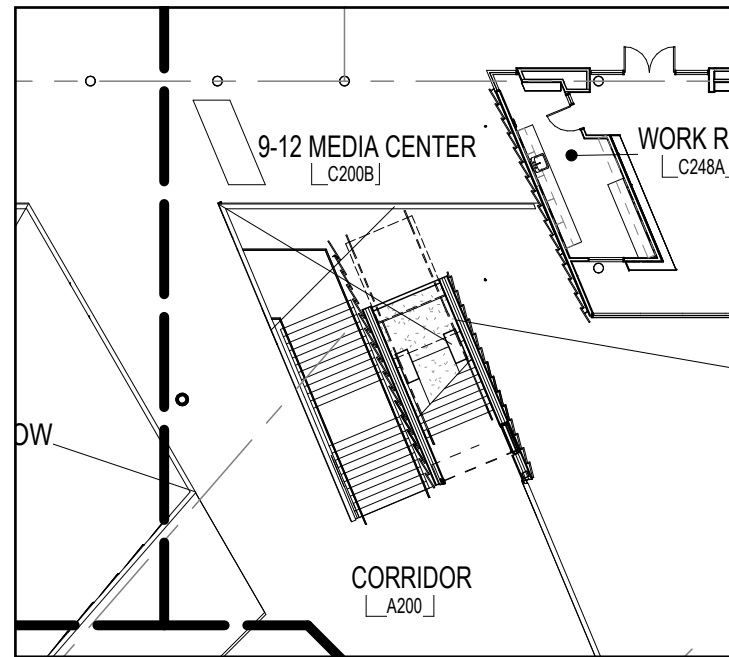
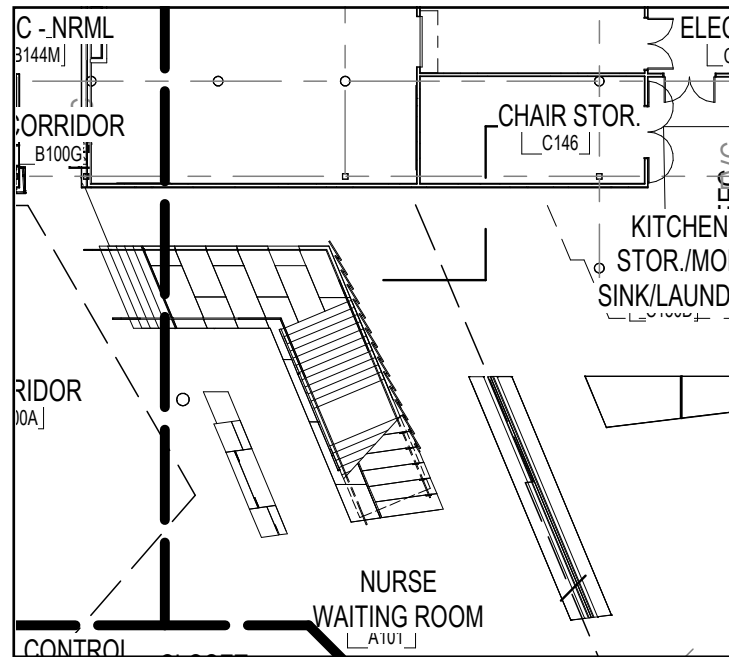


STAIR 3 - EAST ELEVATION

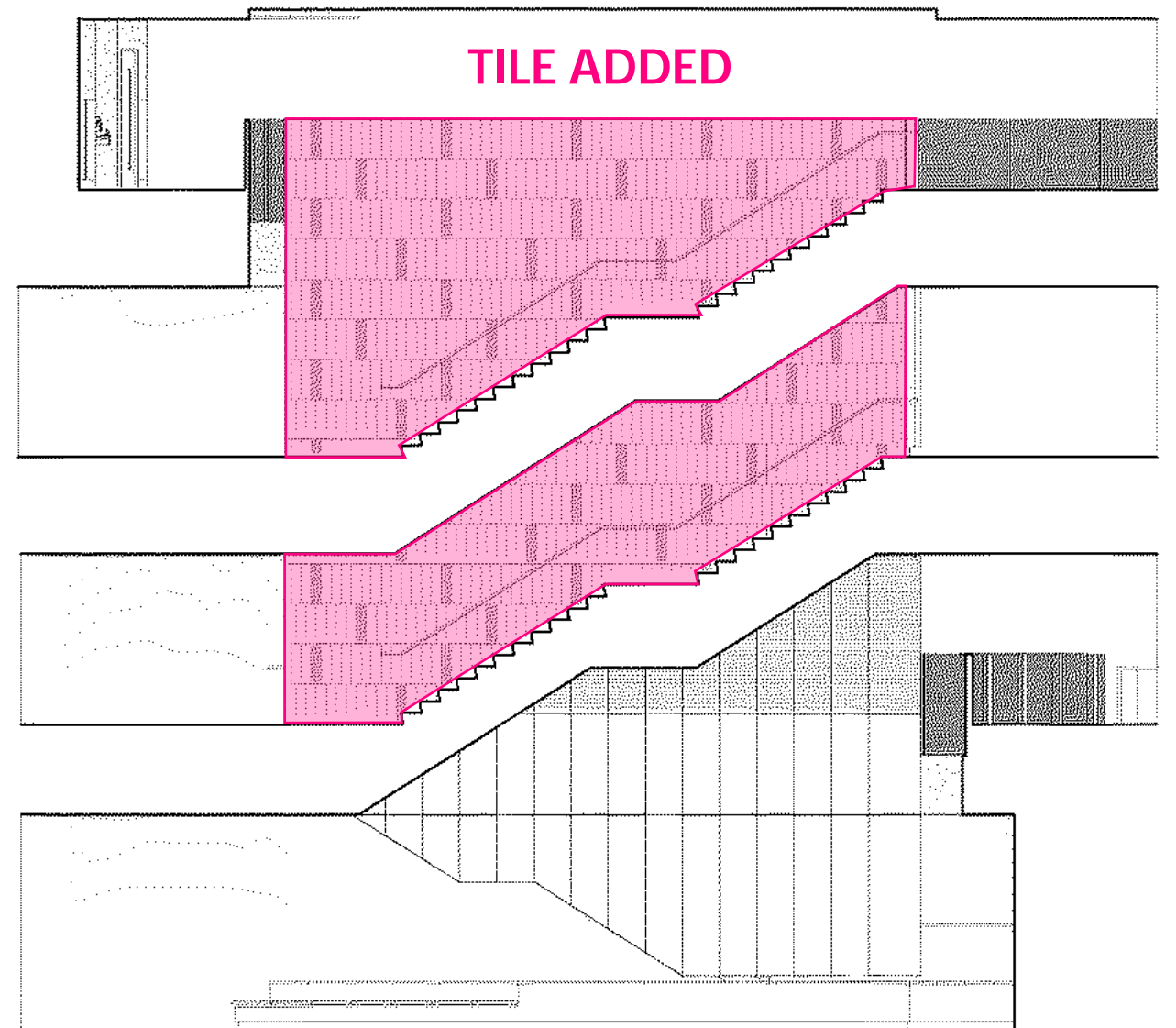
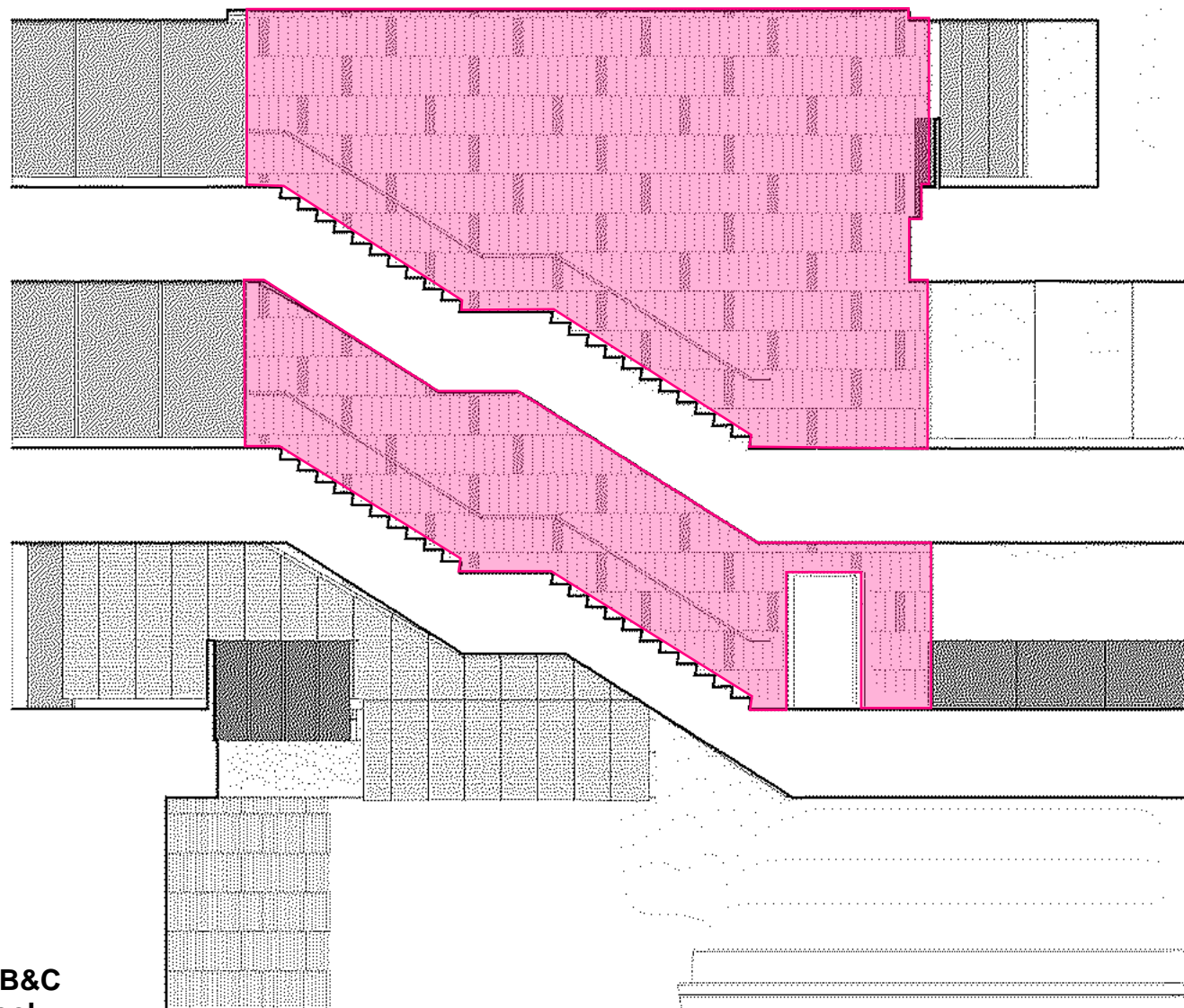


STAIR 3 - WEST ELEVATION

Stair 3 - HS Main Stair - Areas B&C  
 Belmont Middle and High School  
 Perkins and Will



TILE ADDED



TILE ADDED

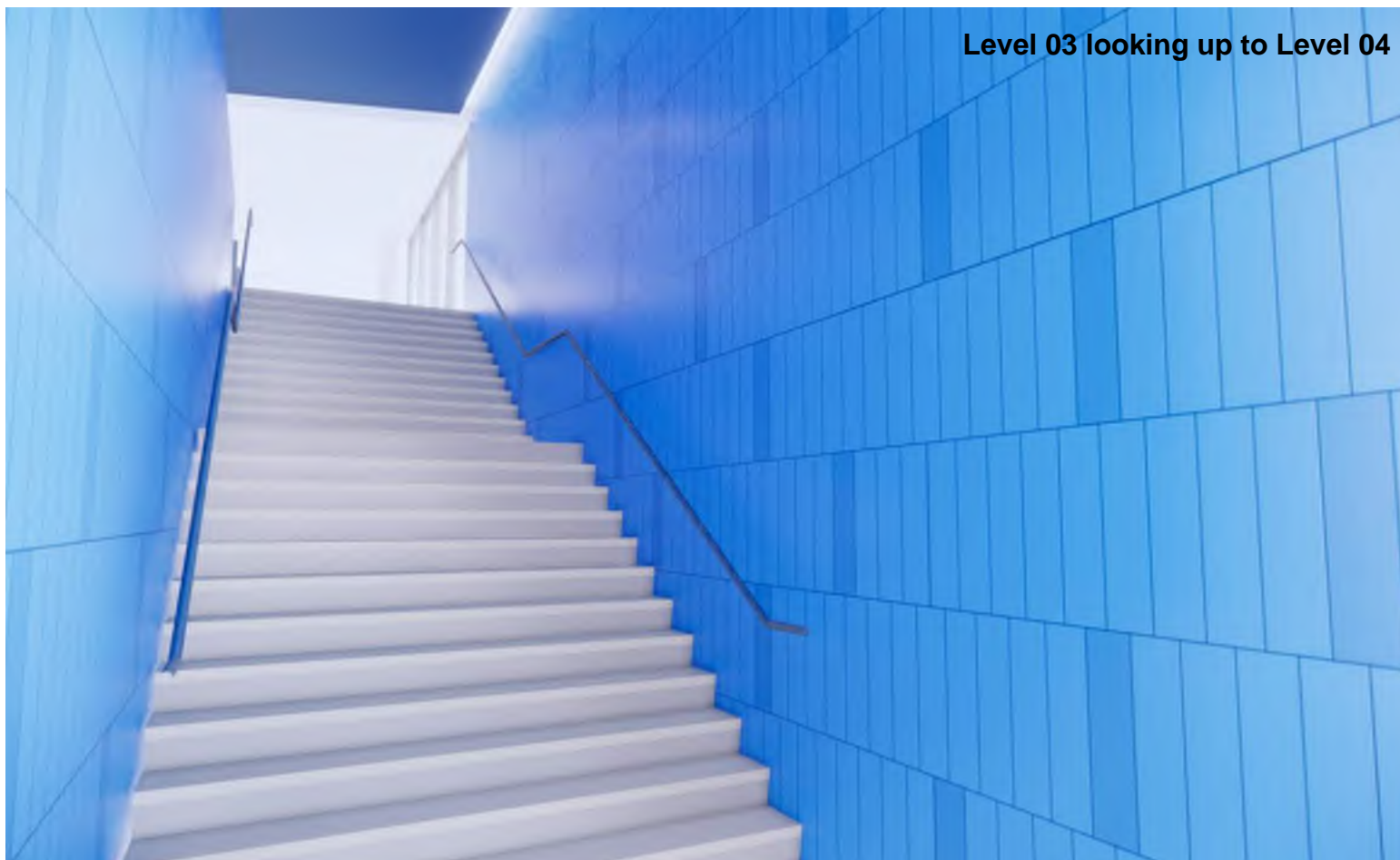
**Stair 3 - HS Main Stair - with Tile  
Belmont Middle and High School  
Perkins and Will**



**Level 02**



**Level 04 looking at top of wall**



**Level 03 looking up to Level 04**



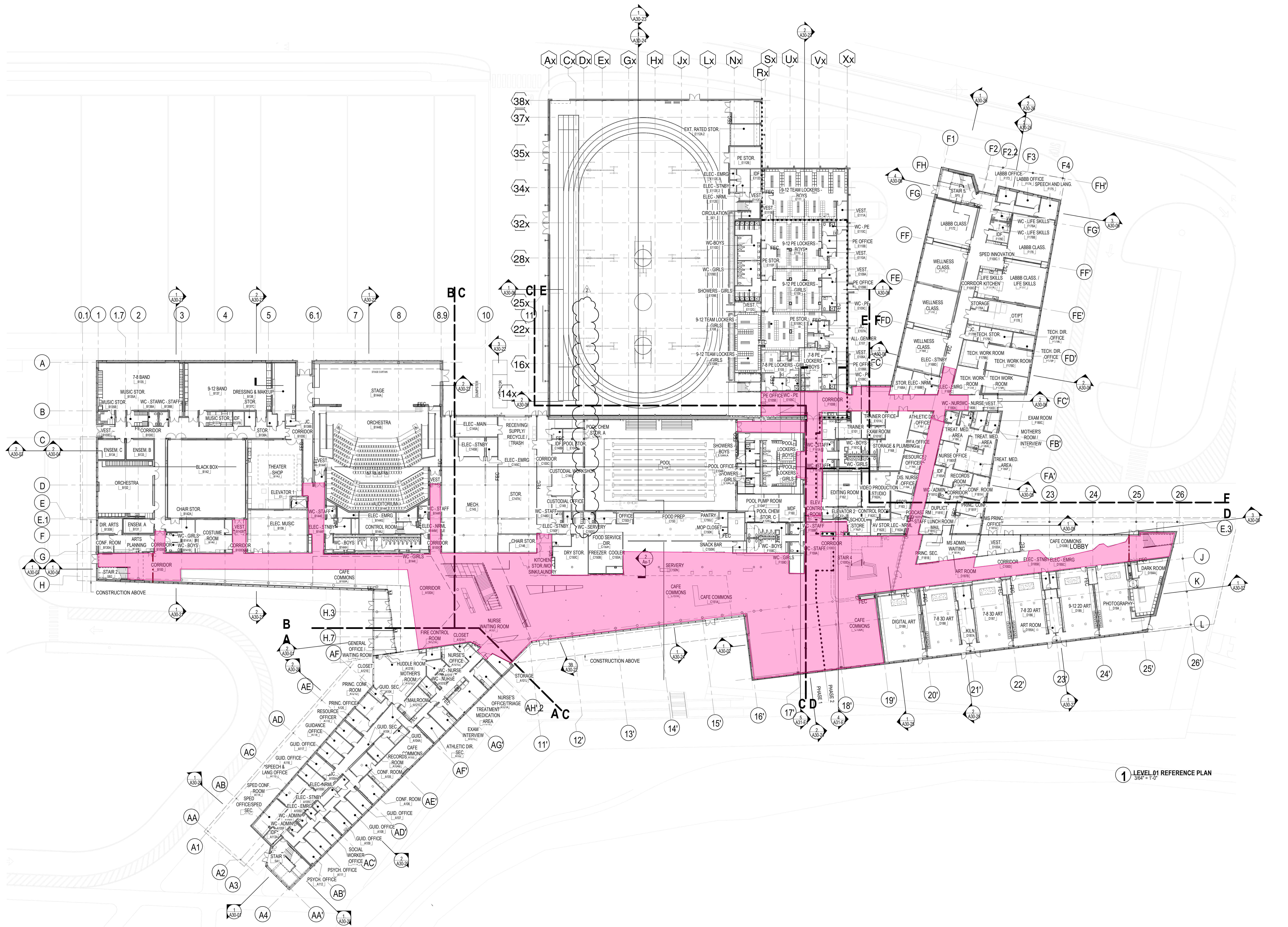
**Level 04 looking down to Level 03**



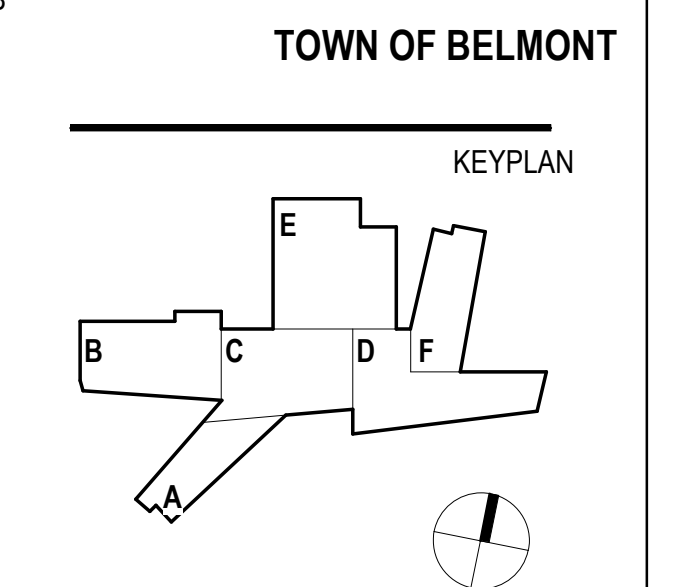
Stair 3 - HS Main Stair - with Tile  
Belmont Middle and High School  
Perkins and Will



# TILE AT GROUND FLOOR



PROJECT  
**BELMONT MIDDLE AND HIGH SCHOOL**  
 221 CONCORD AVE.  
 BELMONT, MA 02478



REVISIONS

MARK	ISSUE	DATE
2	ASH-02	02/13/2020
1	EBP - ADDENDUM #1	03/20/19

CONFORMED SET  
 02.06.2020  
 JOB NUMBER 153003.001  
 DRAWN  
 CHECKED  
 TITLE

LEVEL 01 REFERENCE PLAN

A10-01



**BASIS OF DESIGN TILE**



**BASIS OF DESIGN TILE**

<b>Cost</b>	<b>Scope of Work</b>	<b>Notes</b>
\$20,000	Addition of Tile at Stair #2 & #6	
\$25,000	Use of Basis of Design Tile at Ground Floor	
\$145,000	Addition of Tile at Corridors L2-L4	
<b>\$50,000</b>	<b>Addition of Tile at Stair #3</b>	<b>Awaiting Approval from Building Committee</b>
\$240,000	Total	