

# **BELMONT MIDDLE AND HIGH SCHOOL BUILDING COMMITTEE**

SEPTEMBER 26, 2019

**Perkins&Will**

# **AGENDA**

- **UPDATED VE COST SUMMARY**
- **UPDATED EXTERIOR VE ITEMS**
- **UPDATED INTERIOR VE ITEMS**
- **UPDATED SITE VE ITEMS**
- **DISCUSSION/RECOMMENDATION**

# **VE COST SUMMARY**

# **REVIEW EXTERIOR VE ITEMS**

- 1. REMOVE MIDDLE SCHOOL CANOPY**
- 2. REDUCE CURTAINWALL AT HIGH SCHOOL ENTRY**
- 3. REMOVE POND TERRACE CANOPY**
- 4. REDUCE OR ELIMINATE SKYLIGHTS**

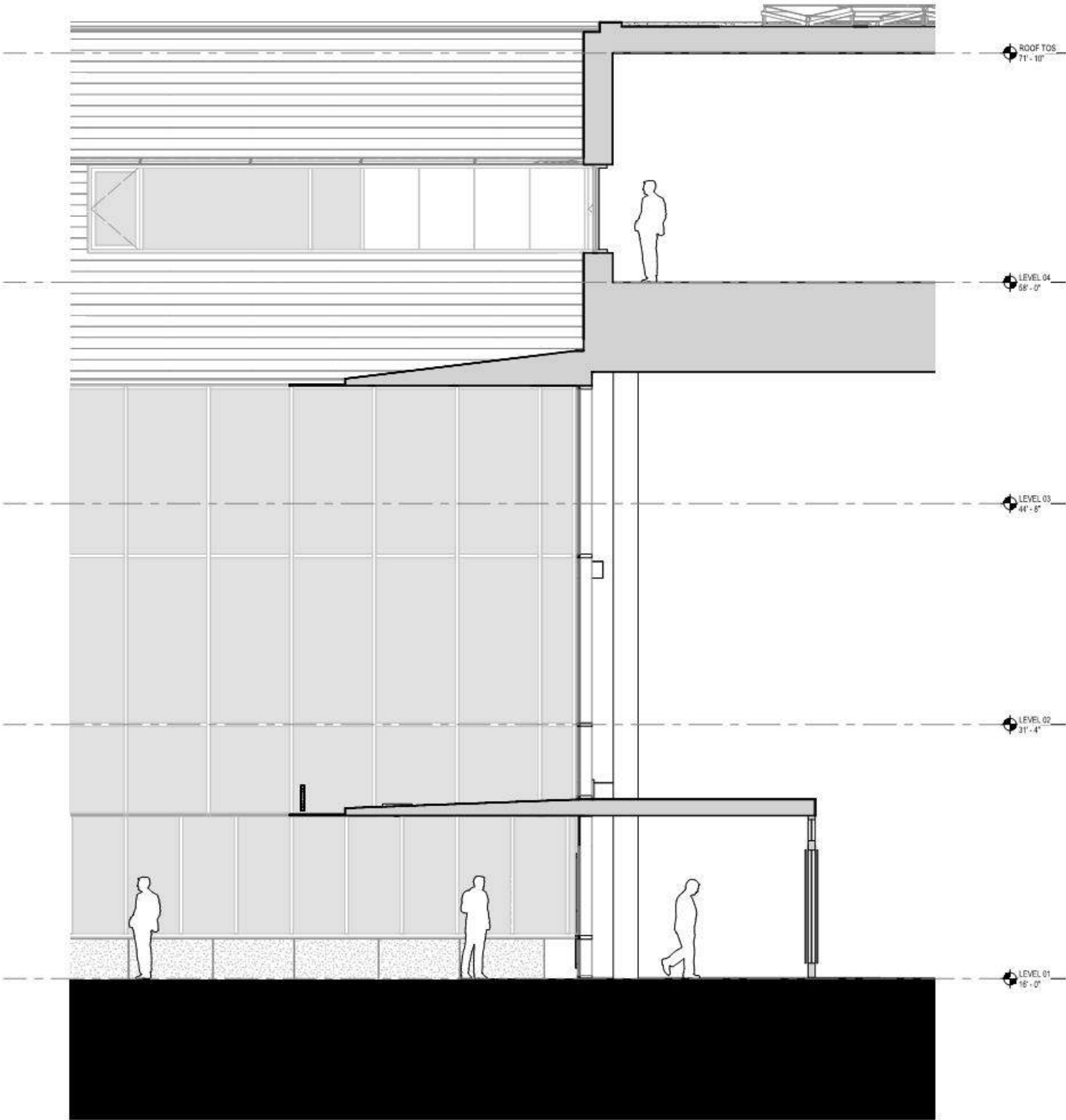
# EXTERIOR DESIGN - HIGH SCHOOL ENTRANCE

VE PROPOSAL



# EXTERIOR DESIGN - HIGH SCHOOL ENTRANCE

## VE PROPOSAL SECTION

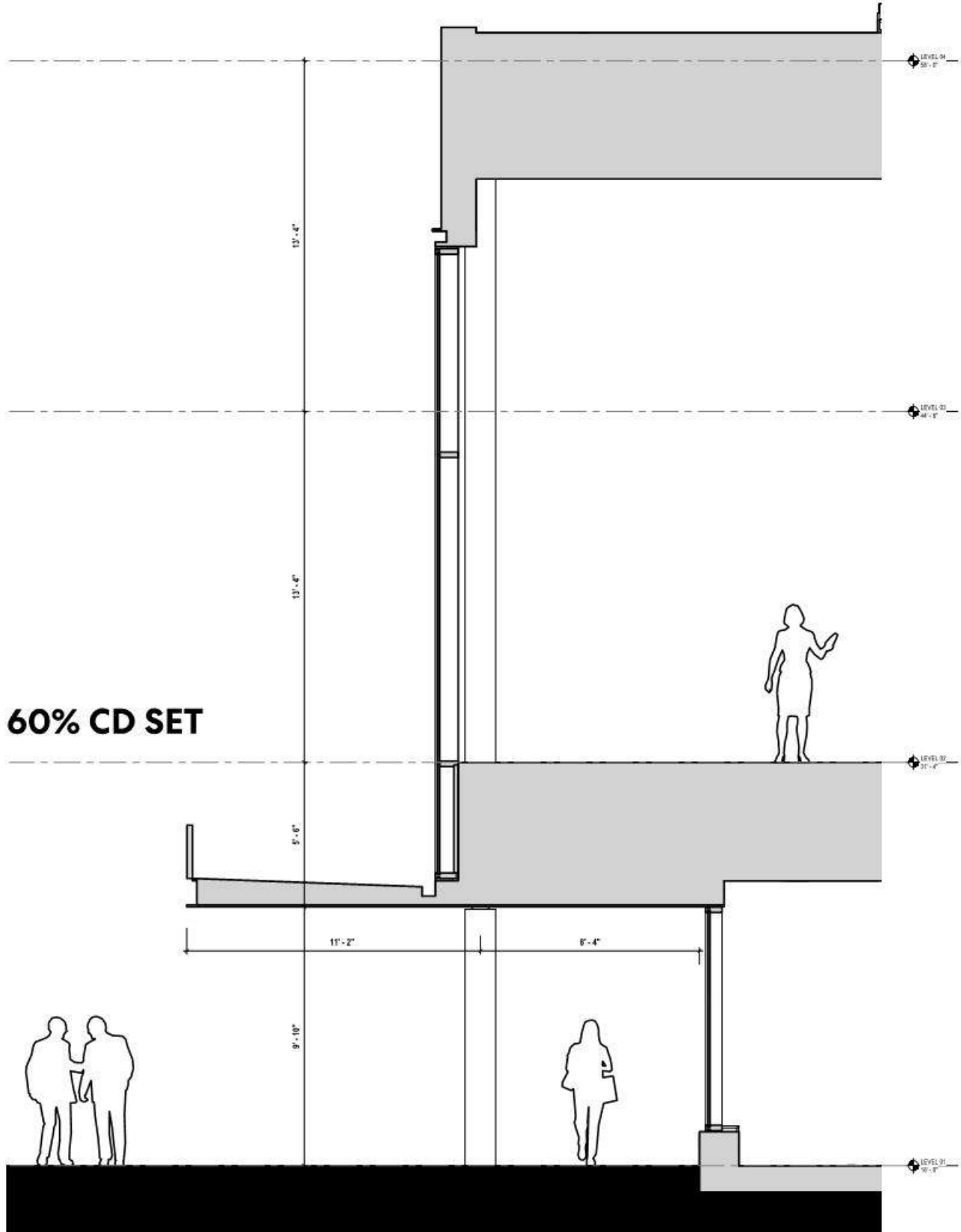


# EXTERIOR DESIGN - MIDDLE SCHOOL ENTRANCE

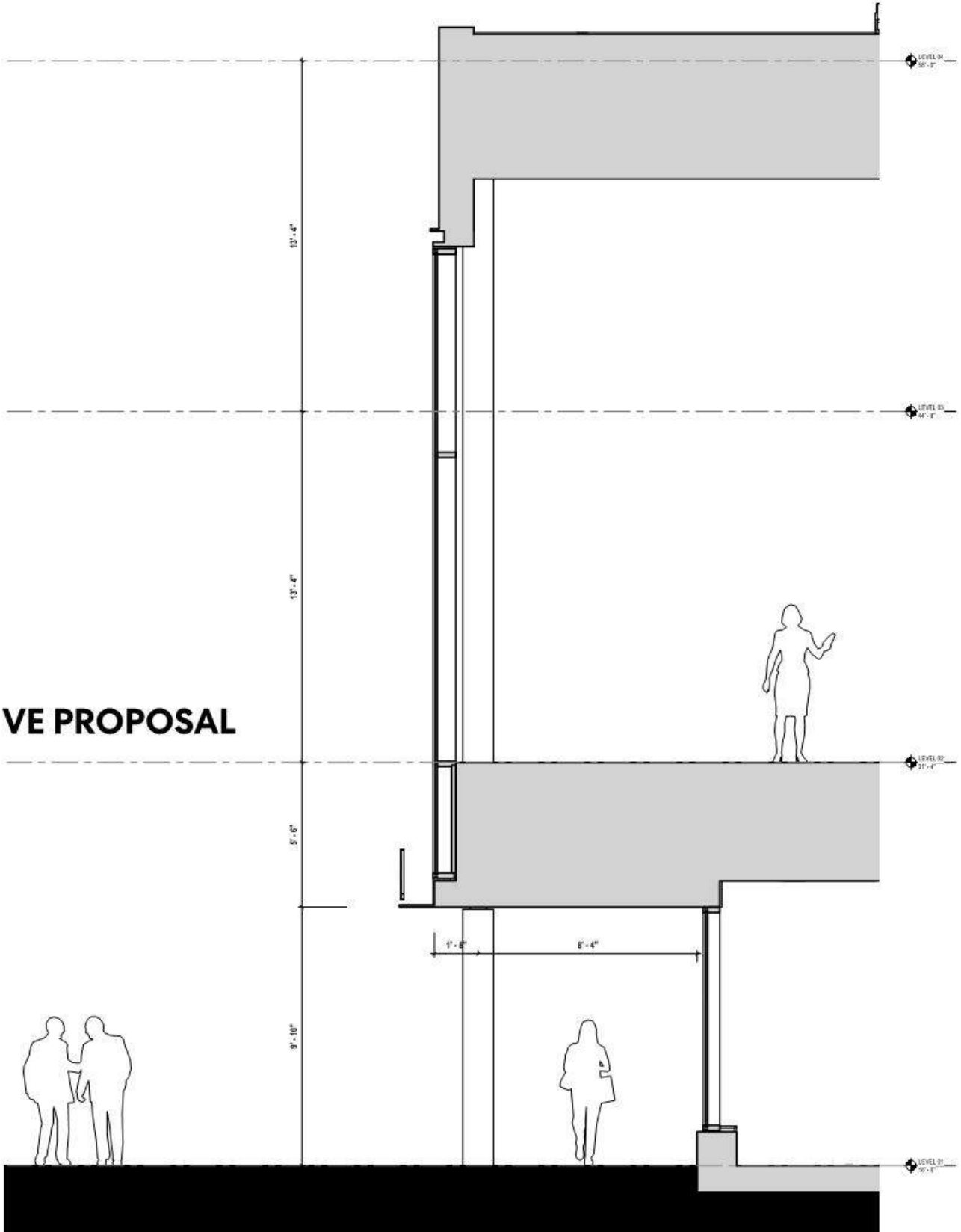
VE PROPOSAL



# EXTERIOR DESIGN - MIDDLE SCHOOL ENTRANCE



# SECTION COMPARISON





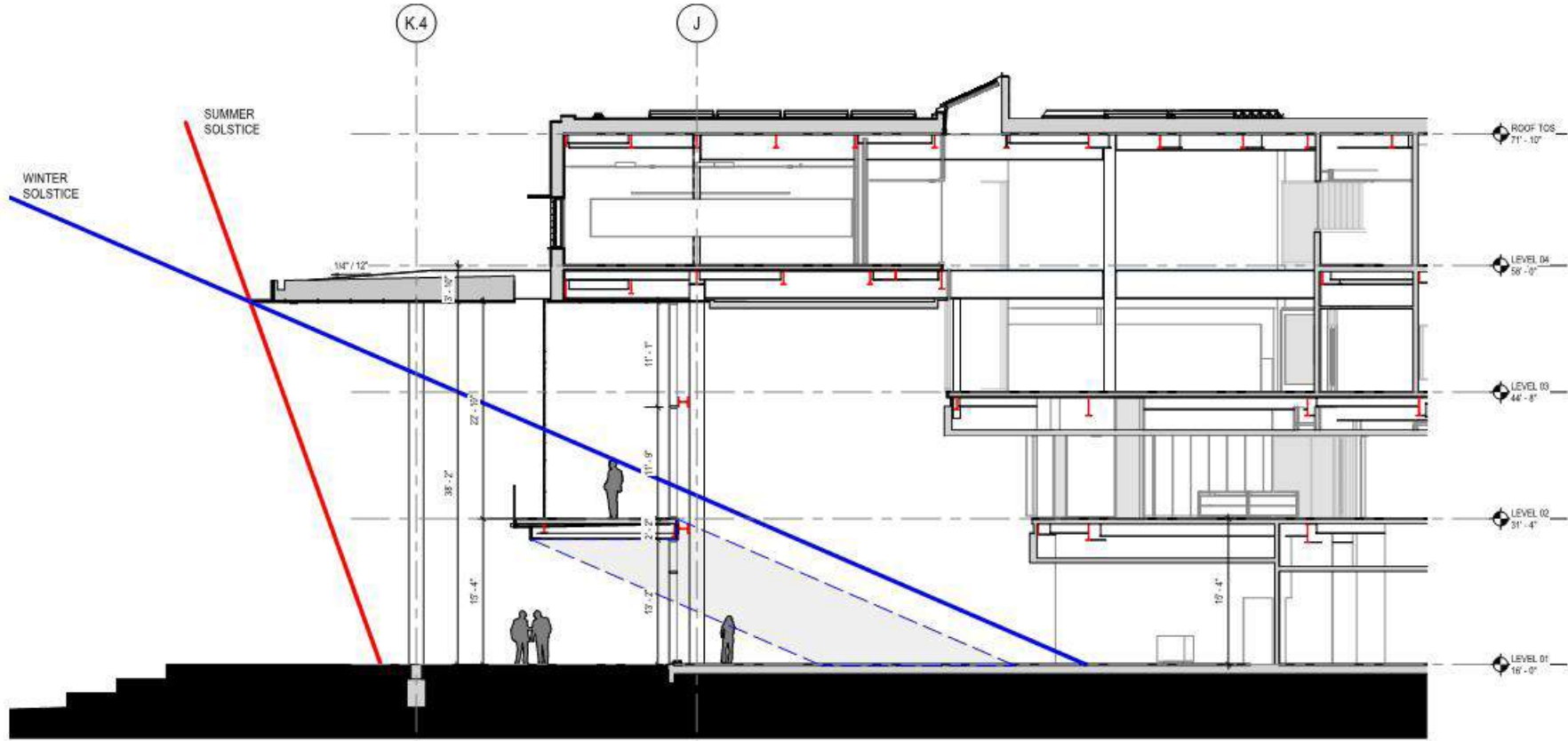
# EXTERIOR DESIGN - POND TERRACE FACADE

VE PROPOSAL

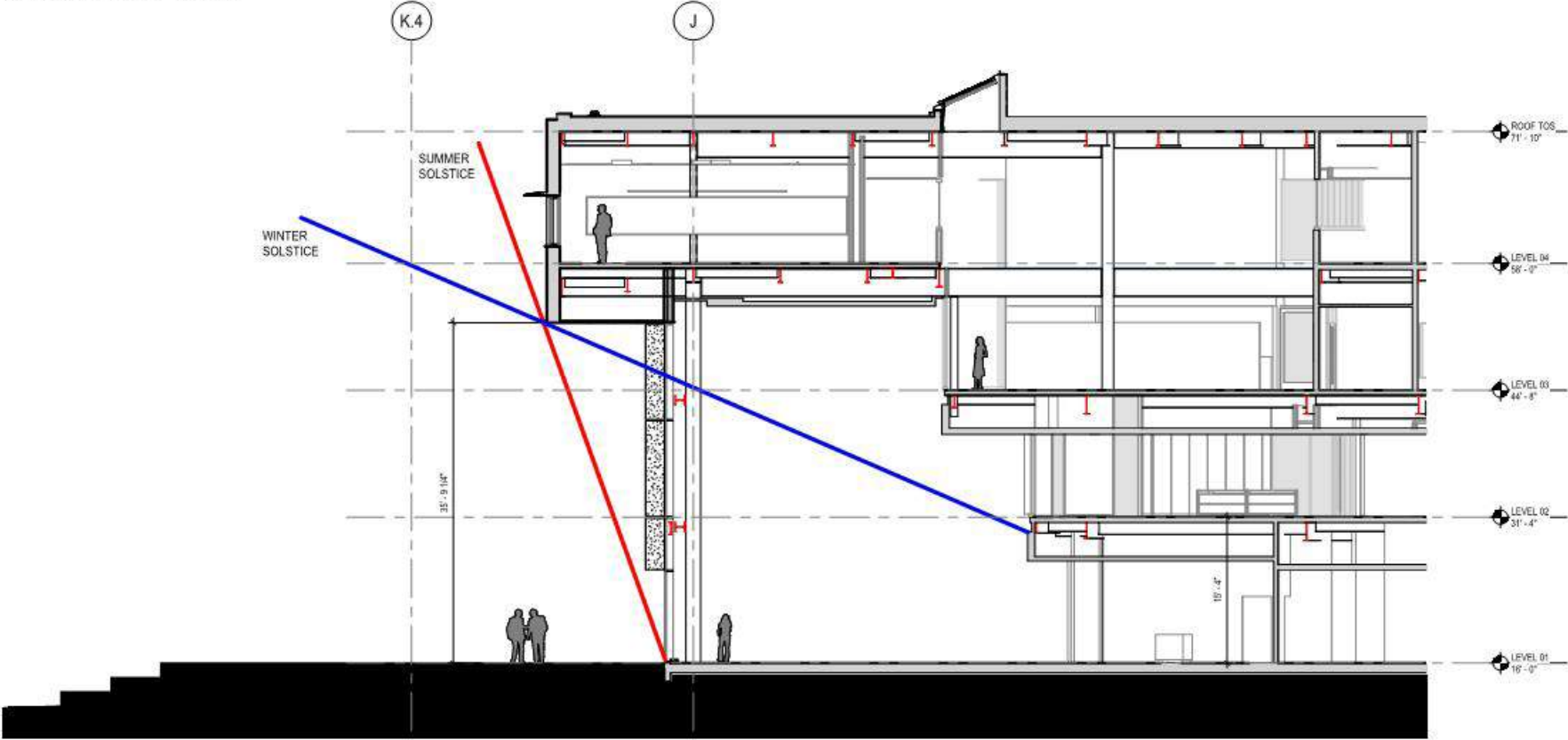


# EXTERIOR DESIGN - POND TERRACE FACADE

## SHADING COMPARISON



60% CD SET

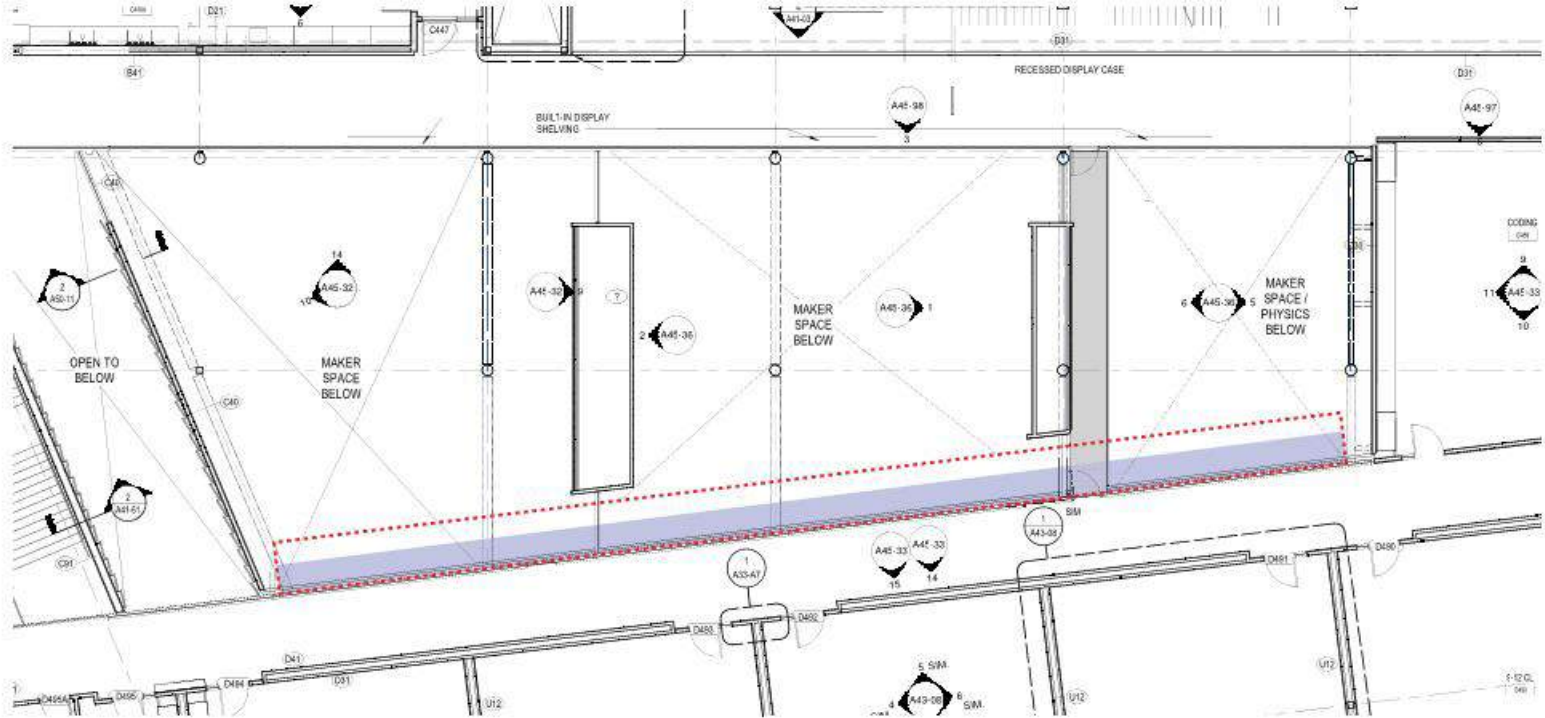


VE PROPOSAL

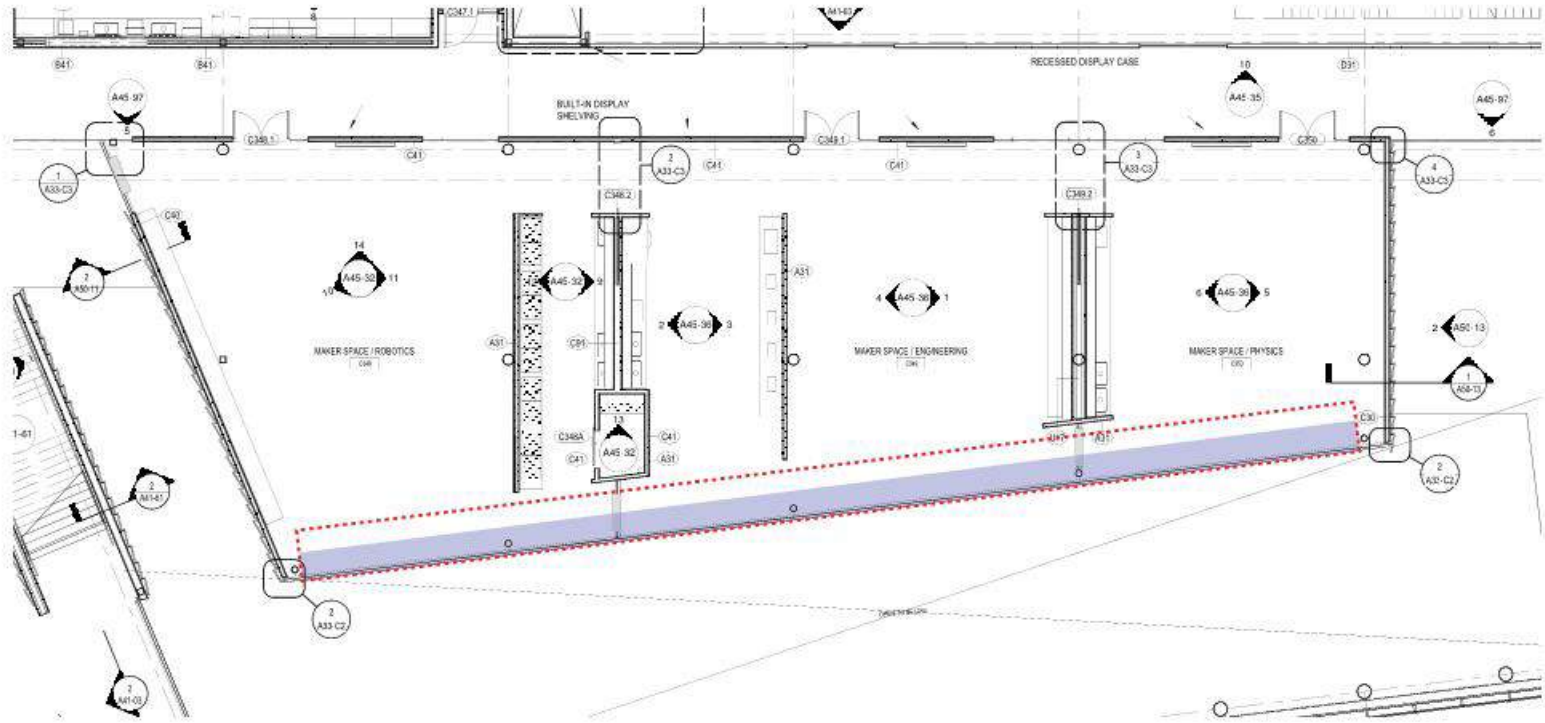
# EXTERIOR DESIGN - HS SKYLIGHT

 60% CD SET SKYLIGHT  
5'-6" WIDE

 VE REDUCTION SKYLIGHT  
3'-0" WIDE



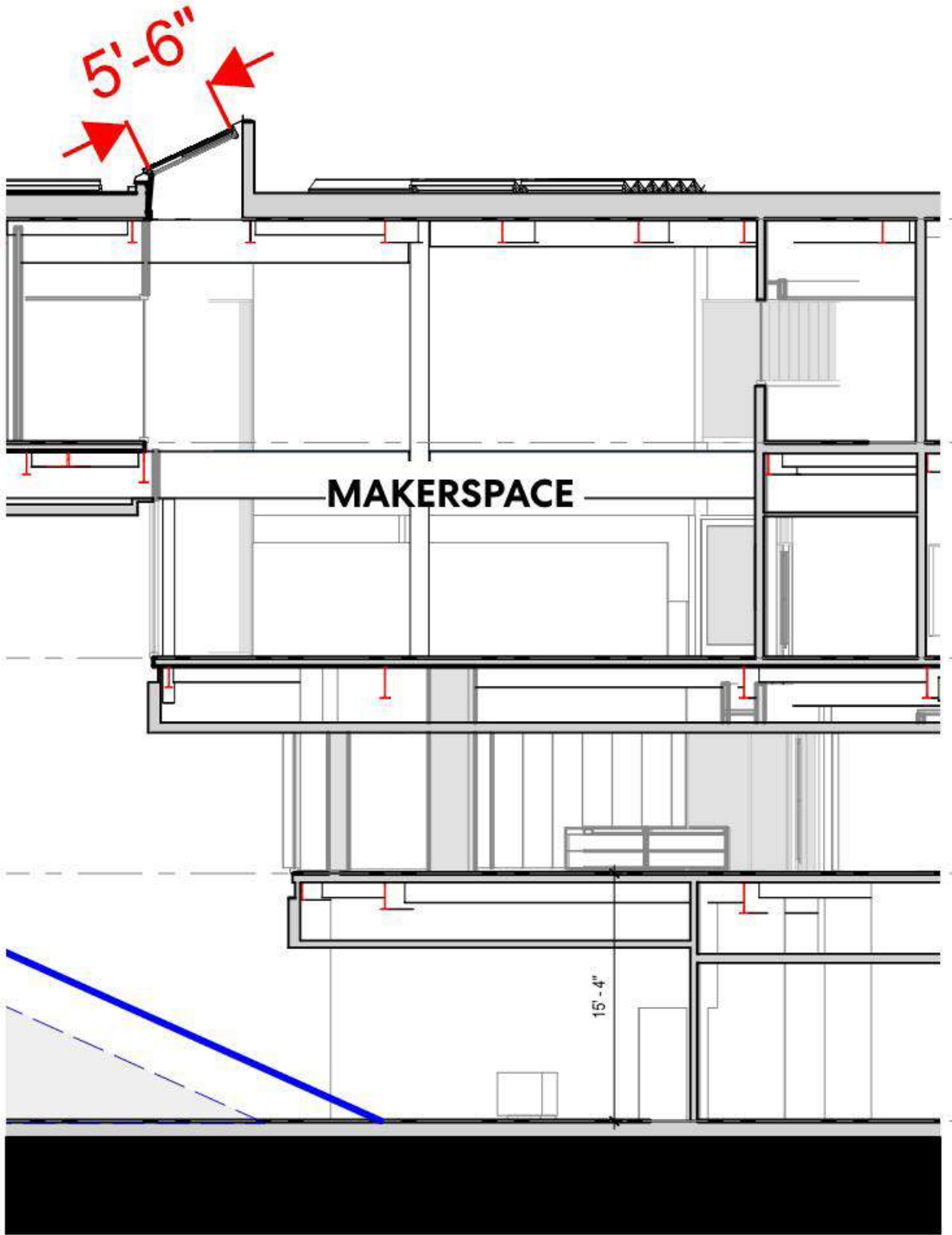
**LEVEL 04**



**LEVEL 03**

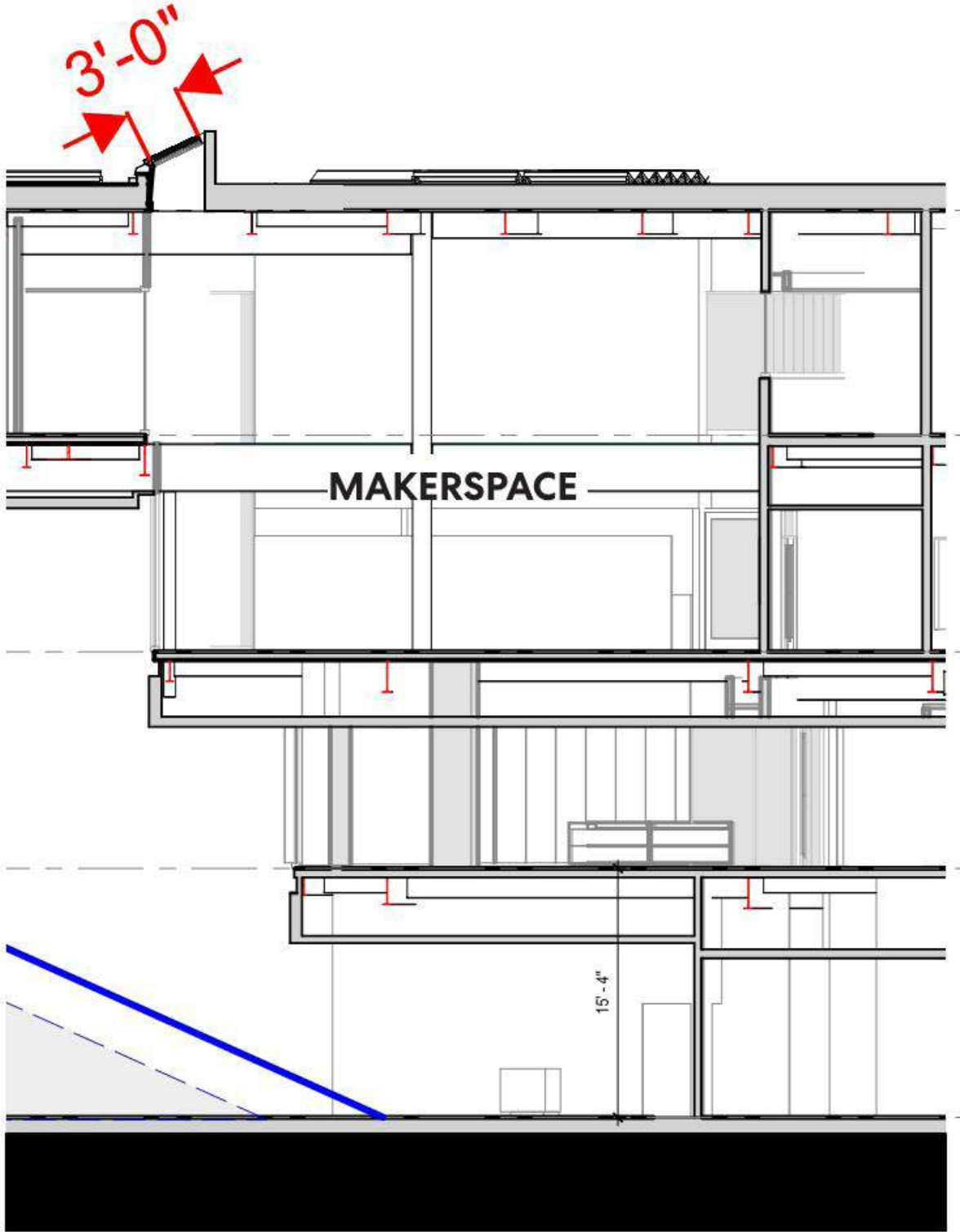
# EXTERIOR DESIGN - HS SKYLIGHT

60% CD DESIGN: 5'-6" WIDE SKYLIGHT

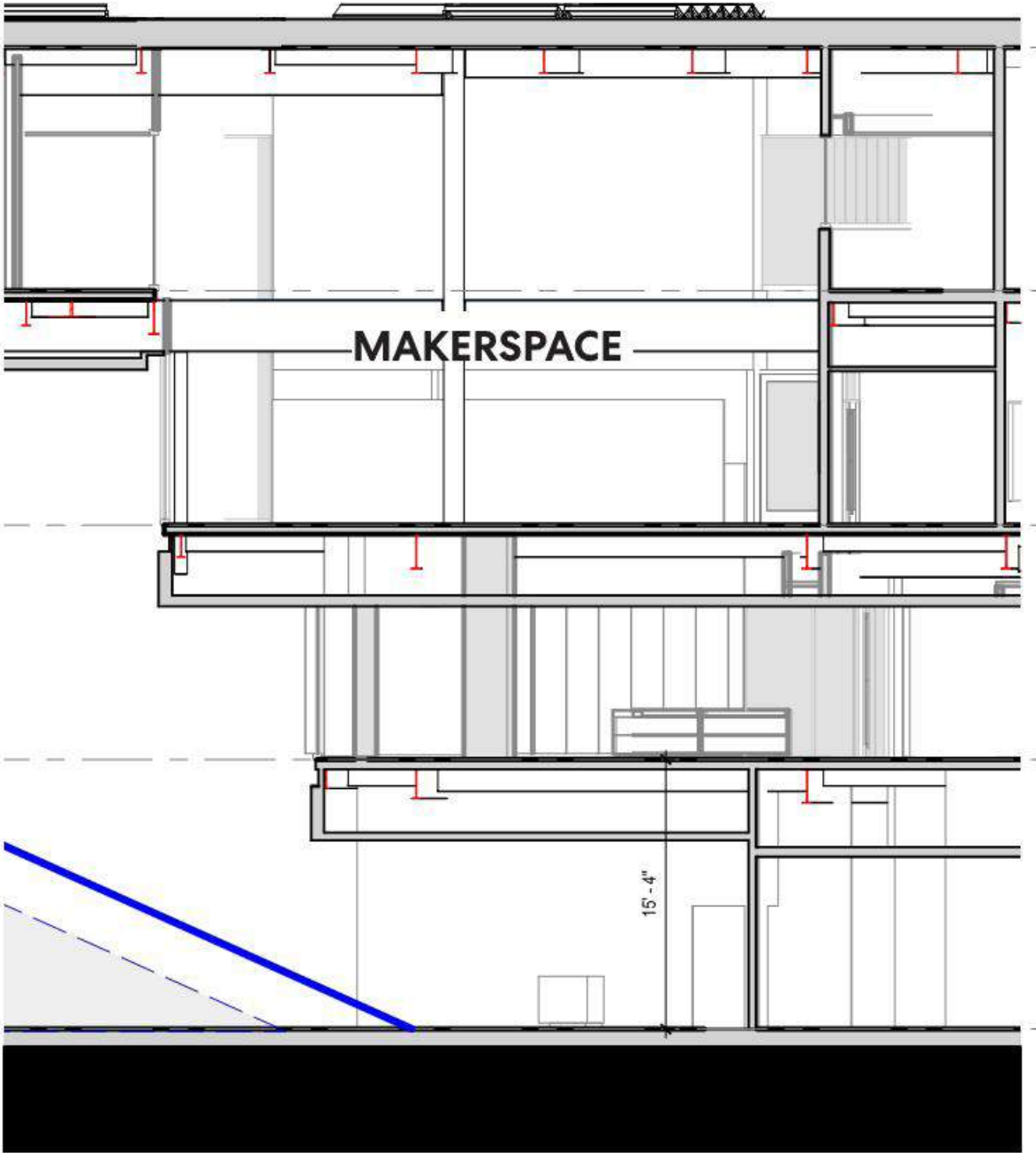


# EXTERIOR DESIGN - HS SKYLIGHT

3'-0" WIDE SKYLIGHT (& GLASS RAILING REDUCTION)



# EXTERIOR DESIGN - HS SKYLIGHT



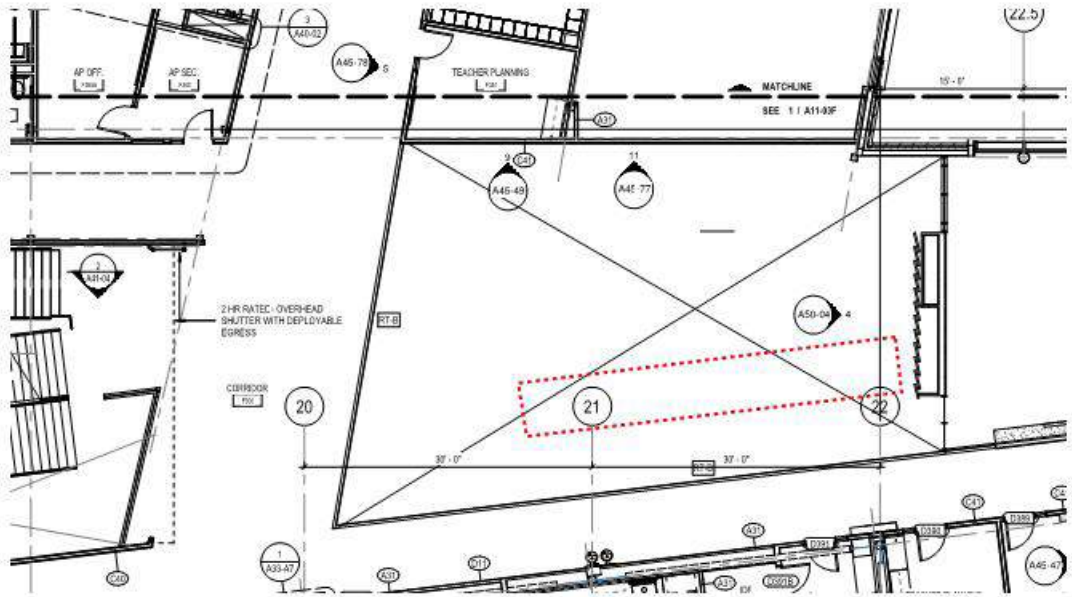
# NO SKYLIGHT (& GLASS RAILING REDUCTION)



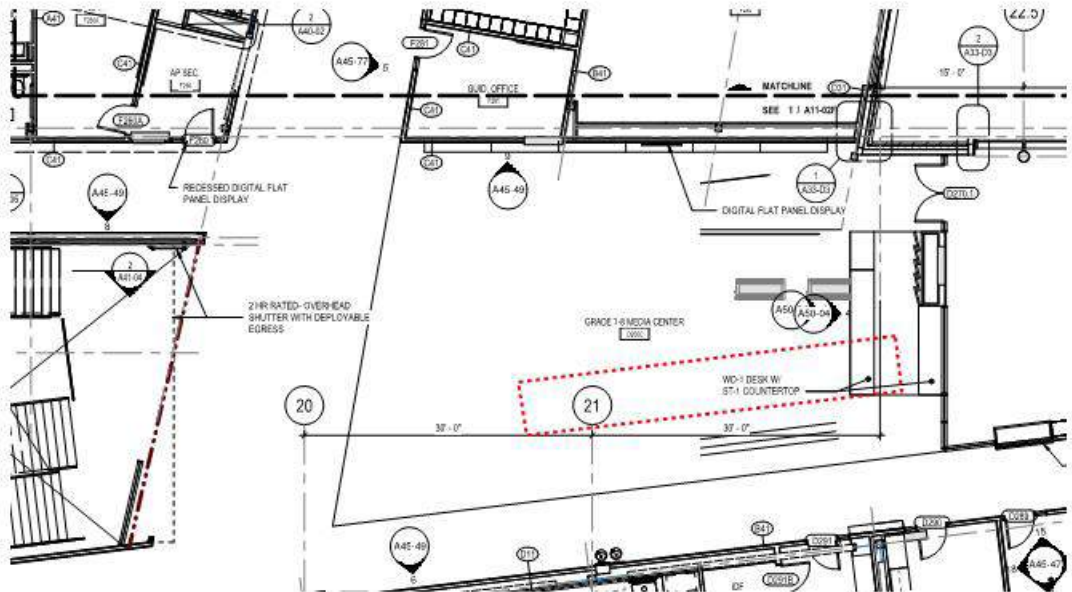
# EXTERIOR DESIGN - MS SKYLIGHT

 SKYLIGHT ABOVE

## 60% CD DESIGN

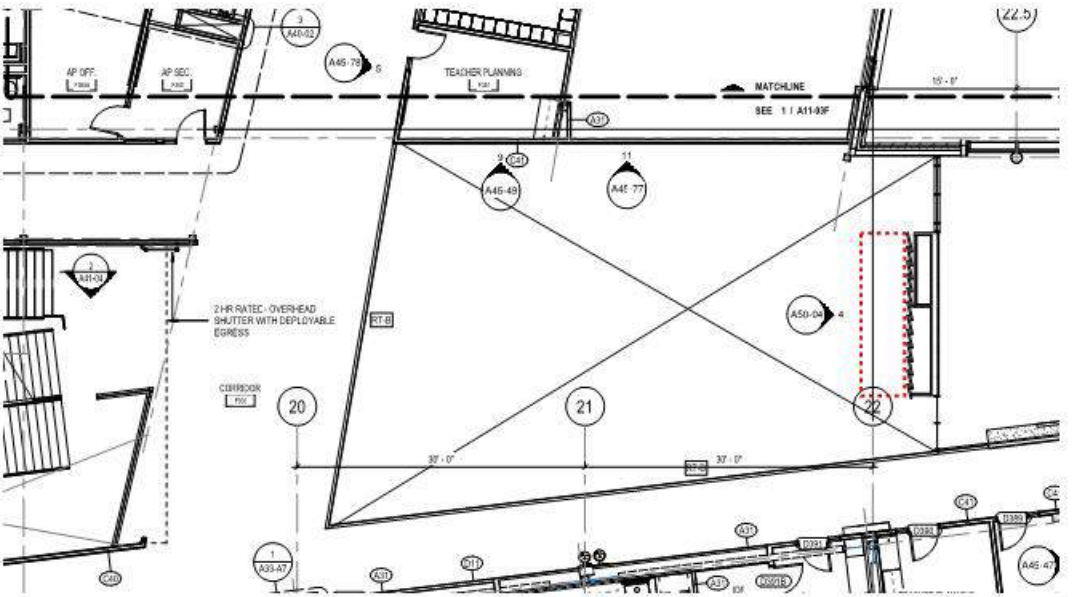


LEVEL 03

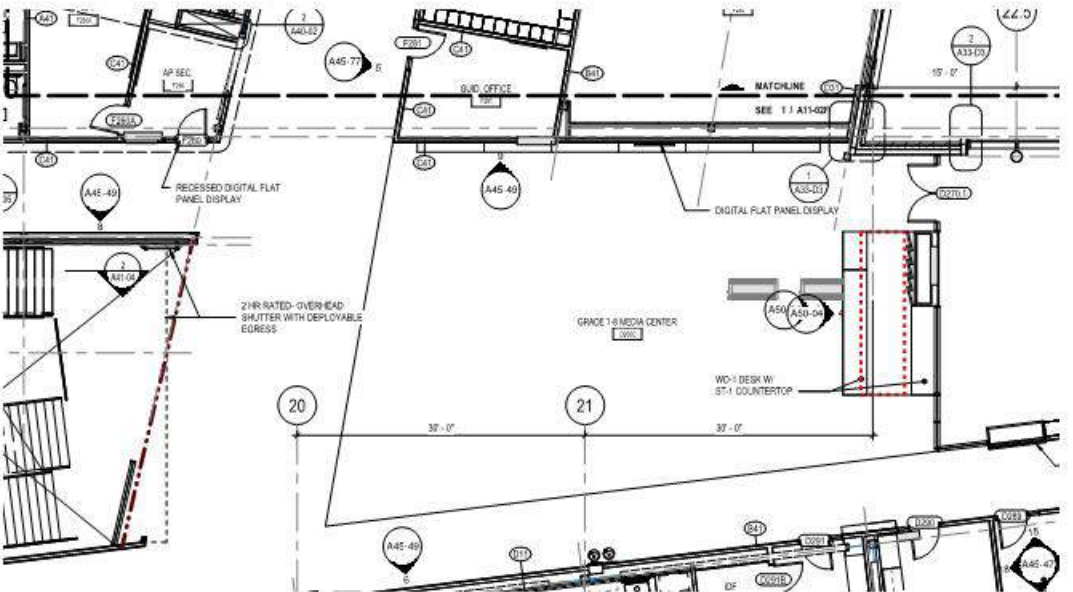


LEVEL 02

## RECOMMENDED 50% REDUCTION



LEVEL 03



LEVEL 02

**RECOMMENDED 50% REDUCTION**

**MIDDLE SCHOOL**

**CURRENT DESIGN**





**100% REDUCTION**

**VE STRATEGY**

**MIDDLE SCHOOL**

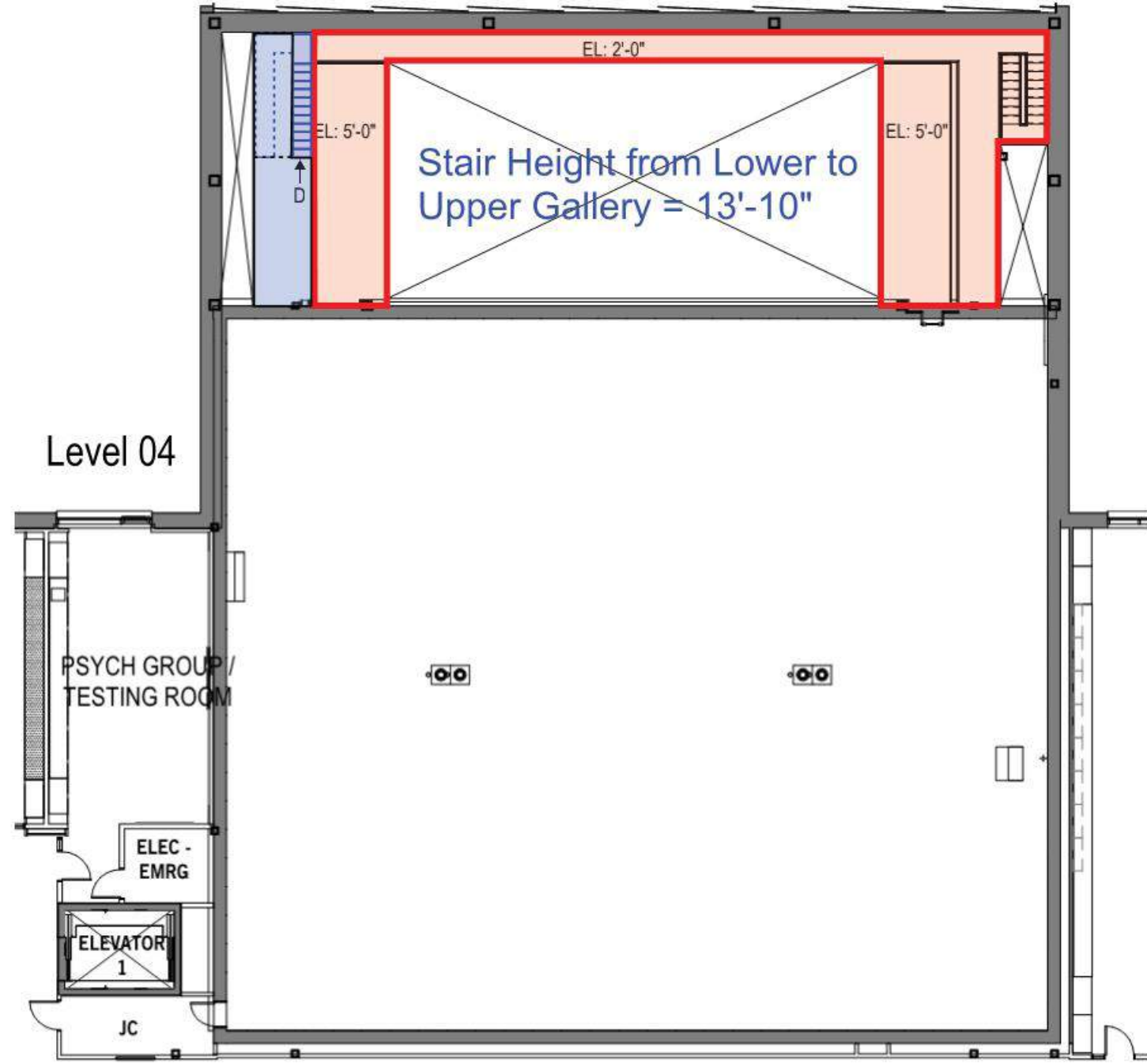
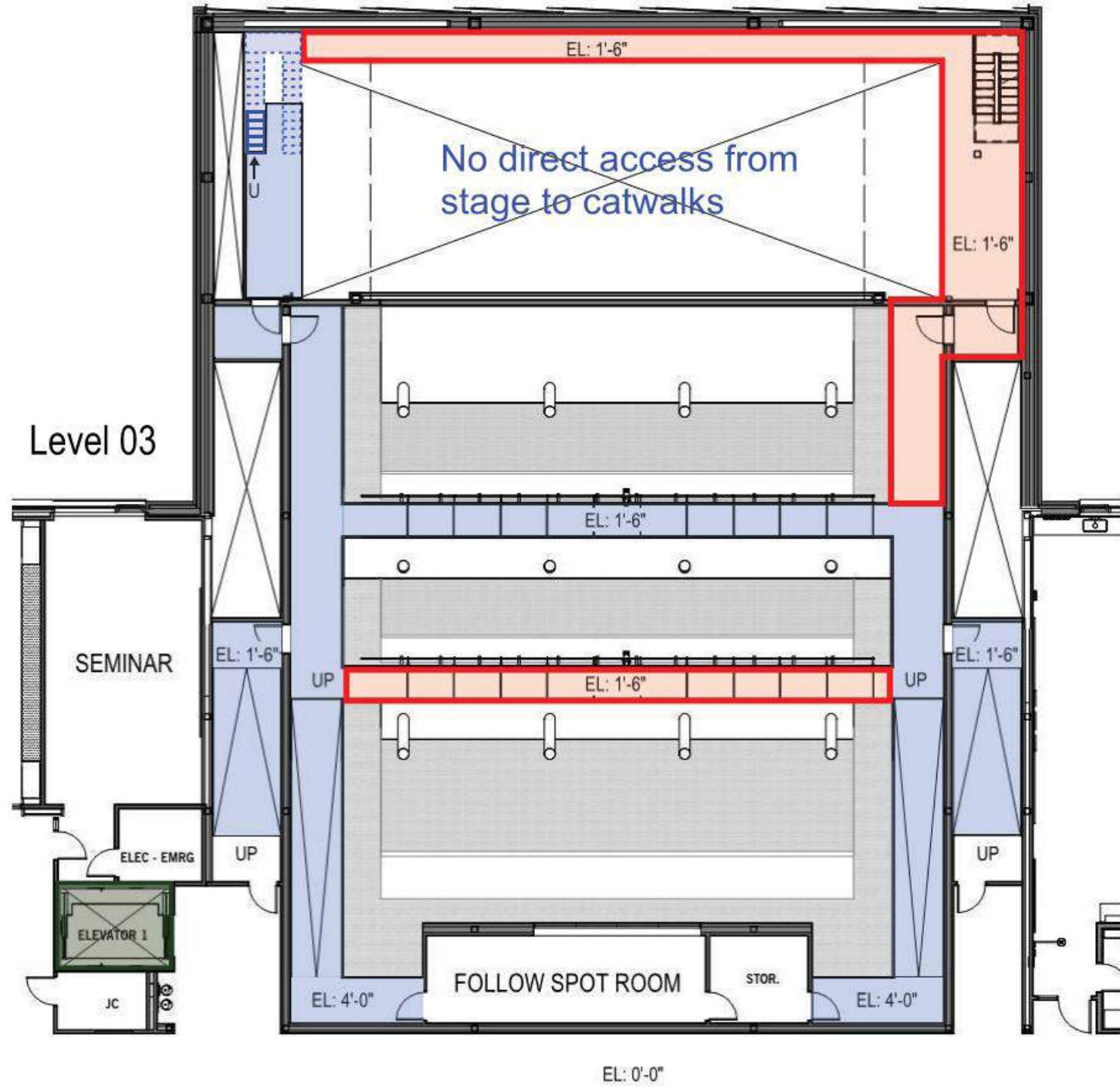


# **UPDATED INTERIOR VE ITEMS**

- 1. REDUCE AUDITORIUM CATWALKS**
- 2. ALTERNATE WOOD PANEL PRODUCT**
- 3. REDUCE WALL TILE IN LOCKER ROOMS**
- 4. REDUCE CLASSROOM MARKERBOARDS**

# REDUCE AUDITORIUM CATWALK - REVISED

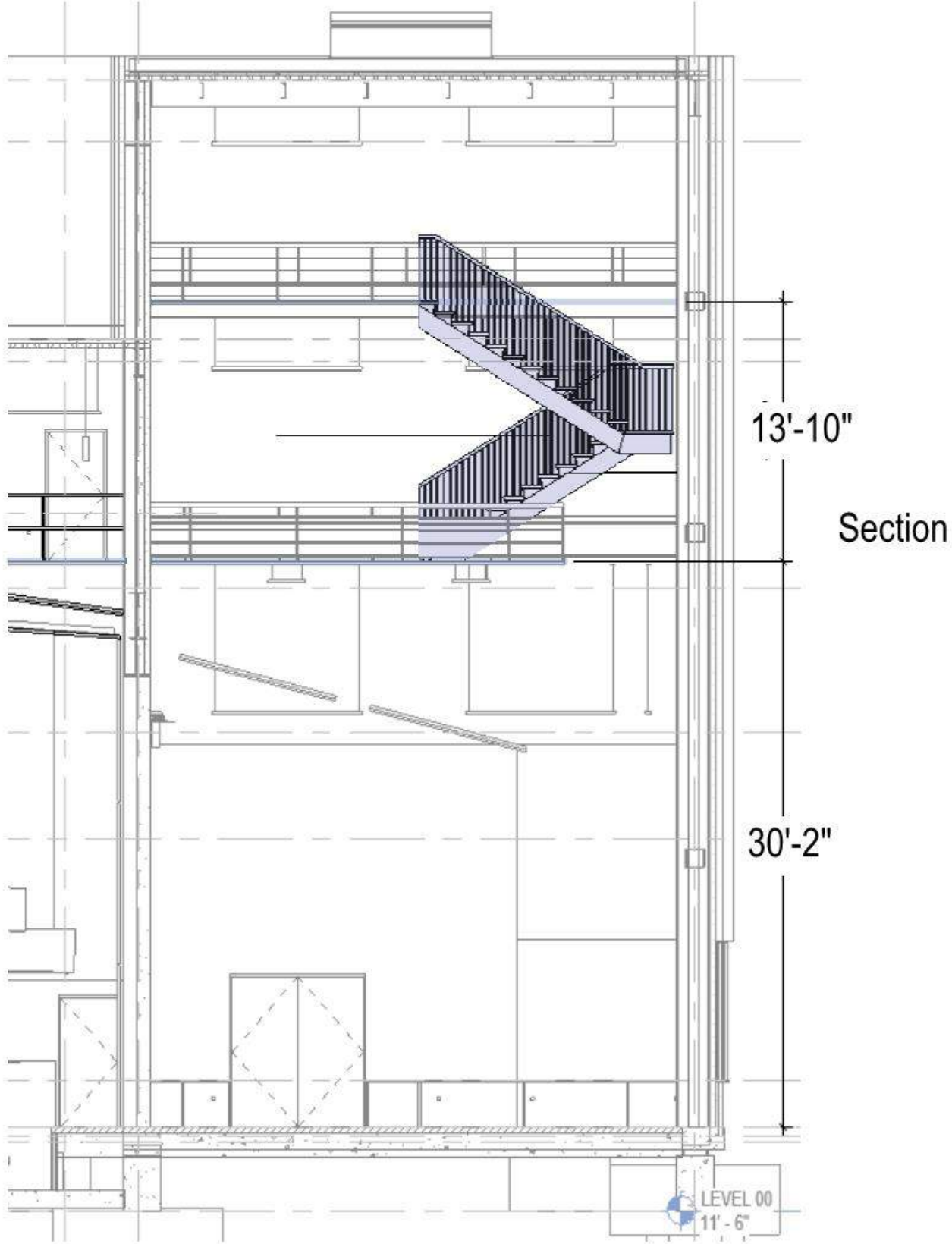
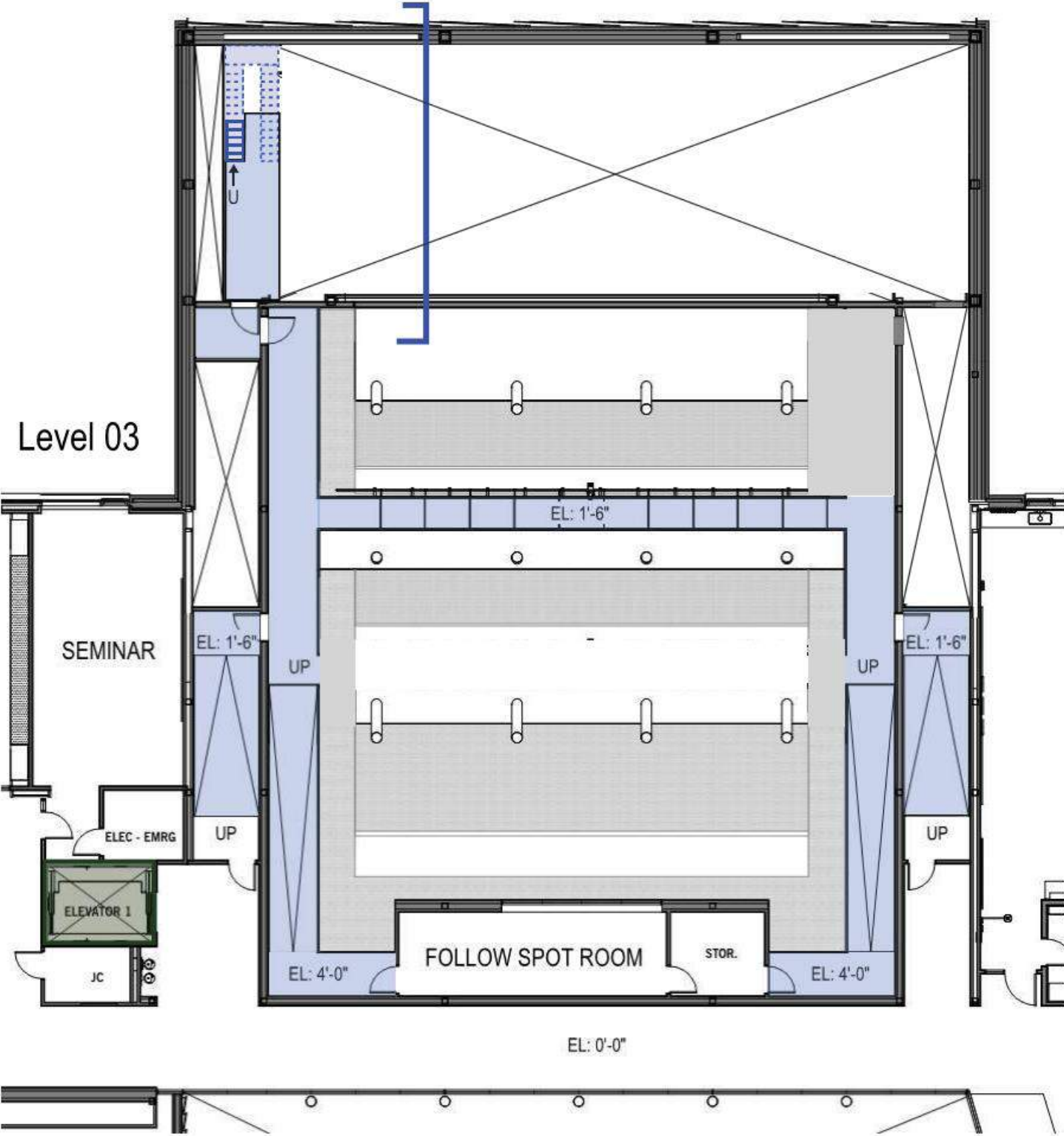
- Catwalks - Student-Accessible
- Added Stair
- Elevator Location (for reference)
- Eliminate Full-Height Stage Stair + Add Stair Between Stage Galleries
- Reduce Student-Accessible Catwalk Area
- Eliminate Maintenance Catwalks (Maintenance will require a lift)



ION INNOVATION

# REDUCE AUDITORIUM CATWALK - REVISED

- Catwalks - Student-Accessible
- Added Stair
- Elevator Location (for reference)

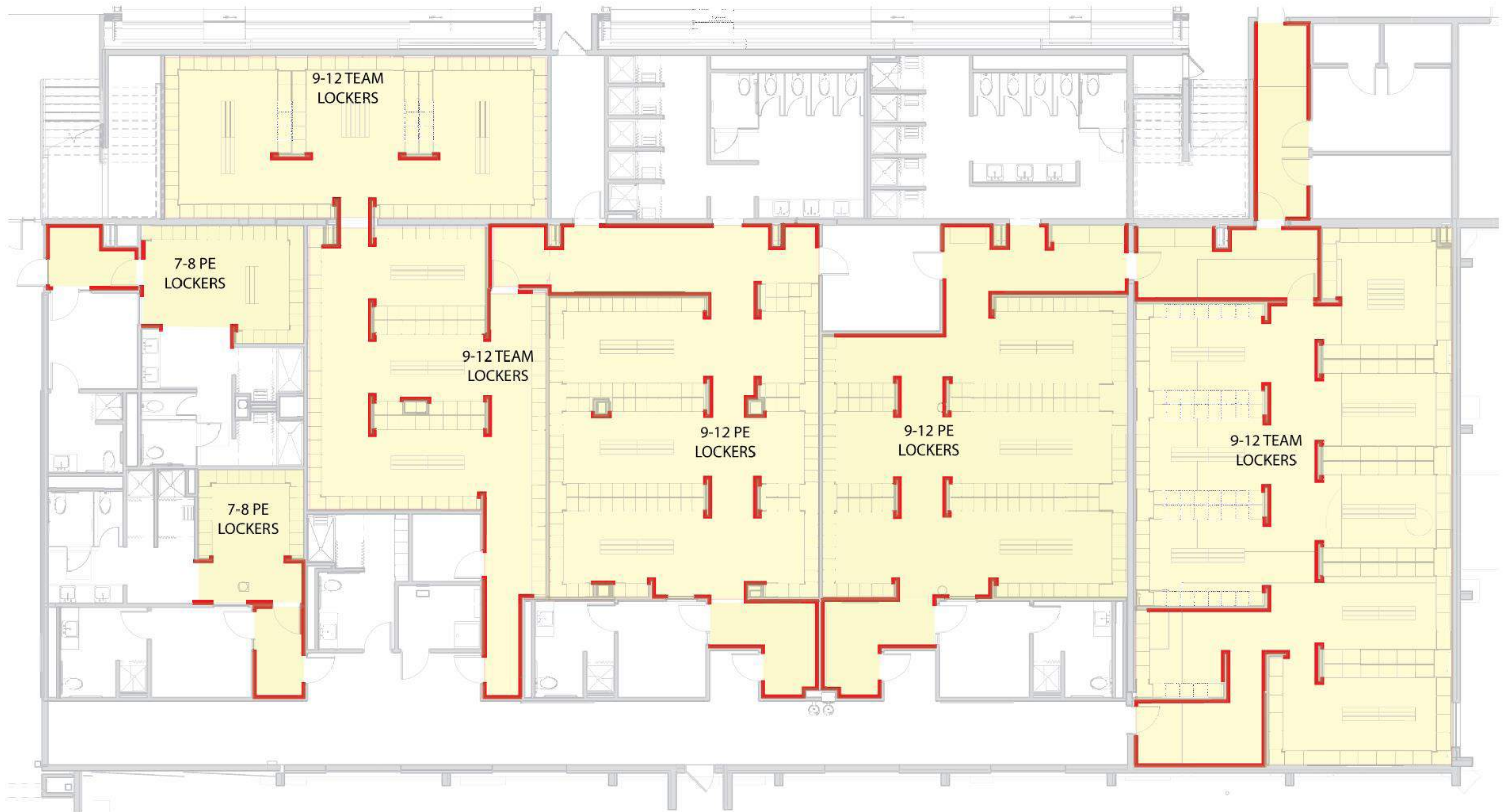


## UPDATED INTERIOR - ALTERNATIVE WOOD PANEL PRODUCT (SEE SAMPLES)



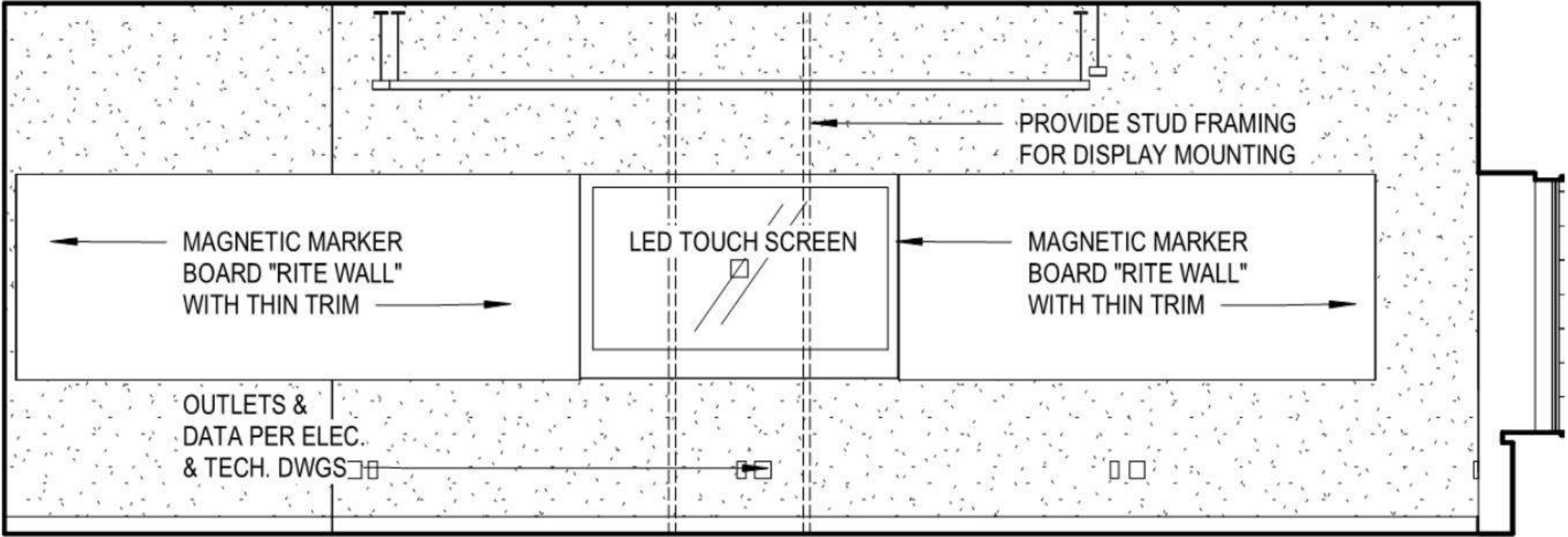
# UPDATED INTERIOR - TILE REDUCTION AT LOCKER ROOMS

REPLACE WITH ABUSE-RESISTANT GWB & METAL LOCKER END PANELS

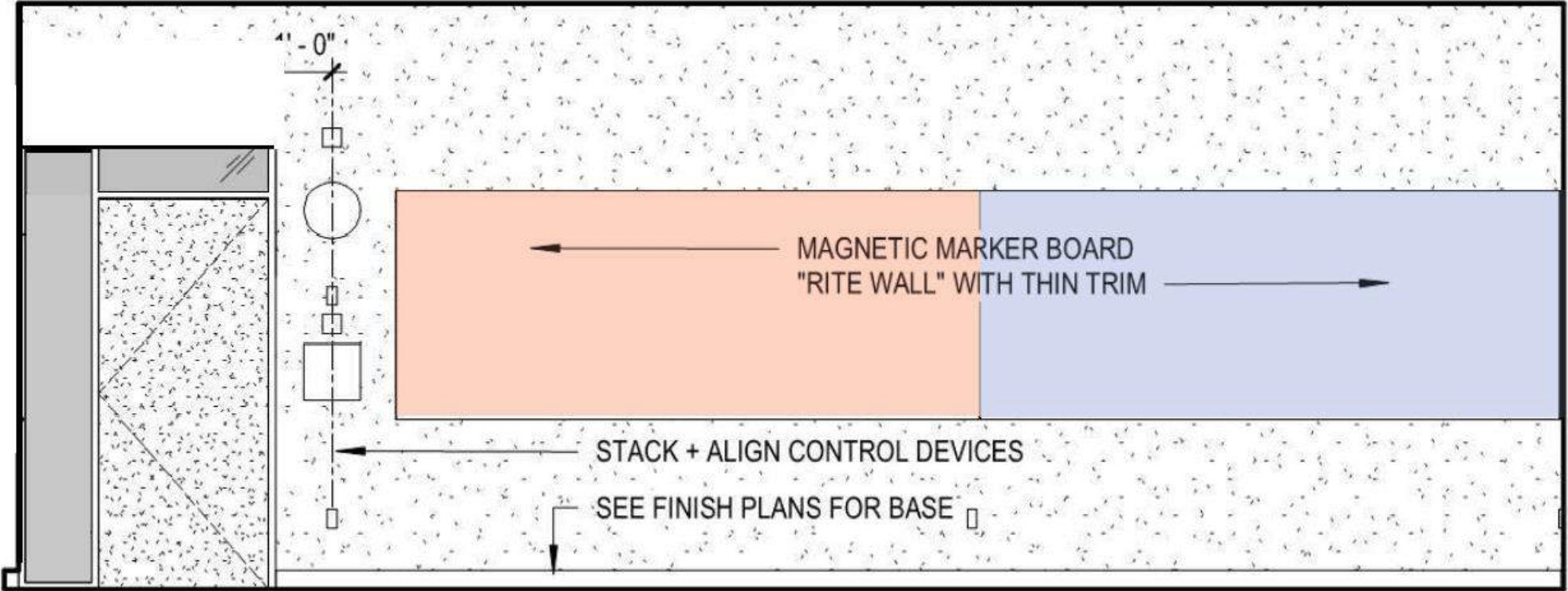


# UPDATED INTERIOR - REDUCE MARKERBOARDS IN CLASSROOMS

Primary Teaching Wall  
**PRIMARY TEACHING WALL: ALL MARKERBOARD TO REMAIN**



**CORRIDOR WALL: REDUCE TOTAL CLASSROOM BY 25% (RED) OR 50% (RED & BLUE)**



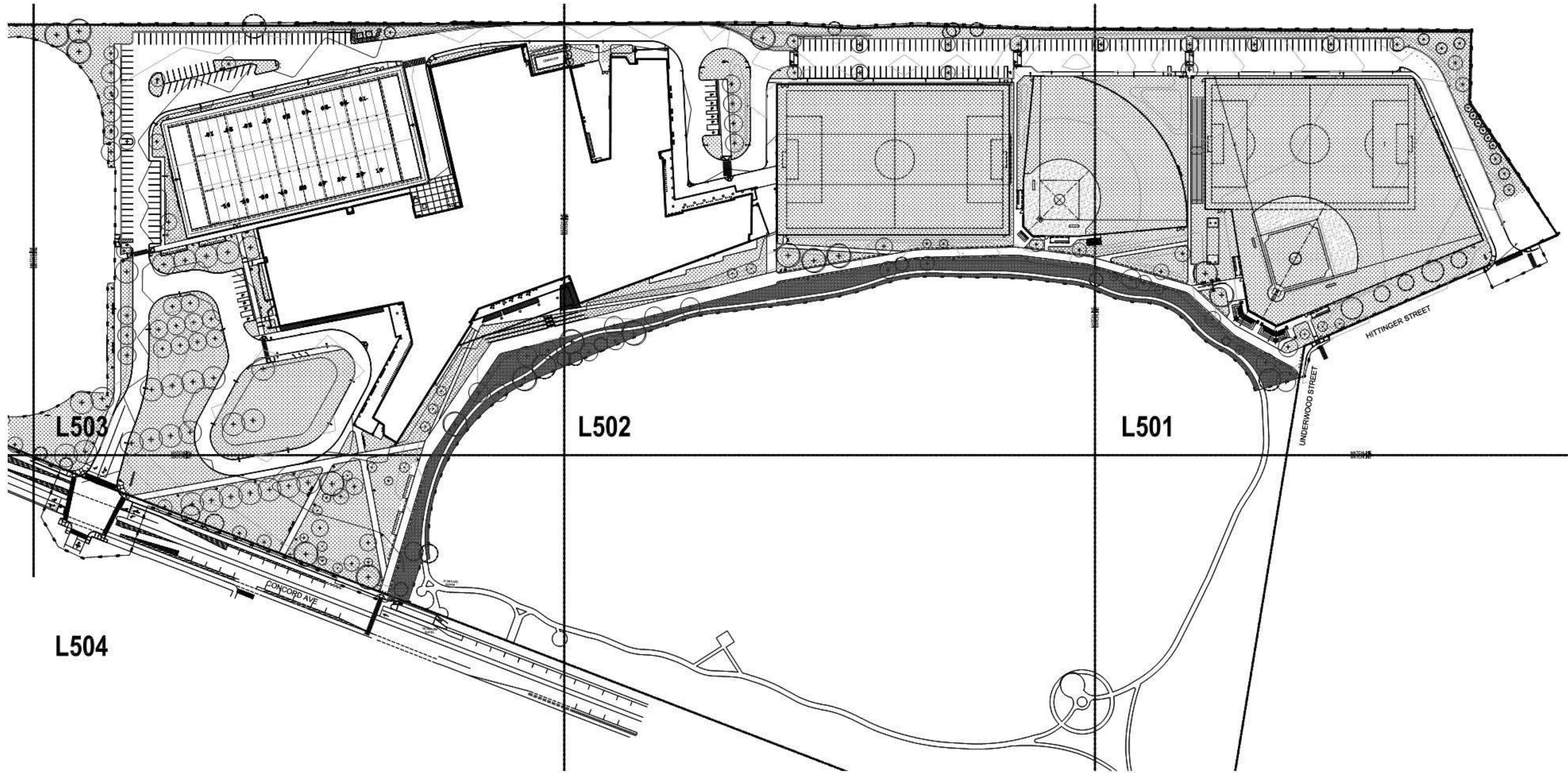
# **UPDATED SITE VE ITEMS**

- 1. REDUCE TREE COUNT OVERALL (PHASES 1 & 2)**
- 2. REDUCE TREE COUNT AT HIGH SCHOOL ENTRY**
- 3. POND TERRACE TREES**
- 4. REDUCE GRANITE CURBING**



# UPDATED SITE - REDUCE OVERALL TREE COUNT IN PHASES 1 & 2

SITE PLAN PER 60% CD SET



# UPDATED SITE - REDUCE TREES AT HIGH SCHOOL ENTRY

CURRENT DESIGN: 50 TREES



# UPDATED SITE - REDUCE TREES AT HIGH SCHOOL ENTRY

OPTION 1: 24% REDUCTION (ELIMINATE 12 TREES)



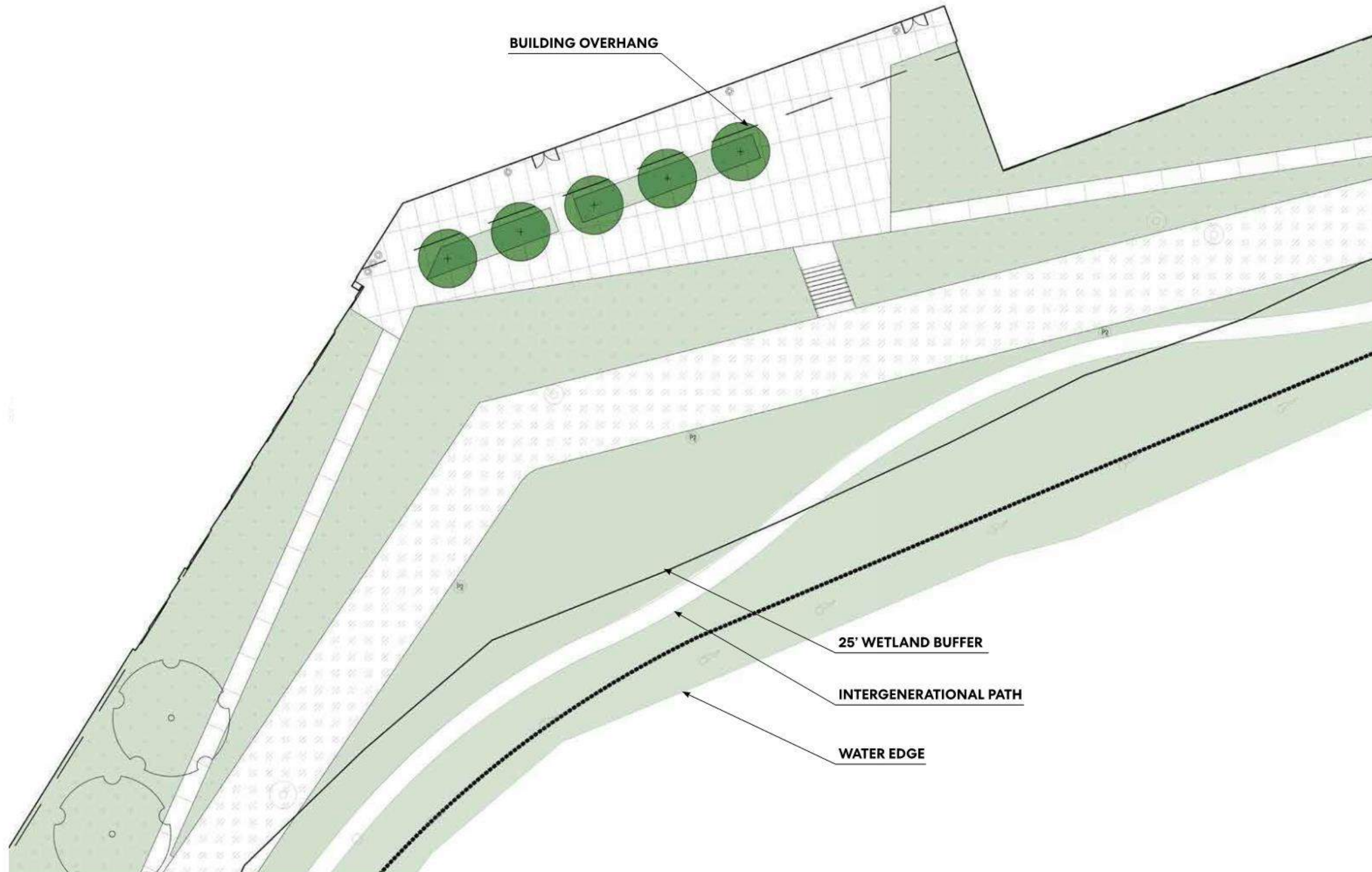
# UPDATED SITE - REDUCE TREES AT HIGH SCHOOL ENTRY

OPTION 2: 38% REDUCTION (ELIMINATE 19 TREES)



# UPDATED SITE - POND TERRACE TREES

5 TREES, 15' SPREAD



# UPDATED SITE - POND TERRACE TREES

5 TREES, 15' SPREAD



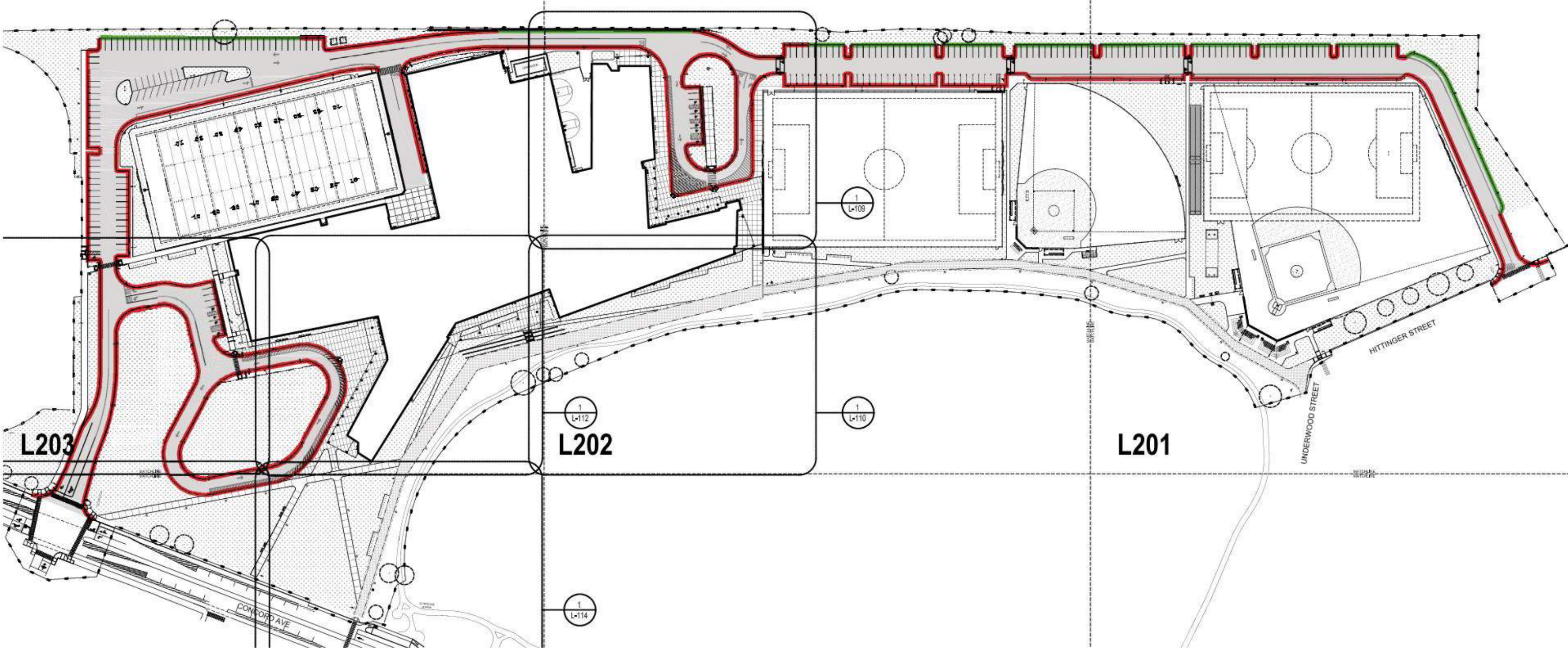
# UPDATED SITE - POND TERRACE TREES

5 TREES, 15' SPREAD



# UPDATED SITE - CURBING PER 60% CD SET

- GRANITE CURB (VERTICAL)
- ASPHALT CURBING (CAPE COD BERM)





# UPDATED SITE - CURBING VE PROPOSAL

- GRANITE CURB (VERTICAL)**
- ASPHALT CURBING (CAPE COD BERM & VERTICAL)**



# **BID-ALTERNATES**

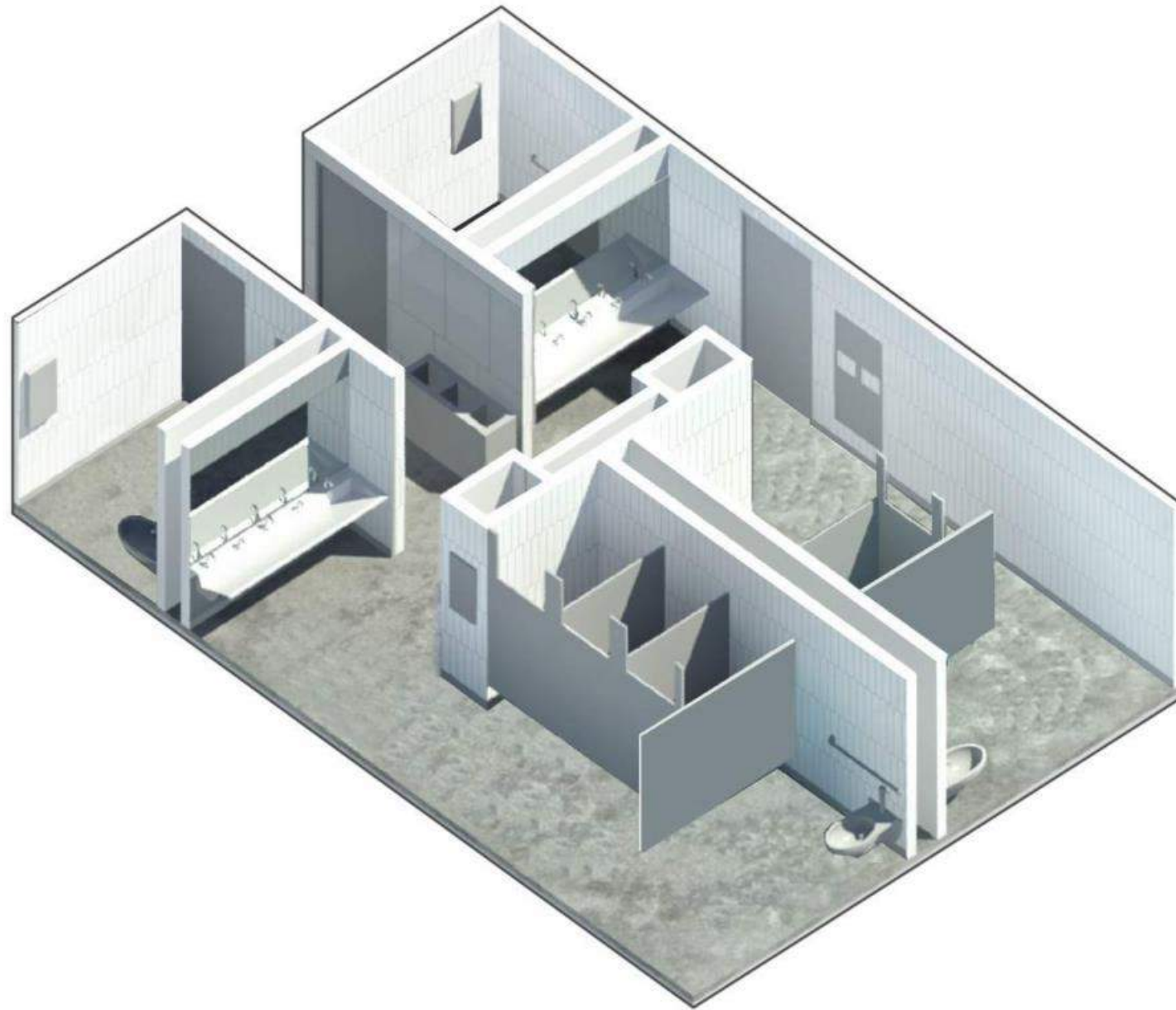
- 1. ELIMINATE ALL (5) OPERABLE PARTITIONS IN HS**
- 2. REDUCE BATHROOM WALL TILE TO WET WALL ONLY**
- 3. REPLACE ALL LEV. 1 PORCELAIN TILE W. MARMOLEUM**
- 4. PV PANELS**
- 5. GRASS RUGBY FIELD IN LIEU OF TURF**
- 6. WEST FIELDS LANDSCAPING**

**ELIMINATE ALL (5) OPERABLE  
PARTITIONS IN HIGH SCHOOL**

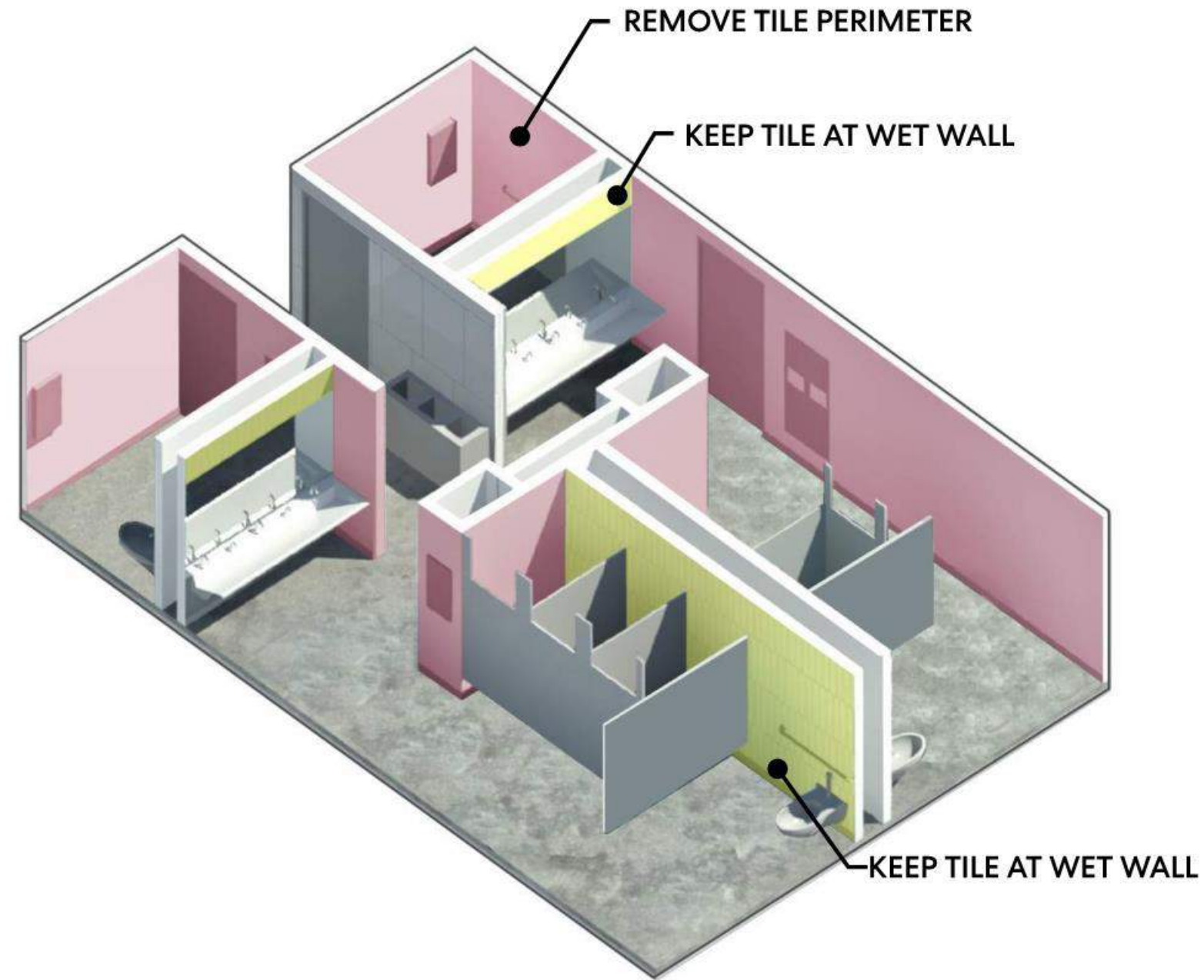
# BID ALTERNATES - INTERIOR

TILE ONLY ON WET WALLS IN BATHROOMS

REPLACE NON-WET WALL TILE WITH ABUSE RESISTANCE GWB AND SCUFFMASTER



60% PRICING SET



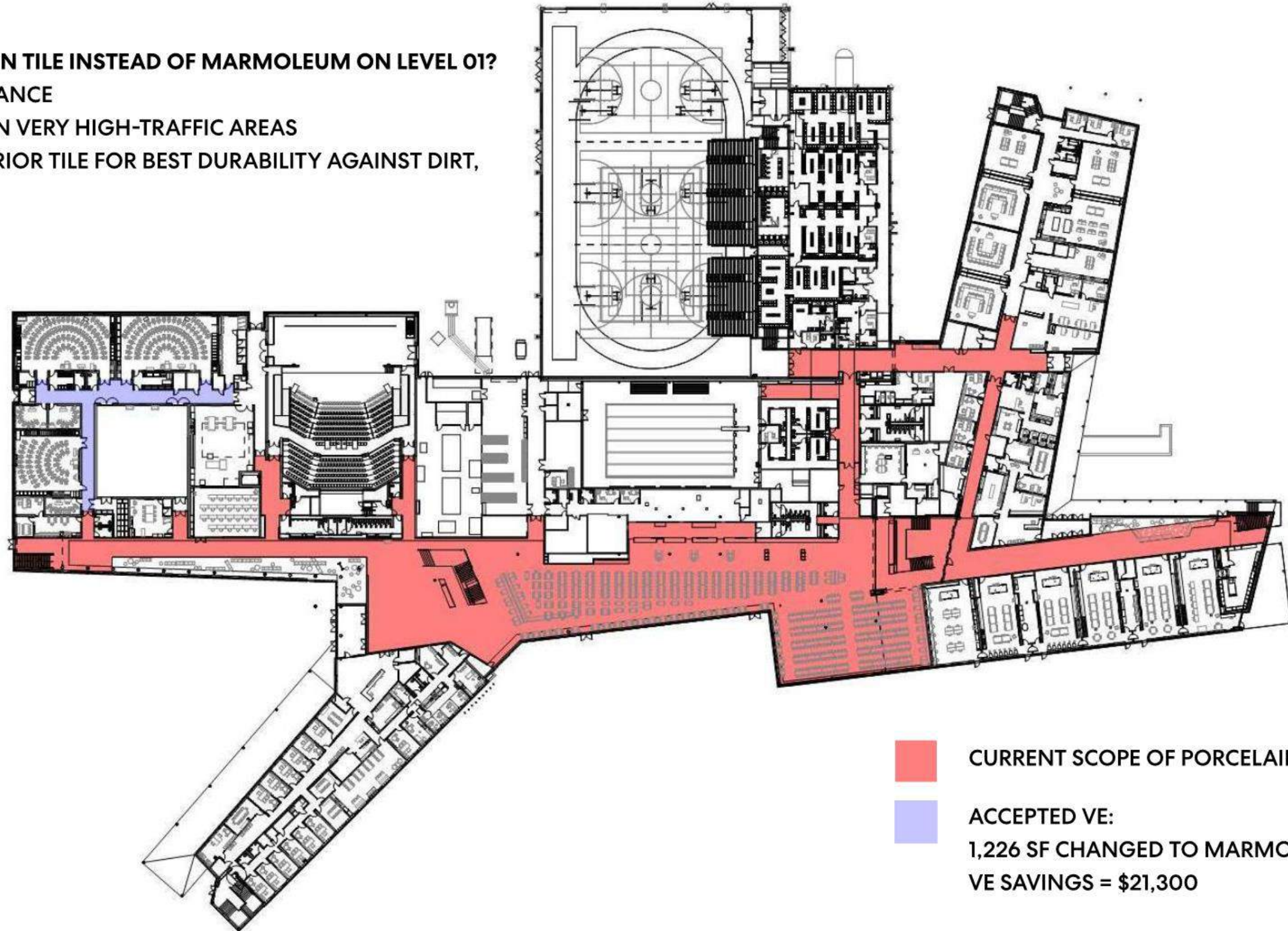
VE STRATEGY

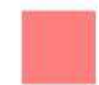
# BID ALTERNATES - INTERIOR


REPLACE ALL LEVEL 01 PORCELAIN TILE WITH MARMOLEUM

## WHY KEEP PORCELAIN TILE INSTEAD OF MARMOLEUM ON LEVEL 01?

- HIGHER SLIP RESISTANCE
- LONGER LIFESPAN IN VERY HIGH-TRAFFIC AREAS
- SPEC'D AS AN EXTERIOR TILE FOR BEST DURABILITY AGAINST DIRT, MUD, SALT, WATER

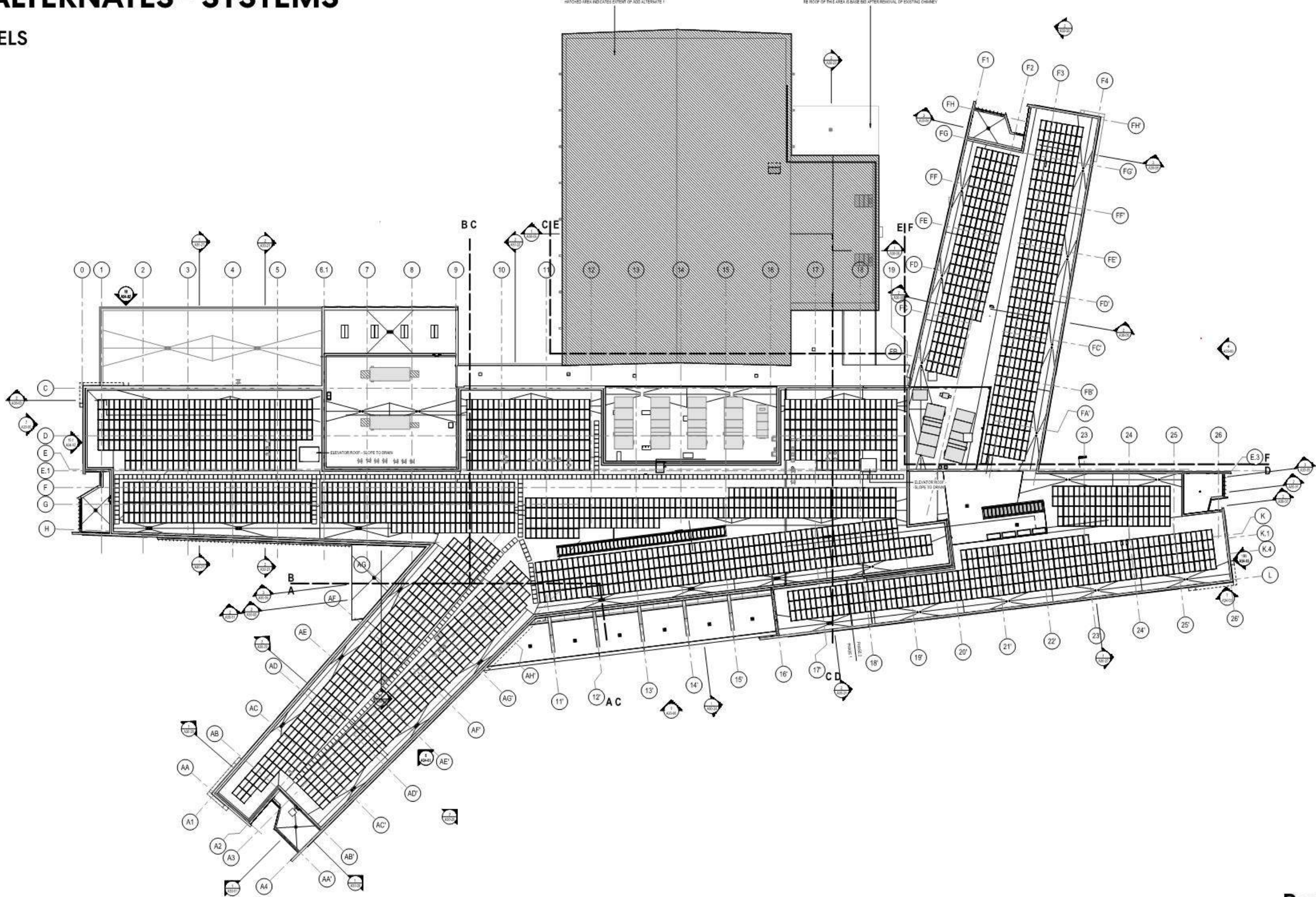


 CURRENT SCOPE OF PORCELAIN TILE

 ACCEPTED VE:  
1,226 SF CHANGED TO MARMOLEUM  
VE SAVINGS = \$21,300

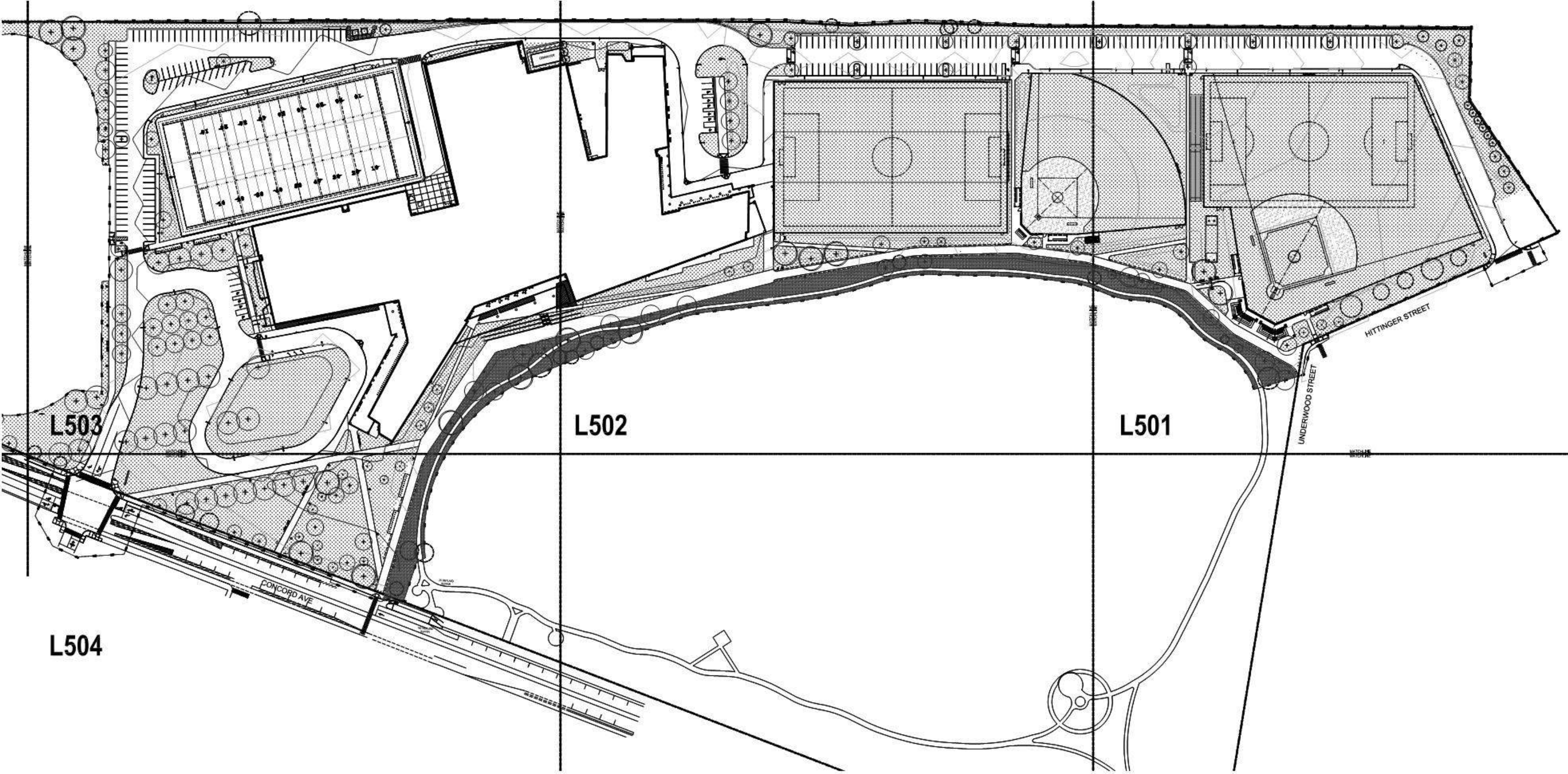
# BID ALTERNATES - SYSTEMS

## PV PANELS



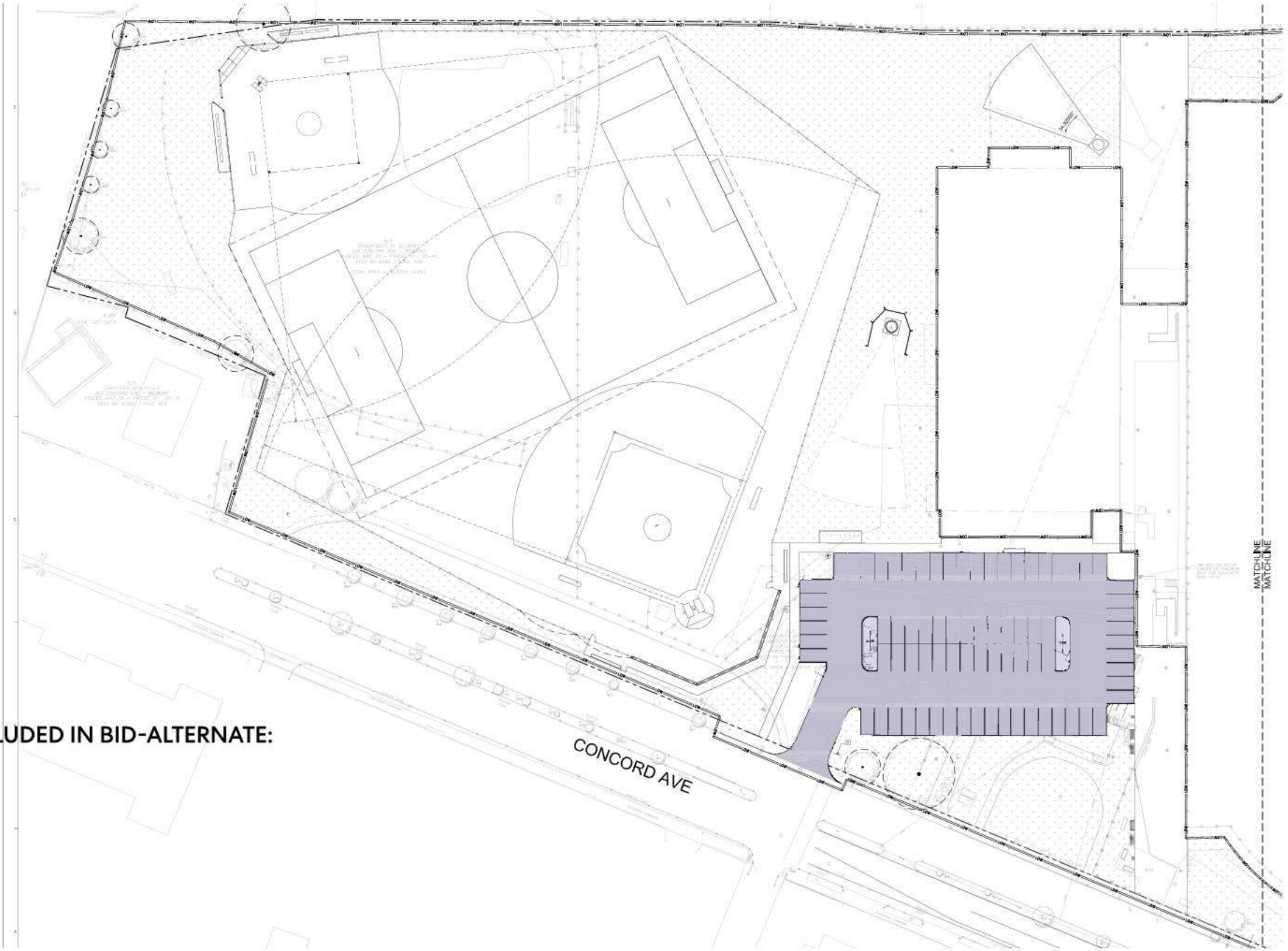
# BID ALTERNATES - SITE / STRUCTURE

GRASS RUGBY FIELD IN LIEU OF TURF



# BID ALTERNATES - SITE / STRUCTURE

CHANGE LANDSCAPING OF PHASE 3 (WEST FIELDS) TO BID-ALT; KEEP PARKING LOT ONLY



PERKINS  
+WILL

### LIST OF ITEMS INCLUDED IN BID-ALTERNATE:

- LANDSCAPING
- TREES
- FENCING
- FIELDS
- LIGHTING
- FURNISHINGS