

BELMONT MIDDLE AND HIGH SCHOOL BUILDING COMMITTEE

SEPTEMBER 4 2019

Perkins&Will

AGENDA

- **SCHEDULE** *(DPI)*
- **PROCESS / COSTING** *(SKANSKA)*
 - **Overall Process**
 - **VE Targets**
 - **Exterior Costing Update**
- **INTERIOR VE ITEMS** *(PERKINS AND WILL)*

SCHEDULE / VE ROAD MAP

	9/4 (Wed PM)	9/11 (Wed AM)	9/18 (Wed)
EXTERIOR	○ Update \$		○ Update \$
INTERIOR	● Presentation \$	○ Update \$	○ Update \$
SYSTEMS		● Presentation \$	○ Update \$
SITE / STRUCTURE		● Presentation \$	○ Update \$
PHASING AND LOGISTICS			● Presentation \$
GENERAL CONDITIONS			● Presentation \$
WRAP UP			● Presentation \$

○ Update \$

● Presentation \$

PROCESS / VE TARGETS

	TARGET \$
EXTERIOR	\$3.5-4.0 MILLION
INTERIOR	\$6.5-8.0 MILLION
SYSTEMS	\$2.5-3.5 MILLION
SITE / STRUCTURE	\$2.0-3.0 MILLION
PHASING AND LOGISTICS	\$0.25-0.75 MILLION
GENERAL CONDITIONS	\$1.0-1.5 MILLION
	\$19.2 MILLION VE TARGET

VE STRATEGIES - INTERIOR

1. CEILING

- REDUCE METAL
- SIMPLIFY BAFFLE
- LOWER SQFT COST ACT
- LOWER COST AUD. BALCONY
- LOWER COST AUD. HOUSE

2. FLOORING

- REDUCE PORCELAIN TILE (LEVEL 01)

3. LIGHTING

- REDUCE FIXTURE COSTS

4. WALL CONST. & FINISHES

- REDUCE CORRIDOR TILE HEIGHT
- REDUCE WC TILE SCOPE
- LOWER COST ACOUSTIC PANELING
- SIMPLIFIED ACOUSTIC WOOD PANELING

5. GLASS WALLS & RAILS

- REDUCE FULL HEIGHT GLASS
- MS STAIR TO METAL POST RAILING

6. CASEWORK

- REDUCE GENERAL & SPED CLASSROOMS
- REDUCE LABS
- REDUCE ART

7. FIRE CONTROL DOORS

- SIMPLIFY & REDUCE SCOPE

8. MISC. SCOPE ADJUSTMENTS

CEILING COST REDUCTION STRATEGY

VE STRATEGIES:

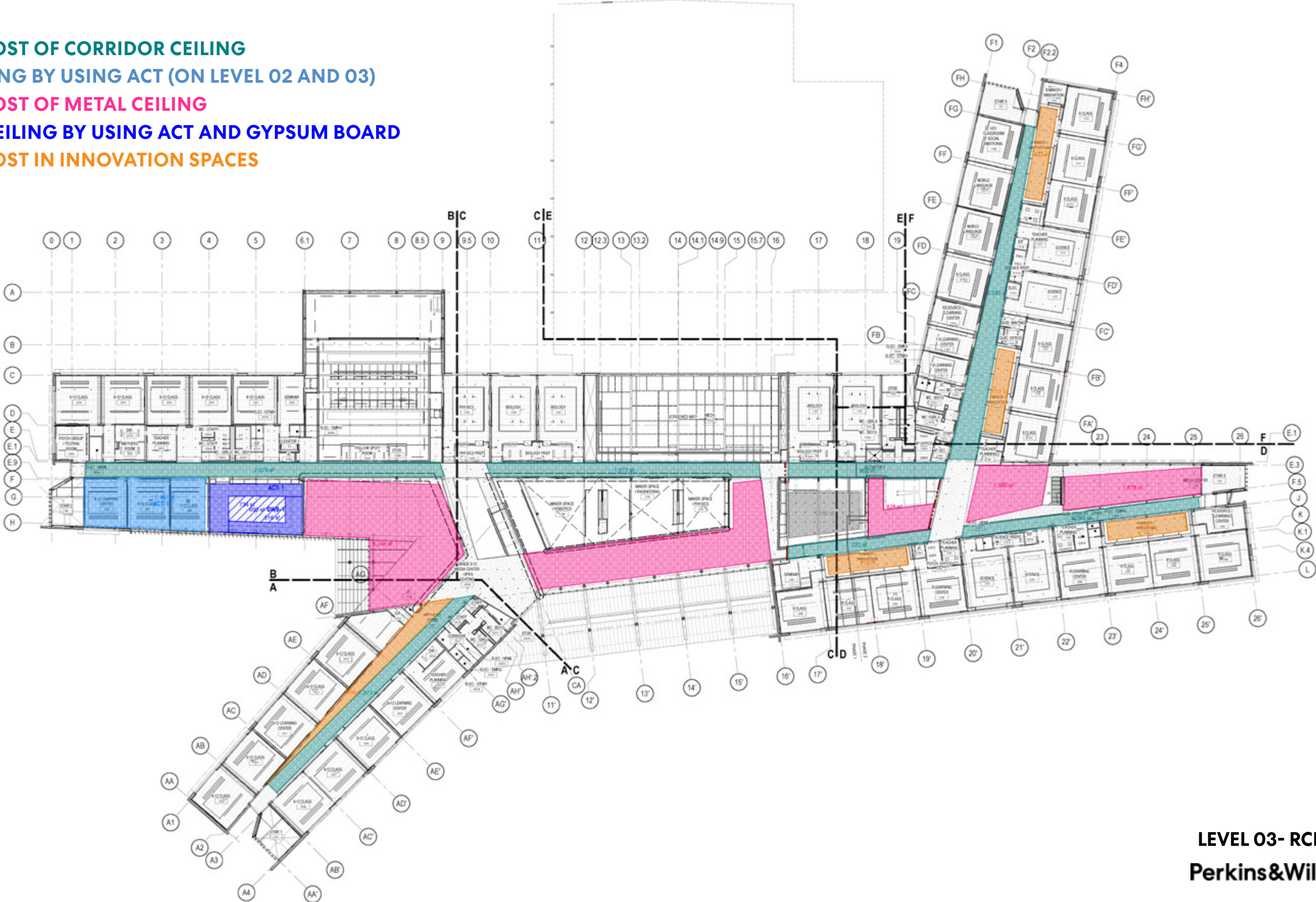
REDUCE PRODUCT COST OF CORRIDOR CEILING

REDUCE METAL CEILING BY USING ACT (ON LEVEL 02 AND 03)

REDUCE PRODUCT COST OF METAL CEILING

SIMPLIFY CHORUS CEILING BY USING ACT AND GYPSUM BOARD

REDUCE PRODUCT COST IN INNOVATION SPACES



CEILING COST REDUCTION STRATEGY

CD 60% PRICING SET - ARKTURA SOFT GRID AT ACADEMIC CORRIDOR

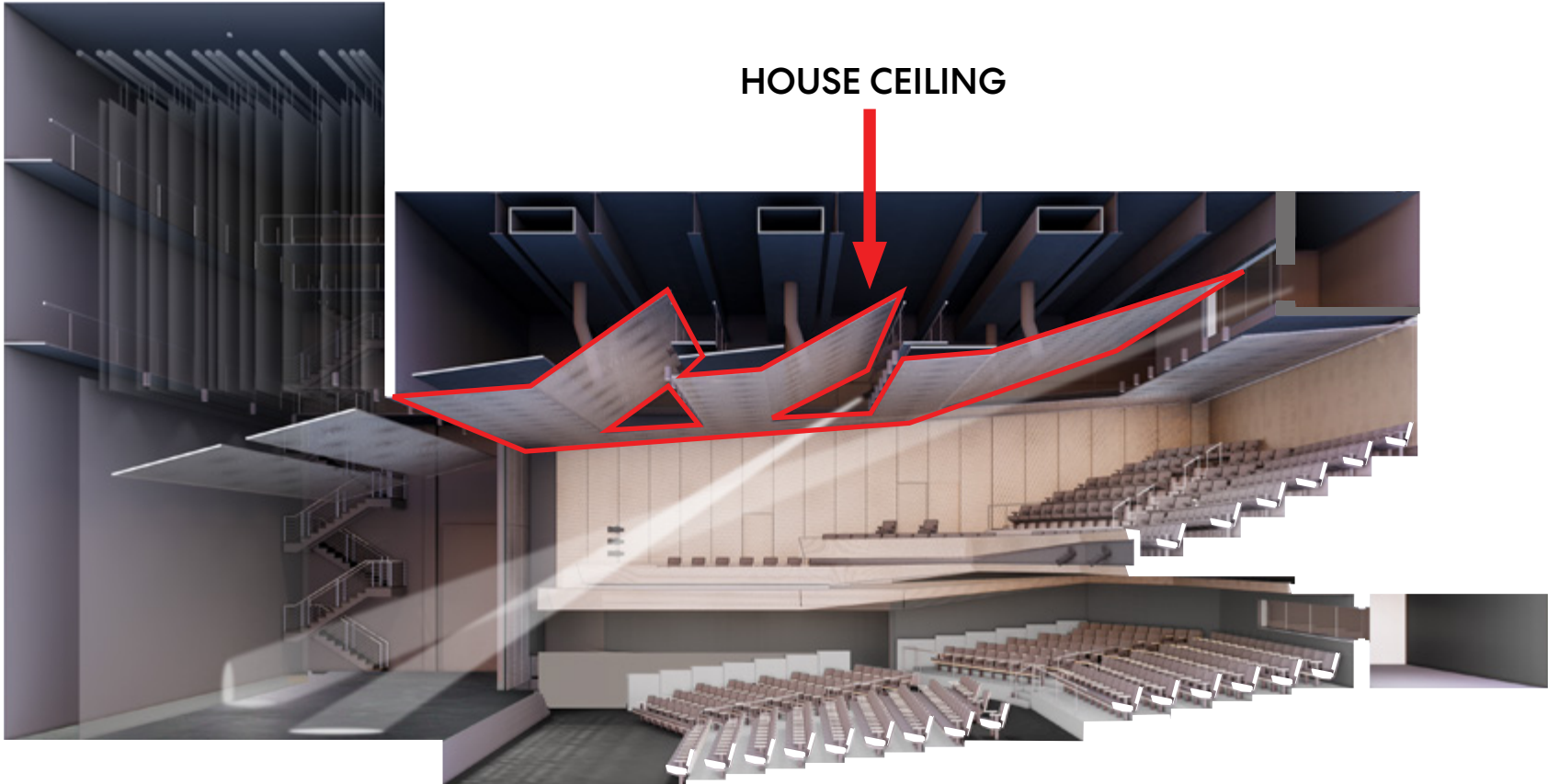


CEILING COST REDUCTION STRATEGY

VE STRATEGY - BAFFLE METTAL CEILING SYSTEM AT ACADEMIC CORRIDOR



CEILING COST REDUCTION STRATEGY



HOUSE CEILING



60% PRICING SET - REVEAL JOINTS, LARGE FORMAT PANELS



VE STRATEGY - LAY-IN (FRAMED JOINTS), STANDARD PANEL SIZE

CEILING COST REDUCTION STRATEGY



CEILING UNDER BALCONY



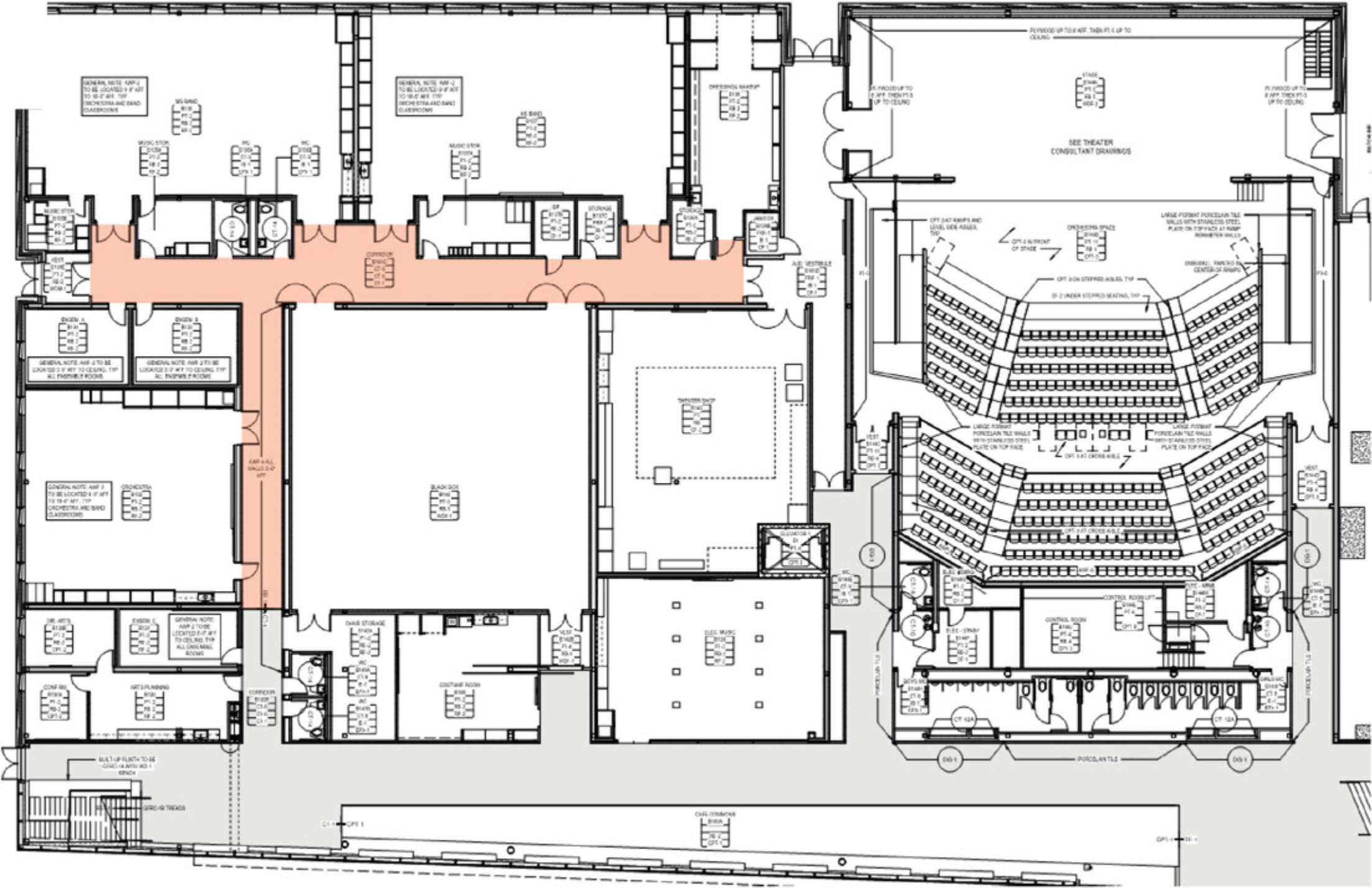
60% PRICING SET: WOOD CEILING



VE STRATEGY: PAINTED GYPSUM

FLOORING COST REDUCTION STRATEGY

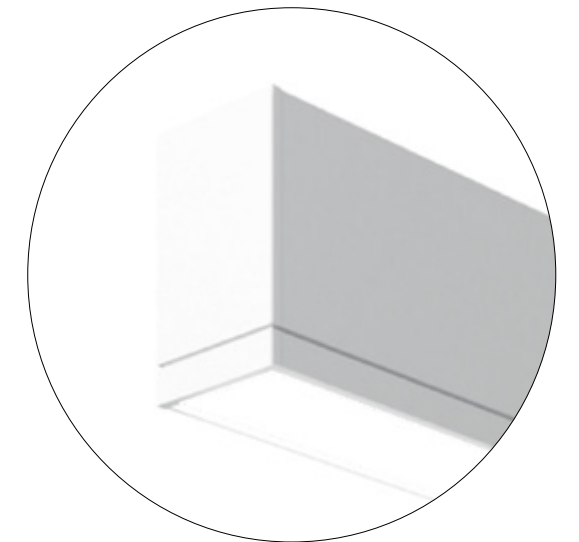
VE STRATEGY: CHANGE SHADED RED AREA (1,633 SF) FROM CT-1 (PORCELAIN TILE) TO RF-1 (LINOLEUM SHEET)



LIGHTING COST REDUCTION STRATEGY EXAMPLE



**60% PRICING SET:
FLUXWERX PROFILE**

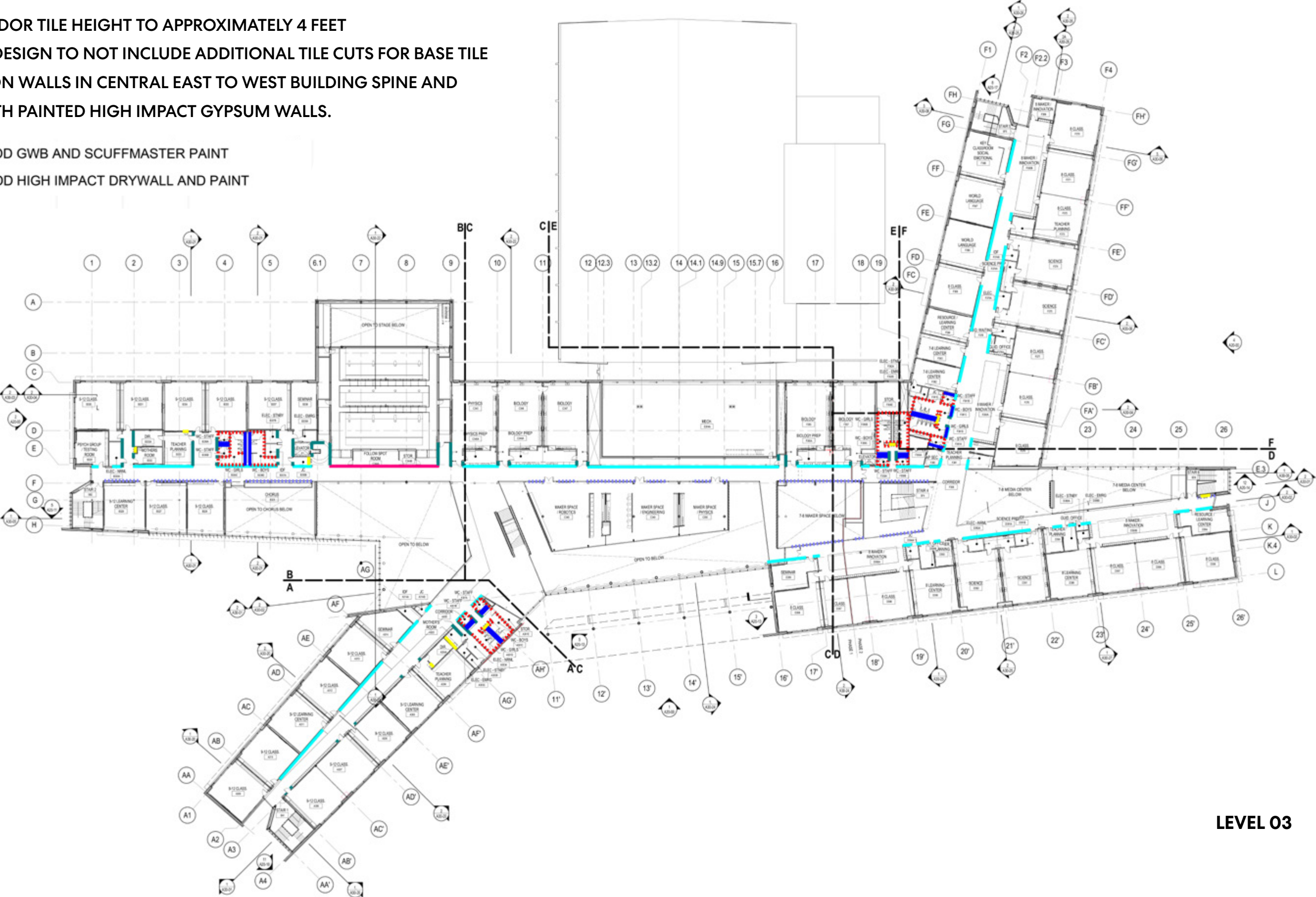


**VE STRATEGY:
SIGNIFY TRUGROVE**

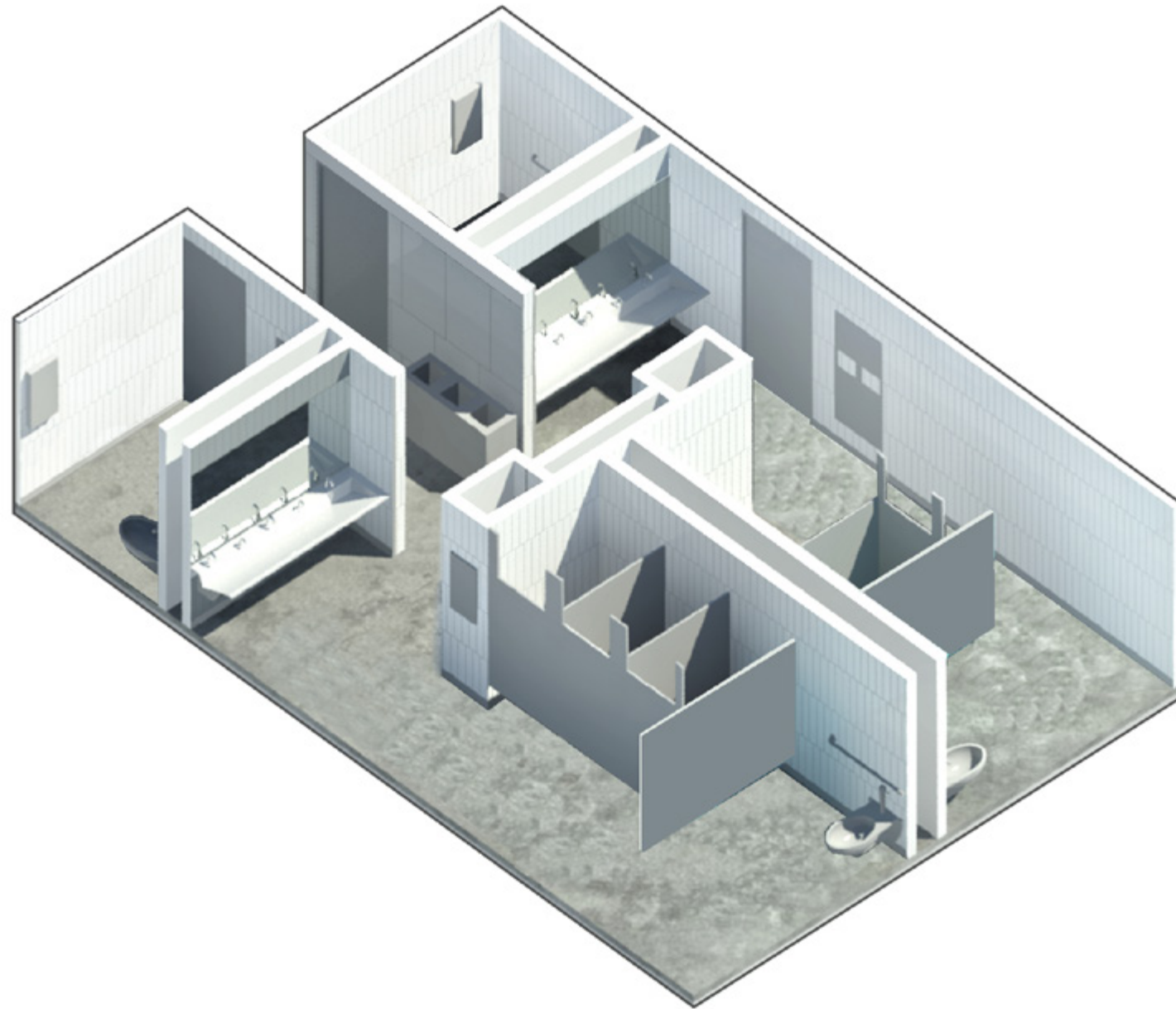
TILE COST REDUCTION STRATEGY

1. REDUCE CORRIDOR TILE HEIGHT TO APPROXIMATELY 4 FEET
2. SIMPLIFY TILE DESIGN TO NOT INCLUDE ADDITIONAL TILE CUTS FOR BASE TILE
3. REMOVE TILE ON WALLS IN CENTRAL EAST TO WEST BUILDING SPINE AND REPLACE IT WITH PAINTED HIGH IMPACT GYPSUM WALLS.

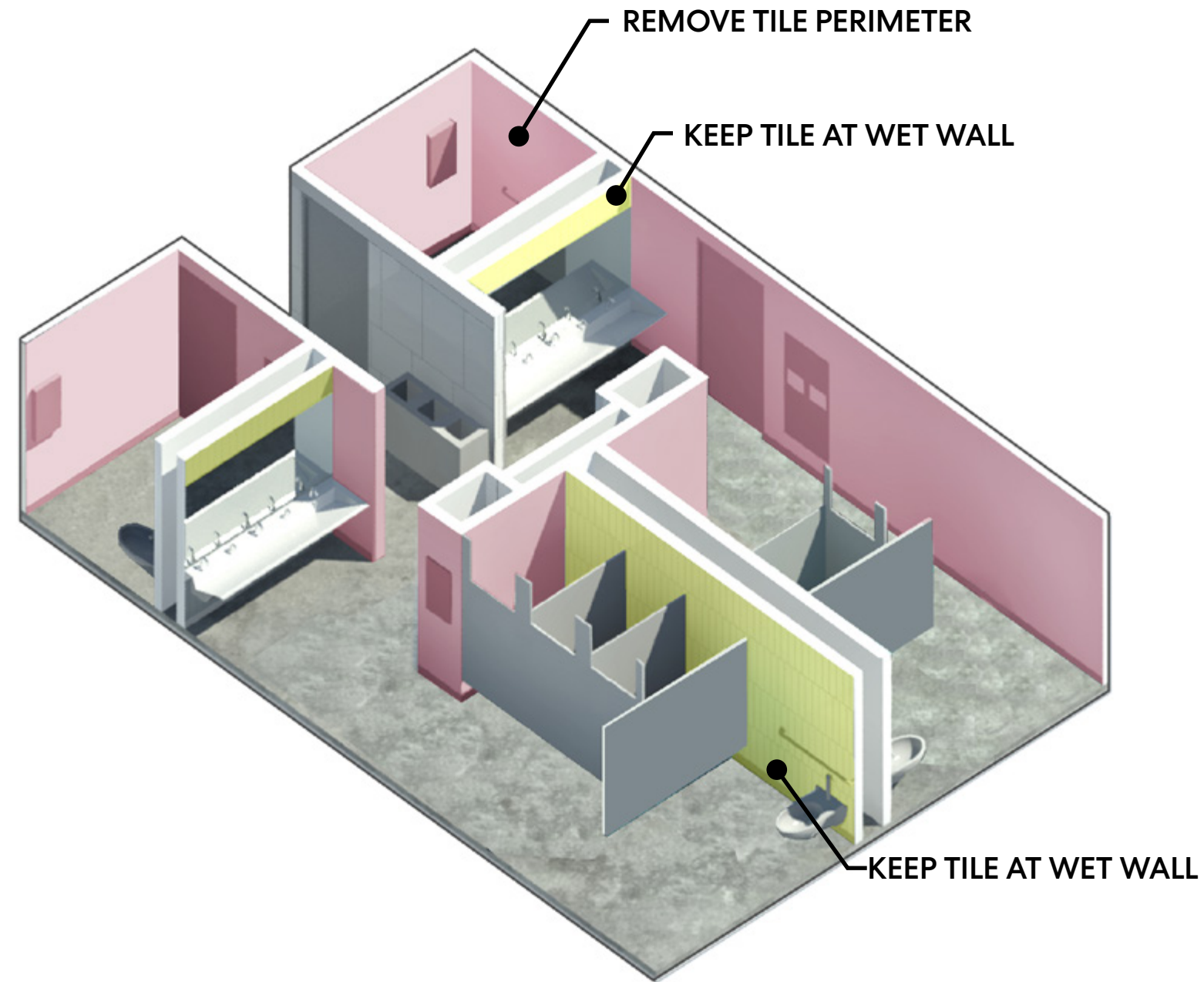
||||| REMOVE TILE - ADD GWB AND SCUFFMASTER PAINT
||||| REMOVE TILE - ADD HIGH IMPACT DRYWALL AND PAINT



TILE COST REDUCTION STRATEGY



60% PRICING SET



VE STRATEGY

ACOUSTIC PANEL COST REDUCTION STRATEGY



FABRIC WRAPPED
ACOUSTIC PANELS

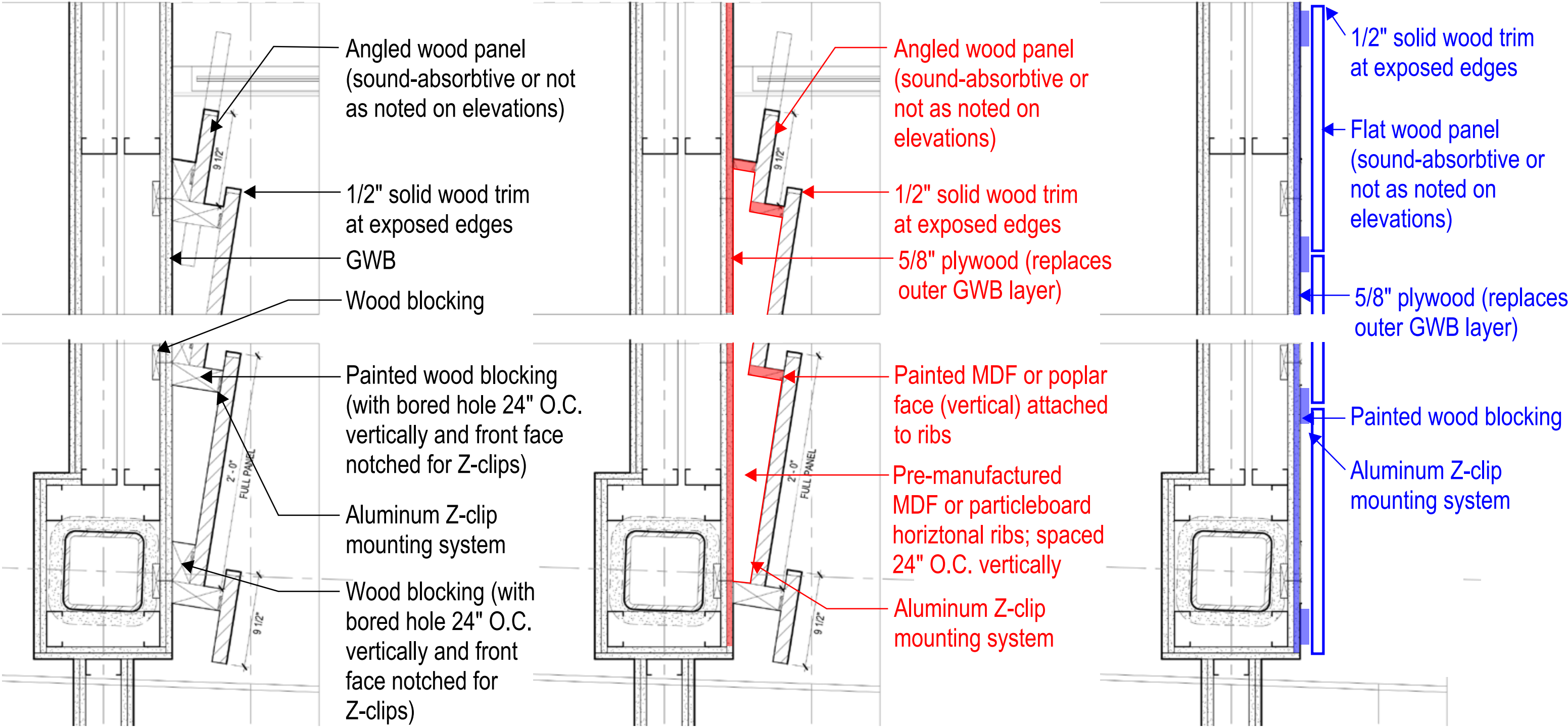
CURRENT DESIGN:
DECOUSICS - AIRRENEW HIR#4

VE STRATEGY:
ARMSTRONG CUSTOM
SOUNDSOAK WALL SYSTEM



FINISHES - HIGH SCHOOL MAKER SPACE

WOOD ACOUSTIC PANEL COST REDUCTION STRATEGY



CURRENT DESIGN



**VE STRATEGY OPTION A:
LAPPED PANELS**

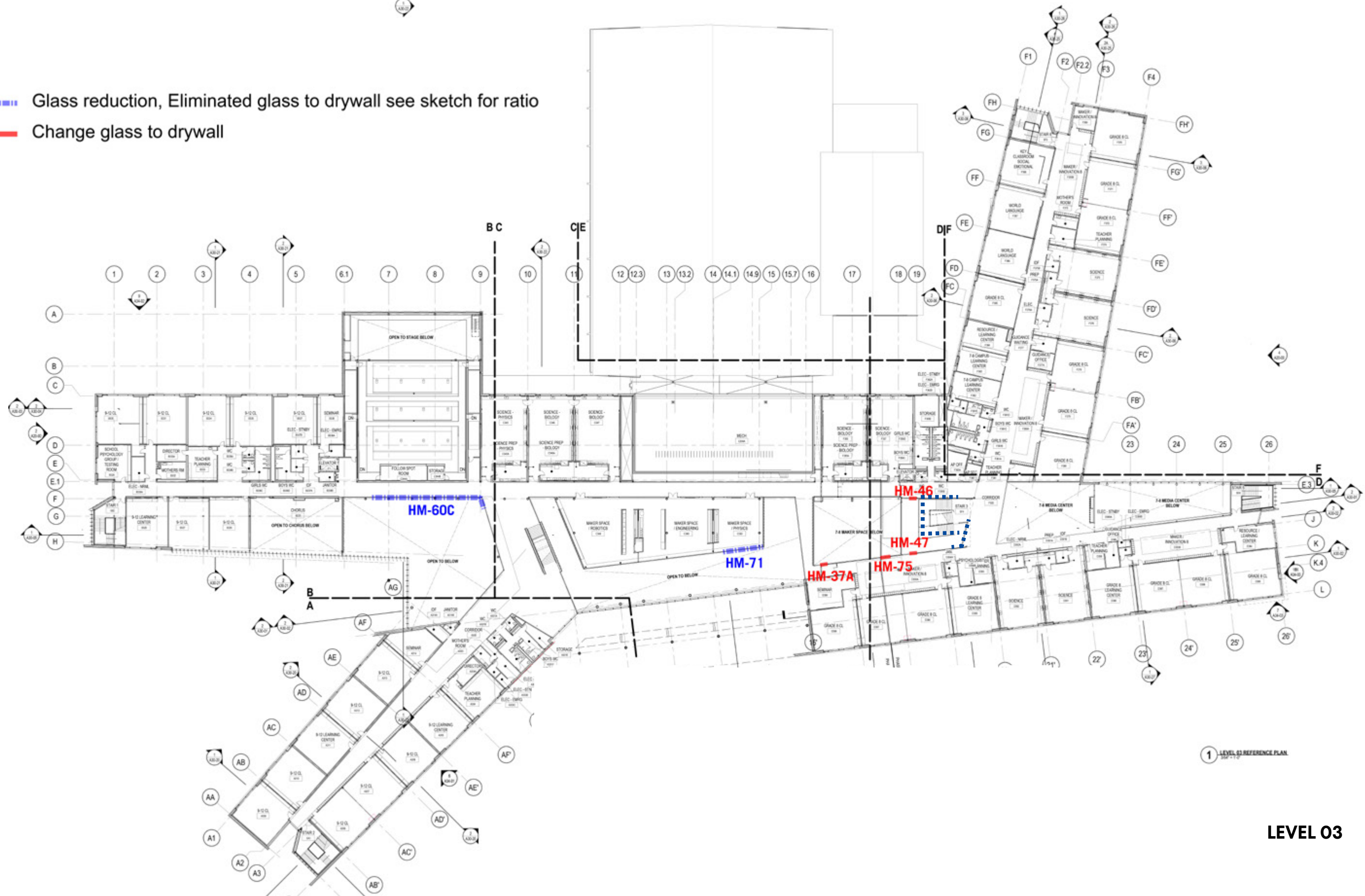
**VE STRATEGY OPTION B:
FLAT PANELS**

CORRIDOR COST REDUCTION STRATEGY



FULL HEIGHT GLASS WALL COST REDUCTION STRATEGY

-  Glass reduction, Eliminated glass to drywall see sketch for ratio
-  Change glass to drywall



1 LEVEL 03 REFERENCE PLAN

FULL HEIGHT GLASS WALL COST REDUCTION STRATEGY

CD 60% PRICING SET AT HIGH SCHOOL LOBBY



FULL HEIGHT GLASS WALL COST REDUCTION STRATEGY

VE STRATEGY AT HIGH SCHOOL LOBBY



FULL HEIGHT GLASS WALL COST REDUCTION STRATEGY

CD 60% PRICING SET AT LEVEL 04 CORRIDOR

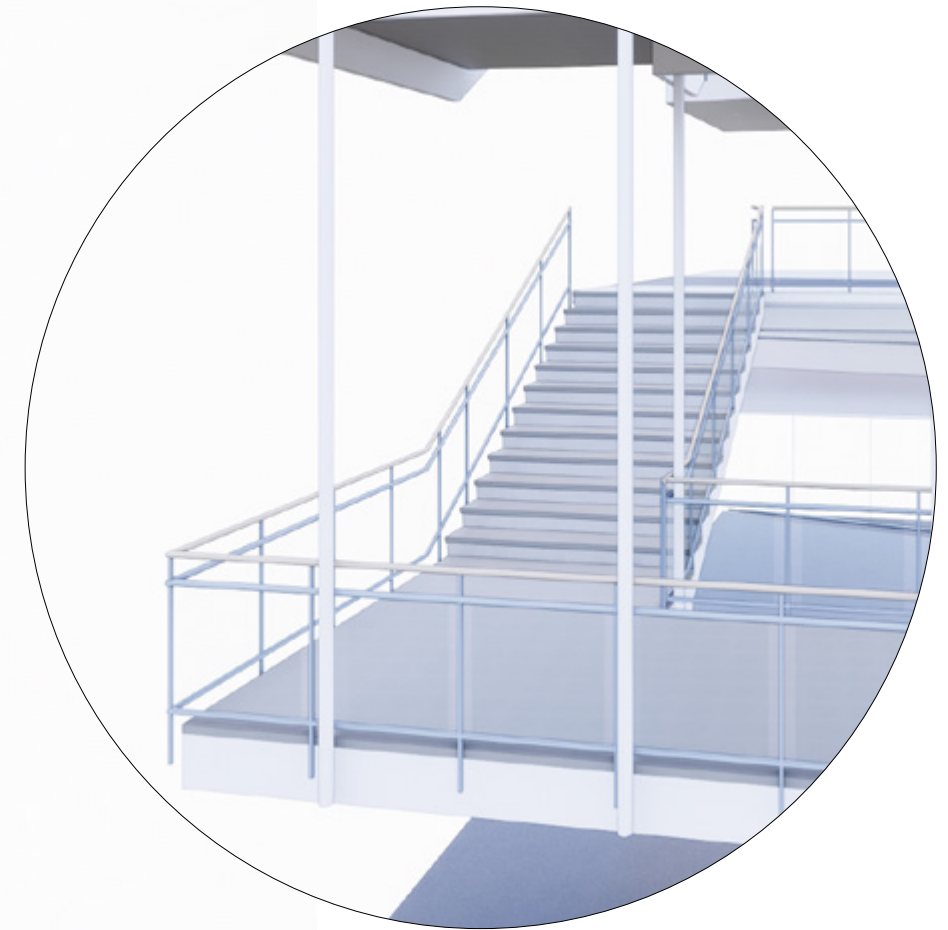
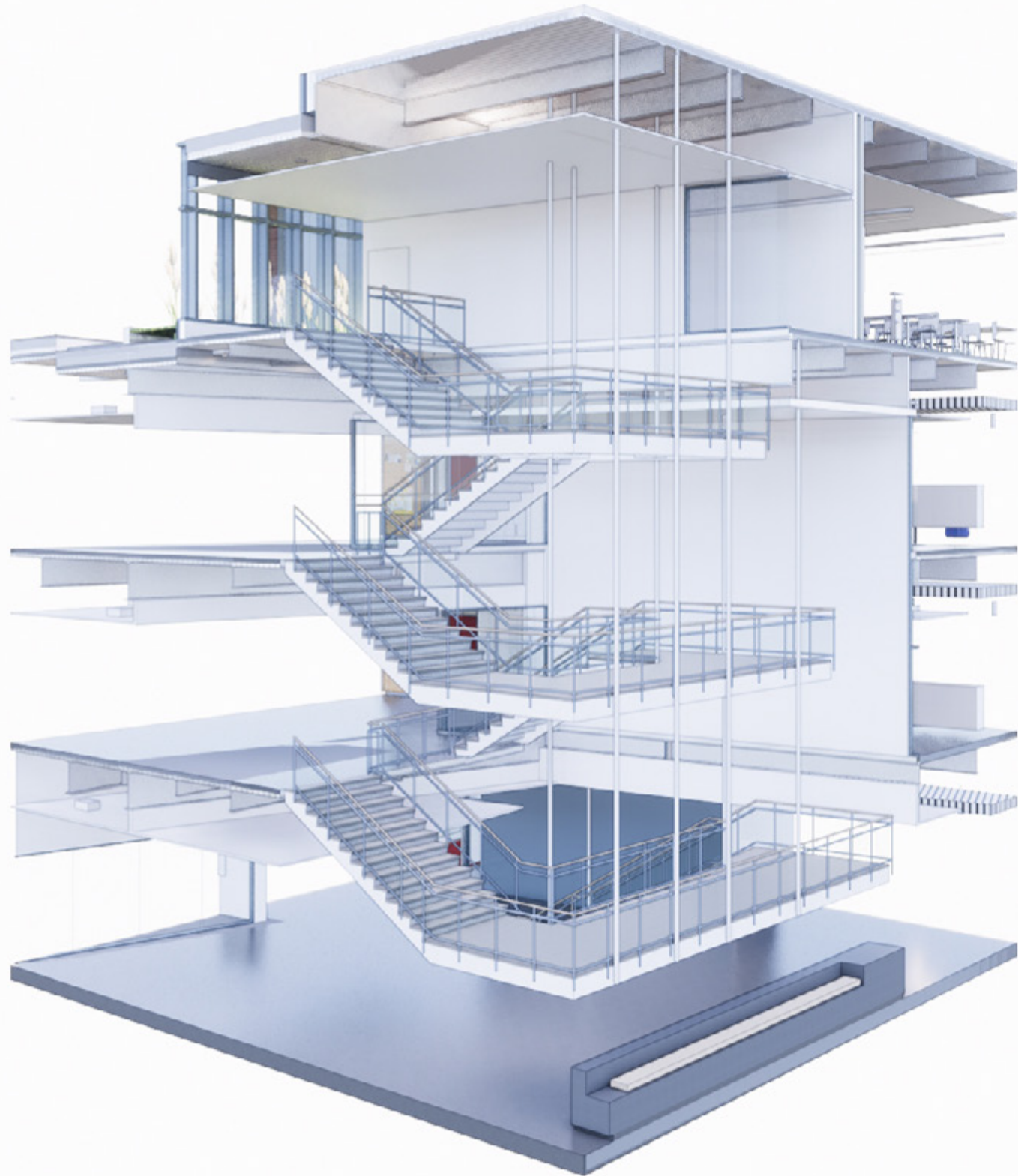


FULL HEIGHT GLASS WALL COST REDUCTION STRATEGY

VE STRATEGY AT LEVEL 04 CORRIDOR



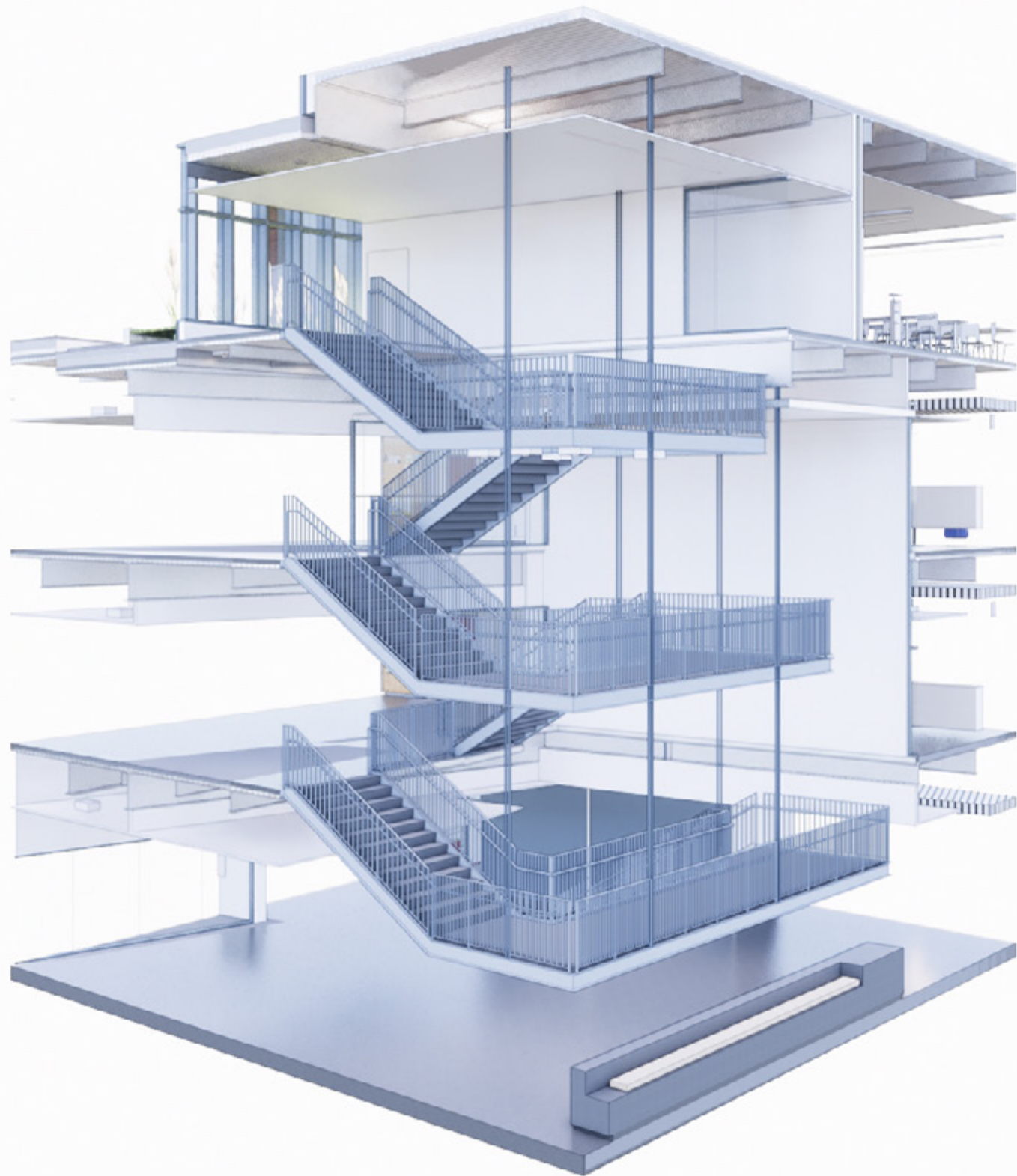
MIDDLE SCHOOL STAIRS COST REDUCTION STRATEGY



CD 60% PRICING SET

MIDDLE SCHOOL STAIRS COST REDUCTION STRATEGY

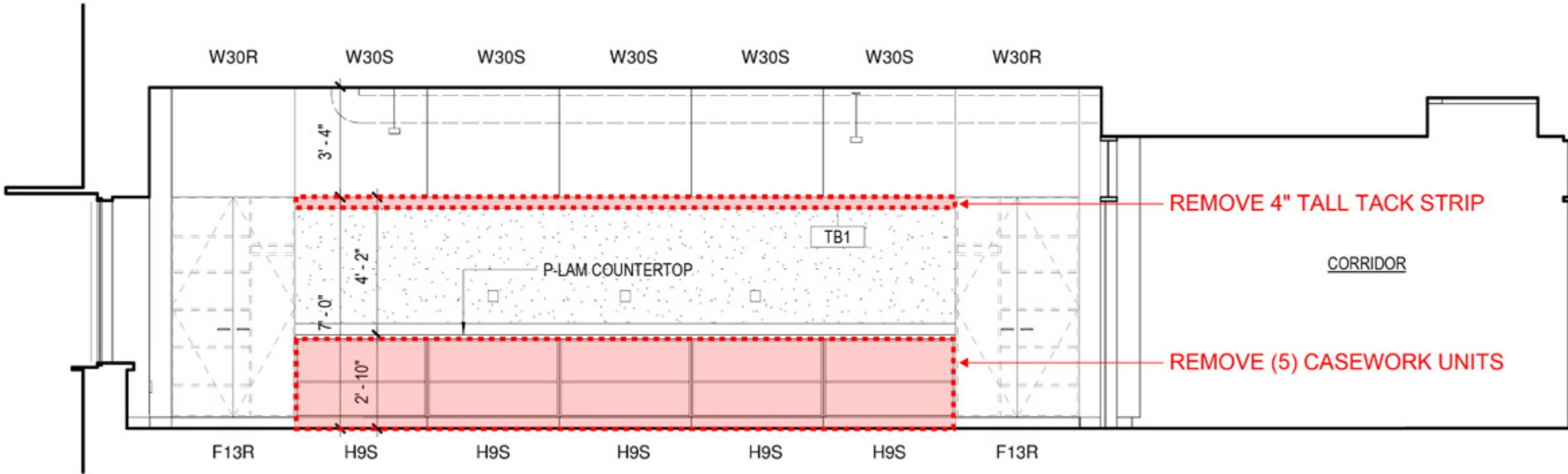
VE STRATEGY: GLAZED GUARDRAIL TO BE CHANGED TO METAL GUARDRAIL SYSTEM
TREADS AND LANDING TO BE CHANGED FROM GFRC TO RESILIENT TREADS AND LANDINGS



VE STRATEGY

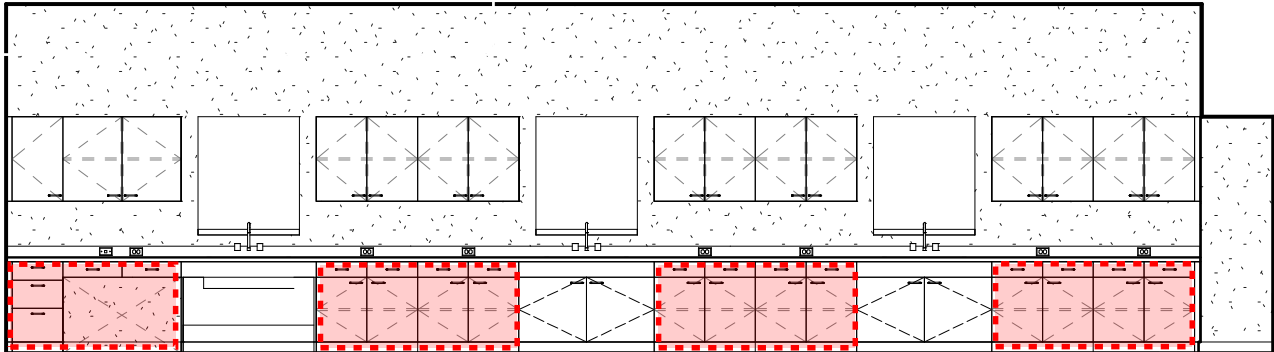
CASEWORK COST REDUCTION STRATEGY

VE STRATEGY
GENERAL
& SPED CLASSROOMS



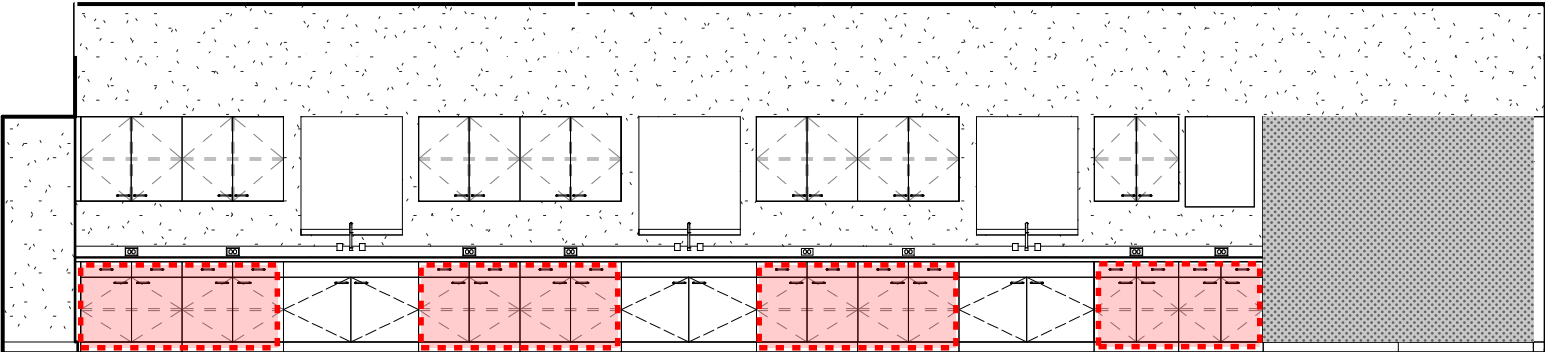
CASEWORK COST REDUCTION STRATEGY

MS SCIENCE - NORTH



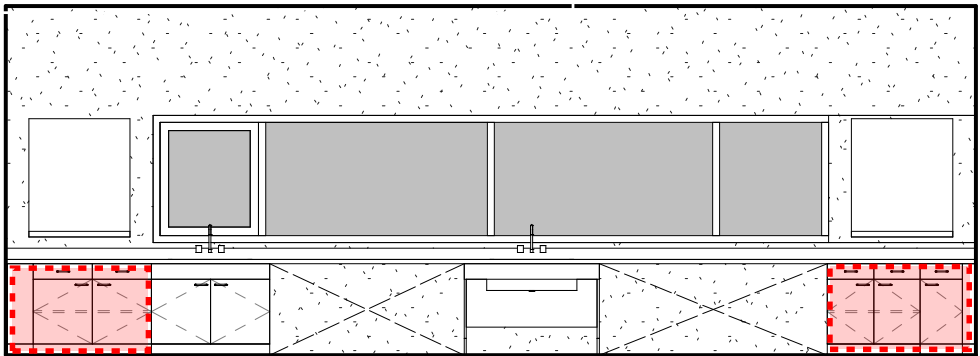
REMOVE ALL HIGH BASE CABINETS IN MIDDLE SCHOOL SCIENCE

MS SCIENCE - SOUTH



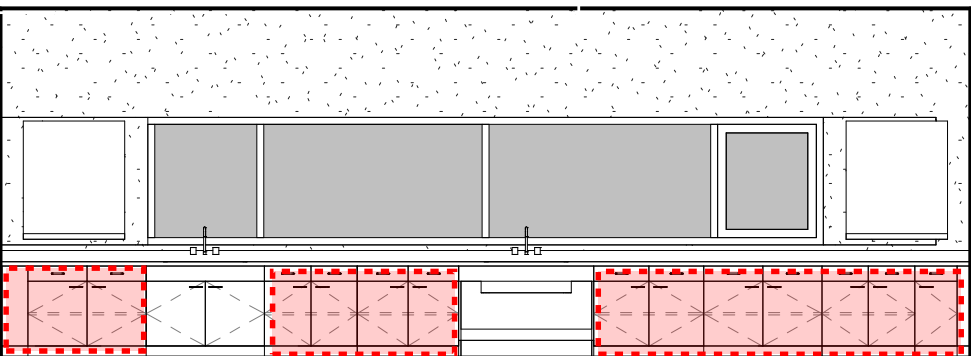
REMOVE ALL HIGH BASE CABINETS IN MIDDLE SCHOOL SCIENCE

HS SCIENCE BIOLOGY - NORTH



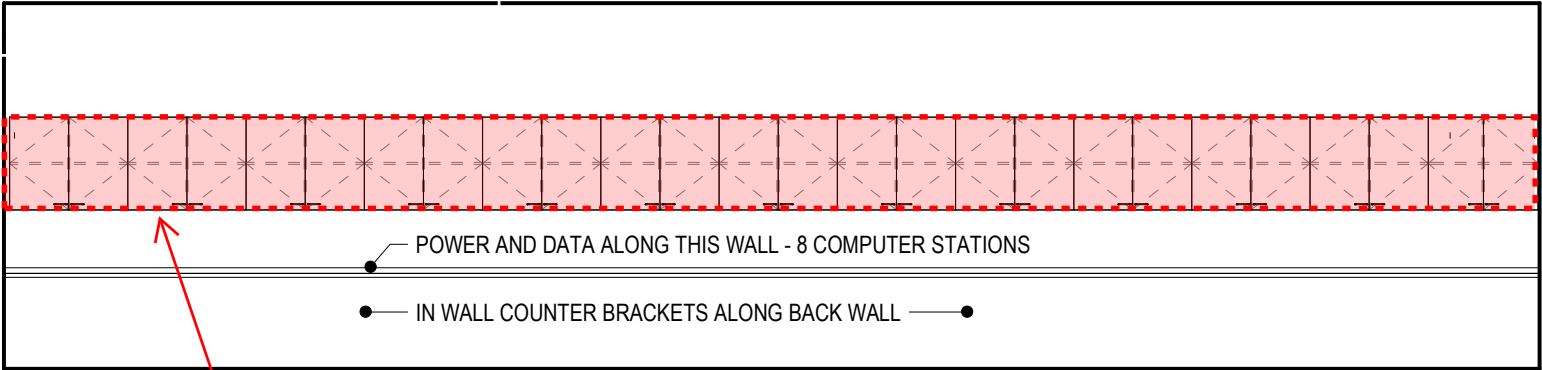
REMOVE ALL HIGH BASE CABINETS ON NORTH WALLS IN BIOLOGY CLASSROOMS

HS SCIENCE CHEMISTRY - NORTH



REMOVE ALL HIGH BASE CABINETS ON NORTH WALLS IN CHEMISTRY CLASSROOMS

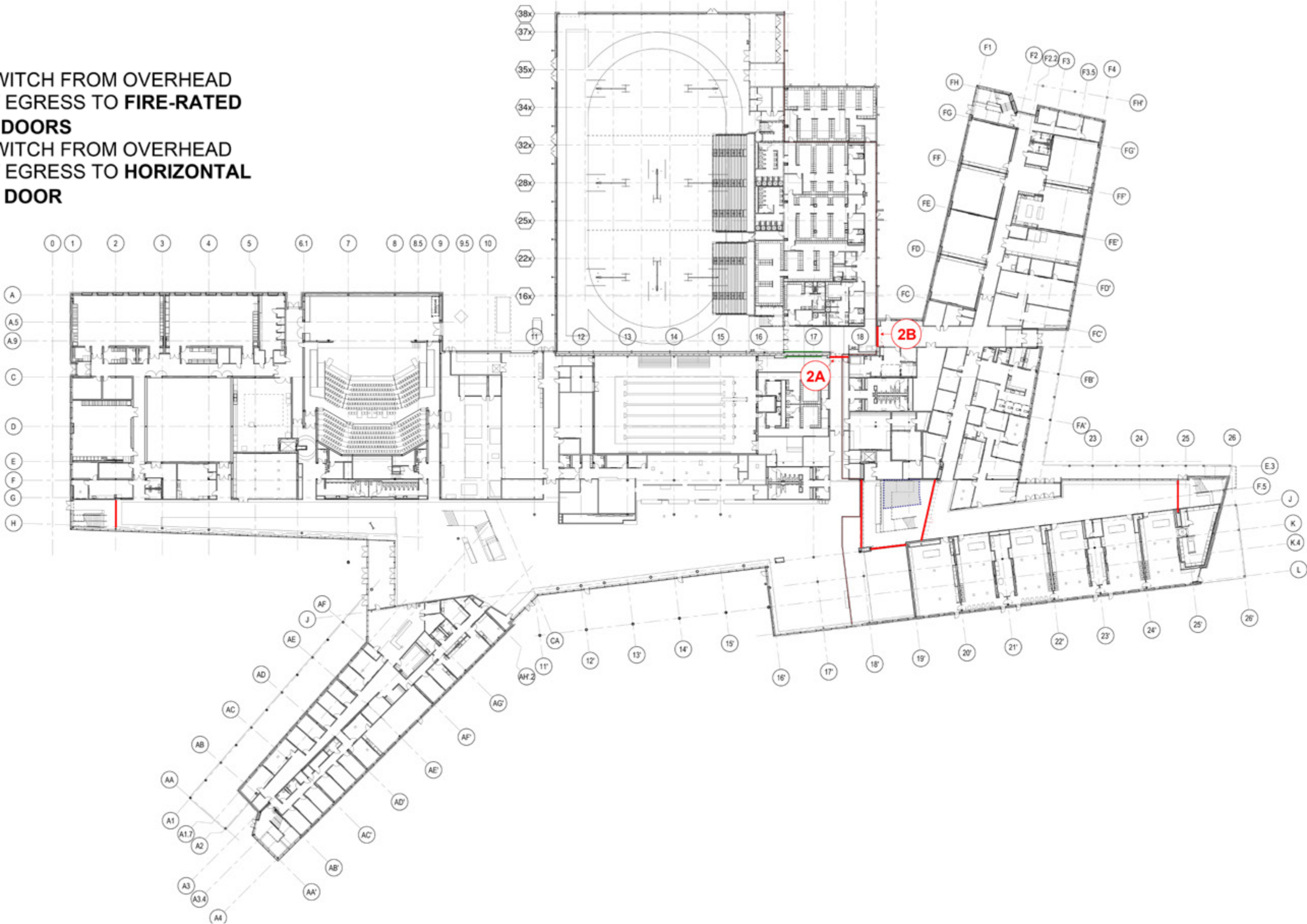
DIGITAL ART - WEST



REMOVE ALL UPPER CABINETS IN DIGITAL ART AND REPLACE WITH SHELVING

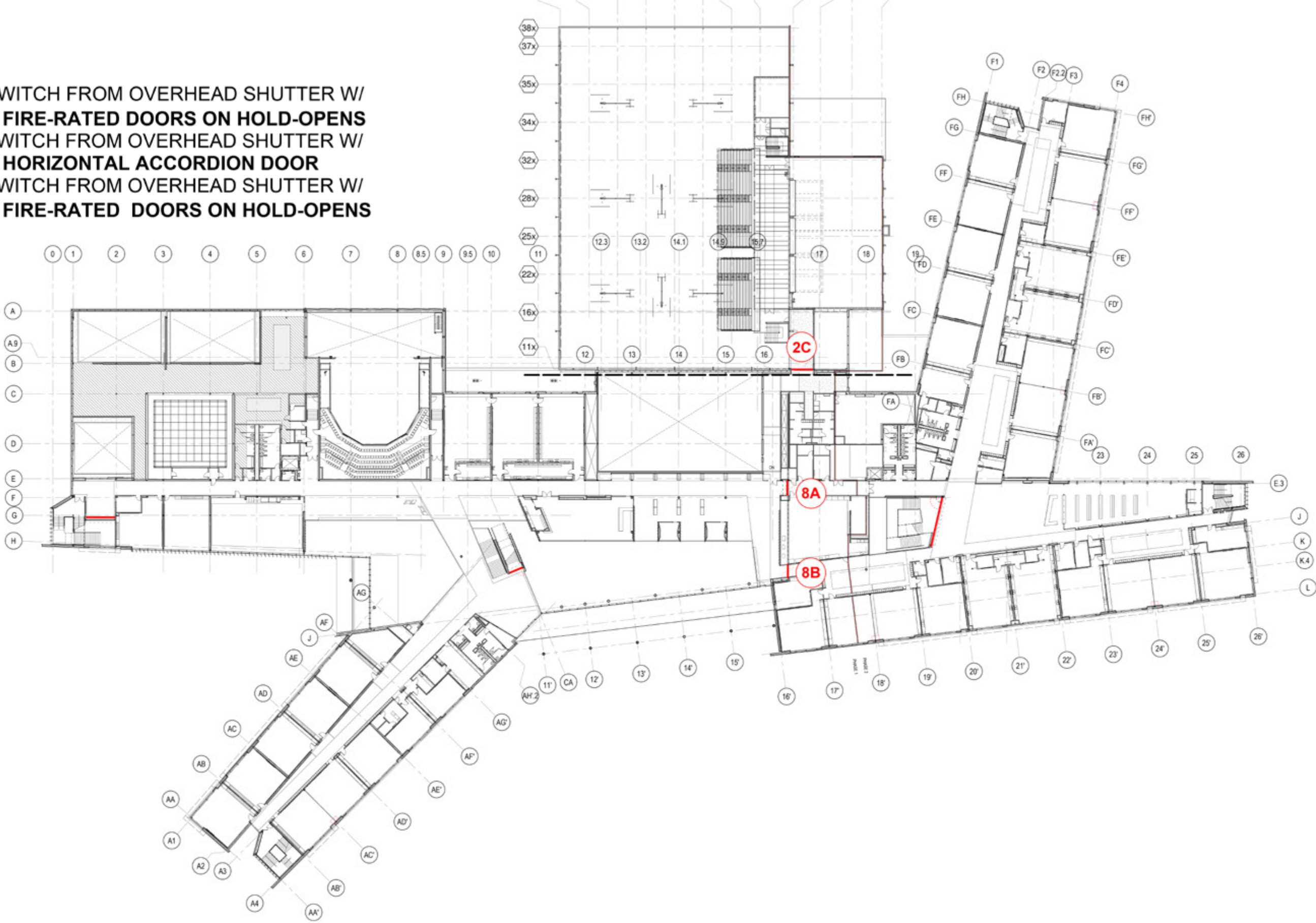
FIRE CONTROL DOORS COST REDUCTION STRATEGY

DOOR 2A- SWITCH FROM OVERHEAD SHUTTER W/ EGRESS TO **FIRE-RATED HOLD-OPEN DOORS**
DOOR 2B- SWITCH FROM OVERHEAD SHUTTER W/ EGRESS TO **HORIZONTAL ACCORDION DOOR**



FIRE CONTROL DOORS COST REDUCTION STRATEGY

DOOR 2C- SWITCH FROM OVERHEAD SHUTTER W/
EGRESS TO **FIRE-RATED DOORS ON HOLD-OPENS**
DOOR 8A- SWITCH FROM OVERHEAD SHUTTER W/
EGRESS TO **HORIZONTAL ACCORDION DOOR**
DOOR 8B- SWITCH FROM OVERHEAD SHUTTER W/
EGRESS TO **FIRE-RATED DOORS ON HOLD-OPENS**



MISC. SCOPE ADJUSTMENTS

- Eliminate classroom door sidelights
- Reduce overall catwalk area, replace stage stair with ladders
- Replace all wall tile epoxy grout with polymer grout
- Change Wenger Acoustic cabinets to standard with solid doors
- Remove rear counter data in all classrooms
- Reduce data/AV teacher input locations in classrooms from 2 to 1
- Eliminate all classroom audio systems
- Eliminate all operable classroom partitions