

BELMONT MIDDLE AND HIGH SCHOOL BUILDING COMMITTEE

AUGUST 28 2019

Perkins&Will

VE STRATEGIES - EXTERIOR

- 1. REDUCE CW AT STAIR ENDS AND ADD BRICK/SIMPLIFY CANTILEVERED PLANES**
- 2. CHANGE BUILDING BASE FROM FIBER CEMENT PANELS TO MASONRY**
- 3. REMOVE OUTDOOR POND TERRACE (2ND LEVEL) AT CENTRAL DINING AREA**
- 4. SIMPLIFY ALL CURTAINWALL (5' MODULE). MINIMIZE NUMBER OF LITES**
- 5. REVISE VERTICAL SUNSCREEN CW AT HIGH SCHOOL DROP-OFF AREA**
- 6. REMOVE ALL HORIZONTAL SUNSCREENS EXCEPT FOR SOUTH FACING**
- 7. REDUCE GLAZING AREA AT CLASSROOM WINDOWS**
- 8. REMOVE MIDDLE SCHOOL CANOPY**
- 9. REDUCE FIRST FLOOR WINDOWS AT MUSIC / BAND FACADE (AREA B)**
- 10. REMOVE ROOF TERRACE ON FOURTH FLOOR**
- 11. REMOVE SKYLIGHTS**
- 12. NO REPLACEMENT OF KALWALL AT EXISTING FIELDHOUSE**

ITEM 01 : REDUCE CW AT STAIR ENDS

CURRENT DESIGN

- ADD BRICK IN LIEU OF CW GLAZING FOR MAJORITY OF FACADE
- NO BRICK CANTILEVERS @ STAIR ENDS



ITEM 01 : REDUCE CW AT STAIR ENDS

VE STRATEGY

- ADD BRICK IN LIEU OF CW GLAZING FOR MAJORITY OF FACADE
- NO BRICK CANTILEVERS @ STAIR ENDS



ITEM 01 : REDUCE CW AT STAIR ENDS

- ADD BRICK IN LIEU OF CW GLAZING FOR MAJORITY OF FACADE
- NO BRICK CANTILEVERS @ STAIR ENDS

VE STRATEGY



ITEM 02 : CHANGE BUILDING BASE MATERIAL

• CONSIDER MASONRY/PRECAST IN LIEU OF CEMENT PANEL



ITEM 02 : CHANGE BUILDING BASE MATERIAL

• **CONSIDER MASONRY/PRECAST IN LIEU OF CEMENT PANEL**



ITEM 03 : REMOVE OUTDOOR POND TERRACE (2ND LEVEL) AT CENTRAL DINING AREA

CURRENT DESIGN



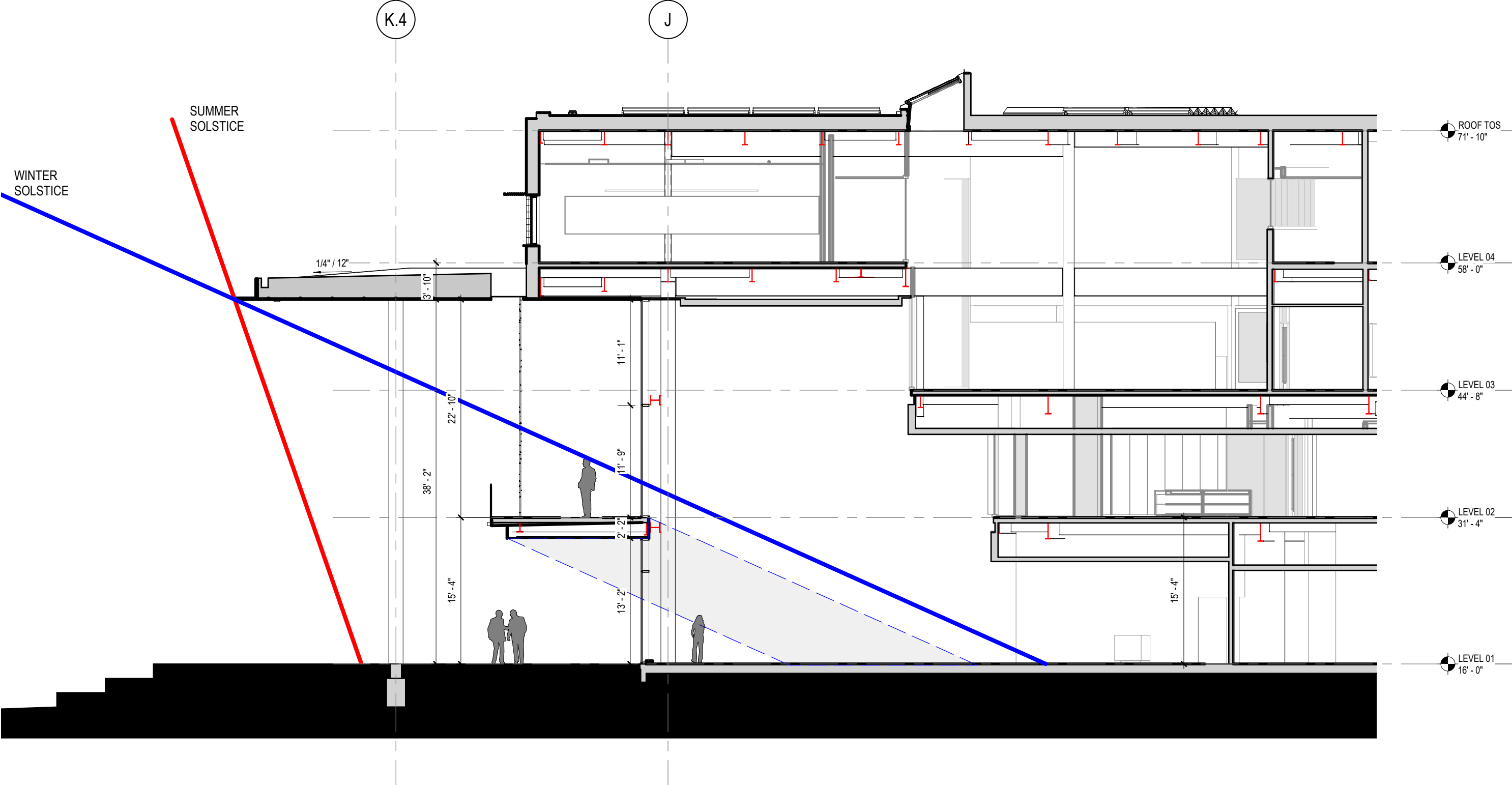
ITEM 03 : REMOVE OUTDOOR POND TERRACE (2ND LEVEL) AT CENTRAL DINING AREA

VE STRATEGY



ITEM 03 : REMOVE OUTDOOR POND TERRACE (2ND LEVEL) AT CENTRAL DINING AREA

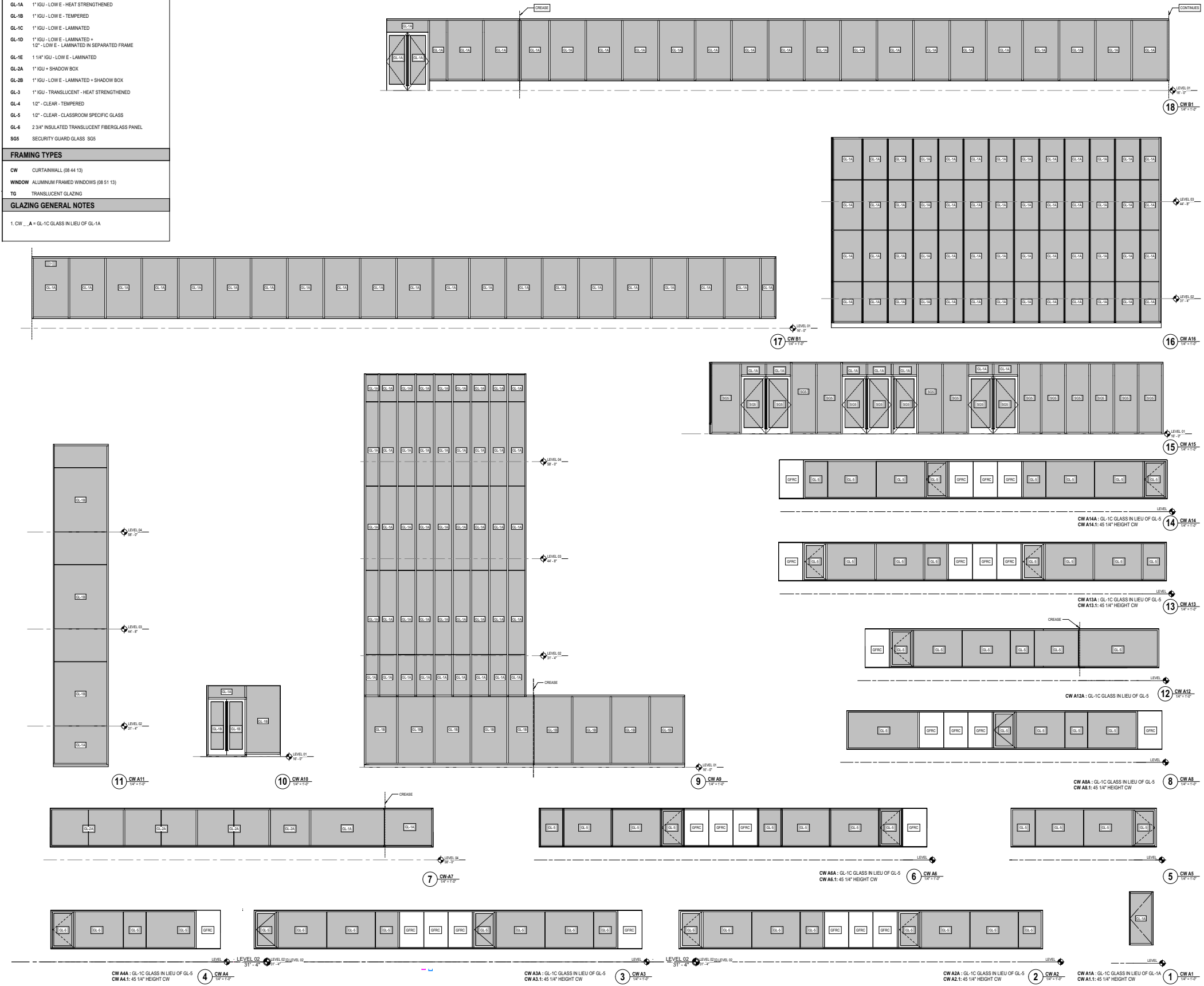
SHADING POTENTIAL



ITEM 04 : SIMPLIFY ALL CURTAINWALL AREAS

- USING 5'-0" MODULE
- MINIMIZE NUMBER OF LITES

GLAZING LEGEND	
GL-1A	1" IGU - LOW E - HEAT STRENGTHENED
GL-1B	1" IGU - LOW E - TEMPERED
GL-1C	1" IGU - LOW E - LAMINATED
GL-1D	1" IGU - LOW E - LAMINATED + 12" - LOW E - LAMINATED IN SEPARATED FRAME
GL-1E	1 1/4" IGU - LOW E - LAMINATED
GL-2A	1" IGU + SHADOW BOX
GL-2B	1" IGU - LOW E - LAMINATED + SHADOW BOX
GL-3	1" IGU - TRANSLUCENT - HEAT STRENGTHENED
GL-4	1/2" - CLEAR - TEMPERED
GL-5	1/2" - CLEAR - CLASSROOM SPECIFIC GLASS
GL-6	2 3/4" INSULATED TRANSLUCENT FIBERGLASS PANEL
SGS	SECURITY GUARD GLASS SGS
FRAMING TYPES	
CW	CURTAINWALL (08 44 13)
WINDOW	ALUMINUM FRAMED WINDOWS (08 51 13)
TG	TRANSLUCENT GLAZING
GLAZING GENERAL NOTES	
1. CW _A = GL-1C GLASS IN LIEU OF GL-1A	



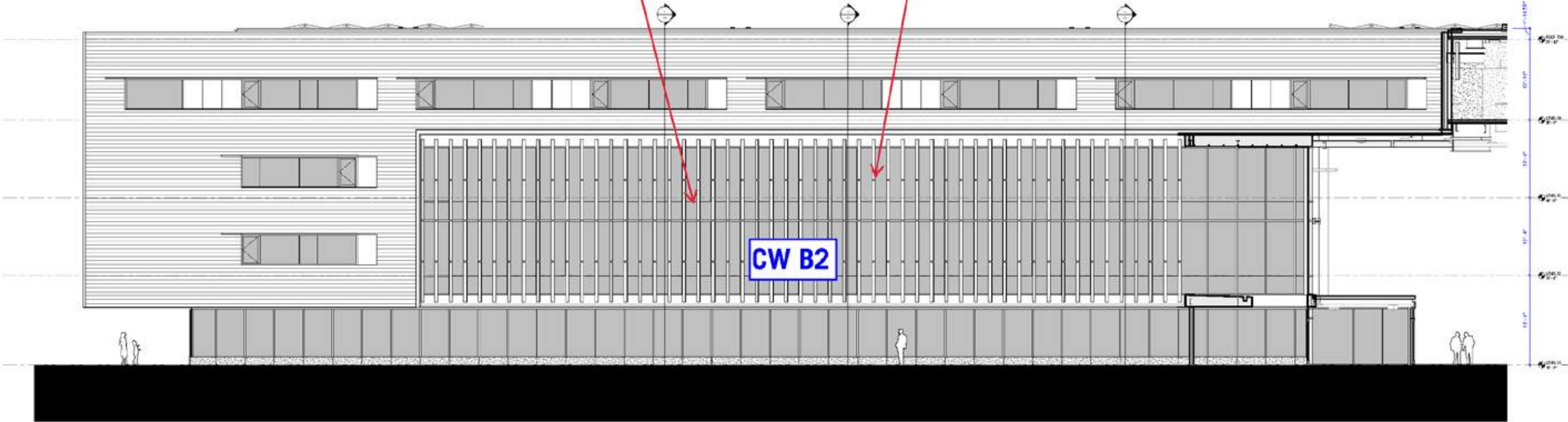
ITEM 05 : REVISE VERTICAL SUNSCREEN CW @ HIGH SHOOL DROP-OFF AREA

VE STRATEGY (OPTION 1)

ALL BASELINE HORIZONTAL MULLIONS GO FROM SSG TO EXPOSED CAP ON CW B2.

REDUCE NUMBER OF VERTICAL SUNSCREEN PANELS FROM 6 TO 4 PER COLUMN. ALL PANELS ARE UNIFORM HEIGHT OF 6'-10" PER PANEL (VERIFY MAX HEIGHT). TOTAL CW HEIGHT @ 25'-6"

REDUCES SUNSHADE PANEL COUNT BY 106



ITEM 05 : REVISE VERTICAL SUNSCREEN CW @ HIGH SHOOL DROP-OFF AREA

VE STRATEGY (OPTION 1)



ITEM 05 : REVISE VERTICAL SUNSCREEN CW @ HIGH SHOOL DROP-OFF AREA

VE STRATEGY (OPTION 2)

INTRODUCE CERAMIC FRIT ON 104 GLAZING UNITS (42% OF CW B2). FRIT DISCUSSION IN ITEM 08.

REDUCE NUMBER OF VERTICAL SUNSCREEN PANELS BY 50% (EVERY 5'-0"). CAN BE CLIPPED TO VERTICAL MULLIONS.

REDUCES SUNSHADE PANEL COUNT BY 104



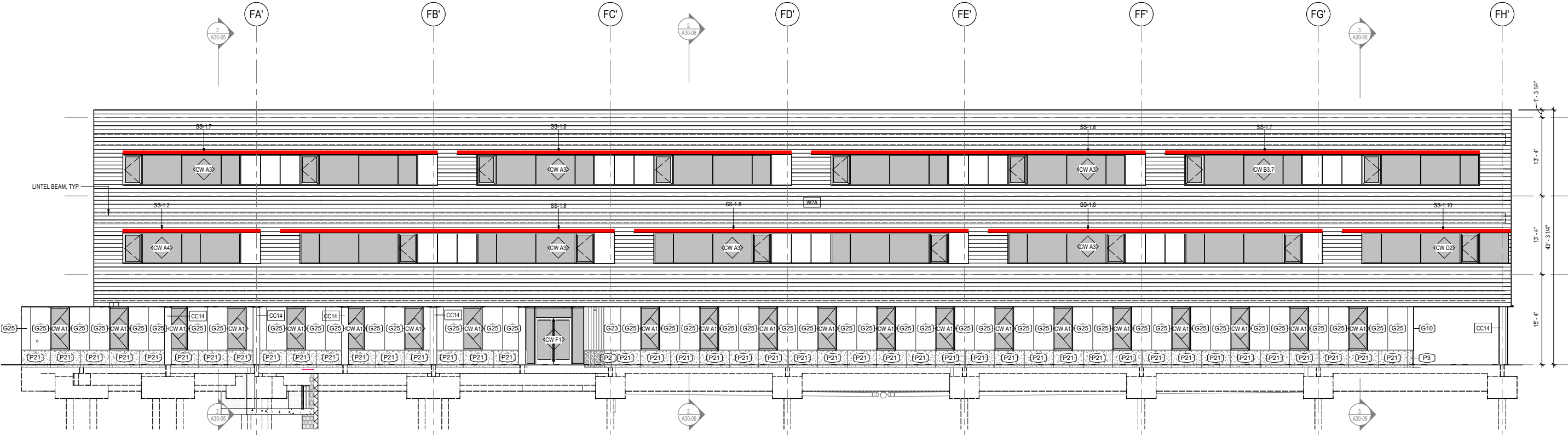
ITEM 05 : REVISE VERTICAL SUNSCREEN CW @ HIGH SHOOOL DROP-OFF AREA

VE STRATEGY (OPTION 2)



ITEM 06 : REMOVE ALL HORIZONTAL SUNSCREENS EXCEPT FOR SOUTH FACING

HORIZONTAL SUNSCREEN LINEAR SQ.FT REMOVED: 442' LINEAR FEET



ITEM 07 : REDUCE GLAZING AREA @ CLASSROOM WINDOWS

CURRENT DESIGN



ITEM 07 : REDUCE GLAZING AREA @ CLASSROOM WINDOWS

VE STRATEGY



ITEM 07 : REDUCE GLAZING AREA @ CLASSROOM WINDOWS



ITEM 07 : REDUCE GLAZING AREA @ CLASSROOM WINDOWS



ITEM 07 : REDUCE GLAZING AREA @ CLASSROOM WINDOWS

CURRENT DESIGN



ITEM 07 : REDUCE GLAZING AREA @ CLASSROOM WINDOWS

VE STRATEGY



ITEM 08 : REMOVE MIDDLE SCHOOL CANOPY

CURRENT DESIGN



ITEM 08 : REMOVE MIDDLE SCHOOL CANOPY

VE STRATEGY

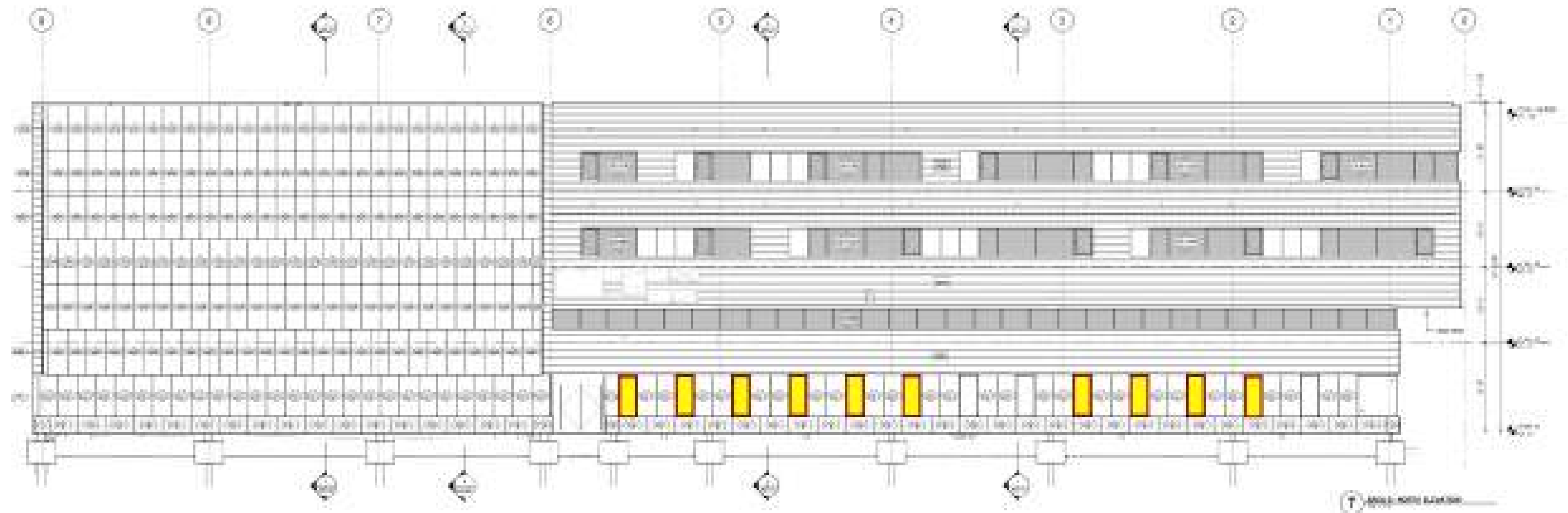


ITEM 08 : REMOVE MIDDLE SCHOOL CANOPY

VE STRATEGY

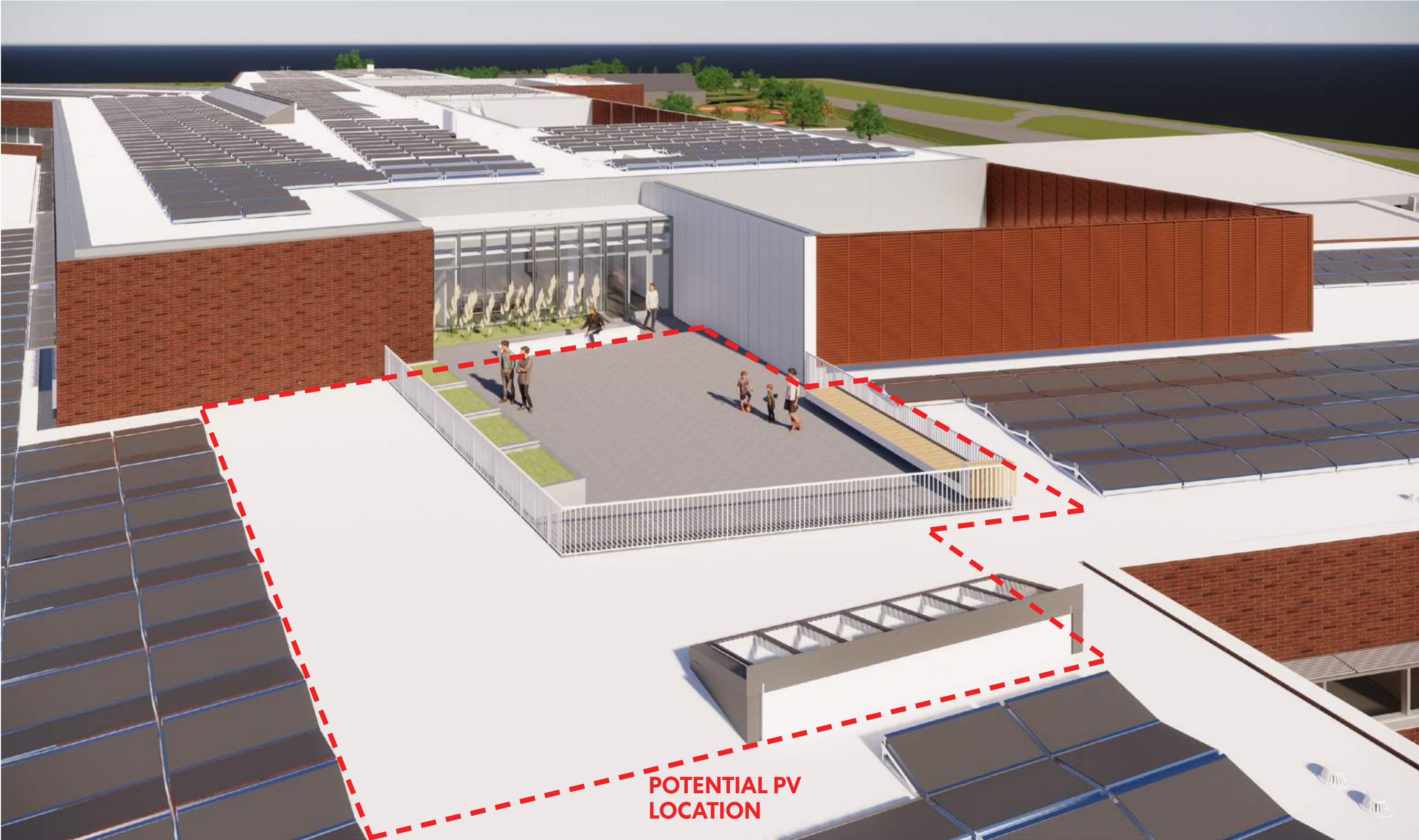


ITEM 09 : REDUCE FIRST FLOOR WINDOWS AT MUSIC / BAND FACADE (AREA B)



MASONRY IN LIEU OF CURTAIN WALL

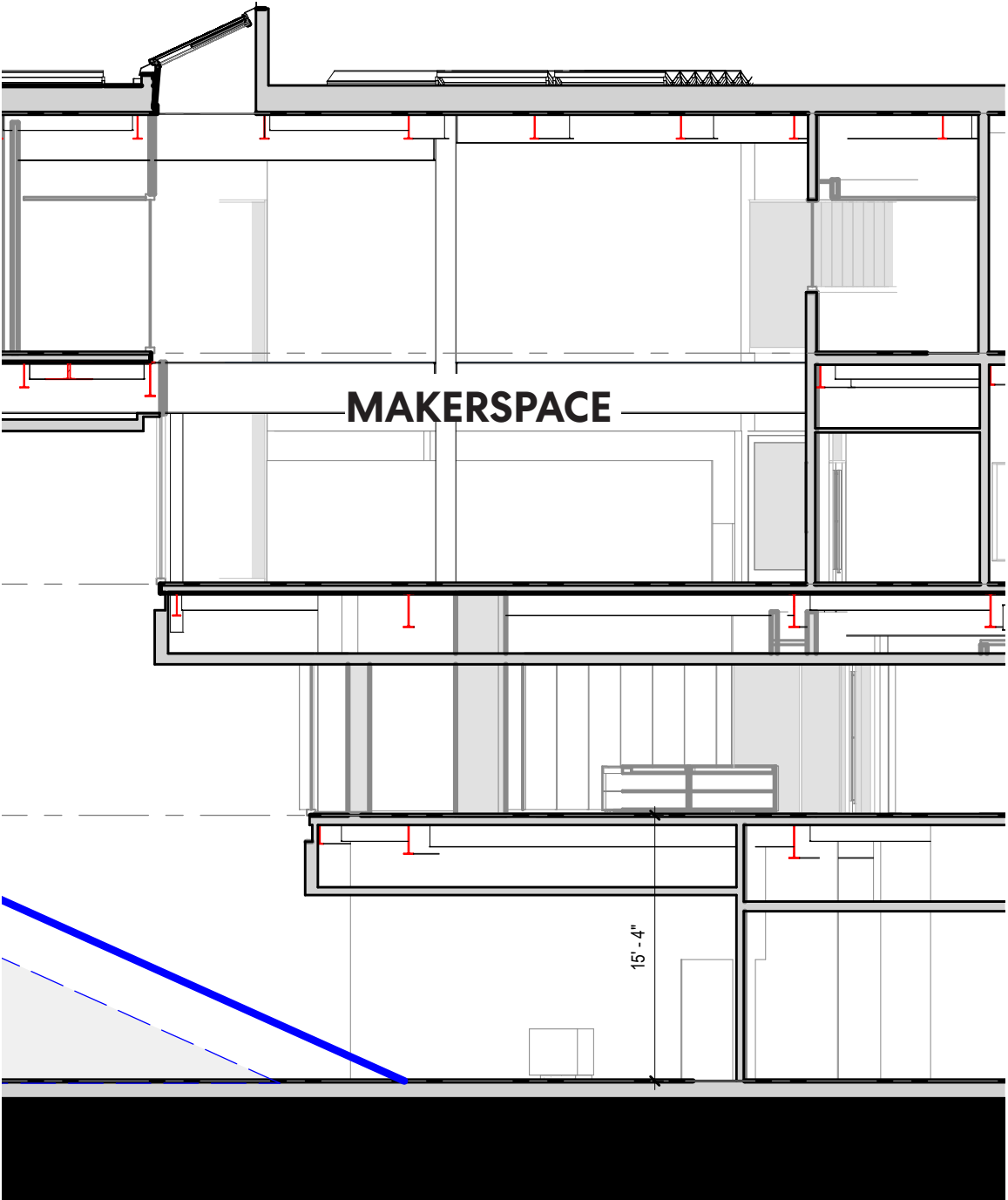
ITEM 10 : REMOVE ROOF TERRACE ON FOURTH FLOOR



ITEM 11 : REMOVE SKYLIGHTS

- REMOVE 100% OF SKYLIGHTS FROM MS AND HS ROOFS

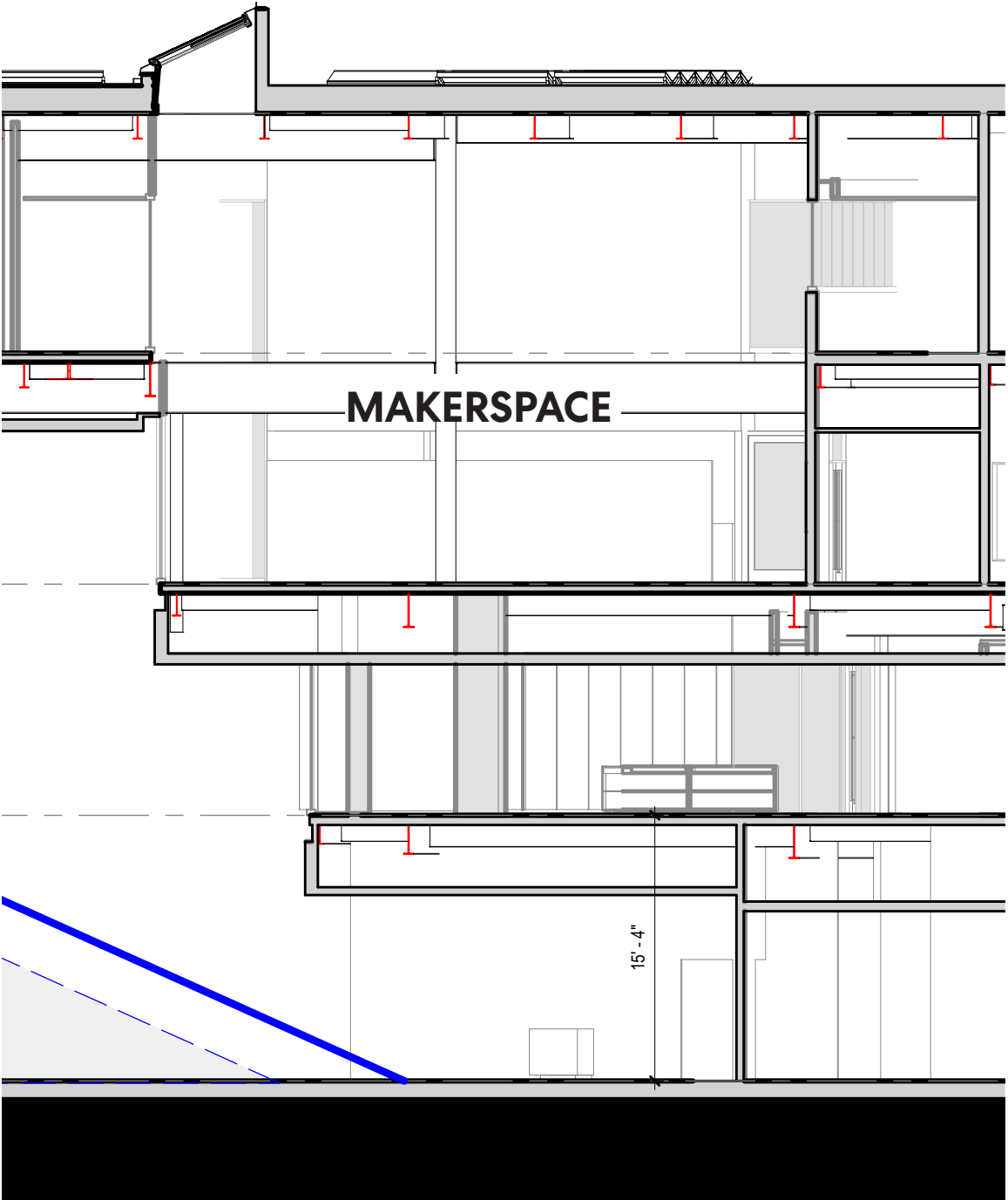
HIGH SCHOOL



ITEM 11 : REMOVE SKYLIGHTS

- REMOVE 100% OF SKYLIGHTS FROM MS AND HS ROOFS

HIGH SCHOOL



ITEM 11 : REMOVE SKYLIGHTS

- REMOVE 100% OF SKYLIGHTS FROM MS AND HS ROOFS



ITEM 11 : REMOVE SKYLIGHTS

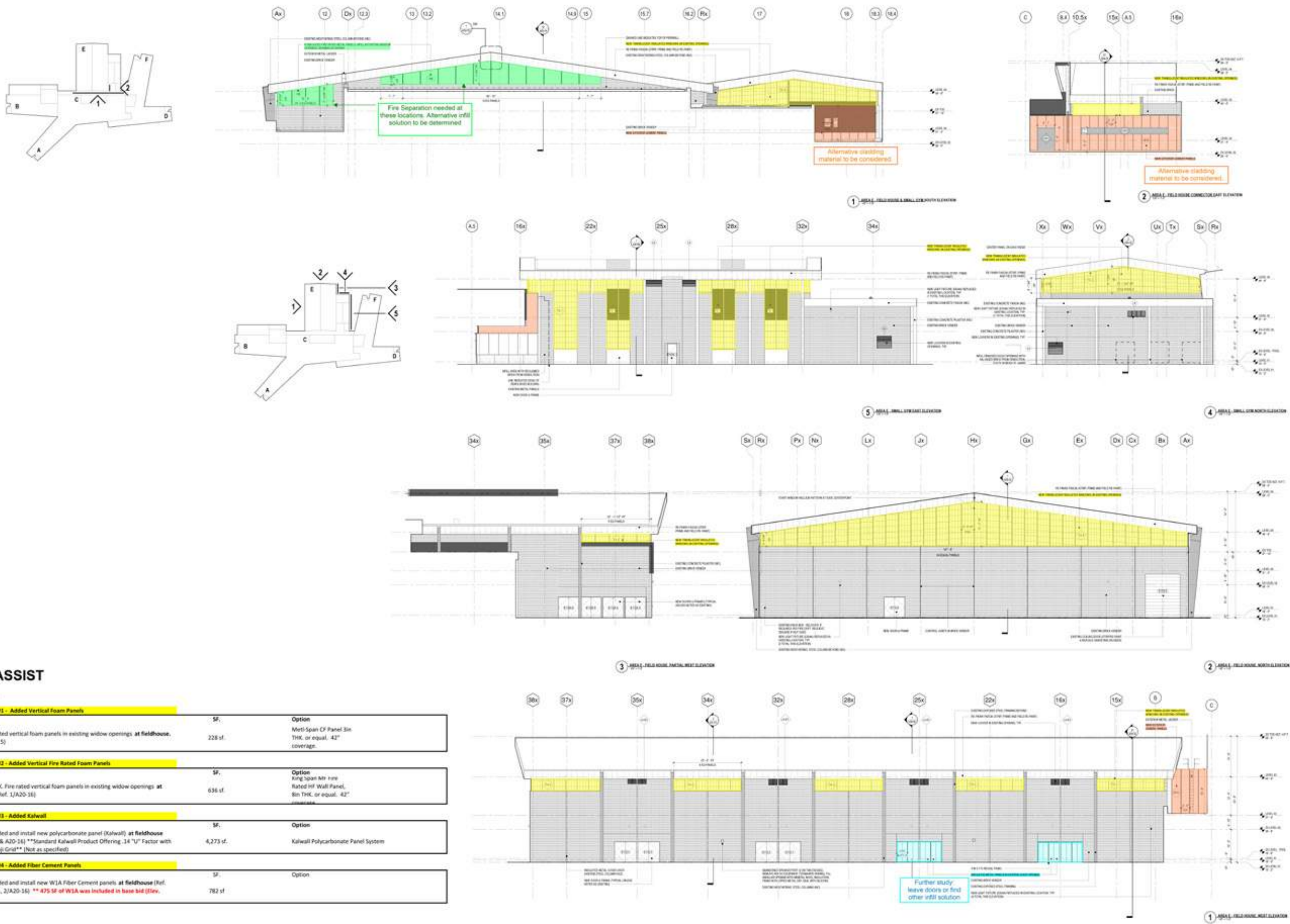
- REMOVE 100% OF SKYLIGHTS FROM MS AND HS ROOFS



MIDDLE SCHOOL

VE STRATEGY

ITEM 12: NO REPLACEMENT OF KALWALL AT EXISTING FIELDHOUSE



DESIGN ASSIST

NEW SCOPE:

NEW - Item #1 - Added Vertical Foam Panels		
1	Added insulated vertical foam panels in existing widow openings at fieldhouse. (Ref. 1/A20-15)	228 sf. Option: Multi-Span CF Panel 3in THK. or equal. 42" coverage.
NEW - Item #2 - Added Vertical Fire Rated Foam Panels		
2	Added 8" THK. Fire rated vertical foam panels in existing widow openings at fieldhouse. (Ref. 1/A20-16)	636 sf. Option: King Span Air Fire Rated Inf. Wall Panel, 8in THK. or equal. 42" coverage.
NEW - Item #3 - Added Kalwall		
3	Add to provided and install new polycarbonate panel (Kalwall) at fieldhouse (Ref. A20-15 & A20-16) **Standard Kalwall Product Offering .14 "U" Factor with 12" x 24" Shoji Grid** (Not as specified)	4,273 sf. Option: Kalwall Polycarbonate Panel System
NEW - Item #4 - Added Fiber Cement Panels		
4	Add to provided and install new WJA Fiber Cement panels at fieldhouse (Ref. 1/A20-15 & 1, 2/A20-16) ** 475 SF of WJA was included in base bid (Rev. 2/A20-16)	782 sf. Option: