

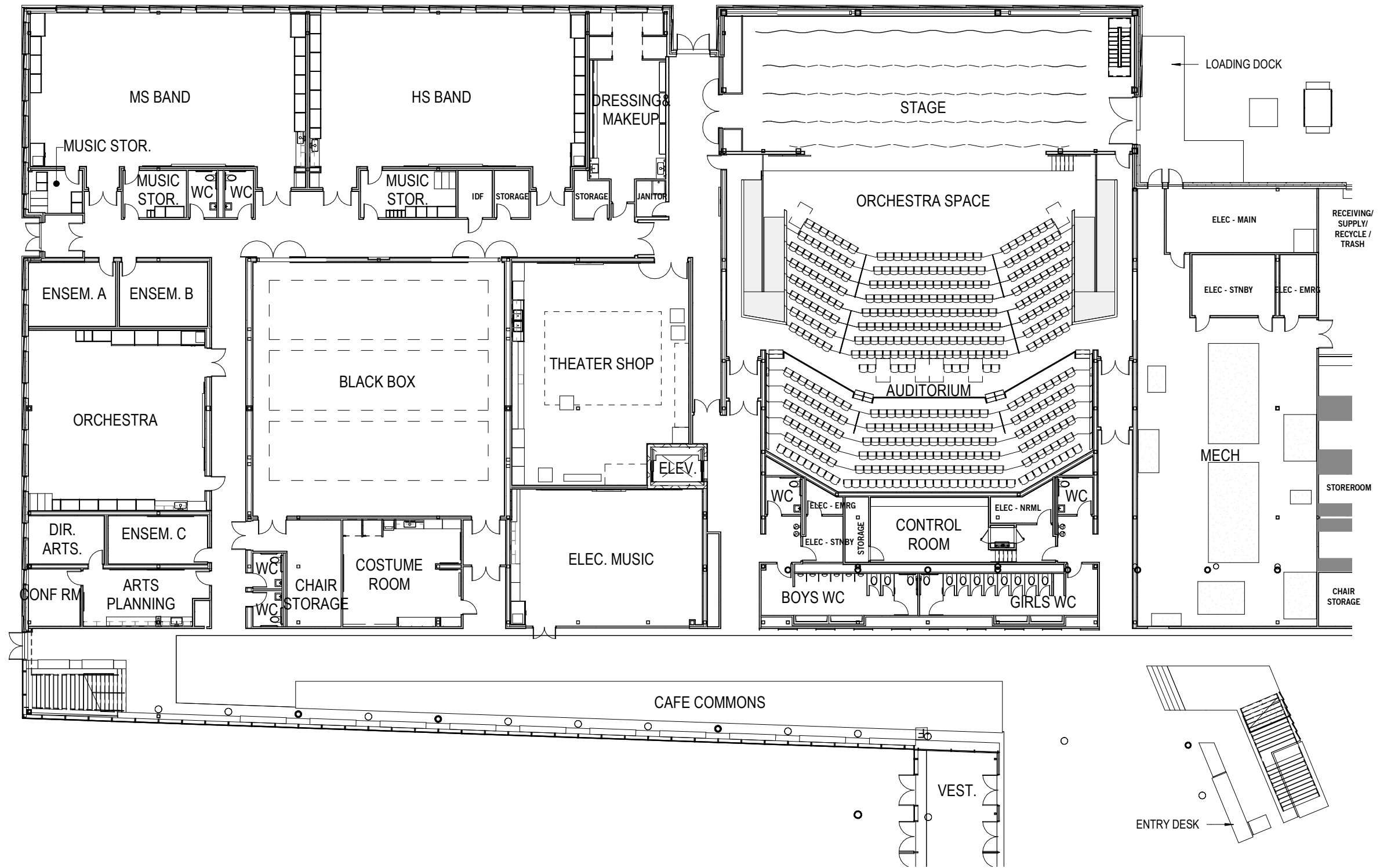
BELMONT MIDDLE AND HIGH SCHOOL

THEATER

- PLANNING UPDATE
- THEATER DESIGN CONCEPT

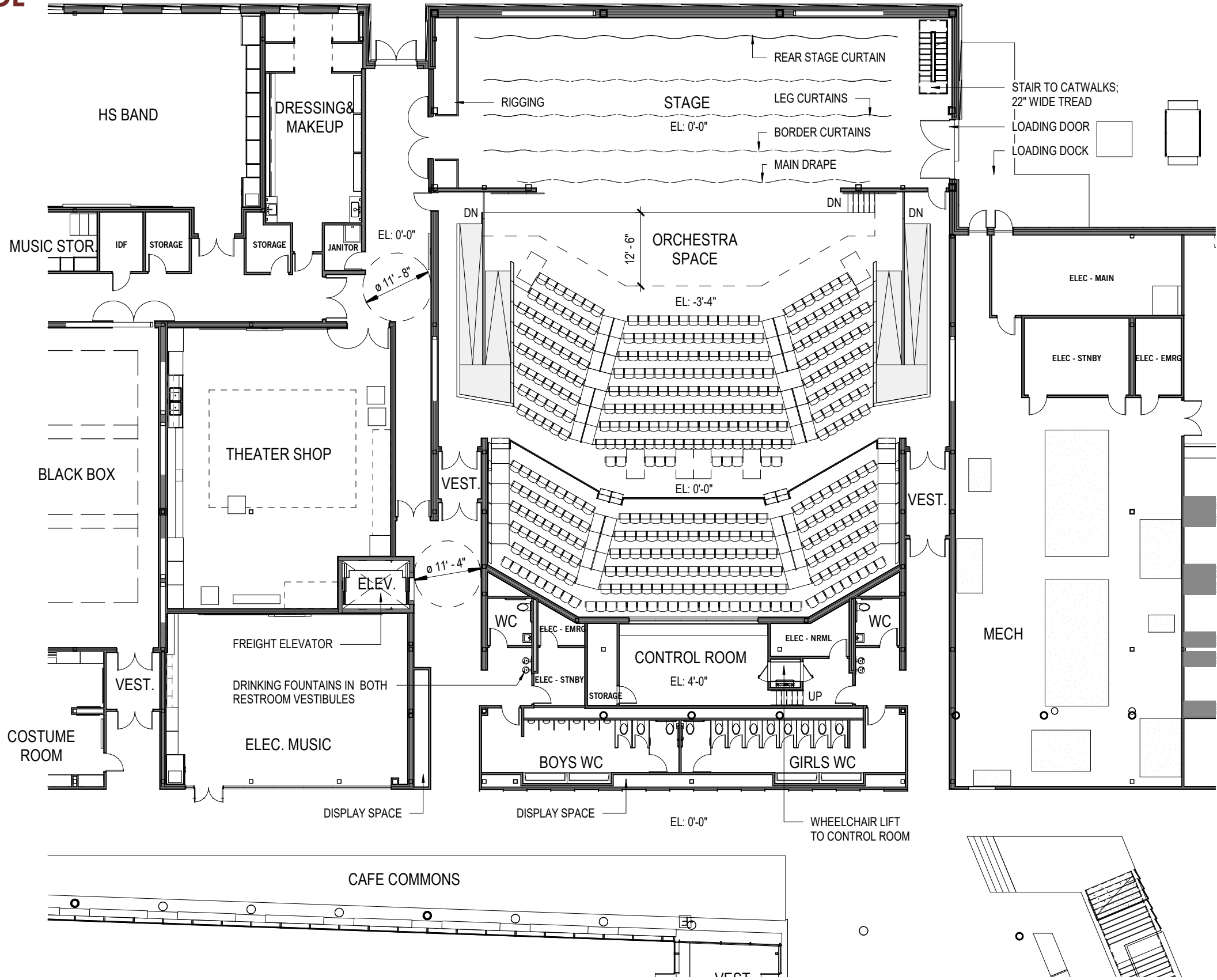
BELMONT MIDDLE AND HIGH SCHOOL

LEVEL 01 PLAN



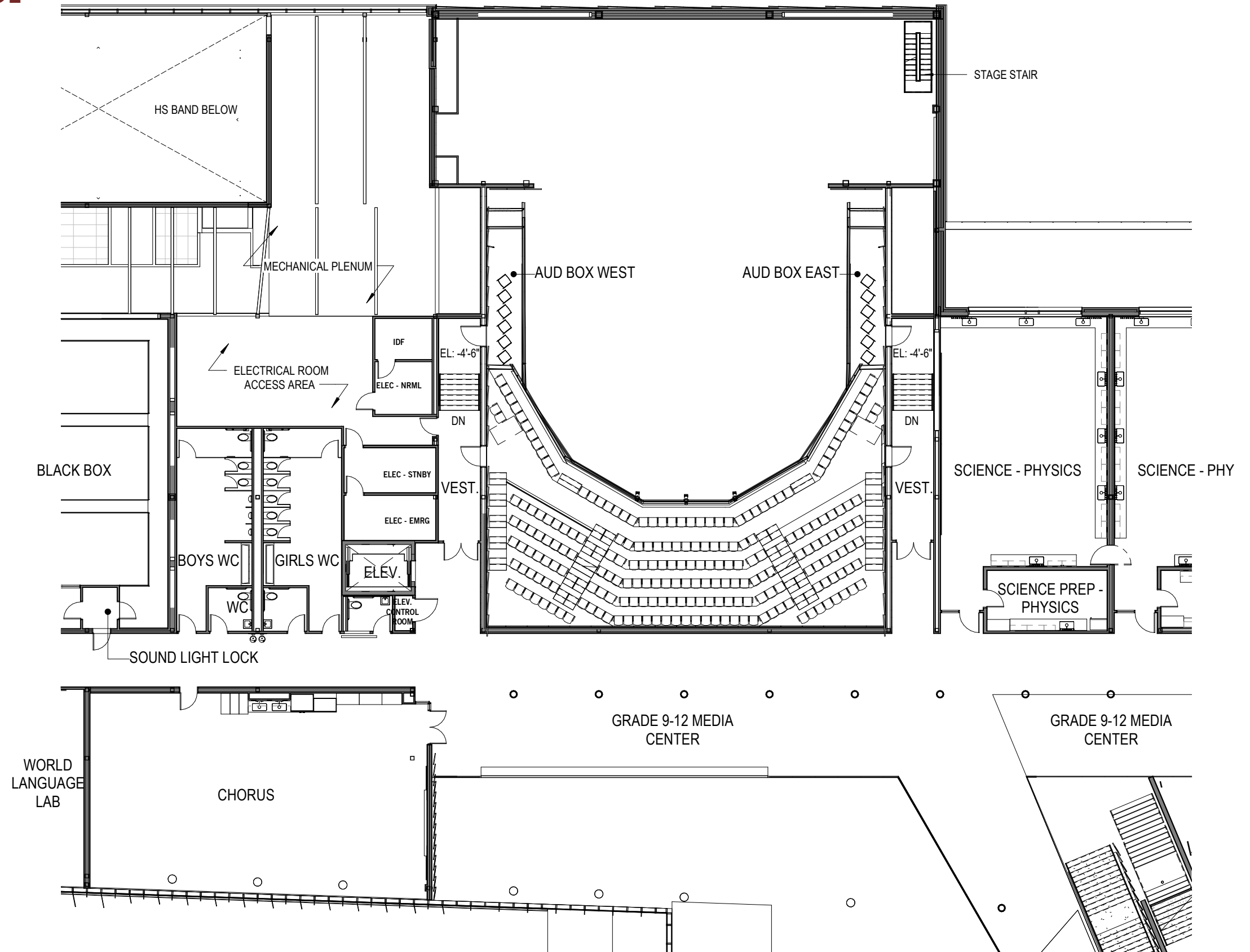
BELMONT MIDDLE AND HIGH SCHOOL
LEVEL 01 PLAN AUDITORIUM

LEVEL 01 SEAT COUNT: 469
TOTAL SEAT COUNT: 702

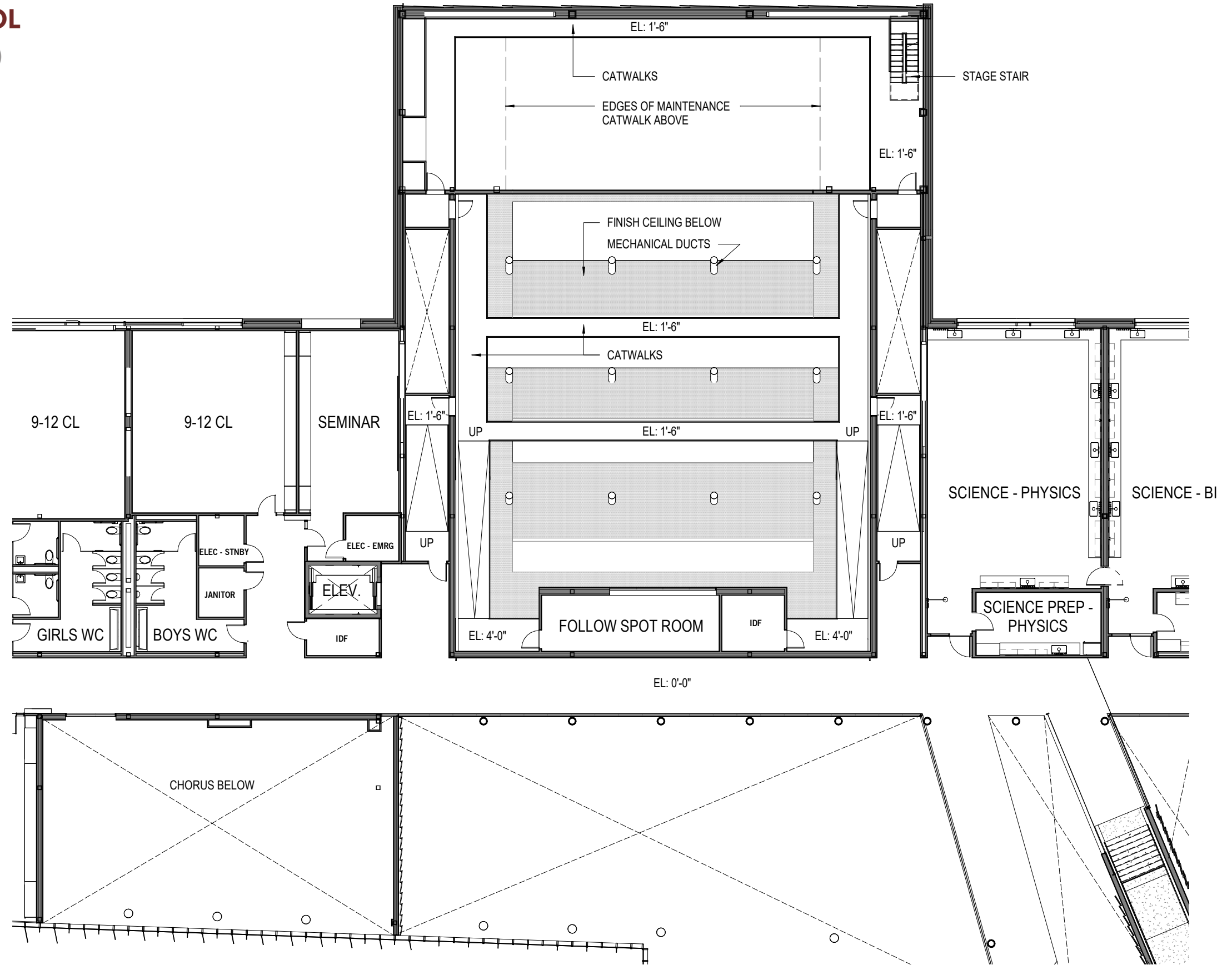


BELMONT MIDDLE AND HIGH SCHOOL
AUDITORIUM - LEVEL 02 (BALCONY)

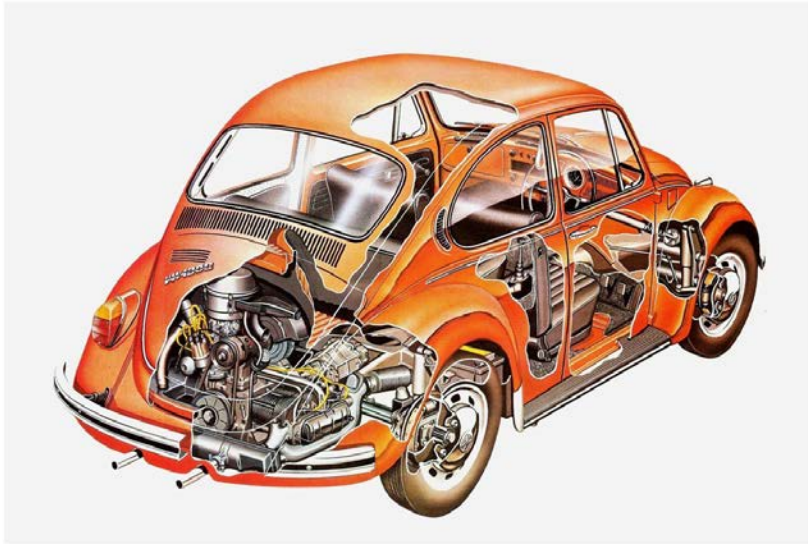
LEVEL 02 SEAT COUNT: 233
TOTAL SEAT COUNT: 702



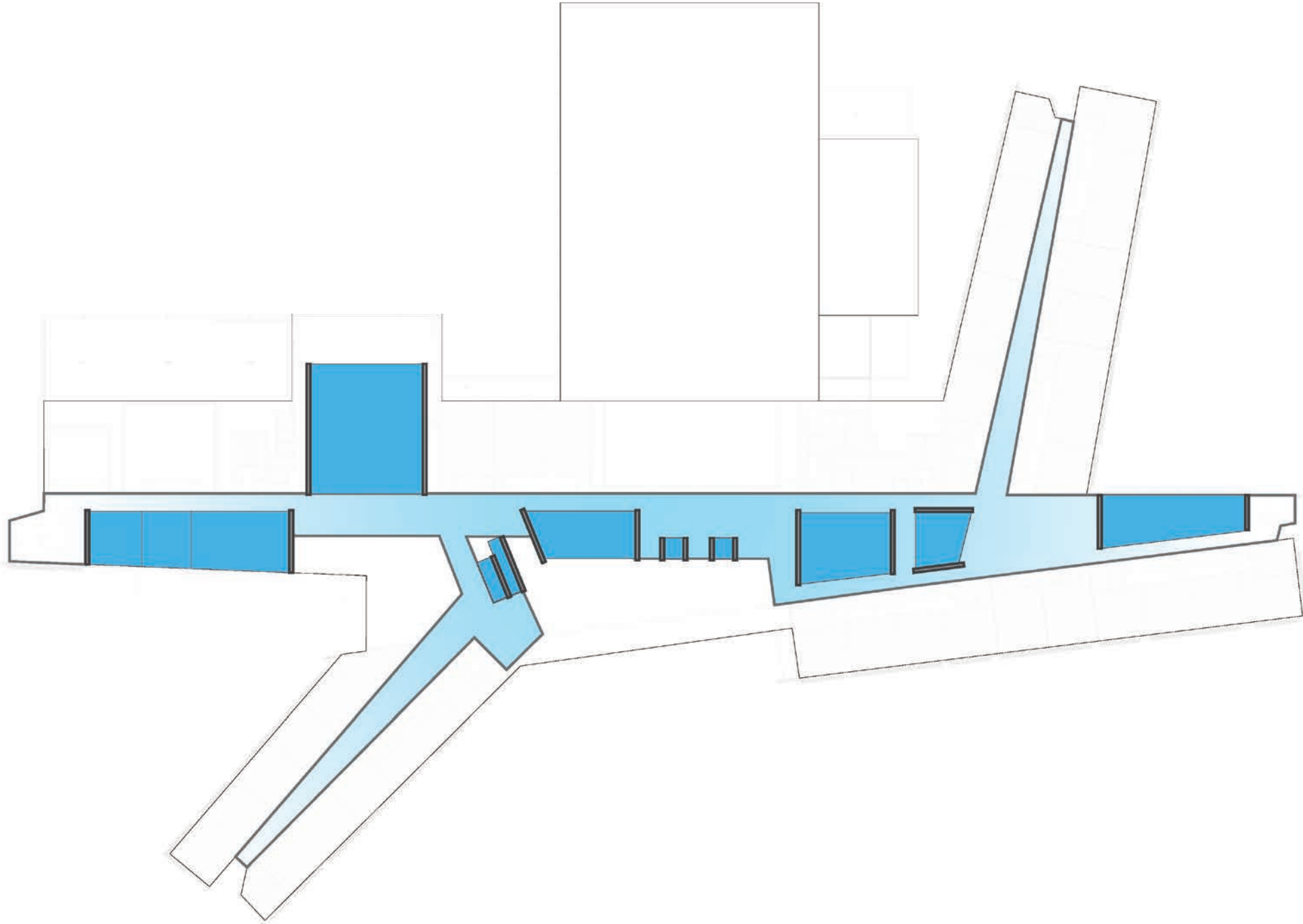
BELMONT MIDDLE AND HIGH SCHOOL
AUDITORIUM - LEVEL 03 (CATWALKS)



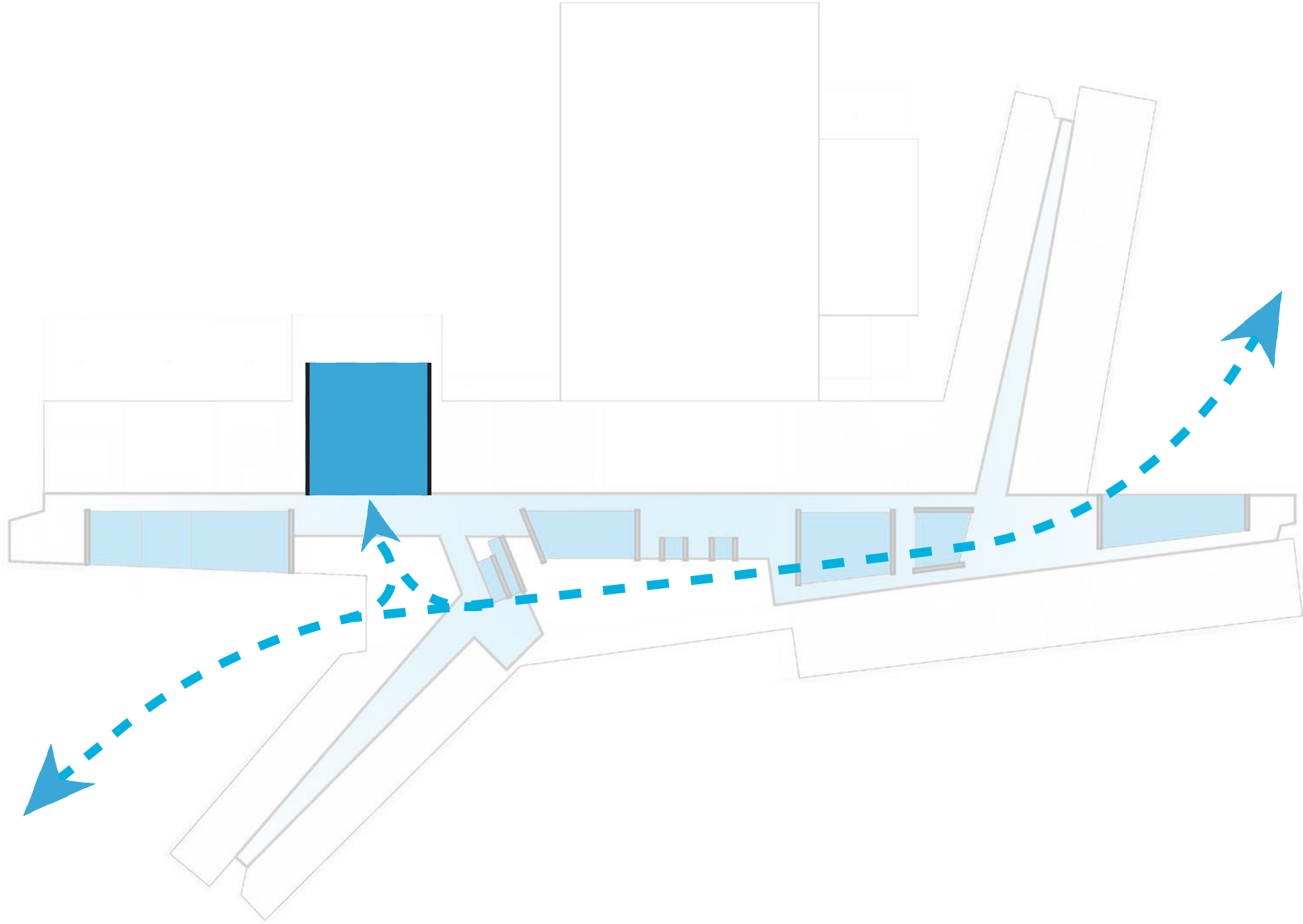
BELMONT MIDDLE AND HIGH SCHOOL INTERIOR CONCEPT
SPECIALIZED SPACES



HOW THINGS WORK-
PUTTING THE PRODUCT OF STUDENT
LEARNING ON DISPLAY



BELMONT MIDDLE AND HIGH SCHOOL AUDITORIUM
SPECIALIZED SPACES



BELMONT MIDDLE AND HIGH SCHOOL AUDITORIUM
CIVIC CHARACTER

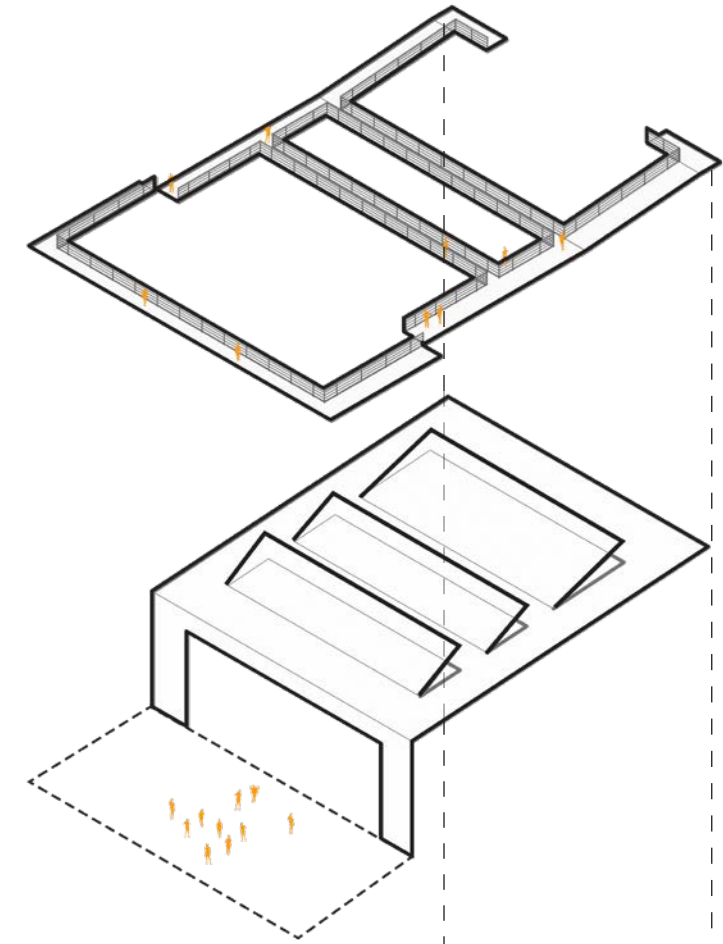




TUNES THE SPACE THROUGH ACOUSTIC ABSORPTION

UNIFIES MULTIPLE LEARNING ENVIRONMENTS

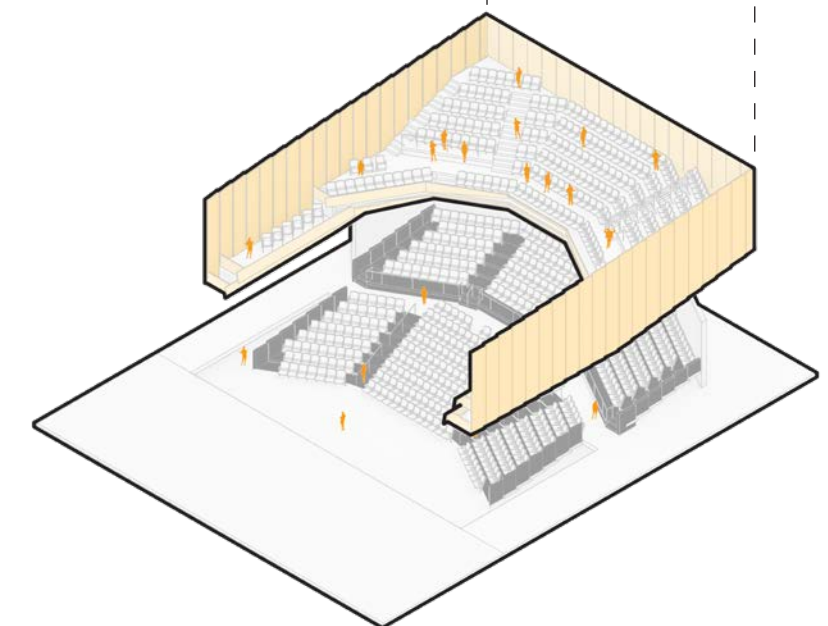
EXPRESSES BOTH TECHNICAL AND DRAMATIC ASPECTS OF PERFORMANCE



TUNES THE SPACE THROUGH ACOUSTIC REFLECTION

DEFINES THE AUDIENCE'S SPACE

EXPRESSES THE AUDITORIUM'S CIVIC CHARACTER



BELMONT MIDDLE AND HIGH SCHOOL AUDITORIUM

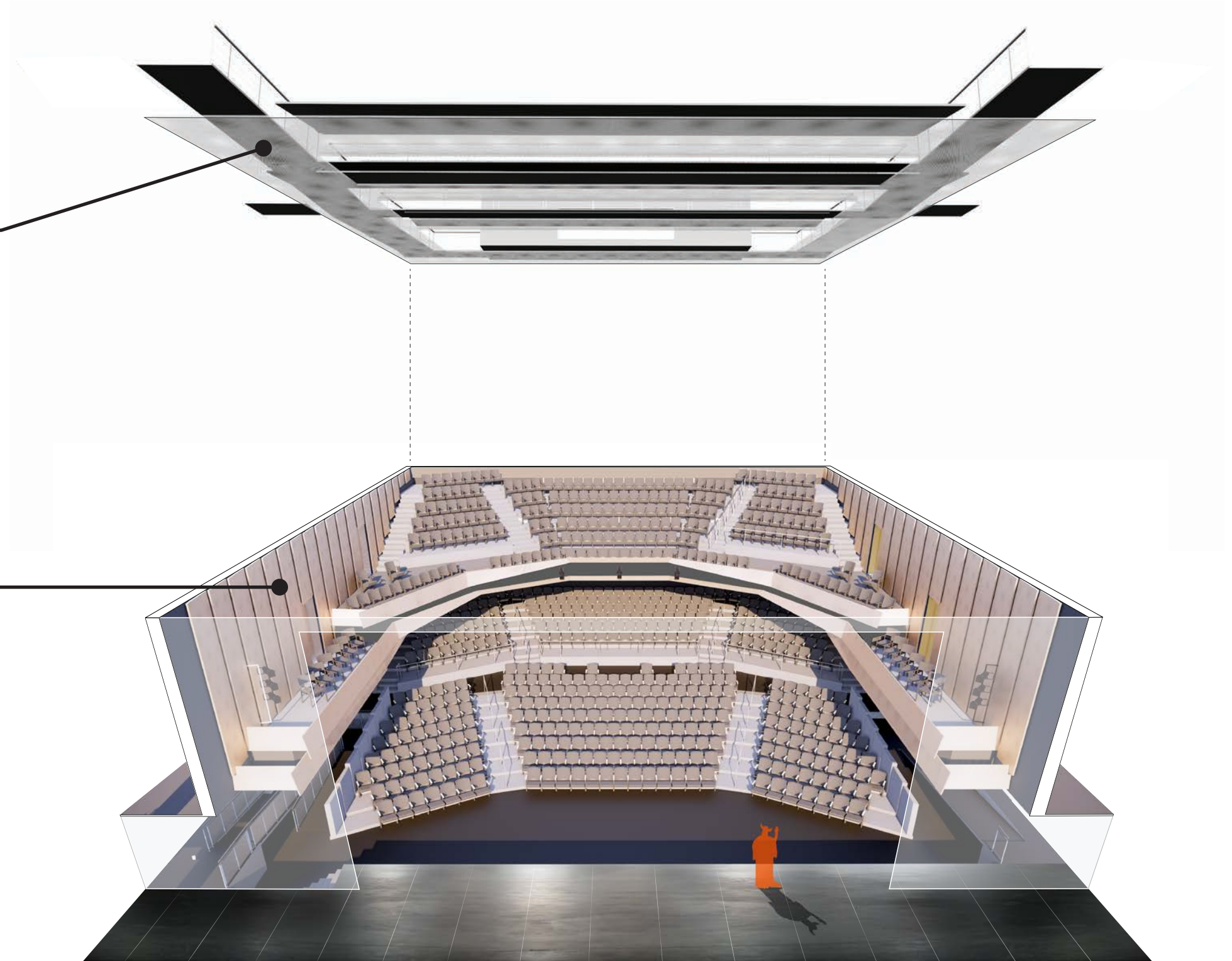
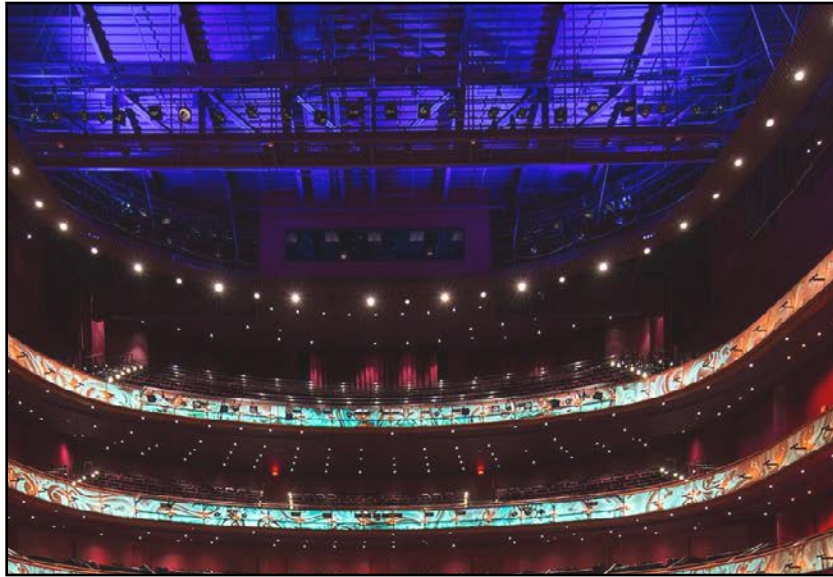
AUDIENCE ENVIROMENT



BELMONT MIDDLE AND HIGH SCHOOL AUDITORIUM
LEARNING ENVIROMENT



BELMONT MIDDLE AND HIGH SCHOOL INTERIOR CONCEPT LIGHTING

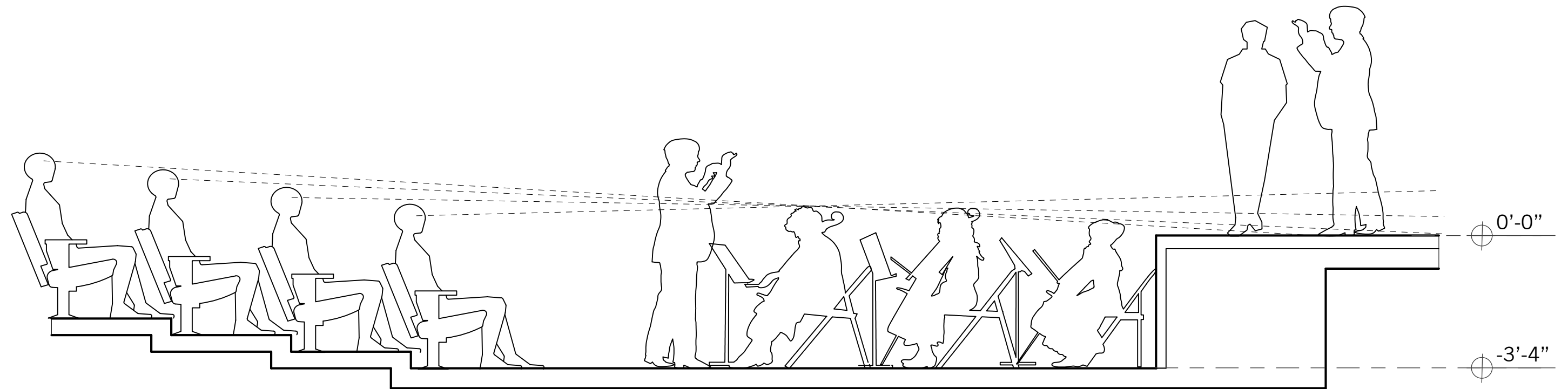
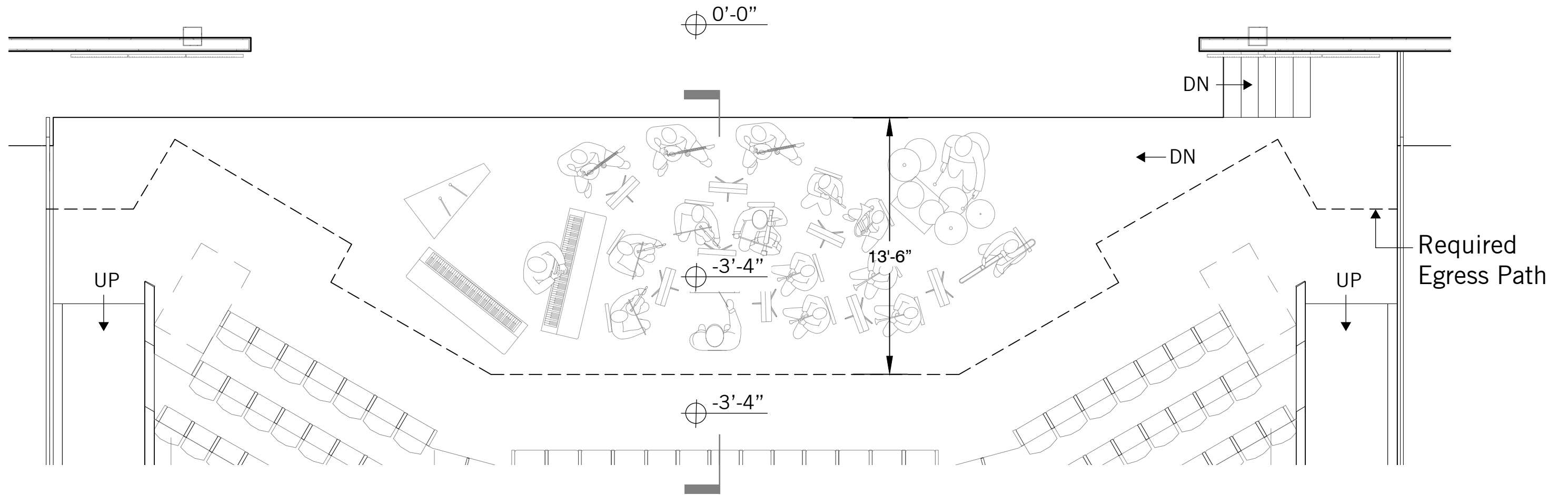


BELMONT MIDDLE AND HIGH SCHOOL AUDITORIUM
SEAT COLOR

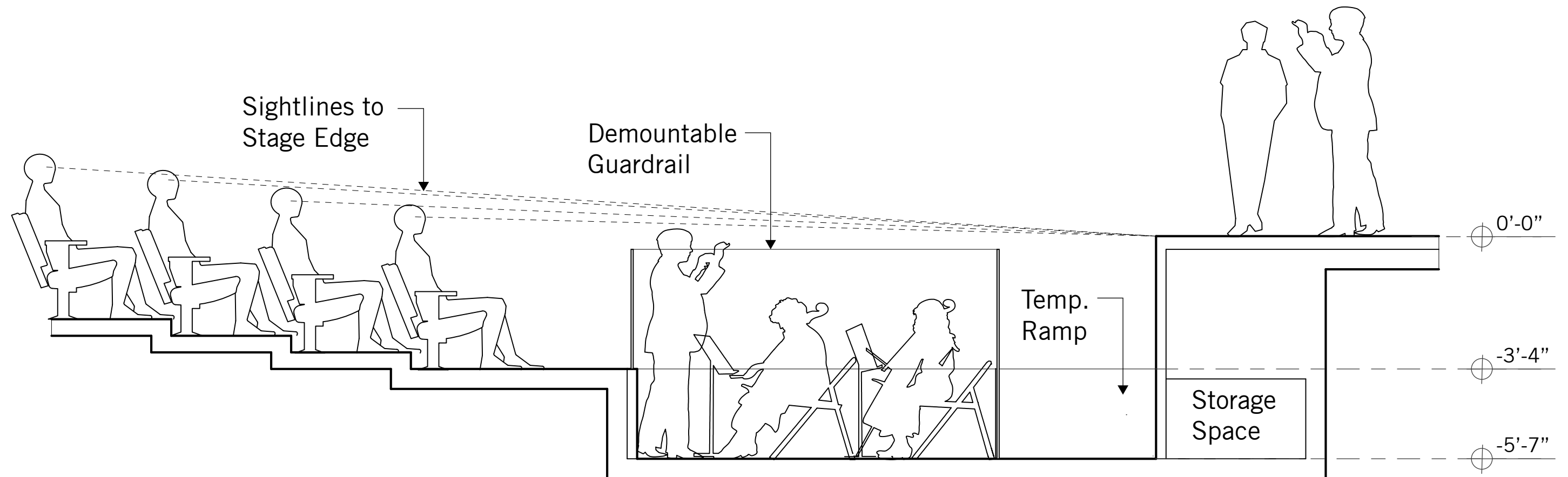
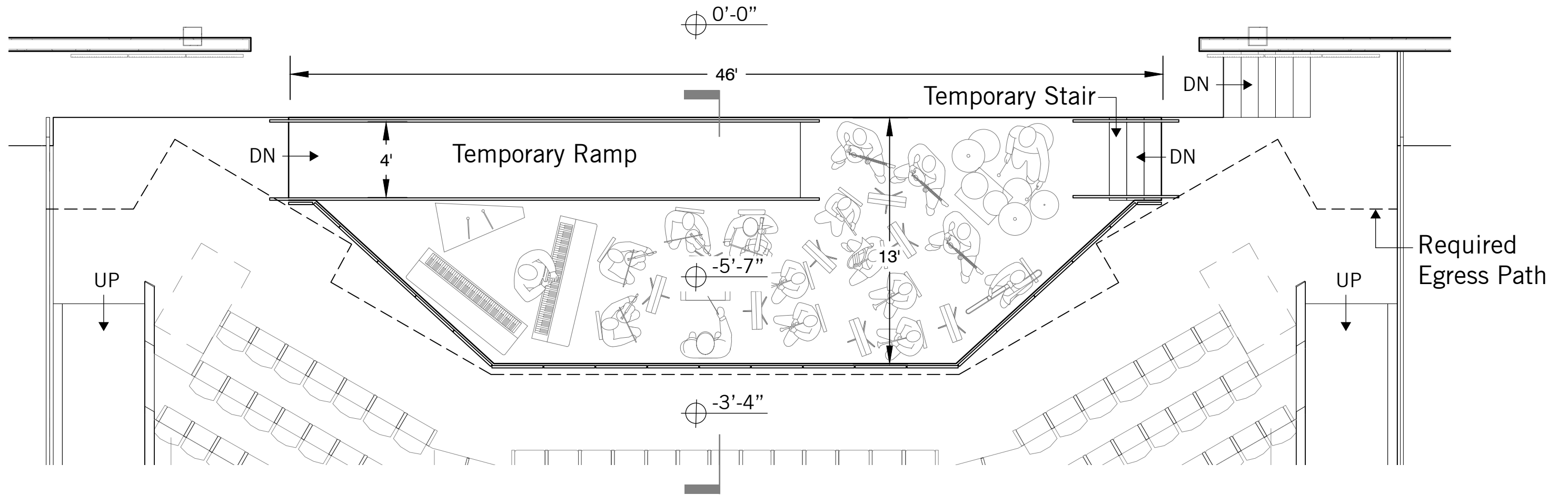


WALKTHROUGH

ORCHESTRA OPTION 1: NO PIT



ORCHESTRA OPTION 2: PIT WITH TEMPORARY RAMP



ORCHESTRA OPTION 3: PIT WITH LIFT

