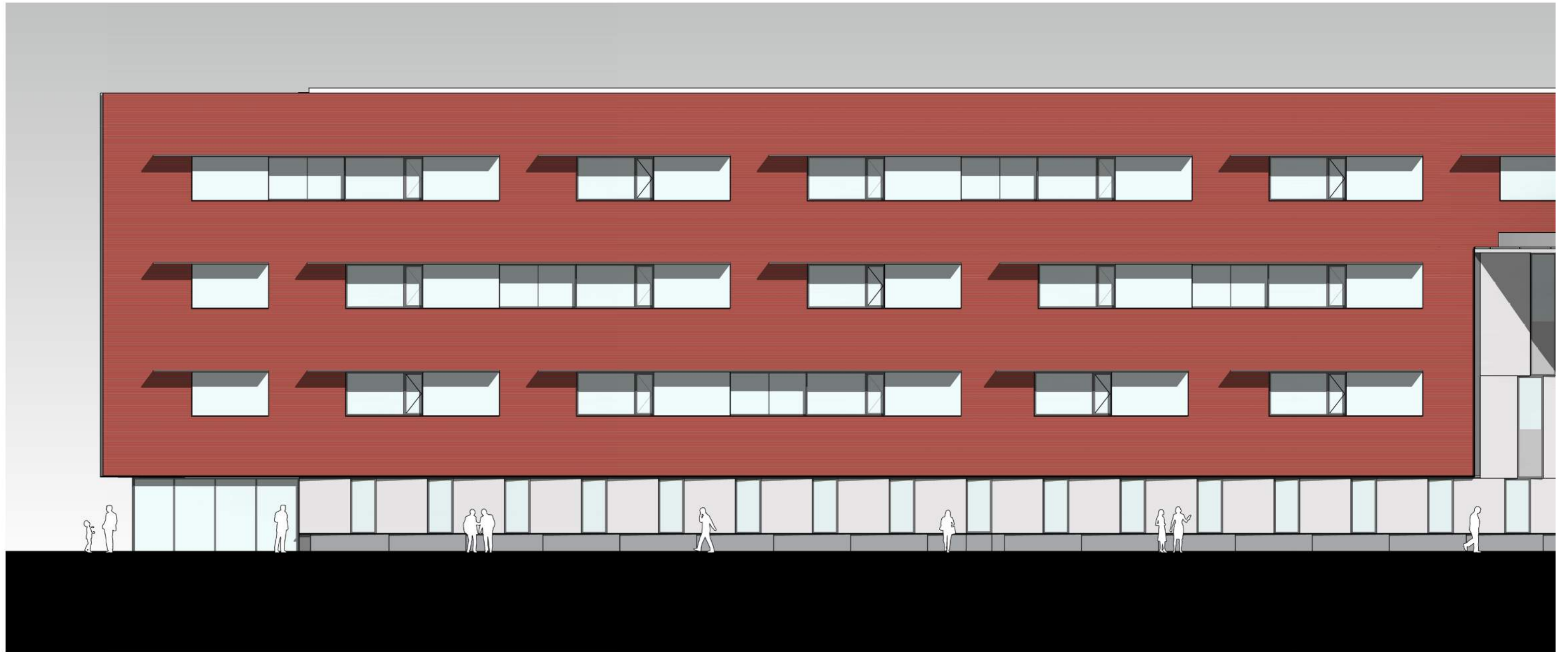


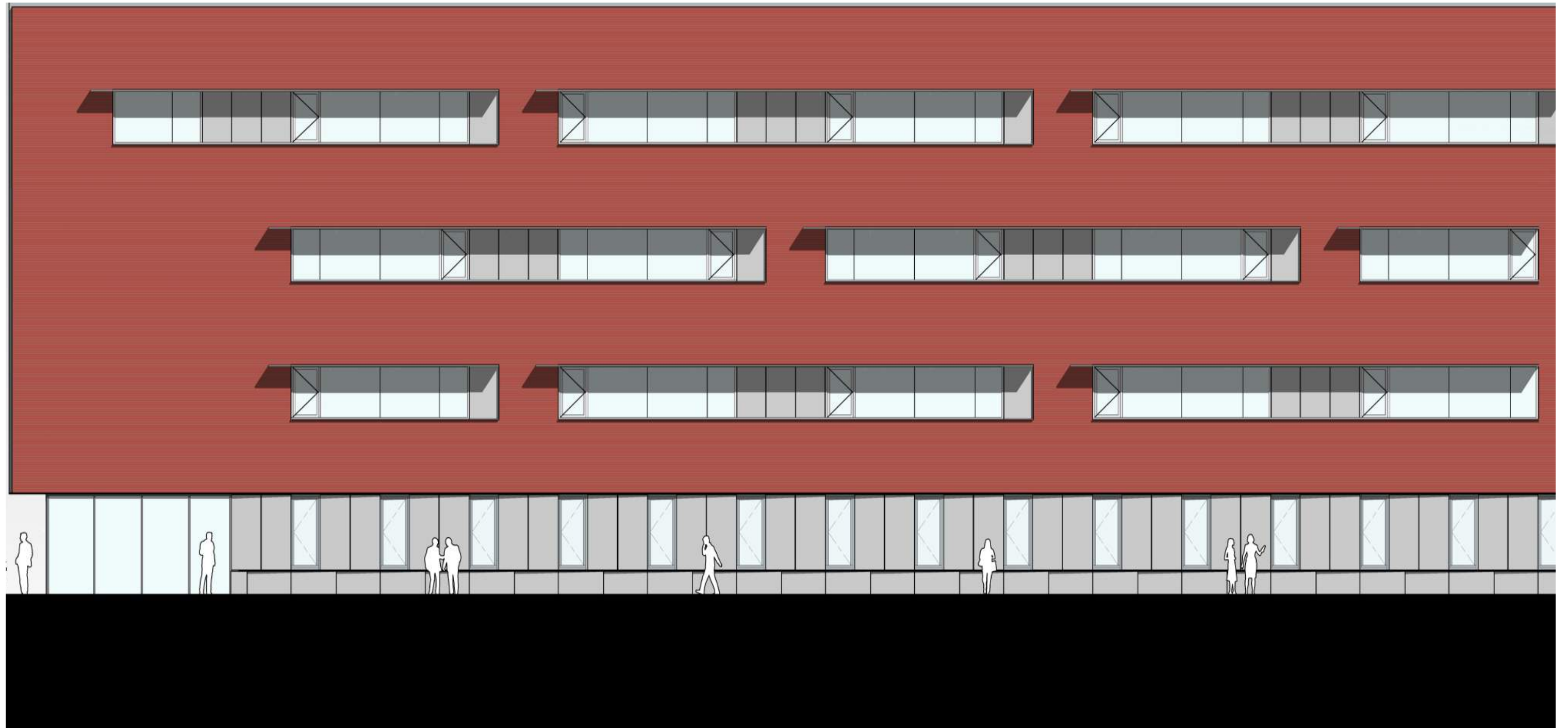
# **BELMONT MIDDLE AND HIGH SCHOOL BUILDING COMMITTEE**

JUNE 19 2019

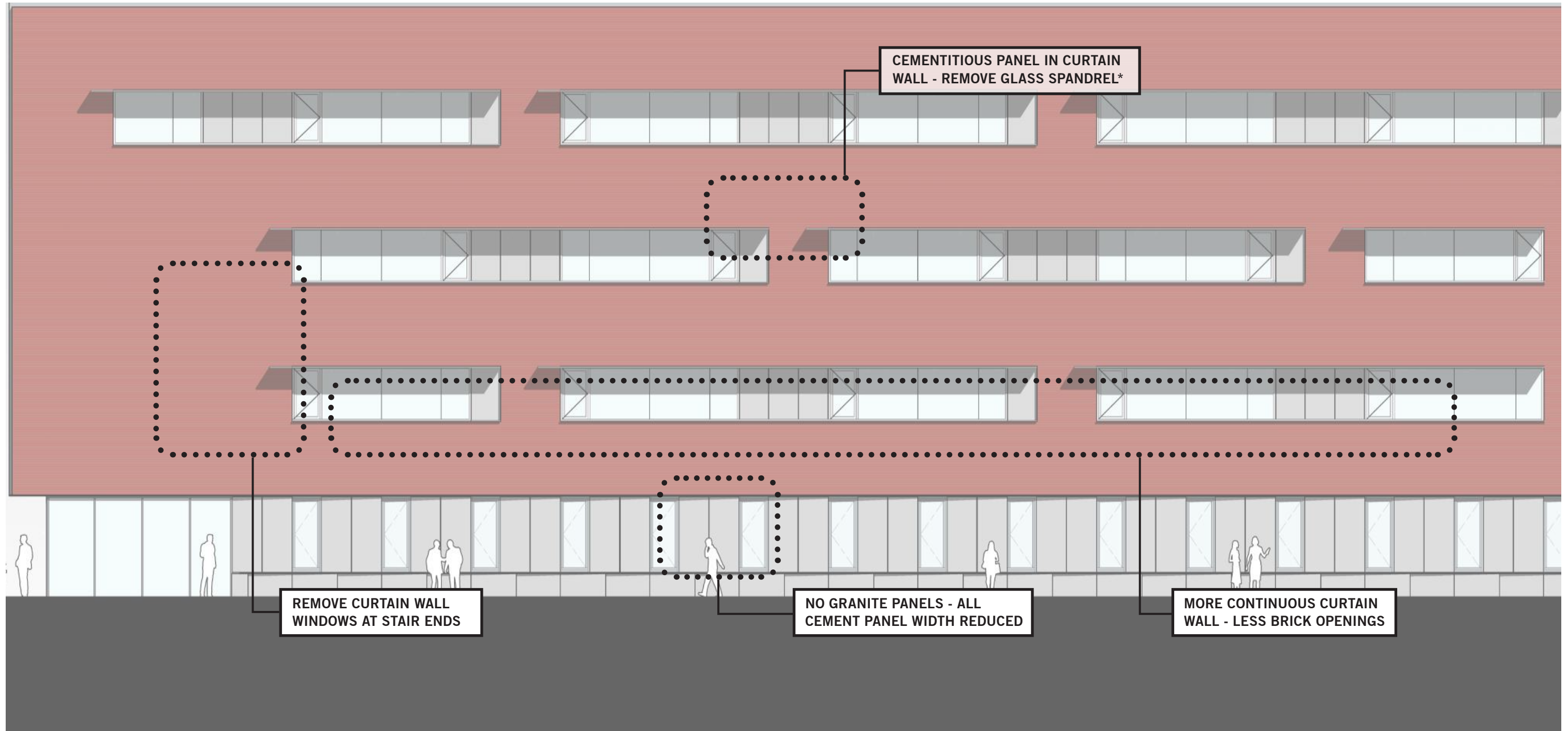


- 2'-8" TOTAL HEIGHT REDUCTION IN ELEVATION (8" FLOOR-TO-FLOOR REDUCTION)
- CLASSROOM GLAZING HEIGHT REDUCED TO 5'-4" OVERALL (FROM 5'-9")
- REPLACE GRANITE BASE WITH PRECAST - REDUCE ALL PRECAST PANEL WIDTHS





- CURRENT DESIGN REMOVES ~340 SF OF GLASS SPANDREL AND ~120 SF OF BRICK IN THIS SAMPLE ELEVATION - TO BE REPLACED WITH CEMENTITIOUS PANEL (~460 SF)





GLASS SPANDREL DETAIL W/  
SSG VERTICAL JOINT



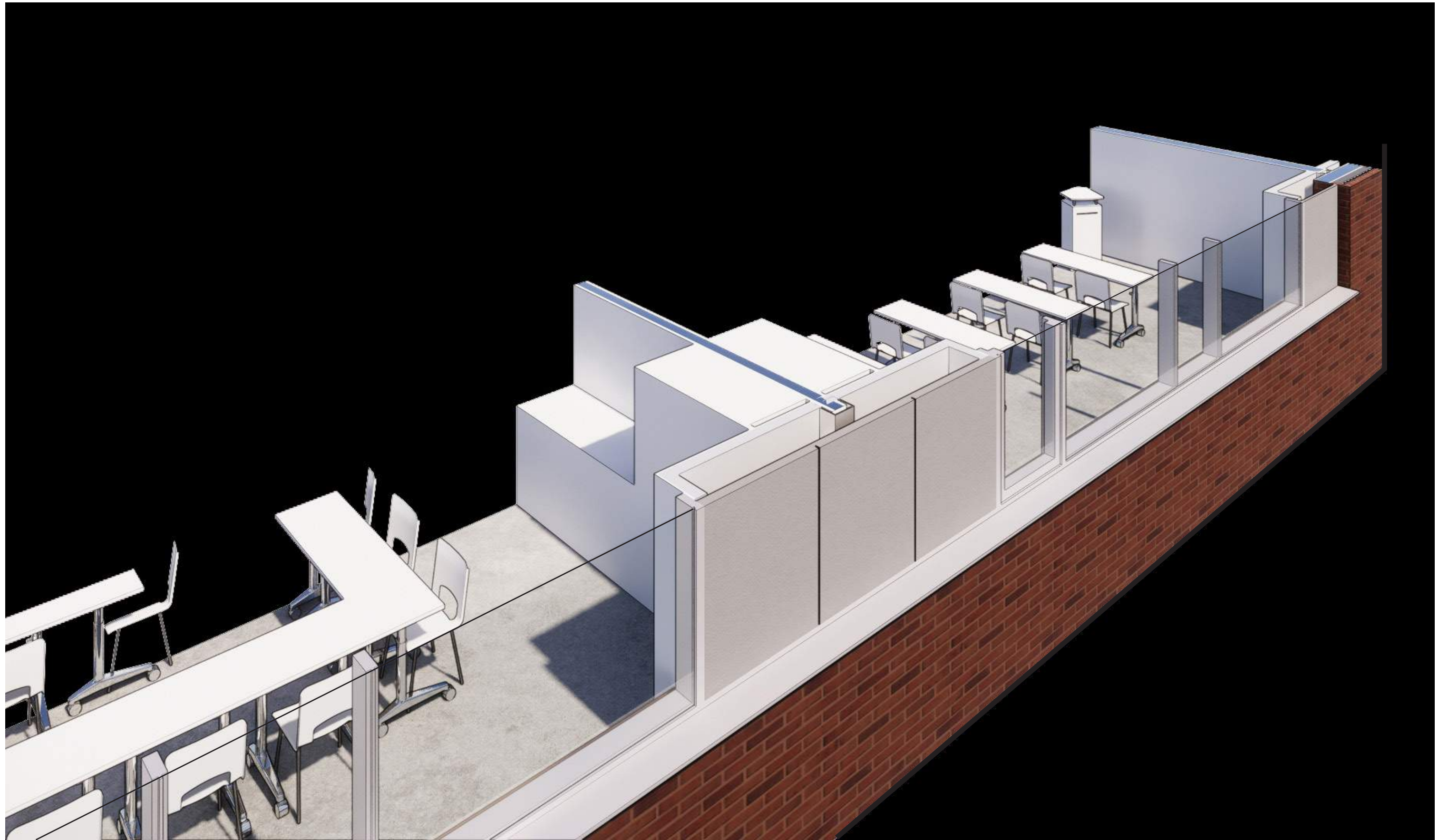


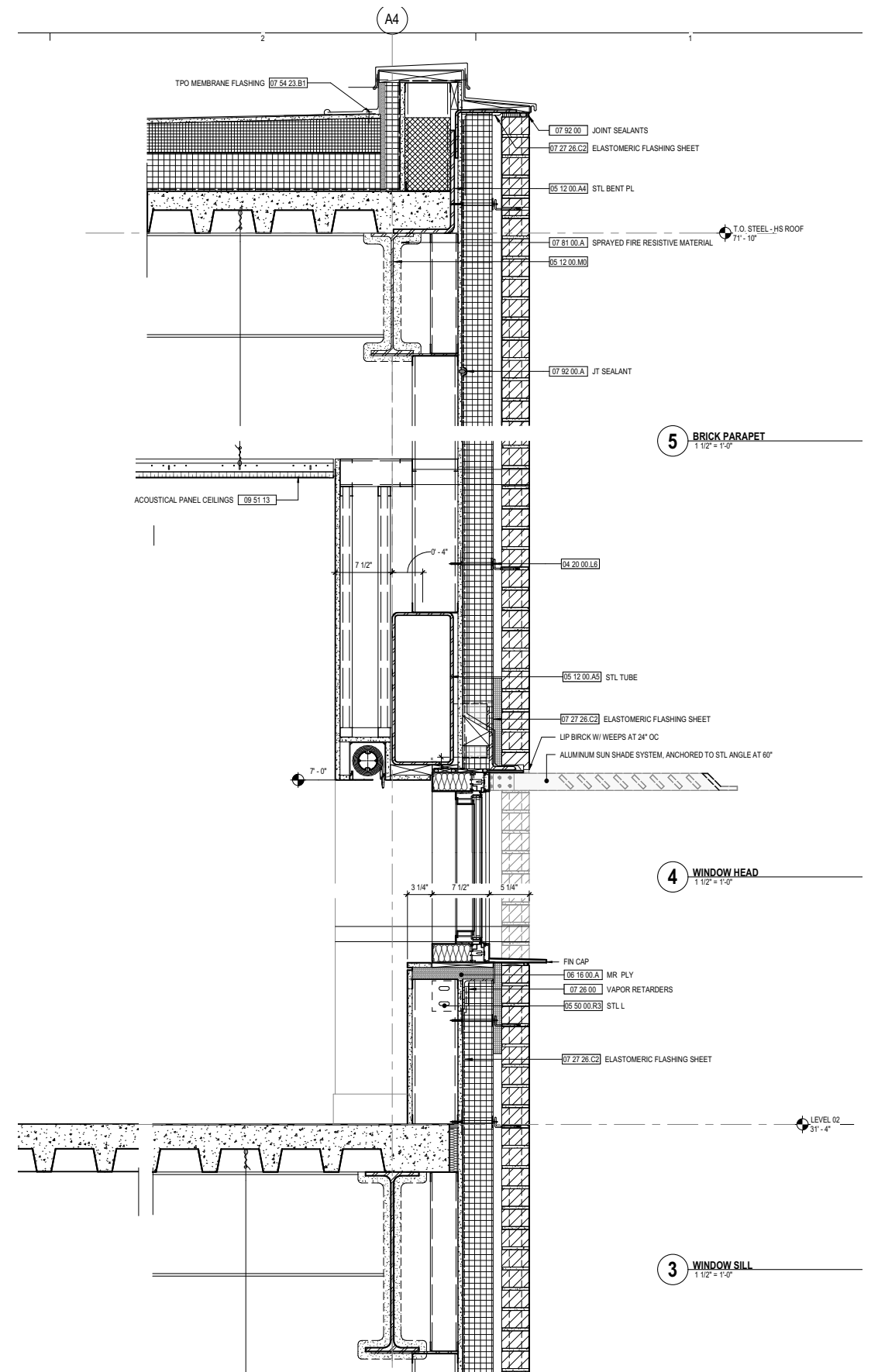
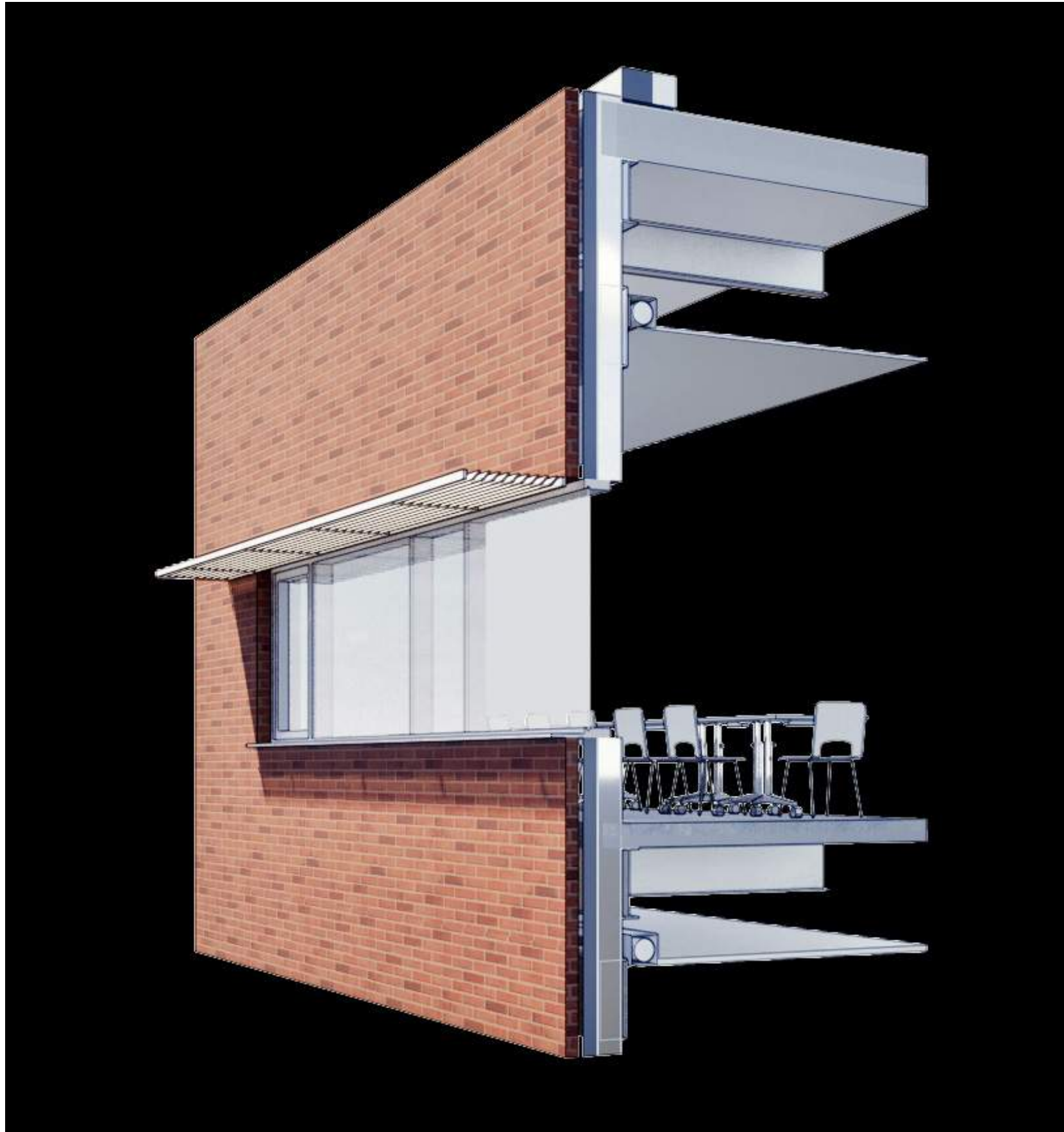


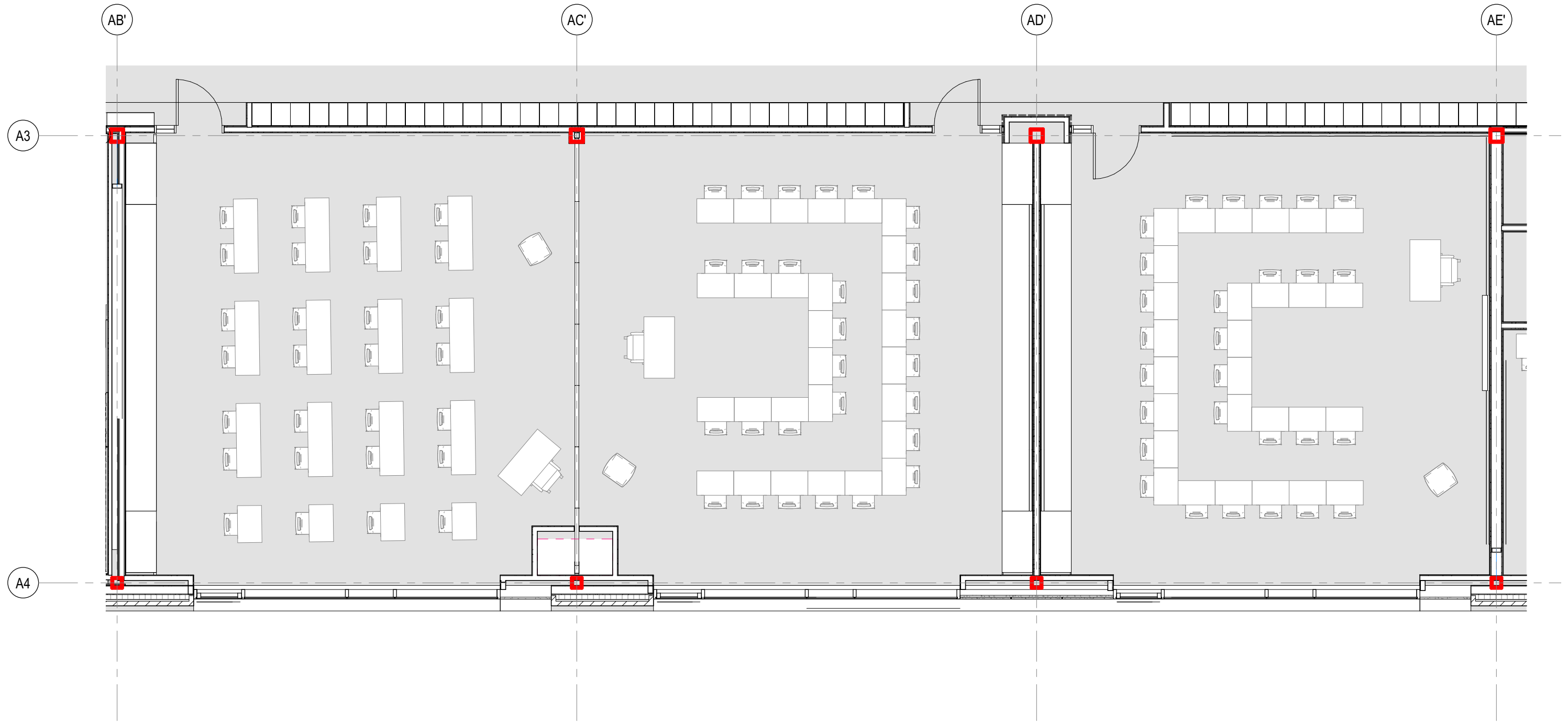


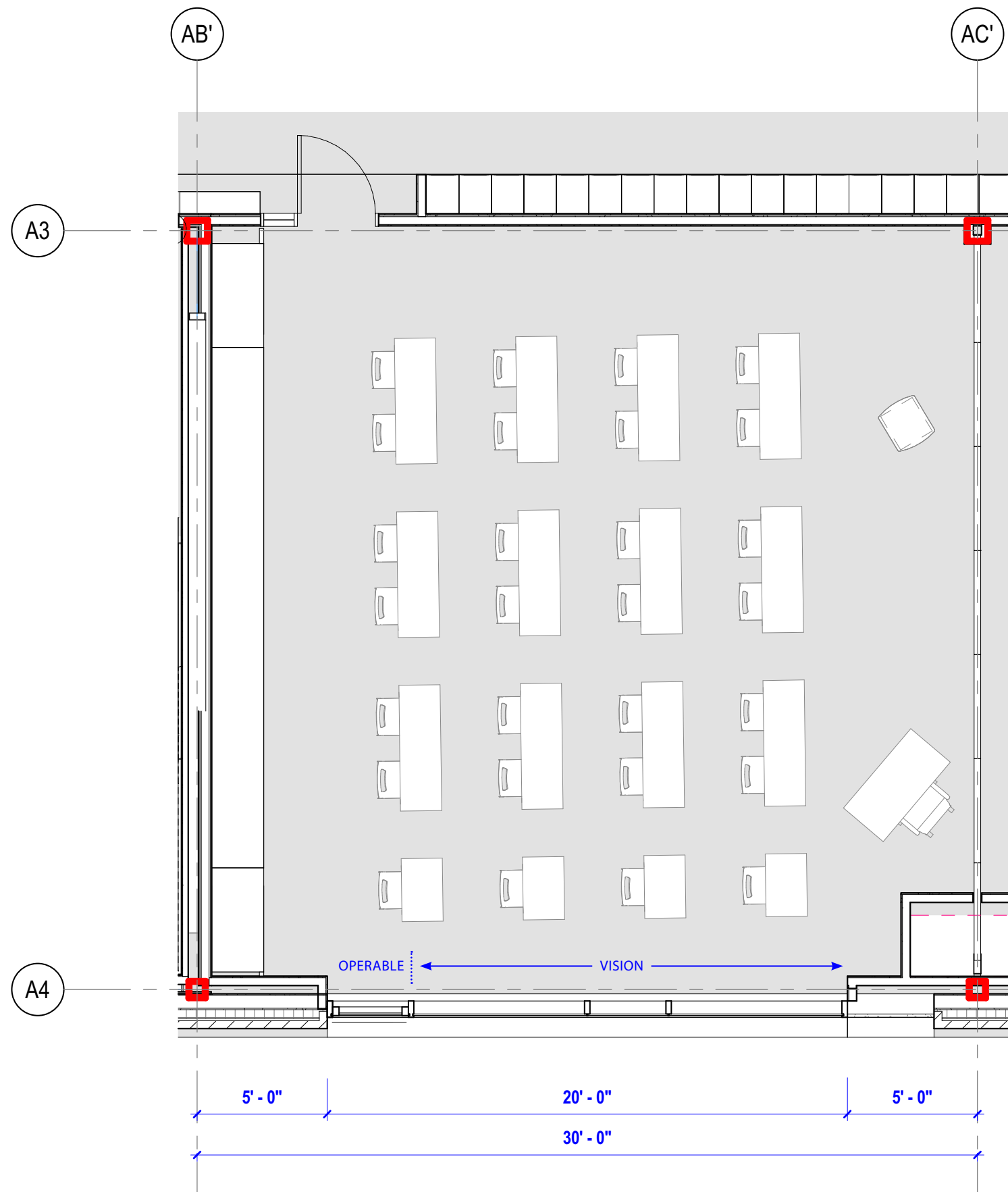








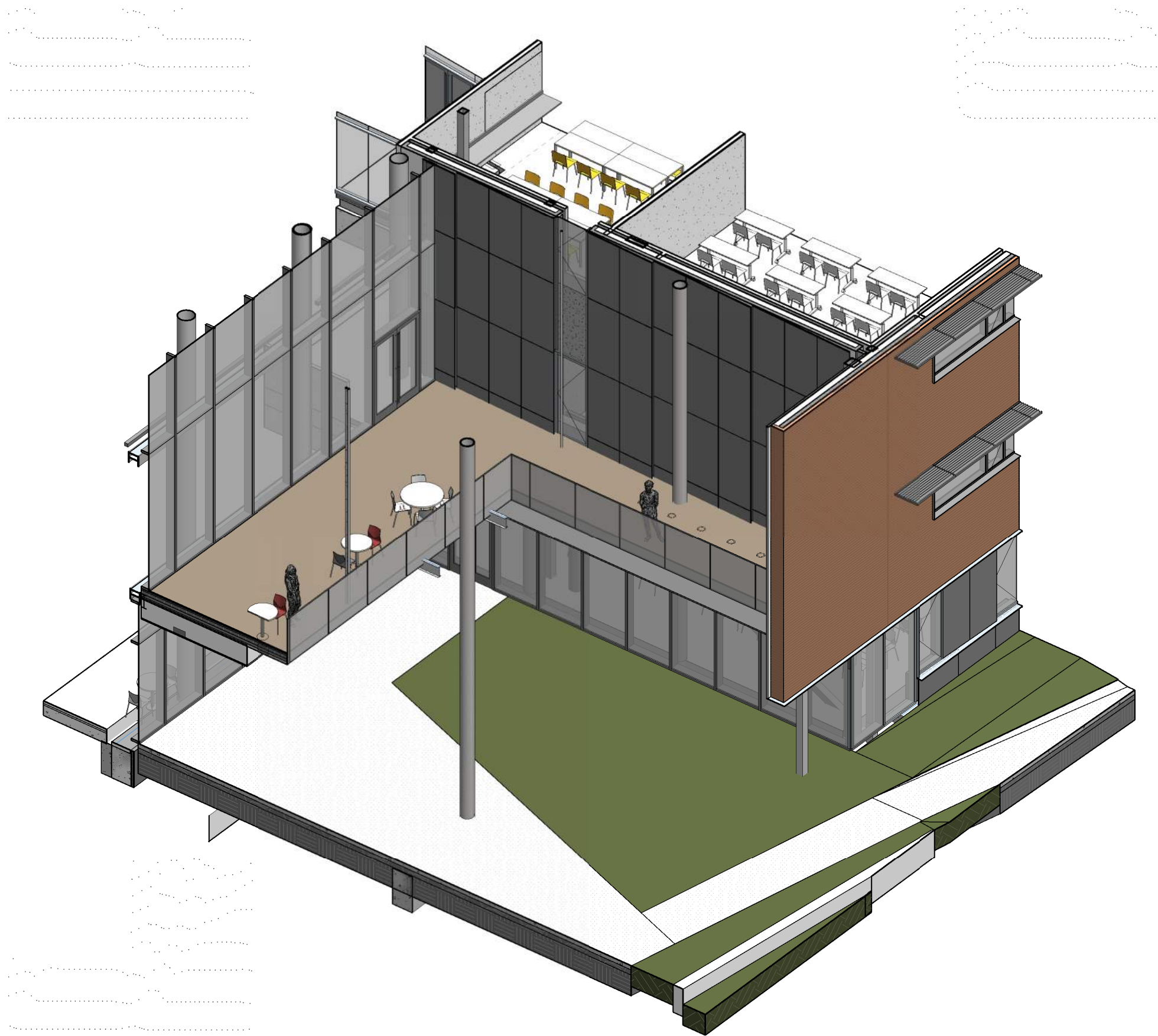
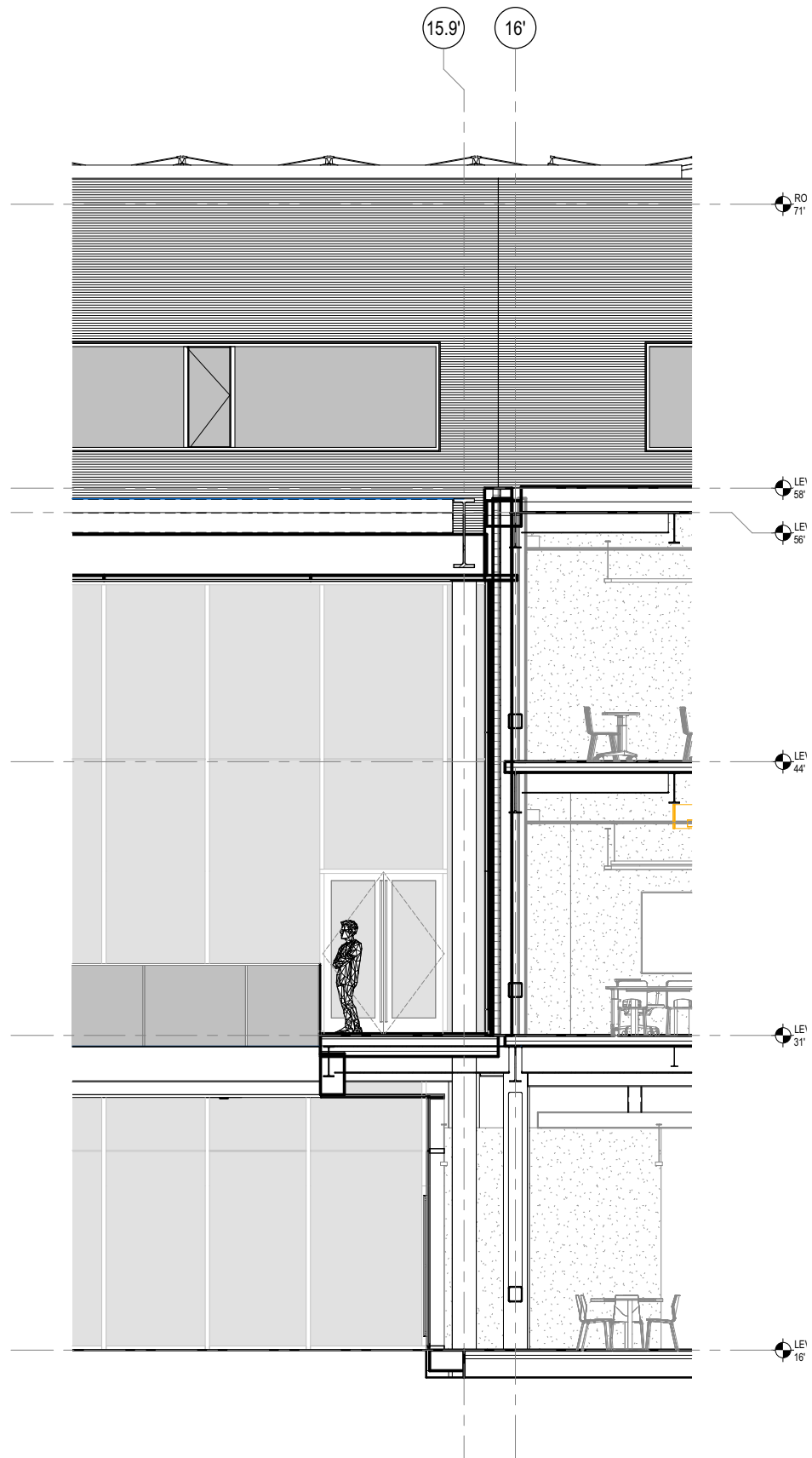


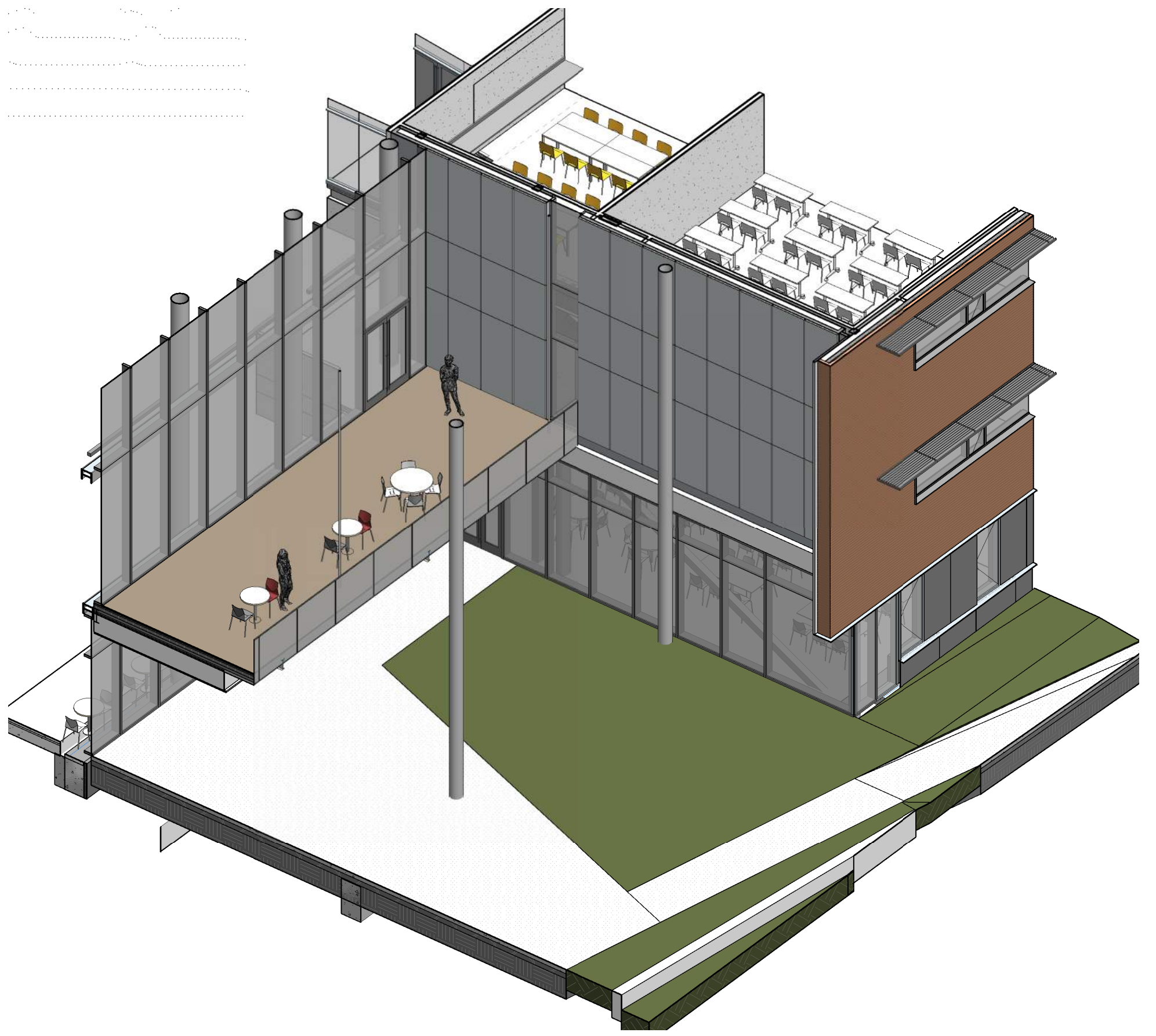
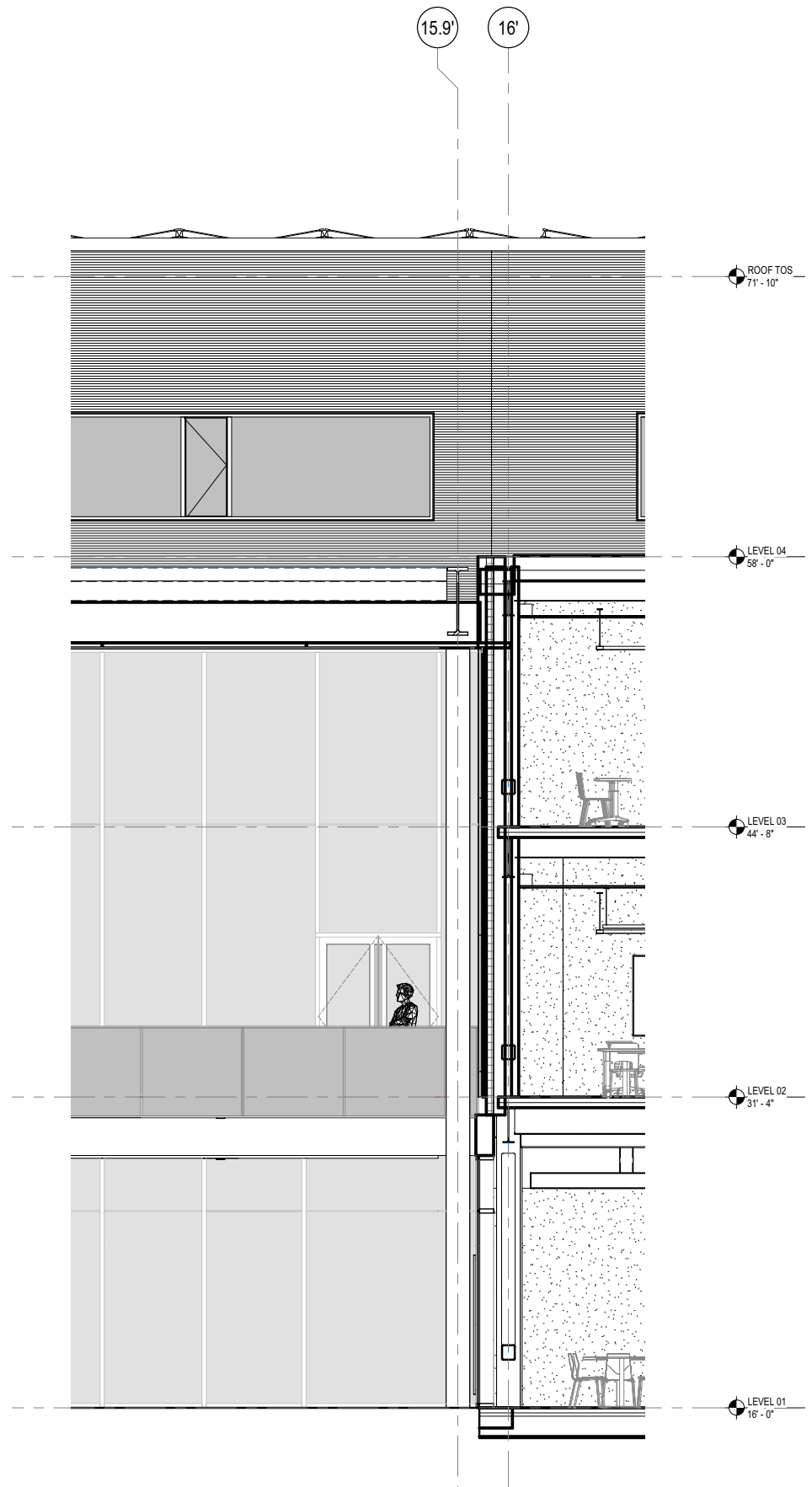


- A** Brick Face - Norman Size, Limited Flashing
- B** High Performance Concrete Panel, Sandblast Finish
- C** Precast Base - Sandblast Finish
- D** Clear Vision Glazing
- E** Spandrel Glazing - Dark Metal Backpan
- F** Light Grey Metal Panel
- G** Dark Grey Metal Panel & Mullions
- H** Perforated Metal Louvers
- I** Horizontal Fixed Sunshade

















18" TOTAL DIAMETER COLUMNS  
(HSS 14 + GFRC COLUMN COVER)



