

**BELMONT HIGH SCHOOL
BUILDING COMMITTEE MEETING**

MARCH, 27 2019

AGENDA

- VEGETATION/ TREES AND PLANTINGS
- LIGHTING/ PHOTOMETRICS AND SPECIFIC FIXTURES
- FENCING/ FIELDS
- VARSITY BASEBALL FIELD/ BRICKS, STANDS, GATEWAY, ETC.





ILLUSTRATIVE SITE PLAN

MARCH 27, 2019

PLANTING PALETTE

SHRUBS, GRASSES AND GROUNDCOVERS

SHRUBS, GRASSES AND GROUNDCOVERS

Legend

- Pond edge
- Park
- Grasses
- Groundcovers
- Lawn
- Shrubs



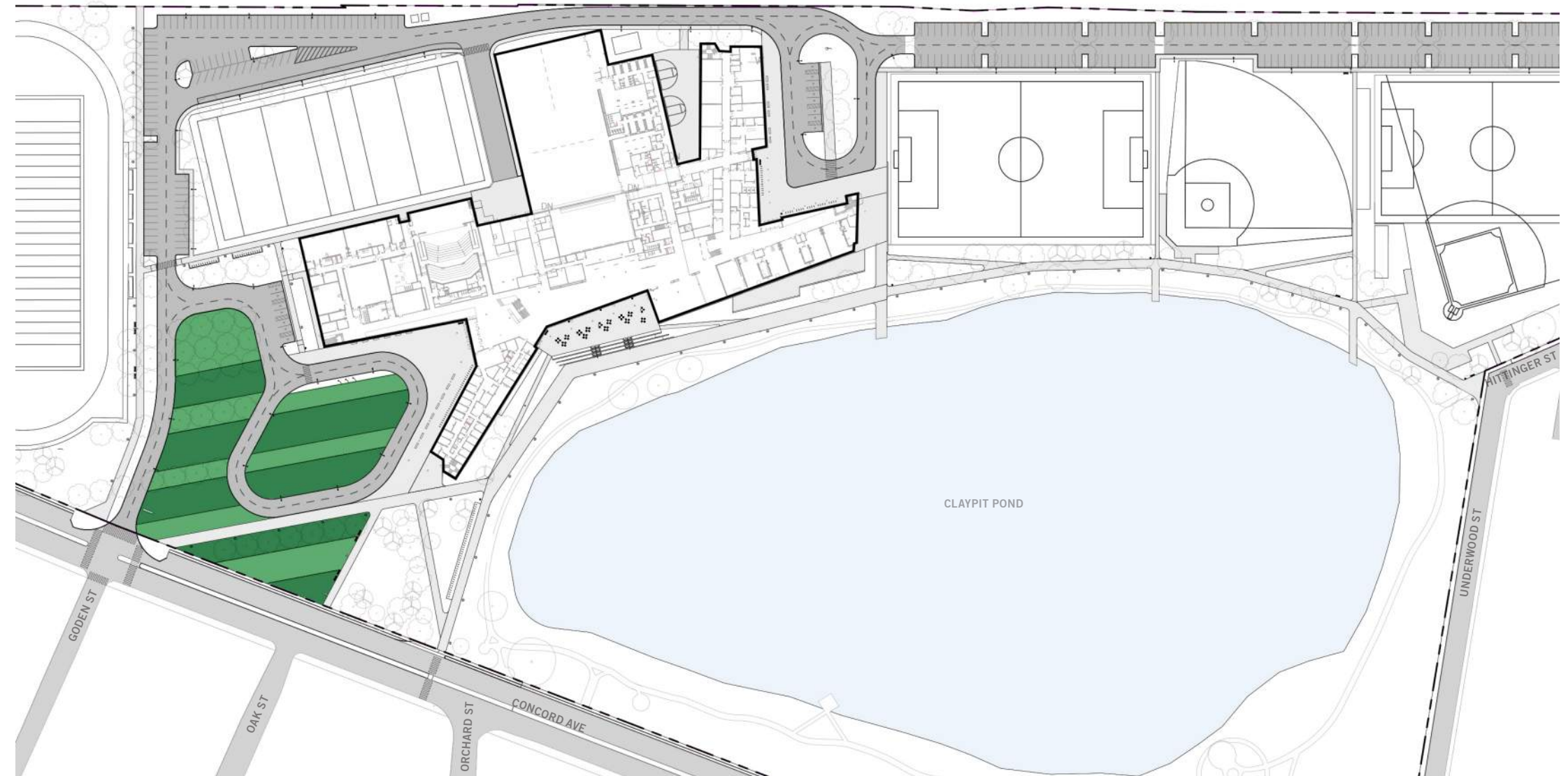
PLANTING PALETTE

MARCH 27, 2019

GROUNDCOVERS/ GRASSES_OPTION 1

Scientific name: *Liriope spicata*
Common name: Lilyturf

Scientific name: *Sporobolus heterolepis*
Common name: Prairie Dropseed



PLANTING PALETTE

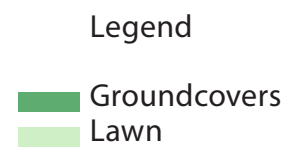
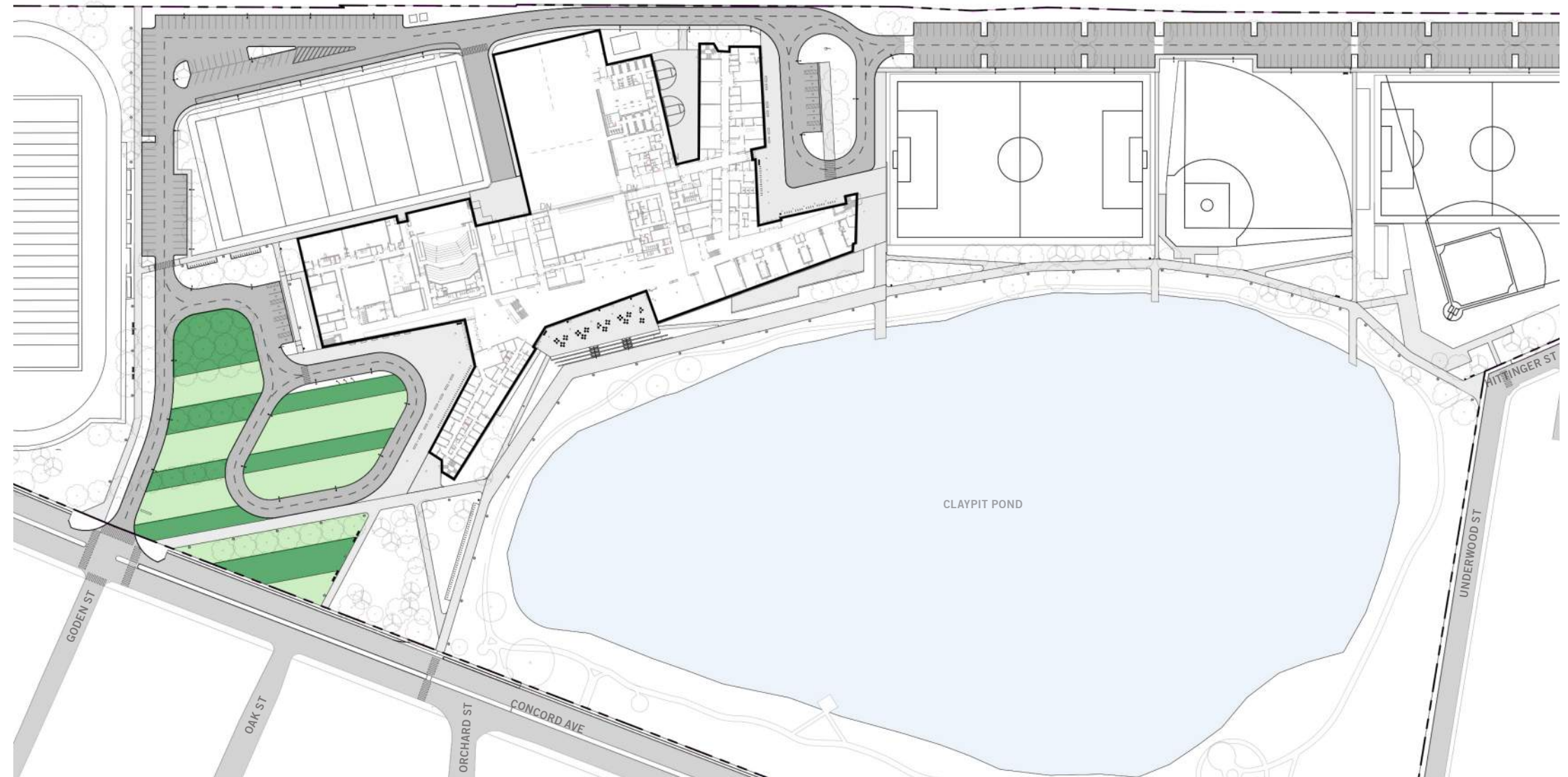
MARCH 27, 2019

GROUNDCOVERS/ GRASSES_OPTION 2

Scientific name: *Liriope spicata*

Common name: Lilyturf

Lawn

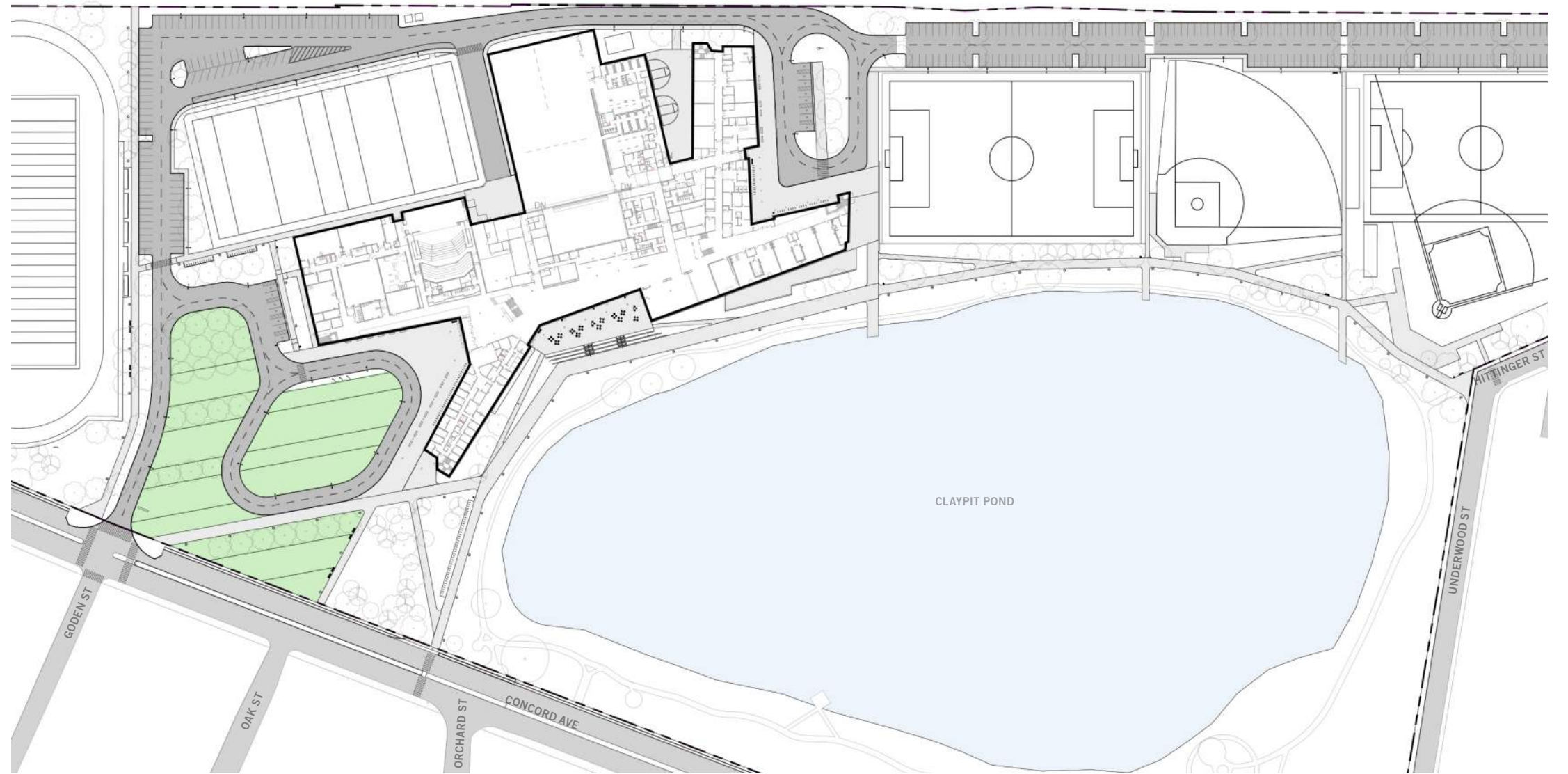


PLANTING PALETTE

MARCH 27, 2019

GROUNDCOVERS/ GRASSES_OPTION 3

Lawn



Legend
Lawn

PARK_OPTION 1

30% *Panicum virgatum shenandoah*
- Switchgrass

15% *Ceanothus americanus* - New Jersey Tea

10% *Rhododendron viscosum* - Swamp Azalea

20% *Clethra alnifolia* 'Sixteen Candles'
- Summersweet

10% *Ilex glabra* 'Shamrock' - Inkberry

15% *Ilex verticillata* 'Red Sprite'
- Winterberry

Summer Switchgrass



Summer New Jersey Tea



Summer Swamp Azalea



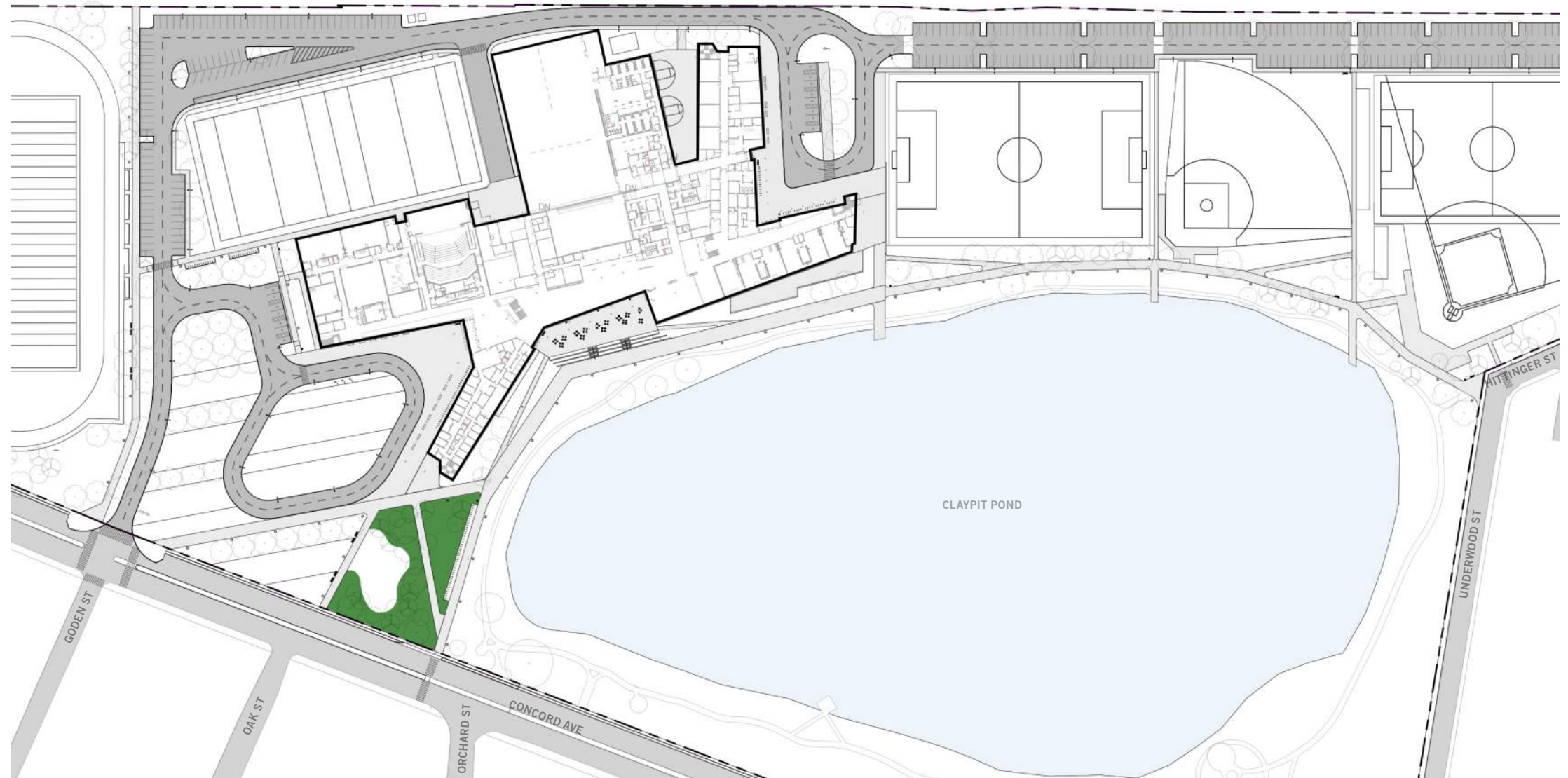
Summer Summersweet



Summer Inkberry



Summer Winterberry



Legend

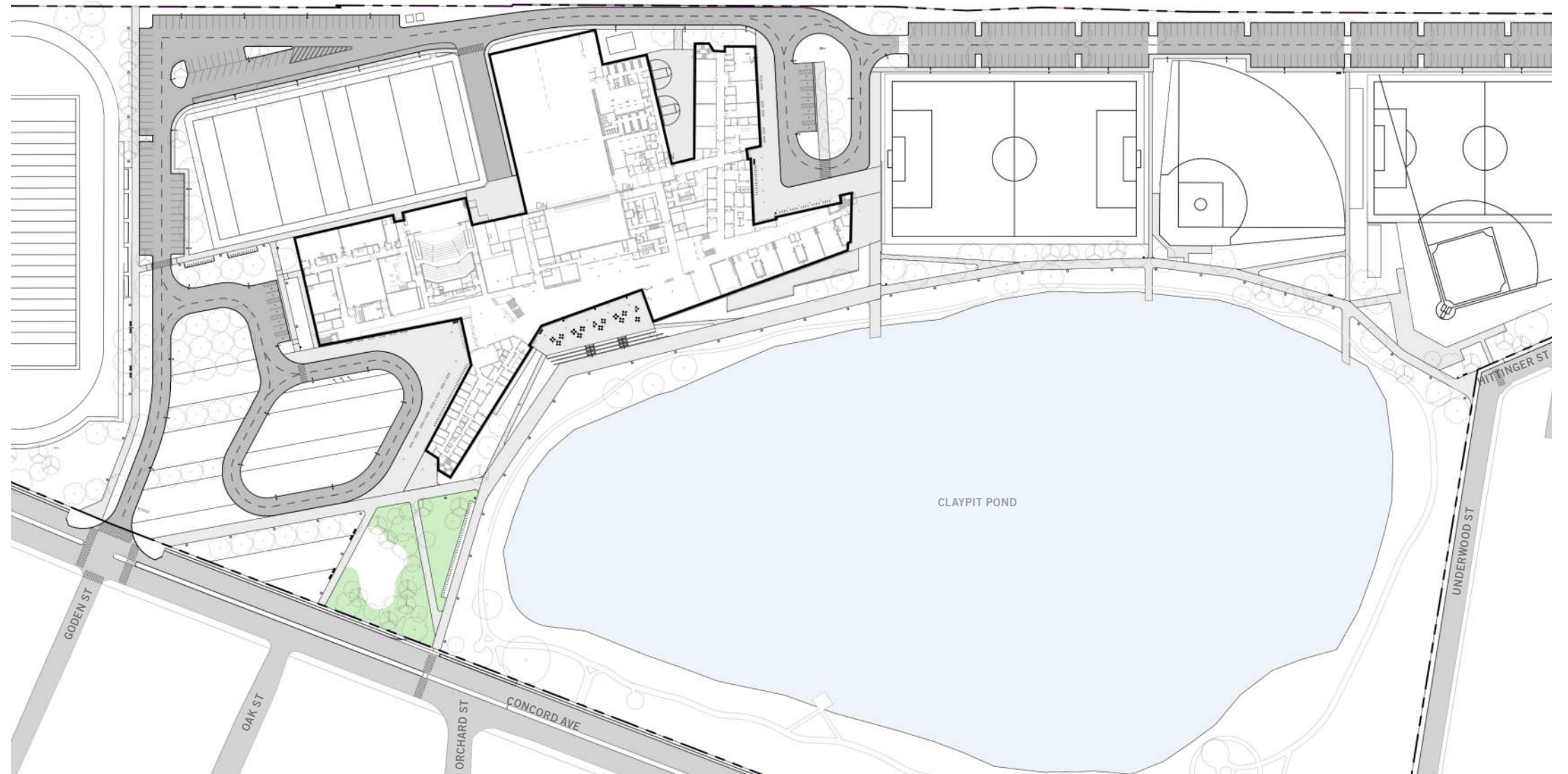
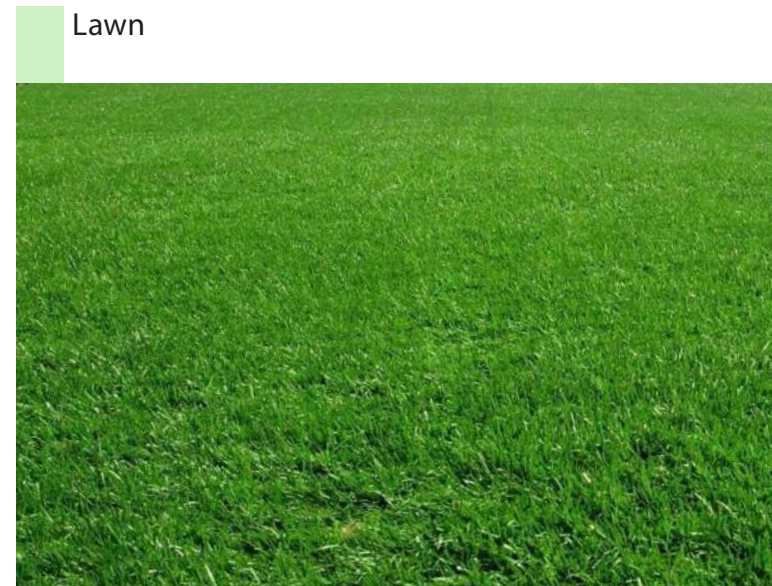
 Park

PLANTING PALETTE

MARCH 27, 2019

PARK_OPTION 2

Lawn



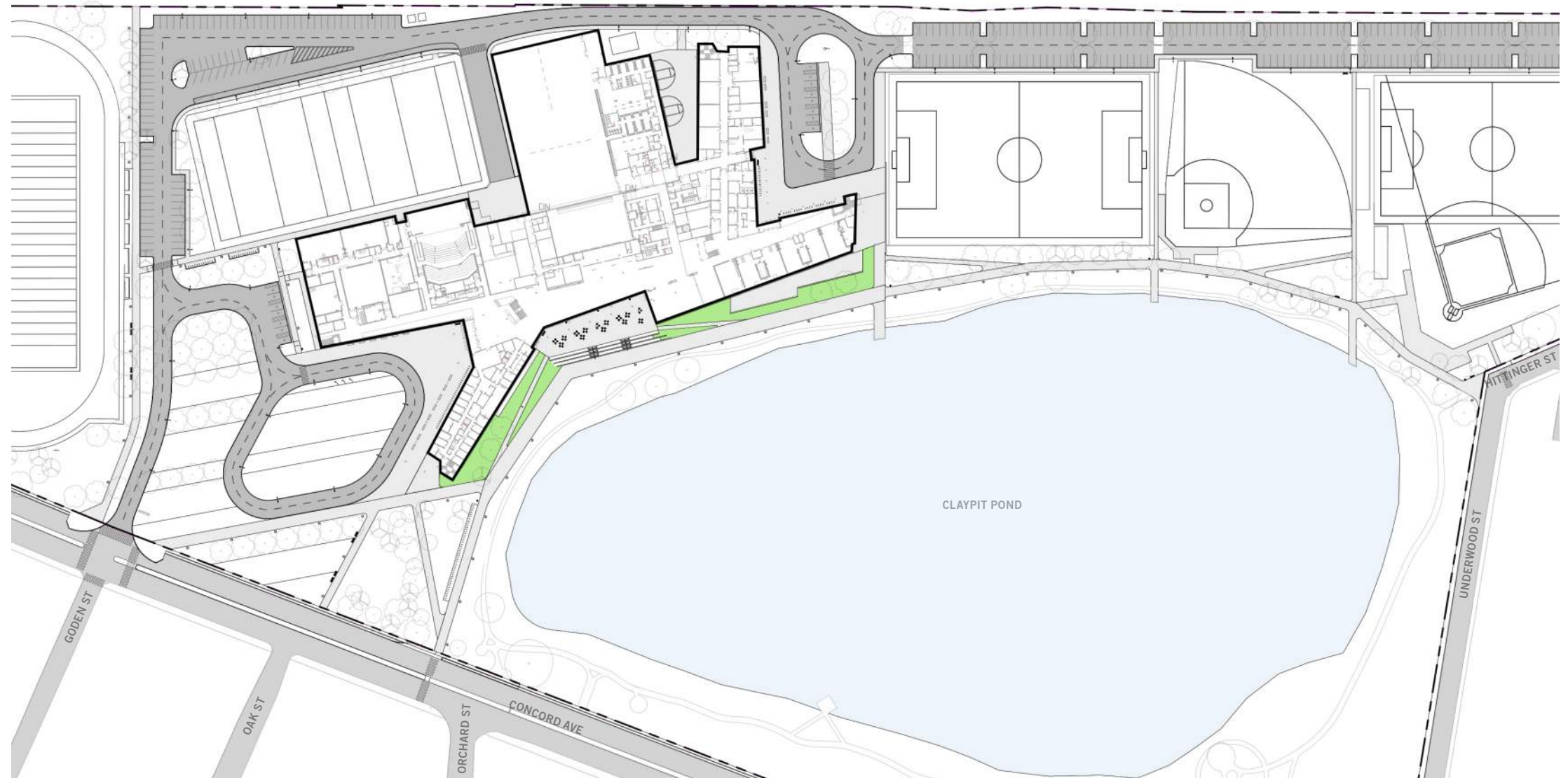
Legend
Lawn

SHRUBS

Scientific name: Cotoneaster horizontalis

Common name: Rock Spray Cotoneaster

Summer
Rock Spray Cotoneaster



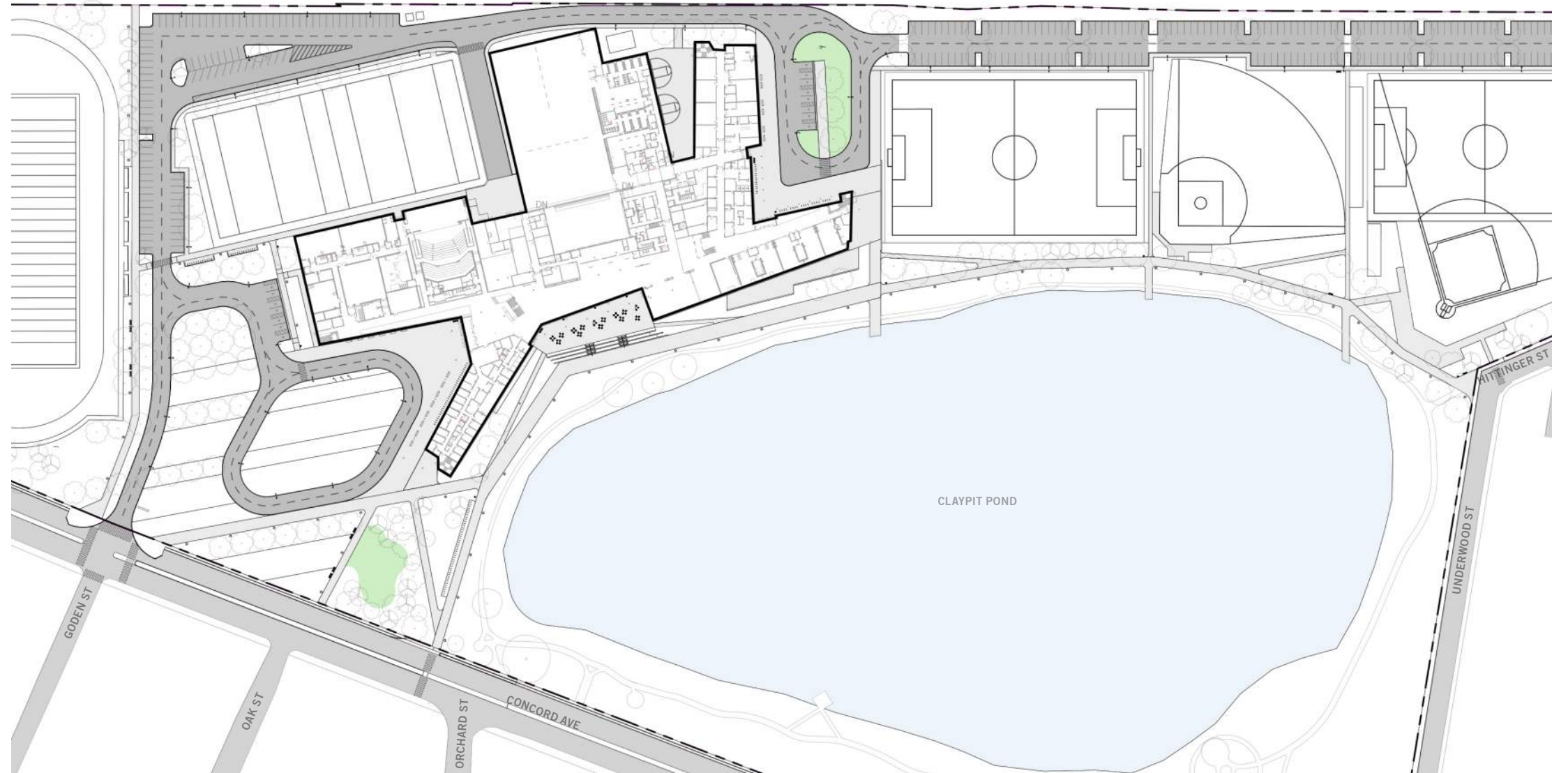
Legend
Shrubs

PLANTING PALETTE

MARCH 27, 2019

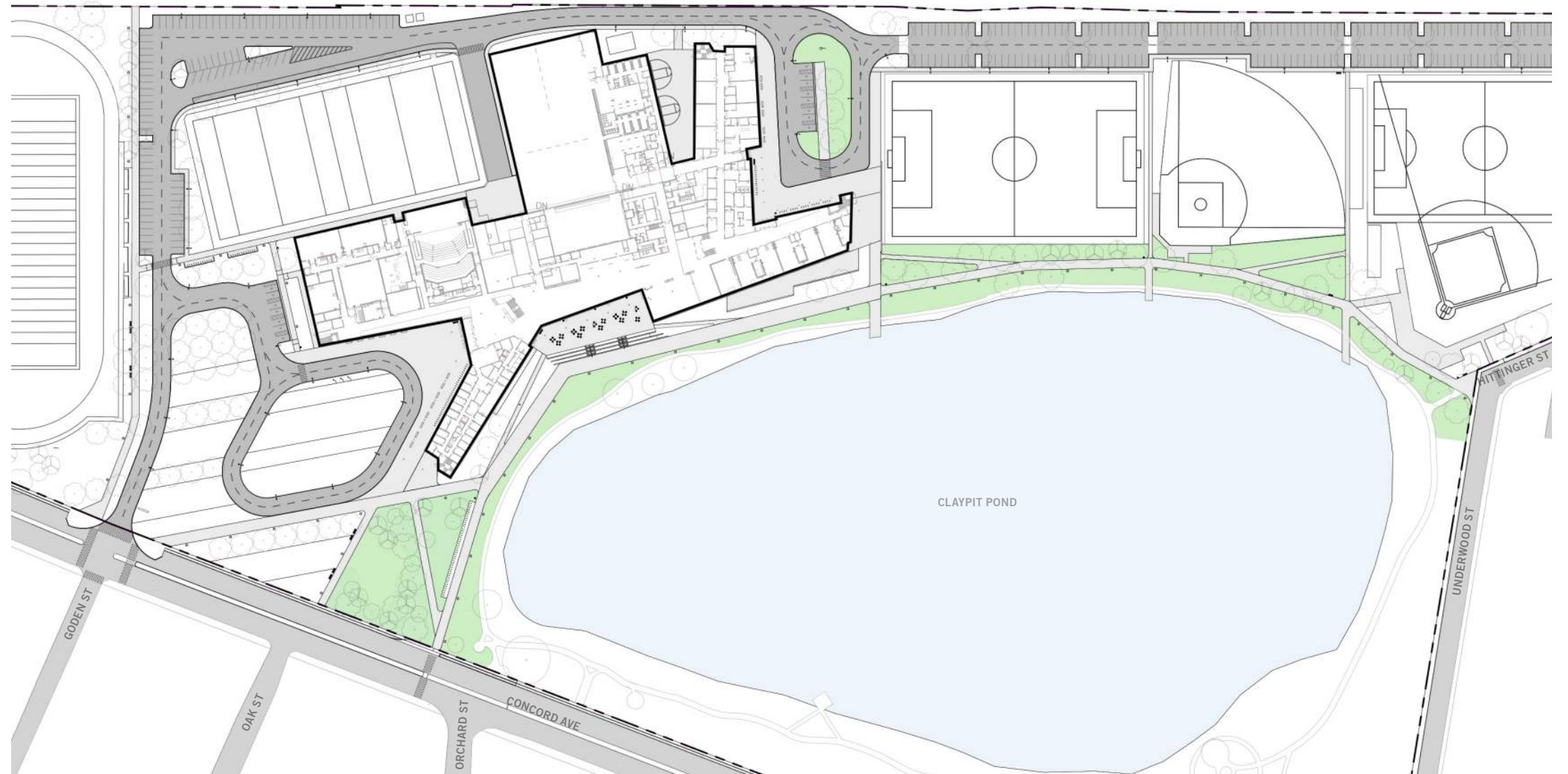
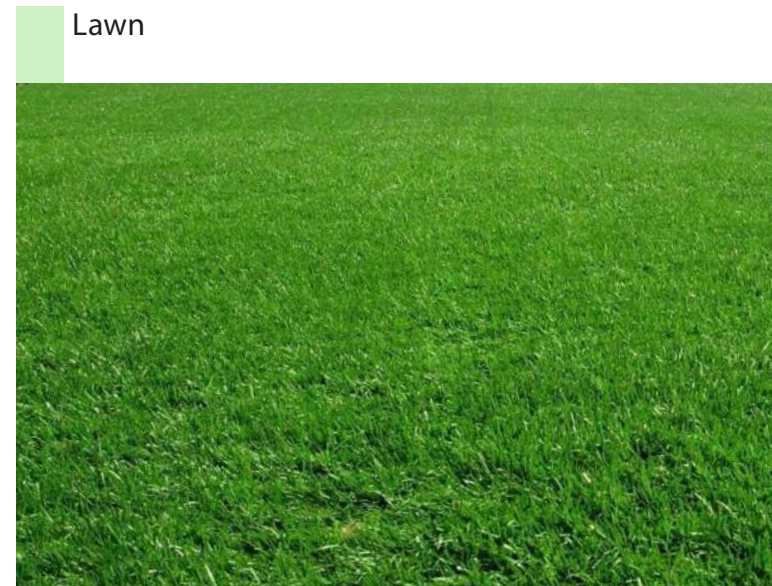
Lawn

Lawn



EAST FIELDS

Lawn



Legend

Lawn

LAWN

Lawn



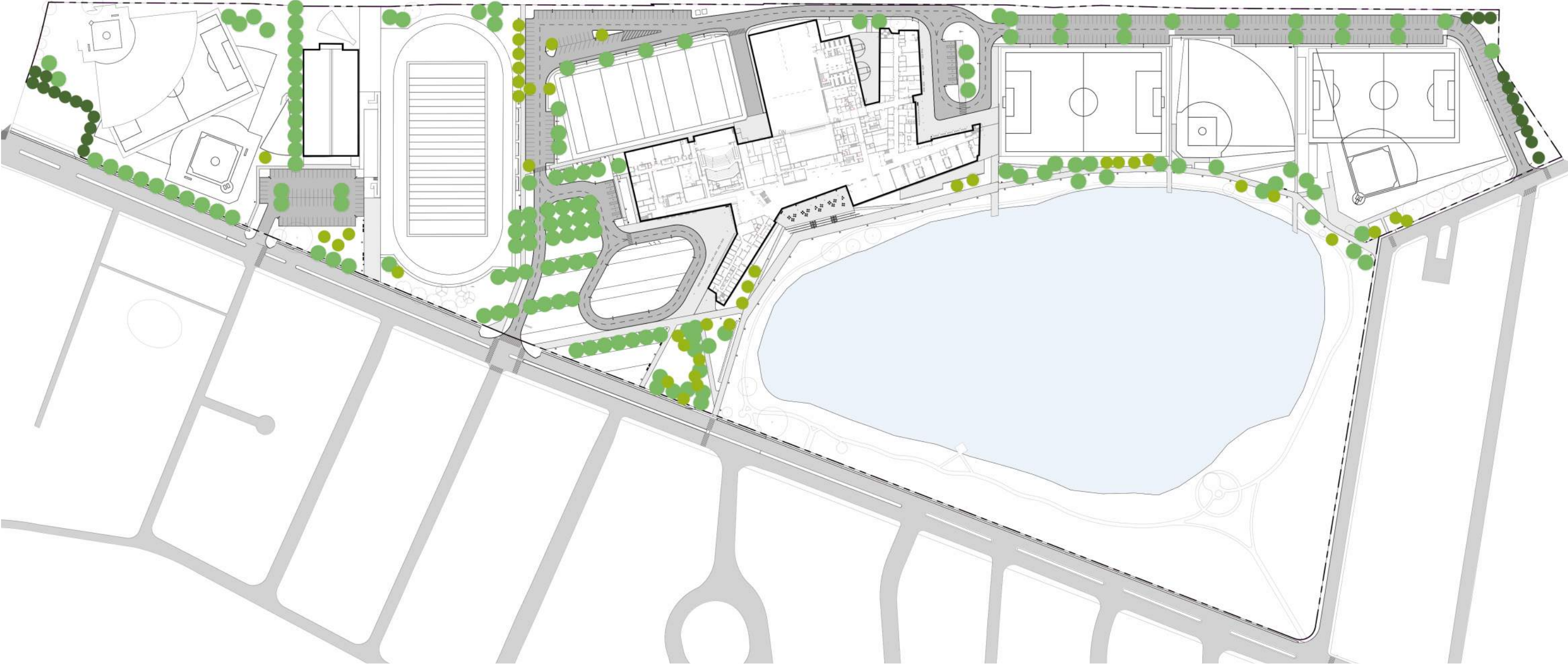
Legend
Lawn

TREES

OVERALL TREE TYPES

Legend

- Evergreen Trees
- Deciduous Canopy Trees
- Flowering Trees



PLANTING PALETTE

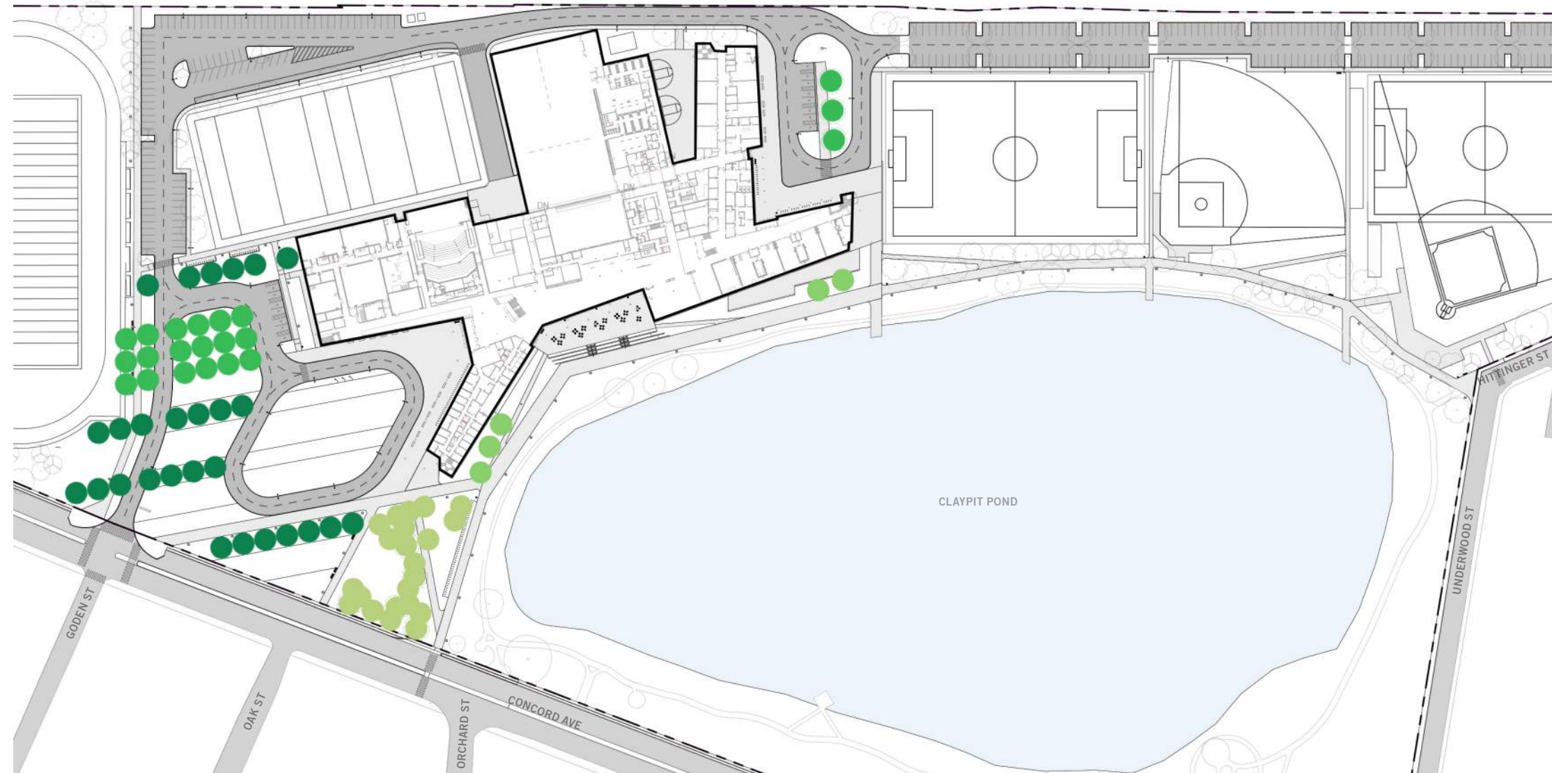
MARCH 27, 2019

TREES AT BUILDING

Trees at building

Legend

- Drop-off Tree Type A
- Drop-off Tree Type B
- Trees at Building Slopes
- Park Trees



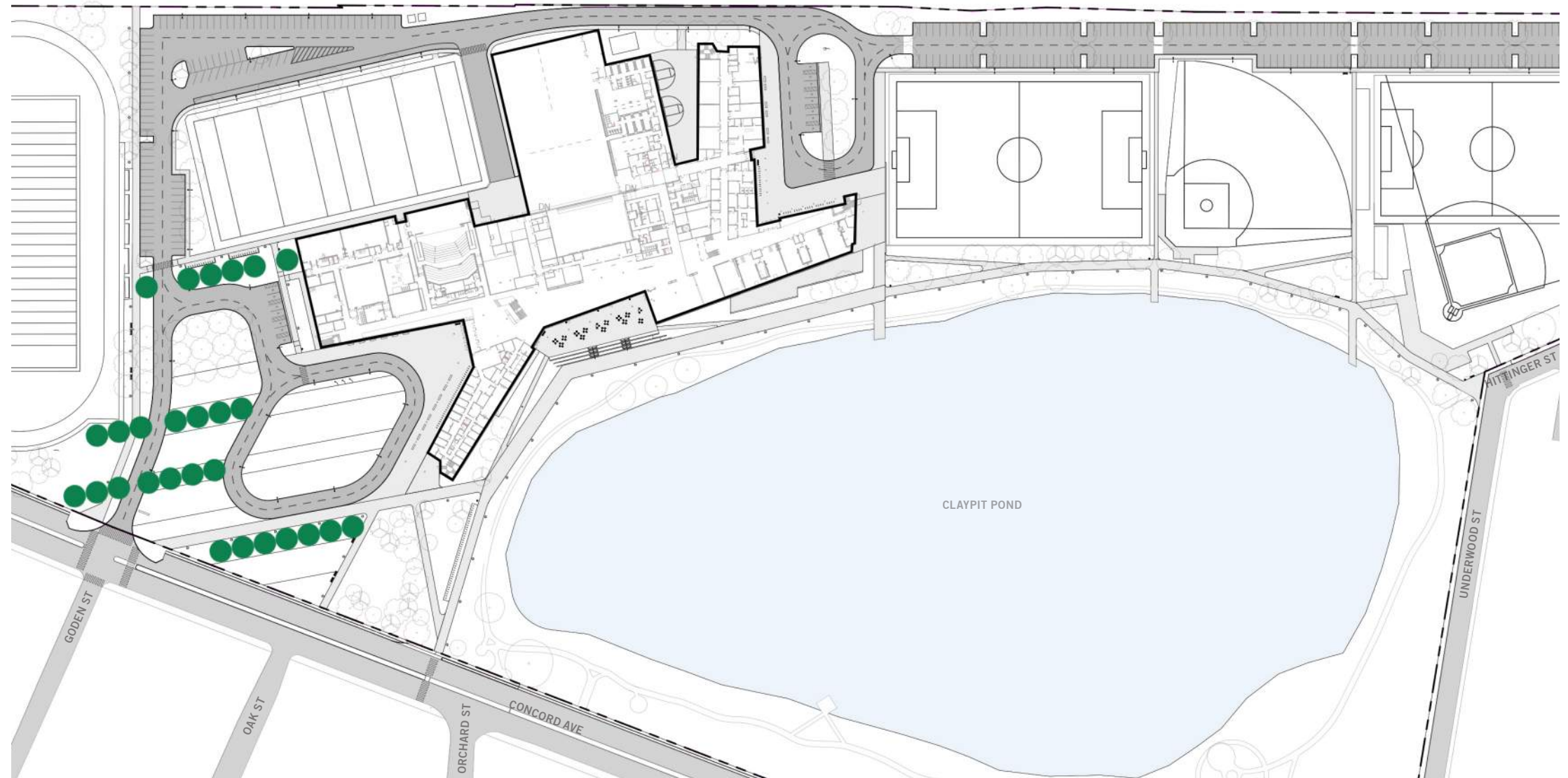
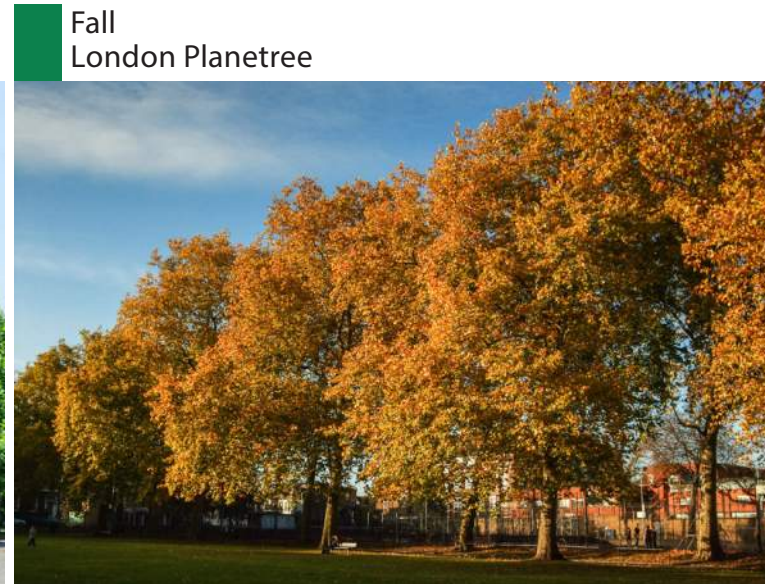
PLANTING PALETTE

MARCH 27, 2019

DROP-OFF TREE TYPE A

Scientific name: *Platanus x acerifolia*

Common name: London Planetree



Legend

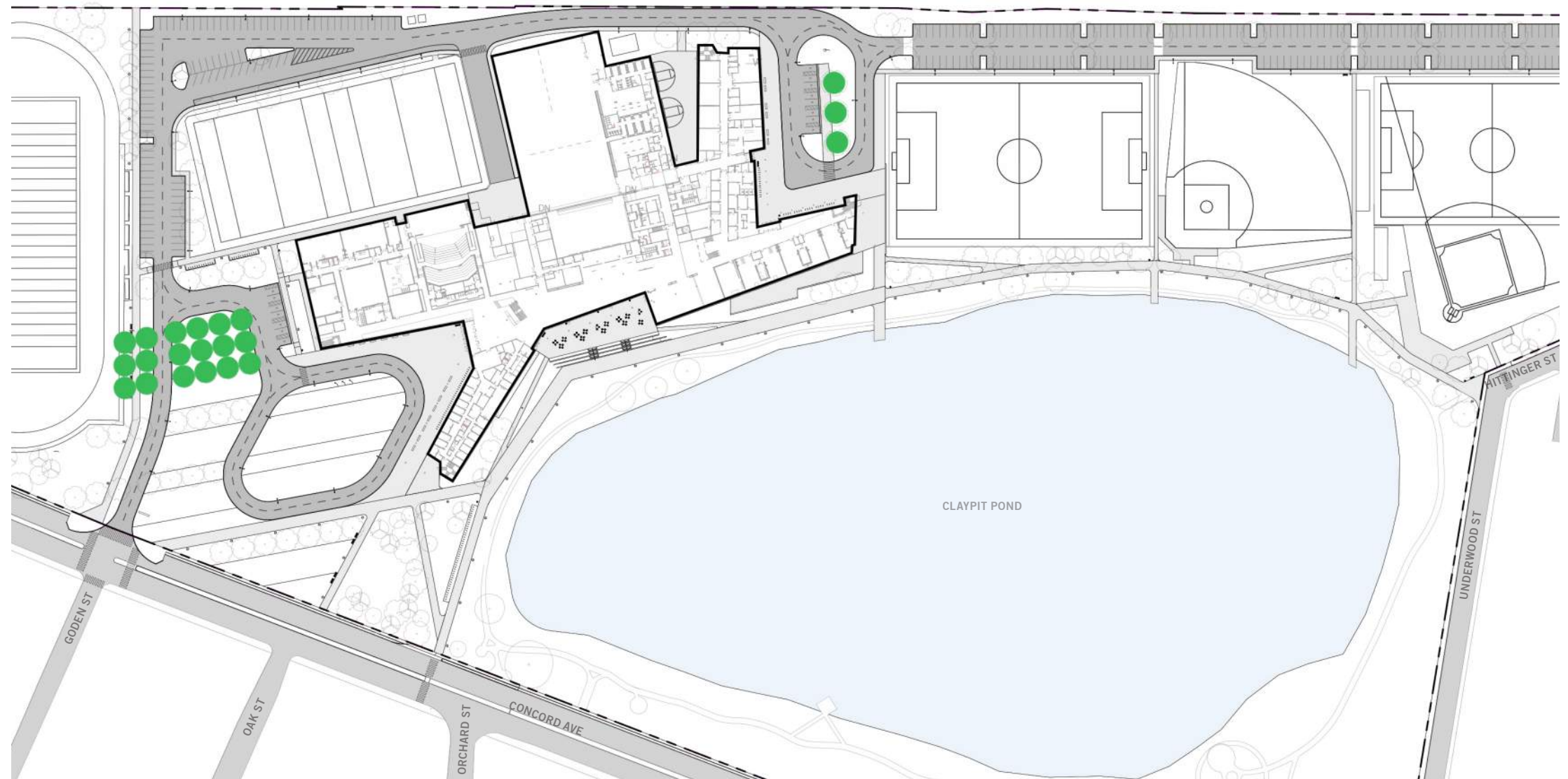
- Deciduous Canopy Trees
London Planetree

PLANTING PALETTE

MARCH 27, 2019

DROP-OFF TREE TYPE B_OPTION 1

Scientific name: *Tilia americana*
Common name: American Linden



- Legend
- Deciduous Canopy Trees American Linden

PLANTING PALETTE

MARCH 27, 2019

TREES AT BUILDING SLOPES

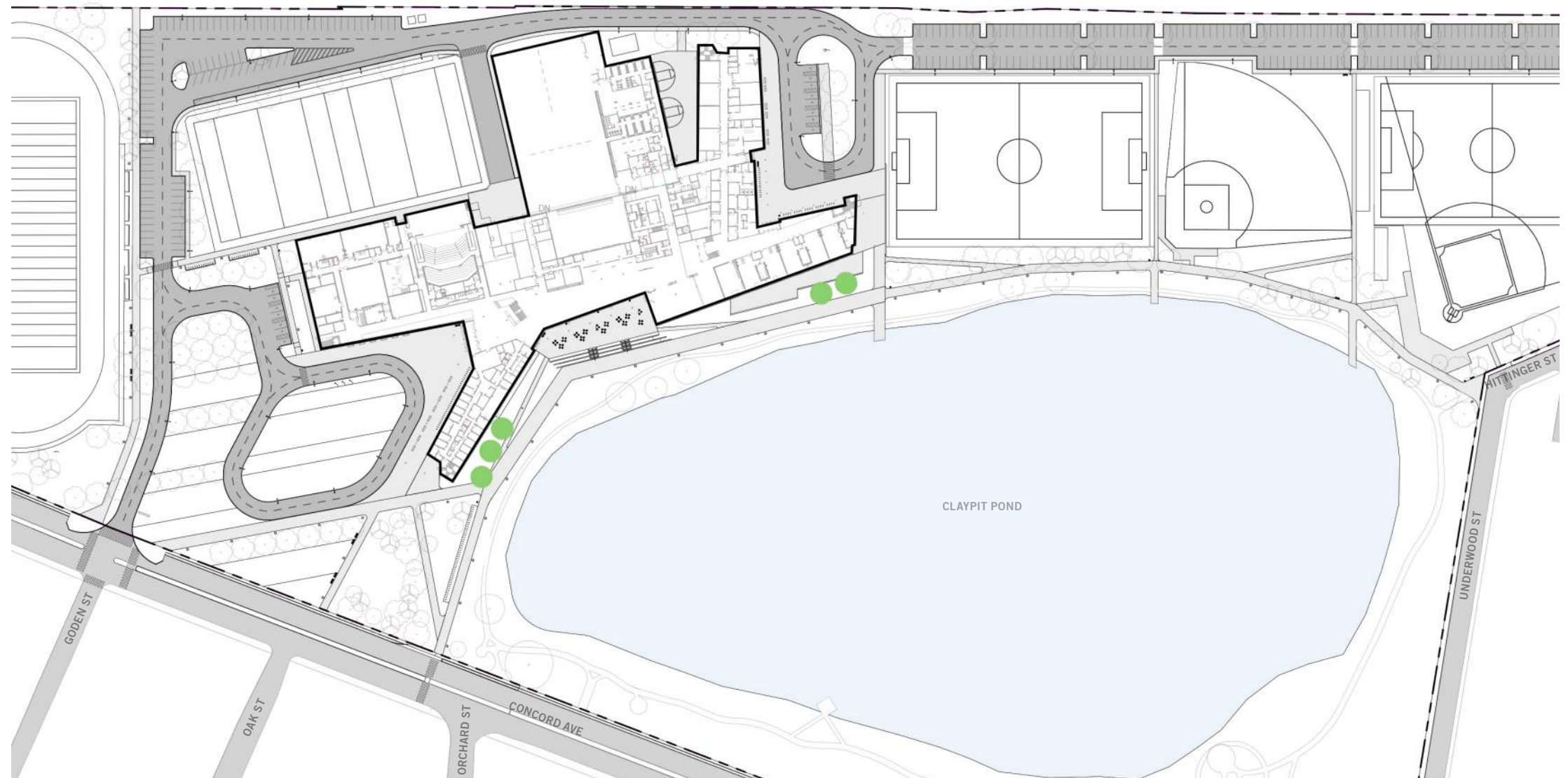
Scientific name: Amelanchier arborea

Common name: Serviceberry

Spring
Serviceberry



Summer
Serviceberry



Legend

- Flowering Trees
Eastern Redbud and Serviceberry

PLANTING PALETTE

MARCH 27, 2019

PARK TREES

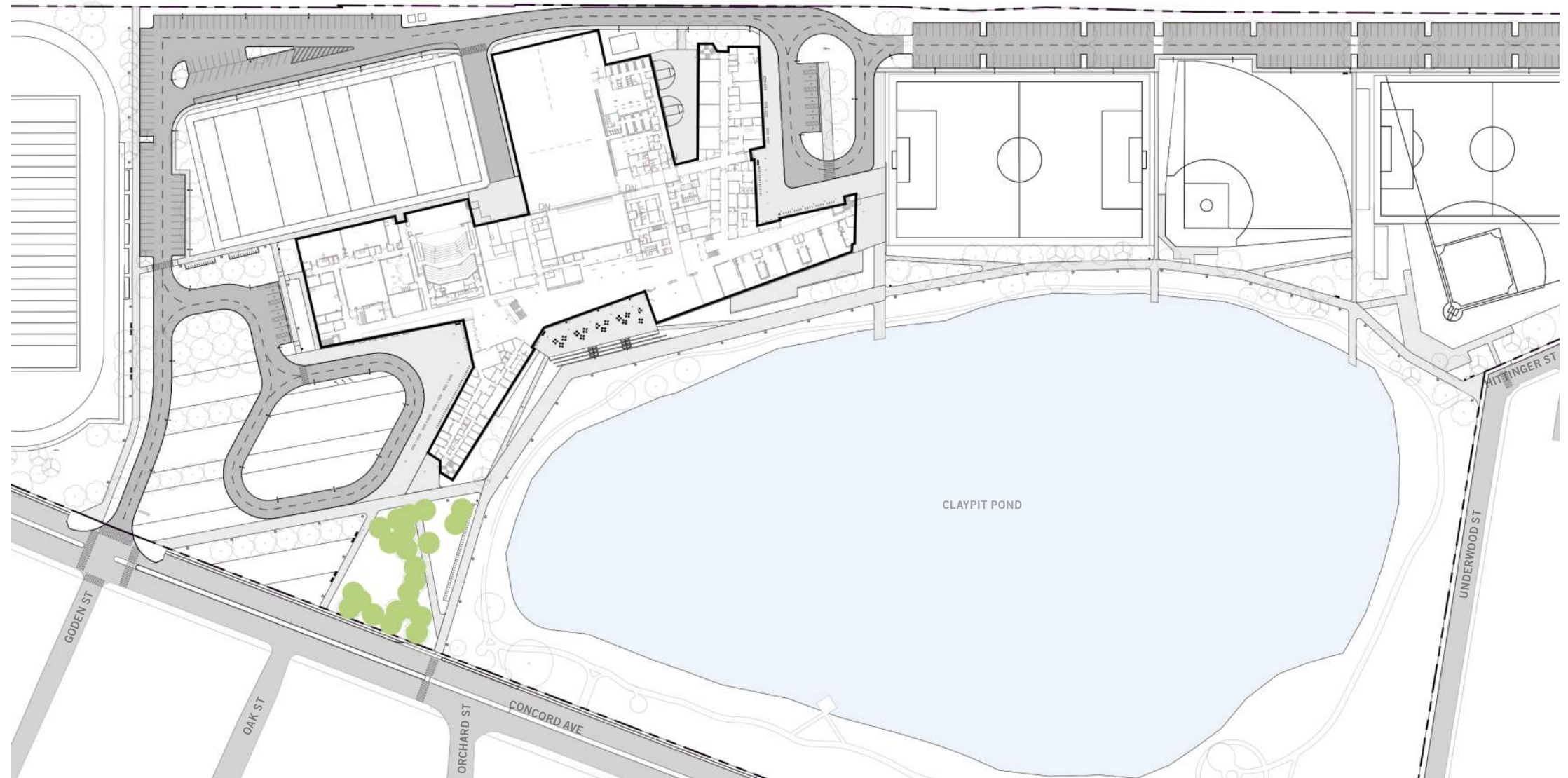
Scientific name: *Acer rubrum*
 Common name: Red maple

Scientific name: *Ulmus americana*
 Common name: American Elm

Scientific name: *Amelanchier arborea*
 Common name: Serviceberry

Scientific name: *Quercus rubra*
 Common name: Northern Red Oak

Scientific name: *Cercis canadensis*
 Common name: Eastern Redbud



- Legend
- Flowering Trees and Deciduous Canopy Trees

PLANTING PALETTE

MARCH 27, 2019

SITE LIGHTING

CONSOLIDATED LIGHTING PLAN

Legend

- Pedestrian lights
- Street lights
- Ceiling Uplights
- Recessed Downlight
- Surface Mounted Cove Lighting
- Surface mounted Linear Grazer (Stairs Glow)

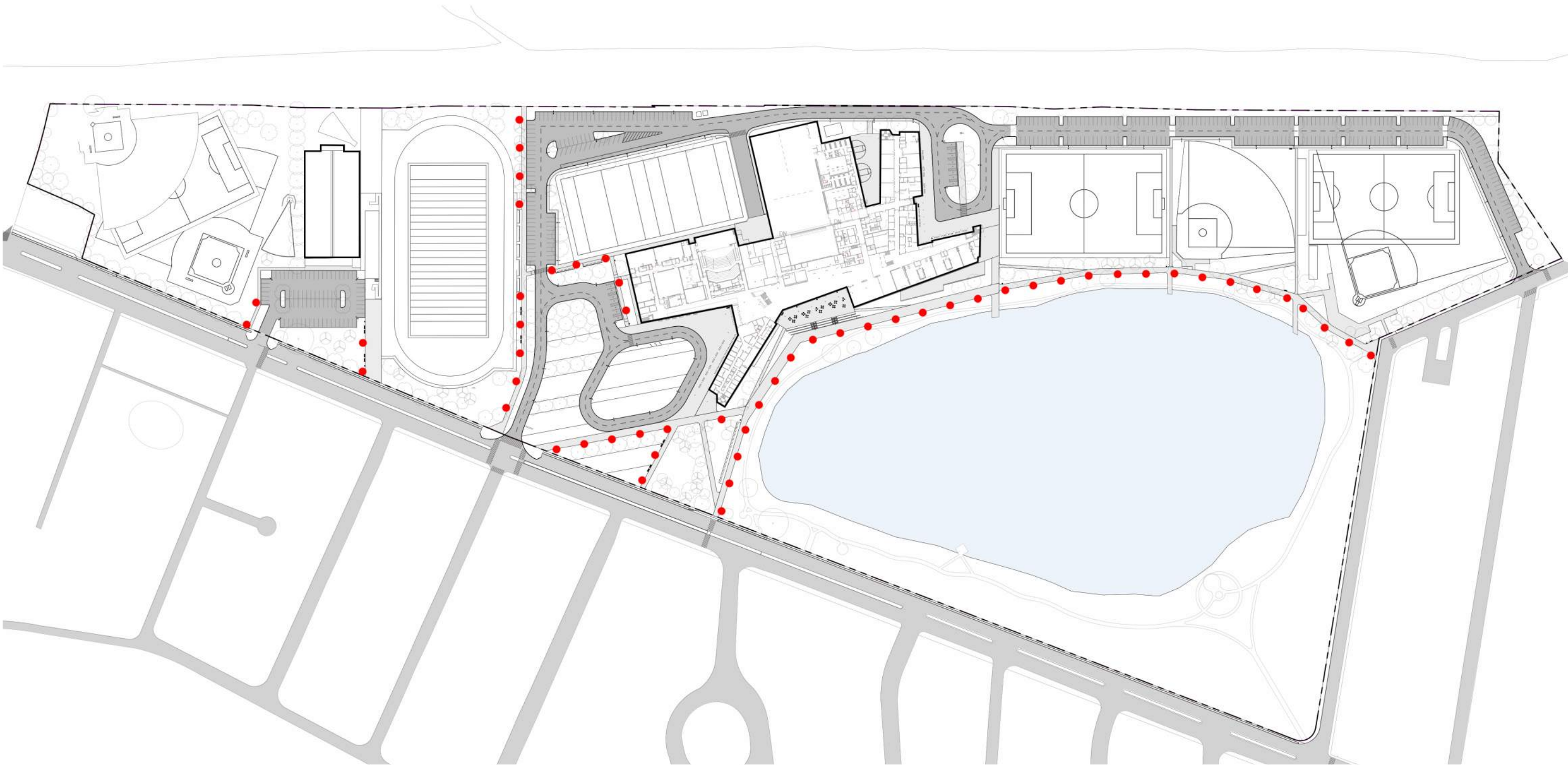


SITE LIGHTING

MARCH 27, 2019

PEDESTRIAN LIGHTS

PEDESTRIAN LIGHTS: 55 TOTAL



PEDESTRIAN LIGHTS LOCATION

MARCH 27, 2019

PUREFORM PPT

Family: PureForm

Model: PPT

Manufacturer: Signify/ Philips

Pole height: 10'-20'

Spacing: 6xHM = 72'

Finish: Dark gray/ Medium gray

Color temperature: Direct amber -
2700K - 3000K - 4000K - 5000K

LED distribution type: 1, 3, 5

BUG rating: B1-U0-G1

Frosted lense: Frosted edge

Lumen output: 2421

Total Watts: 22, 30, 52, 75, 96

Material: Die-cast aluminum

Cost: \$2,800 (12' pole height.
Includes freight but does not include
contractor markup or installation)



PEDESTRIAN LIGHTS

MARCH 27, 2019

LIGMAN SYNDY

Family: Syndy

Model: USY-20932

Manufacturer: Ligman

Pole height: 9'-10.11"

Spacing:

Finish: Black, Dark grey, metallic silver, matte silver

Color temperature: 2700K - 3000K - 3500K - 4000K

LED distribution type: 5

BUG rating: B1-U2-G1

Frosted lense: N/A

Lumen output: 3,139

Total Watts: 55

Material: Marine grade aluminum

Cost: \$2,320



PEDESTRIAN LIGHTS

MARCH 27, 2019

LIGMAN LALUNA INDIRECT POST TOP

Family: Laluna

Model: USY-20002

Manufacturer: Ligman

Pole height: 6.5'-13'

Spacing:

Finish: Black, Dark grey, metallic silver, matte silver

Color temperature: 2700K - 3000K - 3500K - 4000K

LED distribution type: 5

BUG rating: B2-U2-G1

Frosted lense: N/A

Lumen output: 2,270

Total Watts: 48

Material: Marine grade aluminum

Cost: \$

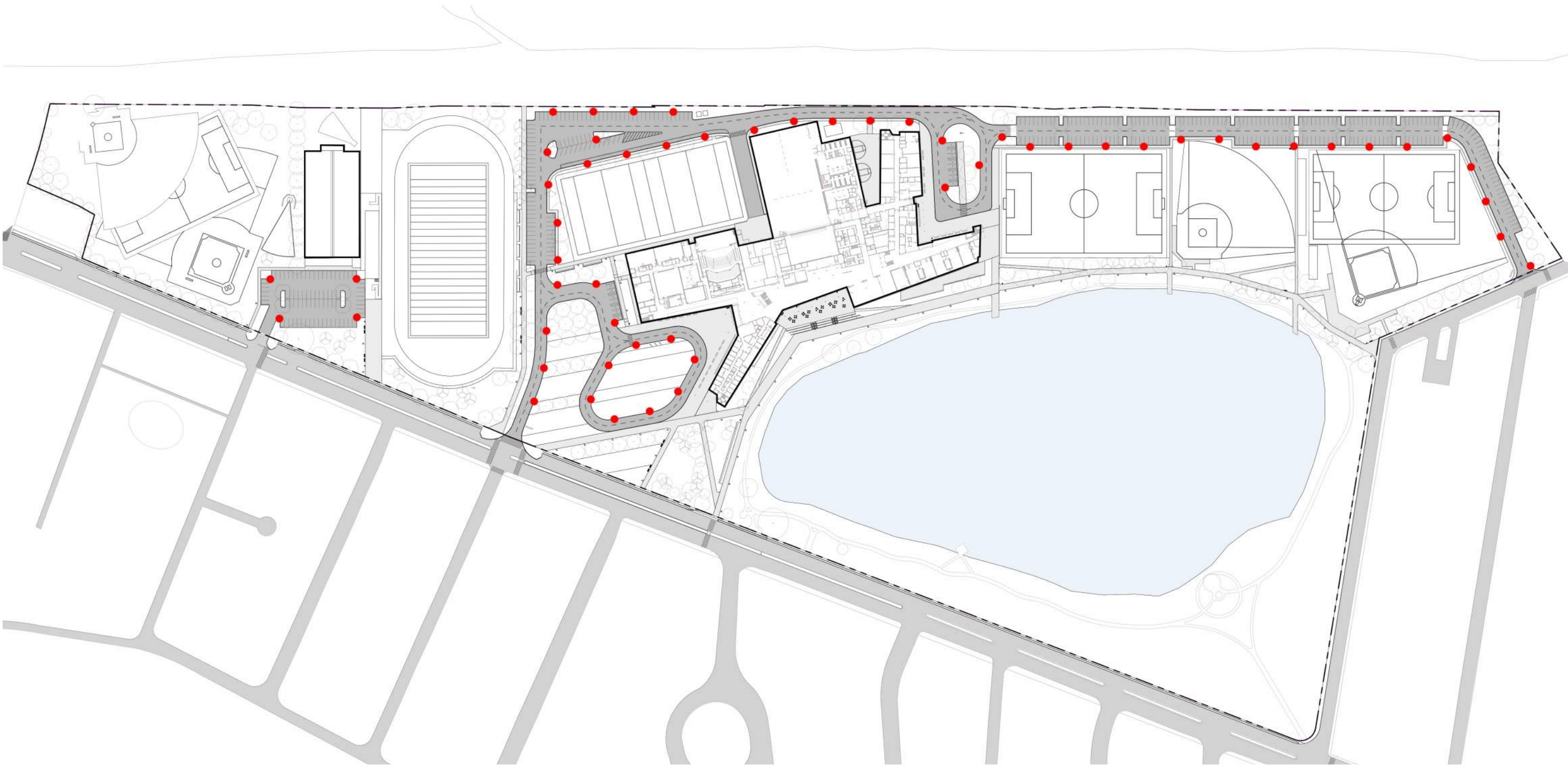


PEDESTRIAN LIGHTS

MARCH 27, 2019

STREET LIGHTS

STREET LIGHTS: 56 TOTAL



STREET LIGHTS LOCATION

MARCH 27, 2019

PUREFORM P26

Family: PureForm

Model: P26

Manufacturer: Signify/ Gardco

Pole height: 8', 10', 12', 15', 18', 20', 25', 28', 30'

Spacing:

Finish: Black, Dark gray, Medium gray

Color temperature: 2700K - 3000K - 4000K - 5000K

LED distribution type: 2, 3, 4, 5

BUG rating: B2-U0-G2

Frosted lense: Yes

Lumen output: 8,509

Total Watts: 60, 74, 89, 101, 114, 133, 153, 169, 192, 219

Material: Die-cast aluminum

Cost: \$4,500 (25' pole, 3'-6" arm)



LIGMAN STEAMER

Family: Steamer

Model: USE-90001

Manufacturer: Ligman

Pole height: 10'-20'

Spacing:

Finish: Black, Dark grey, metallic silver, matte silver

Color temperature: 2700K - 3000K - 3500K - 4000K

LED distribution type: 2, 3, 4

BUG rating:

Frosted lense:

Lumen output: 7,999

Total Watts: 80, 50, 29

Material: Aluminum

Cost: \$2,500



STREET LIGHTS

MARCH 27, 2019

LIGMAN MARTINI

Family: Martini

Model: UMN-91261

Manufacturer: Ligman

Pole height: 10'-20'

Spacing:

Finish: Black, Dark grey, metallic silver, matte silver

Color temperature: 2700K - 3000K - 3500K - 4000K

LED distribution type: 2, 3, 4

BUG rating: B3-U0-G0

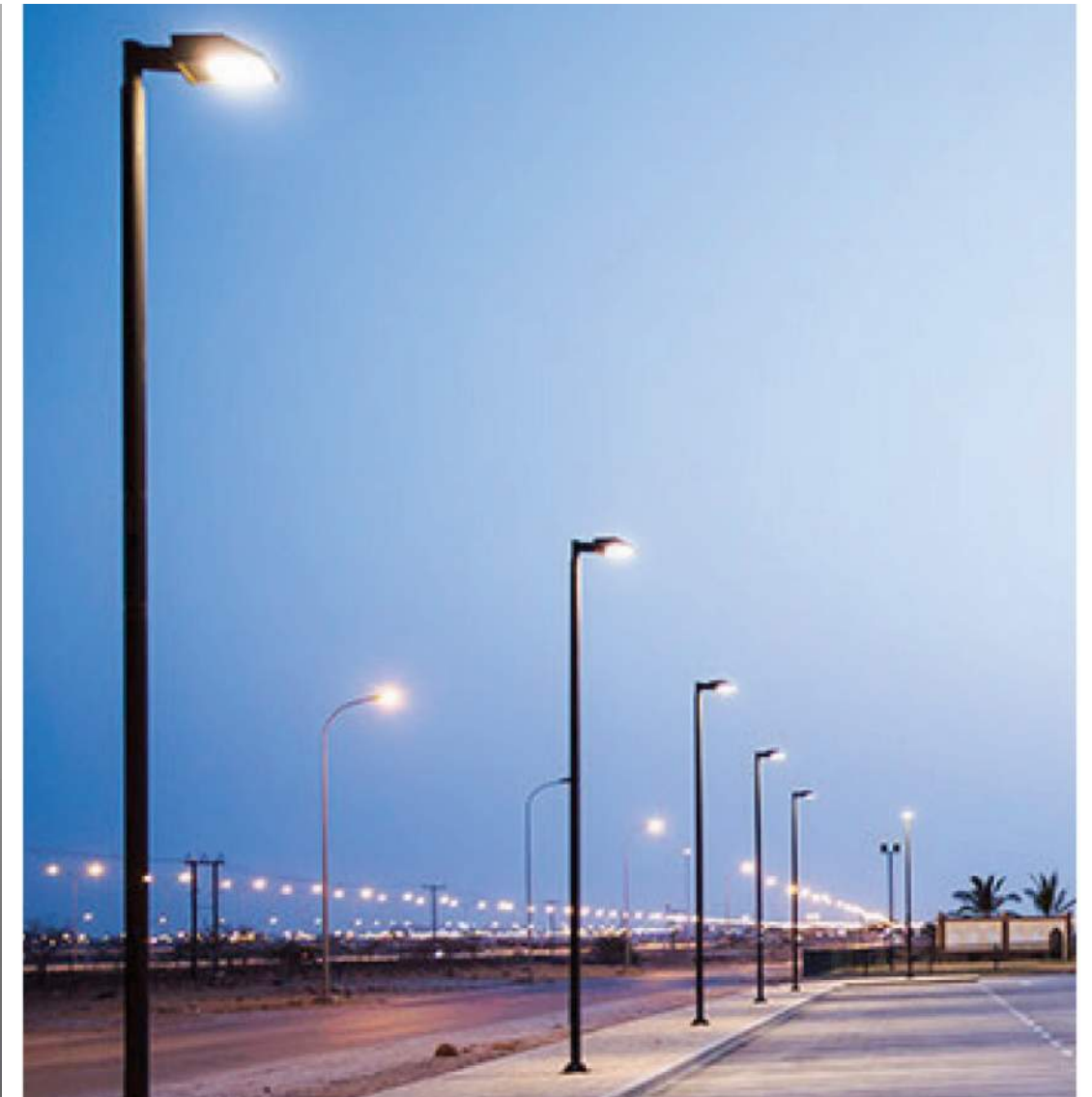
Frosted lense:

Lumen output: 4,248

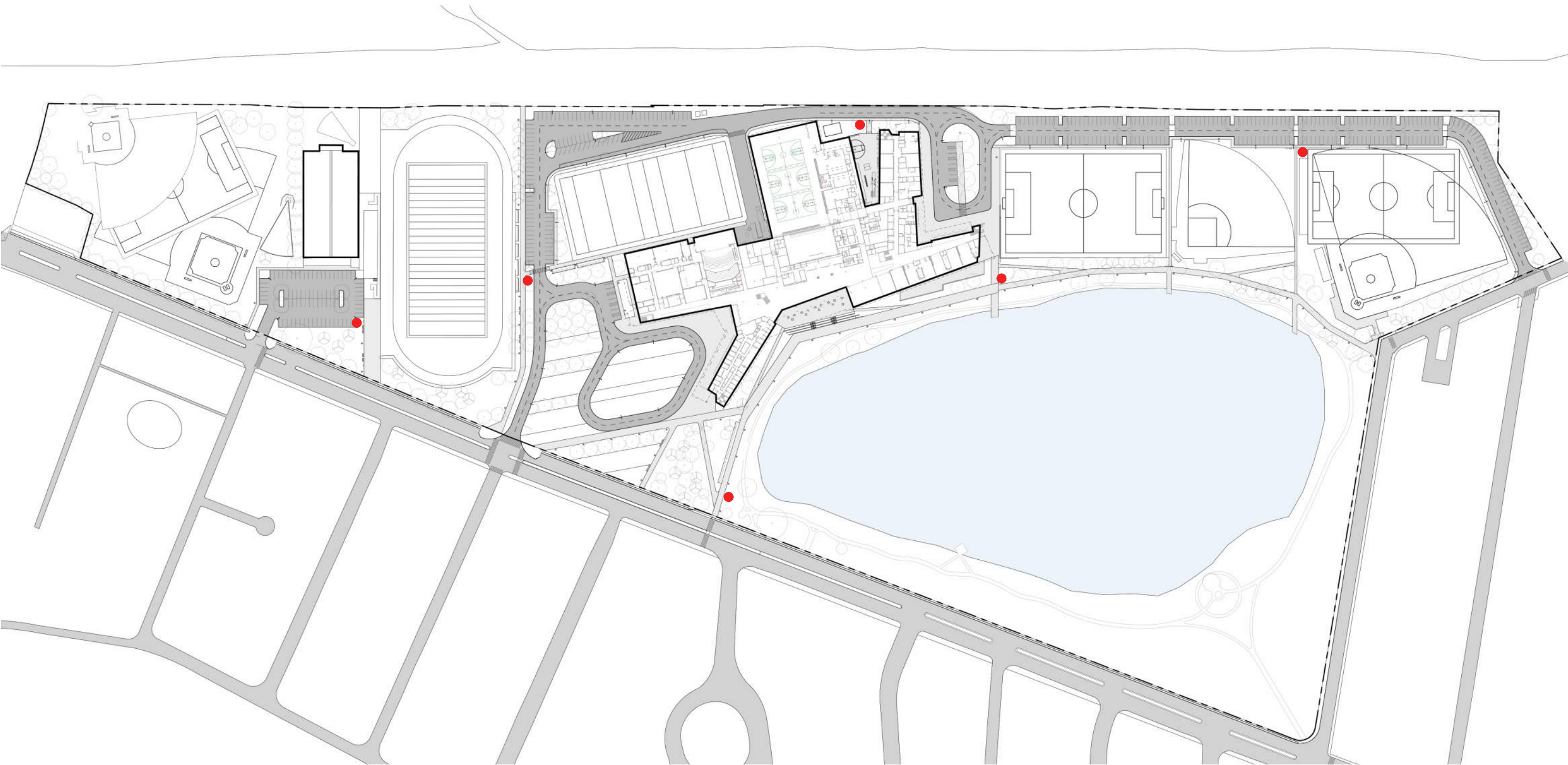
Total Watts: 39

Material: Marine grade aluminum

Cost: \$1,990



EMERGENCY BLUE LIGHT PHONE: 6 TOTAL



EMERGENCY BLUE LIGHT PHONE LOCATION

MARCH 27, 2019



CB 1-S SIGNATURE HELP POINT

EMERGENCY BLUE LIGHT PHONE

MARCH 27, 2019



CB 2-E SIGNATURE HELP POINT

FAMILY	MODEL	MANUFACTURER	POLE HEIGHT	SPACING	FINISH	MATERIAL	FROSTED LENS	COLOR TEMPERATURE	DISTRIBUTION TYPE	BUG RATING	LUMEN OUTPUT	WATTS	COST
PEDESTRIAN													
PureForm	PPT	Signify/ Philips	10'-20'		Blk, Medium Gray, Dark gray	Die-cast alum.	Frosted edge	3000K - 4000K - 5000K - 2700K	1, 3, 5	B1-U0-G1	2,421	22, 30, 52, 75, 96	\$2,800 (12' pole, freight inc.)
Syndy	USY-20932	Ligman	9'-10.11"		Dark gray, Metallic silver, Matte silver	Alum.		2700K - 3000K - 3500K - 4000K	5	B2-U2-G1	2,270	48	\$
Laluna	USY-20002	Ligman	6.5'-13'		Dark grey, Metallic silver, Matte silver, Blk.	Cast alum.	Yes	3000K - 4000K - 5000K - 2700K	2, 3, 4, 5	LEED/Well	2,455	119, 90, 61, 47, 27	\$
STREET													
Pureform	P26	Signify/ Gardco	8'-30'		Blk, Medium Gray, Dark gray	Die-cast alum.	Yes	3000K - 4000K - 5000K - 2700K	2, 3, 4, 5	B2-U0-G2	8,509	60, 74, 89, 101, 114, 133, 153, 169, 192, 219	\$4,500 (25' POLE, 3'6" ARM)
Steamer	USE-90001	Ligman	10'-20'		Dark gray, Metallic silver, Matte silver	Alum.		2700K - 3000K - 3500K - 4000K	2, 3, 4		16,227		\$
Martini	UMN-91261	Ligman	10'-20'		Dark gray, Metallic silver, Matte silver	Alum.		2700K - 3000K - 3500K - 4000K	2, 3, 4	B3-U1-G1	16,227		\$

FIXTURE COMPARISON

MARCH 27, 2019



PPT



P26

FIXTURE COMPARISON

MARCH 27, 2019



FIXTURE COMPARISON

MARCH 27, 2019



FIXTURE COMPARISON

MARCH 27, 2019



FIXTURE COMPARISON

MARCH 27, 2019



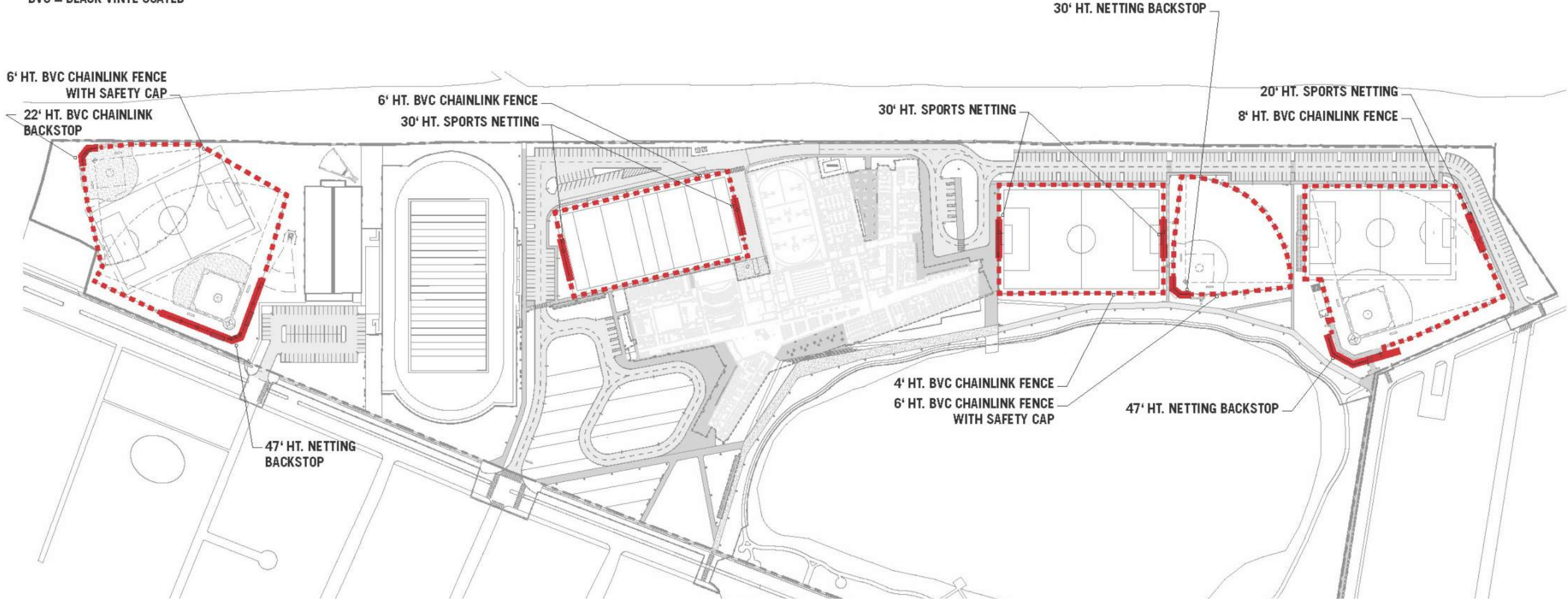
FIXTURE COMPARISON

MARCH 27, 2019

FENCING / FIELDS

PROPOSED SPORTS NETTING & FENCING

BVC = BLACK VINYL COATED

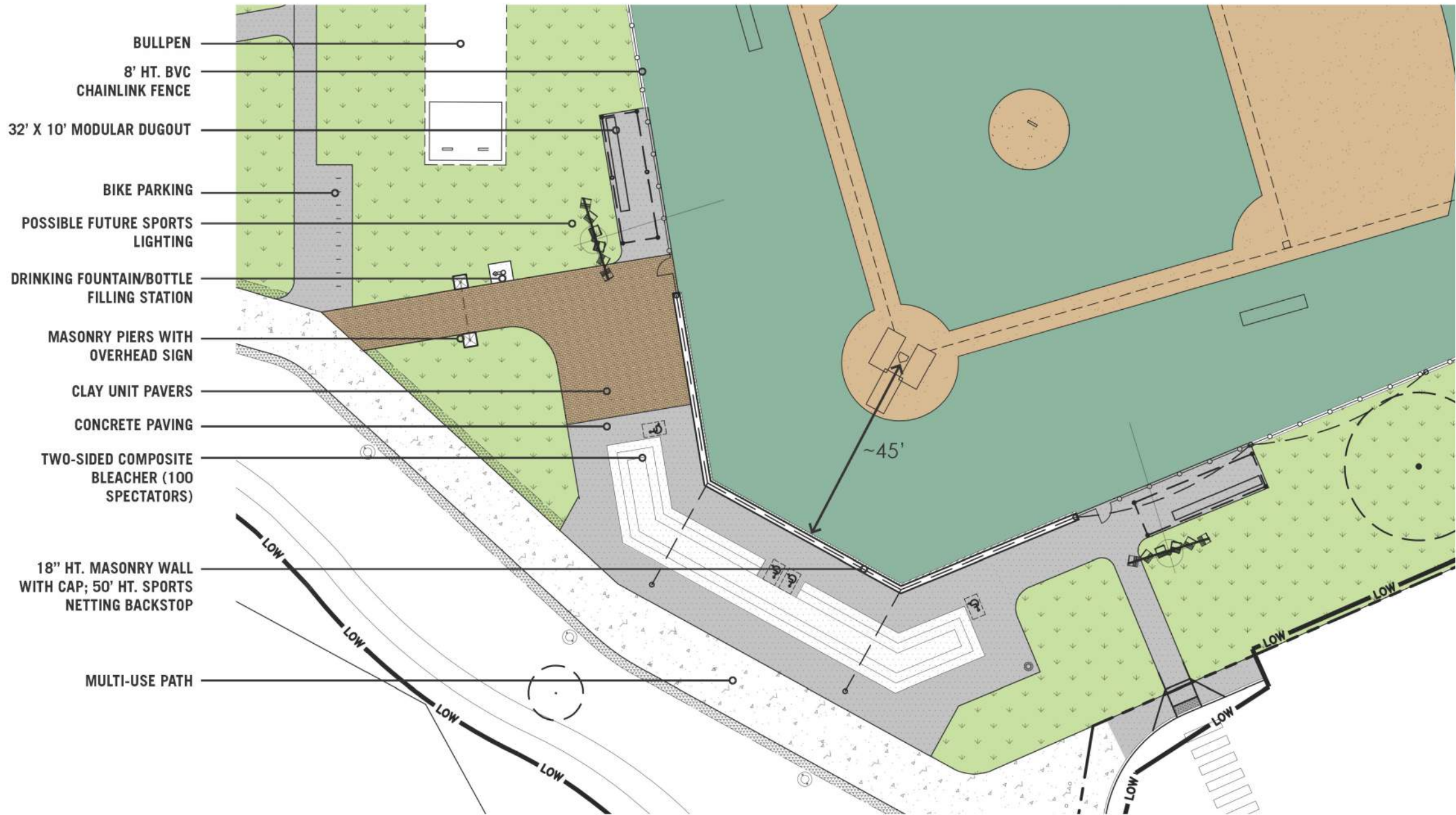


FENCING/ FIELDS

MARCH 27, 2019

VARSITY BASEBALL FIELD/ BRICKS, STANDS, GATEWAY

BRENDAN GRANT MEMORIAL FIELD



VARSITY BASEBALL FIELD/ BRICKS, STANDS, GATEWAY

MARCH 27, 2019

**BELMONT HIGH SCHOOL
BUILDING COMMITTEE MEETING
MARCH, 27 2019**