



05.08.2018 BUILDING COMMITTEE

BELMONT HIGH SCHOOL

AGENDA

01 / Site Design Update

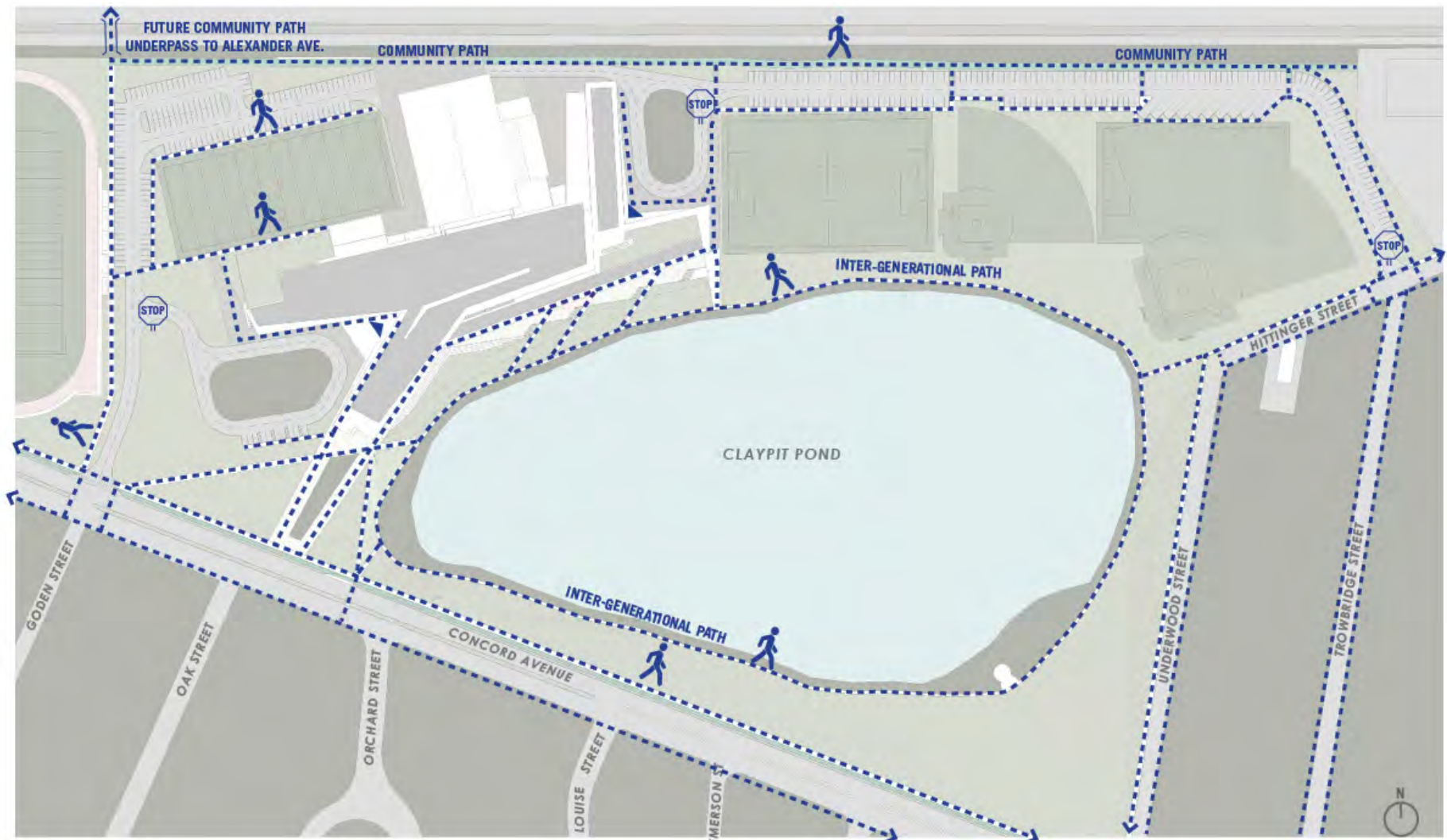
02 / Building Design Update

03 / Virtual Reality Tour

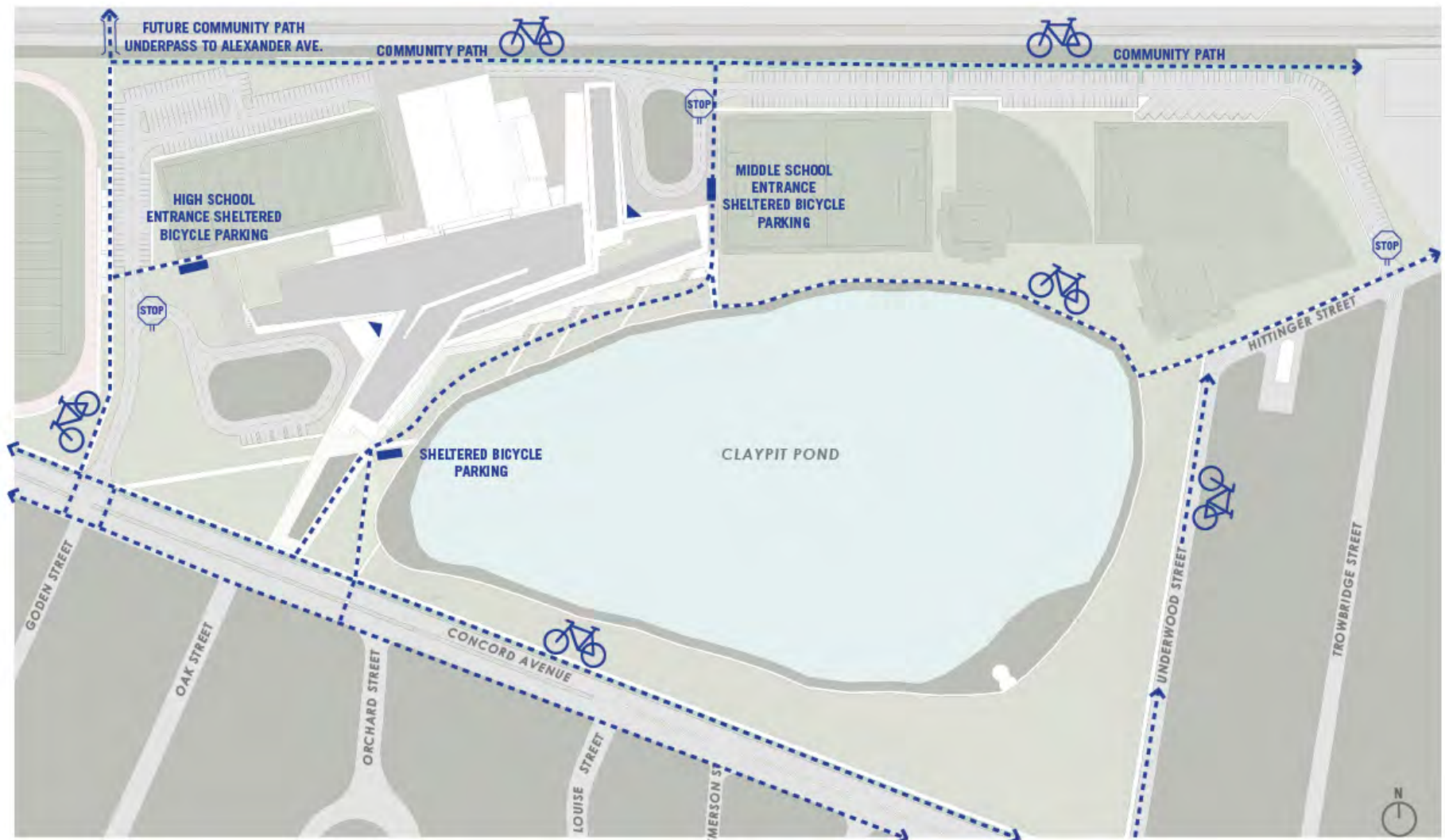
SITE PLAN



SITE PLAN - PEDESTRIAN CIRCULATION



SITE PLAN - BICYCLE CIRCULATION



SITE PLAN - VEHICULAR CIRCULATION



An aerial photograph of Belmont High School, a large, modern building with a flat roof and multiple wings. The school is surrounded by a dense forest of trees. In the foreground, there is a parking lot and a road with a crosswalk. The entire image is overlaid with a semi-transparent blue filter.

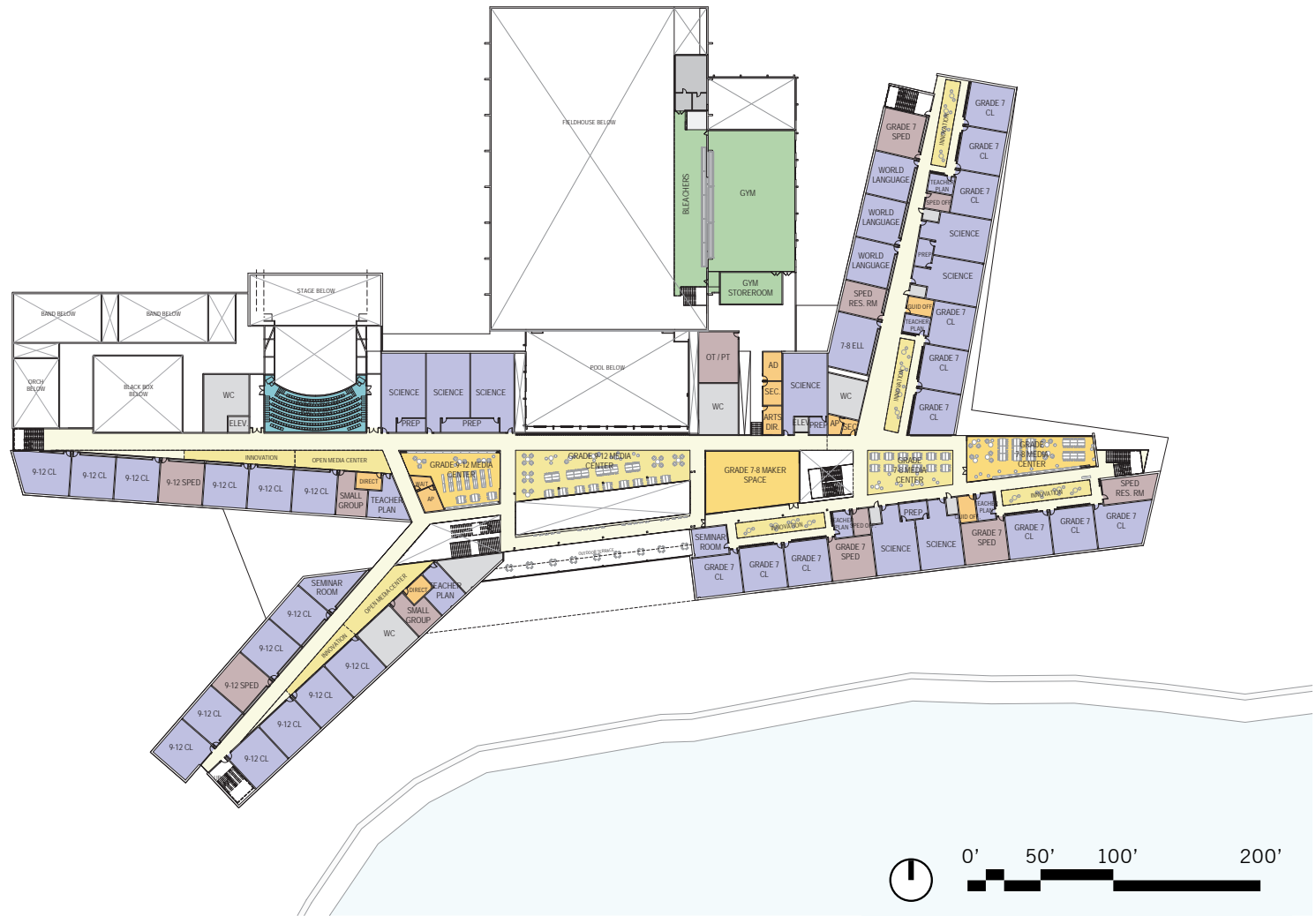
02/ BUILDING DESIGN UPDATE

BELMONT HIGH SCHOOL

LEVEL 1 PLAN



LEVEL 2 PLAN



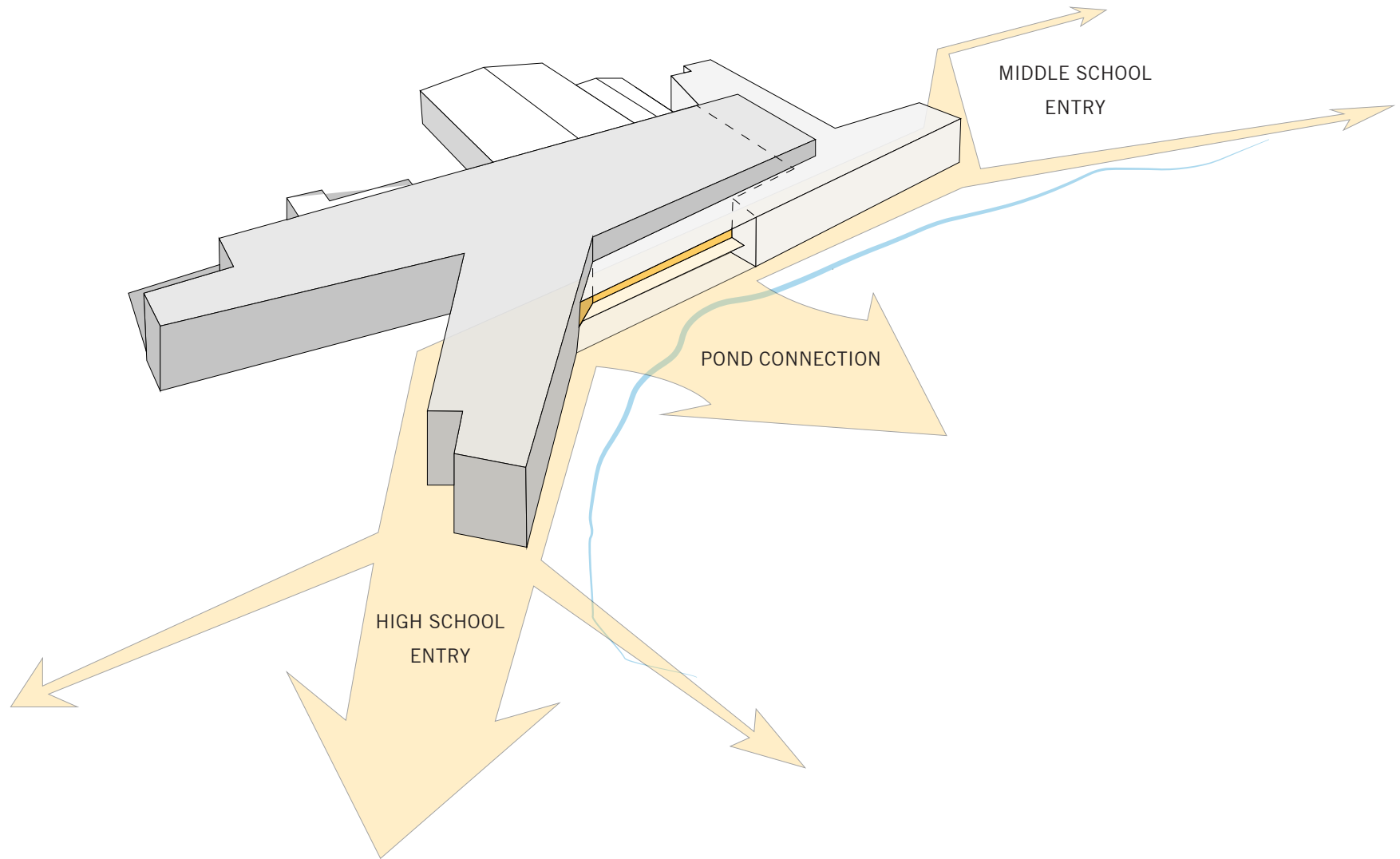
LEVEL 3 PLAN



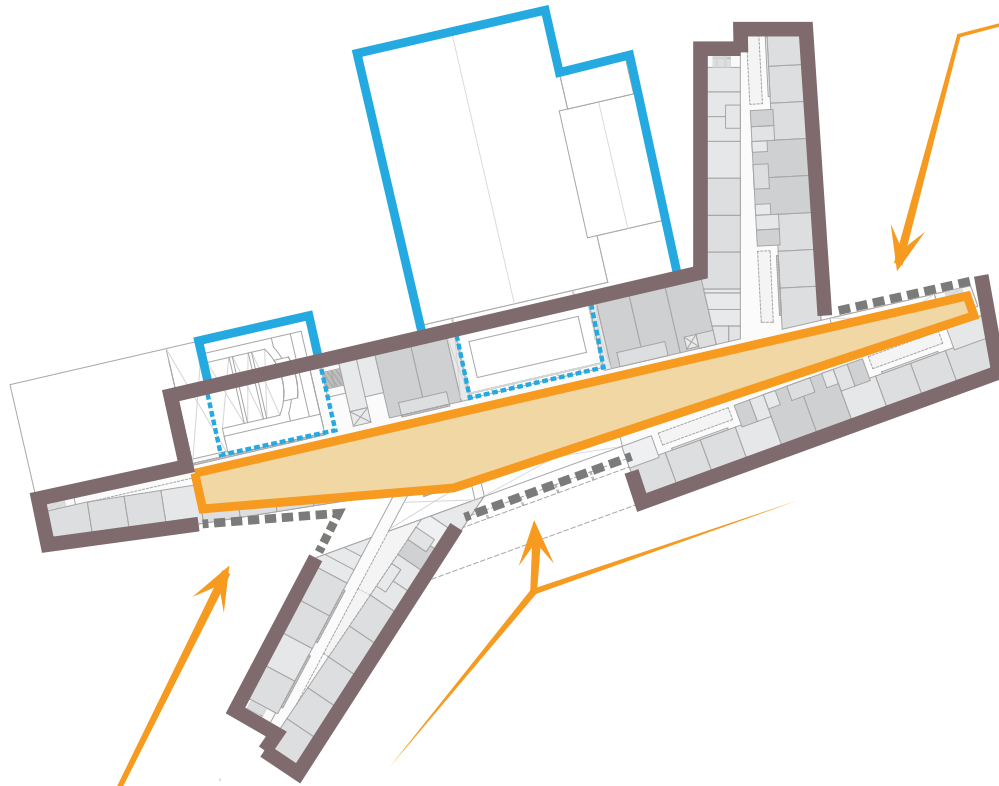
LEVEL 4 PLAN






PEDESTRIAN CONNECTIONS

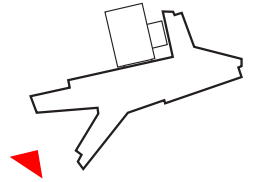


FACADE MATERIAL DIAGRAM

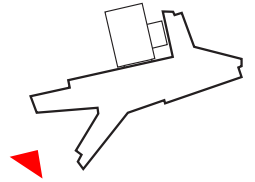


-  LIGHT WEIGHT / ECONOMICAL CLADDING
-  GLASSY / OPEN AND WELCOMING
-  HORIZONTAL / OPTIMIZED FOR DAYLIGHTING

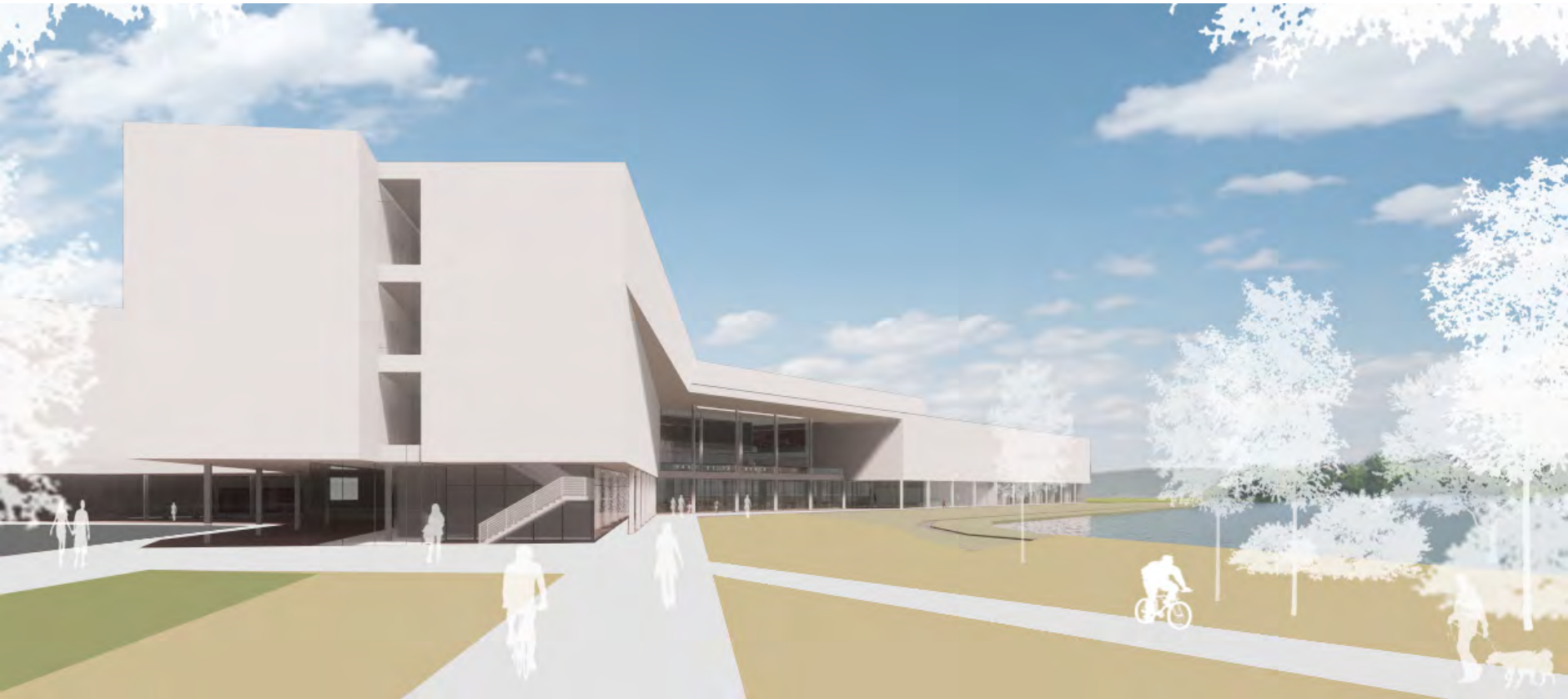
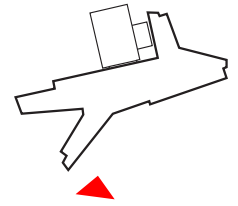
AERIAL LOOKING AT HIGH SCHOOL ENTRY



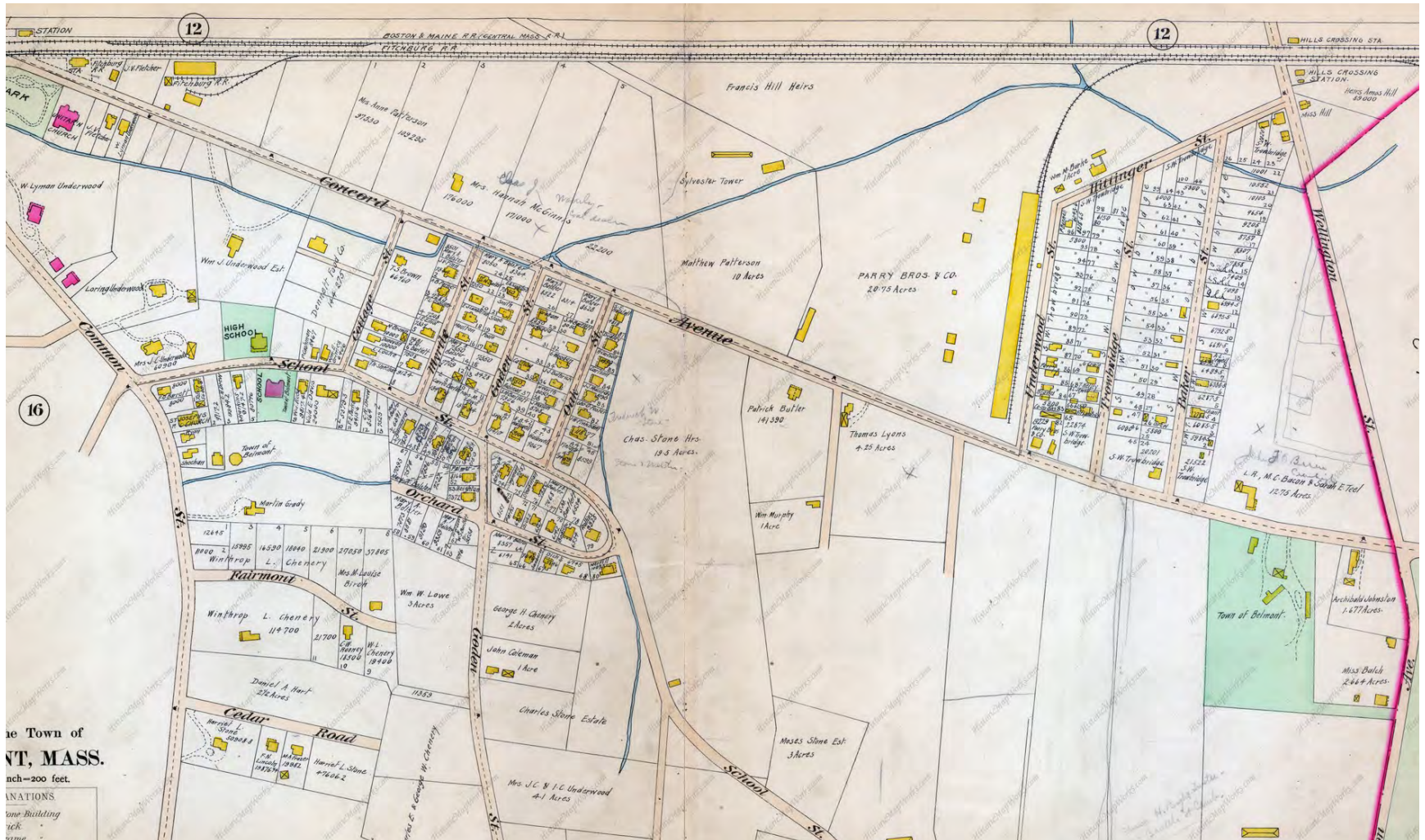
HIGH SCHOOL ENTRY FROM CONCORD AVE.



HIGH SCHOOL FROM POND



REGIONAL AND SITE SPECIFIC HISTORY



REGIONAL AND SITE SPECIFIC HISTORY



TOWN CENTER CONTEXT



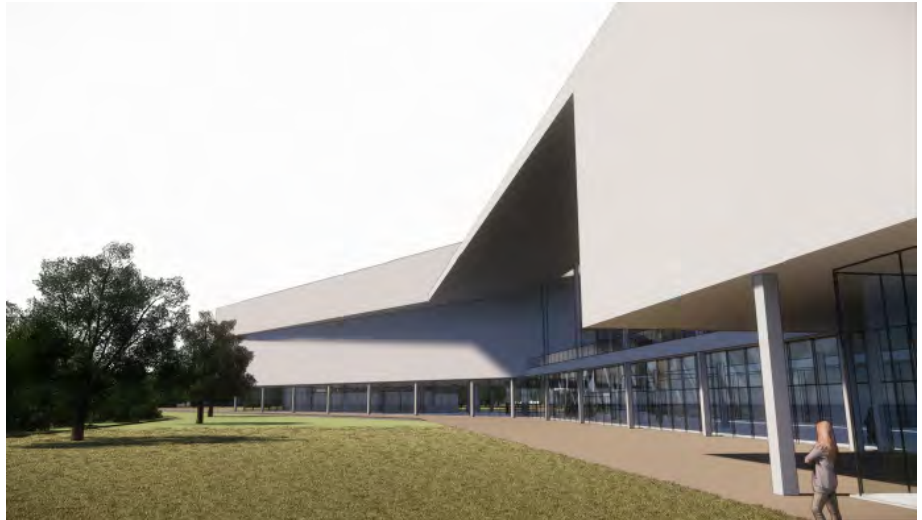
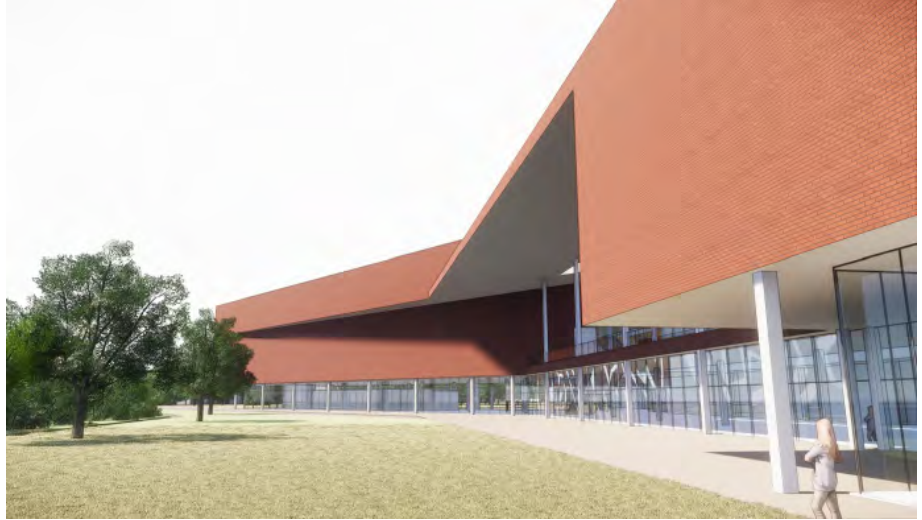
TOWN CENTER CONTEXT



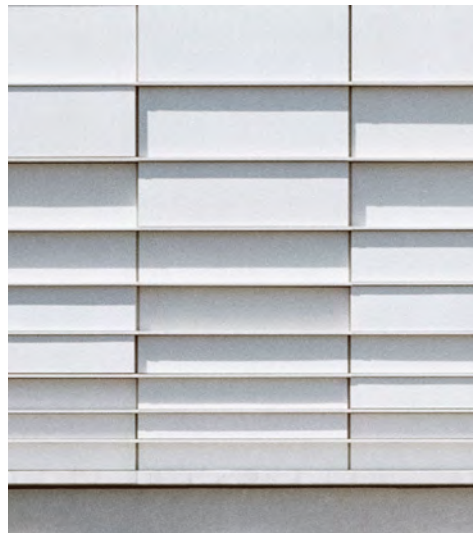
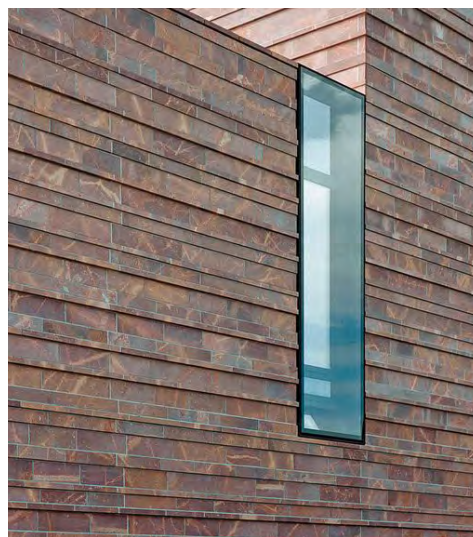
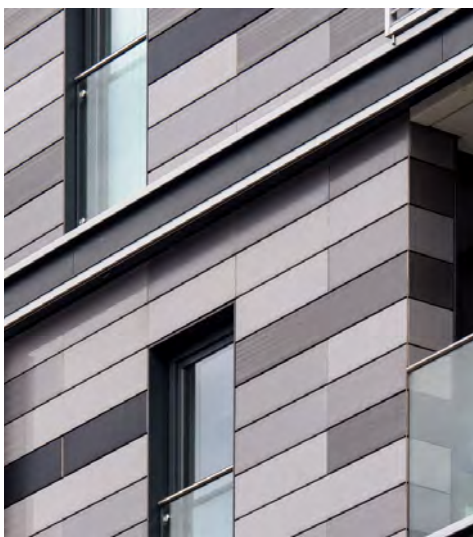
NEIGHBORHOOD CONTEXT



BUILDING TONE



FACADE ARTICULATION // PRECEDENTS_MATERIAL

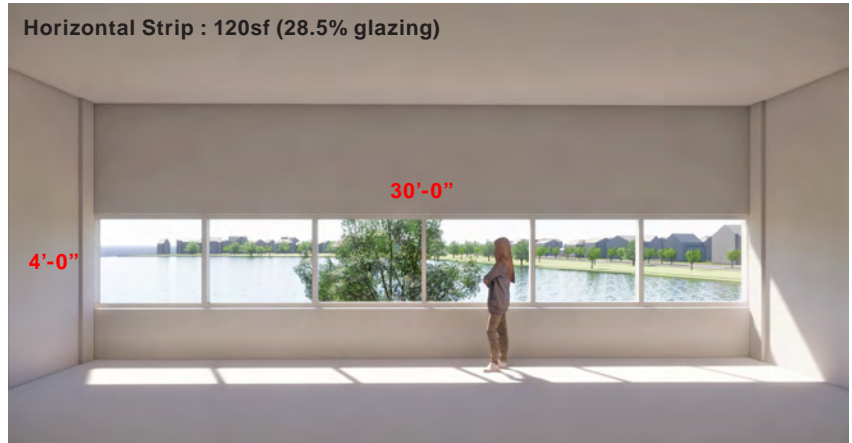


CLASSROOM WINDOWS

Vertical Windows : 96sf (22.8% glazing)



Horizontal Strip : 120sf (28.5% glazing)



Horizontal Strip / Light Shelf : 120sf (28.5% glazing)



Large Window : 96sf (22.8% glazing)



FACADE STUDIES



FACADE STUDIES



FACADE STUDIES



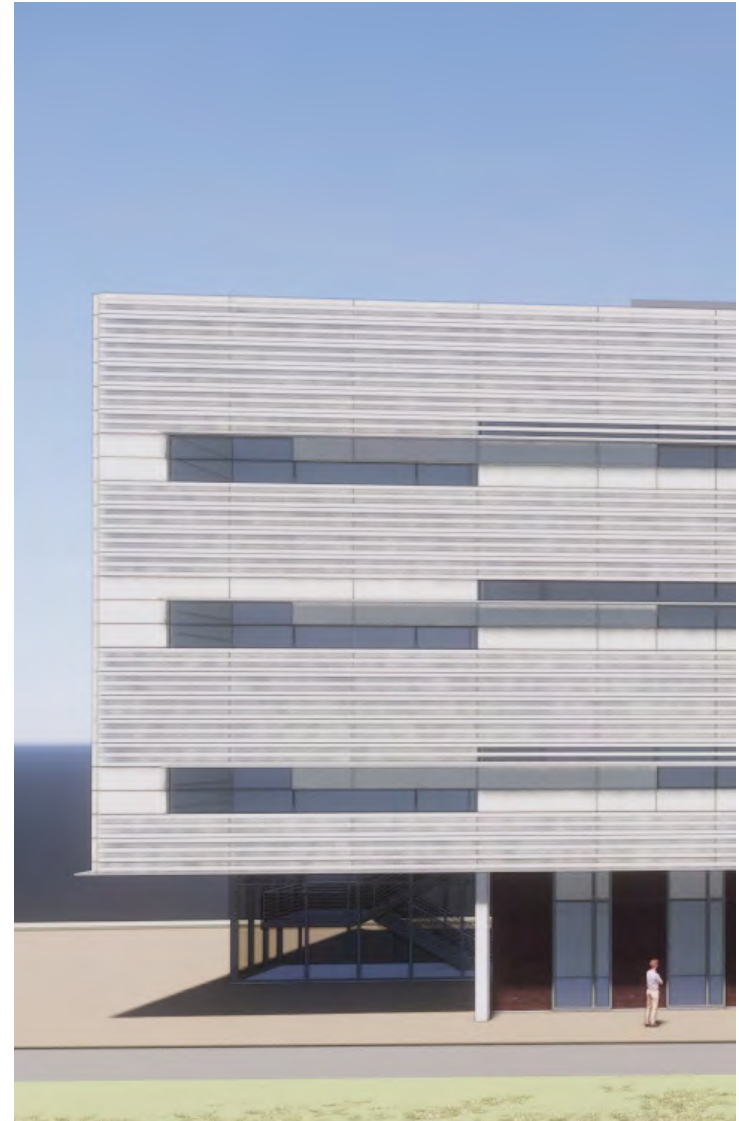
FACADE STUDIES



FACADE STUDIES



FACADE STUDIES



An aerial photograph of Belmont High School, a large, modern building with a flat roof and multiple wings. The school is surrounded by a dense forest of trees. In the foreground, there is a parking lot and a road with a crosswalk. The entire image is overlaid with a semi-transparent blue filter.

03/ VIRTUAL REALITY PRESENTATION

BELMONT HIGH SCHOOL

