

# Belmont Community Path Feasibility Study

Preliminary Meeting  
March 30, 2016

# Mass Central Rail Trail



# Up to Now

- Railroad tracks divide Town in half between north and south
- Former Mass Central Railroad right-of-way not intact
- How to connect Cambridge with Waltham
  - The Belmont Gap
- Several studies already done
- CPAC recommended potential path segments
  - Many different variations for the route

# Belmont Gap

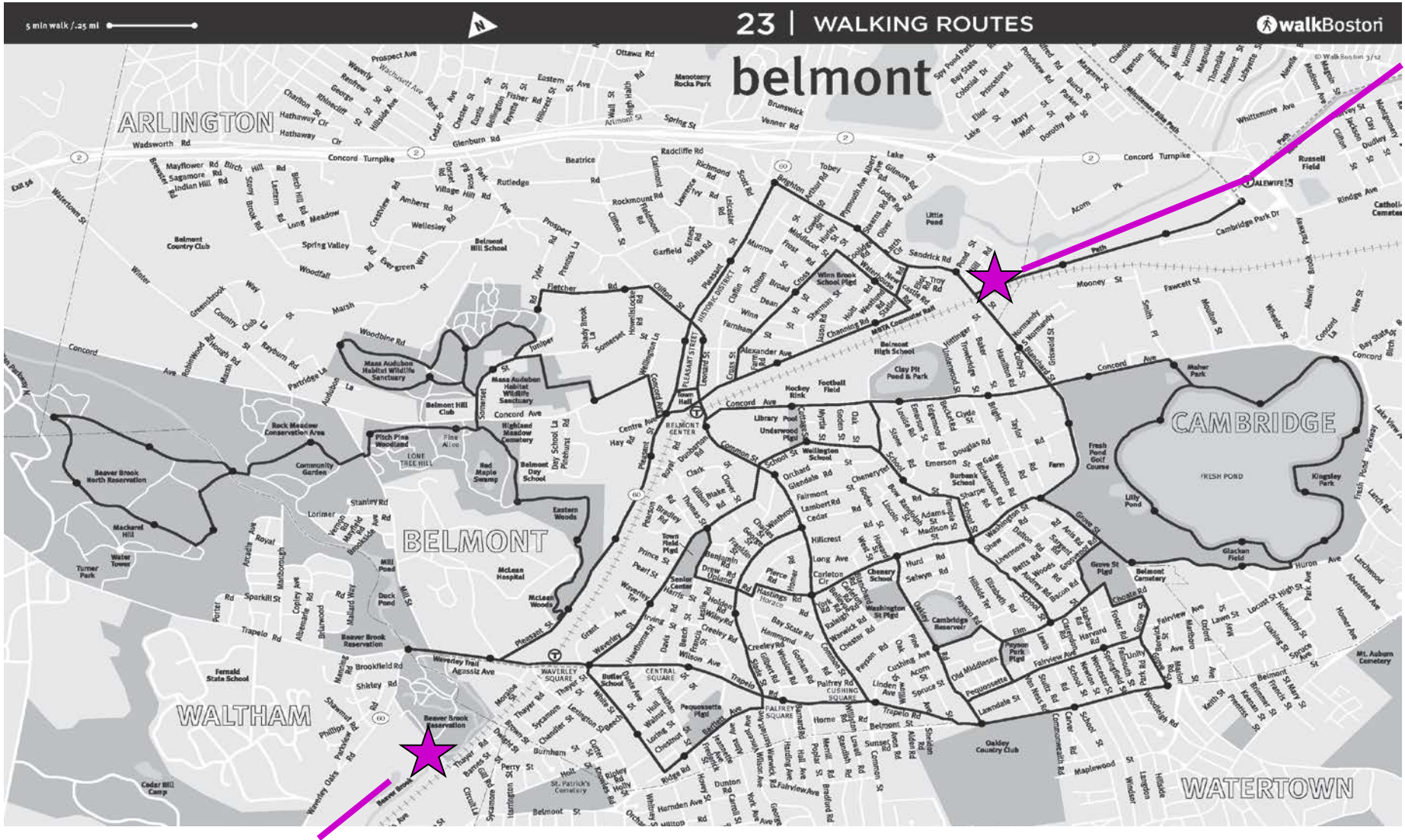
5 min walk / .25 mi



23 | WALKING ROUTES

walkBostoni

## belmont

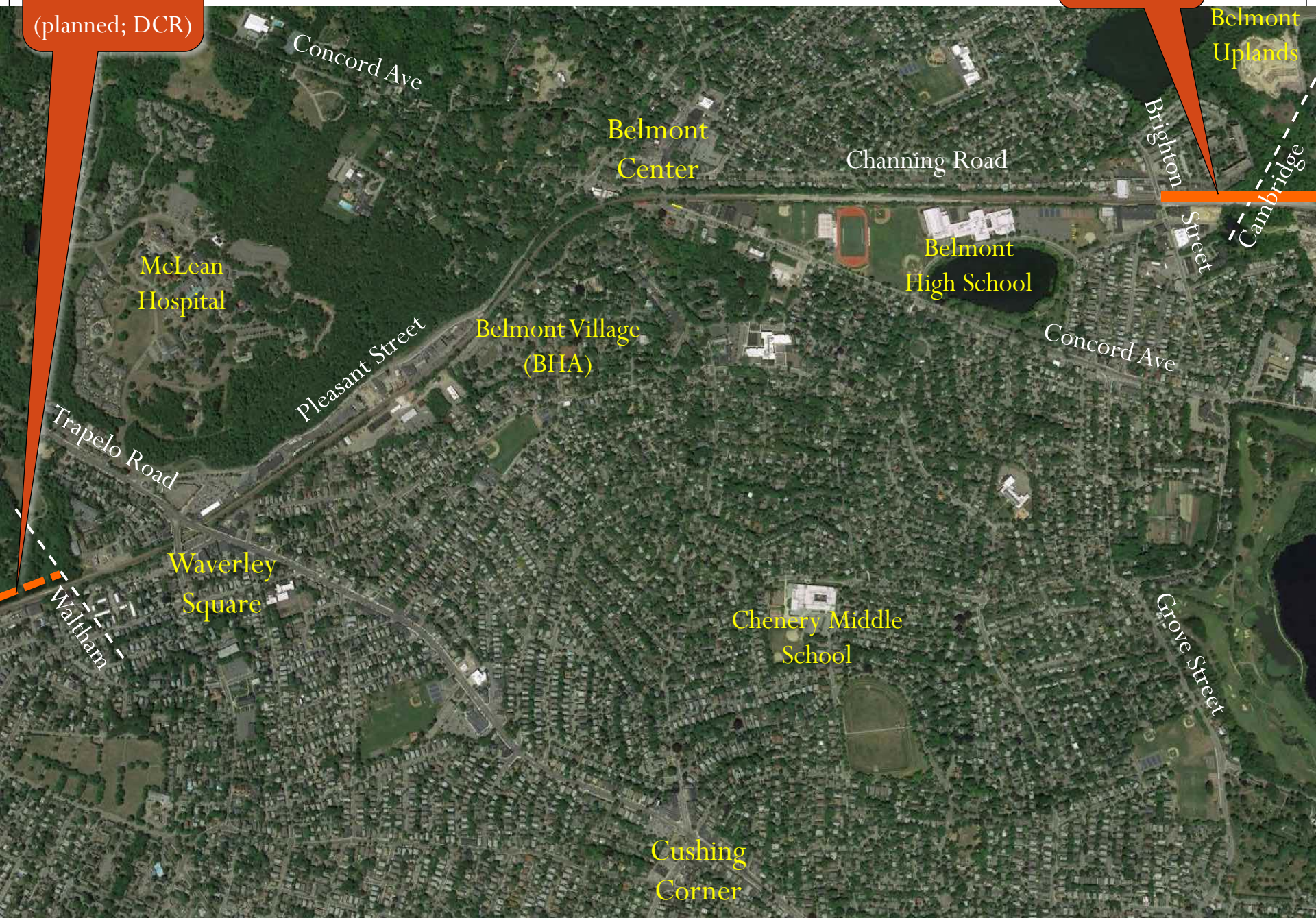




Mass Central  
Rail Trail  
(planned; DCR)

# Belmont Gap

Fitchburg  
Cutoff Path



Belmont  
Uplands

Concord Ave

Belmont  
Center

Channing Road

Brighton  
Street

Cambridge

McLean  
Hospital

Belmont  
High School

Pleasant Street

Belmont Village  
(BHA)

Concord Ave

Trapelo Road

Waverley  
Square

Chenery Middle  
School

Waltham

Grove Street

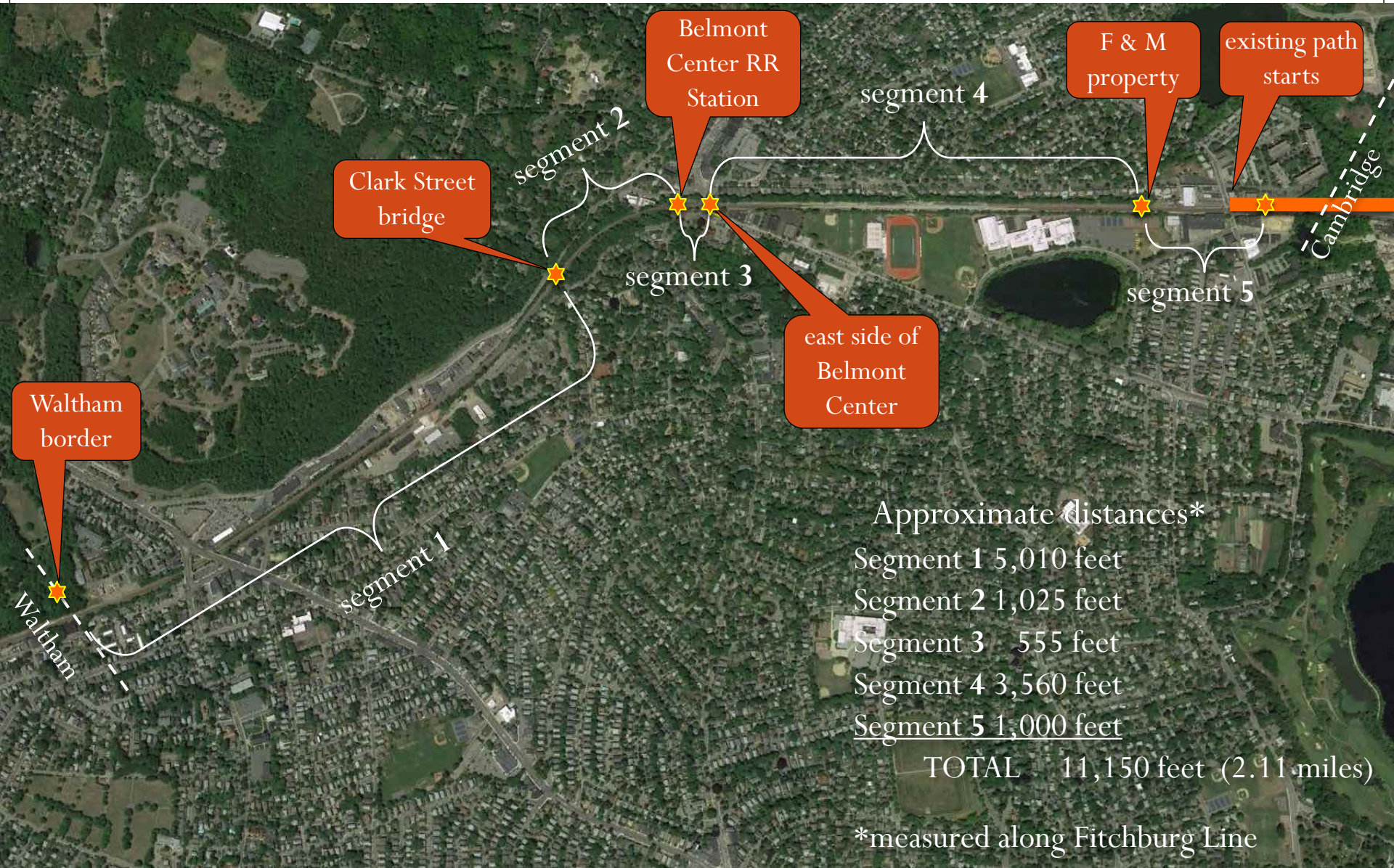
Cushing  
Corner



# Potential Route Divided into 5 Segments

- Segment 1: Waltham Border to Clark Street Bridge
- Segment 2: Clark Street Bridge to Belmont Center
- Segment 3: Across Belmont Center
- Segment 4: Belmont Center to East Belmont
- Segment 5: East Belmont to Fitchburg Cutoff Path

# Potential Route Divided into 5 Segments



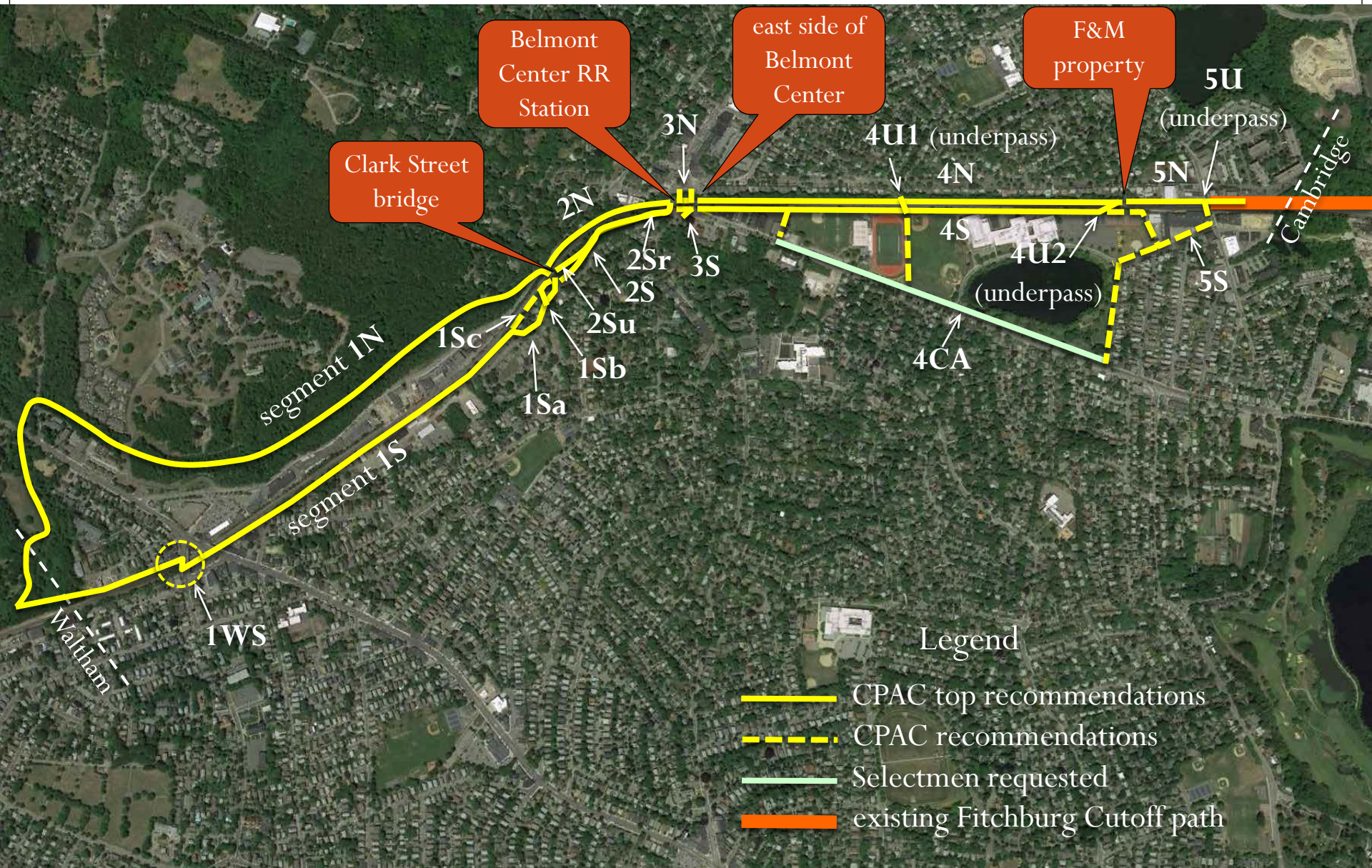
## Approximate distances\*

Segment 1	5,010 feet
Segment 2	1,025 feet
Segment 3	555 feet
Segment 4	3,560 feet
Segment 5	1,000 feet
<b>TOTAL</b>	<b>11,150 feet (2.11 miles)</b>

\*measured along Fitchburg Line



# Potential Path Segments

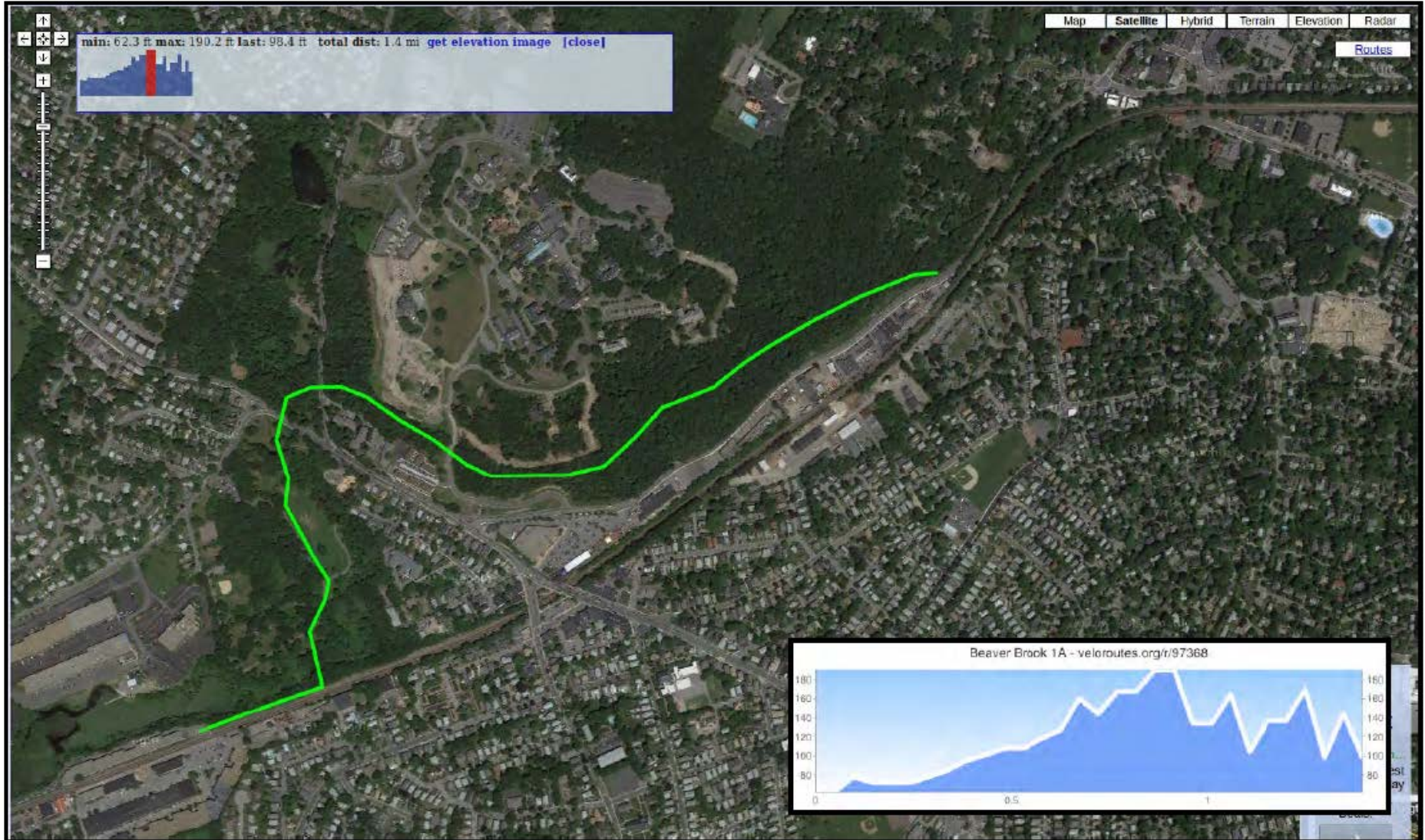




# Moving Forward to Feasibility Study

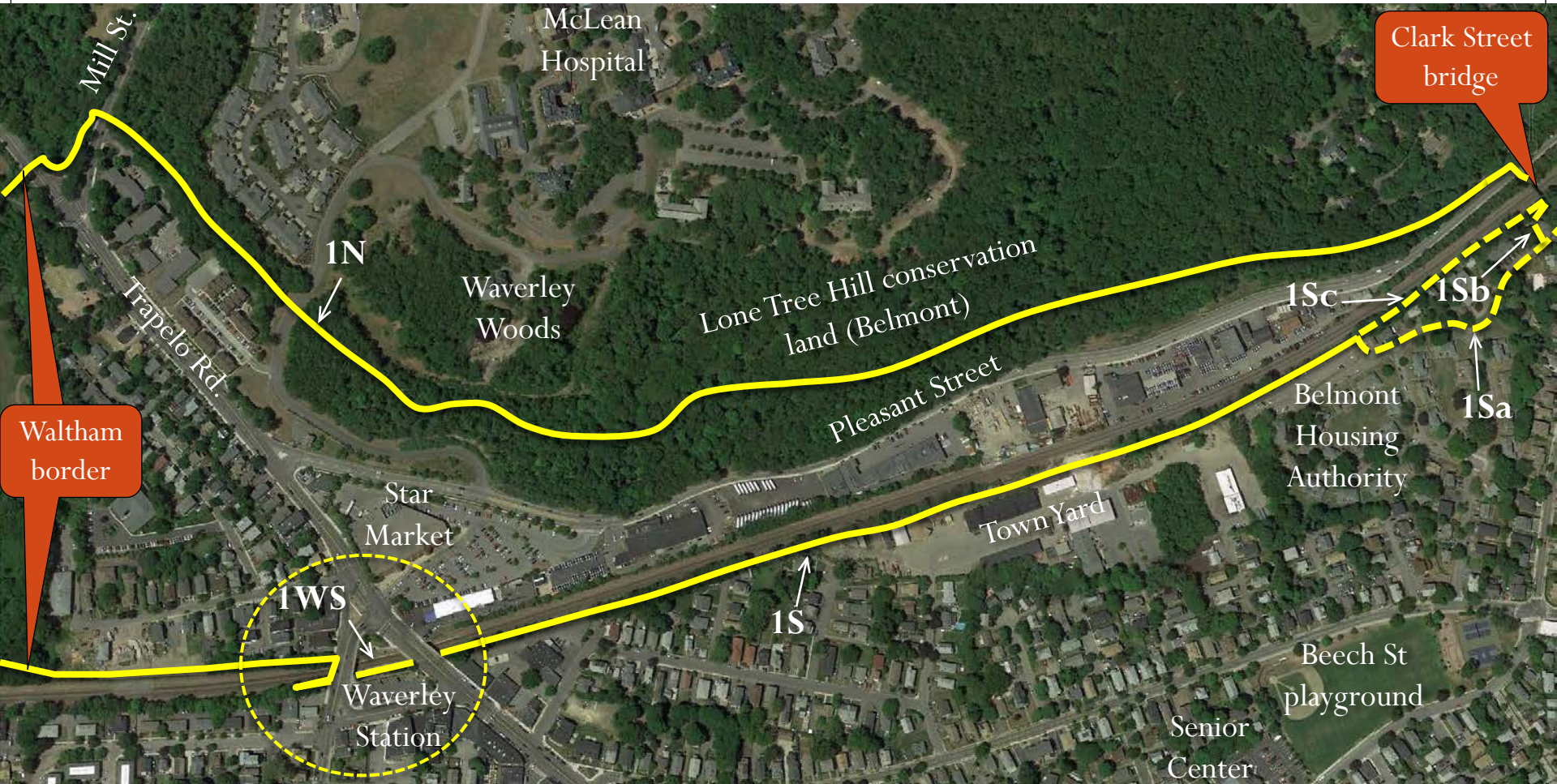
- Many challenges with potential segments
  - Connections, width, topography, etc.
- Looking for design solutions, engineering assessments, and cost estimates
  - What works? Does not work?
- Desired Outcome of Feasibility Study
  - Make an informed decision on the route configuration and design features, and
  - Move to 25% path design once the BOS approve a final route

# Segment 1: Waltham Border to Clark Street Bridge





# Segment 1: Waltham Border to Clark Street Bridge



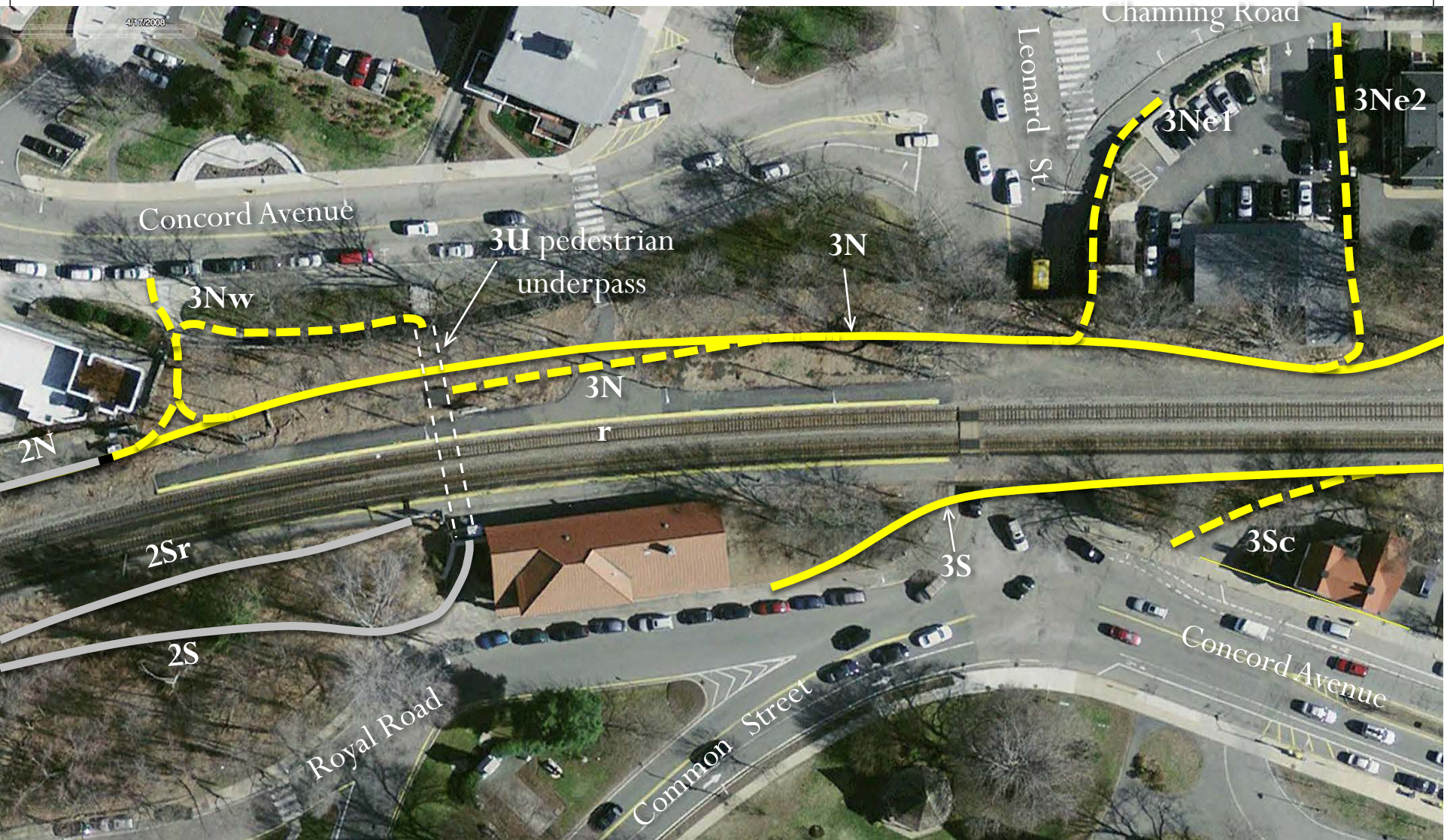


# Segment 2: Clark Street Bridge to Belmont Center



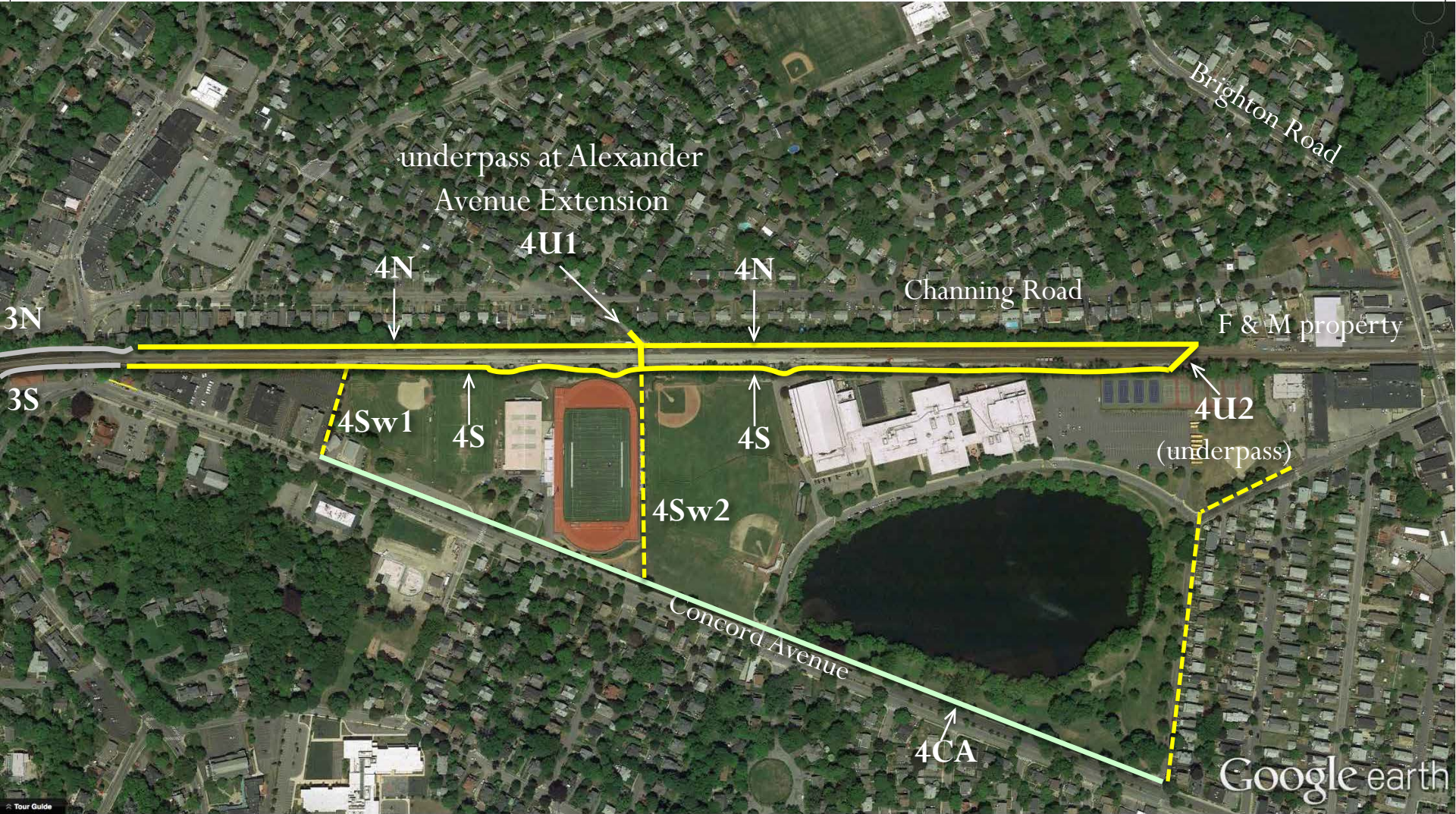


# Segment 3: Belmont Center



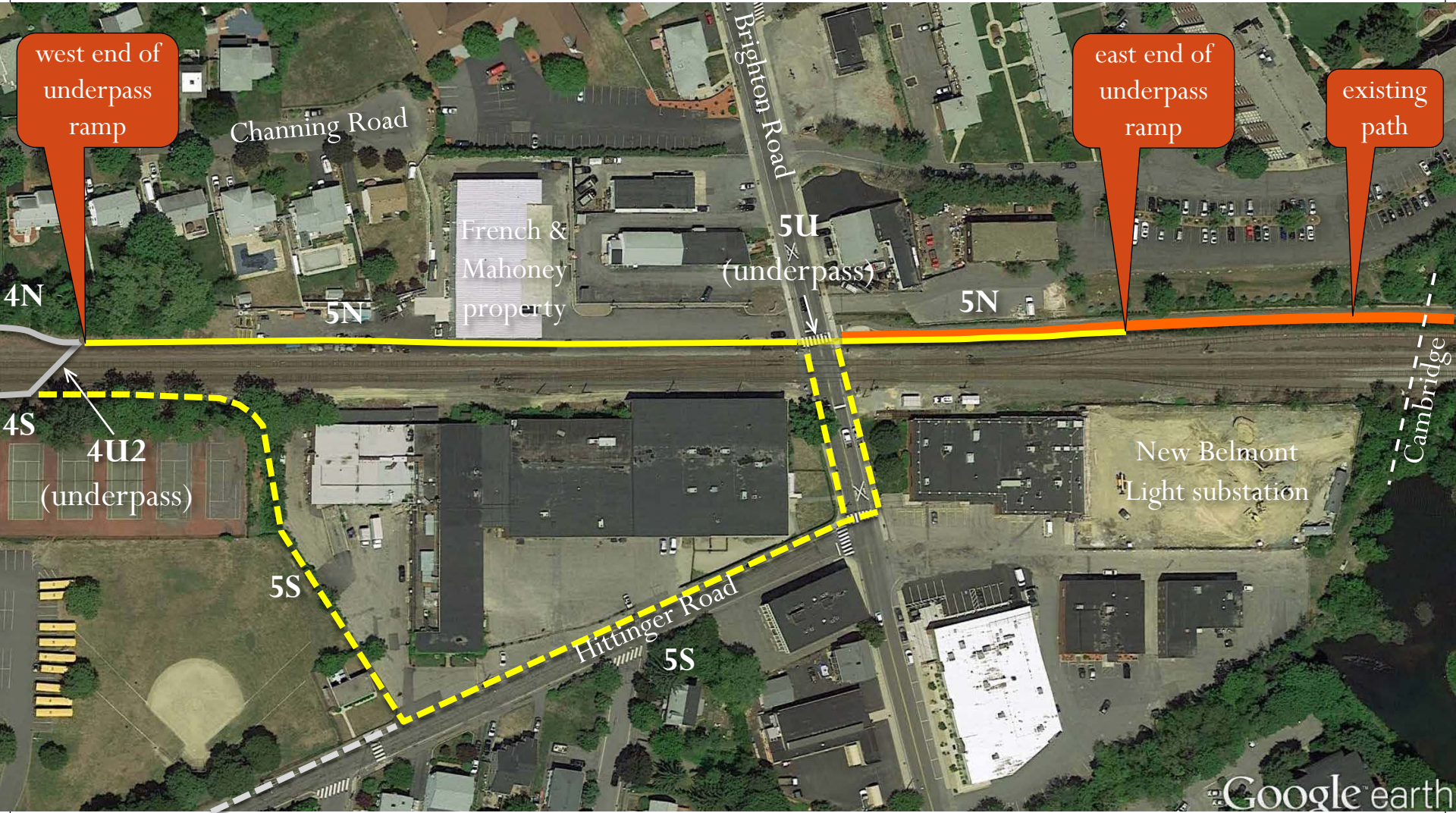


# Segment 4: Belmont Center to East Belmont





# Segment 5: East Belmont to Fitchburg Cutoff Path



Google earth



# Fitchburg Cutoff Path





# Significant Dates

- April 1, 2016 – Written questions due
- April 22, 2016 – Proposals due
- April 22 – 29, 2016 – Proposals reviewed
- May 9-10, 2016 – 1<sup>st</sup> interviews
- May 13, 2016 – 2<sup>nd</sup> interviews
- May 27, 2016 – Contract signed