

# EASTERN END ALIGNMENTS — KEY PLAN



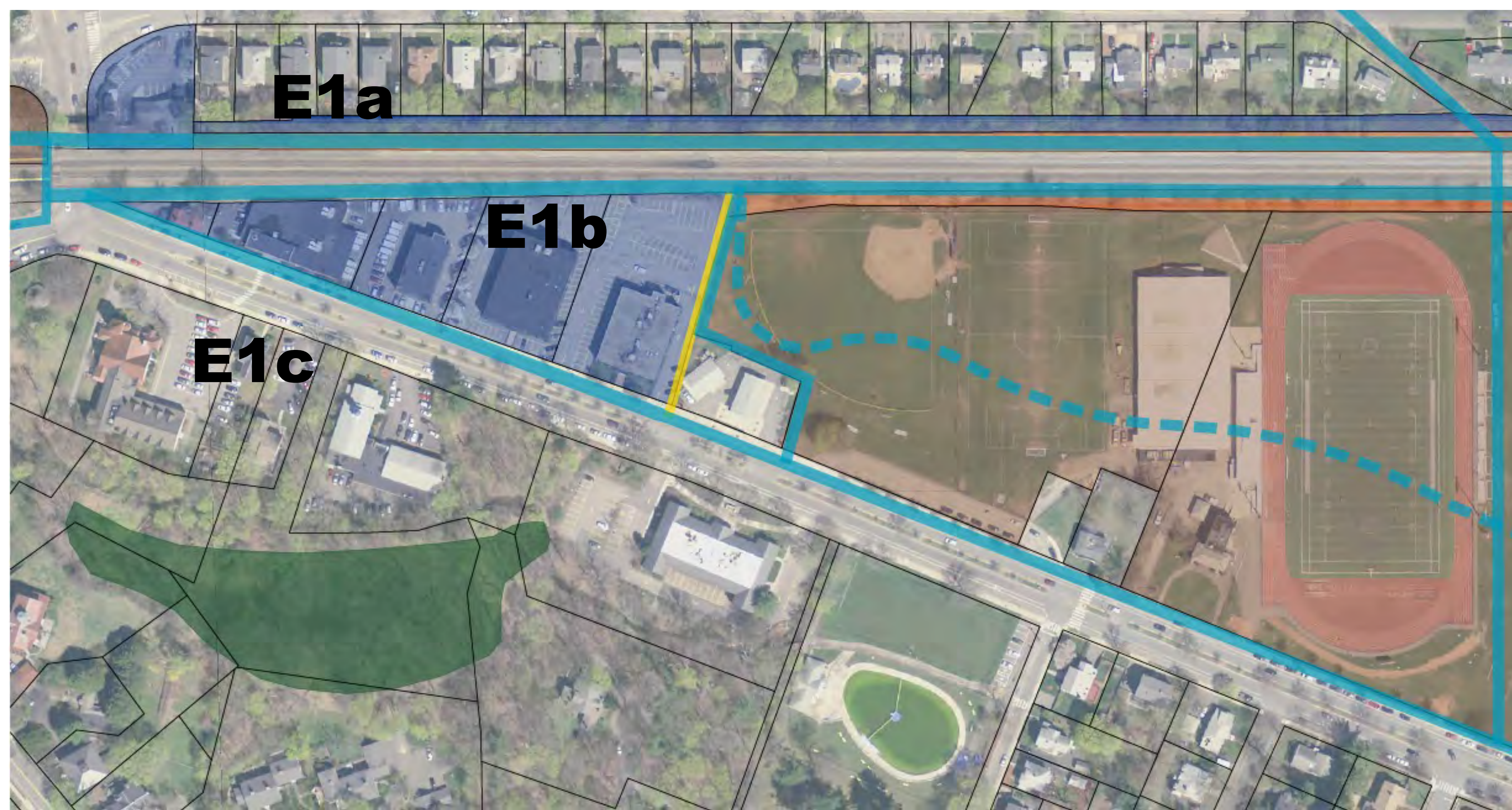
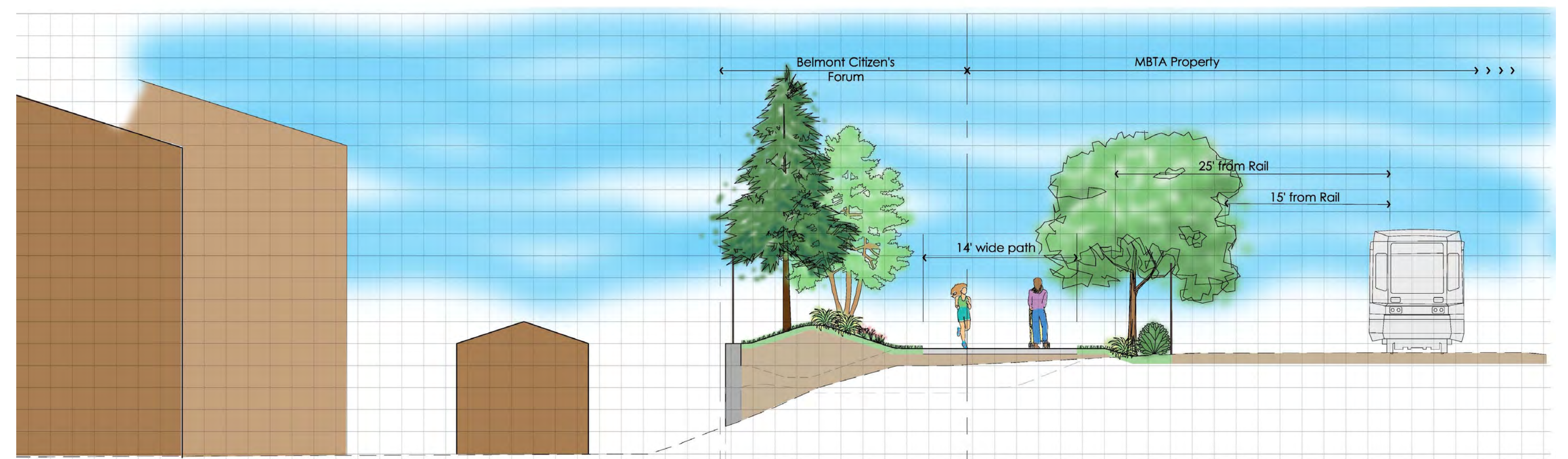
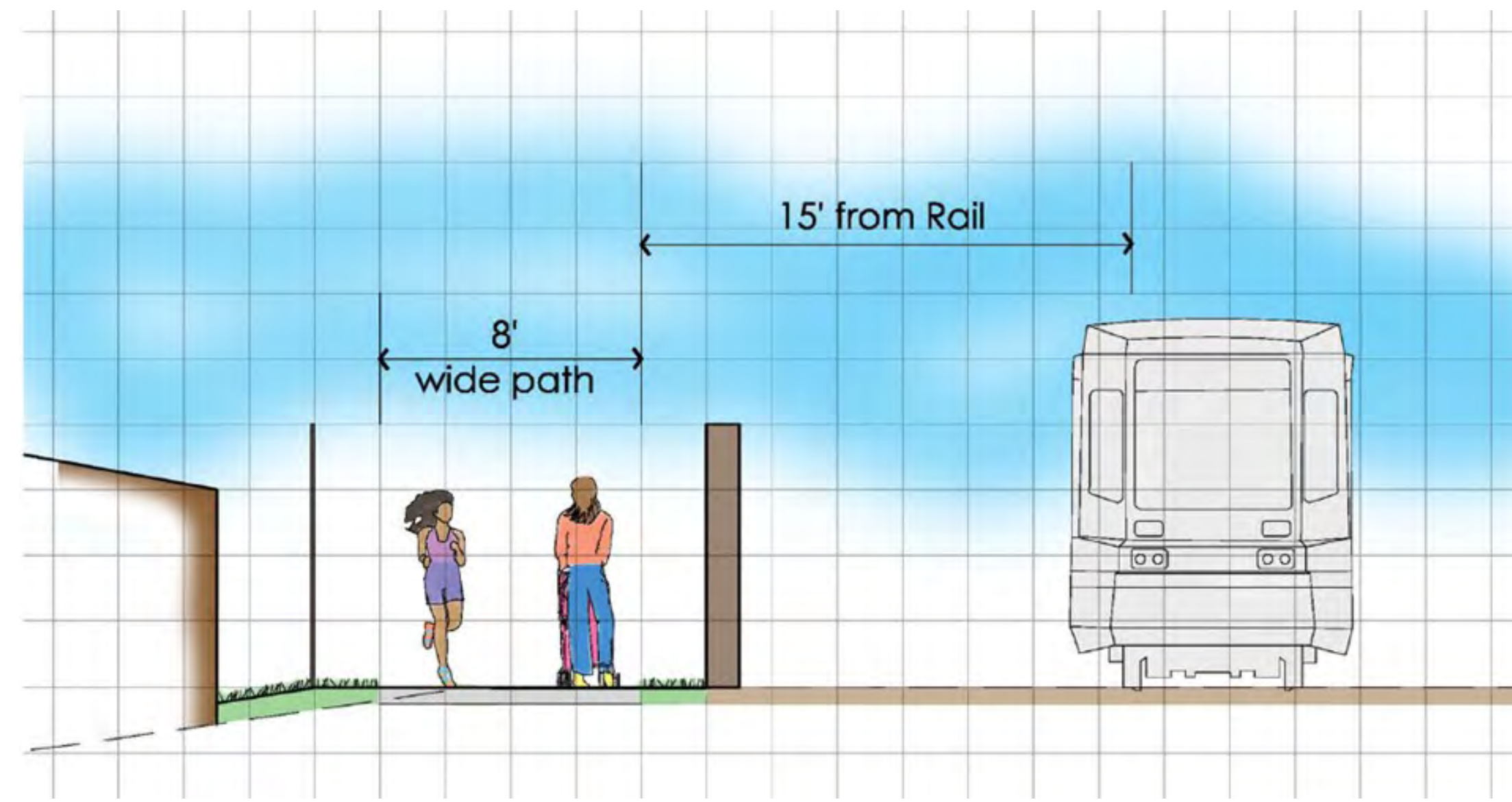


# DOWNTOWN TO ALEXANDER AVENUE (E1)

Continue along north side of rail (E1a):

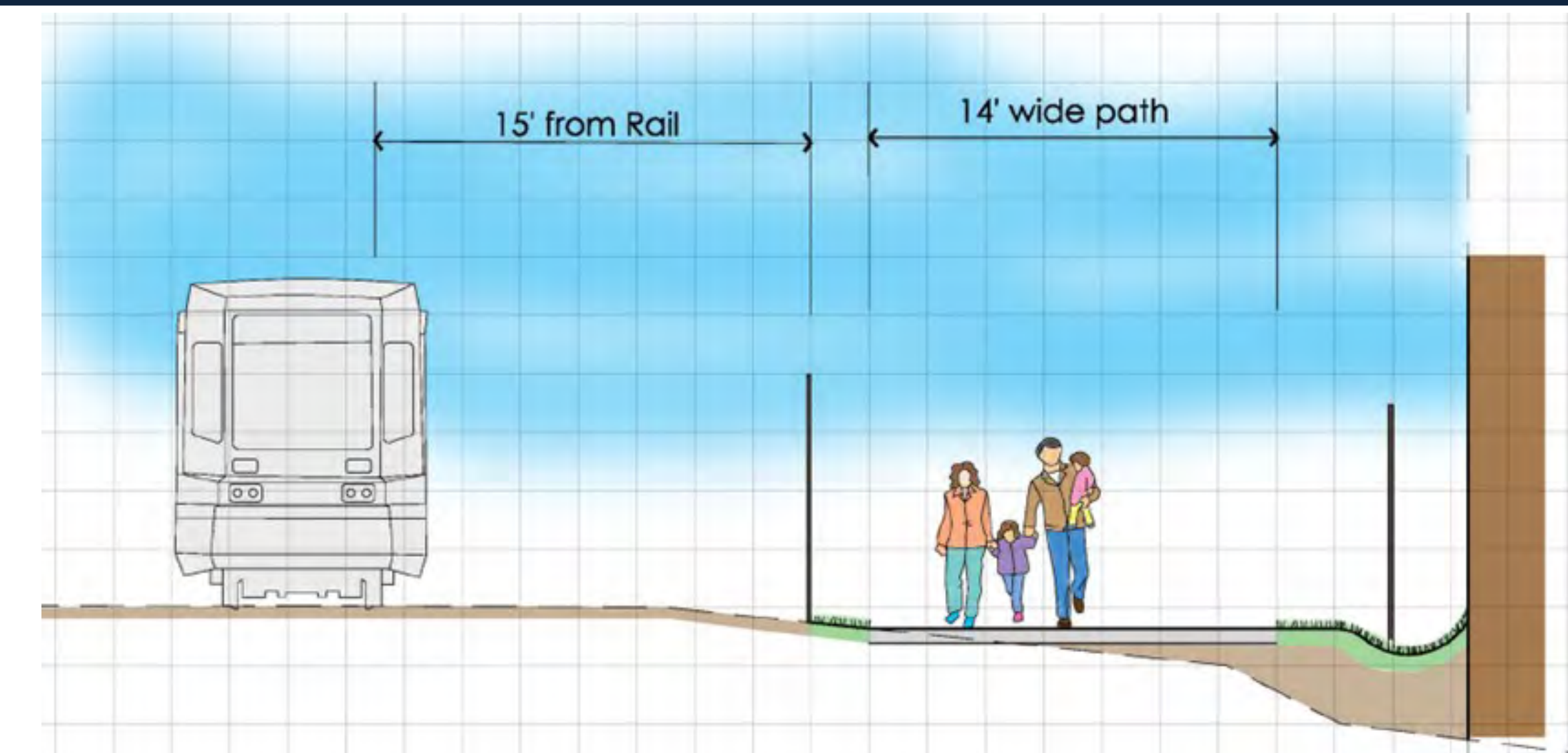
Minimum offset plus minimum path width past Coldwell Banker building — 25'

Room for edge treatments on both sides along MBTA/BCF

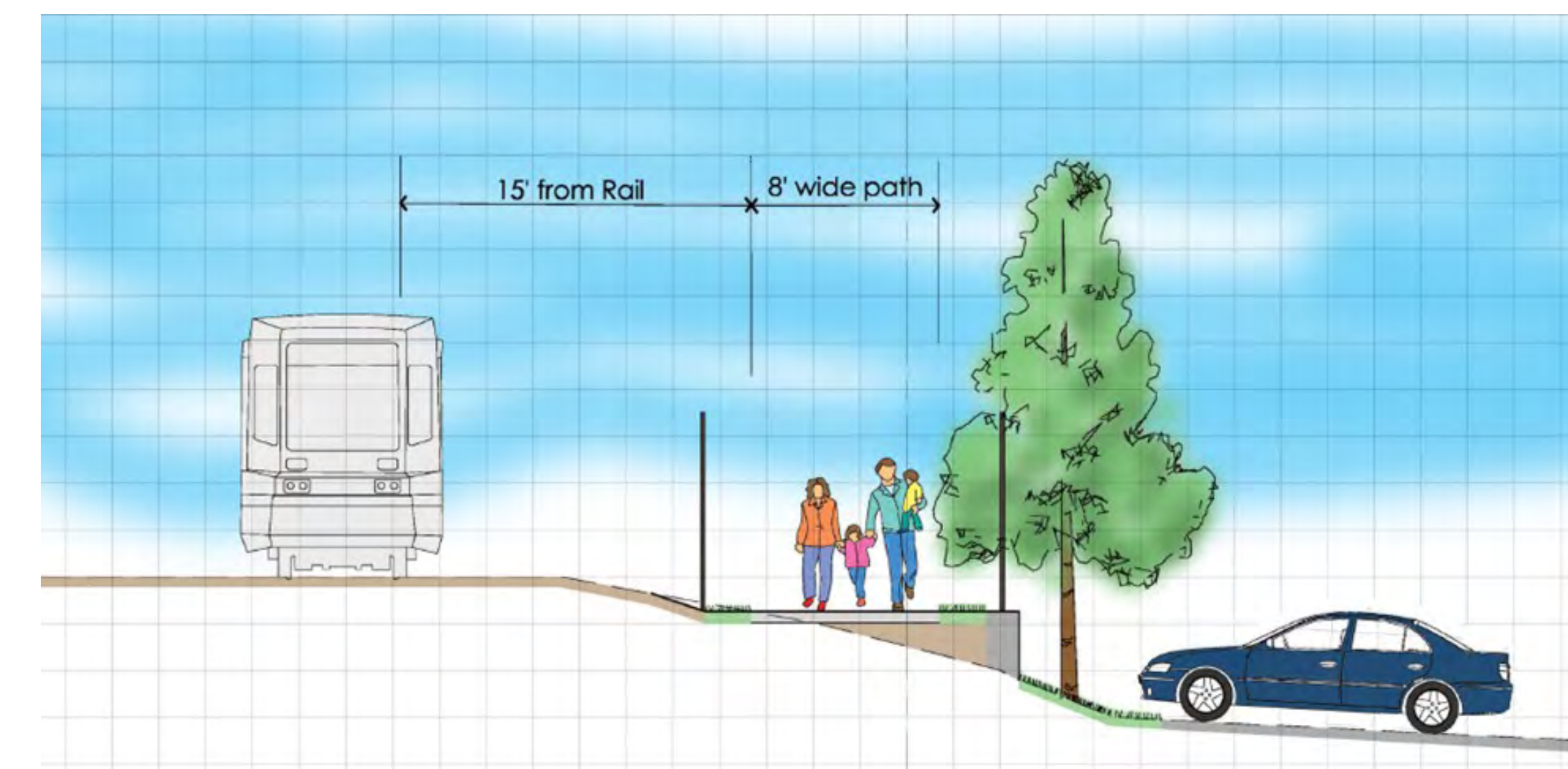


Continue along south side of rail (E1b):

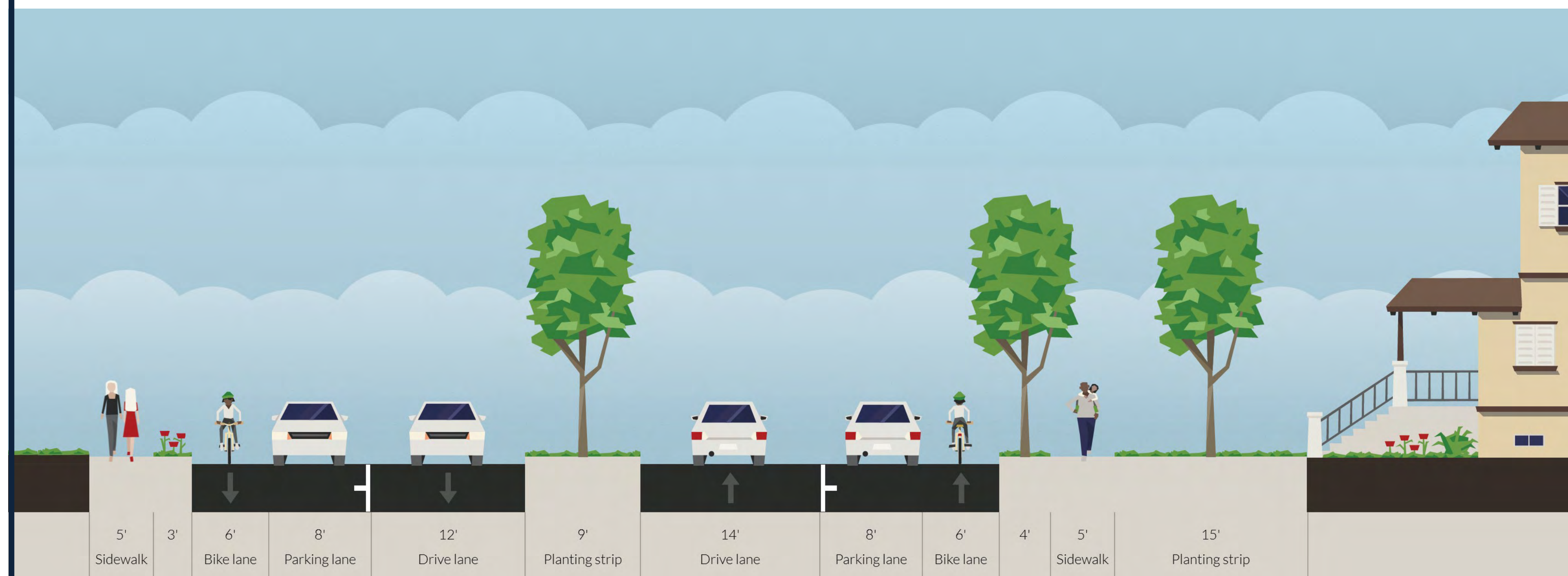
Minimum offset to rail plus recommended path width past post office.



Minimum offset to rail plus minimum path width east of post office to avoid parking impacts



Cross and continue along Concord Avenue (E1c):

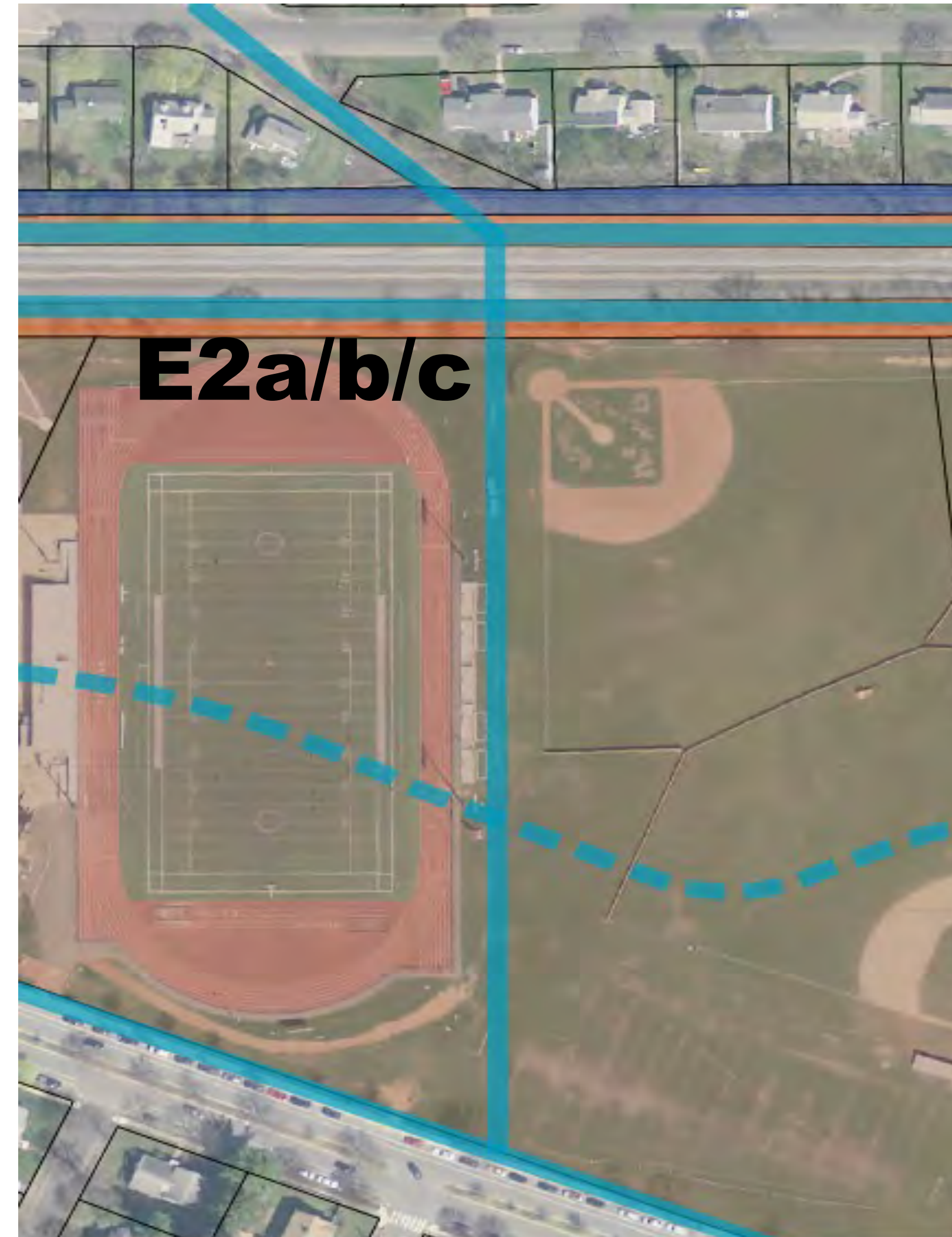




# ALEXANDER AVENUE UNDERPASS (E2)

## Depress Path and Alexander Avenue (E2a):

Works for path running along north side of rail only.  
Requires more extensive walls to provide openness.



## Straight Underpass (E2c):

Works with alignment along south side of rail or connection from Concord Avenue.

Alexander Avenue would depress to underpass similar to Yerxa Road underpass.



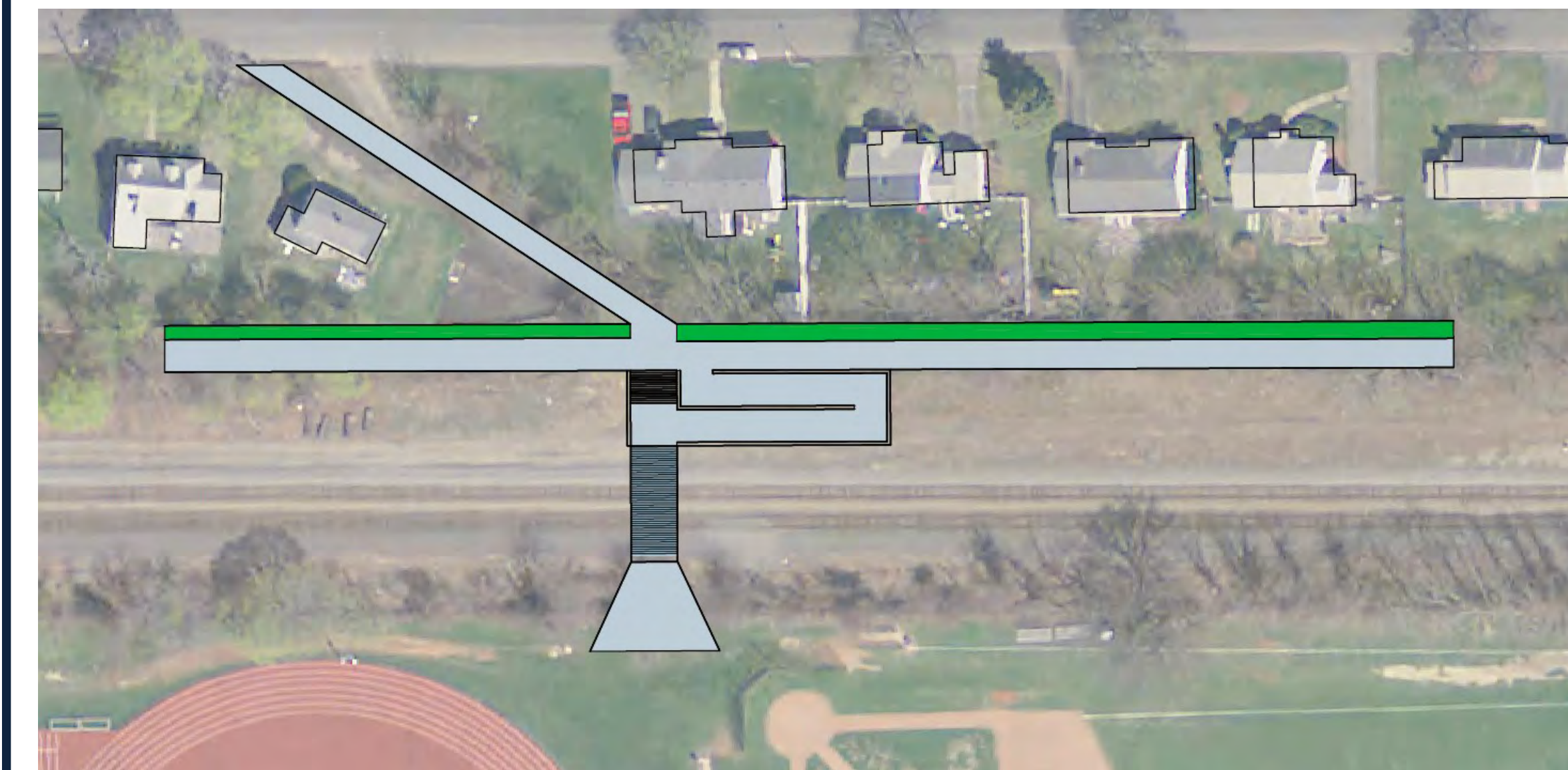
## Switchback (E2b):

Allows path running on north side to bypass the underpass.

Works with path on either side of rail or along Concord Avenue.

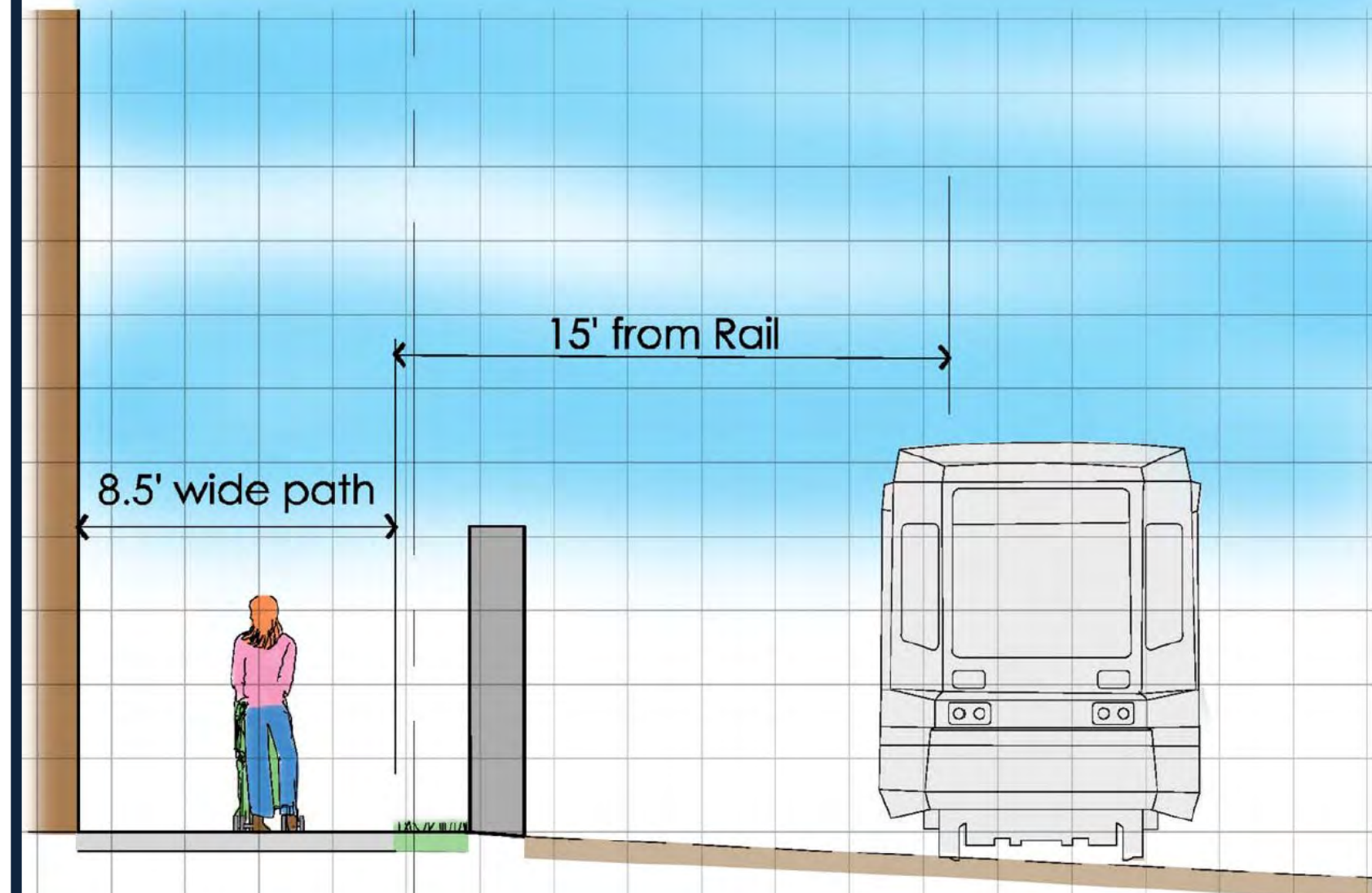
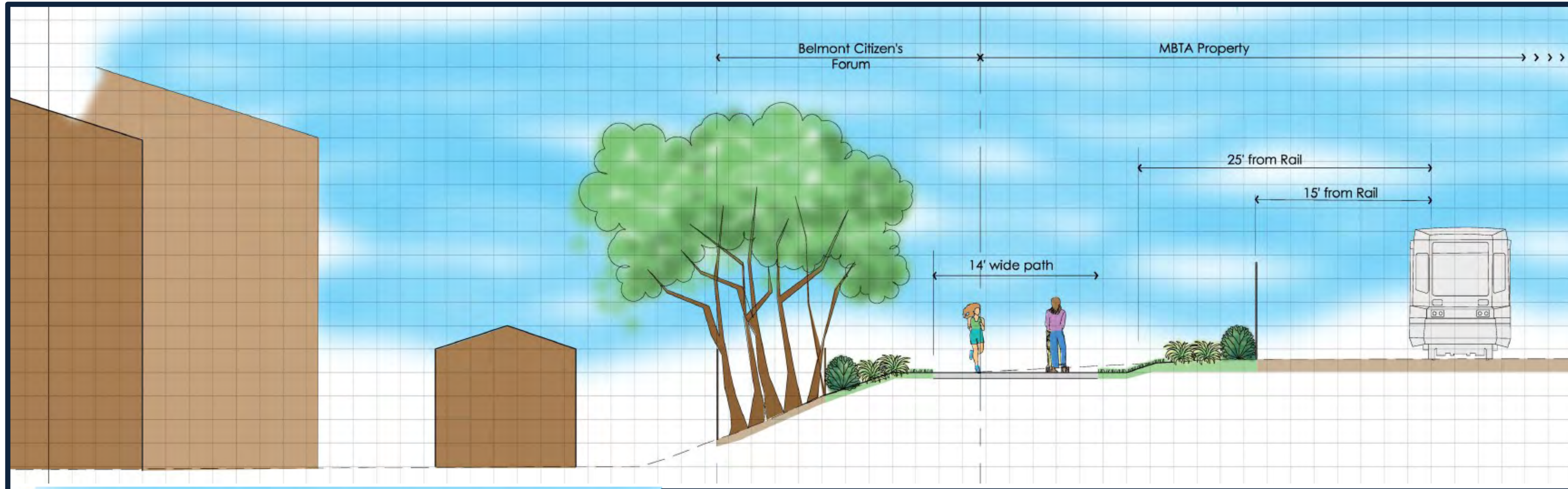
Requires less walls and is less costly.

Has a somewhat "boxed in" feel.





# ALEXANDER AVENUE TO BRIGHTON STREET (E3)



Continue along north side of rail (E3a):

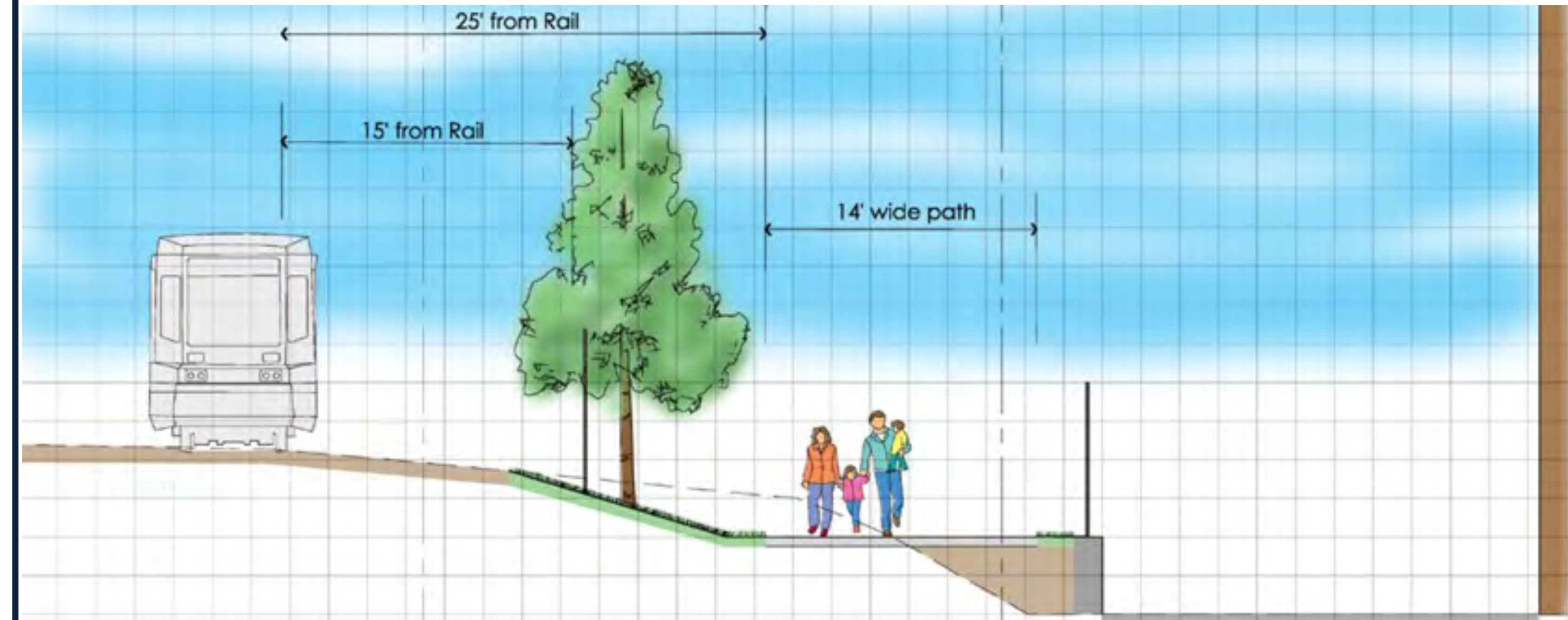
Possible cross section shown along BCF land.

Pinches at F&M building.

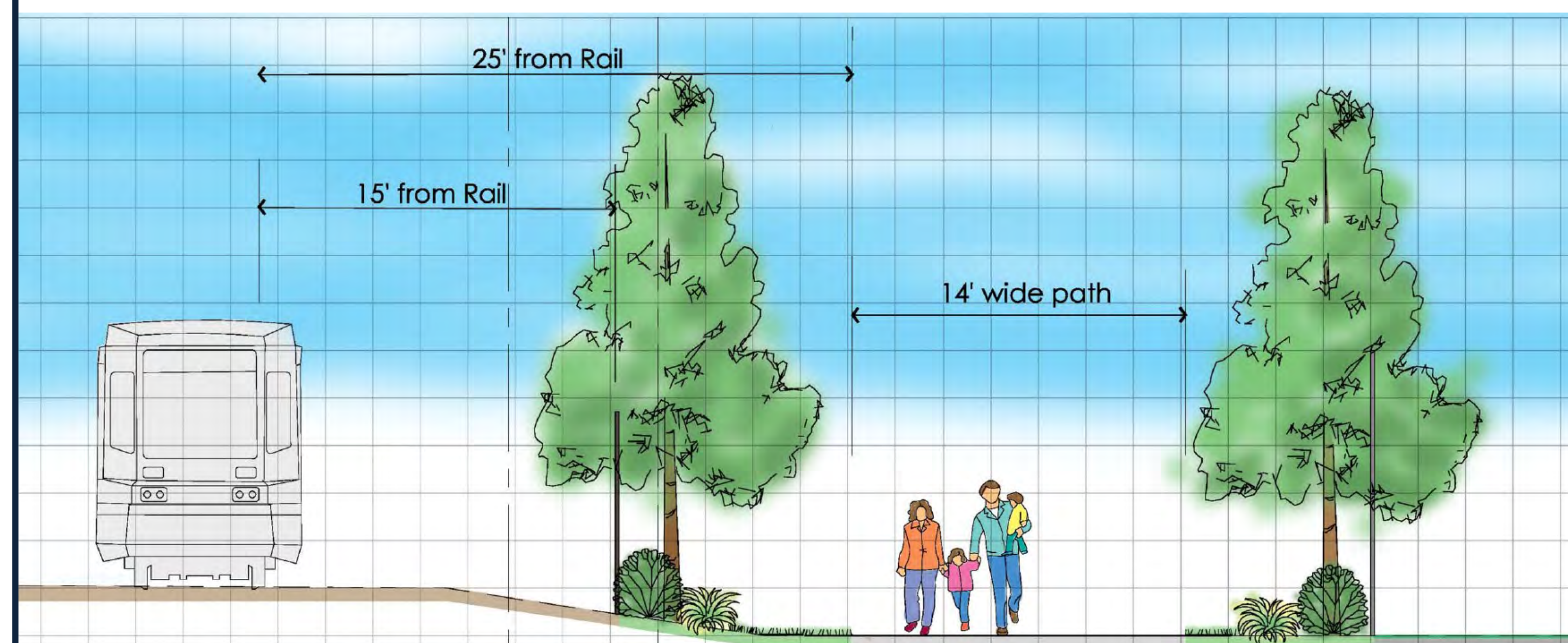


Continue along south side of rail (E3b):

Maintain drive aisle behind high school.



Run along north side of existing tennis courts.

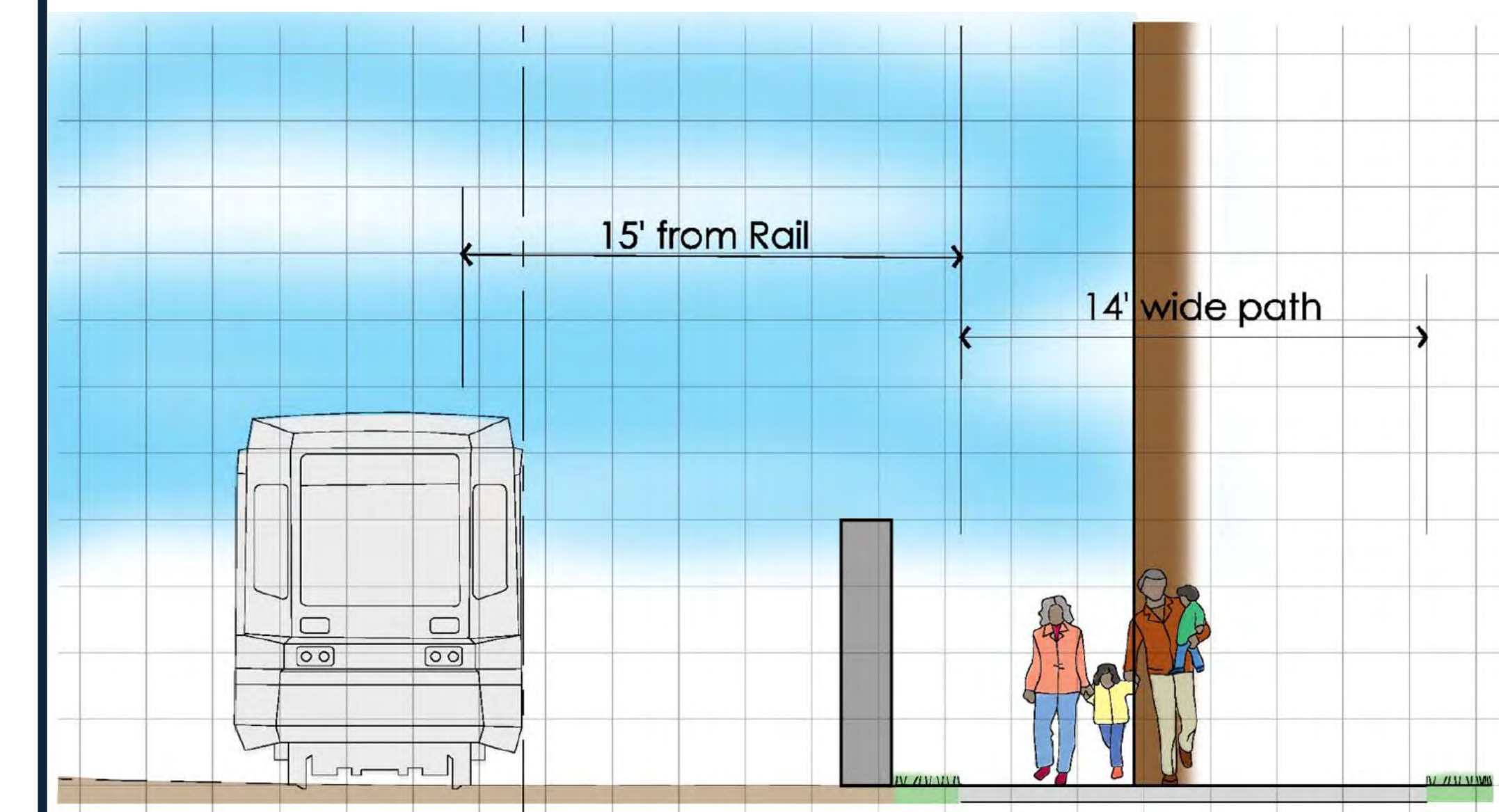


Traverse new high school campus (E3c):

MSBA approved for reconstruction.

Coordination with campus design team needed.

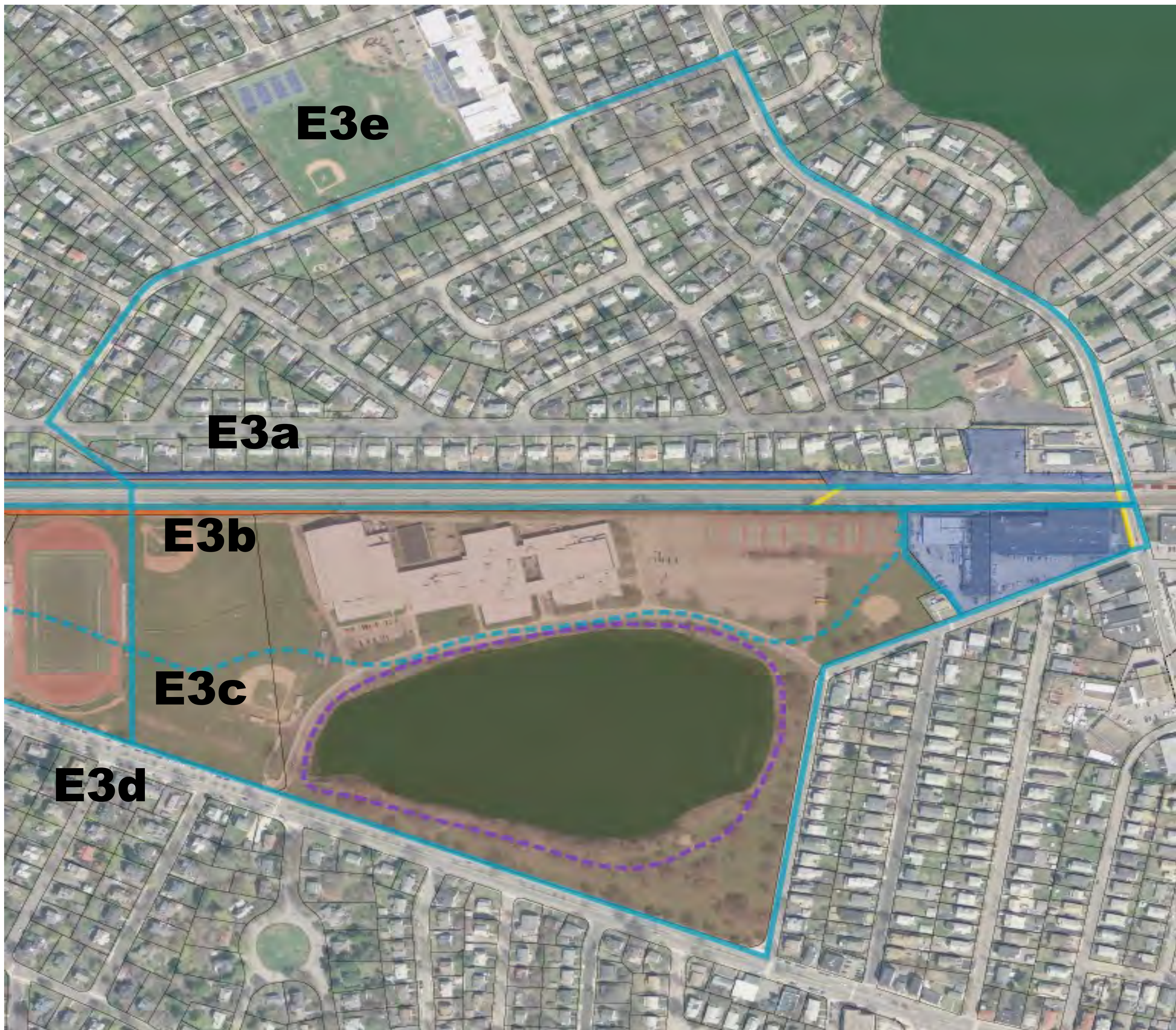
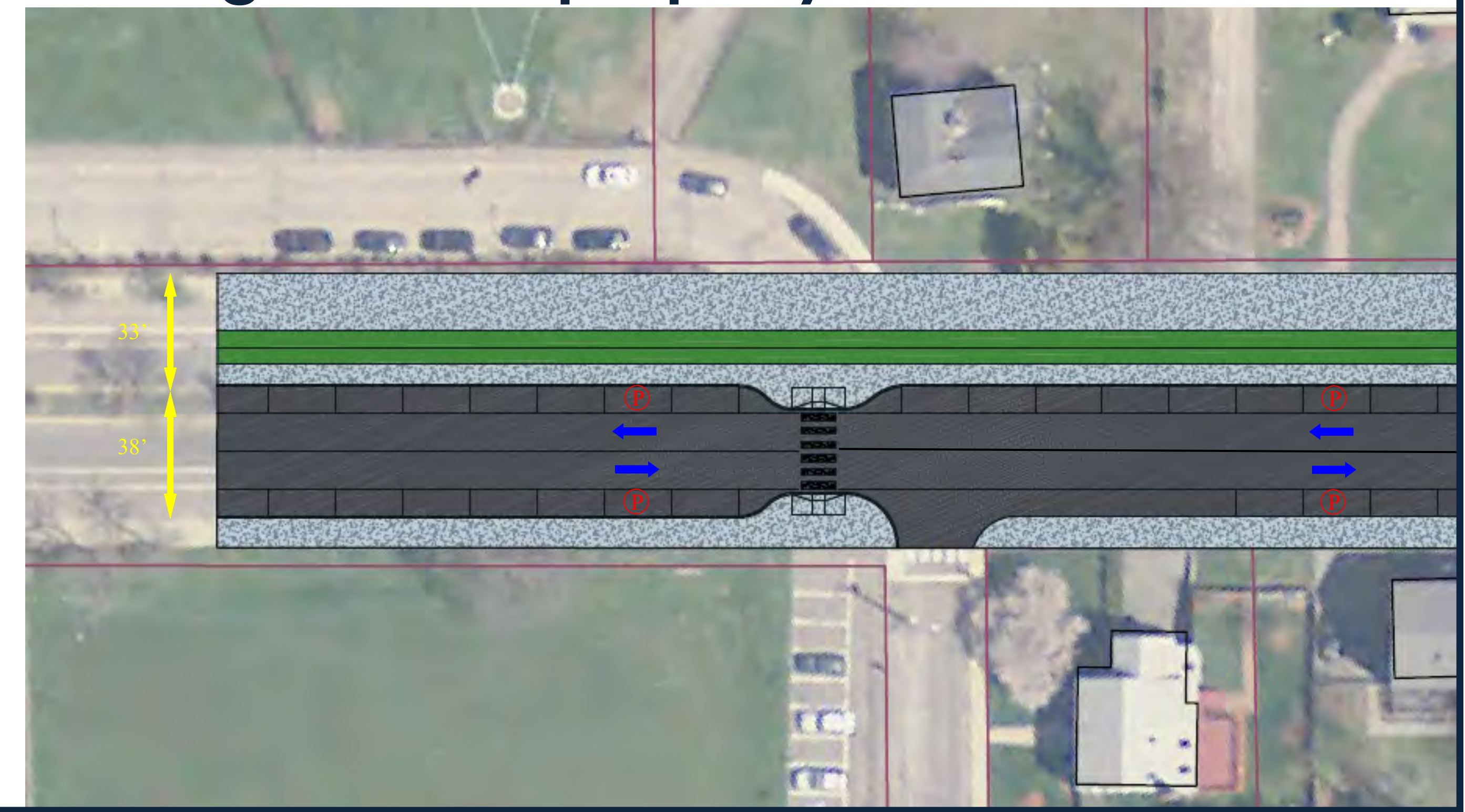
Pinch to minimum offset at Crate Escape building. Has structural impact.





# ALEXANDER AVENUE TO BRIGHTON STREET (E3)

**Concord Avenue Linear Park (E3d):** Condensing paved area to that needed for vehicular lanes and on-street parking allows for 33' minimum width park on north side of Concord Avenue adjacent to high school property.



**Traverse Winn Brook Neighborhood (E3e):** Makes connection to Winn Brook Elementary School and avoids pinch point west of Brighton.

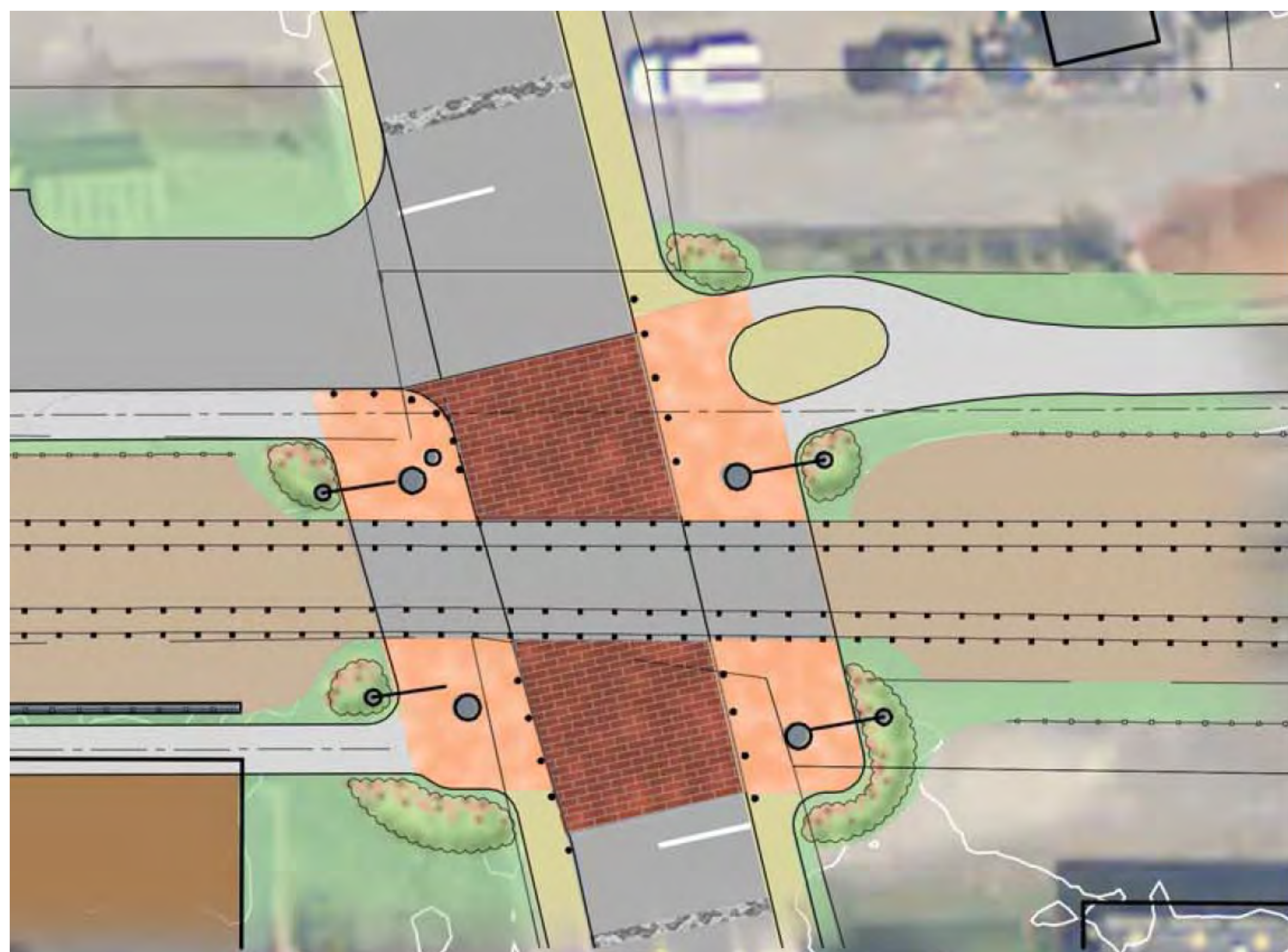




# BRIGHTON STREET (E4)



Cross Brighton Street (E4b): Elevate to 16' west of French and Mahoney building.



Cross Brighton Street At Grade (E4a): Use highly visible pave treatment and wide sidewalks.



Cross Brighton Street and Rail (E4c): Elevate to 24' west of Brighton Street and cross road/rail diagonally. Impacts building southwest of road/rail intersection.