

BELMONT DAY SCHOOL BARN

PROJECT
BELMONT DAY SCHOOL

55 DAY SCHOOL LN
BELMONT, MA 02478

OWNER

utile
ARCHITECTURE + URBAN DESIGN

115 KINGSTON ST
BOSTON, MA 02110
P 617 423.7200 F 617 423.1414
utildesign.com ARCHITECT

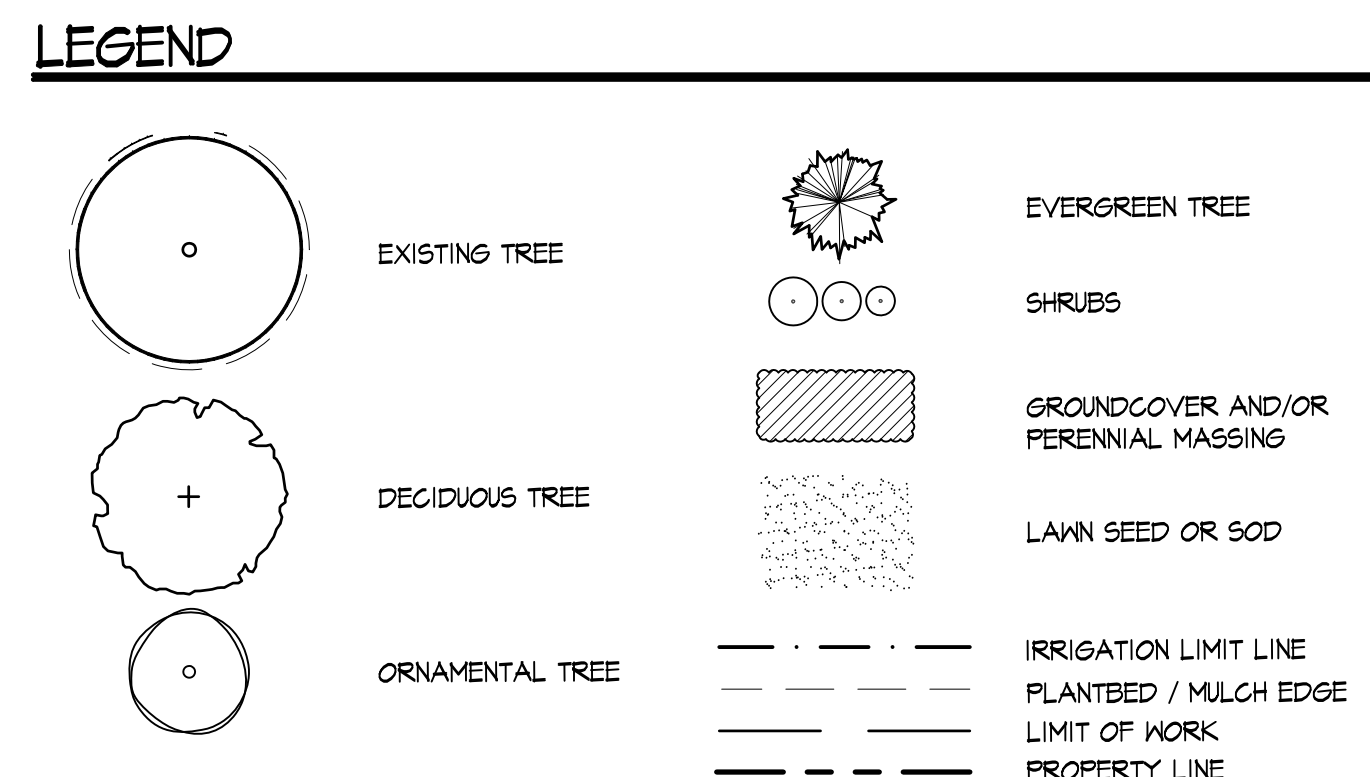
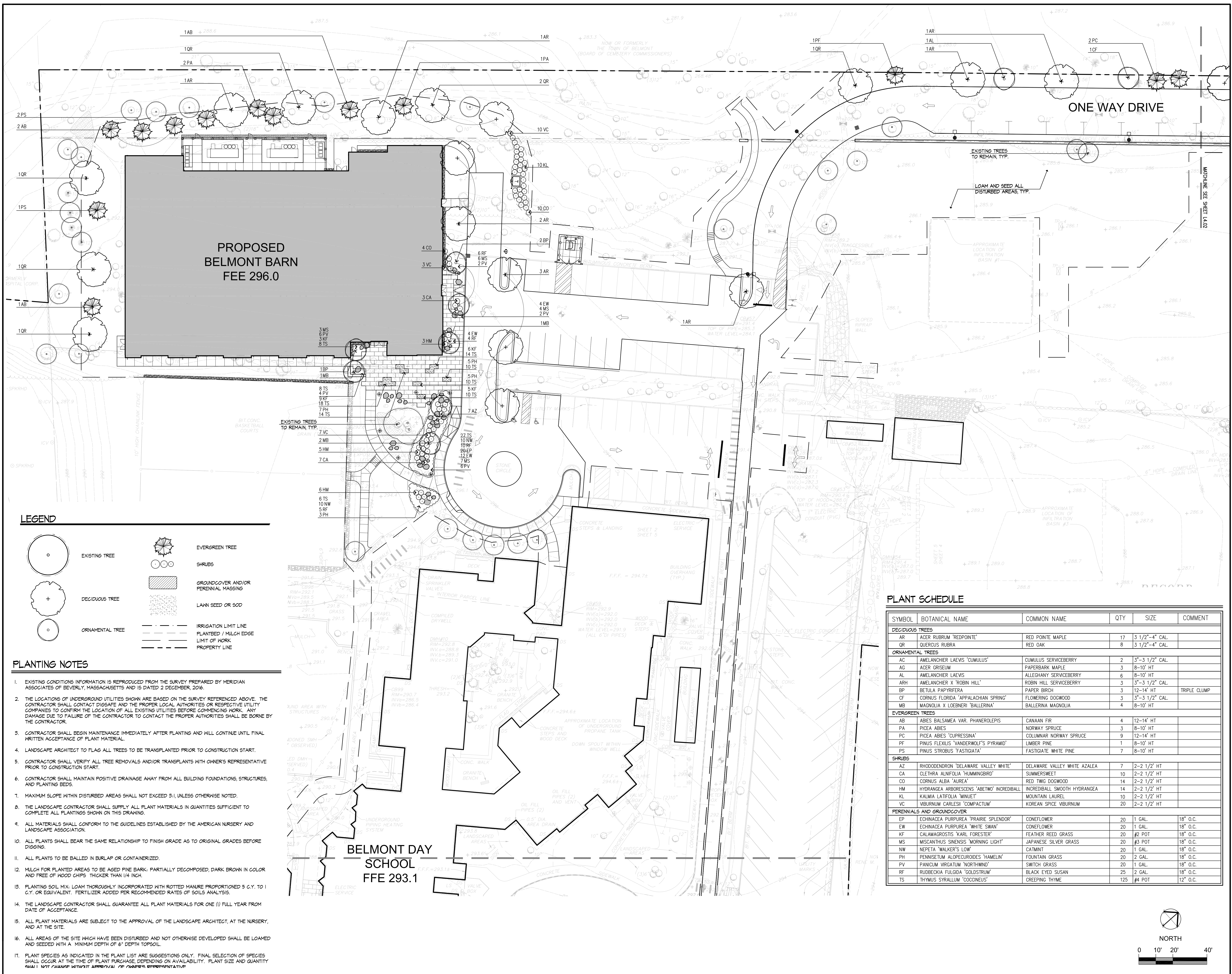
SIMPSON GUMPERTZ AND HEGER, INC.
41 SEYON STREET BUILDING 1
SUITE 500, WALTHAM, MA 02453
P 781 907.9000 F 781 907.9009
STRUCTURAL

STANTEC

226 CAUSEWAY STREET
BOSTON, MA 02114
P 617 234.3100
LANDSCAPE/CIVIL

RIST-FROST SHUMWAY ENGINEERING
71 WATER STREET
LACONIA, NH 03246
P 603 524.4647

MEP/FP

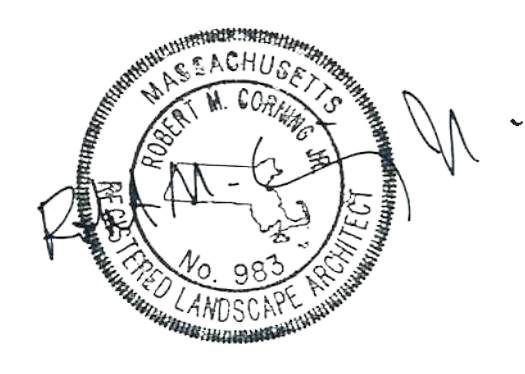


- PLANTING NOTES**
- EXISTING CONDITIONS INFORMATION IS REPRODUCED FROM THE SURVEY PREPARED BY MERIDIAN ASSOCIATES OF BEVERLY, MASSACHUSETTS AND IS DATED 2 DECEMBER, 2016.
 - THE LOCATIONS OF UNDERGROUND UTILITIES SHOWN ARE BASED ON THE SURVEY REFERENCED ABOVE. THE CONTRACTOR SHALL CONTACT DIGSAFE AND THE PROPER LOCAL AUTHORITIES OR RESPECTIVE UTILITY COMPANIES TO CONFIRM THE LOCATION OF ALL EXISTING UTILITIES BEFORE COMMENCING WORK. ANY DAMAGE DUE TO FAILURE OF THE CONTRACTOR TO CONTACT THE PROPER AUTHORITIES SHALL BE BORNE BY THE CONTRACTOR.
 - CONTRACTOR SHALL BEGIN MAINTENANCE IMMEDIATELY AFTER PLANTING AND WILL CONTINUE UNTIL FINAL WRITTEN ACCEPTANCE OF PLANT MATERIAL.
 - LANDSCAPE ARCHITECT TO FLAG ALL TREES TO BE TRANSPLANTED PRIOR TO CONSTRUCTION START.
 - CONTRACTOR SHALL VERIFY ALL TREE REMOVALS AND/OR TRANSPLANTS WITH OWNER'S REPRESENTATIVE PRIOR TO CONSTRUCTION START.
 - CONTRACTOR SHALL MAINTAIN POSITIVE DRAINAGE AWAY FROM ALL BUILDING FOUNDATIONS, STRUCTURES, AND PLANTING BEDS.
 - MAXIMUM SLOPE WITHIN DISTURBED AREAS SHALL NOT EXCEED 3:1, UNLESS OTHERWISE NOTED.
 - THE LANDSCAPE CONTRACTOR SHALL SUPPLY ALL PLANT MATERIALS IN QUANTITIES SUFFICIENT TO COMPLETE ALL PLANTINGS SHOWN ON THIS DRAWING.
 - ALL MATERIALS SHALL CONFORM TO THE GUIDELINES ESTABLISHED BY THE AMERICAN NURSERY AND LANDSCAPE ASSOCIATION.
 - ALL PLANTS SHALL BEAR THE SAME RELATIONSHIP TO FINISH GRADE AS TO ORIGINAL GRADES BEFORE DIGGING.
 - ALL PLANTS TO BE BALLED IN BURLAP OR CONTAINERIZED.
 - MULCH FOR PLANTED AREAS TO BE ASHD PINE BARK, PARTIALLY DECOMPOSED, DARK BROWN IN COLOR AND FREE OF NOOD CHIPS, THICKER THAN 1/4 INCH.
 - PLANTING SOIL MIX: LOAM THOROUGHLY INCORPORATED WITH ROTTED MANURE PROPORTIONED 5 C.Y. TO 1 C.Y. OR EQUIVALENT. FERTILIZER ADDED PER RECOMMENDED RATES OF SOILS ANALYSIS.
 - THE LANDSCAPE CONTRACTOR SHALL GUARANTEE ALL PLANT MATERIALS FOR ONE (1) FULL YEAR FROM DATE OF ACCEPTANCE.
 - ALL PLANT MATERIALS ARE SUBJECT TO THE APPROVAL OF THE LANDSCAPE ARCHITECT, AT THE NURSERY, AND AT THE SITE.
 - ALL AREAS OF THE SITE WHICH HAVE BEEN DISTURBED AND NOT OTHERWISE DEVELOPED SHALL BE LOAMED AND SEEDED WITH A MINIMUM DEPTH OF 6" DEPTH TOPSOIL.
 - PLANT SPECIES AS INDICATED IN THE PLANT LIST ARE SUGGESTIONS ONLY. FINAL SELECTION OF SPECIES SHALL OCCUR AT THE TIME OF PLANT PURCHASE, DEPENDING ON AVAILABILITY. PLANT SIZE AND QUANTITY SHALL NOT CHANGE WITHOUT APPROVAL OF OWNER'S REPRESENTATIVE.

PLANT SCHEDULE

SYMBOL	BOTANICAL NAME	COMMON NAME	QTY	SIZE	COMMENT
DECIDUOUS TREES					
AR	ACER RUBRUM 'REDPOINTE'	RED POINTE MAPLE	17	3 1/2"-4" CAL	
QR	QUERCUS RUBRA	RED OAK	8	3 1/2"-4" CAL	
ORNAMENTAL TREES					
AC	AMELANCHIER LAEVIS 'CUMULUS'	CUMULUS SERVICEBERRY	2	3"-3 1/2" CAL	
AG	ACER GRISELUM	PAPERBARK MAPLE	3	8-10' HT	
AL	AMELANCHIER LAEVIS	ALLEGHANY SERVICEBERRY	6	8-10' HT	
ARH	AMELANCHIER X 'ROBIN HILL'	ROBIN HILL SERVICEBERRY	3	3"-3 1/2" CAL	
BP	BETULA PAPPYRIFERA	PAPER BIRCH	3	12-14' HT	TRIPLE CLUMP
CF	CORNUS FLORIDA 'APPALACHIAN SPRING'	FLOWERING DOGWOOD	3	3"-3 1/2" CAL	
MB	MAGNOLIA X LOEBNERI 'BALLERINA'	BALLERINA MAGNOLIA	4	8-10' HT	
EVERGREEN TREES					
AB	ABIES BALSAMEA VAR. PHANEROLEPIS	CANAAN FIR	4	12-14' HT	
PA	PICEA ABIES	NORWAY SPRUCE	3	8-10' HT	
PC	PICEA ABIES 'CUPRESSINA'	COLUMNAR NORWAY SPRUCE	9	12-14' HT	
PF	PINUS FLEXILIS 'VANDERWOLF'S PYRAMID'	LIMBER PINE	1	8-10' HT	
PS	PINUS STROBUS 'FASTIGIATA'	FASTIGIATE WHITE PINE	7	8-10' HT	
SHRUBS					
AZ	RHODODENDRON 'DELAWARE VALLEY WHITE'	DELAWARE VALLEY WHITE AZALEA	7	2-2 1/2' HT	
CA	CLETHRA ALNIFOLIA 'HUMMINGBIRD'	SUMMERSWEET	10	2-2 1/2' HT	
CO	CORNUS ALBA 'AUREA'	RED TWIG DOGWOOD	14	2-2 1/2' HT	
HM	HYDRANGEA ARBORESCENS 'ABETWO' INCREDIBALL	INCREDIBALL SMOOTH HYDRANGEA	14	2-2 1/2' HT	
KL	KALMIA LATIFOLIA 'MINUET'	MOUNTAIN LAUREL	10	2-2 1/2' HT	
VC	VIBURNUM CARLESI 'COMPACTUM'	KOREAN SPICE VIBURNUM	20	2-2 1/2' HT	
PERENNIALS AND GROUND COVER					
EP	ECHINACEA PURPUREA 'PRAIRIE SPLENDOR'	CONEFLOWER	20	1 GAL.	18" O.C.
EAL	ECHINACEA PURPUREA 'WHITE SWAN'	CONEFLOWER	20	1 GAL.	18" O.C.
KF	CALAMAGROSTIS 'KARL FORESTER'	FEATHER REED GRASS	20	#2 POT	18" O.C.
MS	MISCANTHUS SINENSIS 'MORNING LIGHT'	JAPANESE SILVER GRASS	20	#3 POT	18" O.C.
NW	NEPETA 'WALKER'S LOW'	CATMINT	20	1 GAL.	18" O.C.
PH	PENNISSETUM ALOPECUROIDES 'HADELIN'	FOUNTAIN GRASS	20	2 GAL.	18" O.C.
PV	PANICUM VIRGATUM 'NORTHWIND'	SWITCH GRASS	20	1 GAL.	18" O.C.
RF	RUDEBECKIA FULGIDA 'GOLDSTRUM'	BLACK EYED SUSAN	25	2 GAL.	18" O.C.
TS	THYMUS SYRALLUM 'COCOINEUS'	CREeping THYME	125	#4 POT	12" O.C.

KEY PLAN



STAMP

DATE	REVISION
February 27, 2017	Site Plan Review Submission
June 30, 2017	Cemetery Buffer Enhancements

REVISIONS ON SHEET

SCALE AS NOTED

PLANTING PLAN

L4.01

