

SPECIAL PERMIT REVIEW

CUSHING VILLAGE

PETER QUINN ARCHITECTS
 ARCHITECTURE
 PLANNING
 COMMUNITY DESIGN

PETER QUINN ARCHITECTS LLC
 259 ELM ST, SUITE 301
 SOMERVILLE MA 02144
 PH 617-354-3989 FAX 617-868-0280

SEAL

CONSULTANT

CONSULTANT

PROJECT
 CUSHING VILLAGE
 CUSHING SQUARE
 BELMONT, MA

PREPARED FOR



6 LITTLEFIELD ROAD
 ACTON, MA 01720

DRAWING TITLE

TITLE SHEET
 SPECIAL PERMIT

SCALE AS NOTED

REVISION	DATE
PB MTG	16 DEC 2014
PB PRESENTATION	25 NOV 2014
UPDATE	18 NOV 2014
SPECIAL PERMIT REVIEW	23 OCT 2014
DRAWN BY WFD/AMF	REVIEWED BY PQ

SHEET



SCOPE OF REVIEW

(SEE ACCOMPANYING NARRATIVE)

1. UPDATES TO THE HYLAND
2. RELOCATION OF MUNICIPAL PARKING ACCESS
3. EXPANDED ROOF ROOM OF THE WINSLOW
4. GENERAL BUILDING ELEVATIONS - WALL VENTS

LIST OF DRAWINGS

		TITLE SHEET
1.	A 1.1 - A 1.4	COLORED ELEVATIONS
	A 2.1 - A 2.6	3D VIEWS
	AG1.1 / AH1.2 - A1.5	HYLAND PLANS
2.	AP 1.1	POMONA PLAN
3.	AW 1.4	WINSLOW ROOF PLAN
4.	A 3.1 - A 3.4	WINSLOW ELEVATIONS
	A 3.5 - A 3.9	POMONA ELEVATIONS
	A3.10 - A3.14	HYLAND ELEVATIONS

1. UPDATES TO THE HYLAND



HYLAND - COMMON ST. ELEV.

PROPOSED REVISIONS



HYLAND - COMMON ST. ELEV.

SPECIAL PERMIT APPROVED

PETER QUINN ARCHITECTS
 ARCHITECTURE
 PLANNING
 COMMUNITY DESIGN

PETER QUINN ARCHITECTS LLC
 259 ELM ST. SUITE 301
 SOMERVILLE MA 02144
 PH 617-354-9899 FAX 617-868-0280

SCALE

CONSULTANT

CONSULTANT

PROJECT
 CUSHING VILLAGE
 CUSHING SQUARE
 BELMONT, MA

PREPARED FOR
SMITH LEGACY PARTNERS
 6 LITTLEFIELD ROAD
 ACTON, MA 01720

DRAWING TITLE
THE HYLAND BUILDING 3

SCALE/NOTED	REVISION	DATE

PB MTG	16 DEC 2014
PB PRESENTATION	25 NOV 2014
UPDATE	18 NOV 2014
SPECIAL PERMIT REVIEW	23 OCT 2014
DRAWN BY WFD/AMF	REVIEWED BY PQ
SHEET	

A1.1



HYLAND - BELMONT ST. ELEV.

PROPOSED REVISIONS



HYLAND - BELMONT ST. ELEV.

SPECIAL PERMIT APPROVED

PETER QUINN ARCHITECTS
ARCHITECTURE
PLANNING
COMMUNITY DESIGN

PETER QUINN ARCHITECTS LLC
259 ELM ST. SUITE 301
SOMERVILLE MA 02144
PH 617-354-9899 FAX 617-868-0280

SCALE

CONSULTANT

CONSULTANT

PROJECT
CUSHING VILLAGE
CUSHING SQUARE
BELMONT, MA

PREPARED FOR
SMITH LEGACY PARTNERS
6 LITTLEFIELD ROAD
ACTON, MA 01720

DRAWING TITLE
THE HYLAND BUILDING 3

SCALE AS NOTED

REVISION	DATE

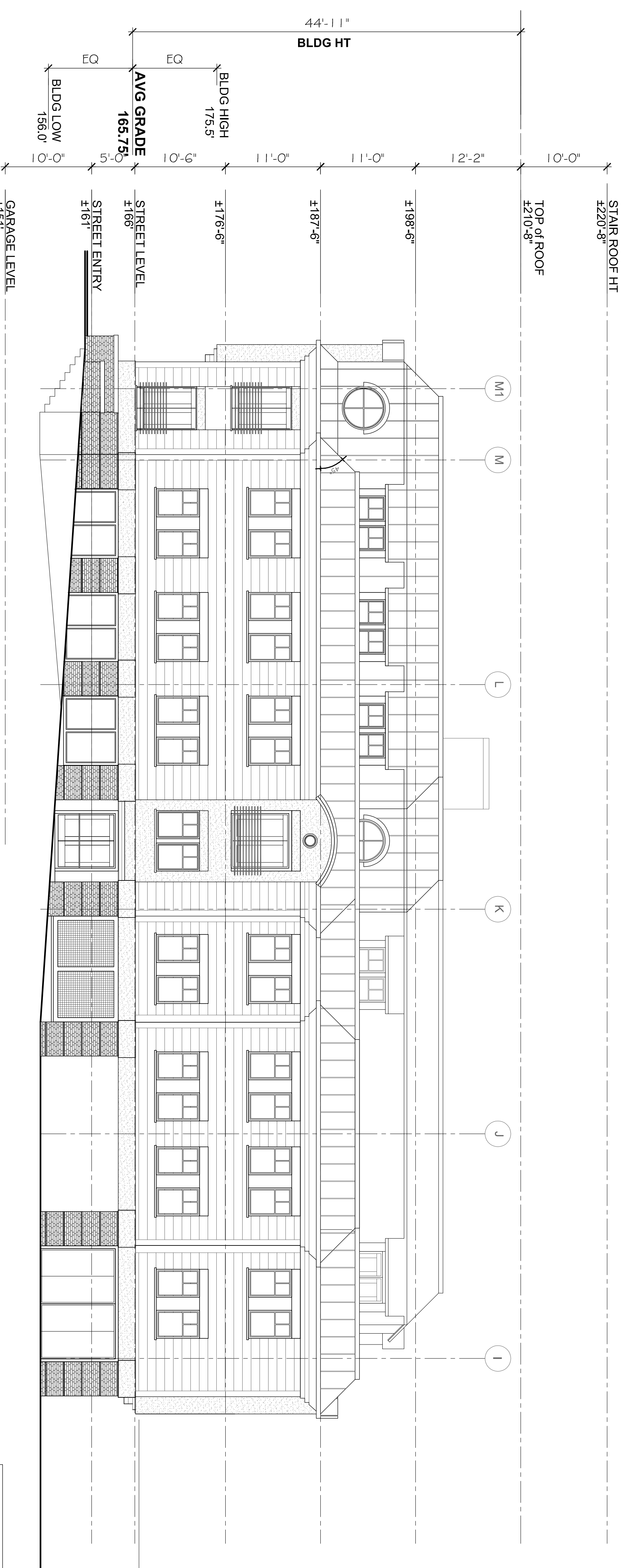
PB MTG	16 DEC 2014
PB REPRESENTATION	25 NOV 2014
UPDATE	18 NOV 2014
SPECIAL PERMIT REVIEW	23 OCT 2014
DRAWN BY	WFD/JAM
REVIEWED BY	PQ
SHEET	

A1.2



HYLAND - HORNE ROAD ELEV.

PROPOSED REVISIONS



HYLAND - HORNE ROAD ELEV.

SPECIAL PERMIT APPROVED

PETER QUINN ARCHITECTS
 ARCHITECTURE
 PLANNING
 COMMUNITY DESIGN

PETER QUINN ARCHITECTS LLC
 259 ELM ST. SUITE 301
 SOMERVILLE MA 02144
 PH 617-354-9889 FAX 617-868-0280

SCALE

CONSULTANT

CONSULTANT

PROJECT
 CUSHING VILLAGE
 CUSHING SQUARE
 BELMONT, MA

PREPARED FOR
SMITH LEGACY PARTNERS
 6 LITTLEFIELD ROAD
 ACTON, MA 01720

DRAWING TITLE
THE HYLAND BUILDING 3

SCALE AS NOTED

REVISION	DATE

PB MTG	16 DEC 2014
PB PRESENTATION	25 NOV 2014
UPDATE	18 NOV 2014
SPECIAL PERMIT REVIEW	23 OCT 2014
DRAWN BY	WFD/AMF
REVIEWED BY	PQ
SHEET	

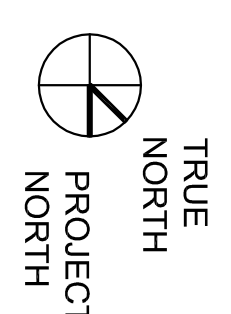
A1.4

DRAWING TITLE
FIRST FLOOR PLAN

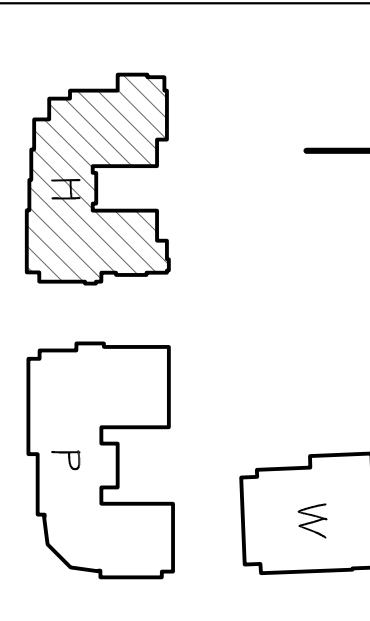
THE HYLAND
 SCALE(S) NOTED

REVISION	DATE

PB MTTG	16 DEC 2014
PB PRESENTATION	25 NOV 2014
UPDATE	18 NOV 2014
SPECIAL PERMIT REVIEW	23 OCT 2014
DRAWN BY	KV/SJ/AMF
REVIEWED BY	PQ
SHEET	



KEY PLAN

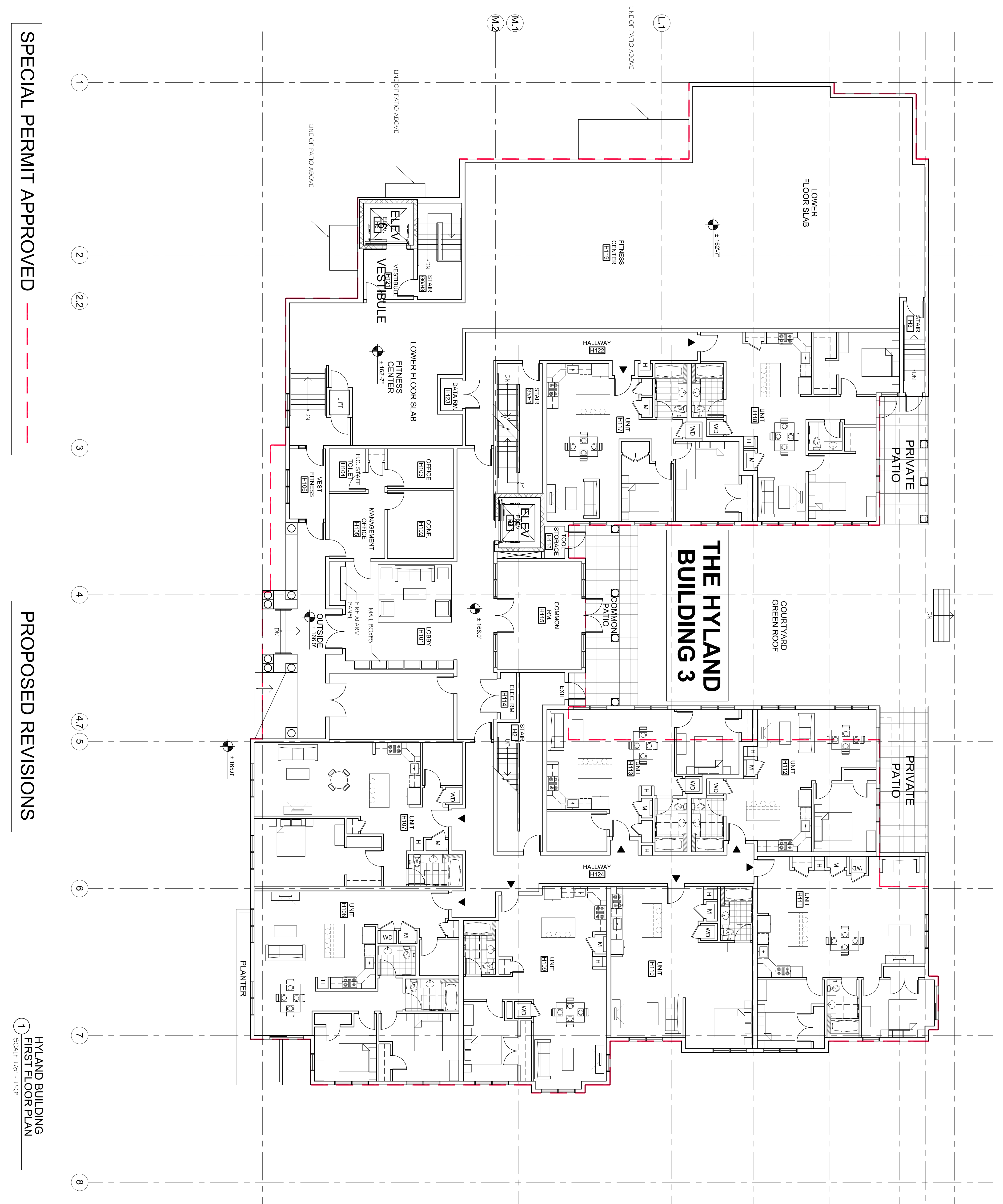


AH1.2

HYLAND BUILDING
 FIRST FLOOR PLAN
 SCALE 1/8" = 1'-0"

PROPOSED REVISIONS

SPECIAL PERMIT APPROVED



SEAL

CONSULTANT

CONSULTANT

PROJECT
 CUSHING VILLAGE
 CUSHING SQUARE
 BELMONT, MA

PREPARED FOR

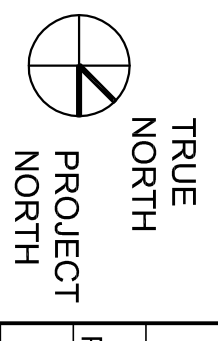
 6 LITTLEFIELD ROAD
 ACTON, MA 01720

DRAWING TITLE
 FOURTH FLOOR
 PLAN

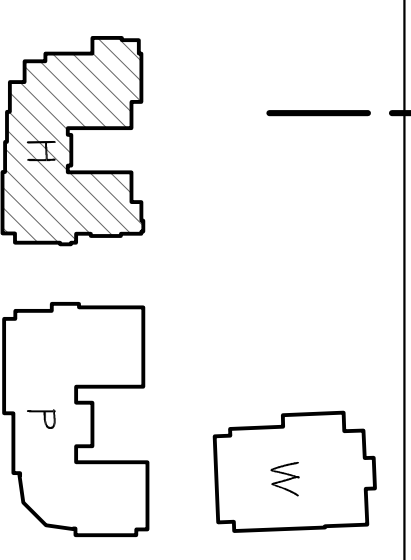
THE HYLAND
 SCALES AS NOTED

REVISION DATE

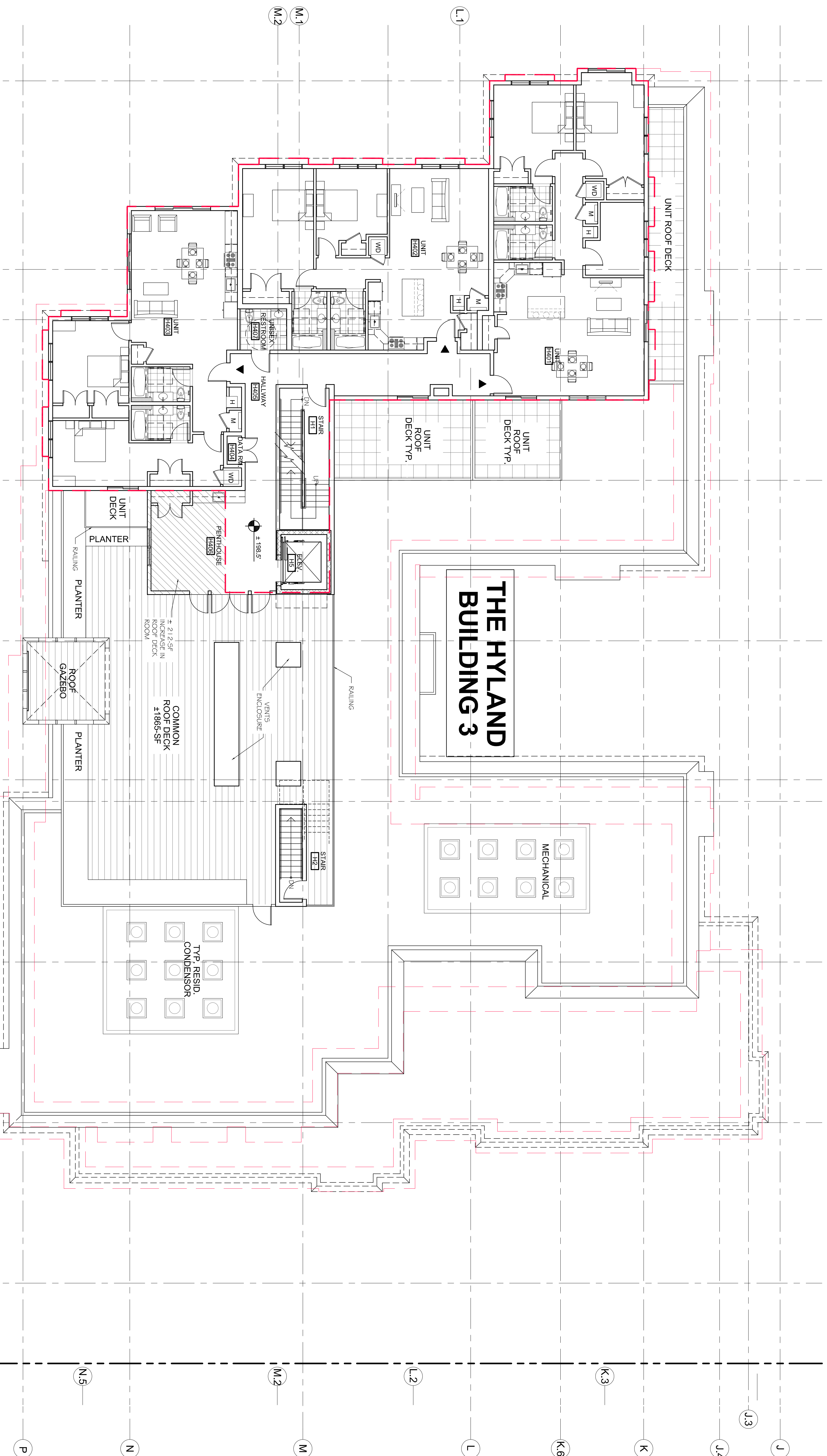
PB. MTG	16 DEC 2014
PB. PRESENTATION	25 NOV 2014
UPDATE	18 NOV 2014
SPECIAL PERMIT REVIEW	23 OCT 2014
DRAWN BY	KVS/AMF
REVIEWED BY	PQ



KEY PLAN



AH1.5

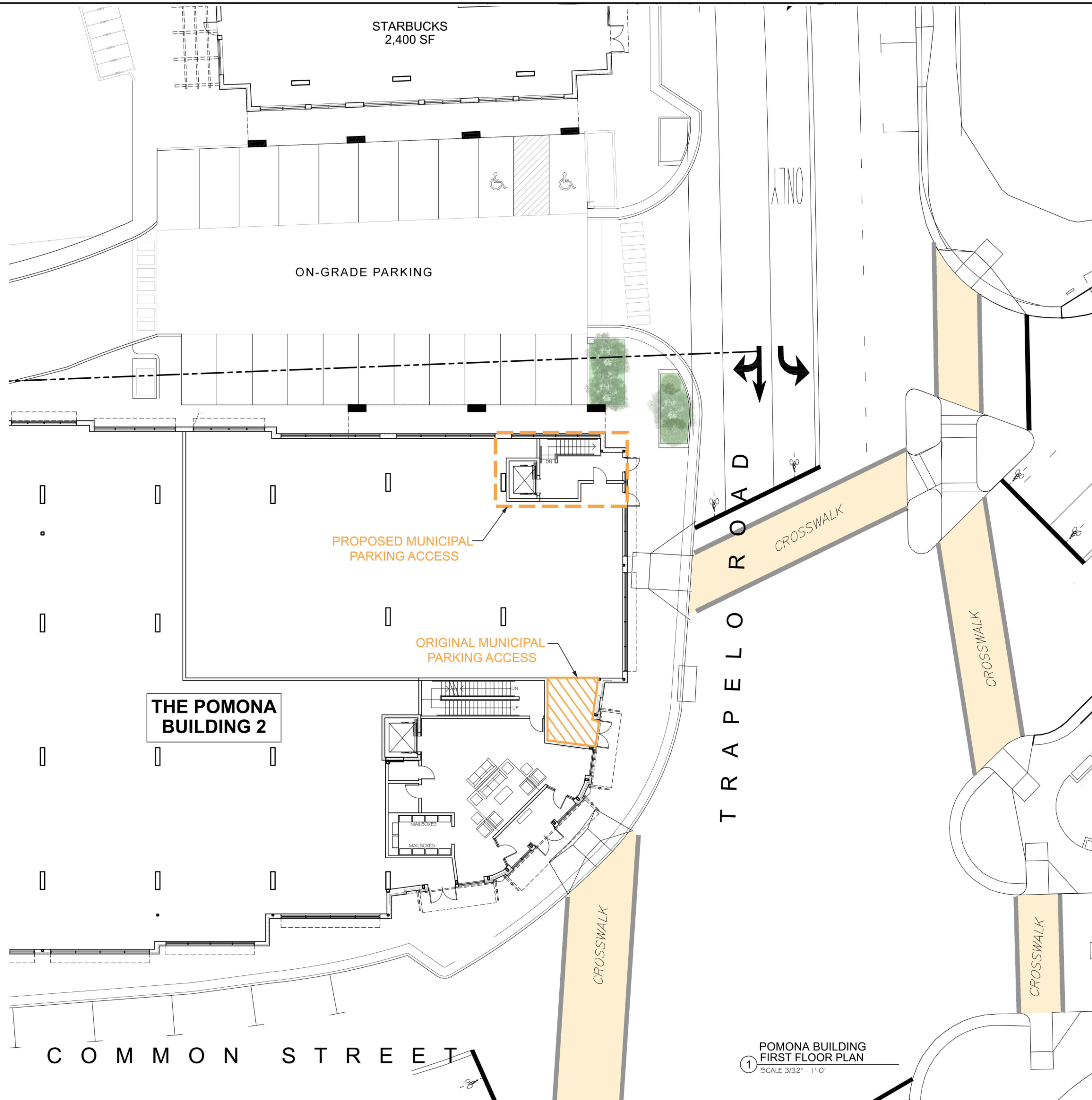


SPECIAL PERMIT APPROVED

PROPOSED REVISIONS

HYLAND BUILDING
 FOURTH FLOOR PLAN
 SCALE 1/8" = 1'-0"

1 2 2.2 3 4 4.7 5 6 7 8



STARBUCKS
2,400 SF

ON-GRADE PARKING

PROPOSED MUNICIPAL
PARKING ACCESS

ORIGINAL MUNICIPAL
PARKING ACCESS

THE POMONA
BUILDING 2

T R A P E L O R O A D

CROSSWALK

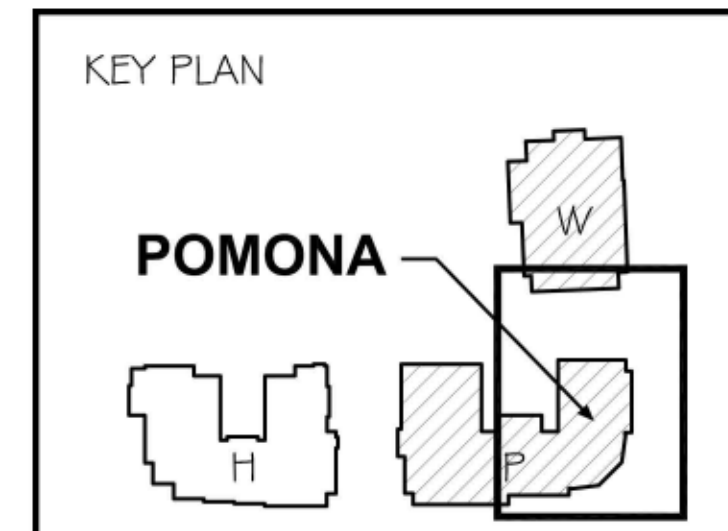
CROSSWALK

CROSSWALK

CROSSWALK

C O M M O N S T R E E T

① POMONA BUILDING
FIRST FLOOR PLAN
SCALE 3/32" = 1'-0"



PETER QUINN ARCHITECTS
ARCHITECTURE
PLANNING
COMMUNITY DESIGN

PETER QUINN ARCHITECTS LLC
259 ELM ST, SUITE 301
SOMERVILLE MA 02144
PH 617-354-3989 FAX 617-868-0280

SEAL

CONSULTANT

CONSULTANT

PROJECT
CUSHING VILLAGE
CUSHING SQUARE
BELMONT, MA

PREPARED FOR



6 LITTLEFIELD ROAD
ACTON, MA 01720

DRAWING TITLE

FIRST FLOOR
PLAN

THE POMONA
SCALE AS NOTED

REVISION	DATE

PB PRESENTATION	25 NOV 2014
UPDATE	18 NOV 2014
SPECIAL PERMIT REVIEW	23 OCT 2014
DRAWN BY KVS/AMF	REVIEWED BY PQ

SHEET

AP1.1

3. EXPANDED ROOF ROOMS

4. GENERAL ELEVATIONS

SEAL

CONSULTANT

CONSULTANT

PROJECT
 CUSHING VILLAGE
 CUSHING SQUARE
 BELMONT, MA

PREPARED FOR

 6 LITTLEFIELD ROAD
 ACTON, MA 01720

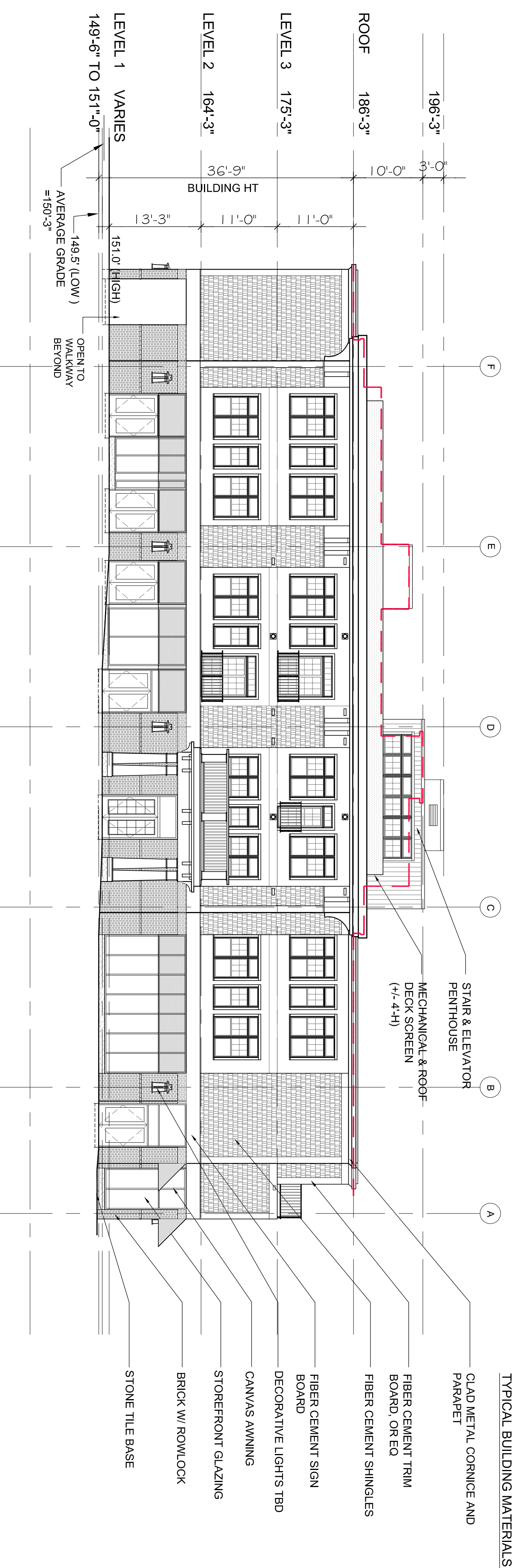
DRAWING TITLE
THE WINSLOW BUILDING 1

ELEVATIONS
 SCALE AS NOTED

REVISION	DATE
PB MTG	16 DEC 2014
PB PRESENTATION	25 NOV 2014
UPDATE	18 NOV 2014
SPECIAL PERMIT REVIEW	23 OCT 2014
DRAWN BY	REVIEWED BY
KV/SJAMF	PQ

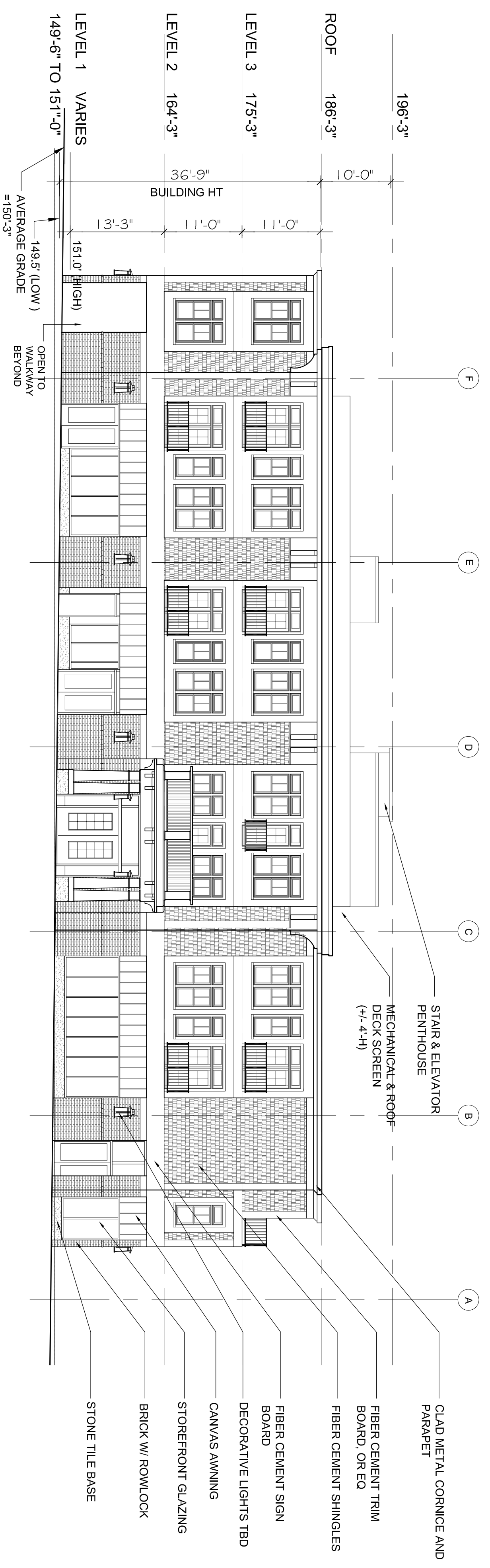
SHEET

A3.1



1 TRAPELO ROAD ELEVATION
 SCALE: 3/32"=1'-0"

PROPOSED REVISIONS



1 TRAPELO ROAD ELEVATION
 SCALE: 3/32"=1'-0"

SPECIAL PERMIT APPROVED

SPECIAL PERMIT APPROVED

SEAL

CONSULTANT
 CONSULTANT

PROJECT
 CUSHING VILLAGE
 CUSHING SQUARE
 BELMONT, MA

PREPARED FOR

 6 LITTLEFIELD ROAD
 ACTON, MA 01720

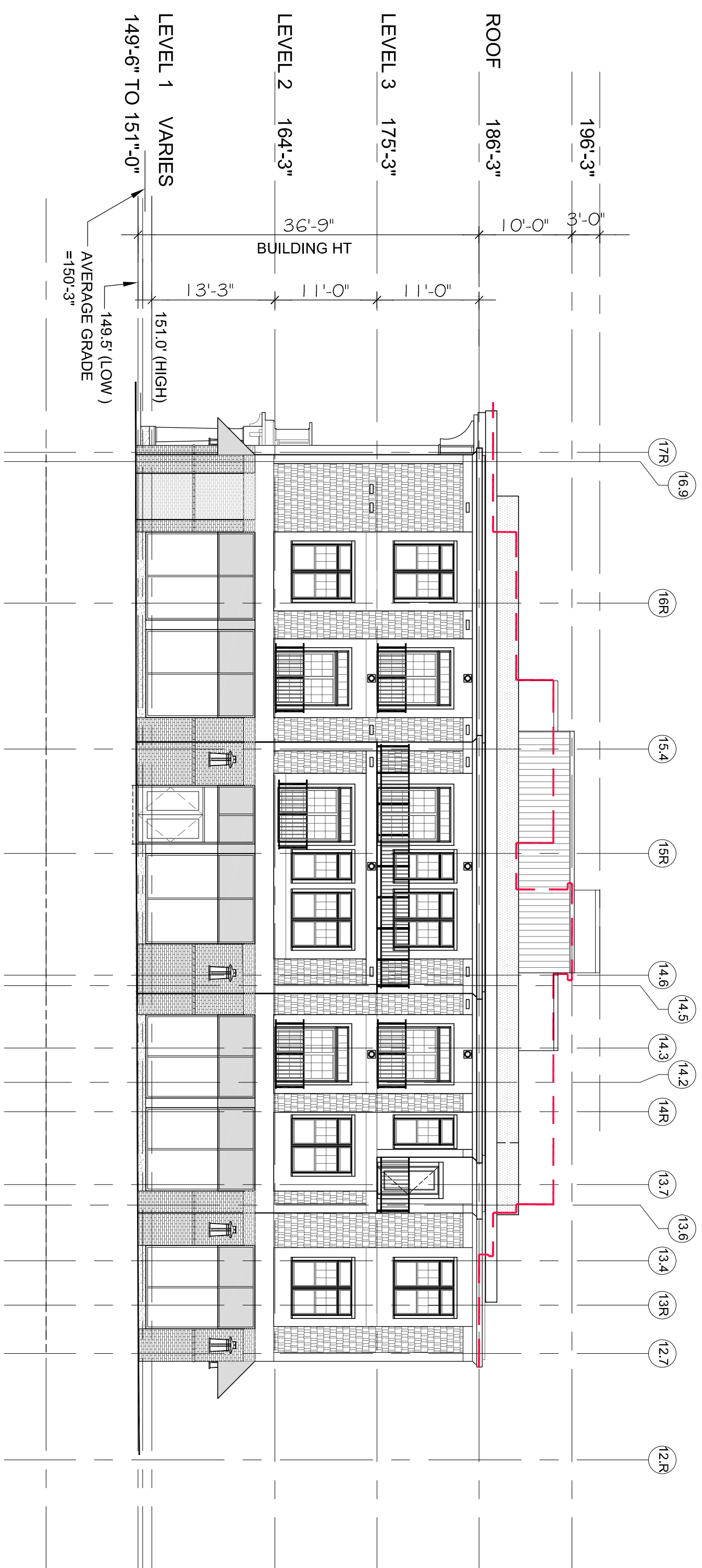
DRAWING TITLE
THE WINSLOW BUILDING 1

ELEVATIONS

SCALE AS NOTED

REVISION	DATE
PB MTG	16 DEC 2014
PB PRESENTATION	25 NOV 2014
UPDATE	18 NOV 2014
SPECIAL PERMIT REVIEW	23 OCT 2014
DRAWN BY	REVIEWED BY
KVS/AMF	PQ

SHEET



2 WILLISTON ROAD ELEVATION
 SCALE: 3/32"=1'-0"

PROPOSED REVISIONS



2 WILLISTON ROAD ELEVATION
 SCALE: 3/32"=1'-0"

SPECIAL PERMIT APPROVED

SPECIAL PERMIT APPROVED

SEAL

CONSULTANT

CONSULTANT

PROJECT
 CUSHING VILLAGE
 CUSHING SQUARE
 BELMONT, MA

PREPARED FOR

 6 LITTLEFIELD ROAD
 ACTON, MA 01720

DRAWING TITLE
**THE WINSLOW
 BUILDING 1**

ELEVATIONS
 SCALE AS NOTED

REVISION	DATE
PB MTG	16 DEC 2014
PB PRESENTATION	25 NOV 2014
UPDATE	18 NOV 2014
SPECIAL PERMIT REVIEW	23 OCT 2014
DRAWN BY	REVIEWED BY
KV/SJAMF	PQ

SHEET



3 REAR ELEVATION
 SCALE: 3/32"=1'-0"

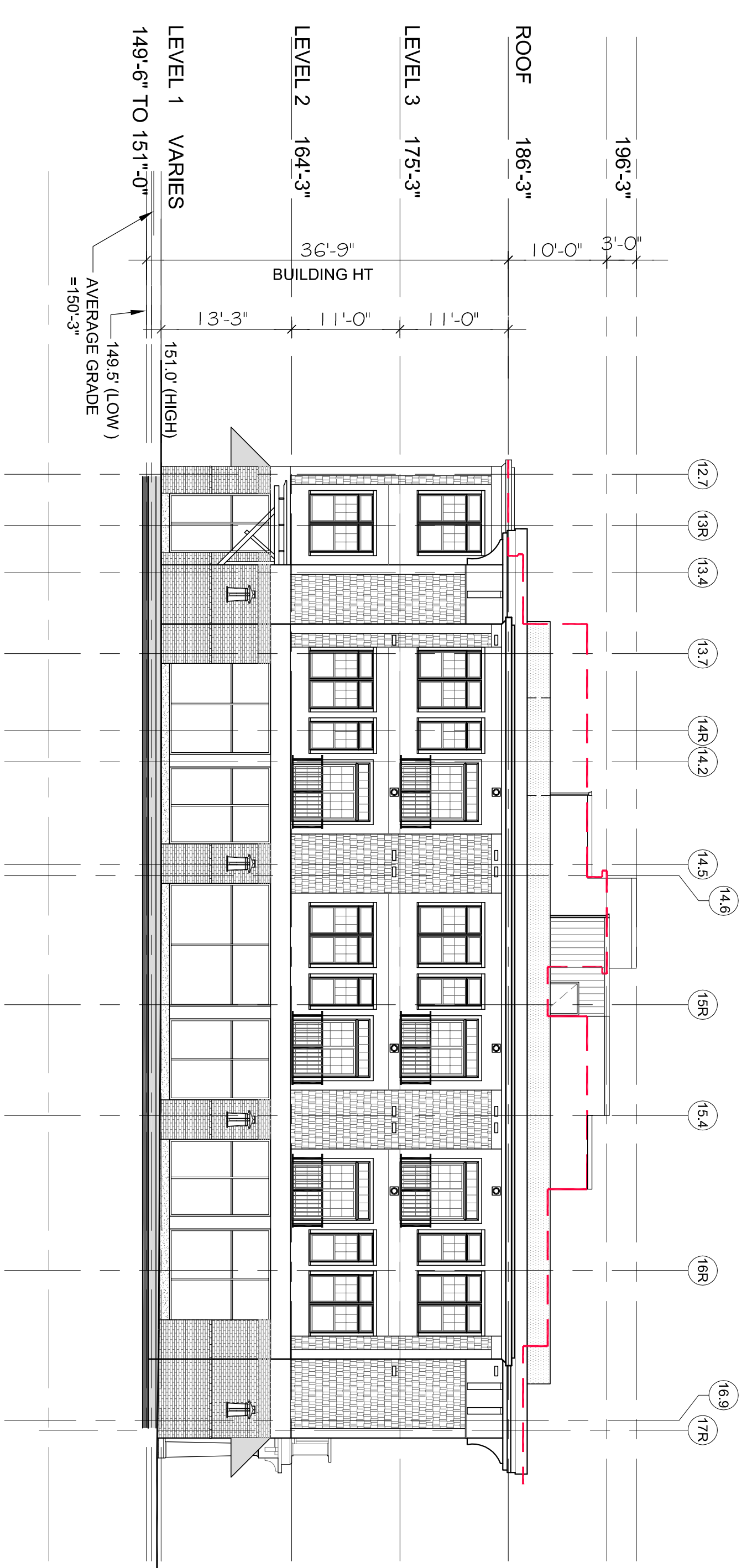
PROPOSED REVISIONS



3 REAR ELEVATION
 SCALE: 3/32"=1'-0"

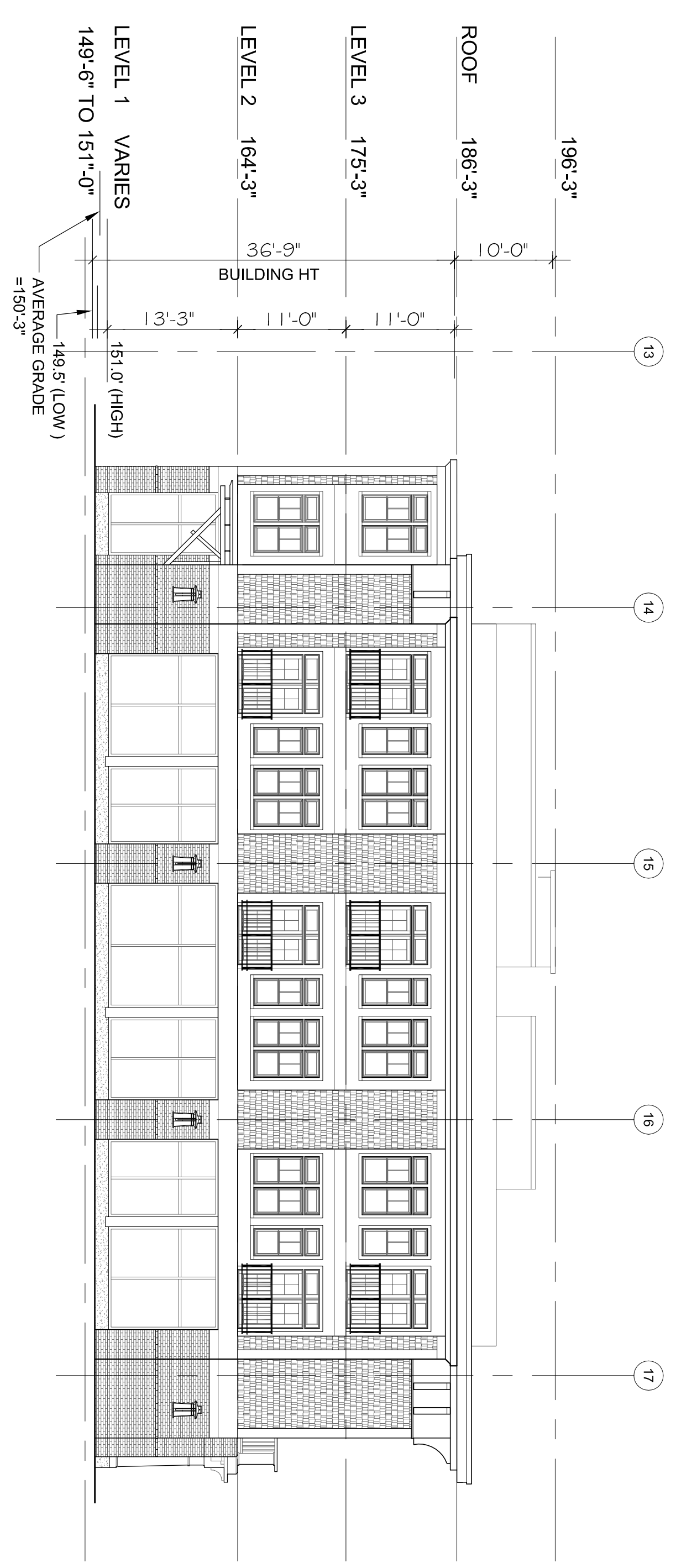
SPECIAL PERMIT APPROVED

SPECIAL PERMIT APPROVED



4 SIDE ELEVATION (DRIVEWAY)
SCALE: 3/32"=1'-0"

PROPOSED REVISIONS



4 SIDE ELEVATION (DRIVEWAY)
SCALE: 3/32"=1'-0"

SPECIAL PERMIT APPROVED

SPECIAL PERMIT APPROVED

PETER QUINN ARCHITECTS
ARCHITECTURE
PLANNING
COMMUNITY DESIGN

PETER QUINN ARCHITECTS LLC
299 ELM ST., SUITE 301
SOMERVILLE MA 02144
PH 617-354-3989 FAX 617-896-0280

SEAL

CONSULTANT

CONSULTANT

PROJECT
CUSHING VILLAGE
CUSHING SQUARE
BELMONT, MA

PREPARED FOR
SMITH LEGACY PARTNERS
6 LITTLEFIELD ROAD
ACTON, MA 01720

DRAWING TITLE
THE WINSLOW
BUILDING 1

ELEVATIONS
SCALE AS NOTED

REVISION	DATE
PB MTG	16 DEC 2014
PB PRESENTATION	25 NOV 2014
UPDATE	18 NOV 2014
SPECIAL PERMIT REVIEW	23 OCT 2014
DRAWN BY	REVIEWED BY
K/SJAMF	PQ

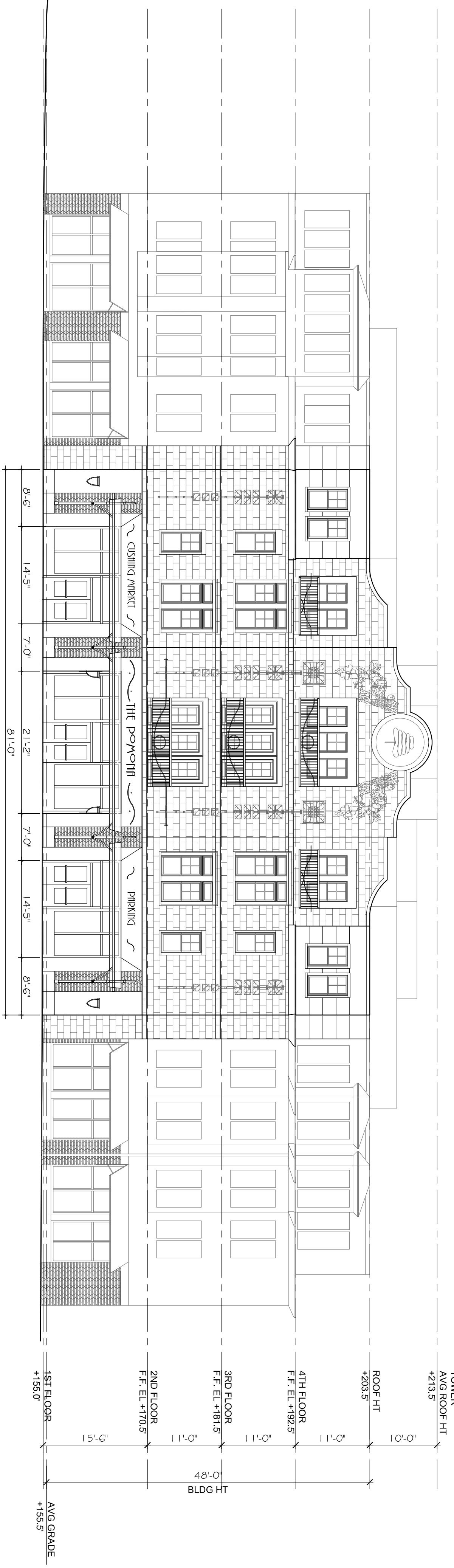
A3.4
SHEET

REVISION	DATE
PB MTG	18 DEC 2014
PB	25 NOV 2014
PRESENTATION	18 NOV 2014
UPDATE	23 OCT 2014
SPECIAL PERMIT REVIEW	23 OCT 2014
DRAWN BY	KVS/AMF
REVIEWED BY	PQ
SHEET	



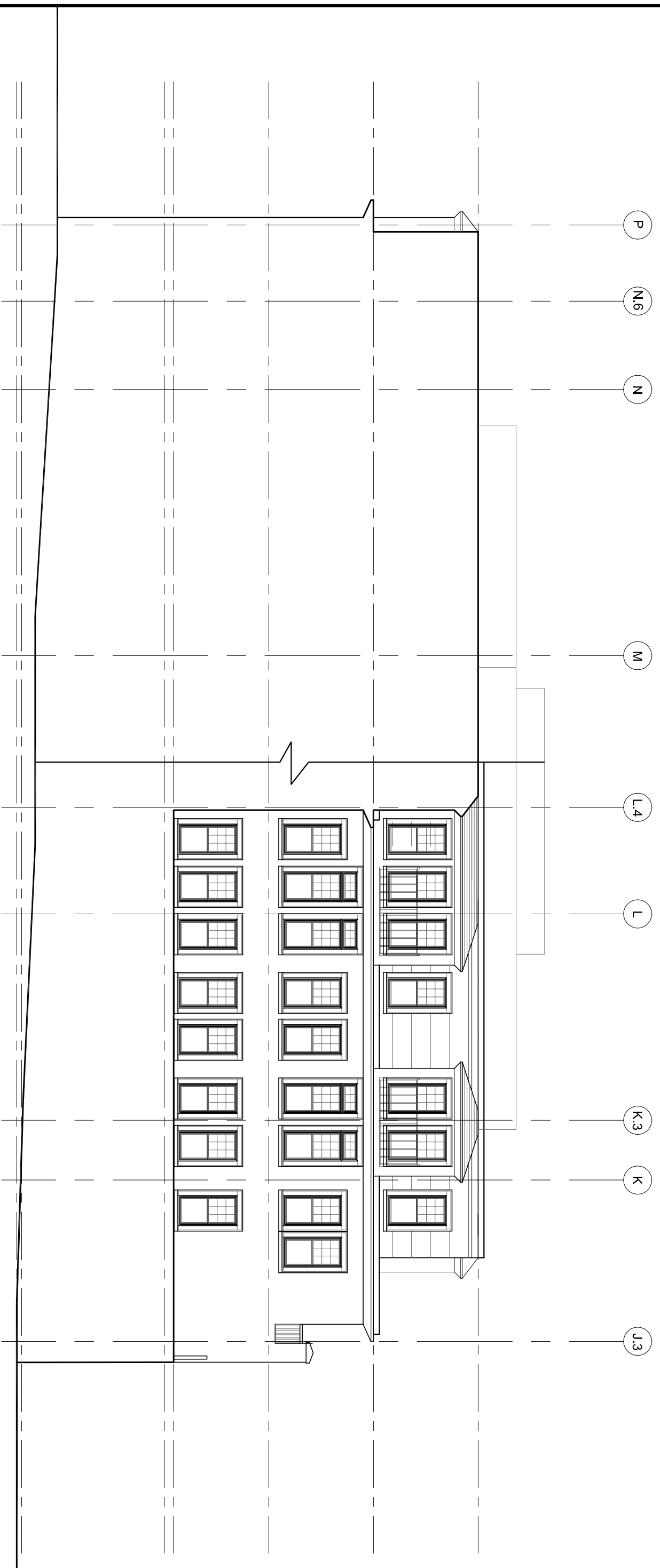
2 CORNER ELEVATION (FLATTENED)
 SCALE: 3/32"=1'-0"

PROPOSED REVISIONS

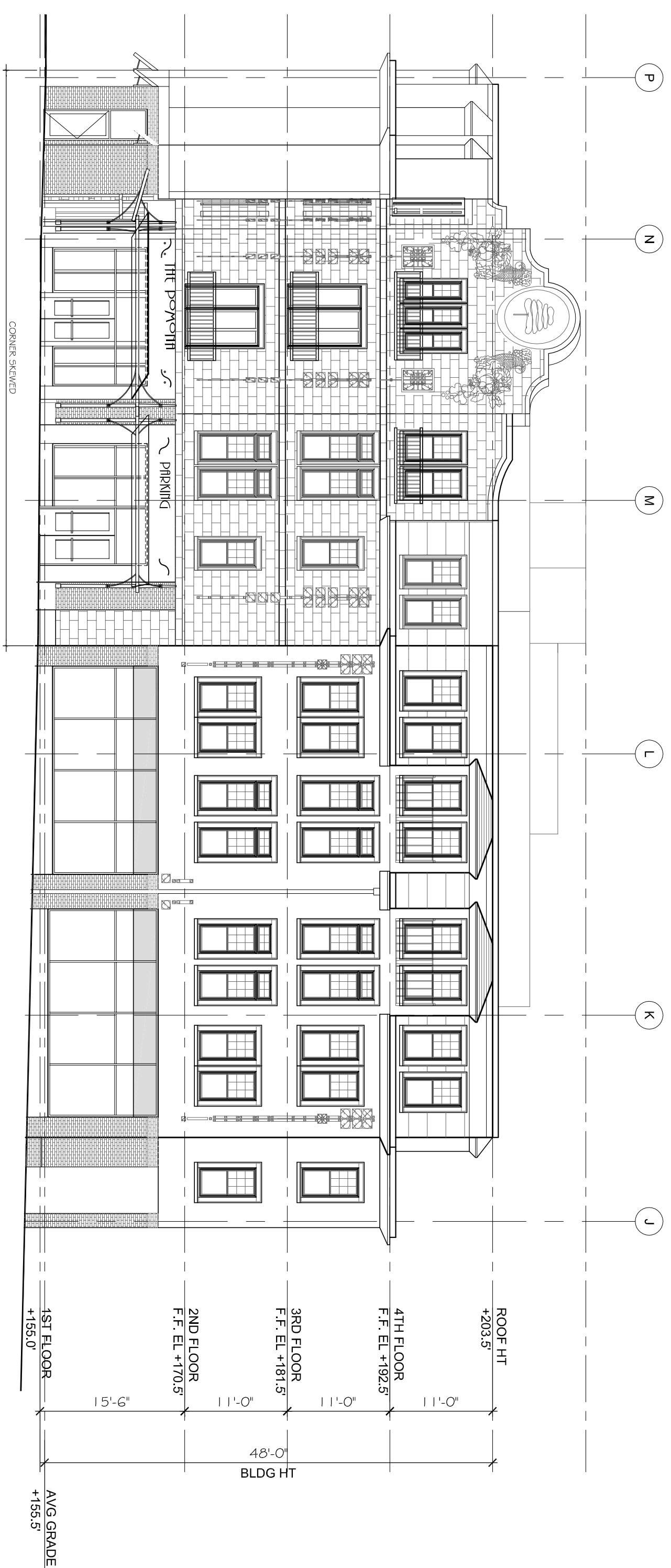


2 CORNER ELEVATION (FLATTENED)
 SCALE: 3/32"=1'-0"

SPECIAL PERMIT APPROVED

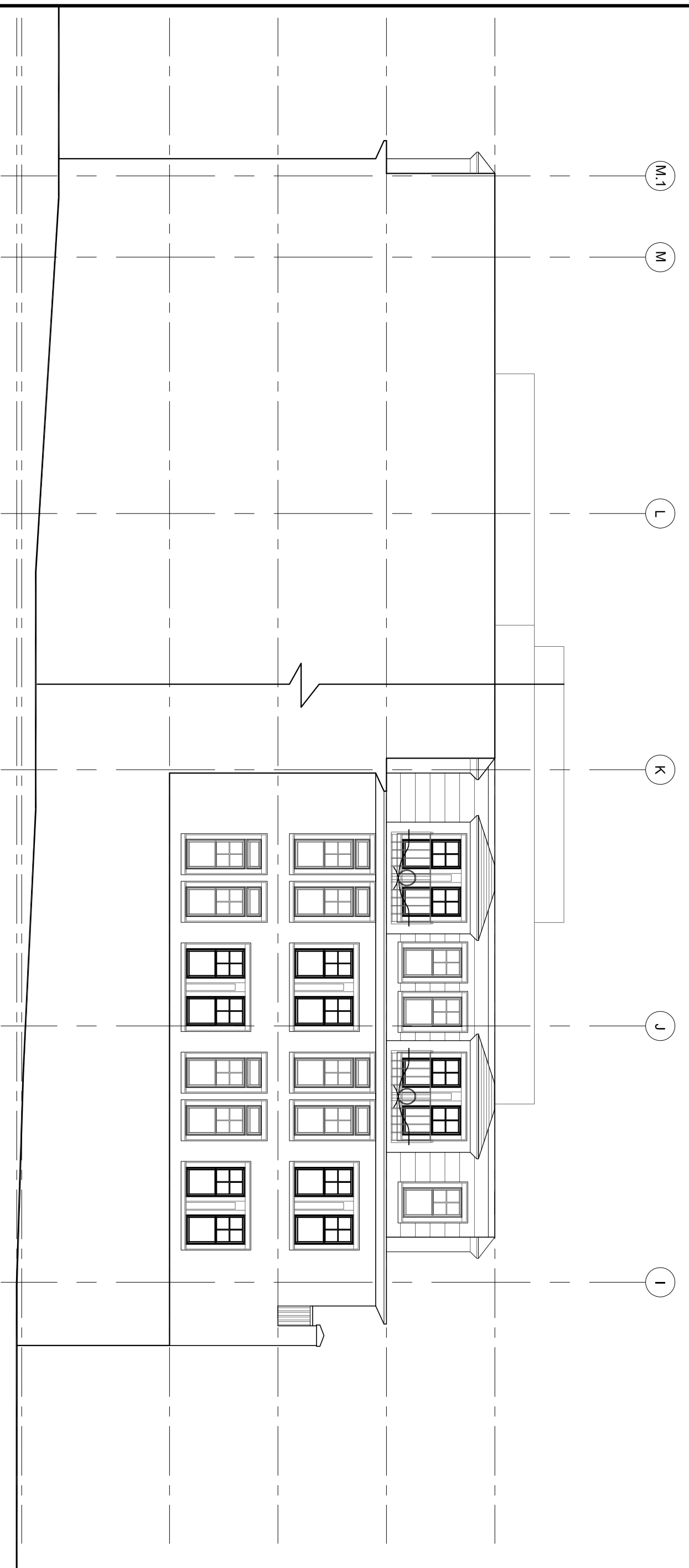


a COURTYARD ELEVATION
SCALE: 3/32"=1'-0"
(VIEWING SOUTH)



3 TRAPELO ROAD ELEVATION
SCALE: 3/32"=1'-0"

PROPOSED REVISIONS



a COURTYARD ELEVATION
SCALE: 3/32"=1'-0"
(VIEWING SOUTH)



3 TRAPELO ROAD ELEVATION
SCALE: 3/32"=1'-0"

SPECIAL PERMIT APPROVED

PETER QUINN ARCHITECTS
ARCHITECTURE
PLANNING
COMMUNITY DESIGN

PETER QUINN ARCHITECTS LLC
289 ELM ST., SUITE 301
SOMERVILLE MA 02144
PH 617-354-9889 FAX 617-896-0280

PROJECT
CUSHING VILLAGE
CUSHING SQUARE
BELMONT, MA

PREPARED FOR
SMITH LEGACY PARTNERS
6 LITTLEFIELD ROAD
ACTON, MA 01720

DRAWING TITLE
THE POMONA BUILDING 2

ELEVATIONS
SCALE AS NOTED

REVISION	DATE

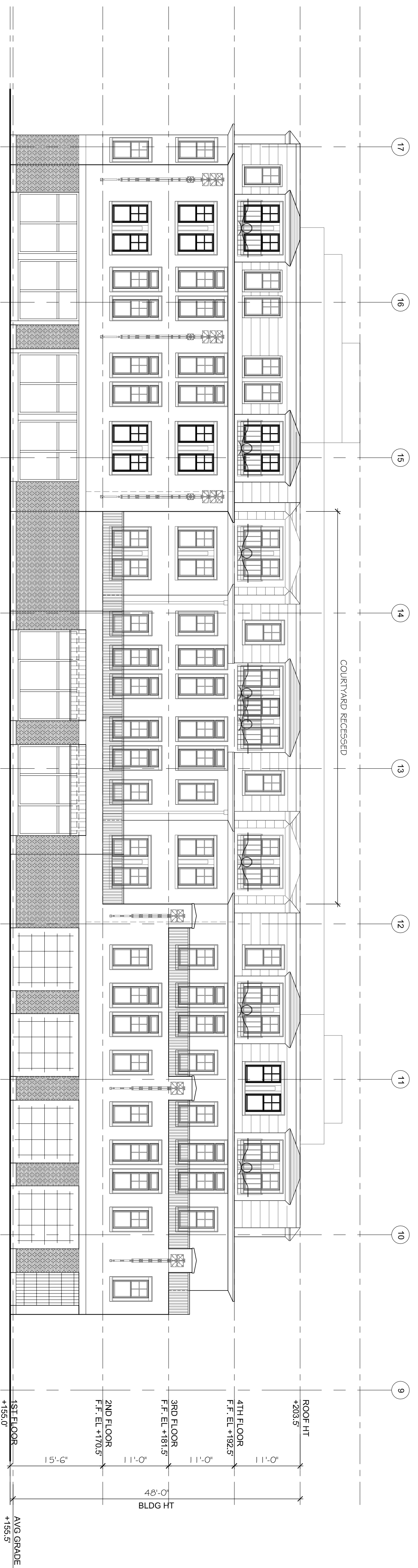
PB MTG	16 DEC 2014
PB	25 NOV 2014
PRESENTATION	18 NOV 2014
UPDATE	23 OCT 2014
SPECIAL PERMIT REVIEW	REVIEWED BY
DRAWN BY	K/SJ/AMF
	PQ

A3.7



4 REAR ELEVATION (PARKING)
SCALE: 3/32"=1'-0"

PROPOSED REVISIONS



4 REAR ELEVATION (PARKING)
SCALE: 3/32"=1'-0"

SPECIAL PERMIT APPROVED

SEAL

CONSULTANT

CONSULTANT

PROJECT
CUSHING VILLAGE
CUSHING SQUARE
BELMONT, MA

PREPARED FOR
SMITH LEGACY PARTNERS
6 LITTLEFIELD ROAD
ACTON, MA 01720

DRAWING TITLE
THE POMONA BUILDING 2

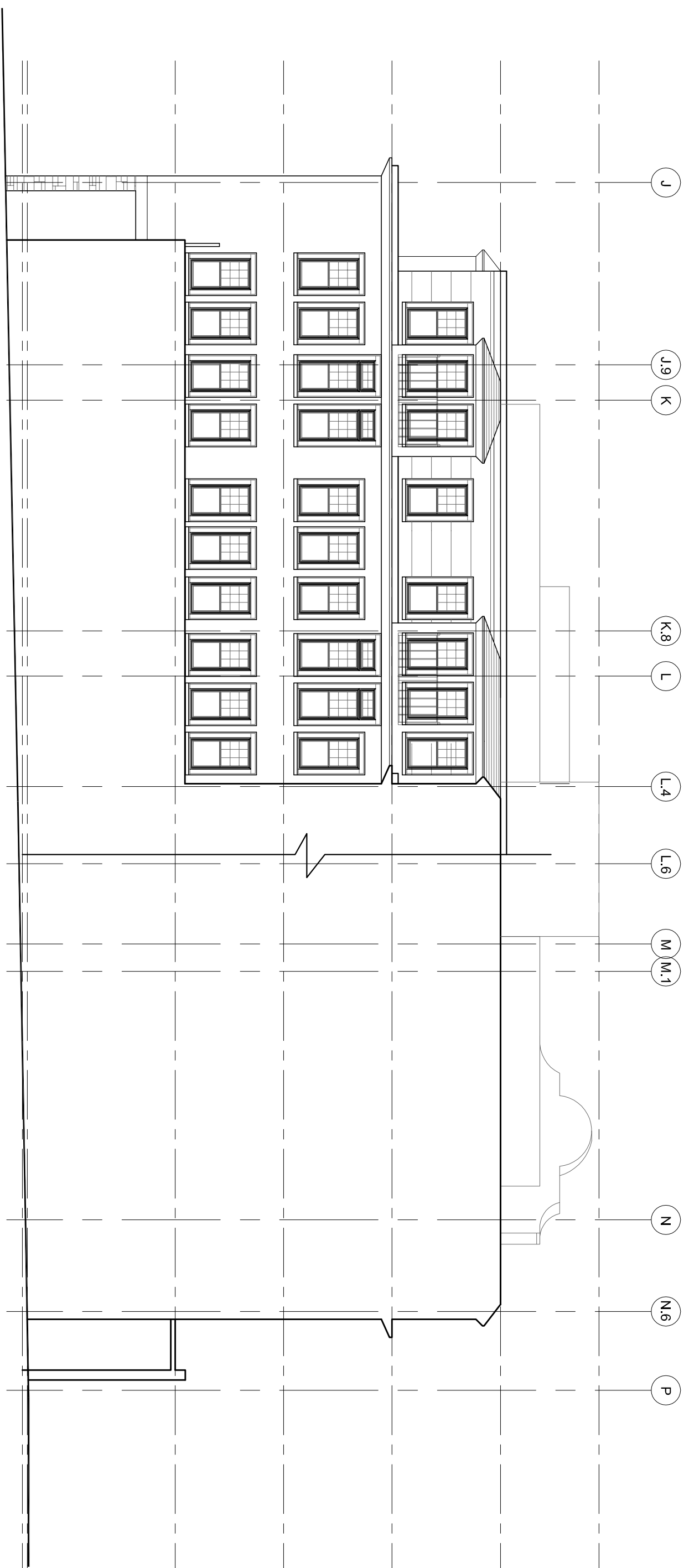
ELEVATIONS

SCALE AS NOTED

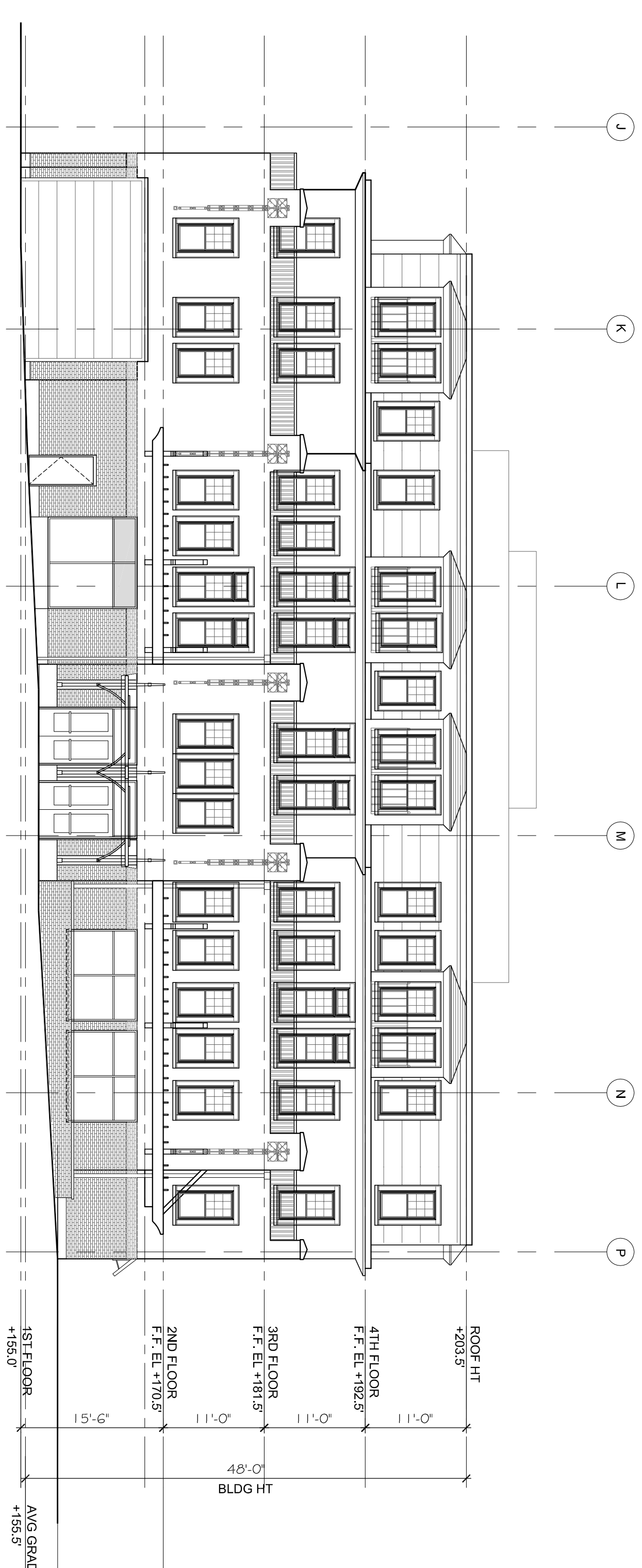
REVISION DATE

REVISION	DATE
PB MTG	16 DEC 2014
PB	PRESENTATION 25 NOV 2014
UPDATE	18 NOV 2014
SPECIAL PERMIT REVIEW	23 OCT 2014
DRAWN BY	REVIEWED BY
KVS/AMF	PQ

SHEET



b COURTYARD ELEVATION
SCALE: 3/32"=1'-0"
(VIEWING NORTH)

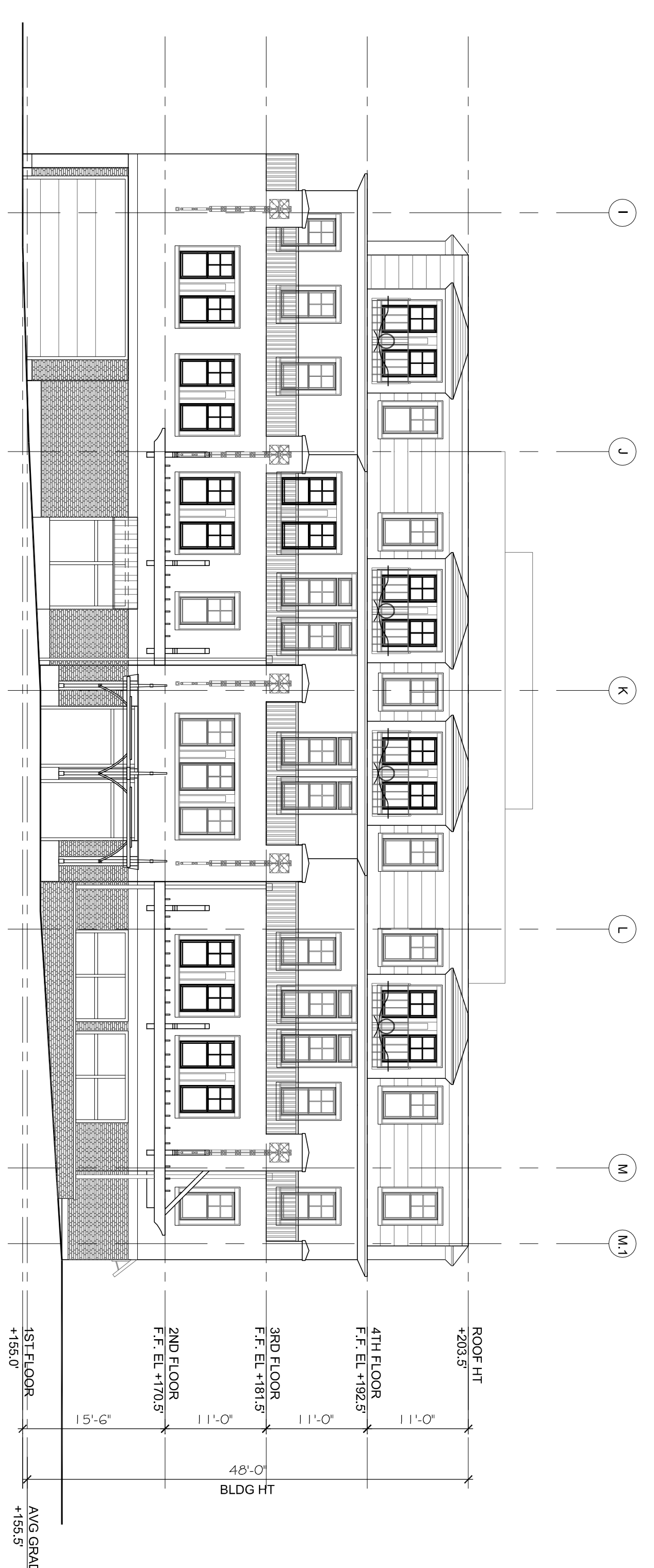


5 HORNE ROAD ELEVATION
SCALE: 3/32"=1'-0"

PROPOSED REVISIONS



b COURTYARD ELEVATION
SCALE: 3/32"=1'-0"
(VIEWING NORTH)



5 HORNE ROAD ELEVATION
SCALE: 3/32"=1'-0"

SPECIAL PERMIT APPROVED

PETER QUINN ARCHITECTS
ARCHITECTURE
PLANNING
COMMUNITY DESIGN
PETER QUINN ARCHITECTS LLC
289 ELM ST., SUITE 301
SOMERVILLE MA 02144
PH 617-354-9889 FAX 617-896-0280

PROJECT
CUSHING VILLAGE
CUSHING SQUARE
BELMONT, MA

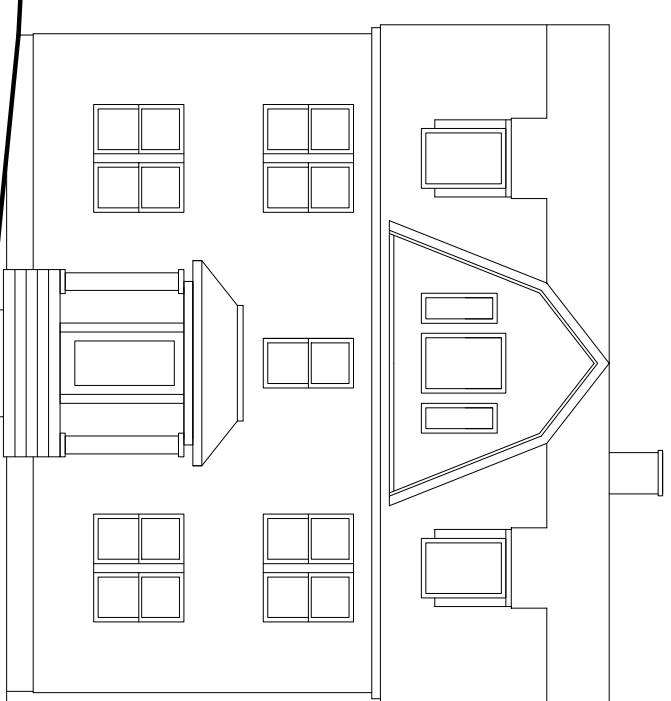
PREPARED FOR
SMITH LEGACY PARTNERS
6 LITTLEFIELD ROAD
ACTON, MA 01720

DRAWING TITLE
THE POMONA BUILDING 2

ELEVATIONS
SCALE AS NOTED

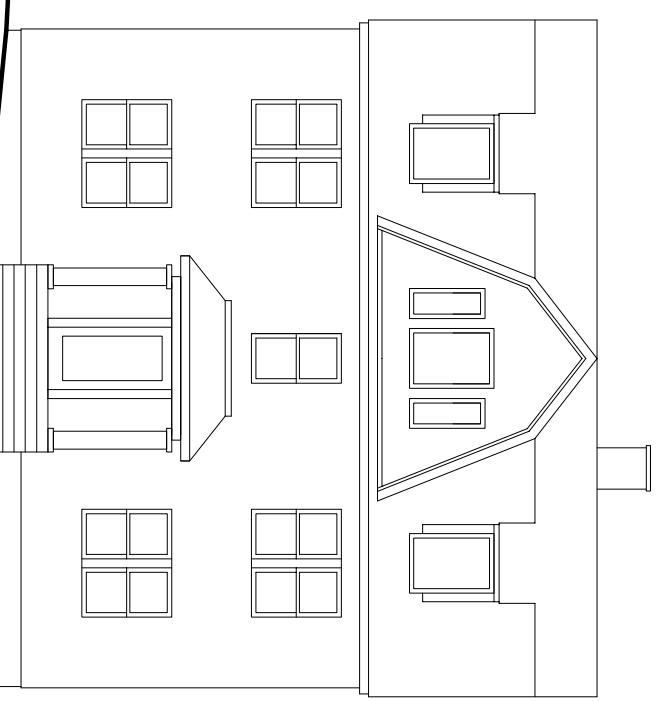
REVISION	DATE
PB MTG	16 DEC 2014
PB	PRESENTATION 25 NOV 2014
UPDATE	18 NOV 2014
SPECIAL PERMIT REVIEW	23 OCT 2014
DRAWN BY	REVIEWED BY
K/SJ/AMF	PQ

A3.9



1 COMMON STREET ELEVATION
SCALE: 3/32"=1'-0"

PROPOSED REVISIONS



1 COMMON STREET ELEVATION
SCALE: 3/32"=1'-0"

SPECIAL PERMIT APPROVED

SPECIAL PERMIT APPROVED

PETER QUINN ARCHITECTS
 ARCHITECTURE PLANNING COMMUNITY DESIGN
 PETER QUINN ARCHITECTS LLC
 289 ELM ST., SUITE 301
 SOMERVILLE MA 02144
 PH 617-354-3889 FAX 617-869-0280

PROJECT
 CUSHING VILLAGE
 CUSHING SQUARE
 BELMONT, MA

PREPARED FOR

 6 LITTLEFIELD ROAD
 ACTON, MA 01720

DRAWING TITLE
THE HYLAND BUILDING 3

ELEVATIONS
 SCALE AS NOTED

REVISION	DATE
PB_MTG	16 DEC 2014
PB	
PRESENTATION	25 NOV 2014
UPDATE	18 NOV 2014
SPECIAL PERMIT REVIEW	23 OCT 2014
DRAWN BY	REVIEWED BY
KVS/AMF	PQ
SHEET	

A3.10

SEAL

CONSULTANT

CONSULTANT

PROJECT
CUSHING VILLAGE
CUSHING SQUARE
BELMONT, MA

PREPARED FOR
SMITH LEGACY PARTNERS
6 LITTLEFIELD ROAD
ACTON, MA 01720

DRAWING TITLE
THE HYLAND BUILDING 3

ELEVATIONS

SCALE AS NOTED

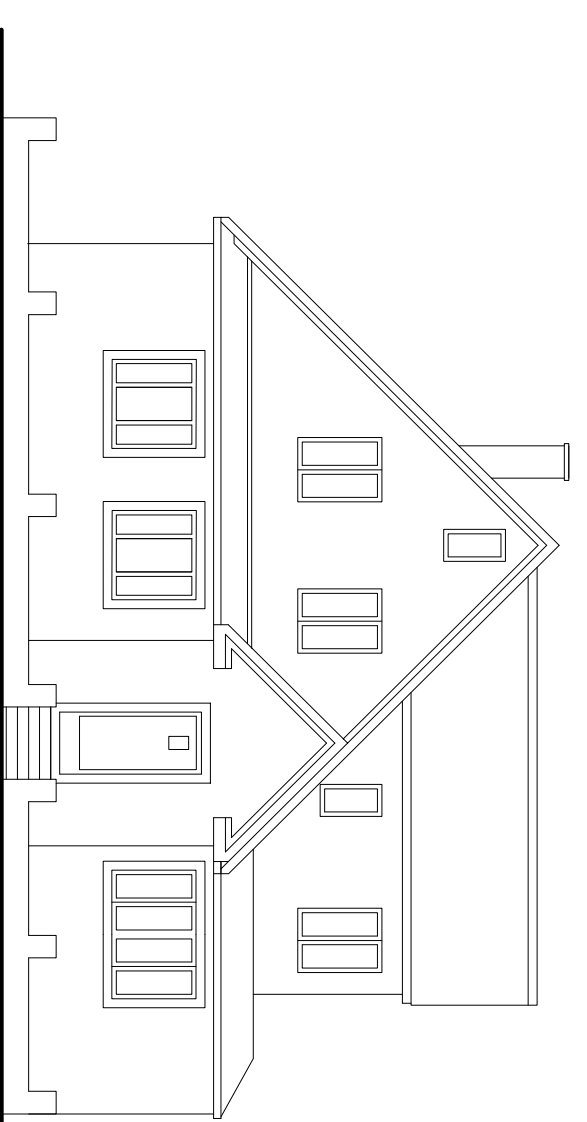
REVISION	DATE
PB. MTG	16 DEC 2014
PB. PRESENTATION	25 NOV 2014
UPDATE	18 NOV 2014
SPECIAL PERMIT REVIEW	23 OCT 2014
DRAWN BY	KVS/AMF
REVIEWED BY	PQ
SHEET	

A3.11



2 BELMONT STREET ELEVATION
SCALE: 3/32"=1'-0"

PROPOSED REVISIONS



2 BELMONT STREET ELEVATION
SCALE: 3/32"=1'-0"

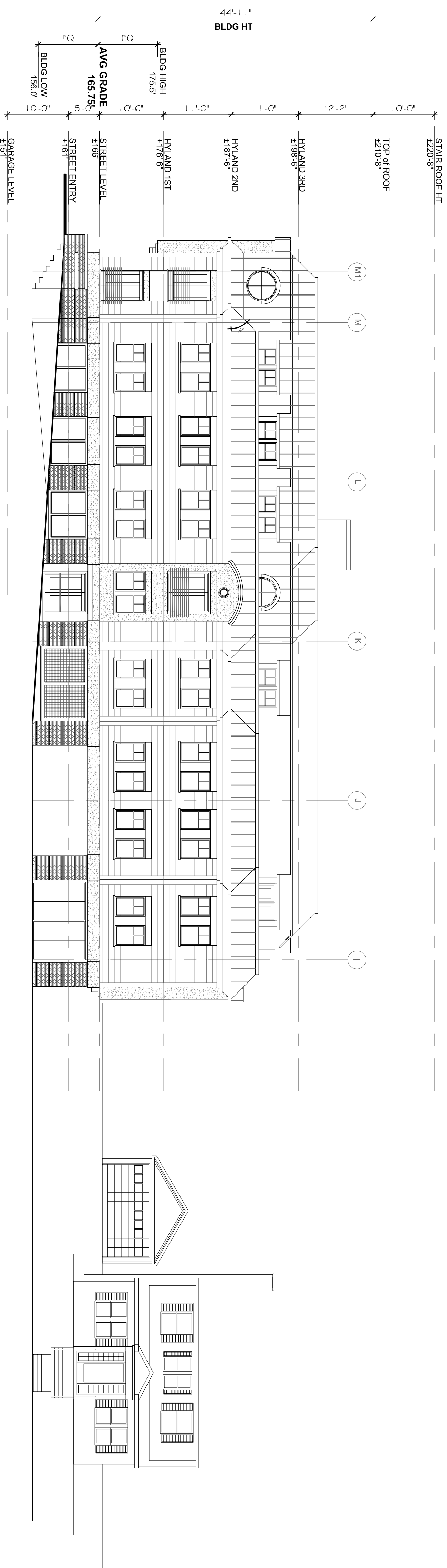
SPECIAL PERMIT APPROVED

SPECIAL PERMIT APPROVED



PROPOSED REVISIONS

4 HORNE ROAD ELEVATION
SCALE: 3/32"=1'-0"



SPECIAL PERMIT APPROVED

4 HORNE ROAD ELEVATION
SCALE: 3/32"=1'-0"

SPECIAL PERMIT APPROVED

PETER QUINN ARCHITECTS
ARCHITECTURE
PLANNING
COMMUNITY DESIGN
PETER QUINN ARCHITECTS LLC
289 ELM ST., SUITE 301
SOMERVILLE MA 02144
PH 617-354-3889 FAX 617-899-0280

PROJECT
CUSHING VILLAGE
CUSHING SQUARE
BELMONT, MA

PREPARED FOR
SMITH LEGACY PARTNERS
6 LITTLEFIELD ROAD
ACTON, MA 01720

DRAWING TITLE
THE HYLAND BUILDING 3

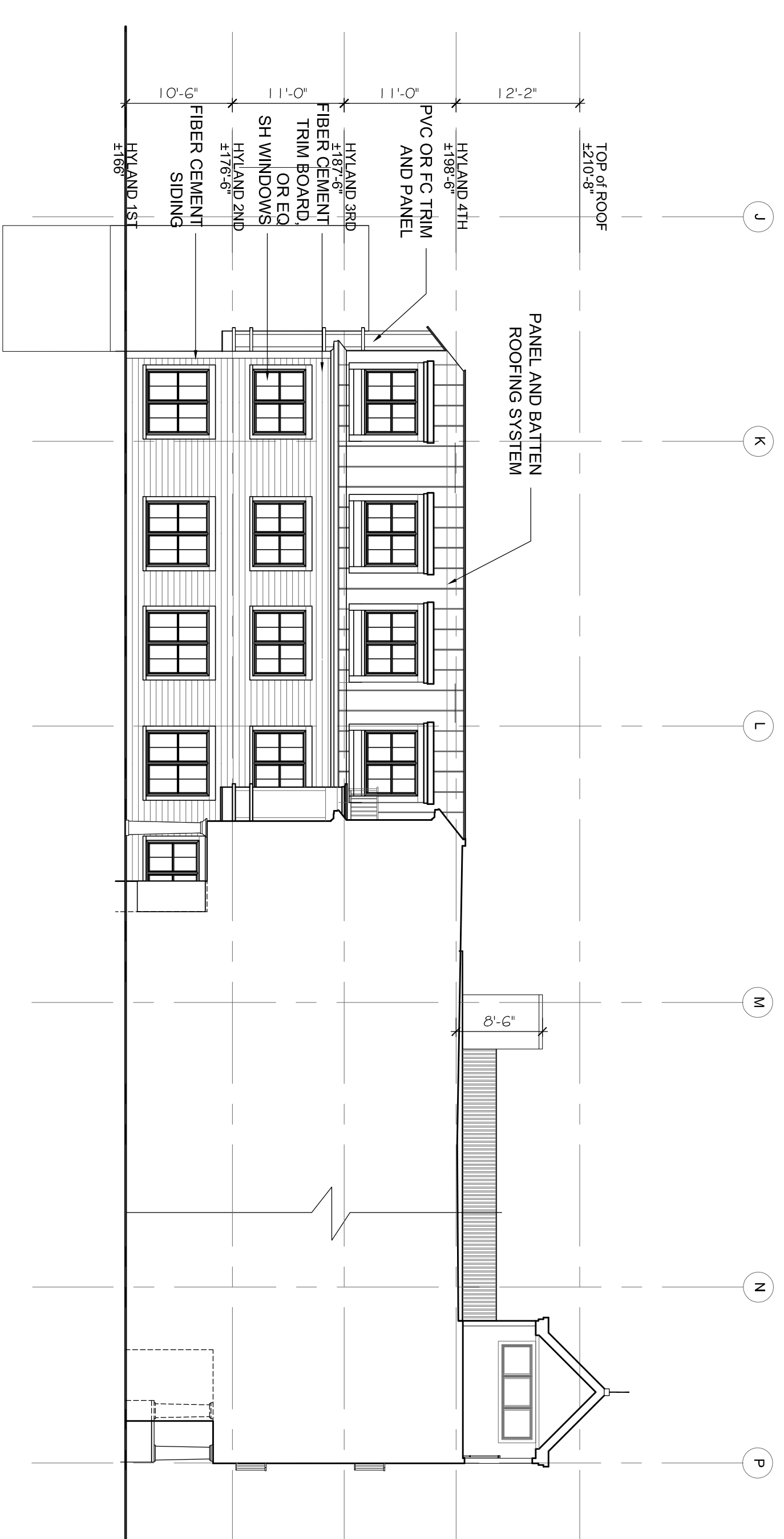
ELEVATIONS	SCALE AS NOTED
REVISION	DATE
PB MTG	16 DEC 2014
PB	25 NOV 2014
PRESENTATION	25 NOV 2014
UPDATE	18 NOV 2014
SPECIAL PERMIT REVIEW	23 OCT 2014
DRAWN BY	REVIEWED BY
KVS/AMF	PQ
SHEET	

A3.13

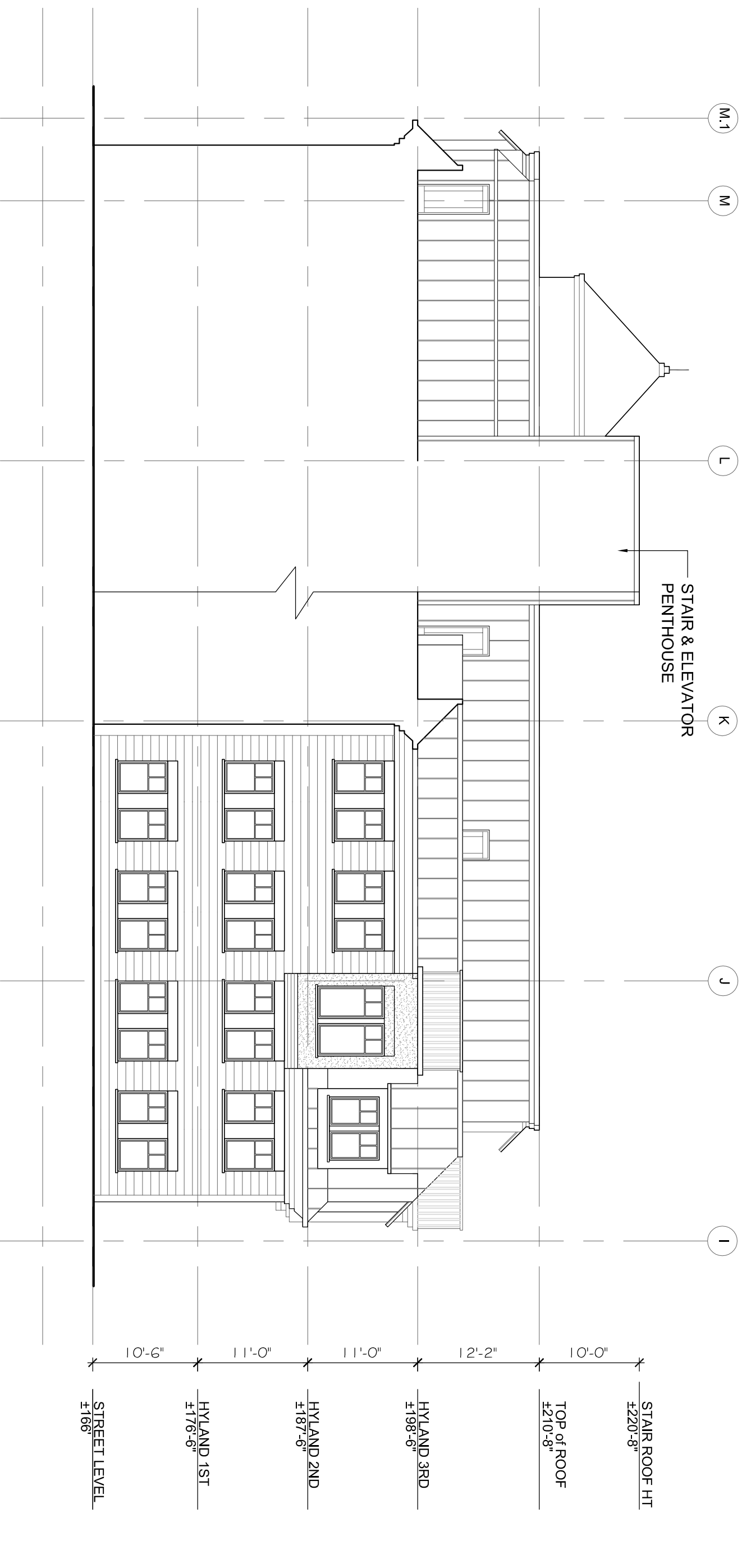


a COURTYARD ELEVATION
SCALE: 3/32"=1'-0"

PROPOSED REVISIONS

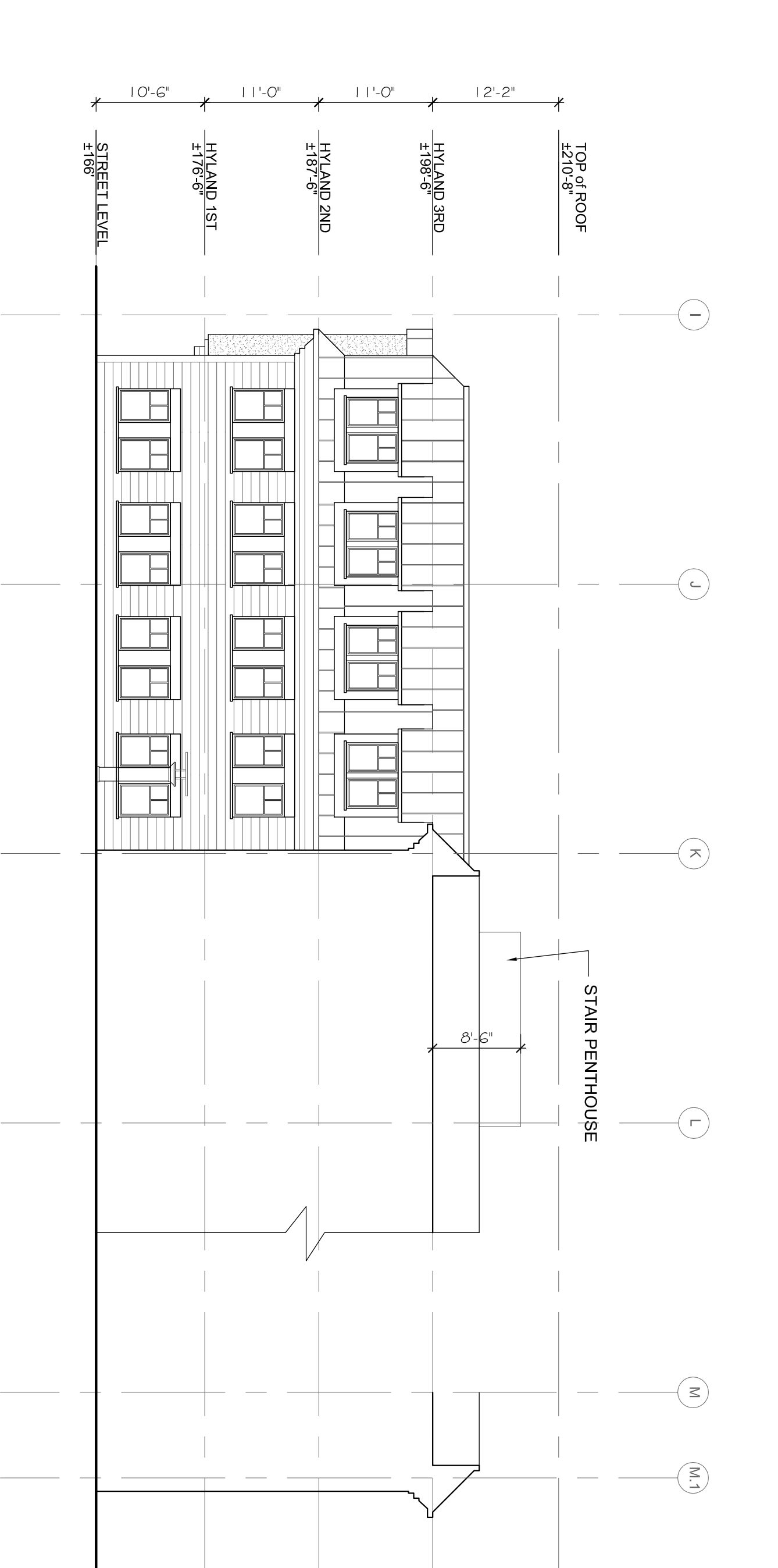


b COURTYARD ELEVATION
SCALE: 3/32"=1'-0"



a COURTYARD ELEVATION
SCALE: 3/32"=1'-0"
(VIEWING SOUTH)

SPECIAL PERMIT APPROVED



b COURTYARD ELEVATION
SCALE: 3/32"=1'-0"
(VIEWING NORTH)

SCALE AS NOTED

REVISION	DATE

PB MTG	16 DEC 2014
PB	
PRESENTATION	25 NOV 2014
UPDATE	18 NOV 2014
SPECIAL PERMIT REVIEW	23 OCT 2014
DRAWN BY	KVS/AMF
REVIEWED BY	PQ
SHEET	