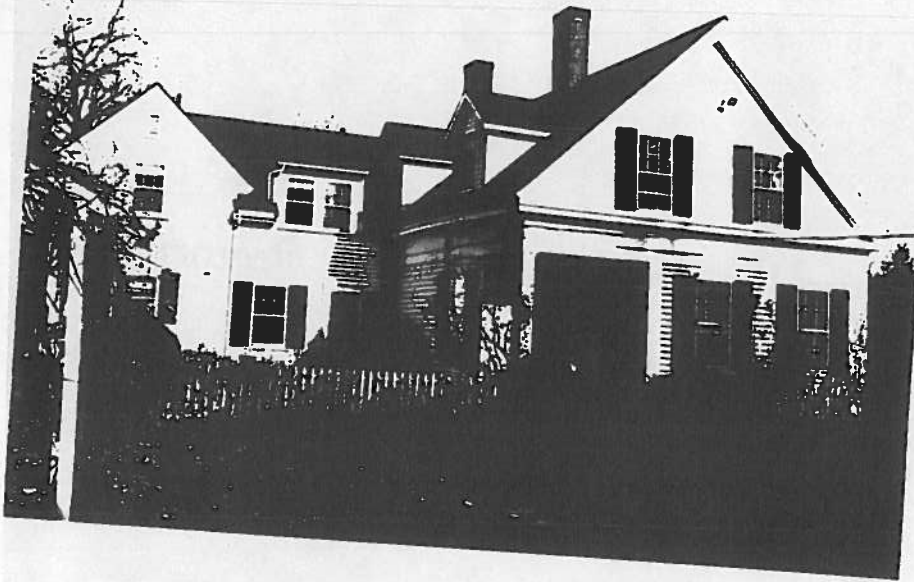


FORM B - BUILDING

MASSACHUSETTS HISTORICAL COMMISSION
294 WASHINGTON STREET, BOSTON, MA 02108

AREA Y ²	FORM NO. 63-1
------------------------	------------------



Belmont

ss 741 Concord Avenue

ric Name Chenery Farm House

Present Private residence

iginal Farm house

DESCRIPTION:

c 1870

Source County Atlas of Middlesex, M.

Style Greek Revival. 1875

Architect _____

Exterior wall fabric Clapboard

Outbuildings Later garage

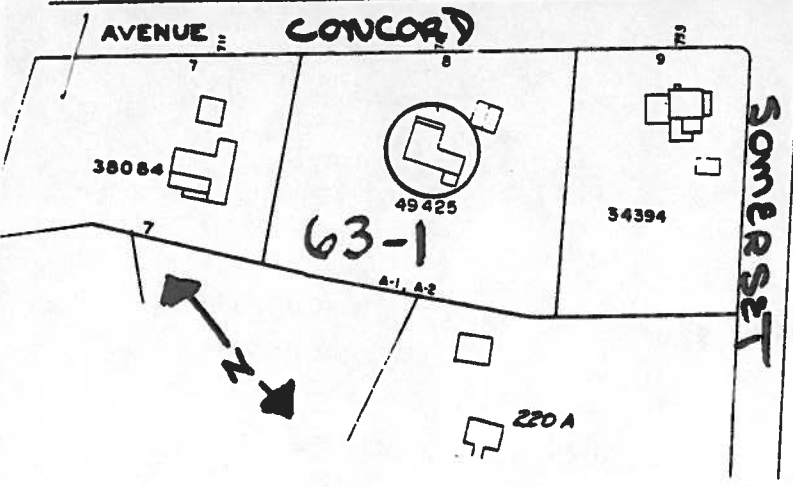
Major alterations (with dates) 1946 and 1950 alterations

Moved _____ Date _____

Approx. acreage 2 acres

Setting well-landscaped yard larger than its neighbors and set back from Concord Avenue.

SKETCH MAP



Recorded by Kay Flynn

Organization Boston University

Date October, 1982

(Staple additional sheets here)

ARCHITECTURAL SIGNIFICANCE (Describe important architectural features and evaluate in terms of other buildings within the community.)

The 1½ story side entrance Greek Revival Farmhouse is one of the few remaining in Belmont. The basic temple-form block is intact with a side entrance Doric columned porch. The entablature and roofline are wide and heavy, which produced a pediment at the gable end. Transom and sidelights of simple square panes of glass surround the entrance on the porch. The wing was probably one floor with a single-cell hipped roof el. The second floor with its double window and the facing gable-end wing was added at a later date.

HISTORICAL SIGNIFICANCE (Explain the role owners played in local or state history and how the building relates to the development of the community.)

Historically significant is the fact that this house was the farm house used by W. W. Chenery.

(See Highland Stock Farm Area Form Inventory #)

BIBLIOGRAPHY and/or REFERENCES (name of publication, author, date and publisher)