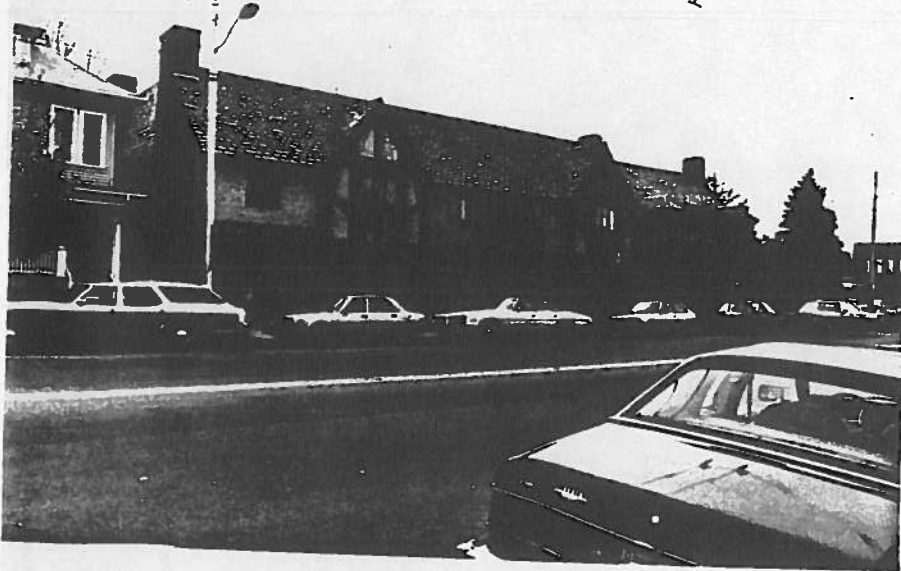


FORM B - BUILDING

Area <u>C</u>	Form no. <u>5-1</u>
------------------	------------------------

MASSACHUSETTS HISTORICAL COMMISSION
294 Washington Street, Boston, MA 02108



Belmont

72-86 Trapelo Road

The Winters Block

Commercial and Office

Same

ship: Private individual
Private organization

Public

Flora Winters

Original owner Percy R. Winters

OPTION:
72-78: 1929
80-86: 1925

Source Card File--Town Engineer's Office

Style Tudor Revival

Architect George Ernest Robinson

Exterior wall fabric Stucco/ half timber

Outbuildings _____

Major alterations (with dates) _____

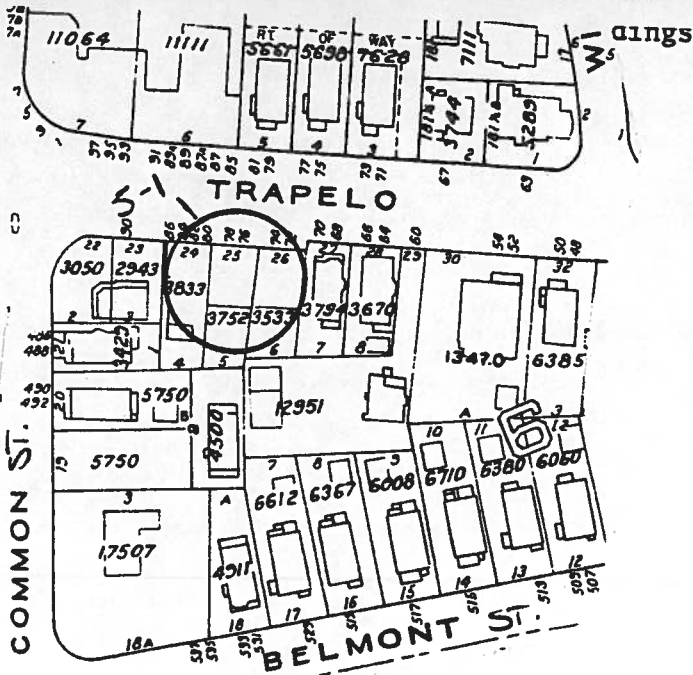
1935: Carrara glass storefront

remodel of 1925 section

Moved No Date _____

Approx. acreage 11,118 sq. ft.

Setting fronted by pavement and a series of young street trees one lot removed from busy intersection of Common St., Trapelo Rd., and Cushing Ave. (Cushing Square)



Recorded by Marcia M. Cini

Organization Boston University

Date September 1982

(Staple additional sheets here)

ARCHITECTURAL SIGNIFICANCE (describe important architectural features and evaluate in terms of other buildings within community)

The architectural significance of this and several other nearby commercial blocks (See Forms 6-7/2-1) lies in the clear correspondence between their style or imagery, in this case Tudor Revival, and that chosen for nearby contemporary residential building. Immediately recognizable hallmarks of the style include peaked gables facing the street façade, half timbering, diamond paned windows and a slate roof. A clock tower, designed to top the juncture of the 1925 and 1929 sections, was never built for financial reasons related to the stock market crash of 1929. Unlike some other less respected commercial building types (i.e. taxpayers), this block continues to survive in good condition. Its ultimate fate does, however, depend on the successful resolution of the general threats to the viability of Cushing Square itself (See Area Form C).

HISTORICAL SIGNIFICANCE (explain the role owners played in local or state history and how the building relates to the development of the community)

The historical significance of this block, built by a prominent local family, lies in its continued survival as a clear and handsome expression of the type of commercial establishment which was built to serve the needs of a rapidly growing early 20th century residential neighborhood. Several original tenants still occupy the building. It is also important to note that the 1929 section was built to include a large second floor social hall which played a significant role as a neighborhood gathering place. This space has since been remodelled for office use.

BIBLIOGRAPHY and/or REFERENCES

- Betts, Richard (ed.). Belmont Historical Society Newsletter, Vol. XVII, No. 1. September, 1982.
Cushing Square File, Belmont Room, Belmont Public Library.
Winter, Paul, Building Department. Interview, August, 1982.