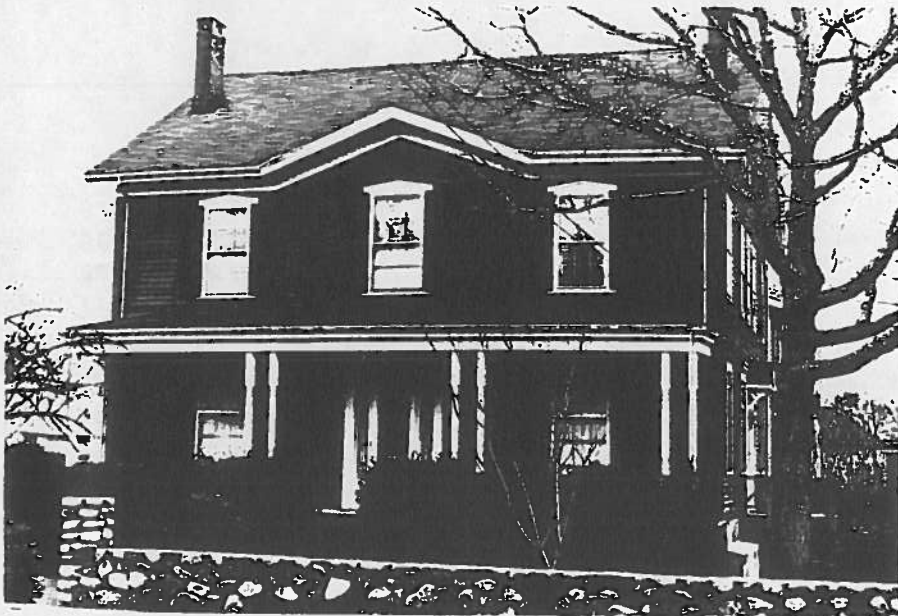


FORM B - BUILDING

AREA	FORM NO.
Z ³	9-6

MASSACHUSETTS HISTORICAL COMMISSION
294 WASHINGTON STREET, BOSTON, MA 02108



Belmont

Address 468-470 School Street

Historic Name Henry Richardson House

Present residence

Original residence

Description:

pre-1853

Source 1853 Frost Map, Engineering Department records

Style Greek Revival/Italianate

Architect

Exterior wall fabric clapboard

Outbuildings none

Major alterations (with dates)

rear wing added to effect another

apartment -

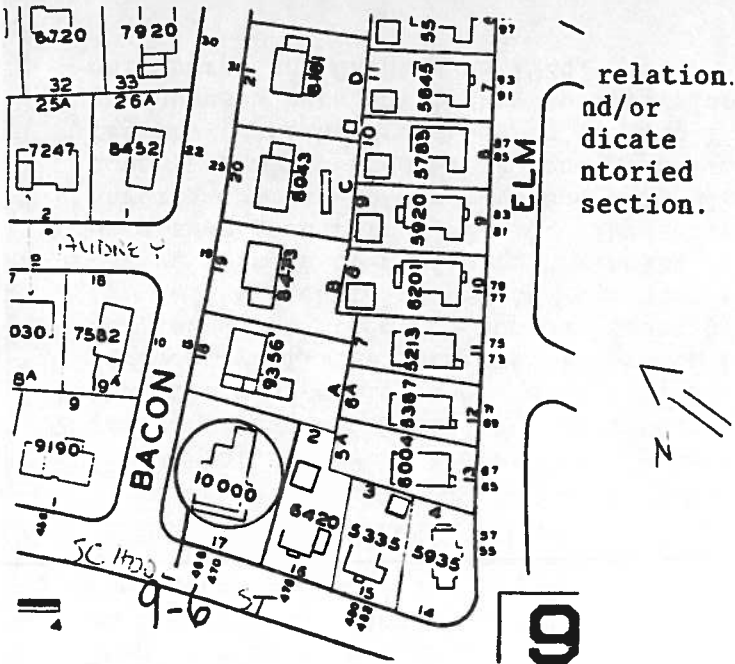
Moved from Fresh Pond Date 1891

Approx. acreage 10,000 sq. ft.

Setting well set back on corner lot,

many trees and shrubs screen from

street, surrounded by low stone wall.



relation.
and/or
indicate
storied
section.

Recorded by Frankie Lieberman

Boston University

Organization Preservation Studies

Date 28 December 1982

(Staple additional sheets here)

ARCHITECTURAL SIGNIFICANCE (Describe important architectural features and evaluate in terms of other buildings within the community.)

This Greek Revival/Italiniate style farmhouse is unique in this section of Belmont. Although it has been moved and added to, the facade and porch are intact. The stylistic elements of pedimented gable roof, triangular shaped window caps and parlor length ground floor windows are Italiniate while the square transom and side lights denote the Greek Revival. The latter feature is a common one and is found not only on comparable structures (Cf. the Choate Estate (X³-10-3) but also on the 20th C. Colonial Revival houses which surround 468-470 School St. That is has been converted to a two-family house is in keeping with land use in the areas to the south (Skahan, Y³, and Harvard Lawn, T³).

HISTORICAL SIGNIFICANCE (Explain the role owners played in local or state history and how the building relates to the development of the community.)

This house is representative of Belmont's change in the late 19th C. After Cambridge annexed Fresh Pond in 1880 and began clearing the surrounding land so that the pond could become a reservoir, houses were moved to new sites -- mostly on Strawberry Hill -- but this Richardson house was moved back into Belmont. A site³ was found for it on the School Street boundary of the J.H. Richardson farm (Area Y³).

The Richardson family were very successful market gardeners and played an active role in town affairs beginning in 1630 when the first Richardson settled in Watertown (see Form E⁴-21-1). They acquired the farm land between School and Grove Streets sometime after 1853 and were already operating numerous greenhouses when the house was moved from Fresh Pond.³ The farm was steadily eroded by sales to neighboring farmers, Hittinger and Skahan (Z³ and Y³) but the Richardsons continued to operate greenhouses here until they sold the land for development in conjunction with their neighbors, the Skahans in 1926.

BIBLIOGRAPHY and/or REFERENCES (name of publication, author, date and publisher)

- Betts, Richard, The Streets of Belmont . . . p.232-235
- Frost, 1853 Map
- Beers, 1875 Atlas
- Stadley, 1898 Atlas
- Sanborn, 1922 Atlas
- Northwest Cambridge Report