

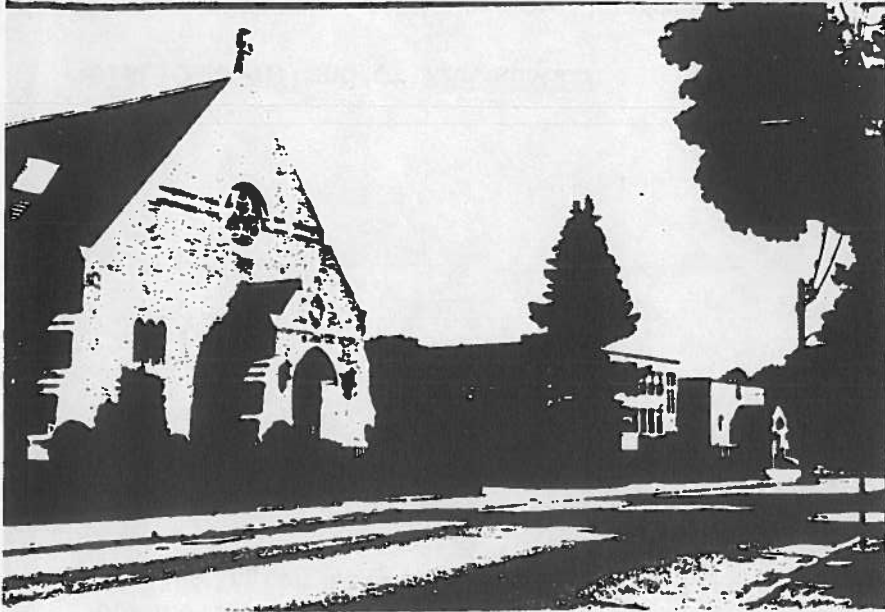
FORM A - AREA

160
 MASSACHUSETTS HISTORICAL COMMISSION
 294 Washington Street, Boston, MA. 02108

Form numbers in this area

Area letter

F²a



132-160 Lexington St.

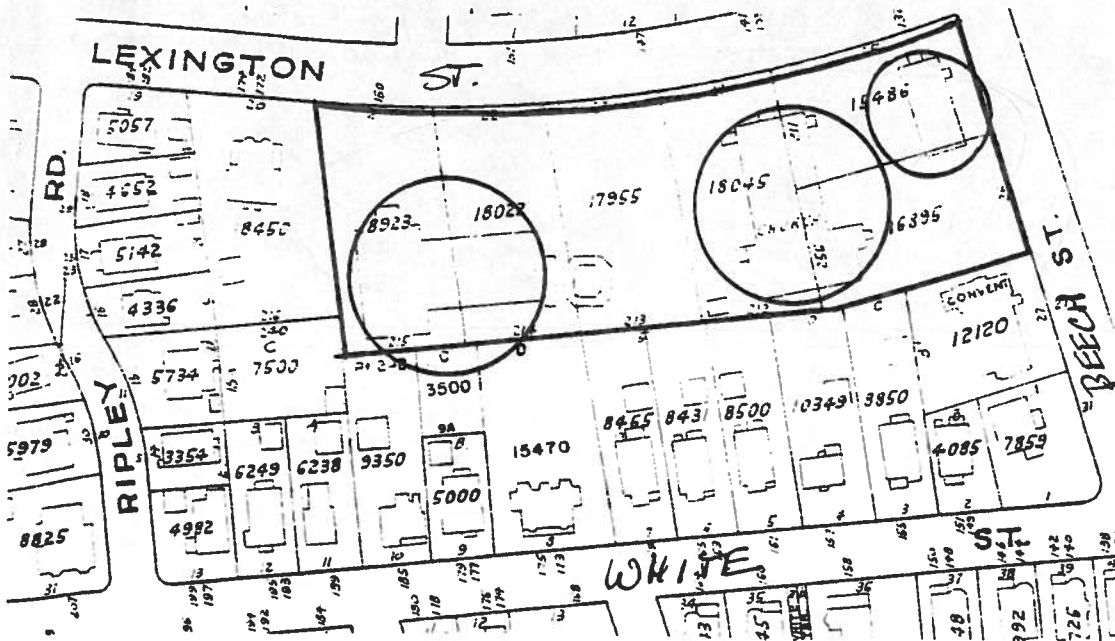
Belmont

area (if any)

St. Luke's Church & School

date or period 1926 - 1951

Sketch map. Draw a general map of the area indicating properties within it. Number each property for which individual inventory forms have been completed. Label streets (including route numbers, if any) and indicate north. (Attach a separate sheet if space here is not sufficient)



Recorded by Judy Williams

Organization Boston University

Date November, 1982

ARCHITECTURAL SIGNIFICANCE of area. (Describe physical setting, general character, and architecturally significant structures).

The Lexington Street St. Luke's complex was built in different stages but is unified by the use of yellow-colored brick and a similarity in scale. The church features a gable-roofed sanctuary with gable-end entry vestibule and a rear tower. Gothic elements include buttressing at corners and between bays, and the use of pointed arches in windows and doors. The rear tower is accented by a thin spire at its top.

The school, convent and parish house are two-story yellow brick buildings which are given a utilitarian treatment. The school entrances reflect the ecclesiastical design of the church, however. The Parish House was originally built as a single-family residence in 1923.

HISTORICAL SIGNIFICANCE of area. (Explain development of area, what caused it, and how it affected community; be specific).

St. Luke's Church was established to serve the Waverley members of St. Joseph's parish on Common Street. The Church was set apart as an independent parish in 1919, with early services being held in the chapel which had been constructed four years earlier as a mission of St. Joseph's. This Chapel, which had been located on Beech Street, is no longer standing. The existing St. Luke's Church building was begun in 1926, with the upper portion being completed in 1933. As the church membership increased, the complex grew to include a school building, opened in 1940, and a convent on Beech Street, built in 1951. The Church acquired the Lexington Street Parish House in later years.

BIBLIOGRAPHY and/or REFERENCES

Richard B. Betts, Interview, November, 1982.

Building Permits, 1926, 1933, 1939.

Belmont Citizen, "St. Luke's Parish to Mark 50th Anniversary with Ball." October 9, 1969.