



NEIGHBOR'S VIEW WITHOUT NEW SCREENING

SLEEPY HOLLOW ROAD - 178 MARSH STREET
BELMONT, MA 02478

27 MARCH 2017

RD 2834

Rojas Design, Inc
Architecture/BIM . Interior Design
Landscape Architecture
(617)720-4100
www.rojasdesigninc.com



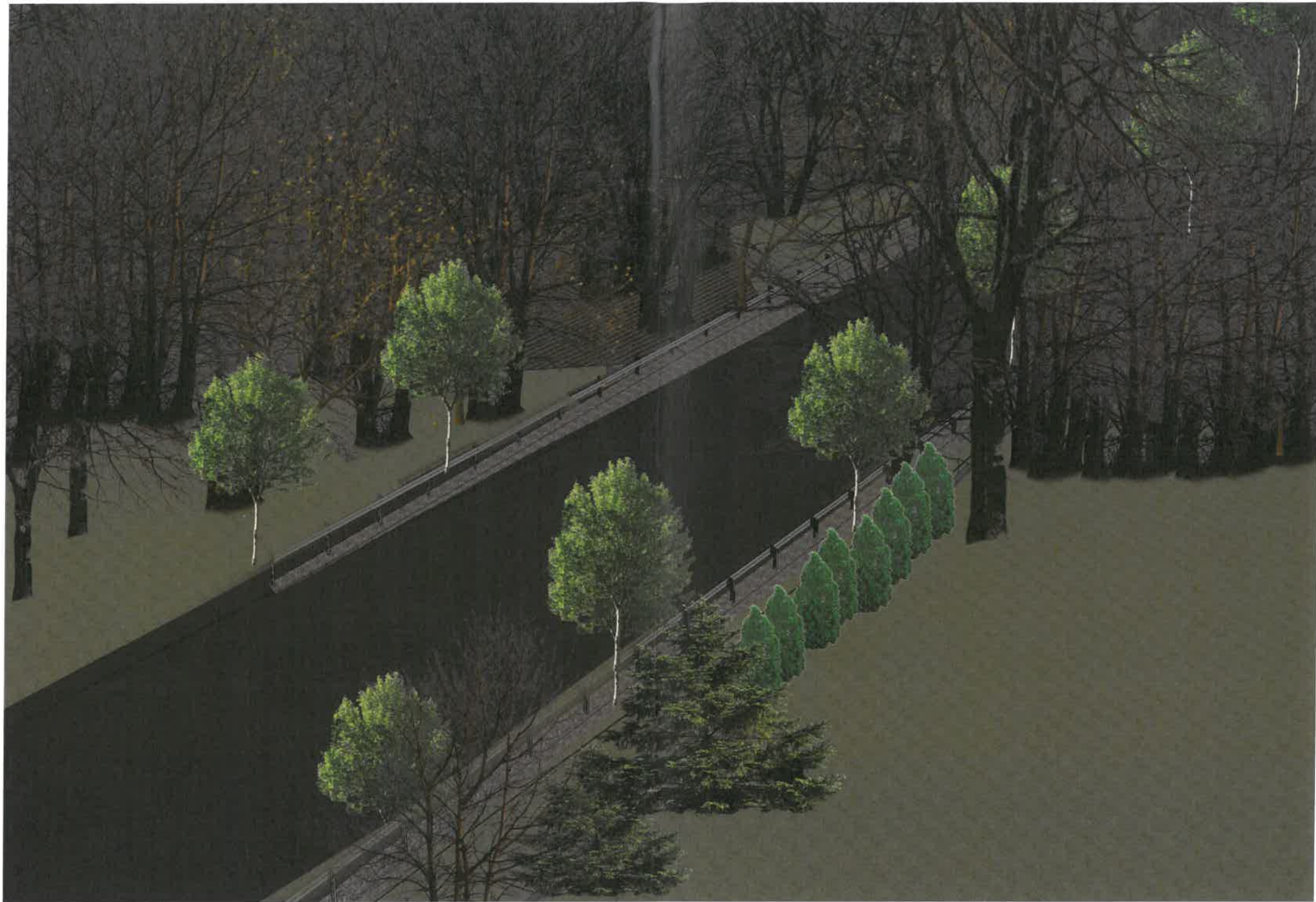
NEIGHBOR'S VIEW WITH NEW SCREENING

SLEEPY HOLLOW ROAD - 178 MARSH STREET
BELMONT, MA 02478

27 MARCH 2017

RD 2834

Rojas Design, Inc
Architecture/BIM . Interior Design
Landscape Architecture
(617)720-4100
www.rojasdesigninc.com



AERIAL VIEW

SLEEPY HOLLOW ROAD - 178 MARSH STREET
BELMONT, MA 02478

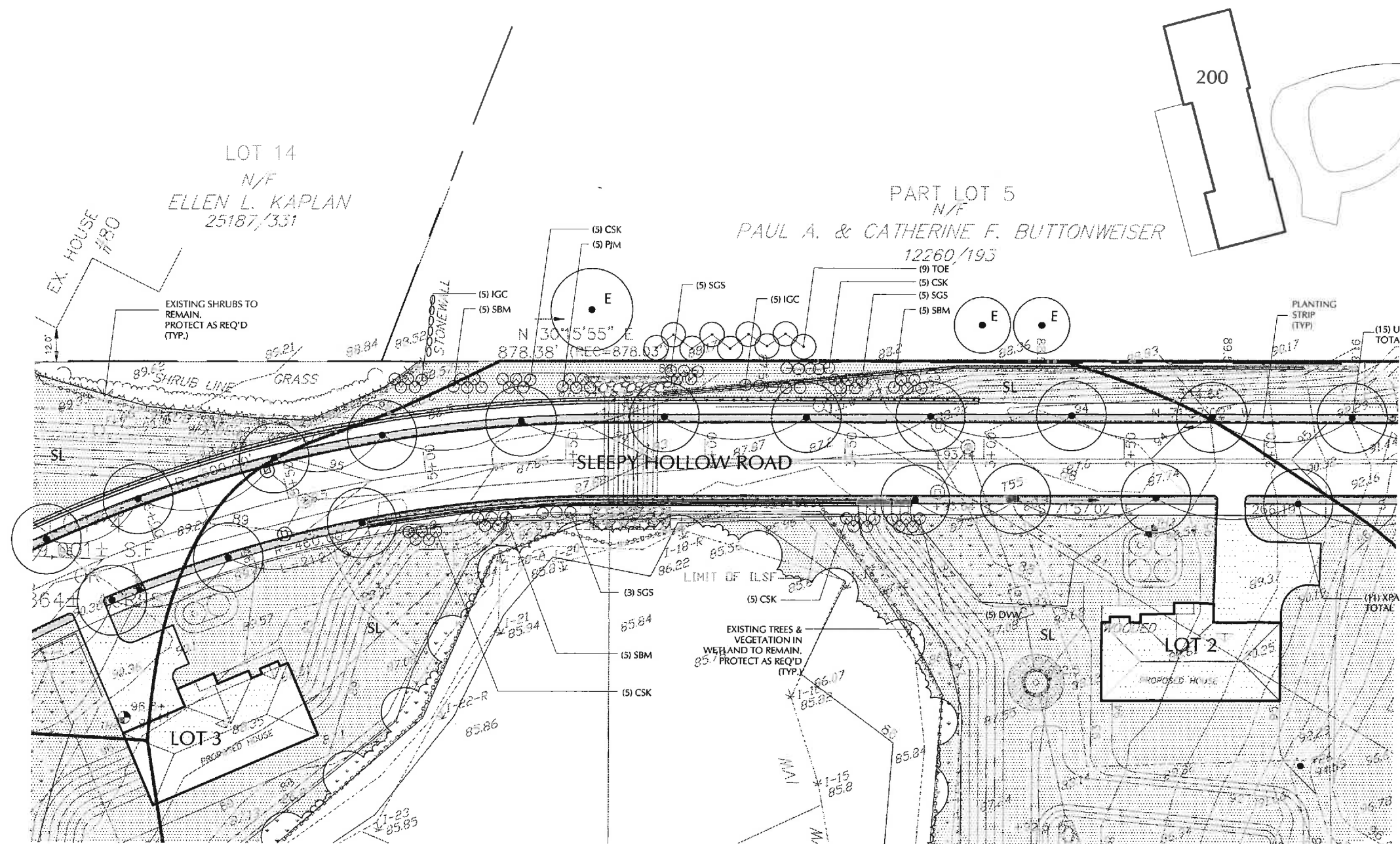
27 MARCH 2017

RD 2834

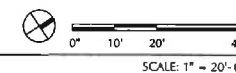
Rojas Design, Inc
Architecture/BIM . Interior Design
Landscape Architecture
(617)720-4100
www.rojasdesigninc.com

SLEEPY HOLLOW ROAD

178 MARSH STREET
BELMONT, MA 02478



1 PLANTING PLAN - PARTIAL



No.	Revisions	Date

Job: 2834
Date: 03/27/2017
Scale: AS NOTED
Drawn: YK
Checked: ATR

PLANTING PLAN - PARTIAL

Rojas Design, Inc.
Architecture
1500 Soldiers Field Road
BIM
Brighton
Interior Design
Massachusetts, 02135
Landscape Architecture
T - 671.720.4100



This drawing and the details on it, as an instrument of service, is property of Rojas Design, Architects, Interior Architects, & Landscape Architects, and may be used only for the specific project and shall not be loaned, copied or reproduced in any form without the expressed written consent of Rojas Design, Inc.

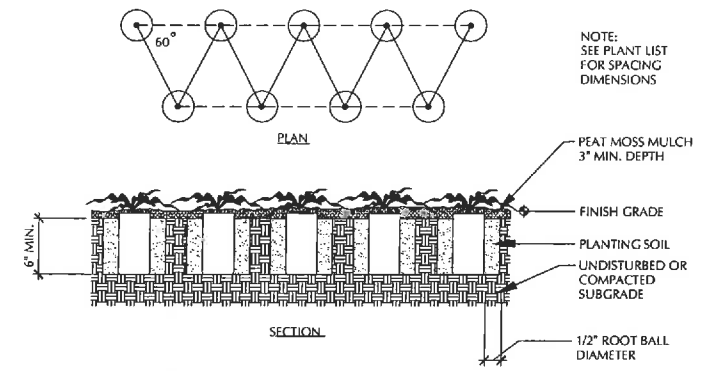
Copyright © 2017 Rojas Design, Inc. All Rights Reserved

L-01

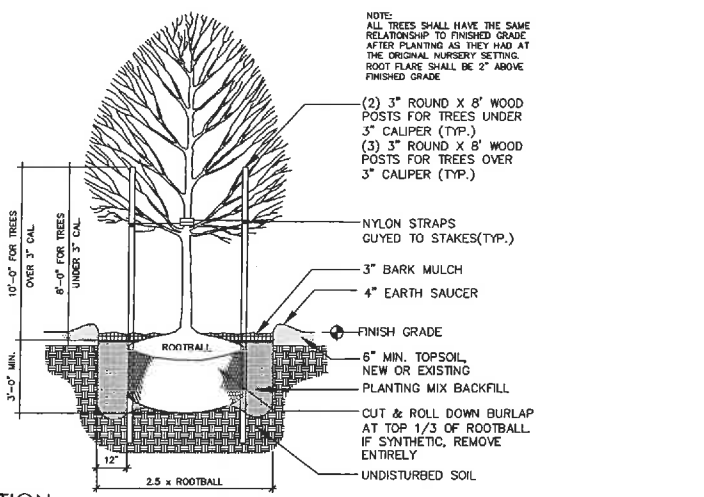
SLEEPY HOLLOW ROAD

178 MARSH STREET
BELMONT, MA 02478

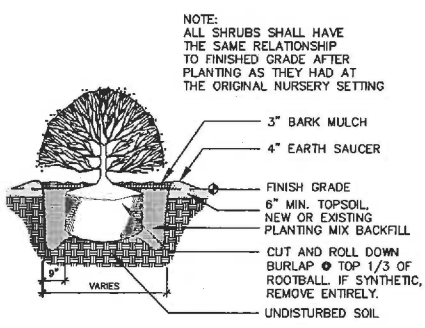
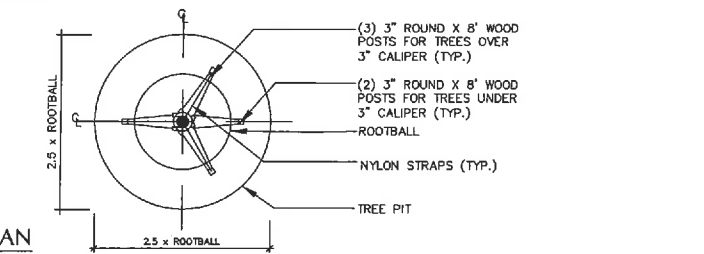
PLANT LIST - SLEEPY HOLLOW ROAD						
SYMB.	QTY.	BOTANICAL NAME	COMMON NAME	SIZE	CONDITION	REMARKS
TREES						
E	3+	EXISTING TREE	EXISTING TREE	VARIOUS	IN PLACE	PRUNE AS SPECIFIED & DIRECTED BY L.A. PROTECT AS REQUIRED
CDK	5	CLEDASTRIS KENTUCKEA	YELLOWWOOD	3"-3 1/2" CAL.	B & B	MATCHED WITH DENSE CROWNS - AT CUL-DE-SAC
ULA	15	ULMUS AMERICANA 'VALLEY FORGE'	AMERICAN VALLEY FORGE ELM	3"-3 1/2" CAL.	B & B	DISEASE RESISTANT AMERICAN VALLEY FORGE - MATCHED
XPA	11	X PLATANUS ACERFOLIA	LONDON PLANE TREE	3"-3 1/2" CAL.	B & B	PRUNE BRANCHING TO 6' ABOVE FINISHED GRADE
CSK	20	CORNUS SERICEA 'KELSEY'	KELSEY DWARF RED OSIER DOGWOOD	2'-0" - 2'-6" TALL	B & B	SPACING AT 2'-0" O.C.
IGC	10	ILEX GLABRA 'COMPACTA'	COMPACT INKBERRY	2'-6" - 3'-0" TALL	B & B	SPACING AT 2'-6" O.C.
PJM	5	RHODODENDRON 'PJM'	RHODODENDRON 'PJM'	2'-6" - 3'-0" SPREAD	B & B	SPACING AT 2'-6" O.C.
SGS	15	MISCANTHUS SINENSIS 'GRACILLIMUS'	SILVER OR EULAIUS GRASS	4'-0" - 7'-0" TALL	B & B	UPRIGHT FORM WITH FEATHERY CREAM FLOWERS - BLOOMS IN LATE SEPTEMBER
SBM	15	SPIRAEA BUMALDA 'ANTHONY WATERER'	SPIREA BUMALDA 'ANTHONY WATERER'	2'-6" - 3'-0" TALL	B & B	SPACING AT 2'-6" O.C.
DVW	5	RHODODENDRON 'DELAWARE VALLEY WHITE'	'DELAWARE VALLEY WHITE' AZALEA	2'-6" - 3'-0" TALL	B & B	SPACING AT 2'-0" - 2'-6" O.C.
TOE	9	THUJA OCCIDENTALIS ELEGANTISSIMA	GOLDTIP ARBORVITAE	5'-6" TALL	B & B	SPACING AT 5'-0" O.C.
GC	1/4 SY	SEEDED LAWN	SEEDED LAWN			SLICE SEEDING OR HYDROSEEDING FOR FULL COVERAGE OF NOTED AREAS
GC	OPJ	OPHIPOGON JAPONICUS	MONDO GRASS	2" NU-POTS	2 YEAR OLD PLANTS	SPACING AT 8" O.C. STAGGERED
GC	LSP-V	LIRIOPE SPICATA VARIEGATED	CREeping LIRIOPE - VARIEGATED	2" NU-POTS	2 YEAR OLD PLANTS	SPACING AT 8" O.C. STAGGERED
GC	PAT	PACHYSANDRA TERMINALIS	PACHYSANDRA	2" NU-POTS	2 YEAR OLD PLANTS	SPACING AT 8" O.C. STAGGERED



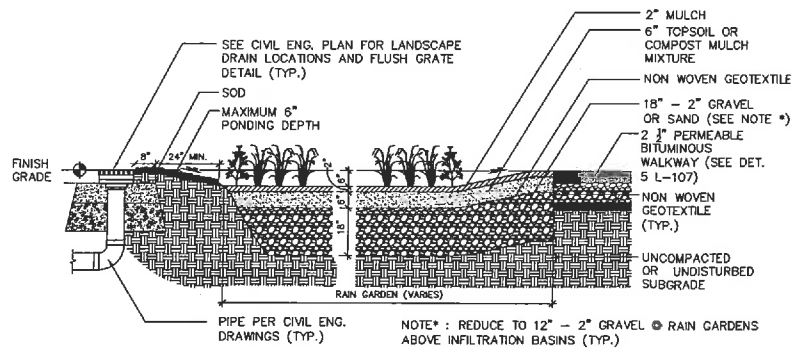
1 GROUND COVER



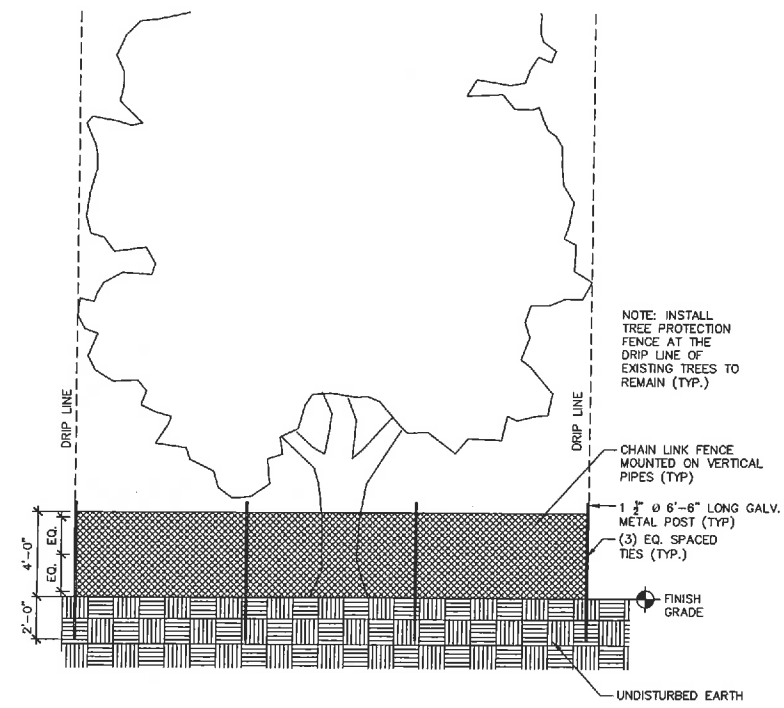
2 TREE PLANTING



3 SHRUB PLANTING



4 BIO RETENTION AREA



5 TREE PROTECTION - EXISTING TREE (E)

No.	Revisions	Date

Job: 2834
Date: 03/27/2017
Scale: AS NOTED
Drawn: YK
Checked: ATR

PLANTING LIST AND PLANTING DETAILS

Rojas Design, Inc.
Architecture
1500 Soldiers Field Road
BIM
Brighton
Interior Design
Massachusetts, 02135
Landscape Architecture
T - 671.720.4100



This drawing and the details on it, as an instrument of service, is property of Rojas Design, Inc. and may be used only for the specific project and shall not be loaned, copied or reproduced in any form without the expressed written consent of Rojas Design, Inc.
Copyright © 2017 Rojas Design, Inc. All Rights Reserved.