

MSBA Enrollment Projection – Belmont, MA

Historic Enrollment Data (DESE)

YEAR	PK	K	1	2	3	4	5	6	7	8	9	10	11	12	K-12	K-4	5-8	9-12
1993-94	31	265	320	261	263	289	248	252	232	212	197	218	179	171	3,107	1,398	944	765
1994-95	30	294	292	302	268	255	293	252	254	235	226	192	216	184	3,263	1,411	1,034	818
1995-96	31	278	297	269	307	269	263	290	259	253	250	230	189	212	3,366	1,420	1,065	881
1996-97	18	275	282	292	270	306	288	276	291	271	244	239	220	191	3,445	1,425	1,126	894
1997-98	22	267	289	295	293	276	297	281	249	286	252	249	227	207	3,468	1,420	1,113	935
1998-99	24	268	278	286	307	298	271	299	259	251	269	240	239	217	3,482	1,437	1,080	965
1999-00	49	262	284	278	282	317	288	273	288	257	251	269	247	225	3,521	1,423	1,106	992
2000-01	50	252	261	293	280	282	318	286	270	292	269	222	264	224	3,513	1,368	1,166	979
2001-02	44	279	253	257	293	285	278	308	284	269	299	246	219	260	3,530	1,367	1,139	1,024
2002-03	53	242	273	272	261	295	275	287	303	283	290	299	252	216	3,548	1,343	1,148	1,057
2003-04	42	276	254	286	272	269	295	296	290	293	314	286	291	249	3,671	1,357	1,174	1,140
2004-05	56	248	272	251	275	274	273	306	284	293	309	298	287	285	3,655	1,320	1,156	1,179
2005-06	68	272	252	280	253	275	270	274	296	285	291	298	294	286	3,626	1,332	1,125	1,169
2006-07	55	274	297	270	296	263	269	273	281	299	287	289	287	287	3,672	1,400	1,122	1,150
2007-08	52	278	286	308	269	309	261	289	274	277	309	279	286	282	3,707	1,450	1,101	1,156
2008-09	72	289	306	285	318	291	296	270	296	278	295	294	291	282	3,791	1,489	1,140	1,162
2009-10	71	330	314	318	307	331	304	314	274	292	265	284	293	277	3,903	1,600	1,184	1,119
2010-11	62	289	328	321	318	302	318	300	306	280	281	257	281	285	3,866	1,558	1,204	1,104
2011-12	66	344	301	330	310	316	297	312	300	302	280	273	256	274	3,895	1,601	1,211	1,083
2012-13	71	318	350	313	346	307	324	296	318	302	308	280	276	256	3,994	1,634	1,240	1,120
2013-14	68	338	331	351	316	350	316	328	298	326	314	314	285	270	4,137	1,686	1,268	1,183
2014-15	63	353	341	332	347	326	339	331	323	292	341	304	312	279	4,220	1,699	1,285	1,236
2015-16	61	312	376	355	341	349	332	341	322	328	300	337	297	311	4,301	1,733	1,323	1,245

Historic Birth Data (MA Department of Public Health)

Maternal Age	1989	1990	1991	1992	1993	1994	1995	1996	1997	1998	1999	2000	2001	2002	2003	2004	2005	2006	2007	2008	2009	2010	2011	2012	2013
10-14 Yrs	0	0	0	0	0	0	0	0	0	0	0	0	0	0	0	0	0	0	0	0	0	0	0	0	0
15-19 Yrs	0	0	0	0	0	0	0	0	0	0	0	0	0	0	0	0	0	0	0	0	0	0	0	0	0
20-24 Yrs	15	5	9	12	10	10	7	5	10	7	6	6	11	0	7	8	7	8	12	10	6	8	5	5	0
25-29 Yrs	62	83	83	55	75	61	56	55	43	40	52	39	46	37	44	47	33	44	37	58	43	53	47	39	36
30-34 Yrs	111	102	108	121	121	129	118	130	114	129	112	101	106	105	111	109	86	91	114	113	106	110	116	113	128
35-39 Yrs	39	67	60	70	84	76	74	69	93	95	88	108	81	103	91	86	97	93	108	93	101	99	69	96	86
40-44 Yrs	16	14	7	19	15	14	22	20	19	12	19	20	26	16	28	30	24	27	22	31	22	23	28	23	23
Total Births	248	272	269	278	306	291	282	284	282	286	280	278	277	270	282	286	249	266	298	309	282	294	271	281	279

MSBA Enrollment Projection – Belmont, MA

Female Population Data

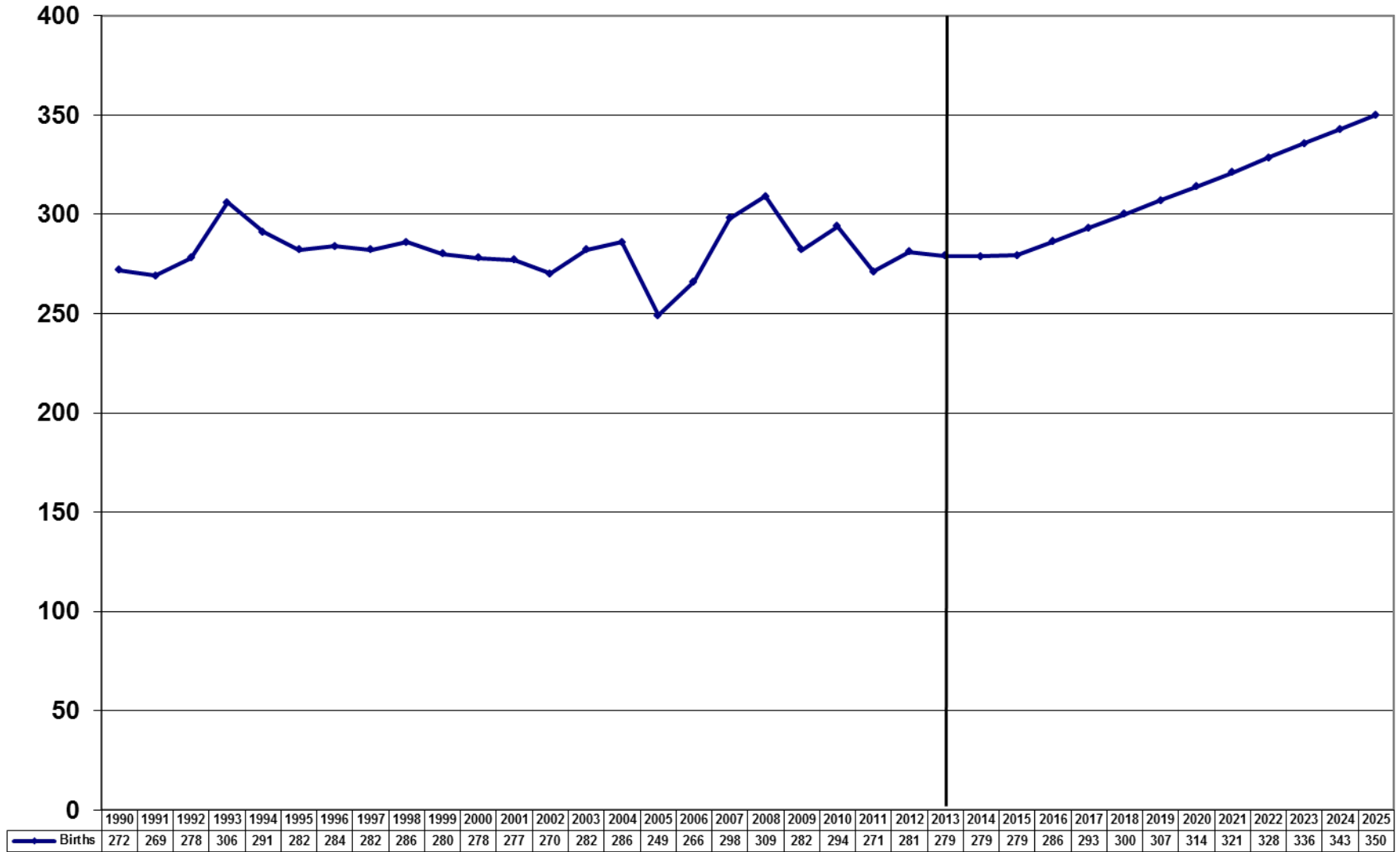
Maternal Age	US Census Data			U Mass Donohue Institute				2011-2013 Avg Fertility Rate
	1990	2000	2010	2015	2020	2025	2030	
10-14 Yrs	596	756	896	1,018	971	948	1,089	0.00%
15-19 Yrs	634	604	693	787	900	857	792	0.00%
20-24 Yrs	829	419	462	504	599	683	639	0.72%
25-29 Yrs	1,279	736	689	832	926	1,092	1,235	5.59%
30-34 Yrs	1,176	936	771	905	1,053	1,147	1,333	14.73%
35-39 Yrs	1,038	1,151	909	727	828	930	1,002	10.25%
40-44 Yrs	1,047	1,167	1,050	809	678	755	834	2.64%
Total Females	13,509	12,902	13,109	13,236	13,634	14,183	14,800	2.10%

Birth Projections

Maternal Age	2014	2015	2016	2017	2018	2019	2020	2021	2022	2023	2024	2025	2026	2027	2028	2029	2030
10-14 Yrs	0	0	0	0	0	0	0	0	0	0	0	0	0	0	0	0	0
15-19 Yrs	0	0	0	0	0	0	0	0	0	0	0	0	0	0	0	0	0
20-24 Yrs	4	4	4	4	4	4	4	4	5	5	5	5	5	5	5	5	5
25-29 Yrs	45	47	48	49	50	51	52	54	55	57	59	61	63	64	66	67	69
30-34 Yrs	129	133	138	142	146	151	155	158	161	163	166	169	174	180	185	191	196
35-39 Yrs	78	75	77	79	81	83	85	87	89	91	93	95	97	98	100	101	103
40-44 Yrs	23	21	21	20	19	19	18	18	19	19	20	20	20	21	21	22	22
Totals	279	279	286	293	300	307	314	321	328	336	343	350	359	368	377	386	395

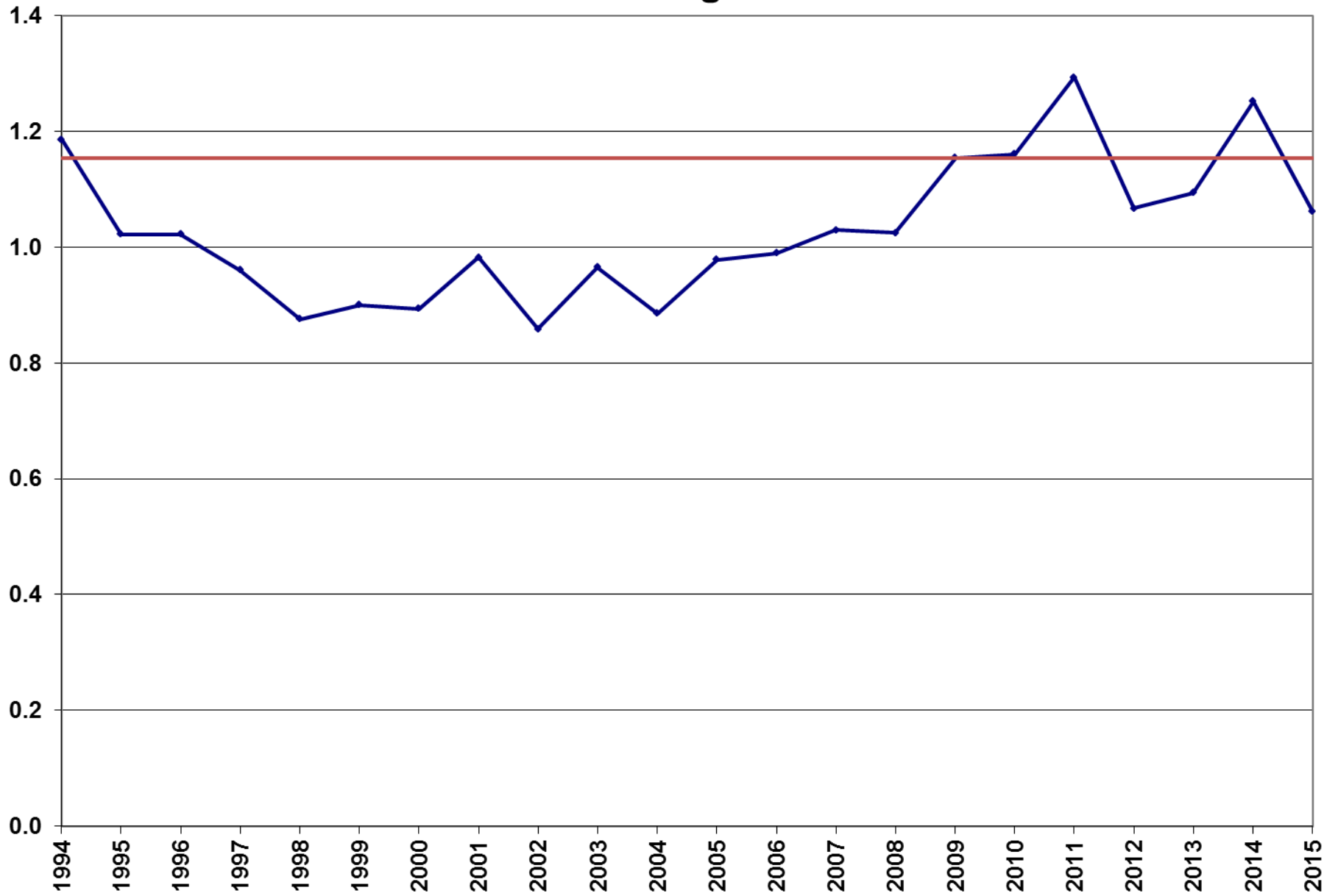
MSBA Enrollment Projection – Belmont, MA

Births



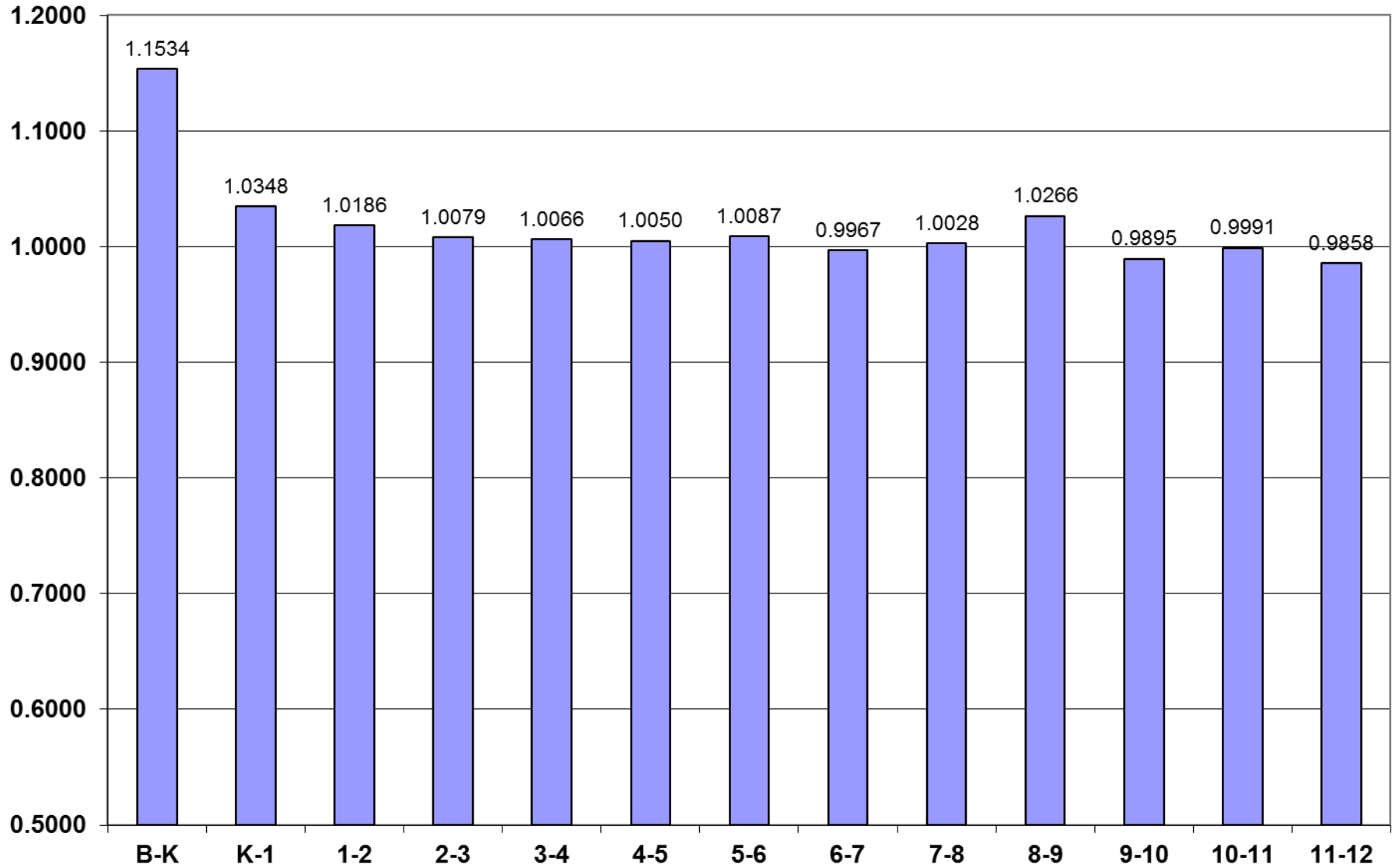
MSBA Enrollment Projection – Belmont, MA

Birth to Kindergarten Ratio



MSBA Enrollment Projection – Belmont, MA

Grade-to-Grade Ratios - 5 Yr Average



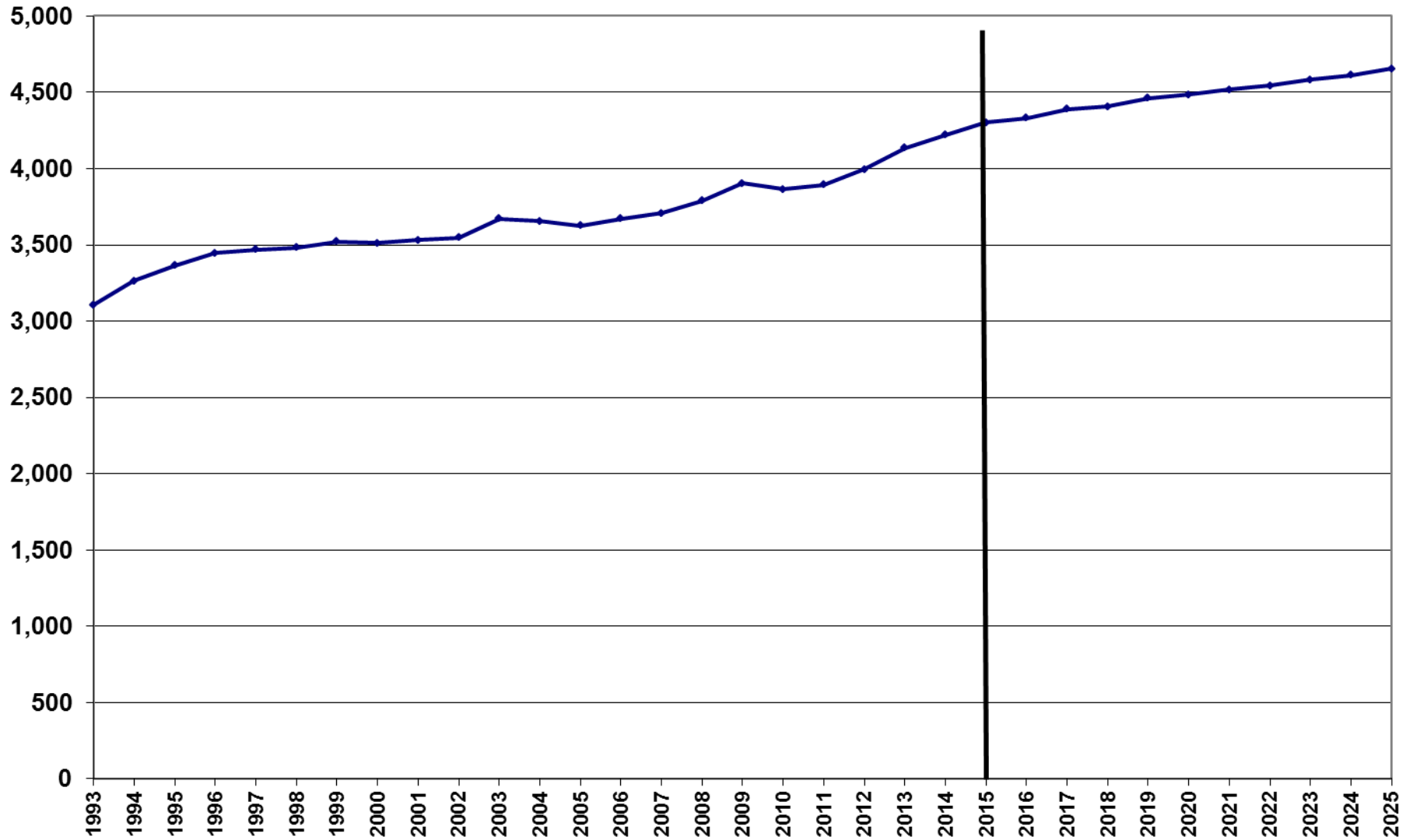
MSBA Enrollment Projection – Belmont, MA

Base Enrollment Projections

YEAR	K	1	2	3	4	5	6	7	8	9	10	11	12	TOTAL	K-4	5-8	9-12
1993	265	320	261	263	289	248	252	232	212	197	218	179	171	3,107	1,398	944	765
1994	294	292	302	268	255	293	252	254	235	226	192	216	184	3,263	1,411	1,034	818
1995	278	297	269	307	269	263	290	259	253	250	230	189	212	3,366	1,420	1,065	881
1996	275	282	292	270	306	288	276	291	271	244	239	220	191	3,445	1,425	1,126	894
1997	267	289	295	293	276	297	281	249	286	252	249	227	207	3,468	1,420	1,113	935
1998	268	278	286	307	298	271	299	259	251	269	240	239	217	3,482	1,437	1,080	965
1999	262	284	278	282	317	288	273	288	257	251	269	247	225	3,521	1,423	1,106	992
2000	252	261	293	280	282	318	286	270	292	269	222	264	224	3,513	1,368	1,166	979
2001	279	253	257	293	285	278	308	284	269	299	246	219	260	3,530	1,367	1,139	1,024
2002	242	273	272	261	295	275	287	303	283	290	299	252	216	3,548	1,343	1,148	1,057
2003	276	254	286	272	269	295	296	290	293	314	286	291	249	3,671	1,357	1,174	1,140
2004	248	272	251	275	274	273	306	284	293	309	298	287	285	3,655	1,320	1,156	1,179
2005	272	252	280	253	275	270	274	296	285	291	298	294	286	3,626	1,332	1,125	1,169
2006	274	297	270	296	263	269	273	281	299	287	289	287	287	3,672	1,400	1,122	1,150
2007	278	286	308	269	309	261	289	274	277	309	279	286	282	3,707	1,450	1,101	1,156
2008	289	306	285	318	291	296	270	296	278	295	294	291	282	3,791	1,489	1,140	1,162
2009	330	314	318	307	331	304	314	274	292	265	284	293	277	3,903	1,600	1,184	1,119
2010	289	328	321	318	302	318	300	306	280	281	257	281	285	3,866	1,558	1,204	1,104
2011	344	301	330	310	316	297	312	300	302	280	273	256	274	3,895	1,601	1,211	1,083
2012	318	350	313	346	307	324	296	318	302	308	280	276	256	3,994	1,634	1,240	1,120
2013	338	331	351	316	350	316	328	298	326	314	314	285	270	4,137	1,686	1,268	1,183
2014	353	341	332	347	326	339	331	323	292	341	304	312	279	4,220	1,699	1,285	1,236
2015	312	376	355	341	349	332	341	322	328	300	337	297	311	4,301	1,733	1,323	1,245
2016	313	323	383	358	343	351	335	340	323	337	297	337	293	4,331	1,720	1,349	1,264
2017	324	323	329	386	360	345	354	334	341	331	333	297	332	4,389	1,722	1,374	1,293
2018	322	335	329	331	389	362	348	353	335	350	328	333	292	4,407	1,706	1,398	1,303
2019	321	333	342	332	334	391	365	347	354	344	346	328	328	4,464	1,662	1,457	1,346
2020	322	333	339	344	334	335	394	364	348	363	340	346	323	4,486	1,672	1,441	1,372
2021	330	333	339	342	347	336	338	393	365	357	359	340	341	4,519	1,691	1,432	1,397
2022	338	342	340	341	344	348	339	337	394	375	353	359	335	4,545	1,705	1,418	1,422
2023	346	350	348	342	344	346	351	338	338	404	371	353	354	4,585	1,730	1,373	1,482
2024	354	358	356	351	344	345	349	350	339	347	400	370	348	4,612	1,763	1,383	1,465
2025	362	366	365	359	353	346	348	348	351	348	343	400	365	4,655	1,805	1,393	1,456
10 yr avg	313	323	318	317	314	306	305	299	298	298	291	286	280	3,949	1,585	1,208	1,156
5 yr avg	333	340	336	332	330	322	322	312	310	309	302	285	278	4,109	1,652	1,255	1,162
2 yr avg	333	359	344	344	338	336	336	323	310	321	321	305	295	4,261	1,716	1,304	1,241
5 yr proj	320	329	344	350	352	357	359	347	340	345	329	328	314	4,415	1,696	1,404	1,316
10 yr proj	333	340	347	349	349	351	352	350	349	356	347	346	331	4,499	1,718	1,402	1,380

MSBA Enrollment Projection – Belmont, MA

Total Enrollment



MSBA Enrollment Projection – Belmont, MA

Enrollment by Grade Group

