



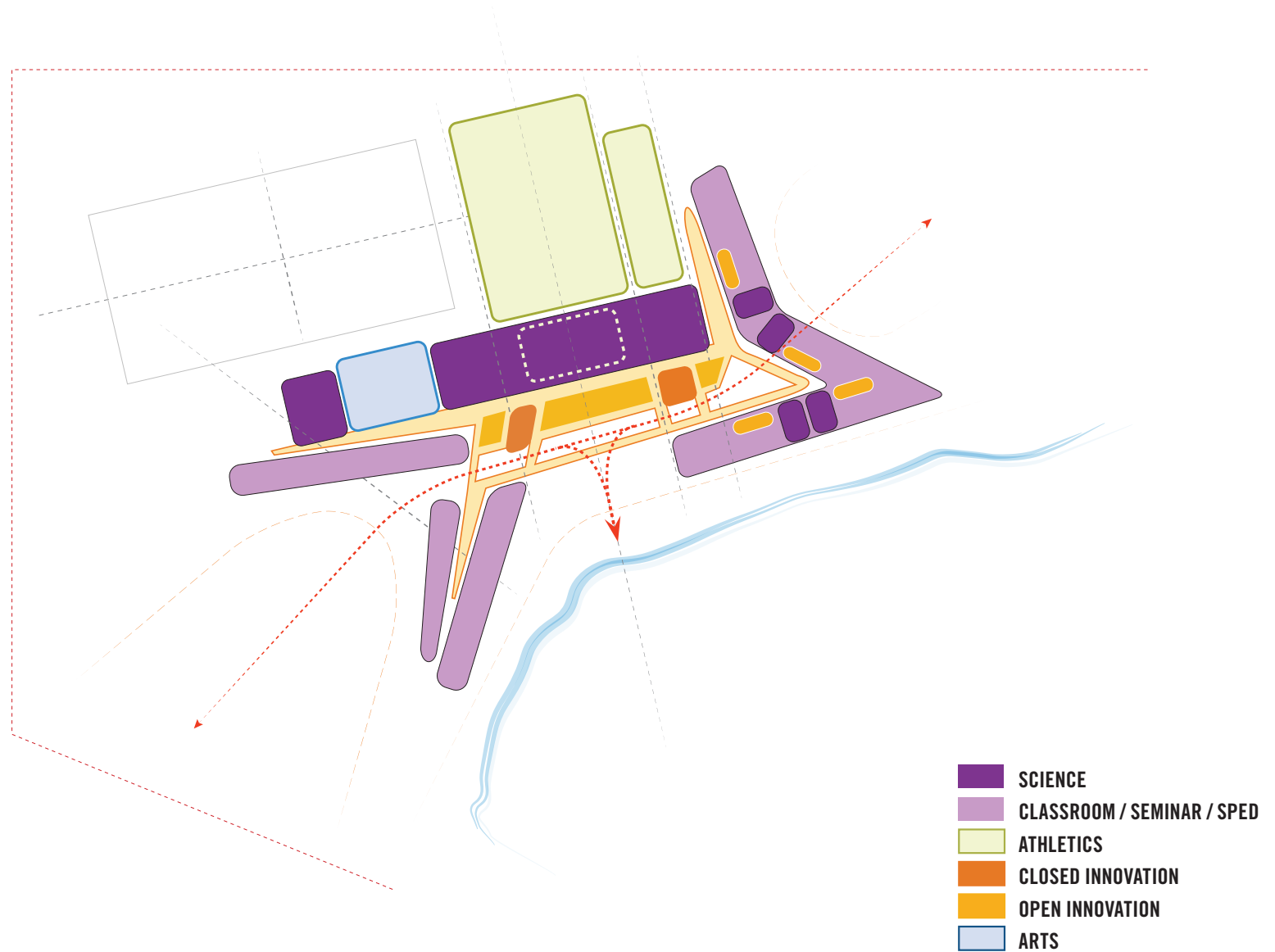
# 04.11.2018 BHS BUILDING COMMITTEE

BELMONT HIGH SCHOOL  
SCHEMATIC DESIGN UPDATE

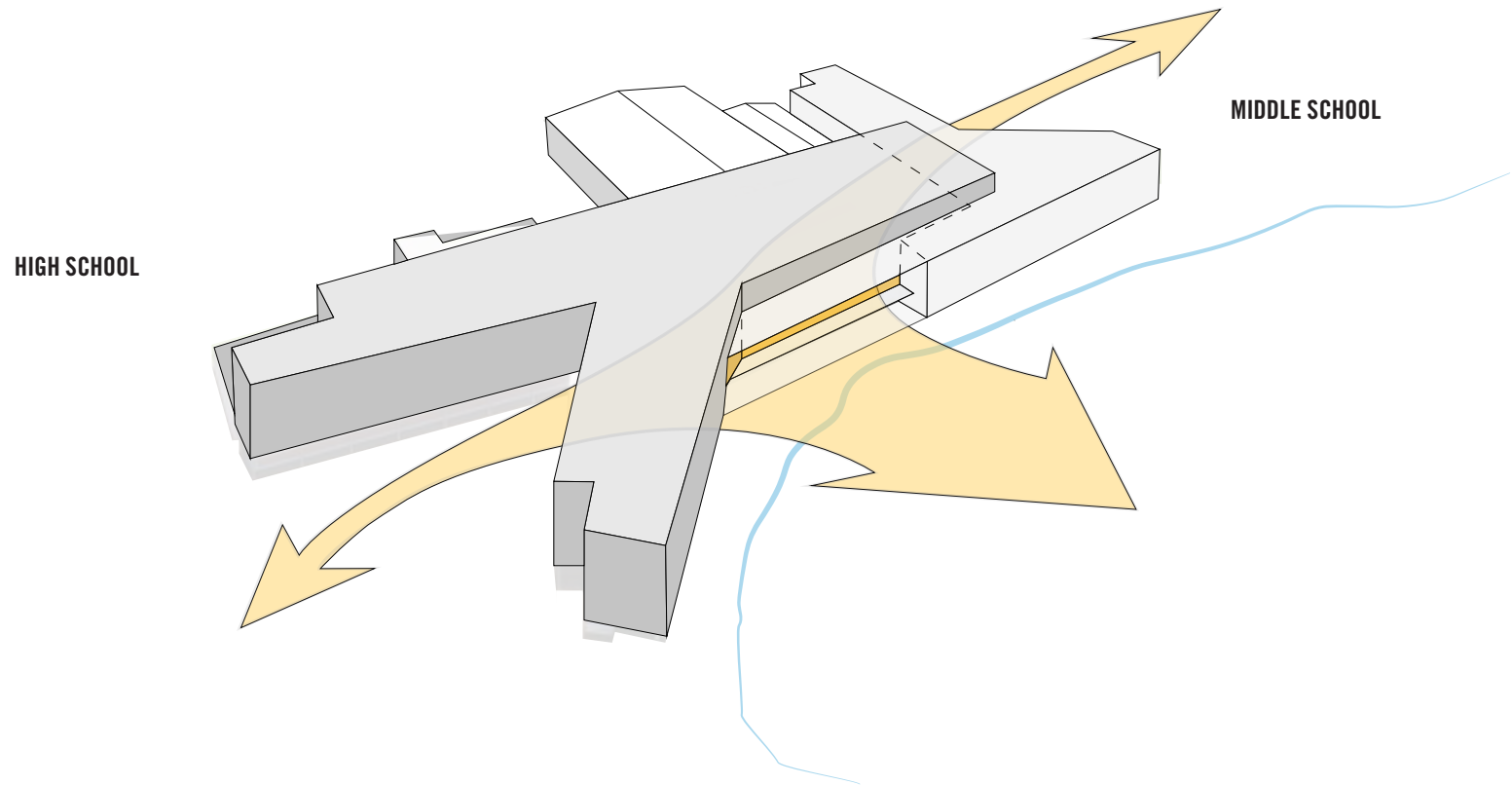
# SITE PLAN



# ORGANIZATION DIAGRAM

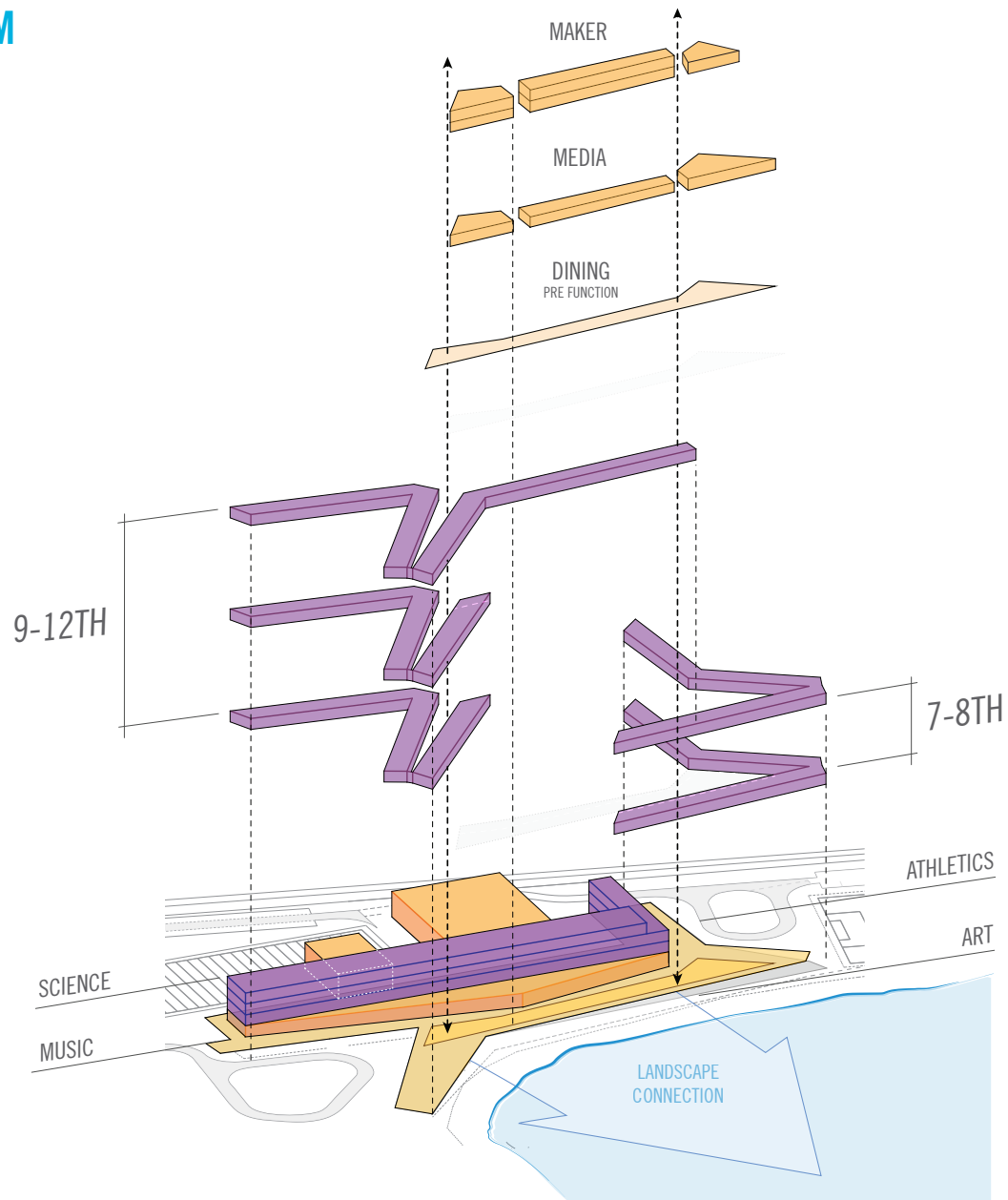


# MASSING DIAGRAM





# MASSING DIAGRAM



## SECTION DIAGRAM - 03/28

OVERALL HEIGHT - 64'-10"  
(76'-10" WITH ADDITIONAL 12' PH SCREEN)

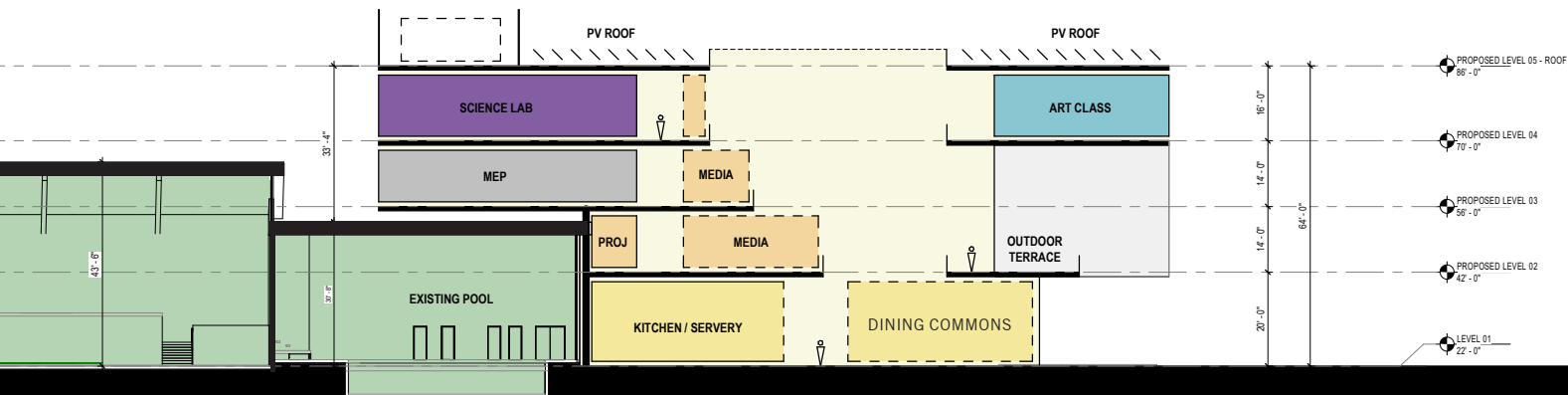
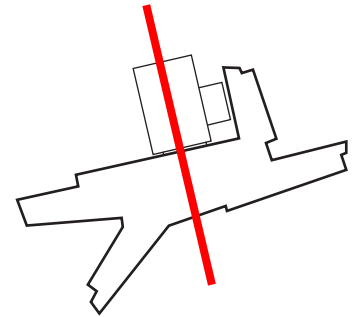
MECH. SCREEN 12'-0"

LEVEL 4 16'-10"

LEVEL 3 14'-0"

LEVEL 2 14'-0"

LEVEL 1 20'-0"



## SECTION DIAGRAM - NEW

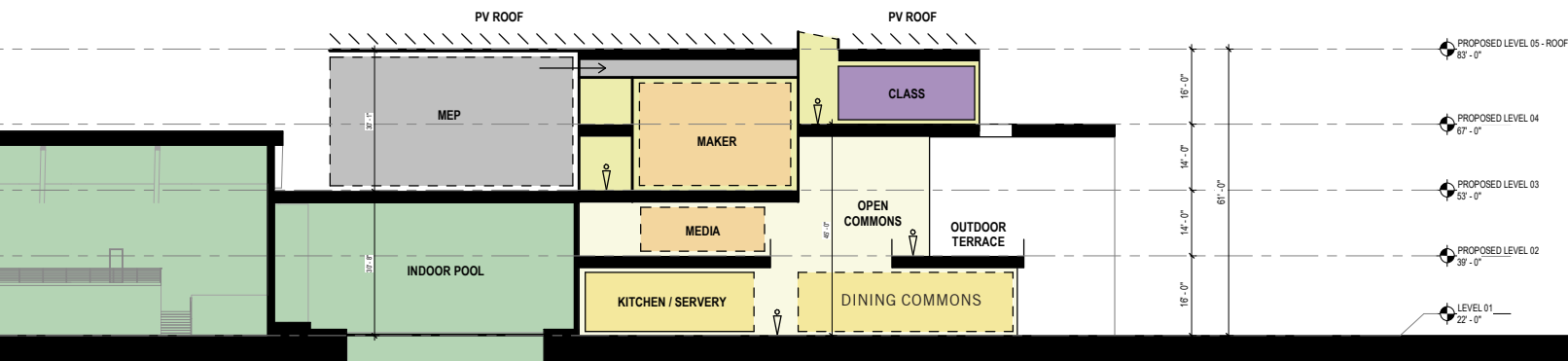
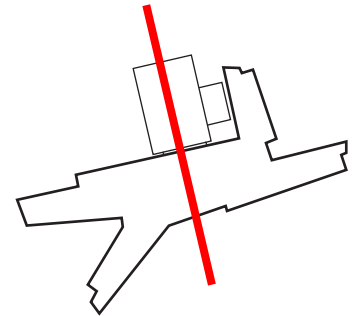
OVERALL HEIGHT - 58'-60'  
WITH INTEGRATED MECHANICAL LAYOUT

LEVEL 4 BETWEEN 14' AND 16'

LEVEL 3 14'-0"

LEVEL 2 14'-0"

LEVEL 1 16'-0"

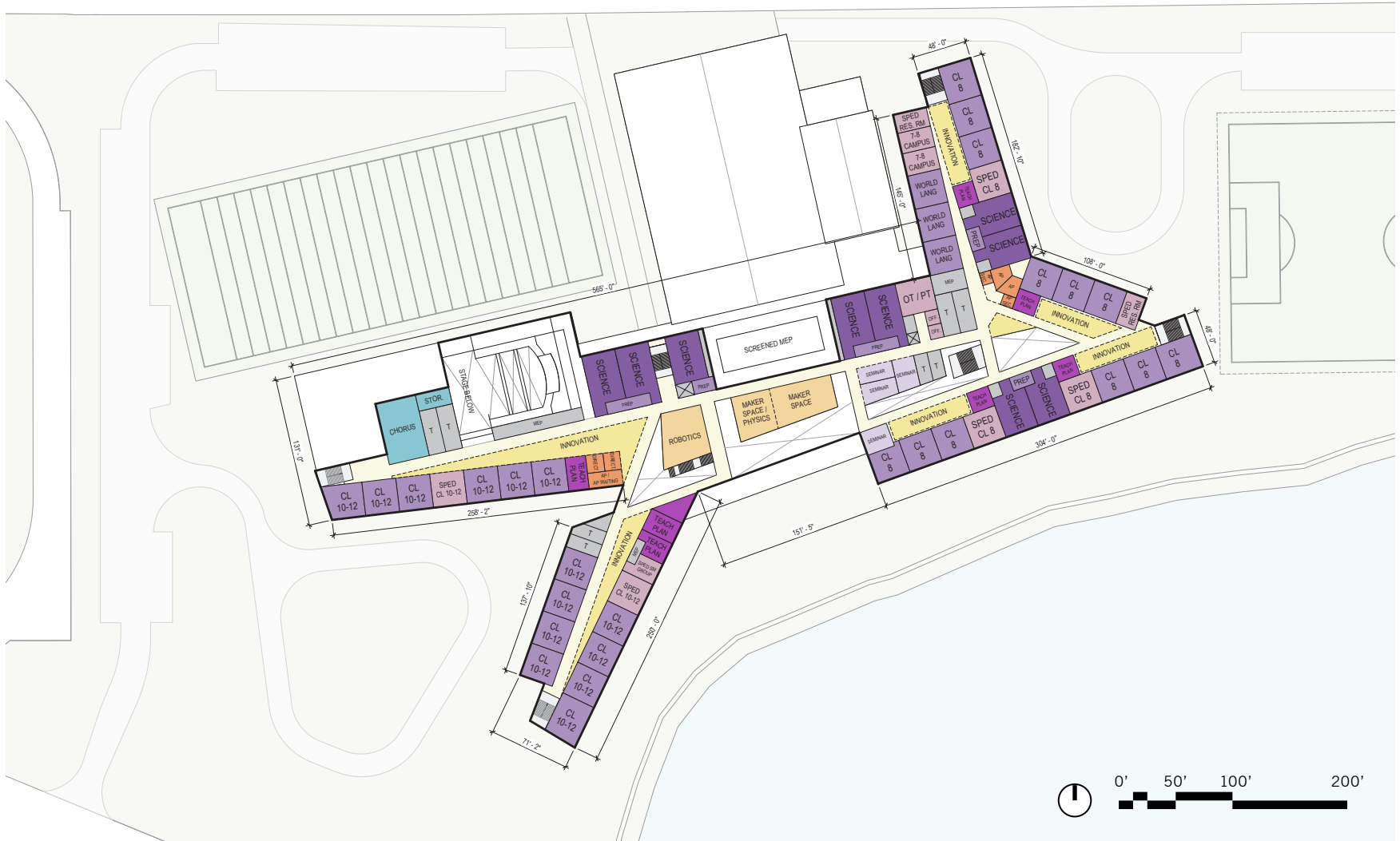


# LEVEL 1 PLAN

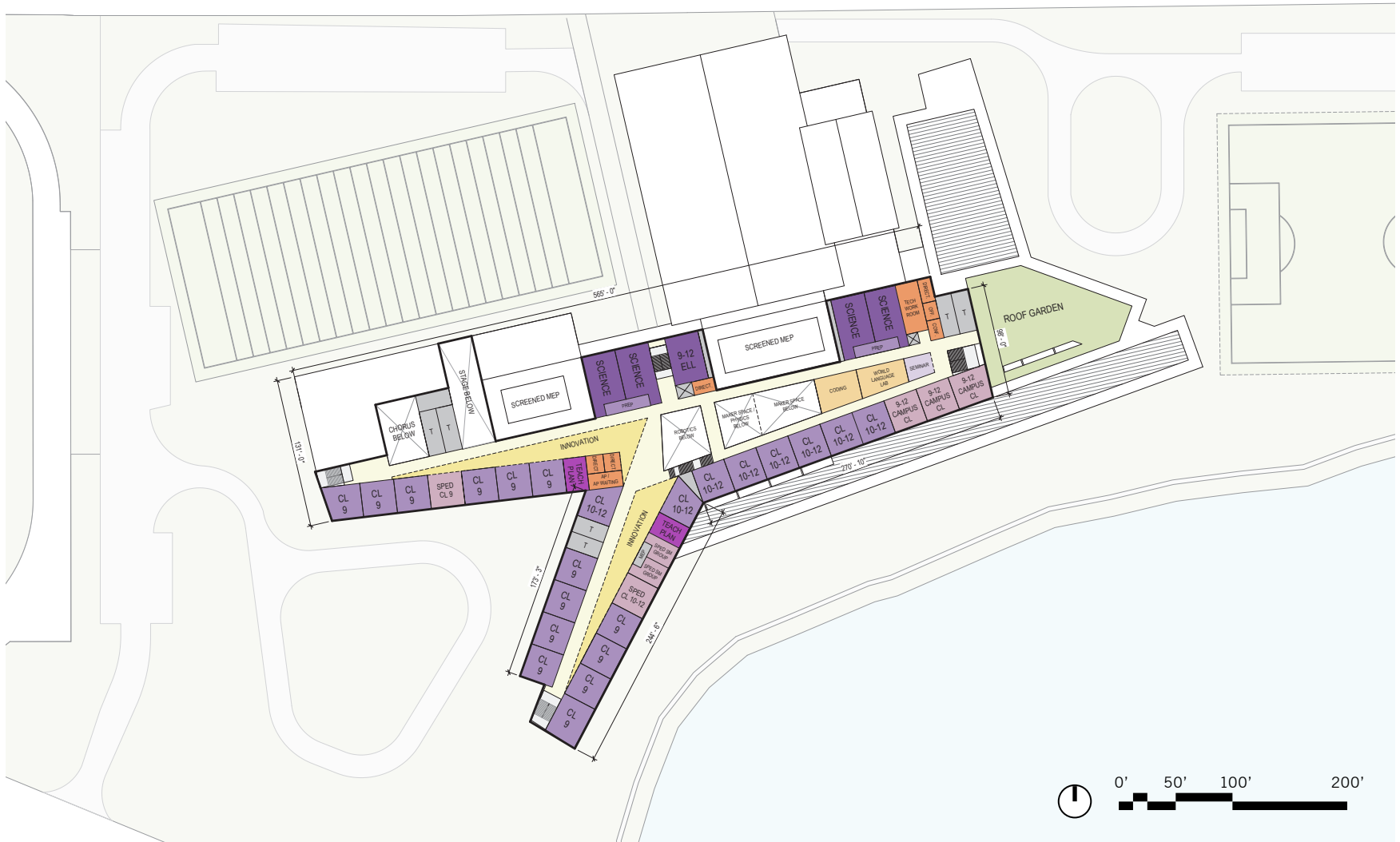


[illegible]

## LEVEL 3 PLAN



## LEVEL 4 PLAN



# ROOF PLAN

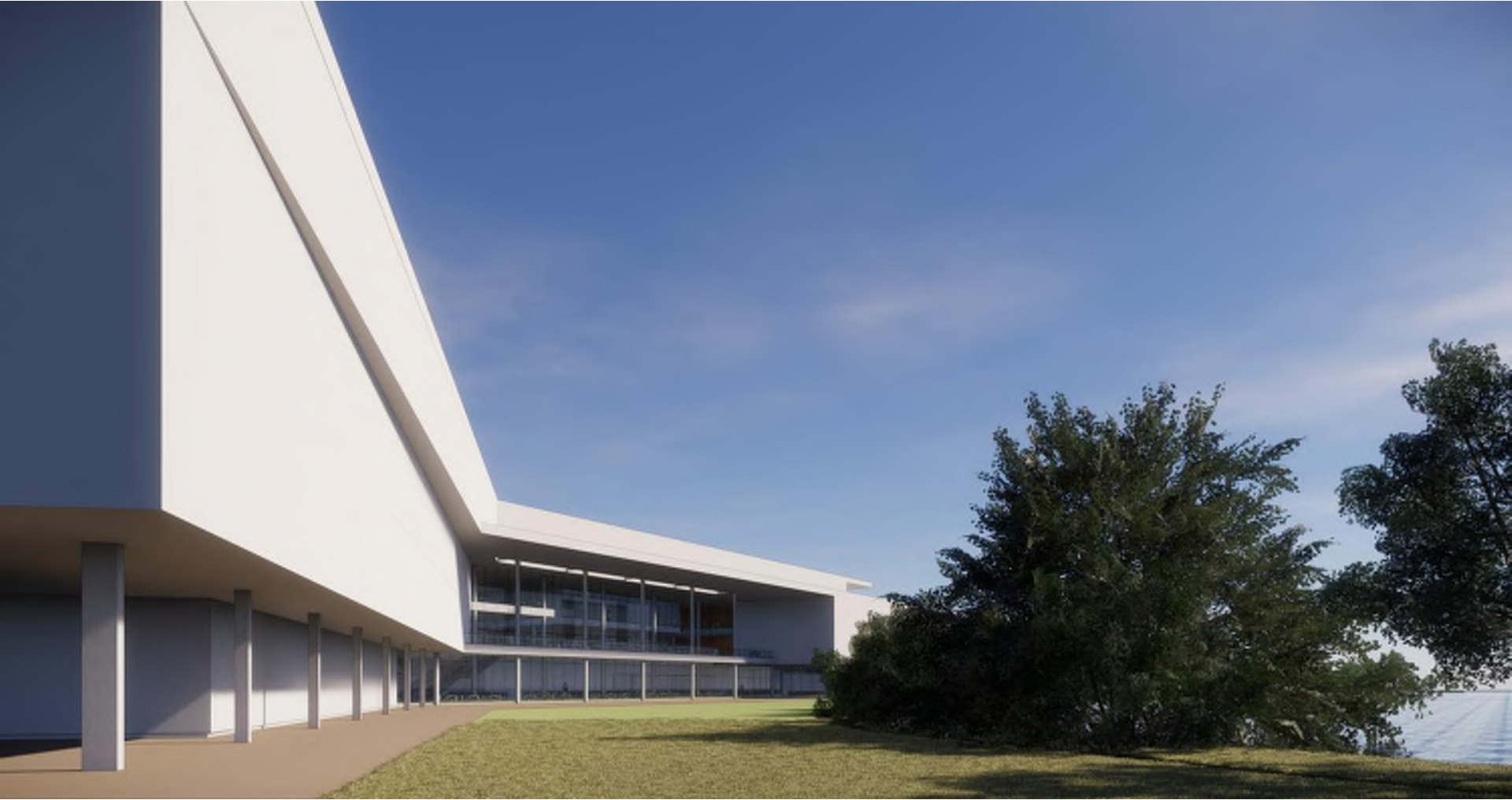




## AERIAL LOOKING NORTH



## VIEW LOOKING NORTH AT DINNING COMMONS ENTRY

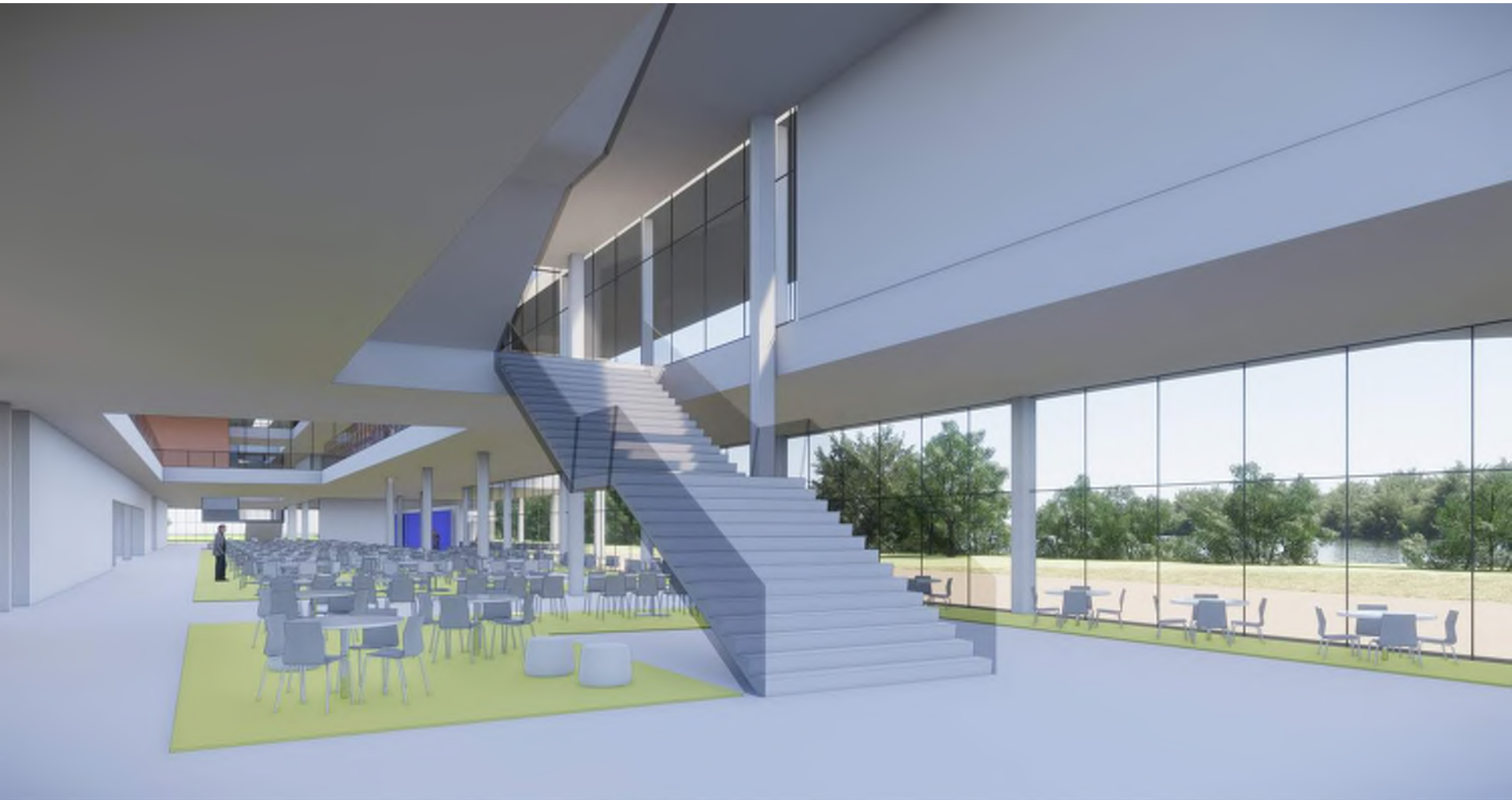




## VIEW LOOKING WEST AT DINNING COMMONS ENTRY



## VIEW FROM DINING COMMONS, HIGH SCHOOL ENTRY - LEVEL



## VIEW OF MEDIA CENTER - LEVEL 2





## VIEWS TO POND - LEVEL 2



## VIEW OF CLOSED MEDIA CENTER - LEVEL 2



## VIEW OF MIDDLE SCHOOL DINING - LEVEL 1



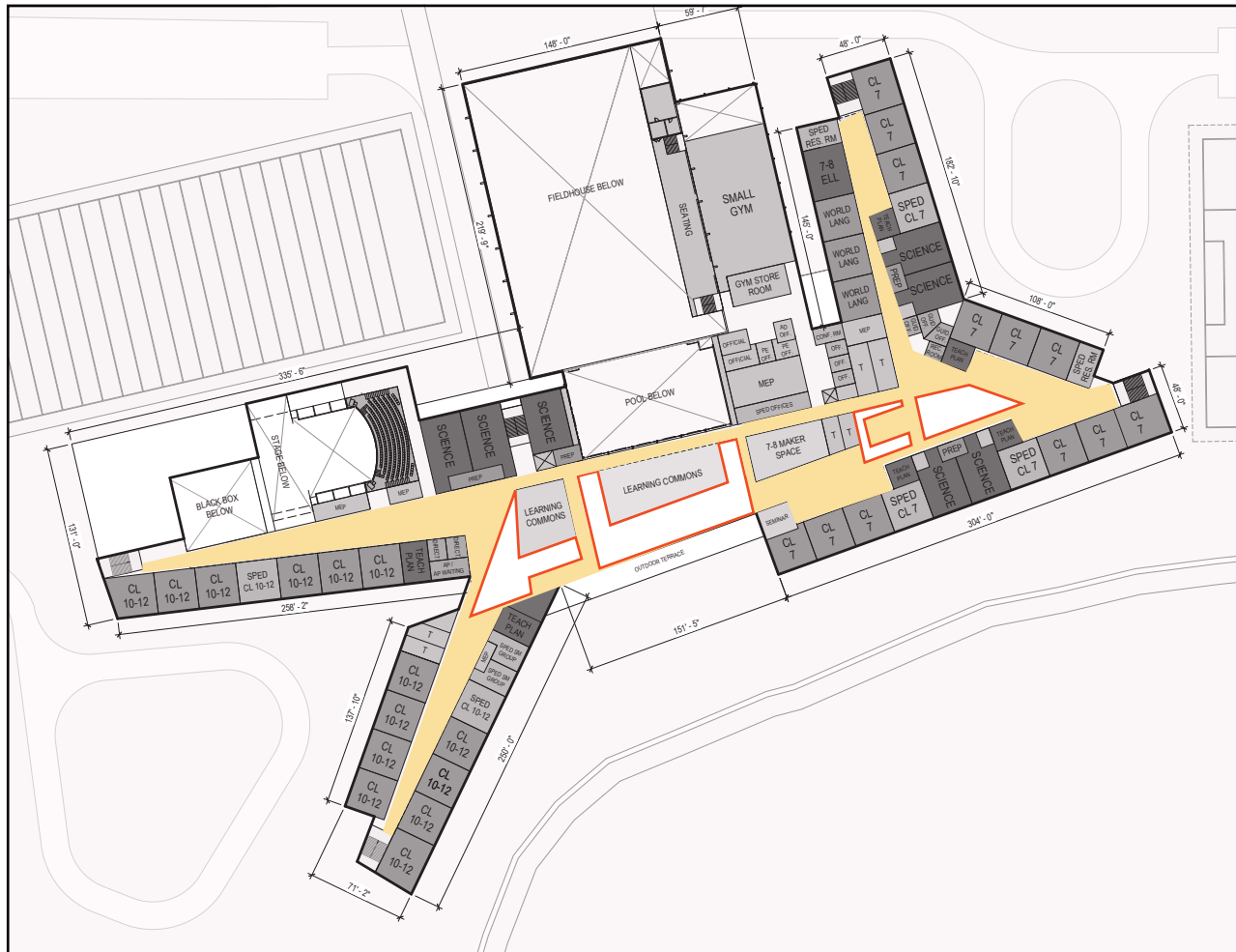


## VIEW OF MIDDLE SCHOOL MEDIA CENTER - LEVEL 2



## SCALE COMPARISON

## BELMONT



## DEARBORN

