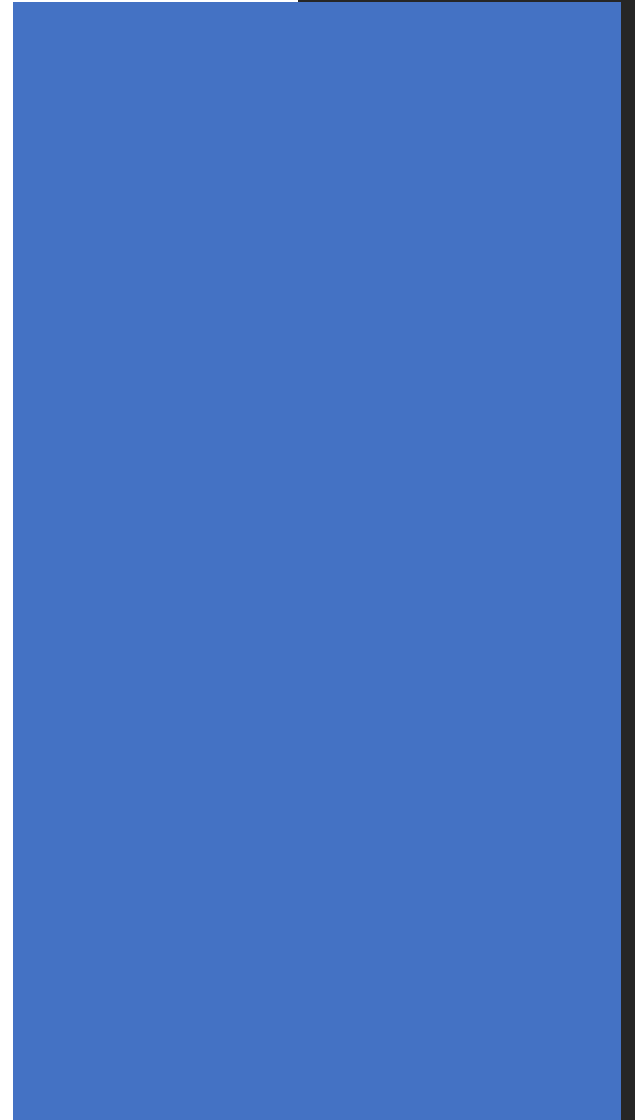
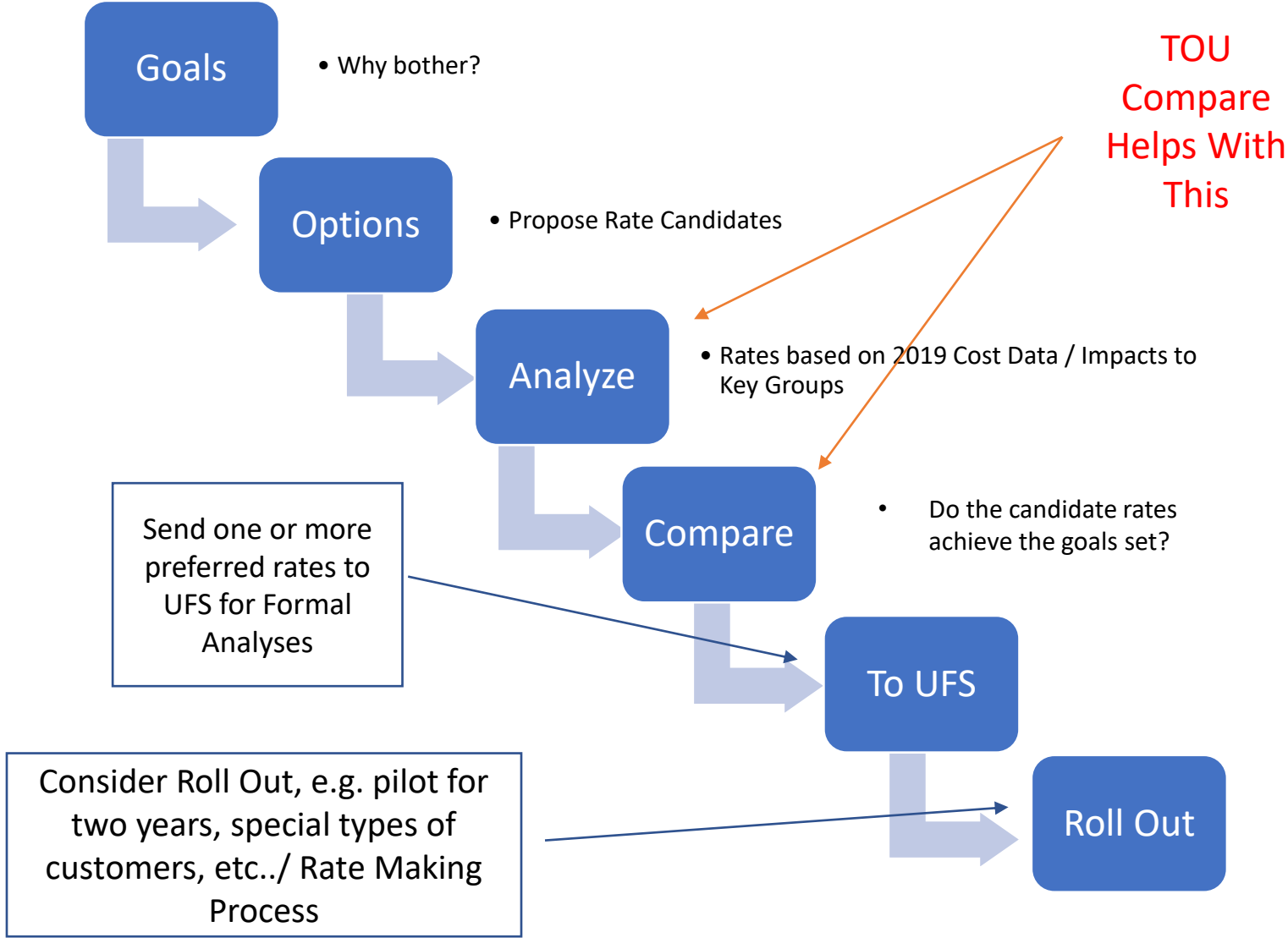




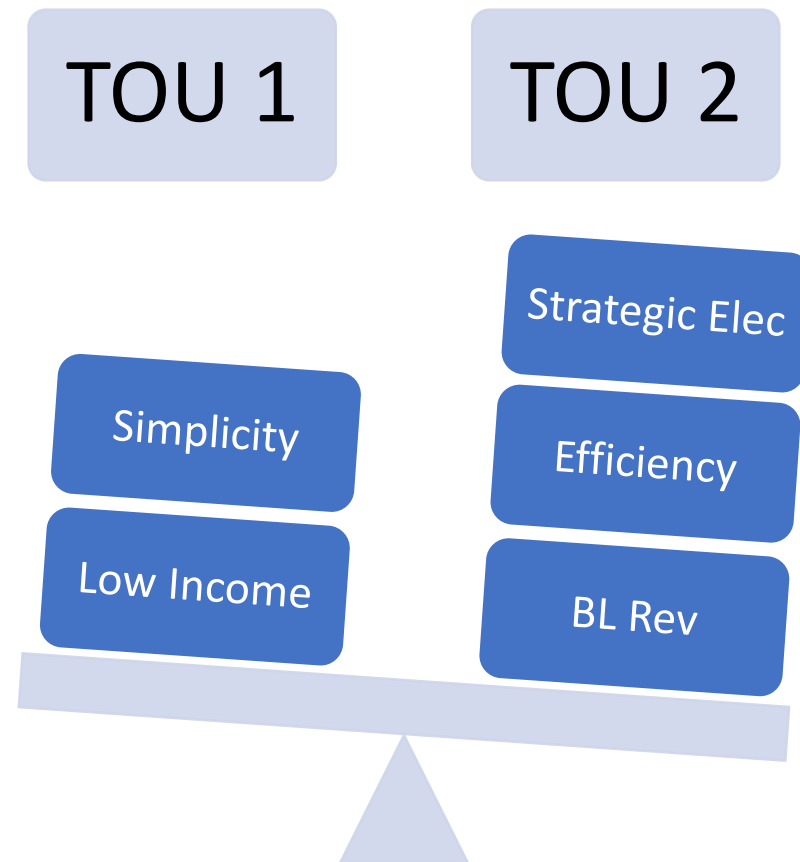
TOU Compare Brief Overview



Suggested Process & UFS Role (Mar 2020)



Purpose: Compare TOU Options Against Goals Established in March 2020



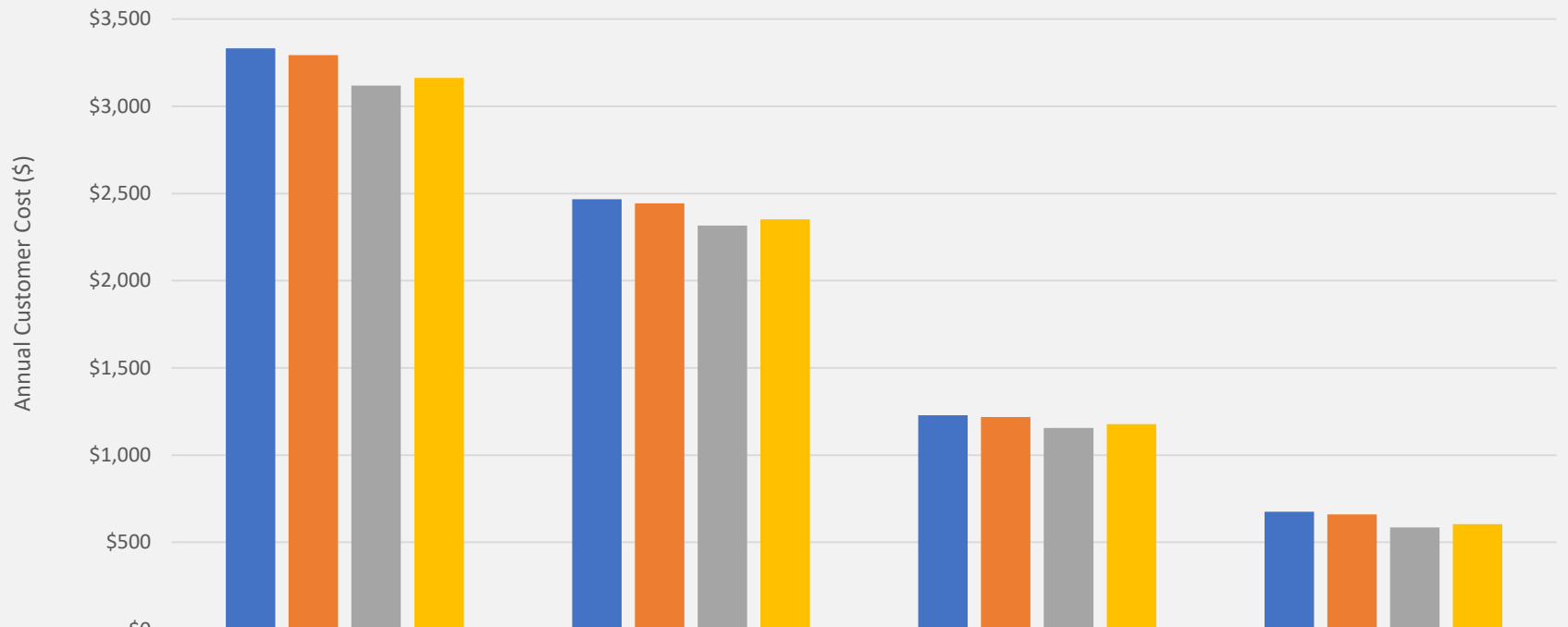
TOU Compare Features

- Compares Three TOU Rates Against 2019 Baseline
- Cost Impacts Calculated for 8 Customer Categories
- Designed for easy intuitive use by anyone interested in BL TOU, modify as you see fit
- Alternative Distribution rate structure available
- TOU with Critical Peak will need some modification
- Note: Some customer load data hidden / locked out to enable public distribution
 - Check with Becca / Ben if you want access to the data

TOU Examples (Residential)

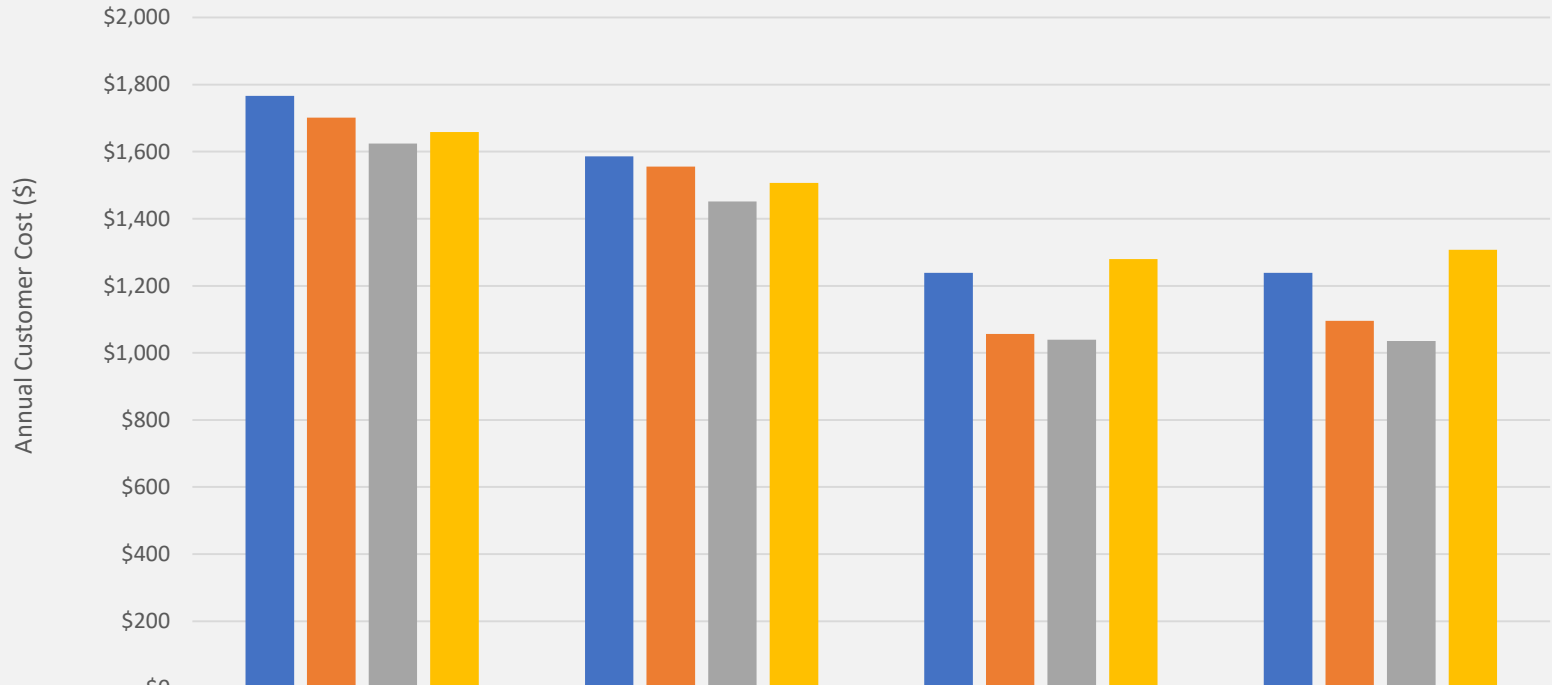
| RATE Name | DESCRIPTION | RATES (\$/kWh) |
|---------------------|--|--|
| Baseline | Rate based on BL 2019 Costs. Fixed through the year. | \$0.174 |
| 12-Hour Peaker | Peak: All Year (10 AM – 10 PM) , Weekends Excluded | Peak: \$0.213 (23%) Off Peak: \$0.122 (-30%) |
| Summer Peaker | Peak: June – Sept only (1 – 7 PM), Weekends Included | Peak: \$0.472 (172%) Off Peak: \$0.137 (-21%) |
| Clean Peak Standard | Peak: Fall & Winter (4 – 8 PM), Spring (5 – 9 PM), Summer (3 – 7 PM), Weekends Excluded | Peak: (Winter: \$0.230, Spring: \$0.235, Summer: \$0.647, Fall: \$0.162) Off Peak: (Winter: \$0.125, Spring: \$0.122, Summer: \$0.118, Fall: \$0.136) |

Residential Cost Comparison: With Change In Consumption



| | Top 10% Res Customers | Top 25% Res Customers | All Residential Customers | Low Income Customers (LI) |
|-----------------------|-----------------------|-----------------------|---------------------------|---------------------------|
| ■ Baseline | \$3,332 | \$2,467 | \$1,228 | \$675 |
| ■ 12 Hour Peaker | \$3,294 | \$2,444 | \$1,219 | \$660 |
| ■ Summer Peaker | \$3,119 | \$2,316 | \$1,155 | \$585 |
| ■ Clean Peak Standard | \$3,163 | \$2,351 | \$1,177 | \$605 |

Residential Cost Comparison: With Change In Consumption (EV, HP, PV)

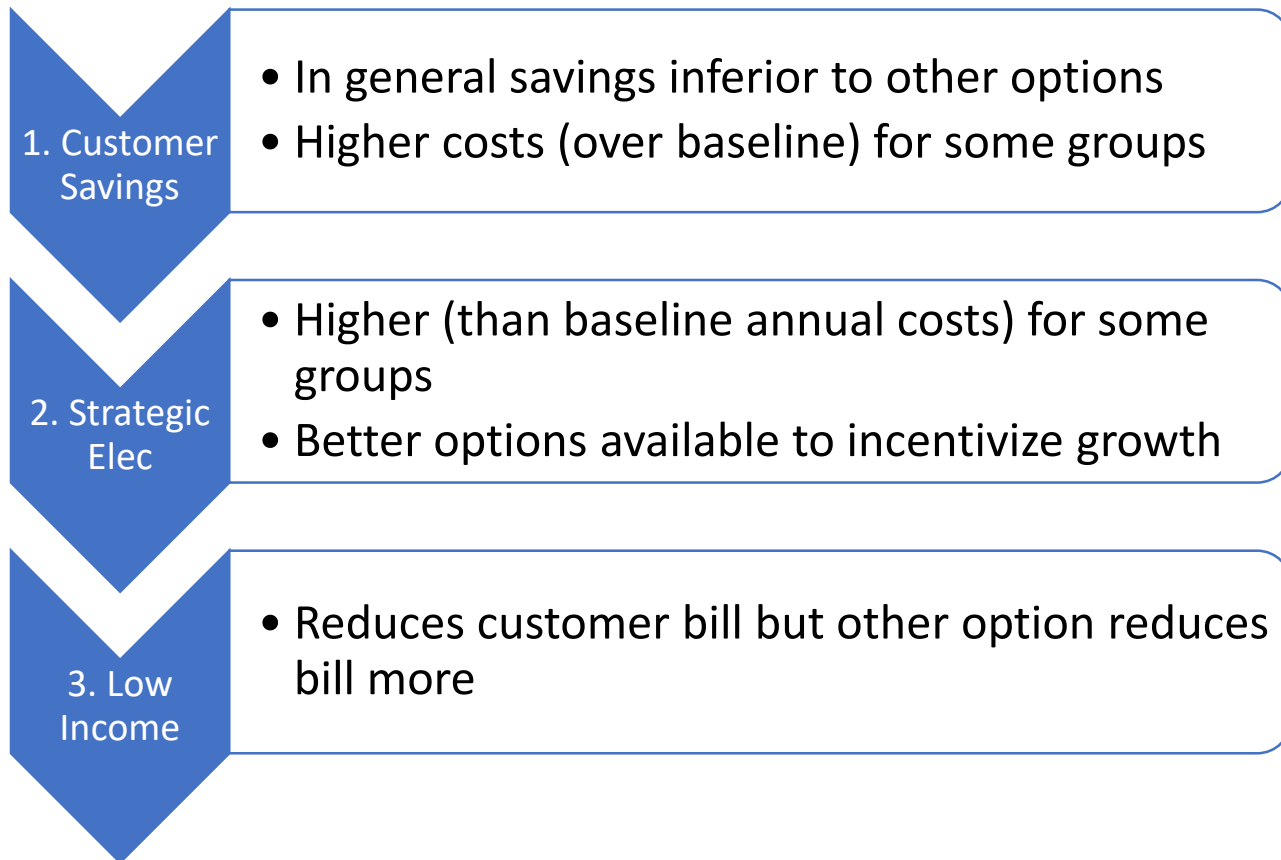


| | Customers With EV | Customers With Heat Pumps (HP) | Customers With PV (PV) | Customers With EV & PV |
|-----------------------|-------------------|--------------------------------|------------------------|------------------------|
| ■ Baseline | \$1,766 | \$1,586 | \$1,238 | \$1,238 |
| ■ 12 Hour Peaker | \$1,702 | \$1,555 | \$1,056 | \$1,095 |
| ■ Summer Peaker | \$1,624 | \$1,452 | \$1,039 | \$1,035 |
| ■ Clean Peak Standard | \$1,659 | \$1,507 | \$1,280 | \$1,307 |

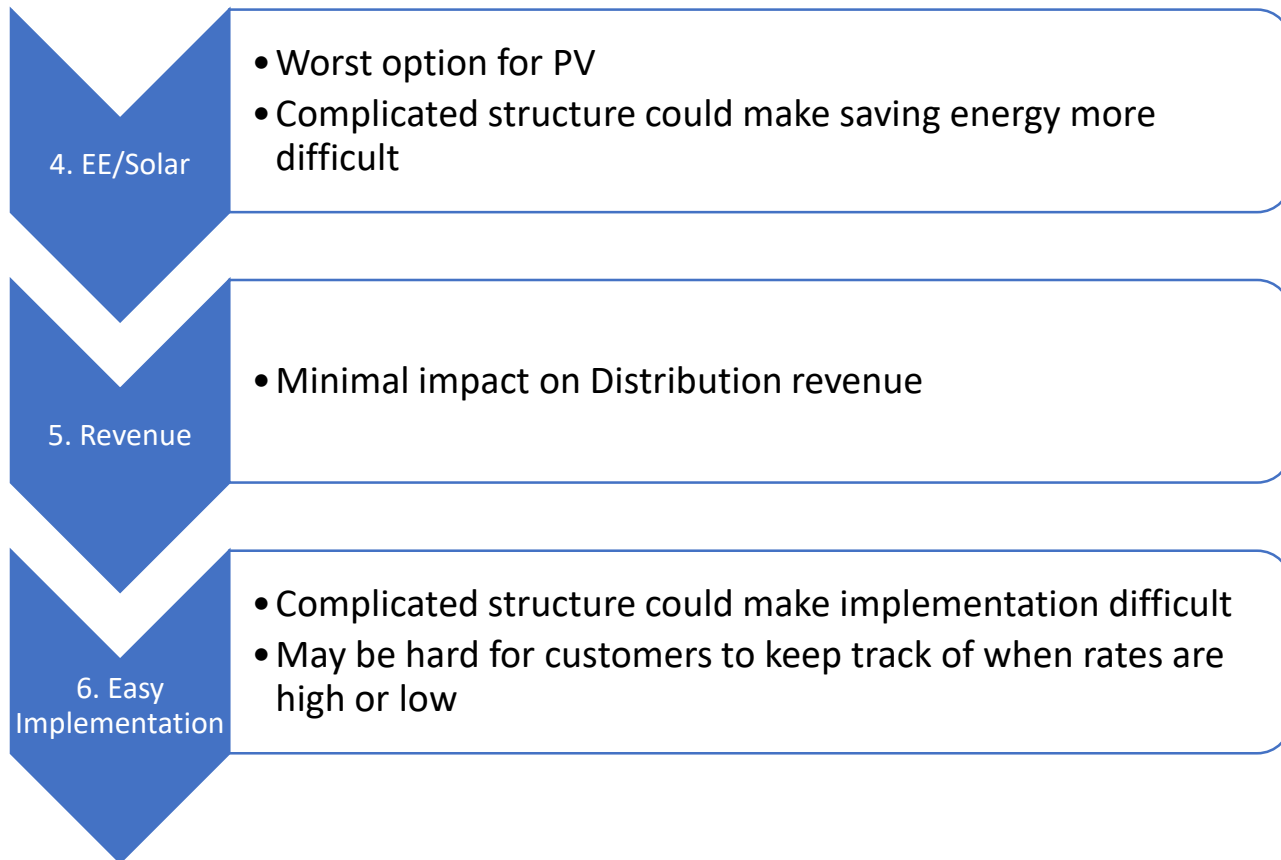
BL Distribution Revenues (Residential Only)

| | Annual Load (MWh) | Revenue | Difference (%) |
|------------------------|----------------------|-------------|----------------|
| Baseline | 68,534 | \$4,863,982 | 0.0% |
| 12 Hour Peaker | 68,452 | \$4,858,301 | -0.1% |
| Summer Peaker | 68,402 | \$4,854,877 | -0.2% |
| Clean Peak Standard | 68,136 | \$4,836,437 | -0.6% |

Example TOU Screening Assessment: Clean Peak Standard



Example TOU Screening Assessment: Clean Peak Standard, cont..



Example TOU Screening Assessment: Clean Peak Standard, cont..

Result (for demonstration only):

- Clean Peak Standard TOU not a good fit for Belmont Light

