



Belmont Community Path – CPCC Meeting

May 14, 2020

Building better communities with you

Agenda / Overview



Agenda

1) Project Update:

- Progress Report
- Public Engagement / Outreach
- Design Details

2) Public Information Meeting – Planning Discussion

- Format (Virtual or in person?)
- Meeting Facilitation & Process
- Meeting Date
- Purpose
- Information materials that will be shared



Project Update: Progress Report

Progress Report:

- **Conceptual Design Report (CDR) submitted to Town, MassDOT and MBTA on February 6, 2020**
- **Meeting with MBTA and MassDOT on March 9, 2020**
- **Boring Plans Prepared for Underpass and Retaining Walls**
- **Borings to Begin in 2-3 weeks**
- **Anticipated 25% Design Submission July 2020**

Project Update: Public Engagement/Outreach

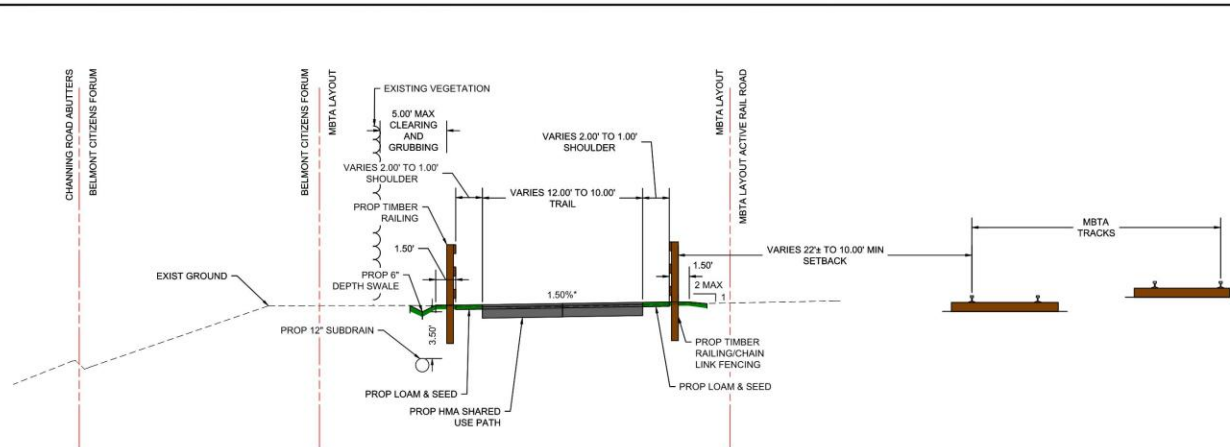
- 1. What We Heard (Summary of Stakeholder Meetings):**
 1. Channing Road
 2. Student Focus Group

- 2. Engagement Means (& opportunities for feedback)**
 1. Public Meetings (upcoming)
 2. Site Walk (held and upcoming)
 3. Project Website Updates
 4. Call for Art

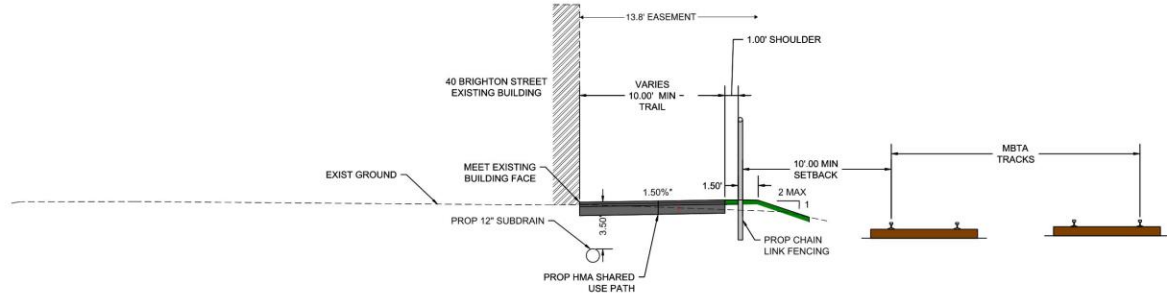
- 3. Ongoing / Upcoming Opportunities to engage in the project**
 - branding
 - school involvement
 - Solicit input on design aspects (e.g. screening options etc....)

Path Sections

N:\3548 BelmontCompPath\Transportation\CAD\609204\Project_Drawing_Data\DWG\609204_HD(TYPSECT).dwg 5/14/2020 9:46 AM



BELMONT COMMUNITY PATH - PARALLEL WITH TRACKS
 STA 937+97 TO 956+01.73
 *0.5%± TOLERANCE FOR CONSTRUCTION
 SETBACK REDUCE TO 10.4' STA 953+73.04 TO 956+01.73
 CHAIN LINK FENCE REPLACES TIMBER RAIL STA 953+08.00RT TO 956+01.73RT
 SHOULDER REDUCE TO 1.00' STA 953+73.04 TO 956+01.73
 TRAIL REDUCED TO 10.00' STA 953+73.04 TO 956+01.73



BELMONT COMMUNITY PATH - 40 BELMONT STREET ABUTTING BUILDING
 STA 956+01.73 TO 956+89.10
 *0.5%± TOLERANCE FOR CONSTRUCTION

**BELMONT
 COMMUNITY PATH - PHASE 1
 BELMONT COMPONENT OF THE MCRT**

STATE	FED. AID PROJ. NO.	SHEET NO.	TOTAL SHEETS
MA	---	1	XX

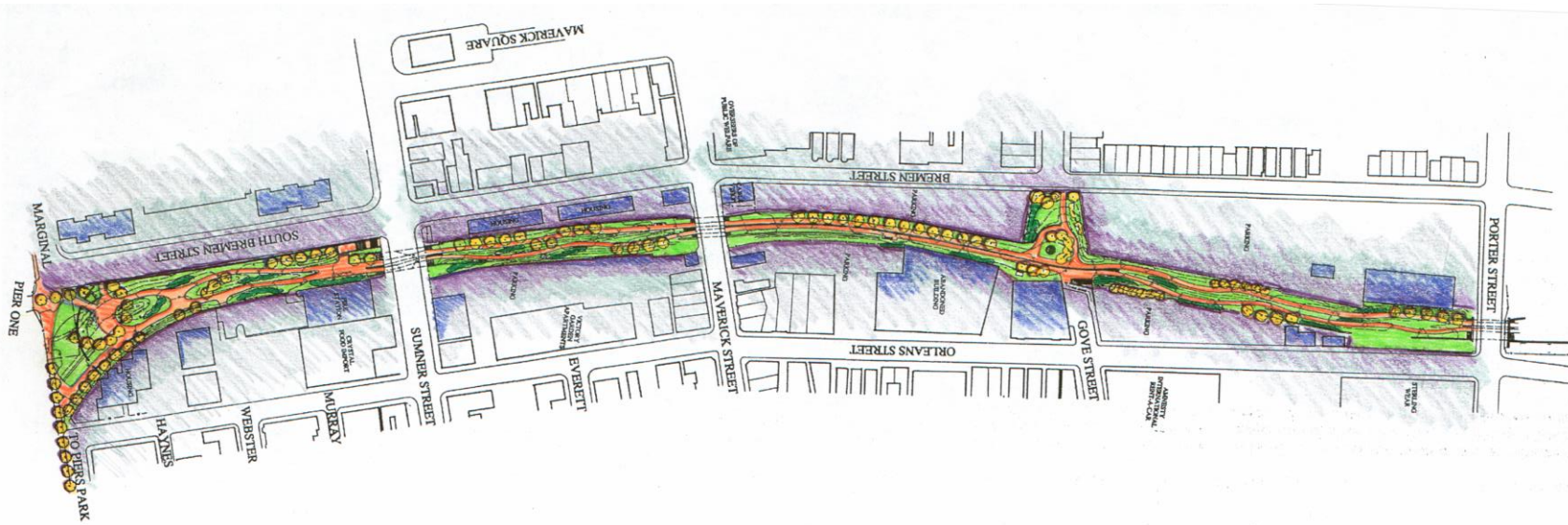
PROJECT FILE NO. 609204
CONSTRUCTION PLANS

PAVEMENT NOTES:

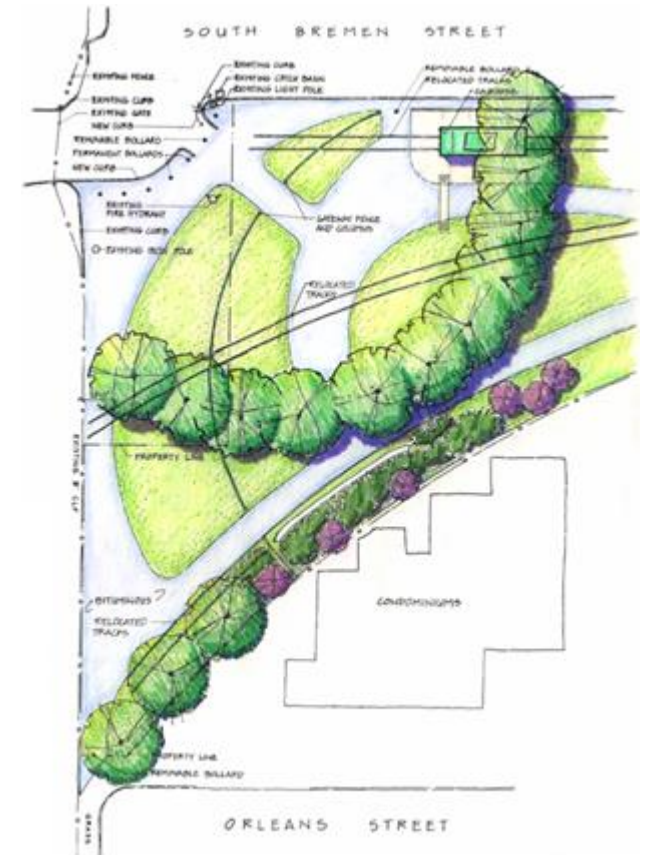
- PROPOSED HMA SHARED USE PATH**
- SURFACE: 1.5" SUPERPAVE SURFACE COURSE - 9.5 (SSC-9.5) OVER 2.5" SUPERPAVE INTERMEDIATE COURSE - 19.0 (SIC-19.0)
- SUBBASE: 8" GRAVEL BORROW, TYPE b*
- PROPOSED FULL DEPTH PAVEMENT**
- SURFACE: 4.00" HOT MIX ASPHALT (1.75" SUPERPAVE SURFACE COURSE - 12.5 POLYMER (SSC-12.5-P) OVER 2.25" SUPERPAVE INTERMEDIATE COURSE - 19.0 (SIC-19.0))
- BASE: 4.5" SUPERPAVE BASE COURSE - 37.5 (SBC-37.5)
- SUBBASE: 4" DENSE GRADED CRUSHED STONE FOR SUBBASE OVER 8" GRAVEL BORROW, TYPE b*
- PROPOSED FULL DEPTH PAVEMENT WIDENING LESS THAN 4 FEET**
- SURFACE: 1.75" SUPERPAVE SURFACE COURSE - 12.5 POLYMER (SSC-12.5-P) OVER 2.25" SUPERPAVE INTERMEDIATE COURSE - 19.0 (SIC-19.0)
- BASE: 6" HIGH EARLY STRENGTH CEMENT CONCRETE
- SUBBASE: 8" GRAVEL BORROW, TYPE b*
- PROPOSED CEMENT CONCRETE SIDEWALK/KCWR/ISLAND**
- SURFACE: 4" CEMENT CONCRETE SIDEWALK (4000 PSI, f'_c 610)
- SUBBASE: 8" GRAVEL BORROW, TYPE b*
- PROPOSED HOT MIX ASPHALT DRIVEWAY**
- SURFACE: 3.50" HOT MIX ASPHALT PLACED IN TWO LIFTS: (1.50" SUPERPAVE SURFACE COURSE - 12.5 POLYMER (SSC-12.5-P) OVER 2.00" SUPERPAVE INTERMEDIATE COURSE - 19.0 (SIC-19.0))
- SUBBASE: 8" GRAVEL BORROW, TYPE b*
- PROPOSED CEMENT CONCRETE SIDEWALK AT DRIVEWAY**
- SURFACE: 6" CEMENT CONCRETE SIDEWALK (4000 PSI, f'_c 610)
- SUBBASE: 8" GRAVEL BORROW, TYPE b*
- *EXISTING GRAVEL BORROW TYPE MEETING CONSTRUCTION AND MATERIAL SPECIFICATIONS SHALL BE RETAINED FOR USE ON SITE AS PROVIDED IN THE STANDARD SPECIFICATIONS FOR HIGHWAY AND BRIDGES.
- NOTES:**
- EMBANKMENT AND BACKFILL SHALL BE IN ACCORDANCE WITH STANDARD SPECIFICATIONS FOR HIGHWAYS AND BRIDGES.
 - ALL HOT MIX ASPHALT SHALL BE IN ACCORDANCE WITH SECTION 450 HOT MIX ASPHALT PAVEMENT AND SECTION M3 ASPHALTIC MATERIALS LATEST EDITION.

609204_HD(TYPSECT).DWG Printed on May 20, 2020 9:46 AM

Graphics/Illustrations



Site Plan

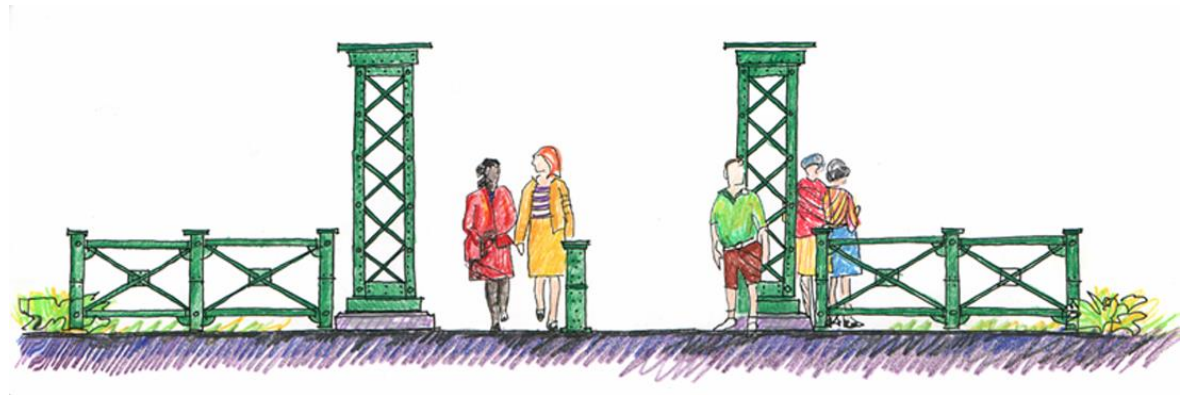


Enlargements at Key Locations

Graphics/Illustrations



Hand Sketches



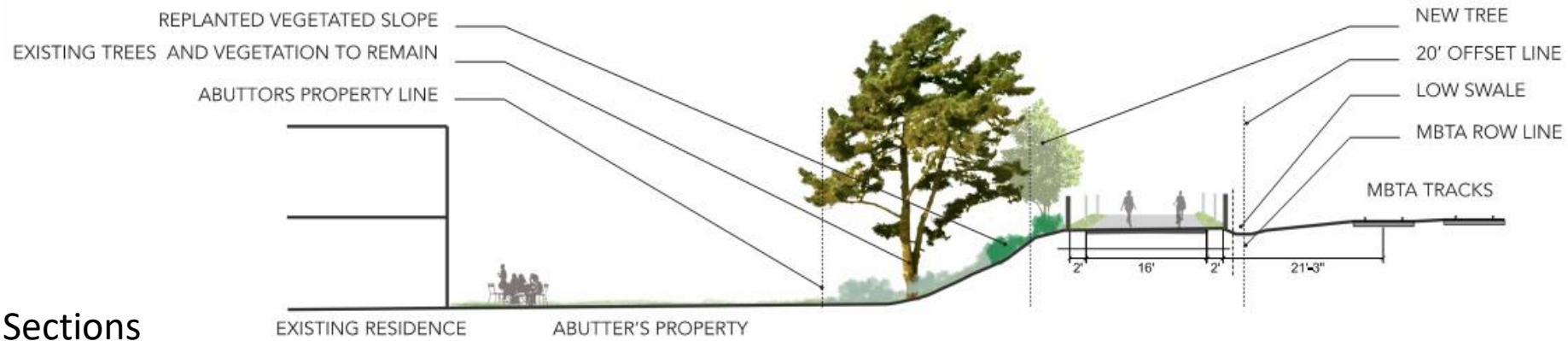
Graphics/Illustrations



Photoshop Renderings



Graphics/Illustrations



Sections



Existing Photos

Public Information Meeting – Planning Discussion

Discussion Topics:

1. Format (Virtual or in person?)
2. Meeting Facilitation & Process (purpose, meeting content, ground rules, constraints, opportunities for feedback)
3. Meeting Date
4. Purpose
 1. Share Project Purpose & Overall Timeline
 2. Project Updates:
 1. Present 25% Design
 3. Share vision of how path may look like (sketches of sections & intersections)
 4. Inform about Opportunities to provide feedback (at this Public Meeting and in future)
 1. Solicit Input
5. Information materials that will be shared