



**OFFICE OF COMMUNITY DEVELOPMENT  
TOWN OF BELMONT**

19 Moore Street  
Homer Municipal Building  
Belmont, Massachusetts 02478-0900

**TRANSPORTATION ADVISORY COMMITTEE**

**Thursday July 15, 2021**

**7:00 PM**

**Location – Remote Meeting**

**In keeping with Governor Baker’s Executive Order of March 12, 2020;**

**“Order Suspending Certain Provisions of the Open Meeting Law” -**

**All Participation by Committee and Town Residents will be by Remote Access**

**If the audio becomes unavailable, the meeting will be paused until it can be restored,  
or the meeting will end**

**FOR PARTICIPANTS:** The Transportation Advisory Committee will start at 7:00 PM and you may join the meeting remotely starting at 6:55 PM.

Leanne Fierro is inviting you to a scheduled Zoom meeting.

Topic: Transportation Advisory Committee Meeting

Time: Jul 15, 2021 07:00 PM Eastern Time (US and Canada)

Join Zoom Meeting

<https://us02web.zoom.us/j/89816810867?pwd=dkEvZGkvV211QkRXcnMzTGlvS9Fdz09>

Meeting ID: 898 1681 0867

Passcode: 967923

One tap mobile

+13126266799,,89816810867#,,,,\*967923# US (Chicago)

+19292056099,,89816810867#,,,,\*967923# US (New York)

Dial by your location

+1 312 626 6799 US (Chicago)

+1 929 205 6099 US (New York)

+1 301 715 8592 US (Washington DC)

+1 346 248 7799 US (Houston)

+1 669 900 6833 US (San Jose)

+1 253 215 8782 US (Tacoma)

Meeting ID: 898 1681 0867

Passcode: 967923

Find your local number: <https://us02web.zoom.us/j/89816810867?pwd=dkEvZGkvV211QkRXcnMzTGlvS9Fdz09>

**TRANSPORTATION ADVISORY COMMITTEE  
AGENDA**

# Thursday July 15, 2021

7:00 PM

Location – Remote Meeting

- 7:00** Call to Order
- 7:00 – 8:00** Concord Avenue Student Parking and Drop-off / Pick-up  
- Proposal by Belmont Middle and High School Building Committee
- 8:00 – 8:10** Approval of Minutes
- 8:10 – 8:15** Old Business
- No Known Items
- 8:15 – 8:20** New Business
- No Known Items
- 8:20** Adjourn



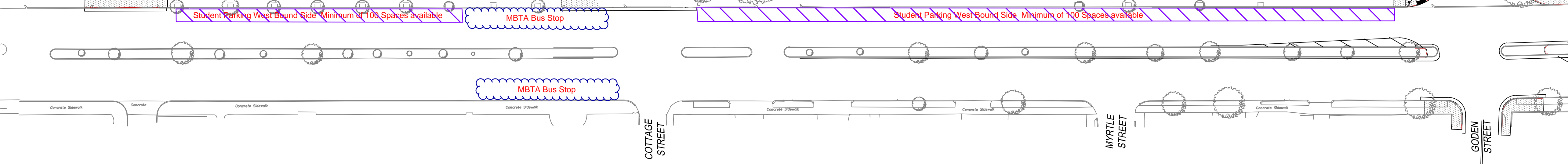
ICE RINK

Student Parking West Bound Side Minimum of 100 Spaces available

MBTA Bus Stop

Student Parking West Bound Side Minimum of 100 Spaces available

MBTA Bus Stop

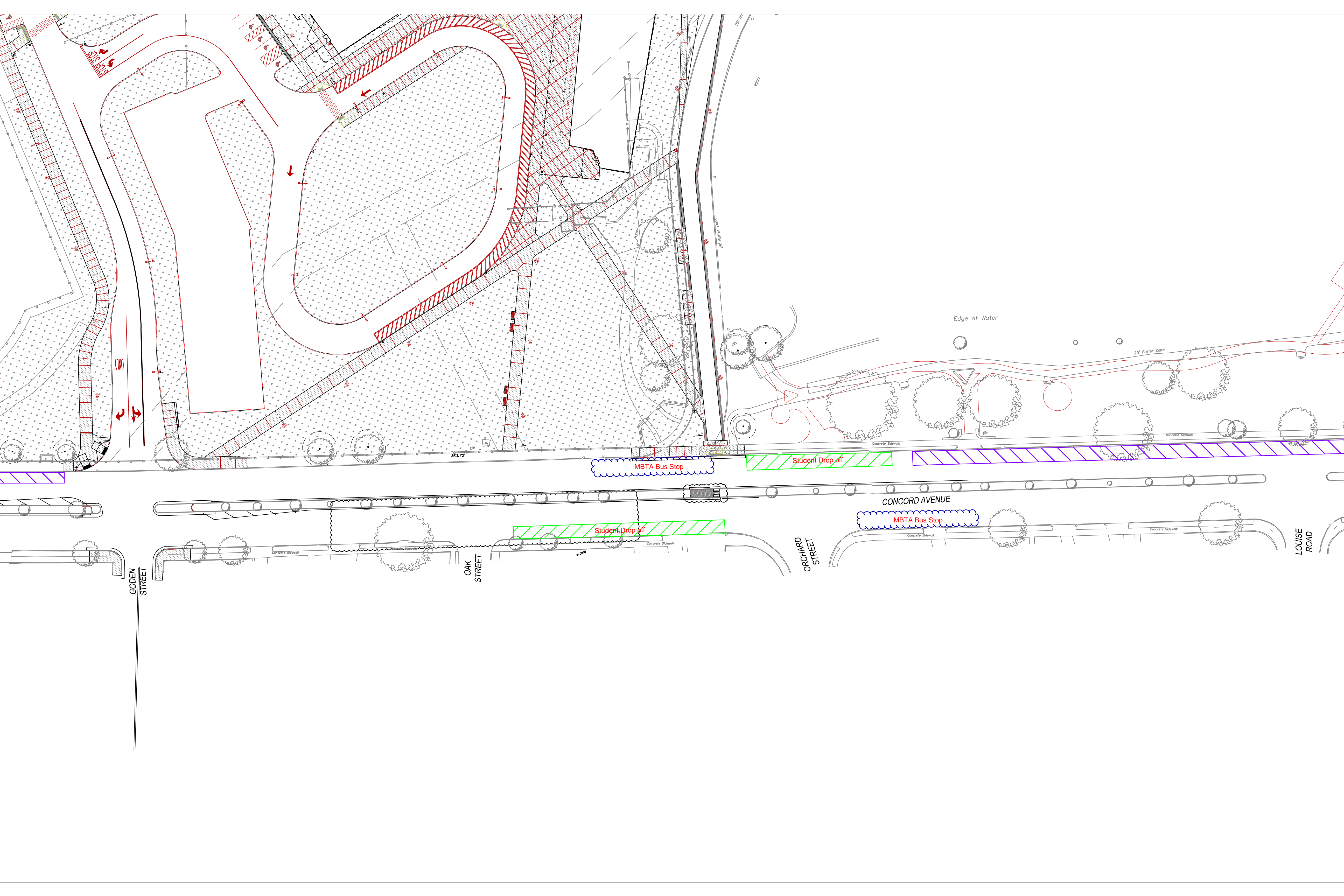


COTTAGE STREET

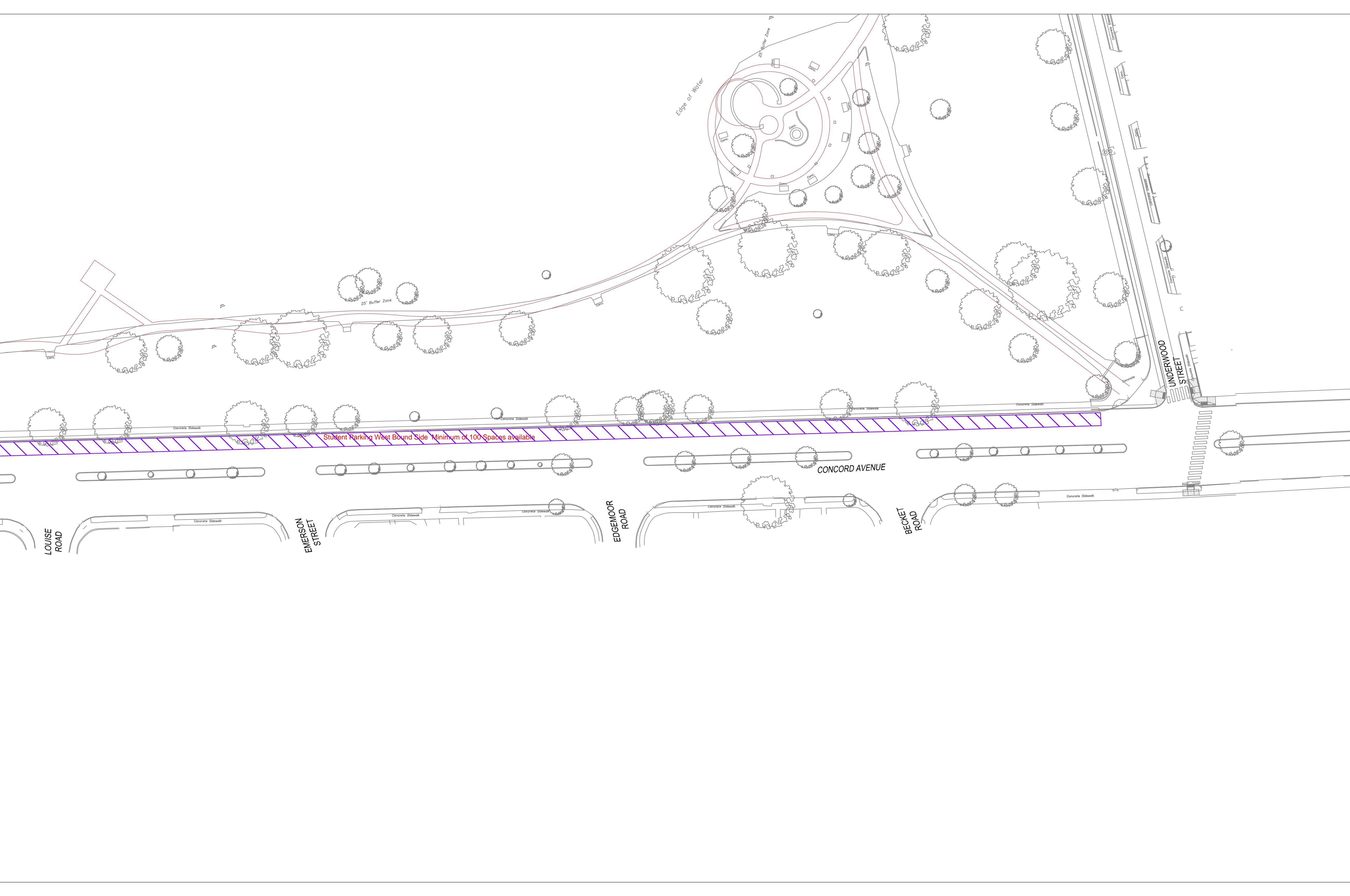
MYRTLE STREET

GODEN STREET









Edge of Water

25' Buffer Zone

Student Parking West Bound Side Minimum of 100 Spaces available

LOUISE ROAD

EMERSON STREET

EDGEMOOR ROAD

CONCORD AVENUE

BECKET ROAD

UNDERWOOD STREET

Concrete Sidewalk

Concrete Sidewalk

Concrete Sidewalk

Concrete Sidewalk

Concrete Sidewalk

Concrete Sidewalk

Concrete Sidewalk

Concrete Sidewalk

Concrete Sidewalk

Concrete Sidewalk

Concrete Sidewalk

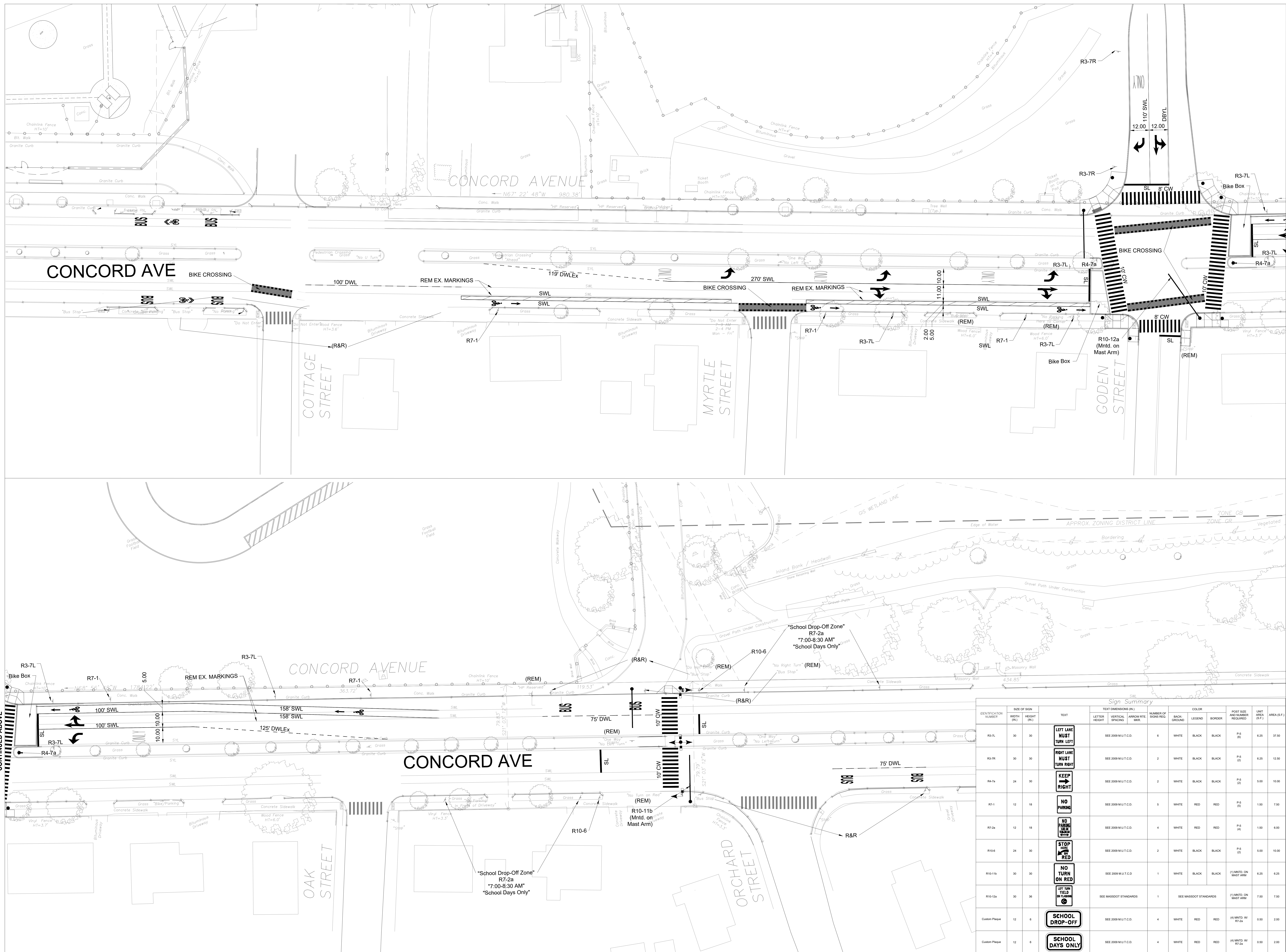
Concrete Sidewalk

Concrete Sidewalk

Concrete Sidewalk

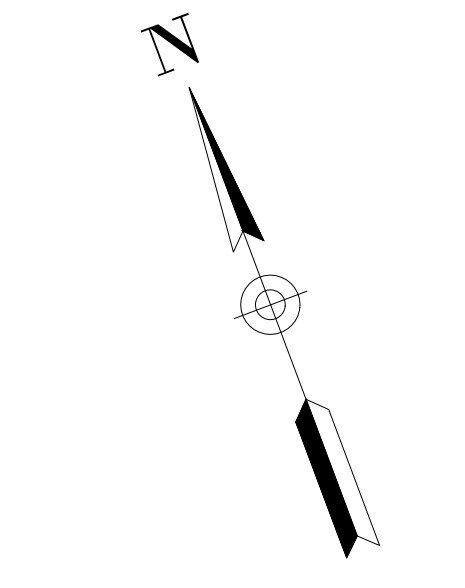
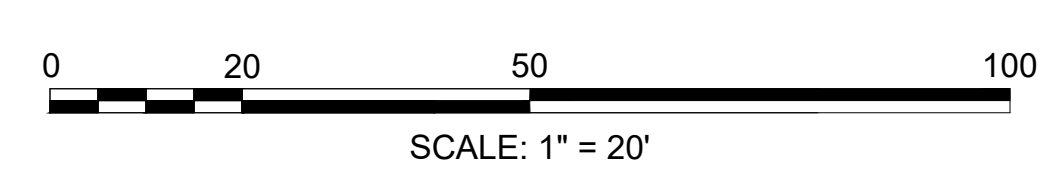
Concrete Sidewalk





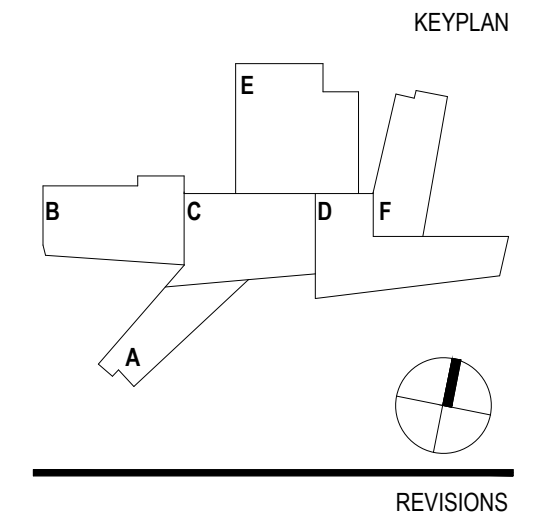
Sign Summary													
IDENTIFICATION NUMBER	SIZE OF SIGN	TEXT	TEXT DIMENSIONS (IN)	COLOR	POST SIZE AND NUMBER REQUIRED	LIMIT AREA (S.F.)	AREA (S.F.)						
	WIDTH (IN)	HEIGHT (IN)	LETTER HEIGHT	VERTICAL SPACING	ARROW W/TE. MARK	NUMBER OF SIGN BECS	BACK-GROUND	LEGEND	BORDER				
R3-7L	30	30				SEE 2006 M.U.T.C.D.	6	WHITE	BLACK	BLACK	P-6 (R)	6.25	37.50
R3-7R	30	30				SEE 2006 M.U.T.C.D.	2	WHITE	BLACK	BLACK	P-6 (R)	6.25	15.00
R6-7a	24	30				SEE 2006 M.U.T.C.D.	2	WHITE	BLACK	BLACK	P-6 (R)	5.00	15.00
R7-1	12	18				SEE 2006 M.U.T.C.D.	3	WHITE	RED	RED	P-6 (R)	1.50	7.50
R7-2a	12	18				SEE 2006 M.U.T.C.D.	4	WHITE	RED	RED	P-6 (R)	1.50	6.00
R10-6	24	30				SEE 2006 M.U.T.C.D.	2	WHITE	BLACK	BLACK	P-6 (R)	5.00	15.00
R10-11b	30	30				SEE 2006 M.U.T.C.D.	1	WHITE	BLACK	BLACK	FLUORESCENT ON MAST ARM	6.25	6.25
R10-12a	30	36				SEE MASSDOT STANDARDS	1	SEE MASSDOT STANDARDS			FLUORESCENT ON MAST ARM	7.50	7.50
Custom Plaque	12	6				SEE 2006 M.U.T.C.D.	4	WHITE	RED	RED	FLUORESCENT W/ RED	0.50	2.00
Custom Plaque	12	6				SEE 2006 M.U.T.C.D.	4	WHITE	RED	RED	FLUORESCENT W/ RED	0.50	2.00

NOTES: 1. BASE MAP PREPARED BY OTHERS, SUPPLEMENTED WITH EXISTING PAVEMENT MARKINGS FROM AERIAL IMAGERY. CONTRACTOR SHALL VERIFY LOCATION, DIMENSIONS, AND PRESENCE OF ALL UNDERGROUND UTILITIES.  
2. EXISTING SIGNS AND PAVEMENT MARKINGS SHALL BE RETAINED UNLESS OTHERWISE NOTED



PROJECT  
**BELMONT MIDDLE AND HIGH SCHOOL**  
201 CONCORD AVE  
BELMONT, MA 02478

TOWN OF BELMONT



MARK	ISSUE	DATE
4	CCD-347	07/02/2021
3	CCD-297	03/23/2021
2	CCD-384	02/09/2021
1	CCD-234	12/22/2020

CONFORMED SET  
02.06.2020

JOB NUMBER 153003.001  
DRAWN CKS/TL  
CHECKED SOA  
TITLE

PAVEMENT MARKING PLAN  
CONCORD AVENUE

TS-100a