

For discussion and vote by Select Board:

Parking Restrictions on Side Streets Near Belmont High School for 2022-2023 School Year

The Traffic Working Group—Middle and High School recommends continuation of the parking restrictions in effect in Spring 2022 with certain modifications, as described in the following proposed motions.

Moved:

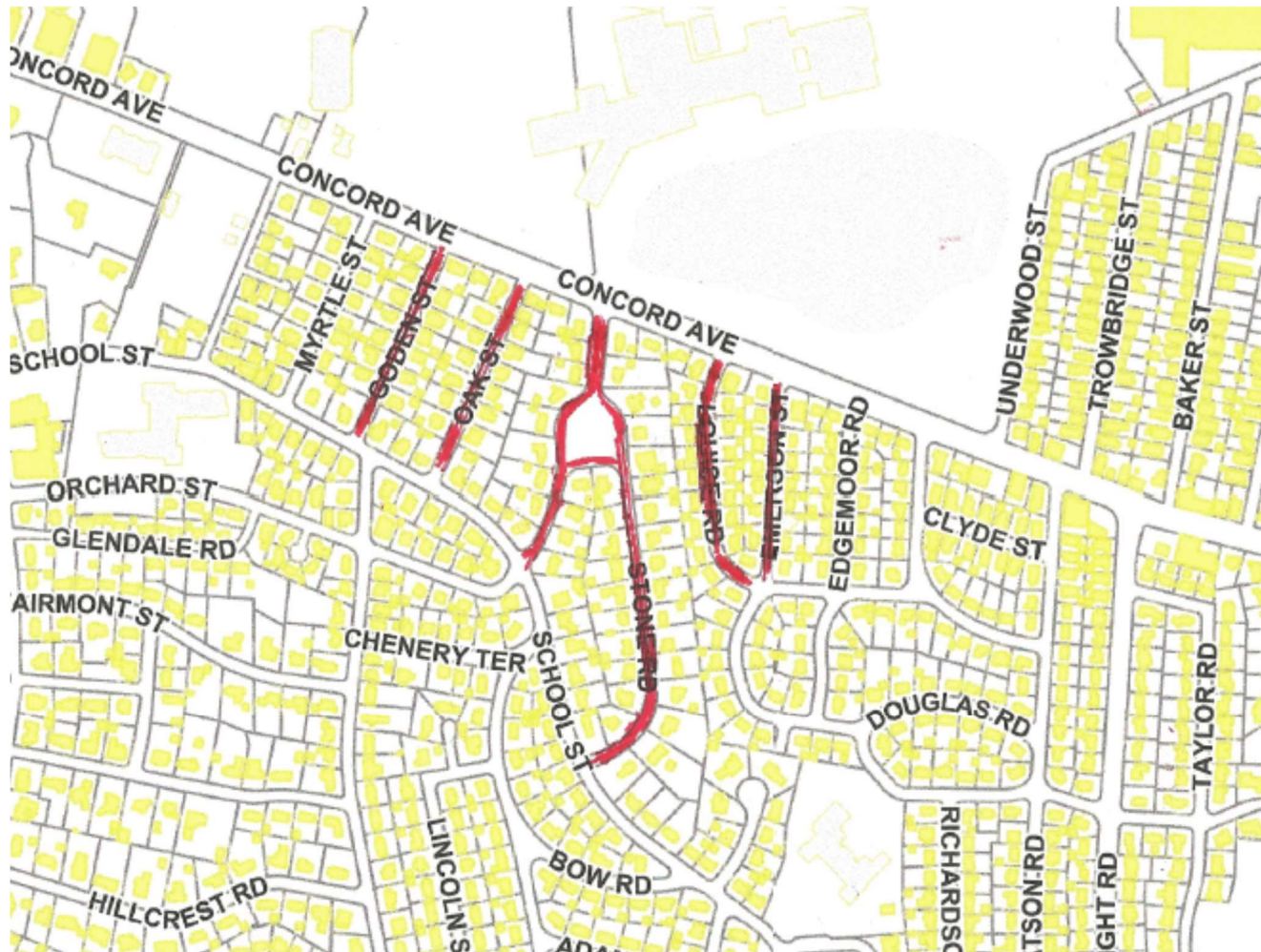
1. That the following streets be posted as no parking from **7 am to 11 am** when school is in session:

Goden St (below School)
Oak St
Orchard St (below School)
Orchard Circle
Stone Rd
Louise Rd
Emerson St

These restrictions will not apply to commercial vehicles, vehicles on public business, or vehicles that display a valid parking placard.

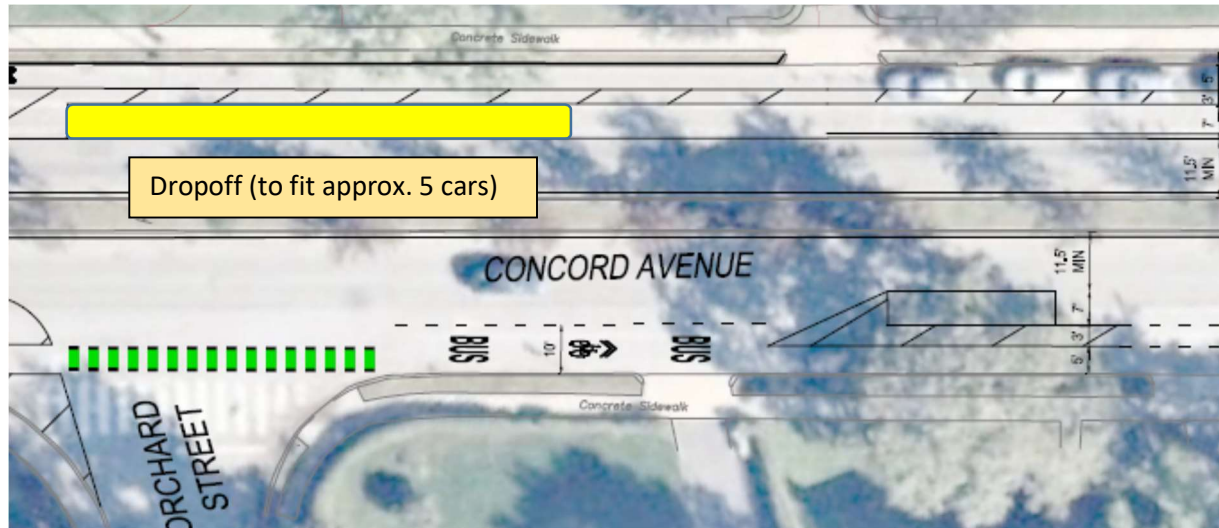
2. DROPOFF/PICKUP: That the parking spaces on Concord Ave (south side) between Goden St and Orchard St be posted as no parking from 7 am to 11 am and from 2 pm to 3 pm when school is in session. These restrictions will not apply to commercial vehicles, vehicles on public business, or vehicles that display a valid parking placard.
3. DROPOFF/PICKUP: That the parking spaces on Concord Ave (north side) from the start of the parking zone opposite Orchard St and extending east for 100 feet be posted as no parking from 7 am to 9 am and from 2 pm to 3 pm when school is in session.
4. That Concord Ave (south side) from Goden St to the driveway at 258 Concord Ave be posted as no parking/no stopping.
5. That Orchard St (southbound) from Concord Ave to ten feet past the fire hydrant in front of 3 Orchard St be posted as no parking/no stopping.

7 AM-11 AM RESTRICTIONS ON SIDE STREETS NEAR BHS (OUTLINED IN RED)



CONCORD AVE DROPOFF AREAS

Concord (westbound)



Concord (eastbound) Goden to Orchard

