

Transportation Advisory Committee Belmont Center Improvements



TAC Forum #1 – Existing Conditions
Town of Belmont

October 14, 2010

Purpose of Project

1. Analyze alternatives
2. Determine preferred alternative relative to:
 - Roadway
 - Sidewalk
 - Parking
 - Landscape
3. Initiate design & construction

Participants

Linda Nickens Belmont Traffic Advisory Committee

Glenn Clancy Belmont Town Engineer

Peter Briere Traffic Engineer, BSC Group

Marybeth Murphy Landscape Architect, BSC Group

Charles Kalauskas Planner, BSC Group

Project Schedule

BELMONT CENTER - PROJECT DEVELOPMENT

PROJECT SCHEDULE

(Revised 9/20/2010)

	YEAR MONTH WEEK ENDING	(Revised 9/20/2010)																																																							
		AUG							SEP							OCT							NOV							DEC							2011 JAN							FEB							MAR						
		7	14	21	28	4	11	18	25	2	9	16	23	30	6	13	20	27	4	11	18	25	2	9	16	23	30	6	13	20	27	6	13	20	27																						
1	Research																																																								
2	Base Plan Preparation																																																								
3	Data Collection & Analysis																																																								
4	Conceptual Rdwy D & A																																																								
5	Conceptual Streetscape																																																								
6	Parking Management																																																								
7.1	Kick Off																																																								
7.2	Public Part. TAC #1																																																								
7.3	8 Alternatives TAC #2																																																								
7.5	2 Alternatives TAC #3																																																								
7.6	Preferred TAC #4																																																								
7.7	Meeting with Selectmen																																																								

Process

Transportation Advisory Committee #1 (October 14, 2010)

- Previous Studies
- Existing Conditions
 - Study Area Context
 - Land Use
 - Landscape
 - Transportation
- Public Input (Opportunities, Challenges, Suggestions)

Process

Transportation Advisory Committee #2 (Thursday November 4, 2010)

- Seven or Eight Traffic Patterns
- Pros and Cons of Each
- Select Two Preferred Alternatives

Process

Transportation Advisory Committee #3 (Thursday December 9, 2010)

- Review Two Traffic Circulation Plans
- Review Associated Streetscape
- Discuss Parking Alternatives
- Select Preferred Alternative
- Solicit Public Input

Process

Transportation Advisory Committee #4 (Thursday January 13, 2011)

- Present Preferred Roadway/Sidewalk Plan
- Present Preferred Landscape Plan
- Present Parking Plan
- Solicit Input

Process

Board of Selectmen

(Monday January 24, 2011)

- Present Planning Process
- Present Preferred Plan
- Initiate Public Discussion

Previous Studies

1986 Belmont Commercial Areas Study

- Eliminated parking meters, installed timed parking restrictions
- Initiated long-term parking in Claflin Street lot
- Recommended:
 - Favoring pedestrians over vehicles
 - Establishing angle parking on Leonard Street
 - Encouraging more restaurants

Previous Studies

1987 Controlling Belmont's Traffic

- Concerned about increasing traffic

Leonard Street	
<u>Year</u>	<u>Volumes</u>
1972	12,000
1984	13,508
1986	14,000
1988	15,918

- Recommended improvements at key intersections

Previous Studies

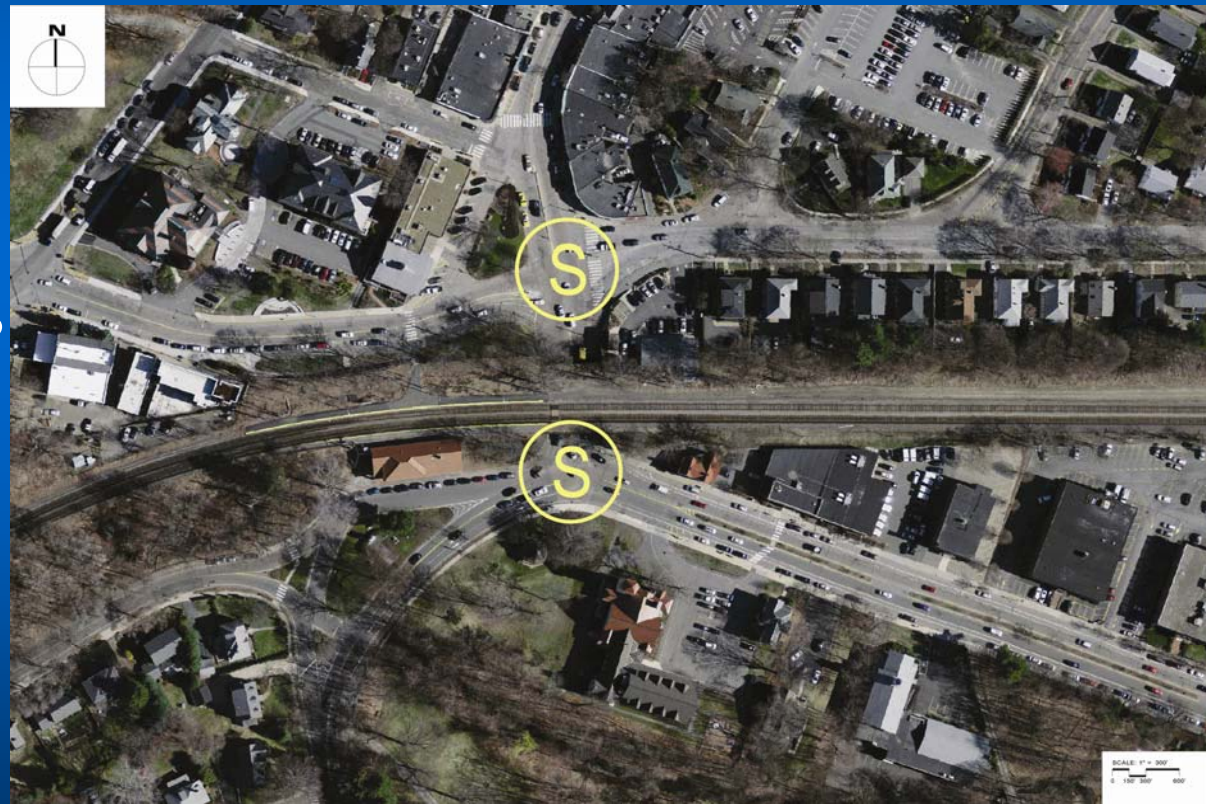
1989 Belmont Center, A Development Plan

- Belmont Center Committee, public meetings, two years
- Prohibited some left turns during peak hours
- Added traffic island
- Added benches and trees
- Recommended
 - Adding Ornamental Street Lighting
 - Improving Sidewalk Materials
 - Closing Leonard Street Extension
 - Adding Crosswalks

Previous Studies

1996 Belmont Center Traffic Improvements

Looked at
traffic
improvements
at the railroad
crossing



Previous Studies

1997 Belmont Bikeway – Preliminary Feasibility Analysis

- Mass Central Rail Trail; Boston to Northampton
- Identified Alternate Routes through the Center

Previous Studies

2001 Municipal Parking Study

- Proposed Claflin Street Changes
- Recommended
 - Adding on-street parking
 - Uniform two hour parking restriction
 - Intermittent 15 minute parking areas

Previous Studies

2005 – 2008 A Planning Vision for Belmont Center

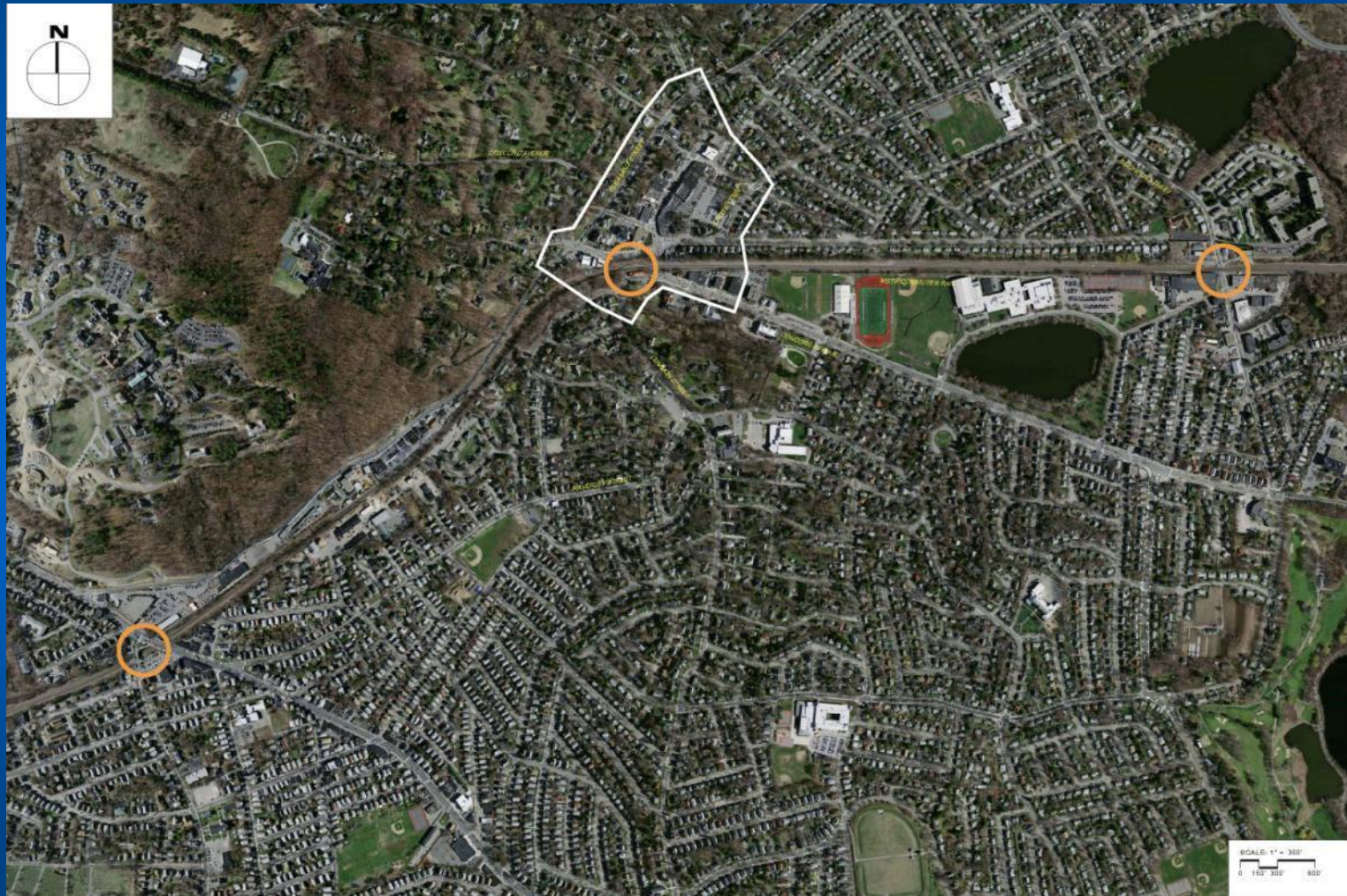
- Belmont Center Planning Group
- Met most every Friday for three years
- Charette April 2006
- Report March 2008
- Specific Short and Long Term Recommendations

Previous Studies

2008 Belmont Comprehensive Plan

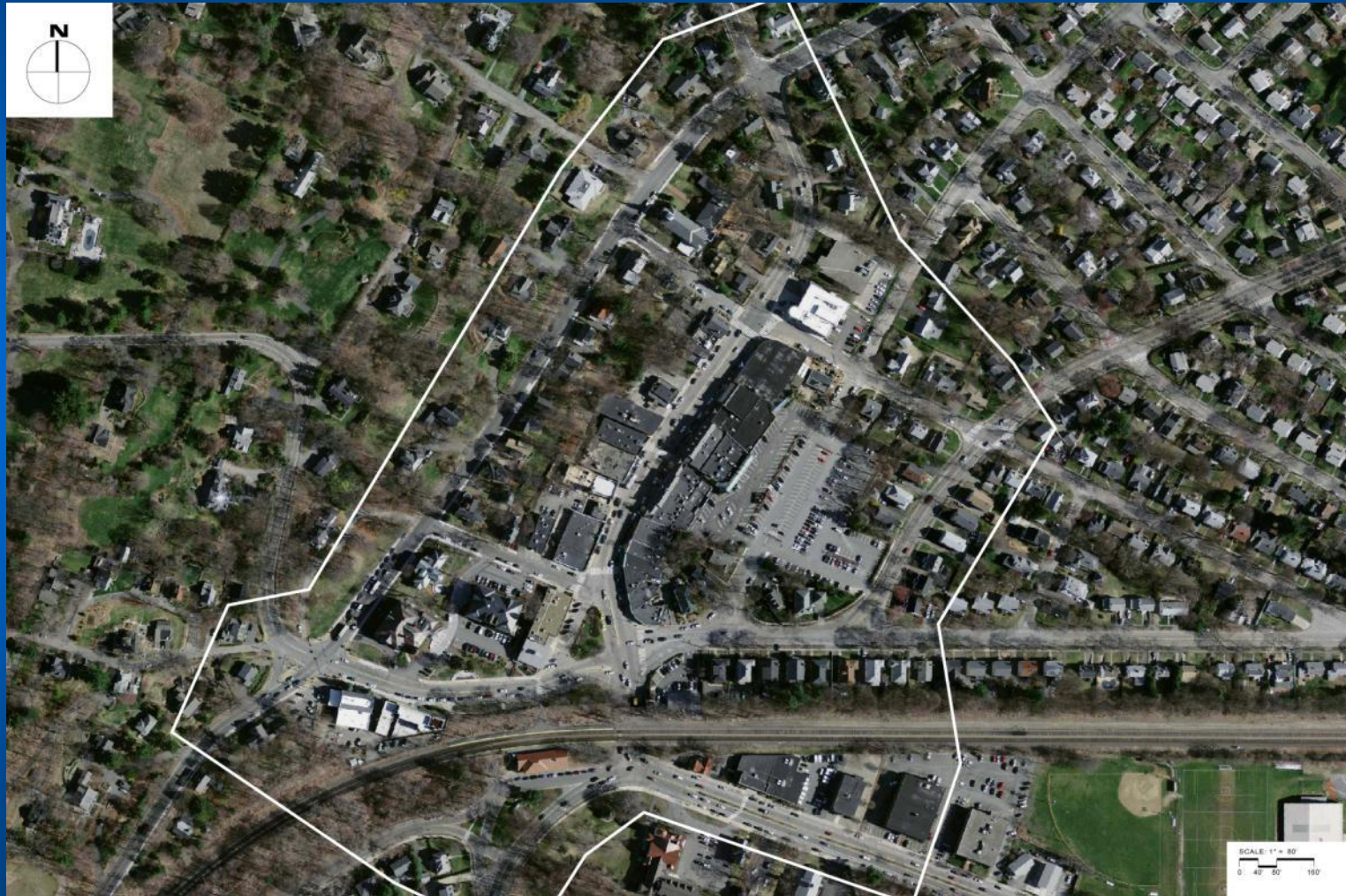
- Parking Workshop Summary – Two (June 12 and 24)
- Parking Review
 - Sufficient parking but convenient spaces filled
 - Claflin Street lot confusing, poor for pedestrians
 - Recommended smart parking meters
 - Recommended angle parking
- Public transportation access
 - Current parking policy discourages the use of rail stations

Study Area Context Overview



Study Area Context

Belmont Center



Study Area Context



Study Area Context



Study Area Context

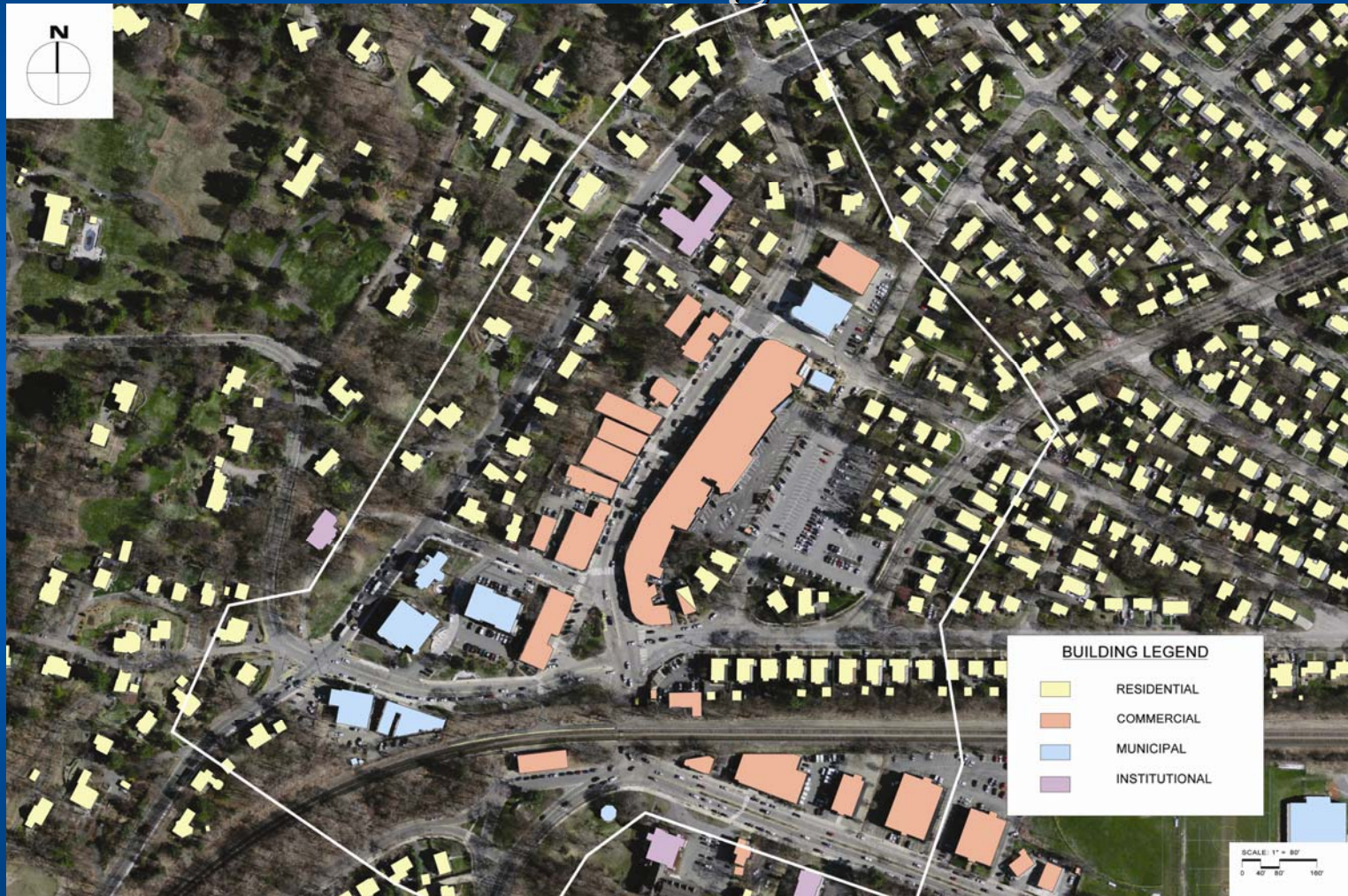


Study Area Context



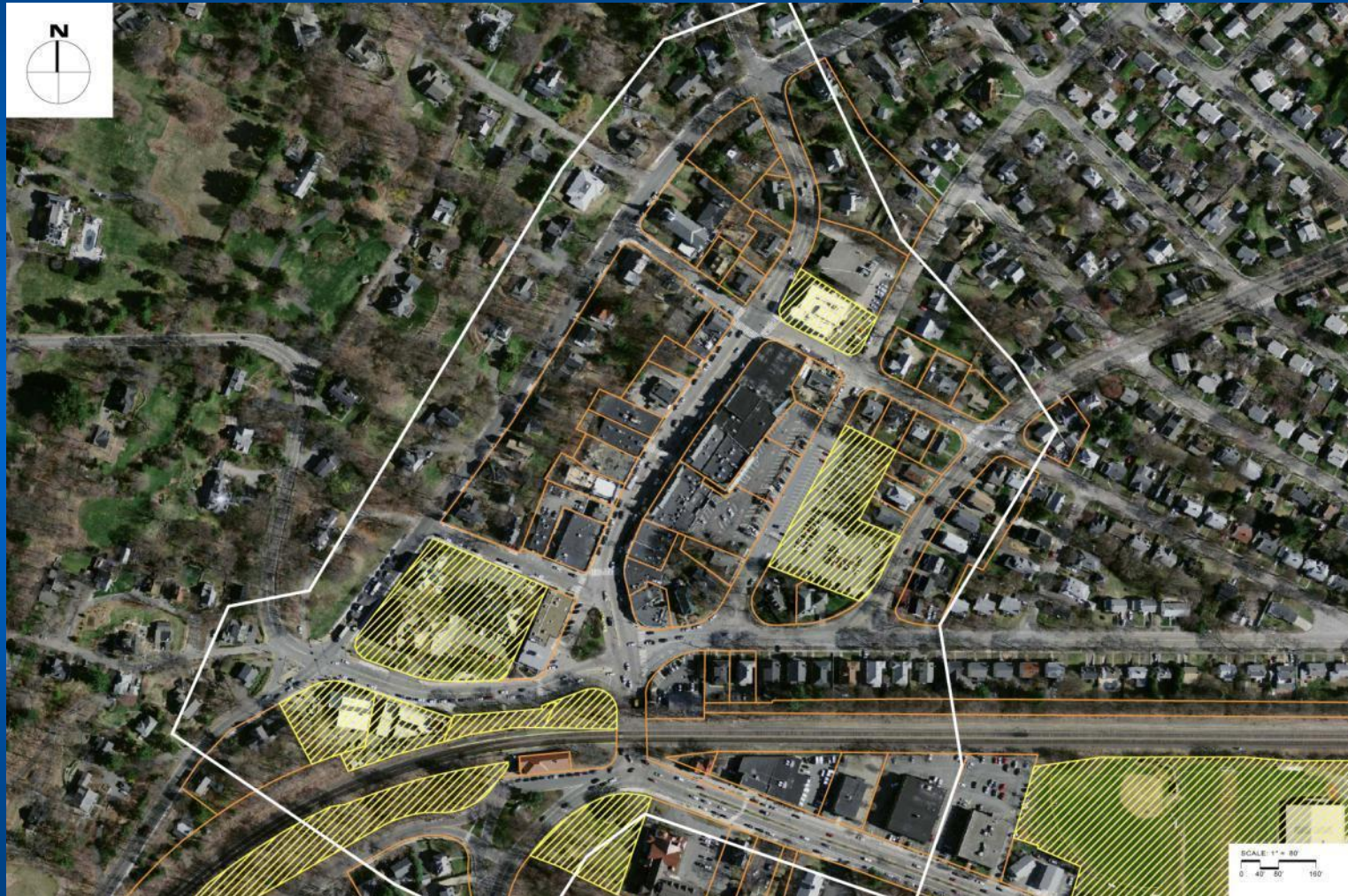
Land Use

Building Uses

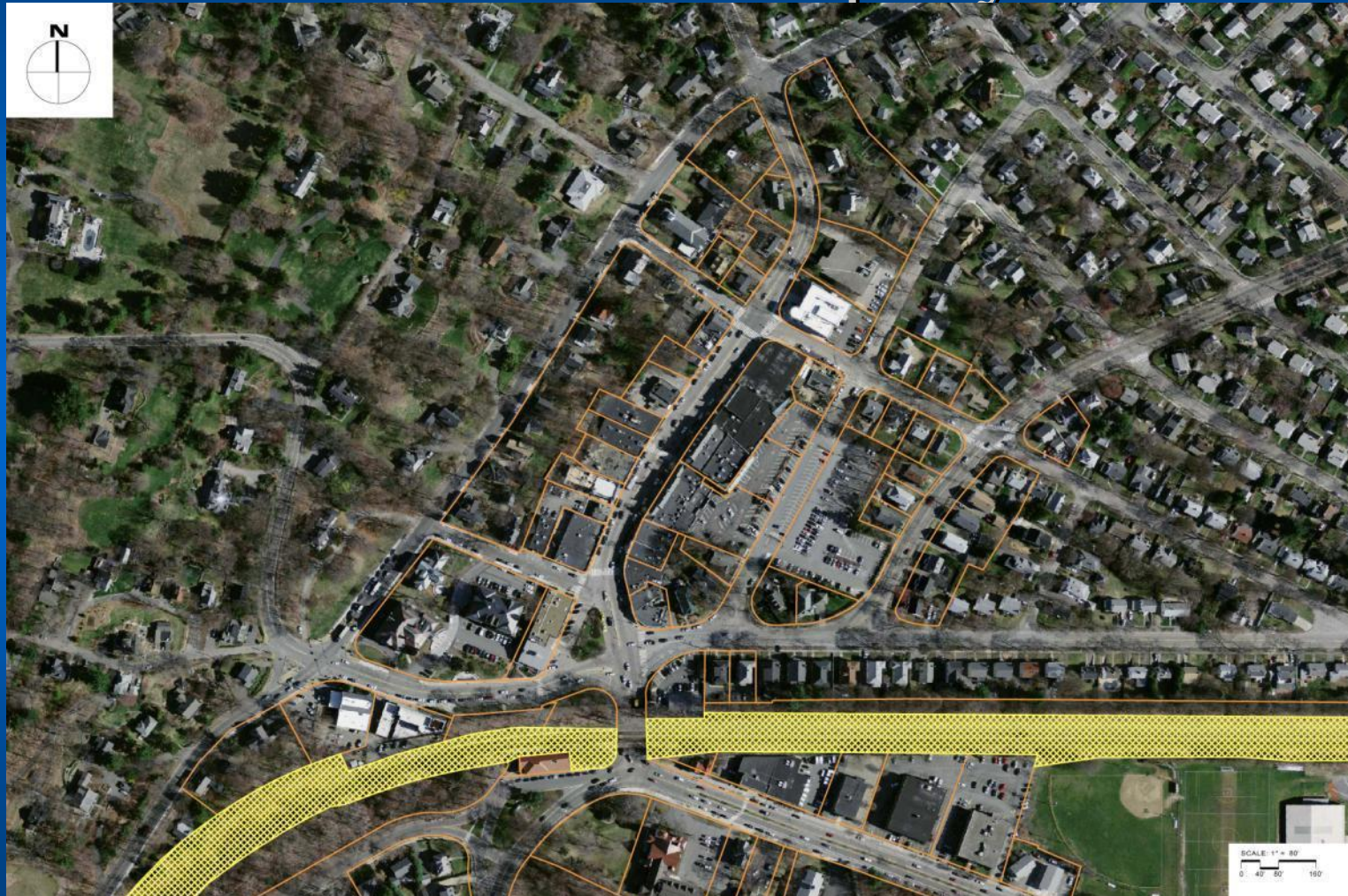


Land Use

Town-Owned Properties



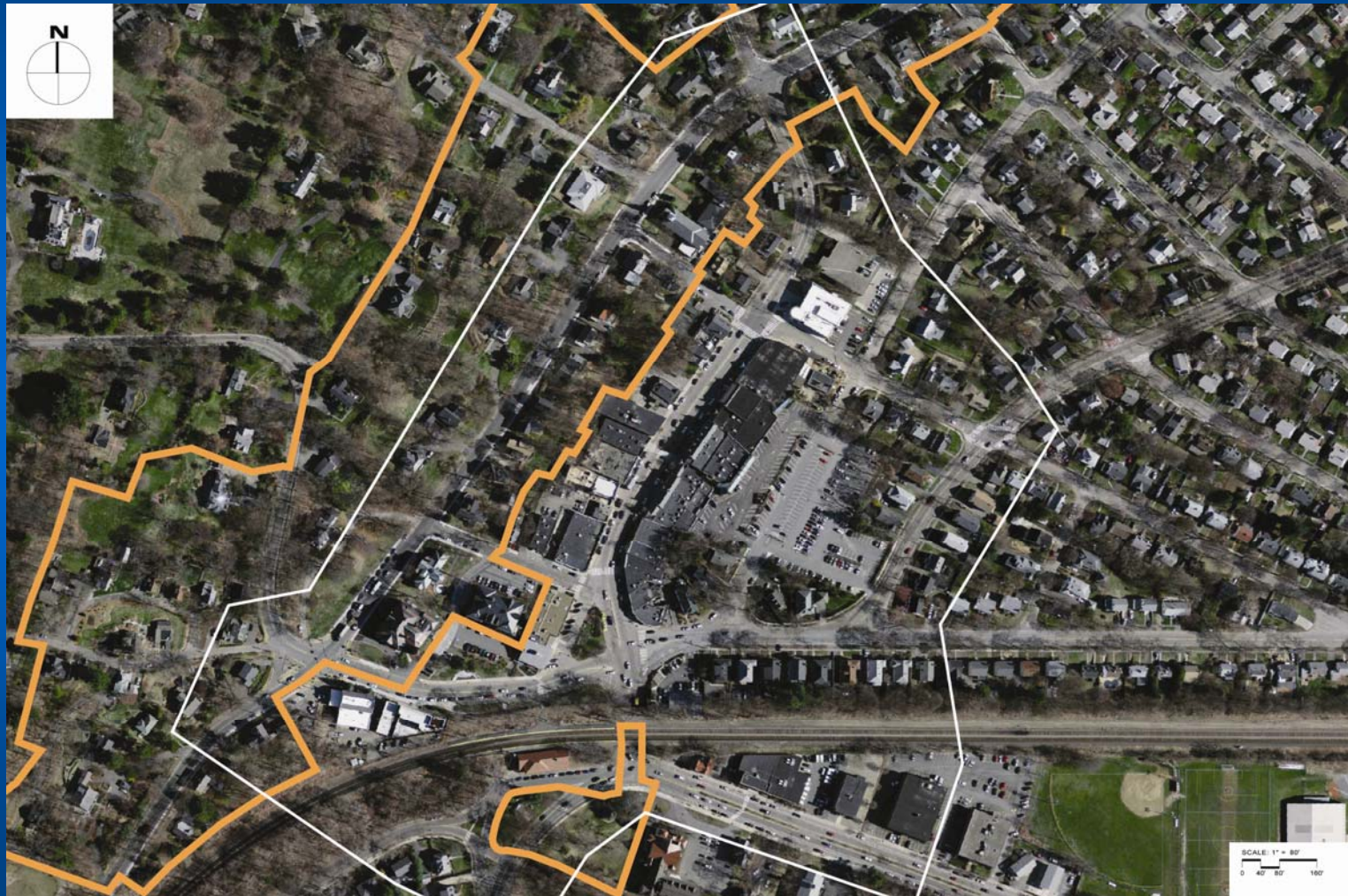
Land Use Railroad Property



Land Use Green Space



Land Use Historic District



Land Use

Historic Buildings



Land Use

Historic Buildings



Land Use - Historic

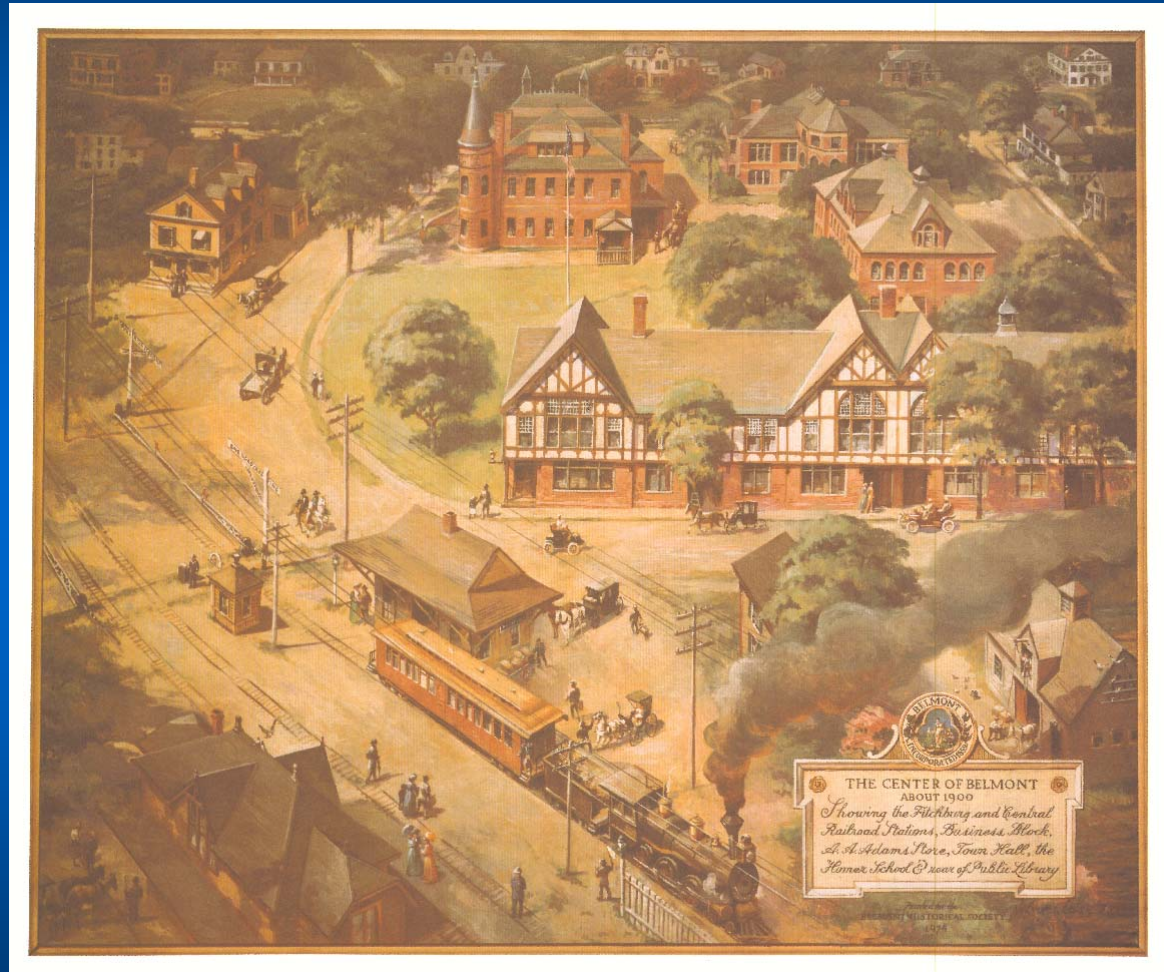


Image Courtesy of the Belmont Historical Society

Streetscape Images



Images Courtesy of the Belmont Historical Society

Streetscape Images - Sidewalks



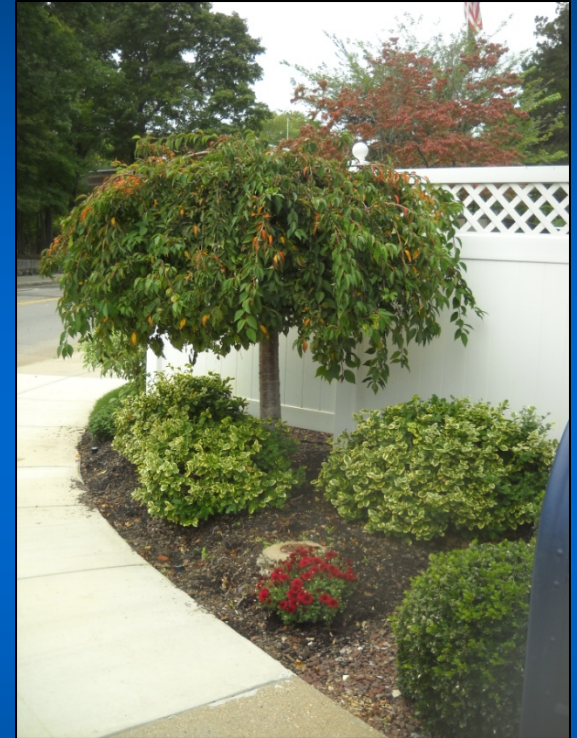
Streetscape Images – Sidewalks



Streetscape Images – Sidewalks



Streetscape Images - Planting

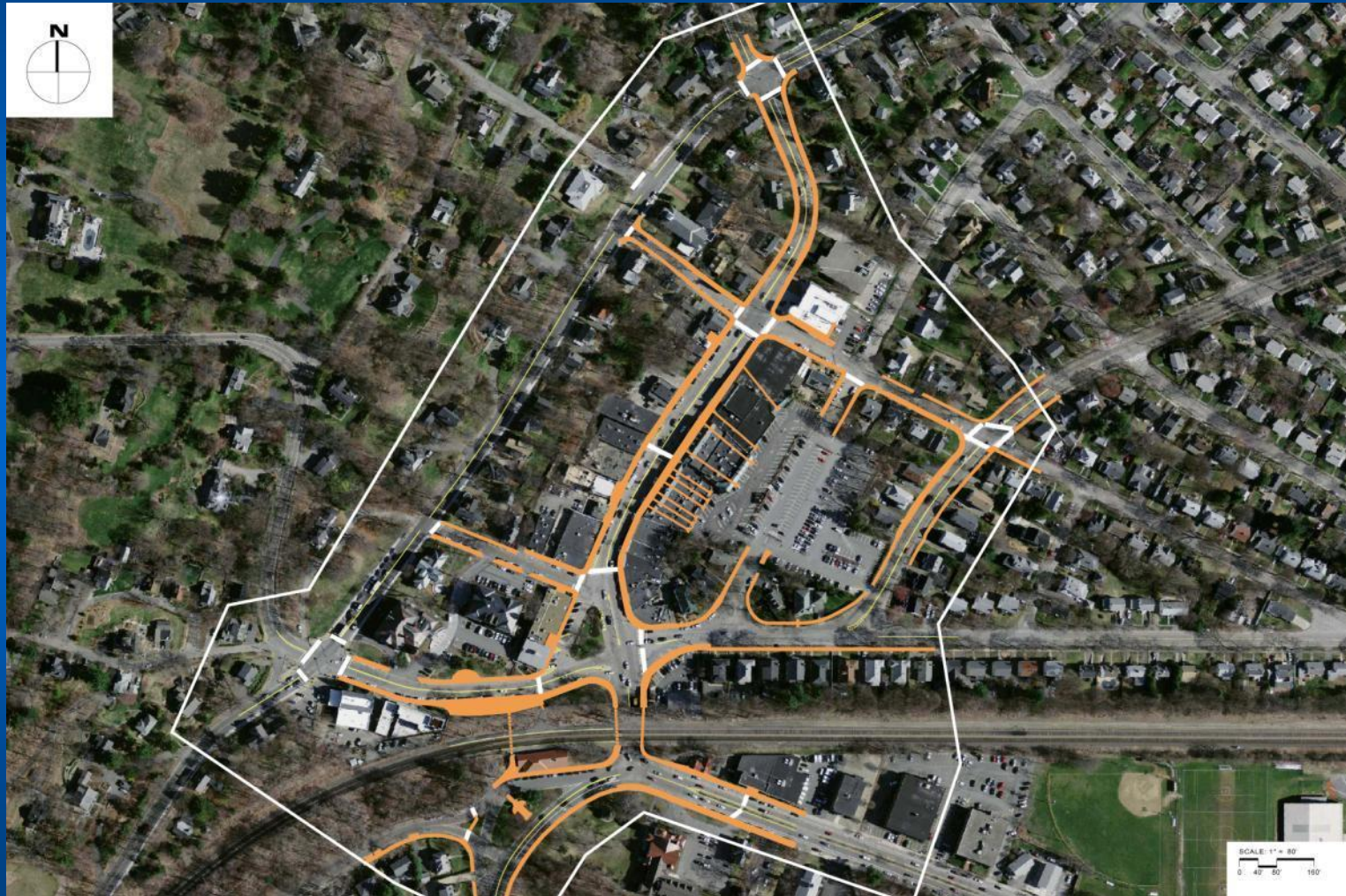


Streetscape Images - Furnishings



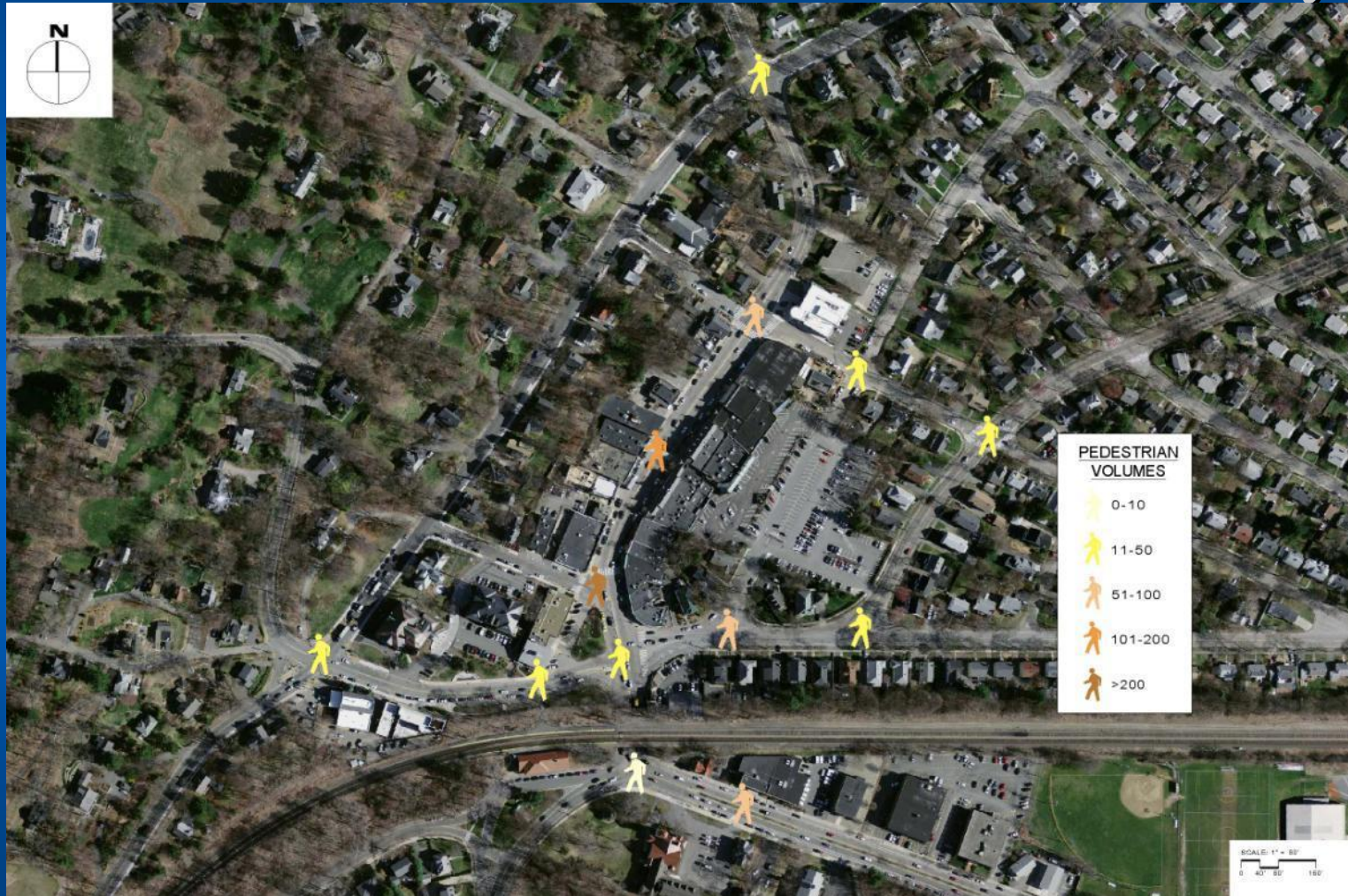
Land Use

Pedestrian Accommodations

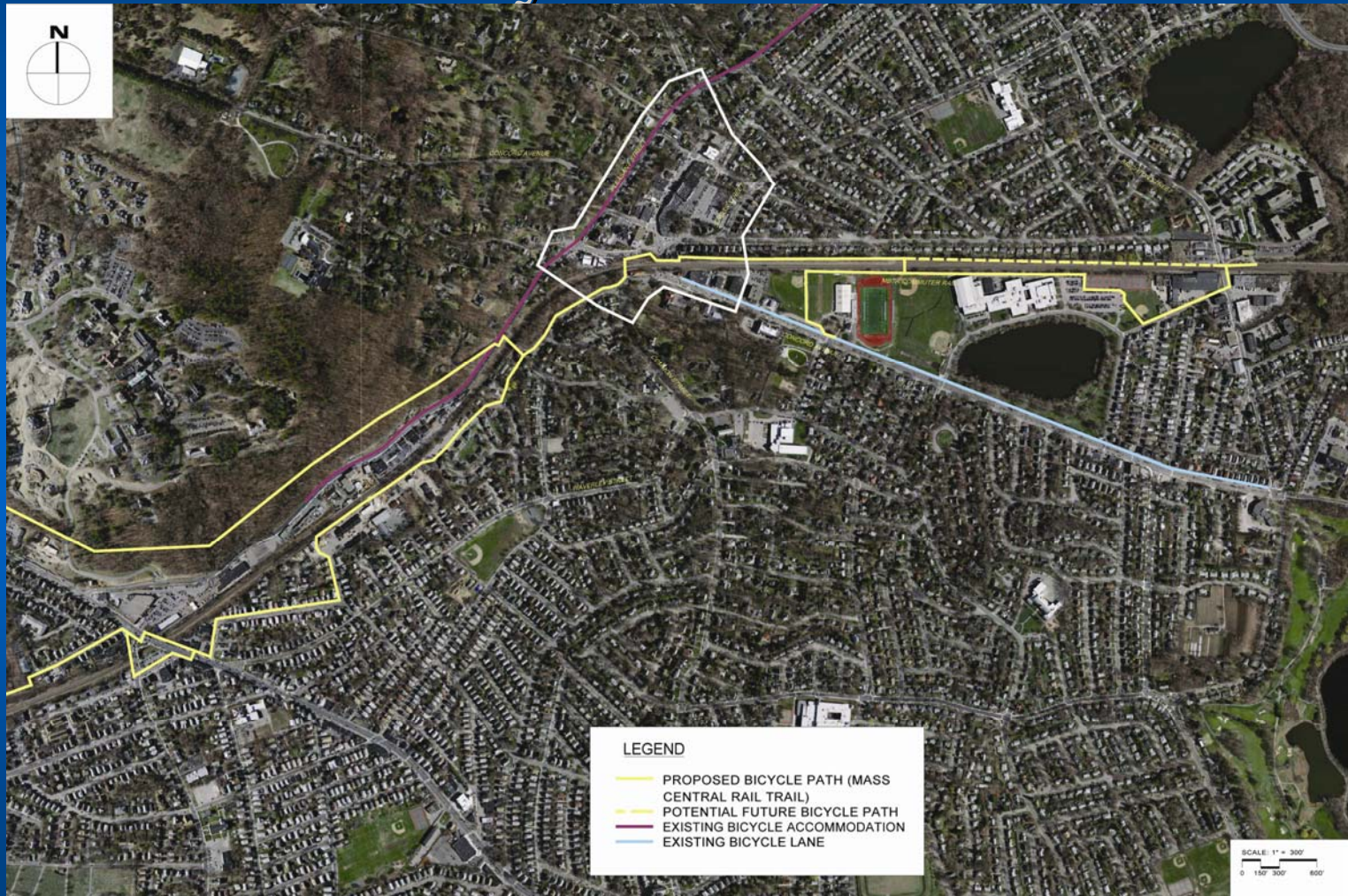


Transportation

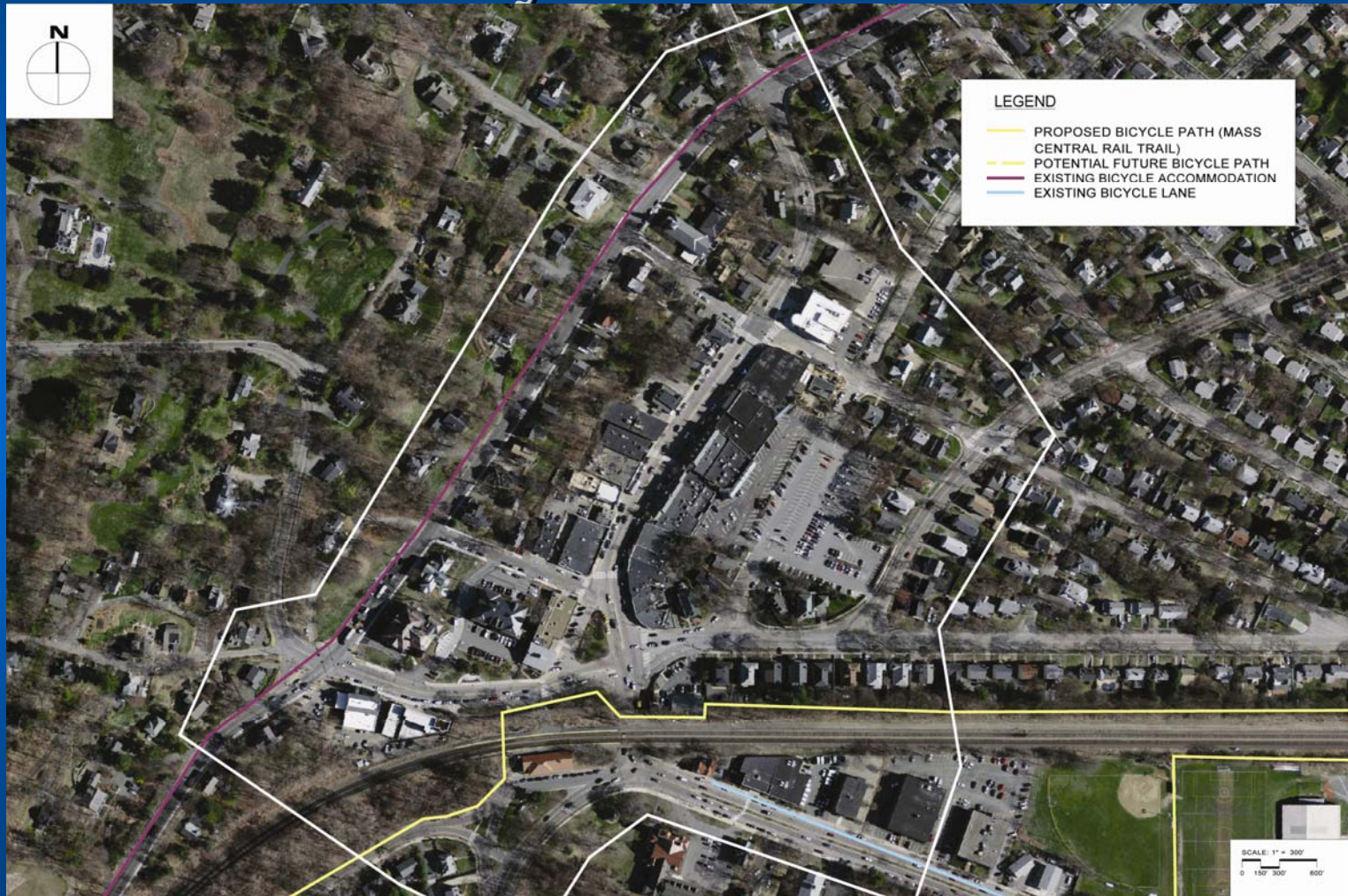
Afternoon Peak Hour Pedestrian Activity



Transportation Bicycle Provisions

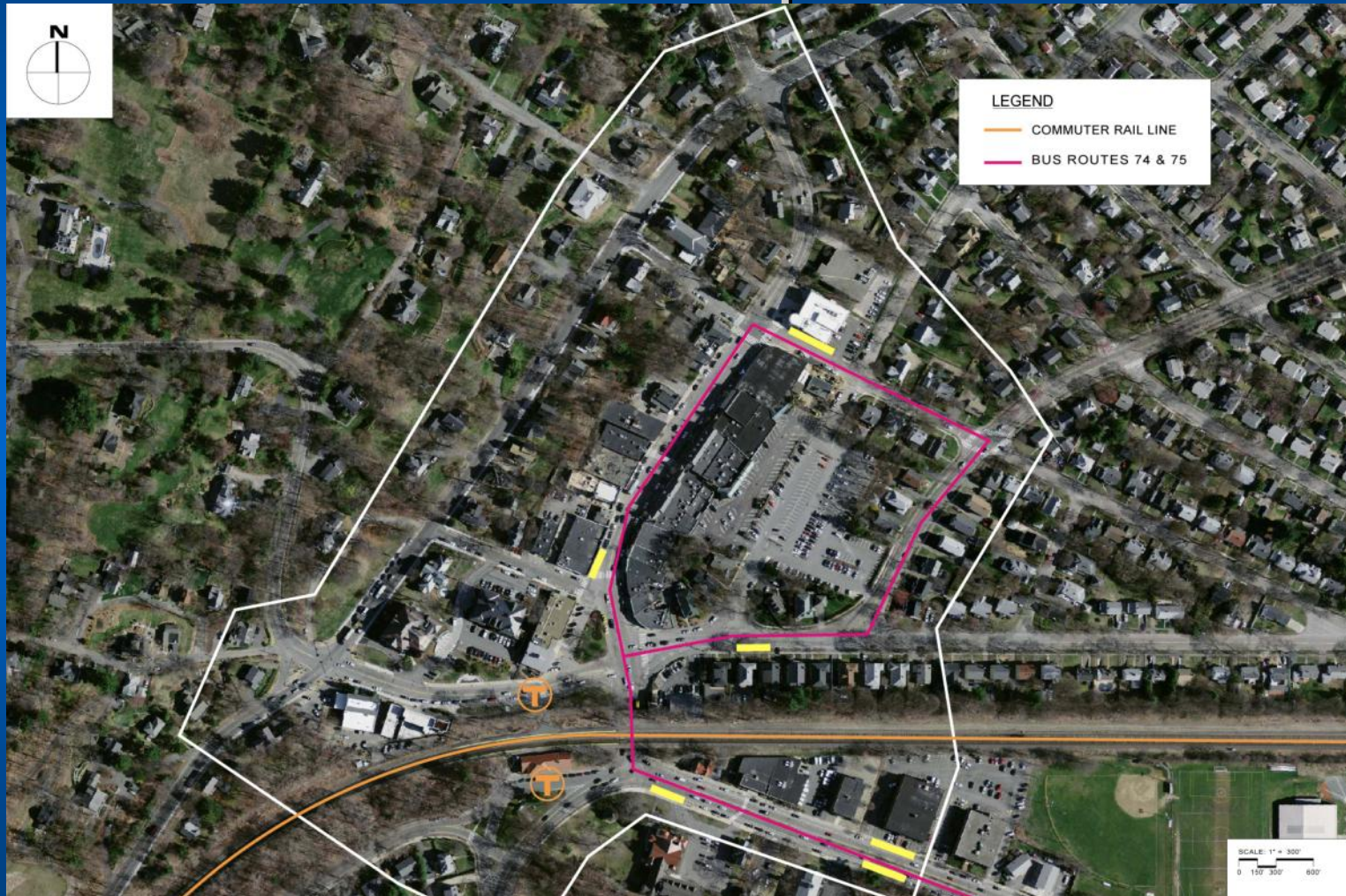


Transportation Bicycle Provisions

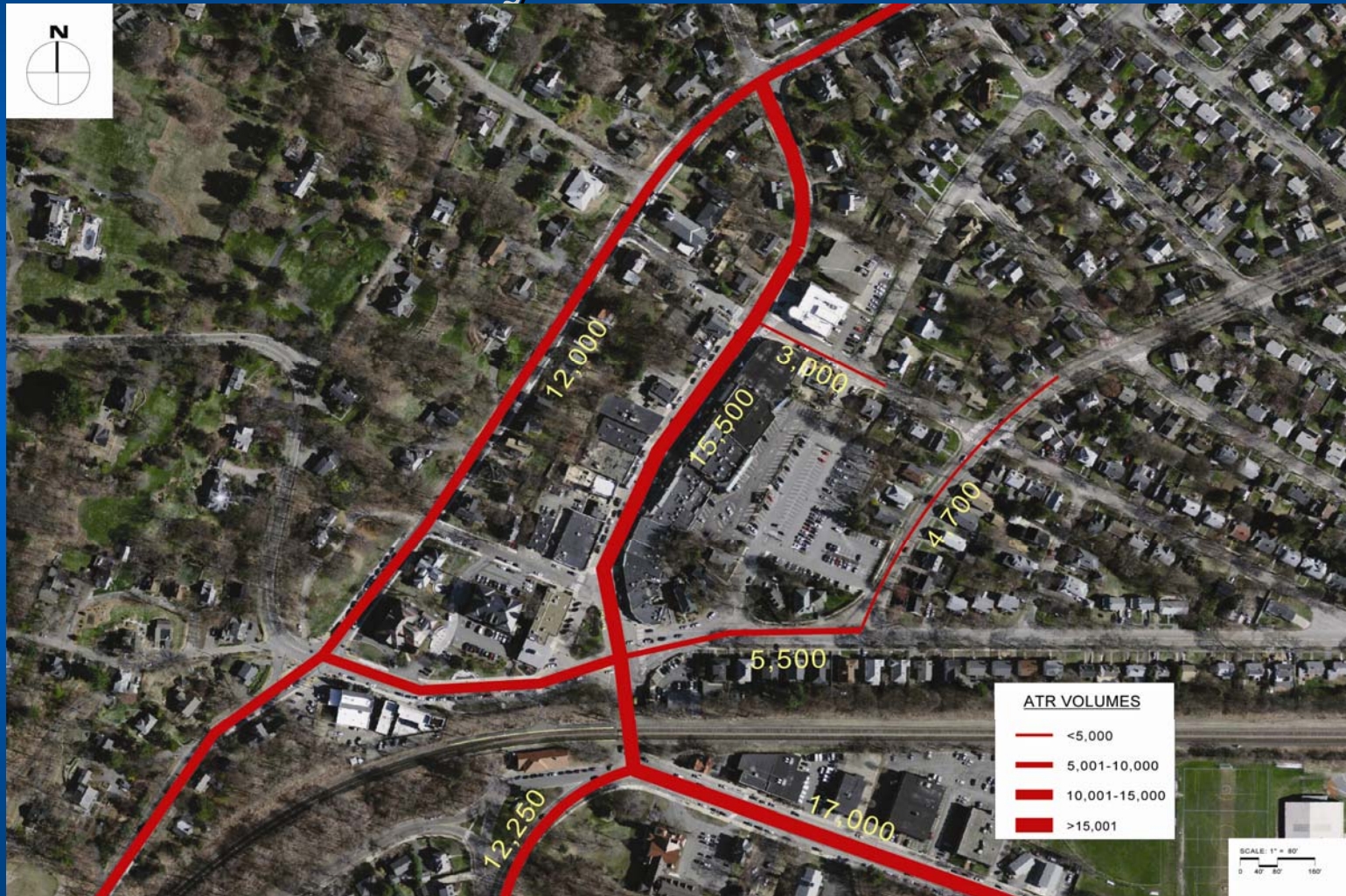


Transportation

Public Transportation

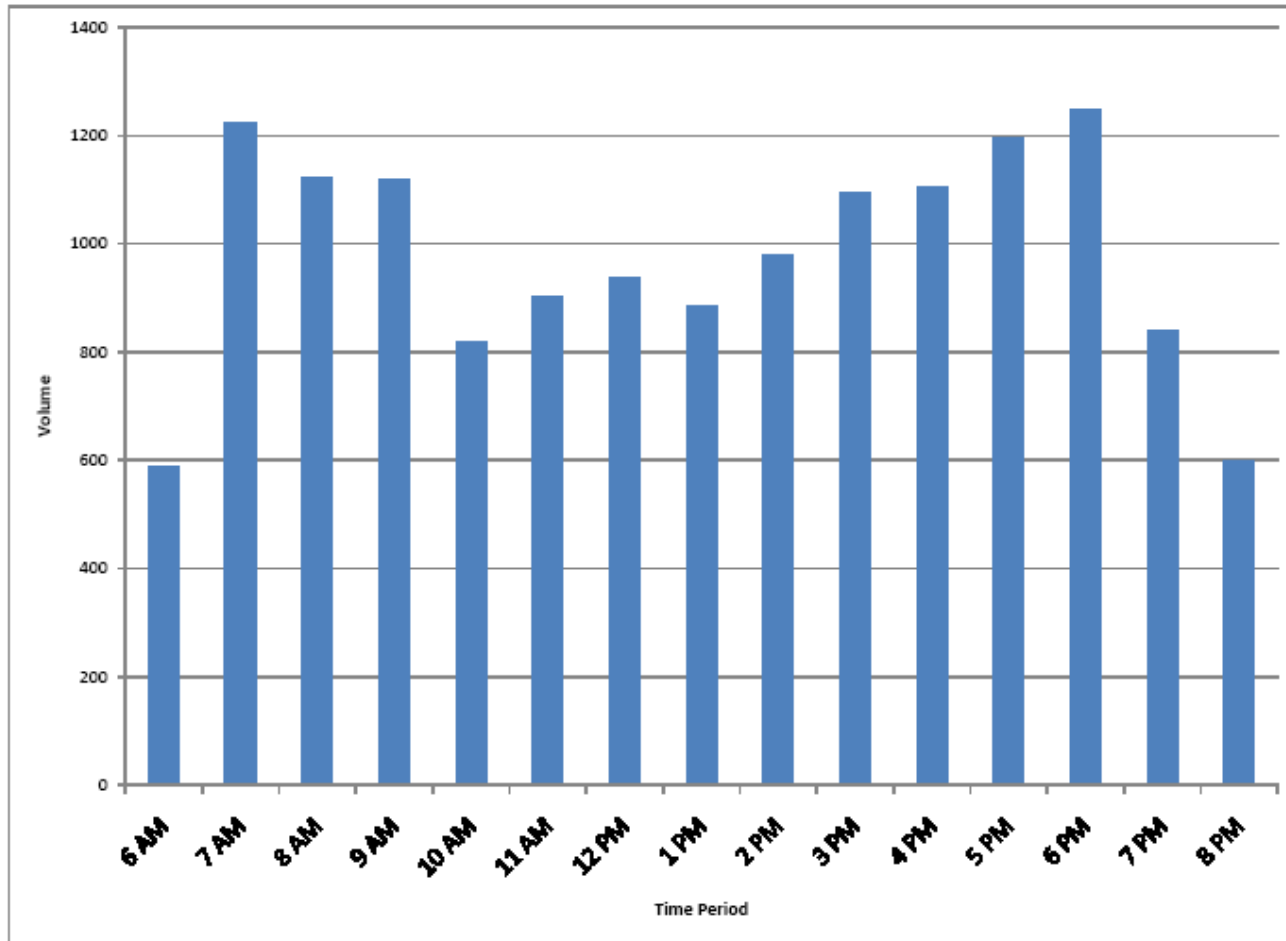


Transportation Daily Traffic Counts



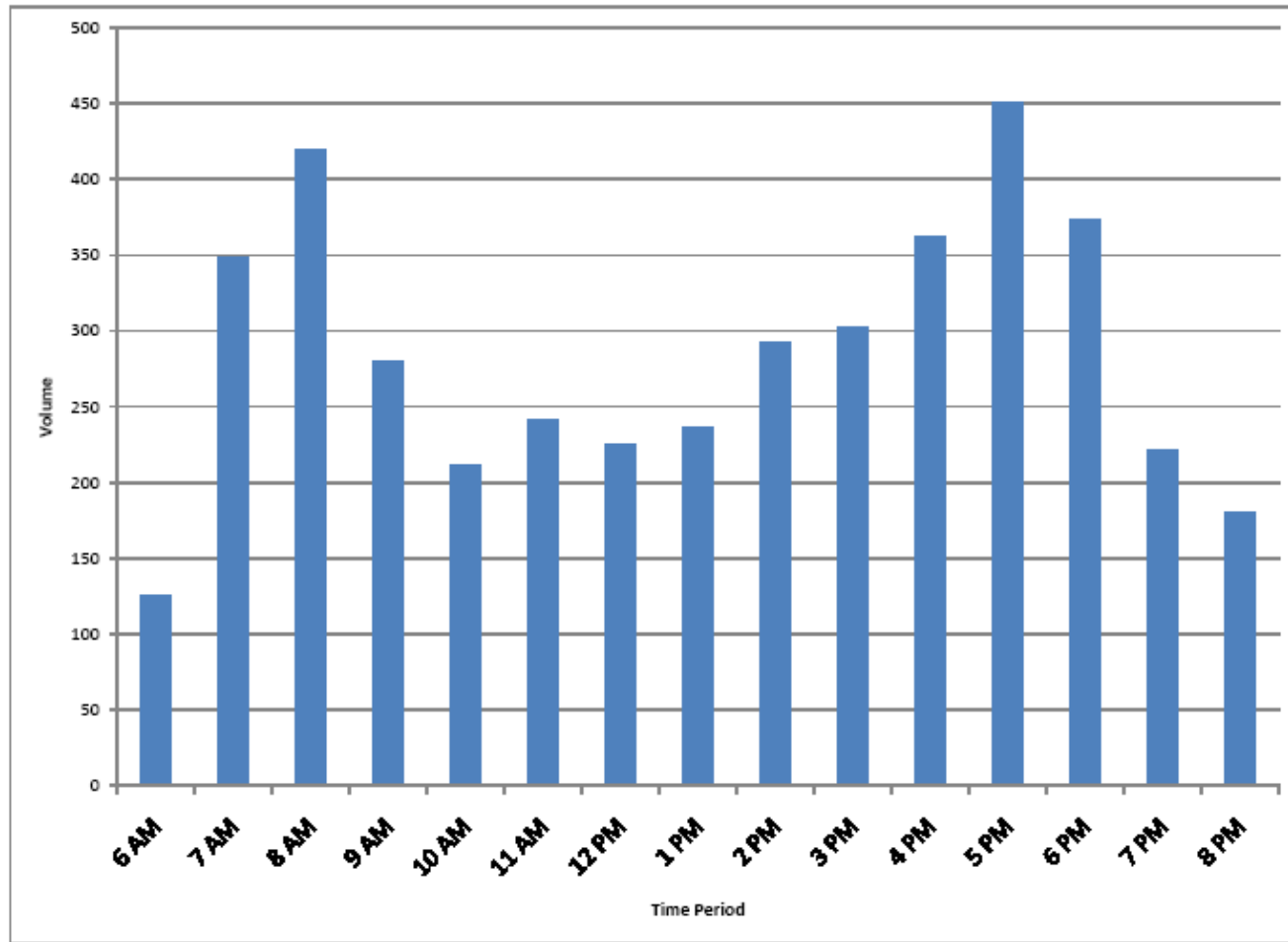
Transportation

Daily Volume Fluctuations – Leonard Street



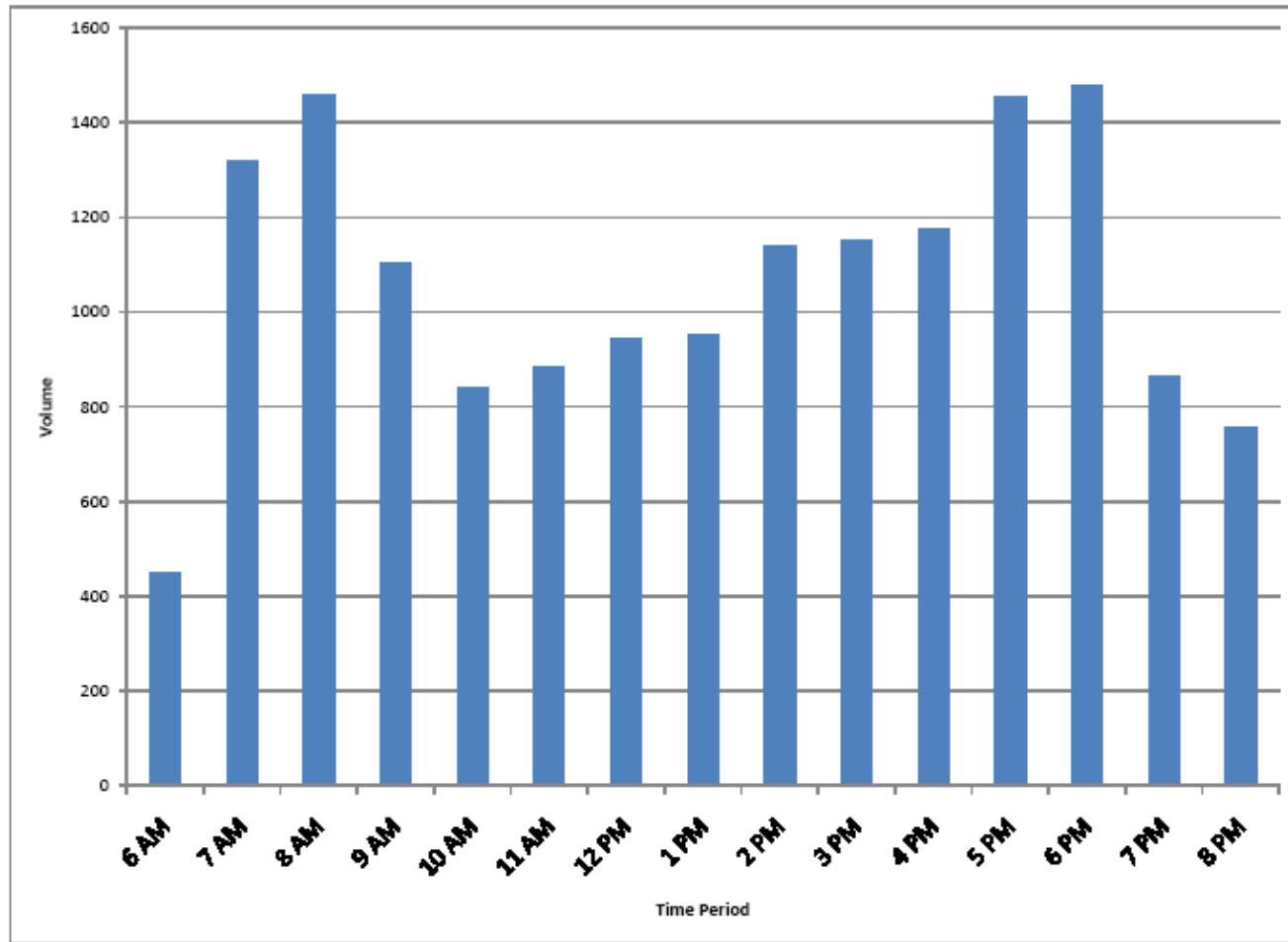
Transportation

Daily Volume Fluctuations – Cross Street



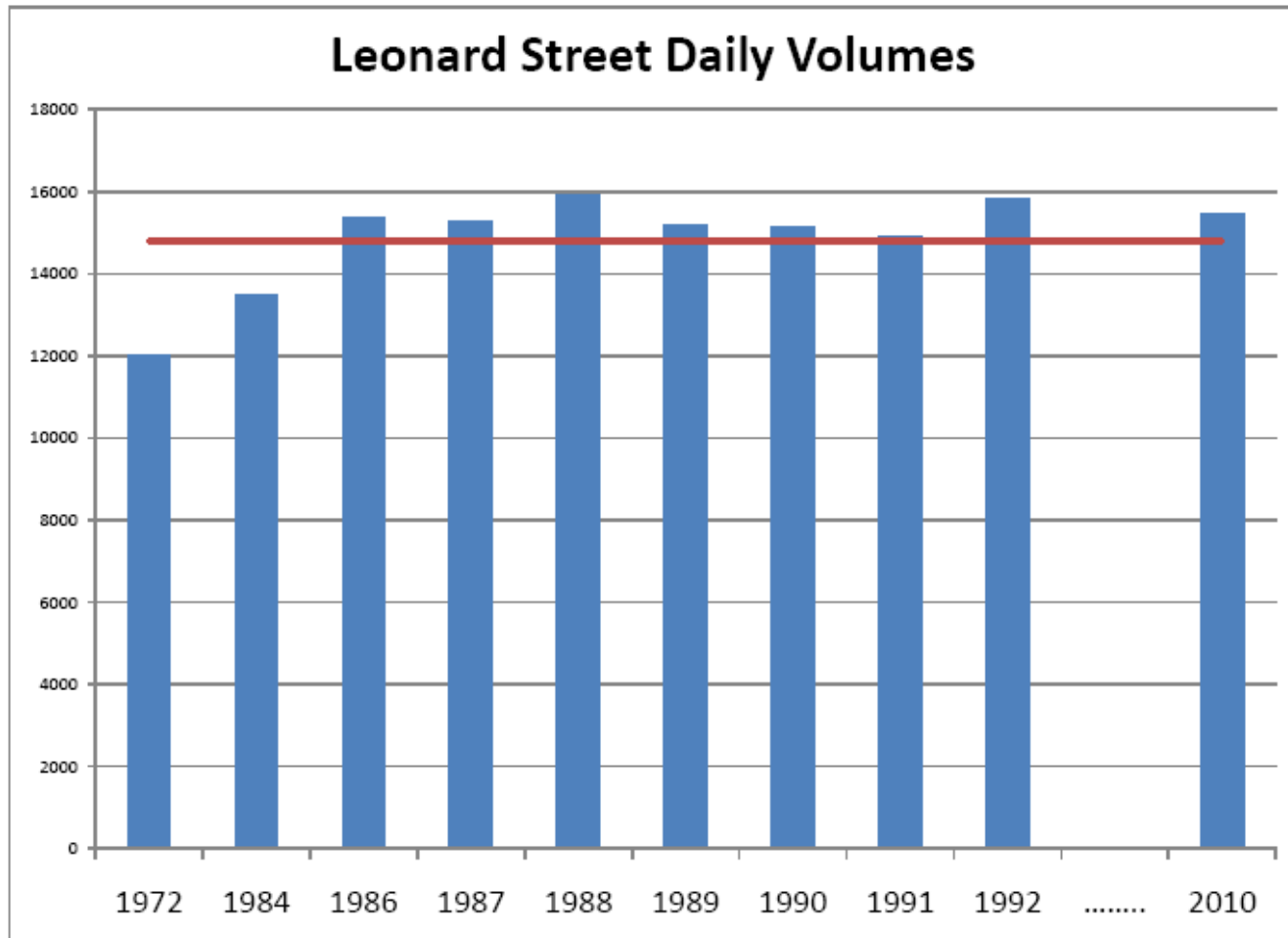
Transportation

Daily Volume Fluctuations – Concord Avenue



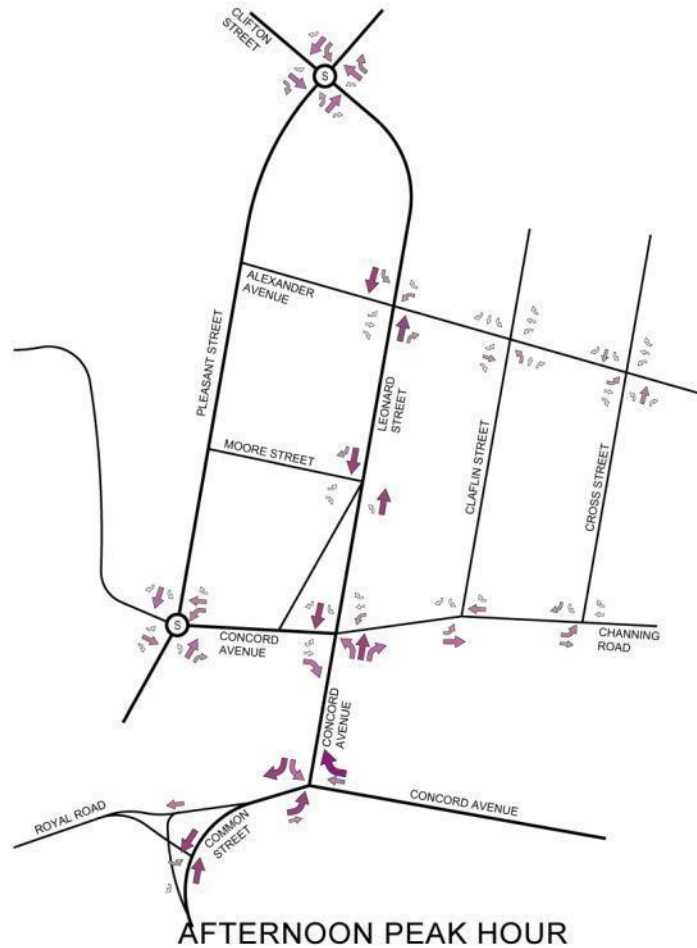
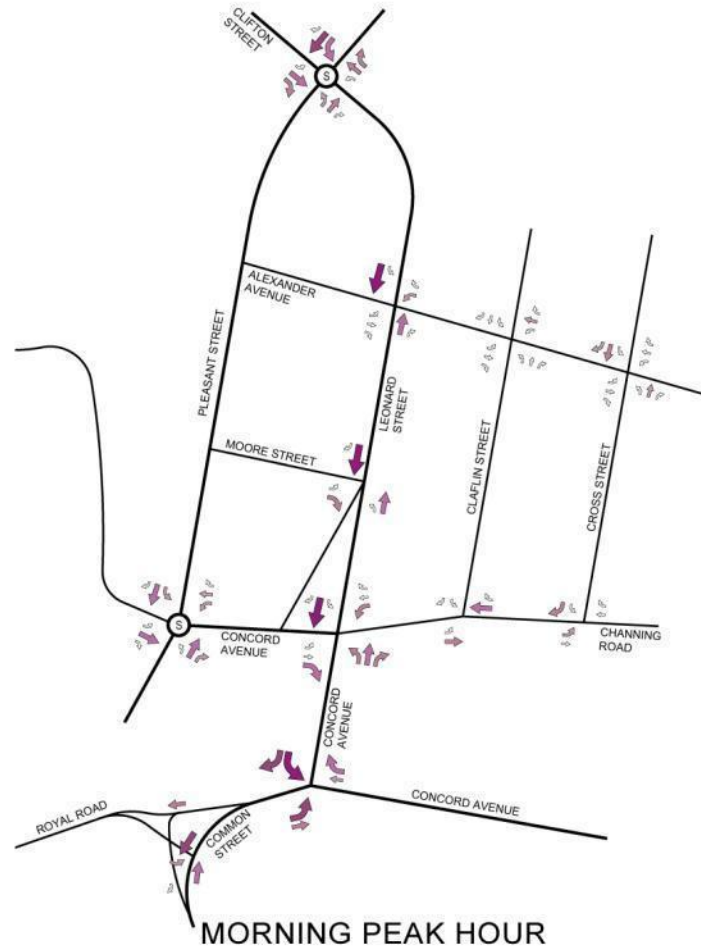
Transportation

Historical Average Daily Volumes



Transportation

2010 Turning Volumes



Transportation

Levels of Service (LOS) – Morning Peak

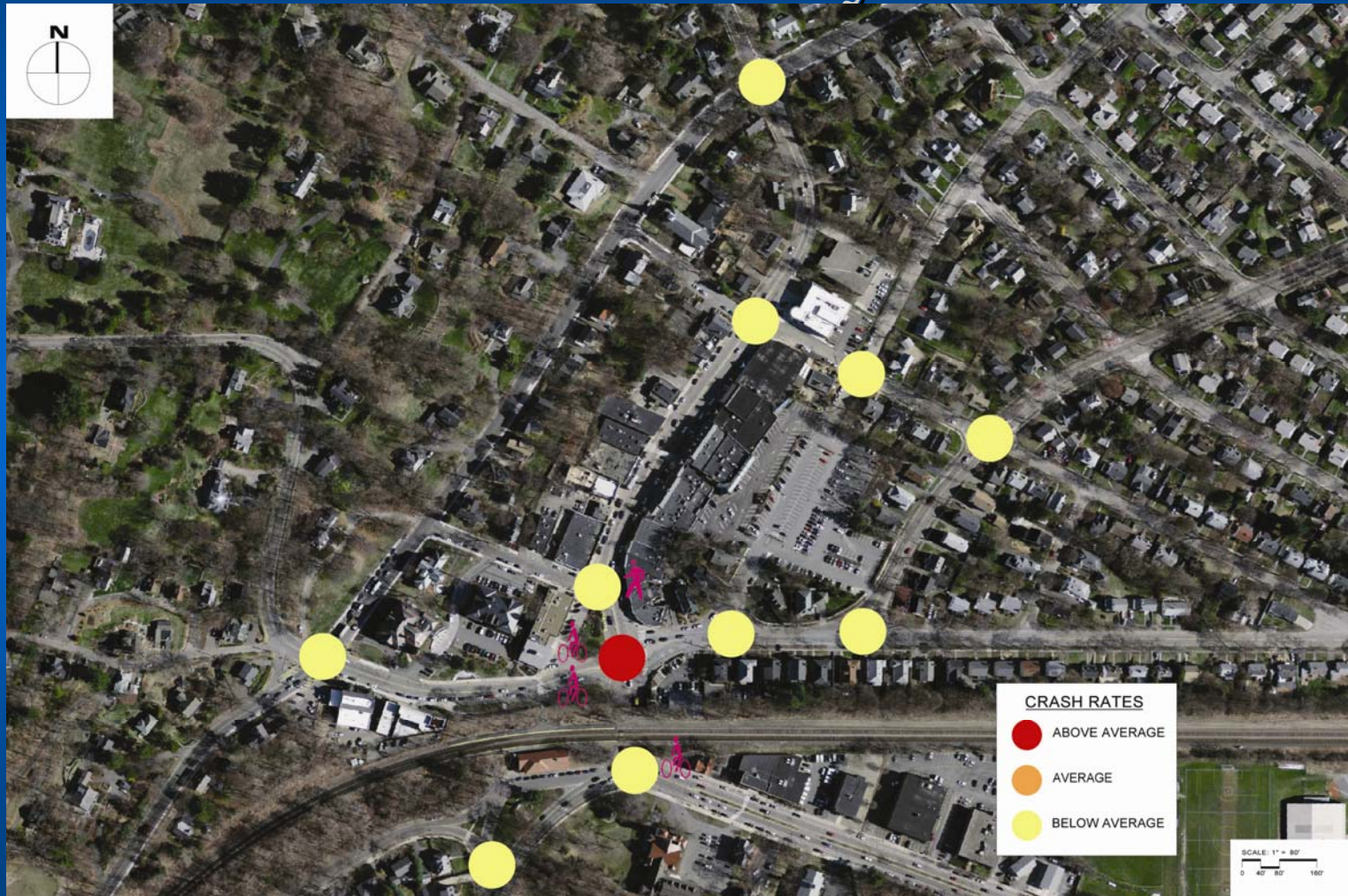


Transportation

Levels of Service (LOS) – Afternoon Peak



Transportation Crash Analysis



Transportation On-Street Parking



Transportation Off-Street Parking



Public Input

