

# CUSHING VILLAGE

BELMONT, MASSACHUSETTS



CUSHING VILLAGE  
BELMONT, MA

PLANNING BOARD PRESENTATION NO. 8 (THE WINSLOW)

REVISED 26 NOV 2012

# Cushing Village Site Plan

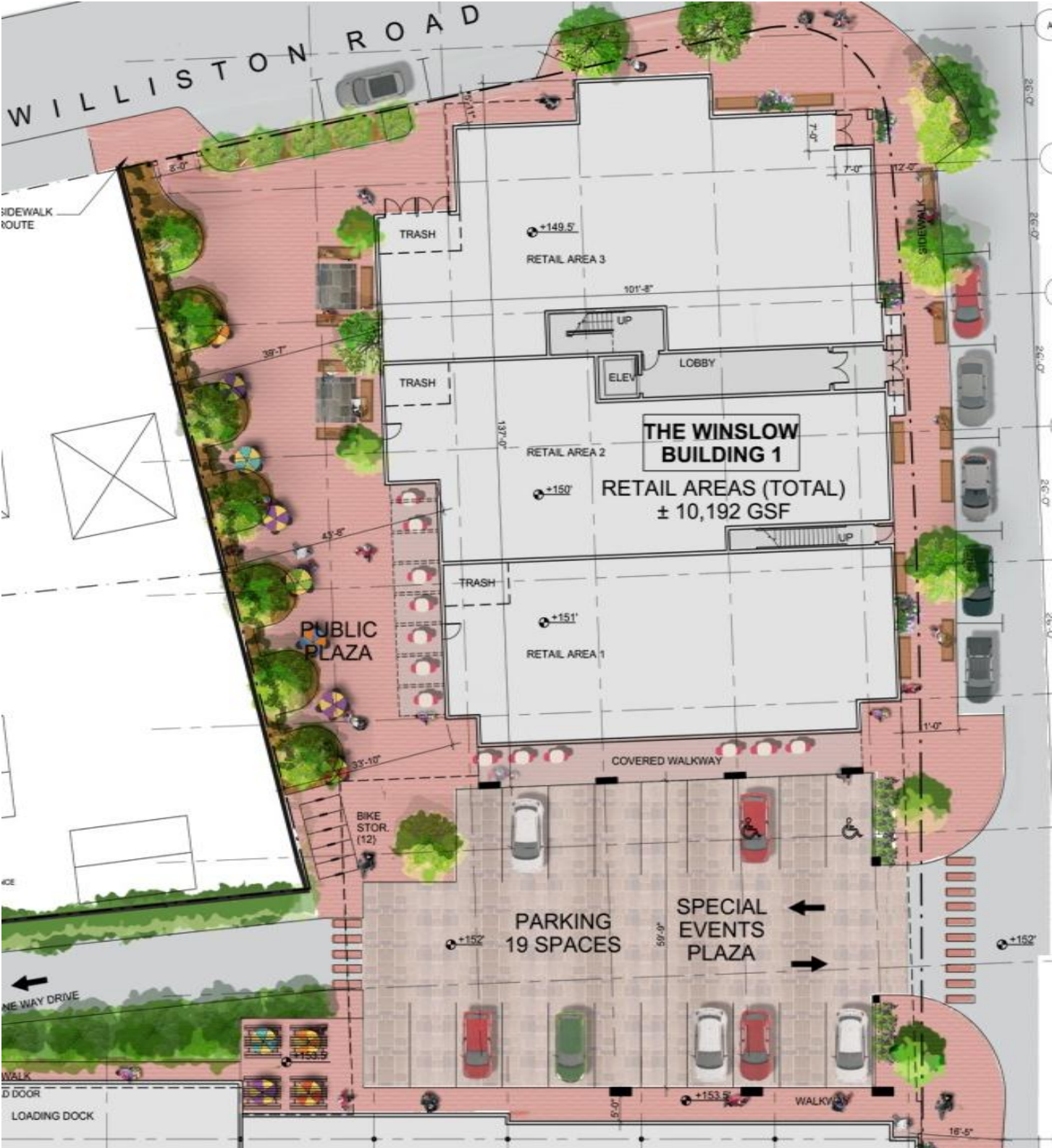


CUSHING VILLAGE  
BELMONT, MA

# Cushing Village Site Plan – Winslow Area

## The Winslow Summary

- Approximately 10,000-SF commercial space
- 3 to 5 commercial spaces
- Approximately 22,500-SF residential space
- Estimated 20-22 units, mostly 2-bedrooms





## New Public Plaza

- Ramp relocated
- Public plaza created
- Building footprint reduced
- Trash Enclosure relocated
- Space for gathering, dining, play etc.
- Covered area for tables



CUSHING VILLAGE  
BELMONT, MA

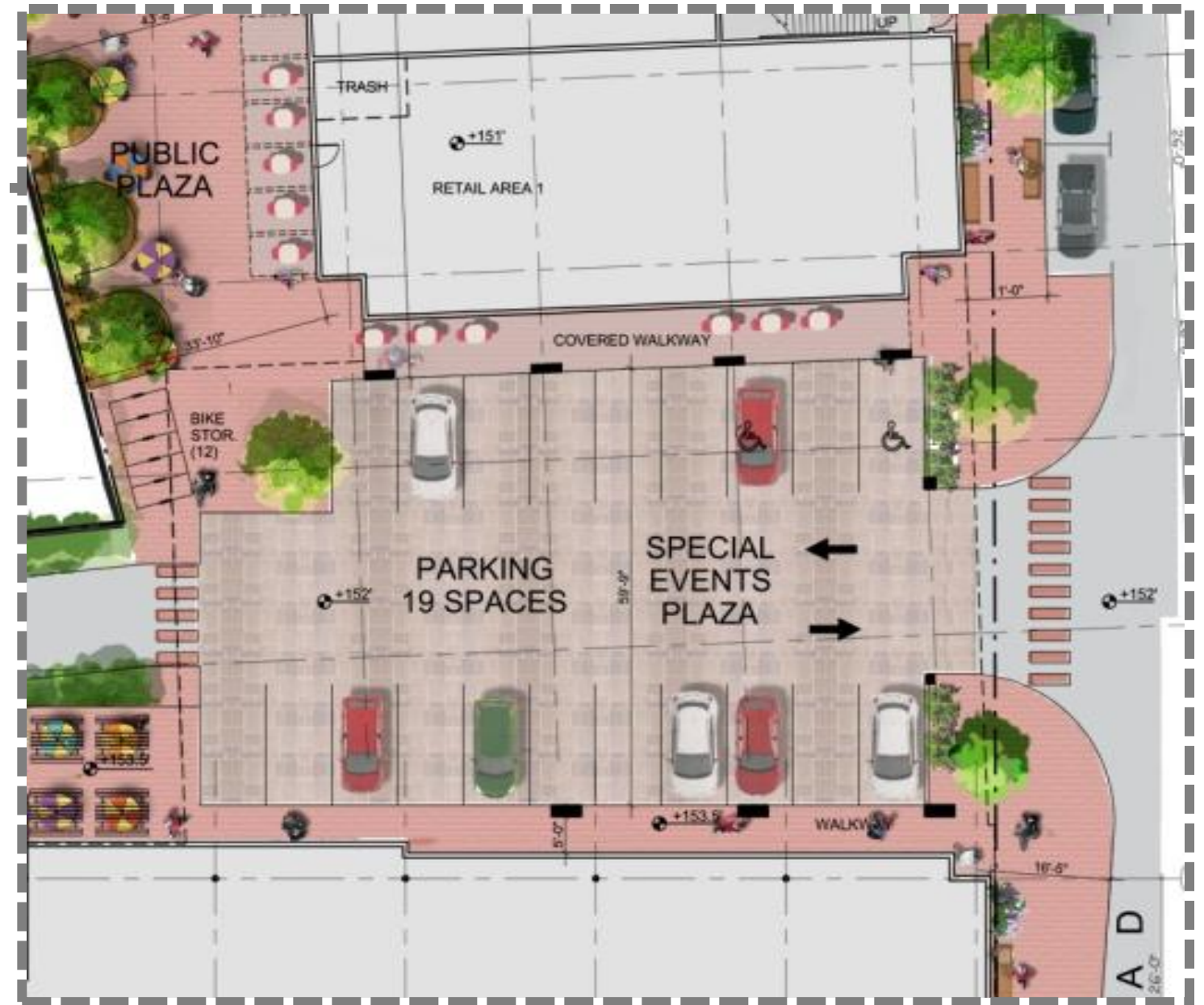
Site plan @ the Winslow





## Special Events Plaza Reduced Parking Area

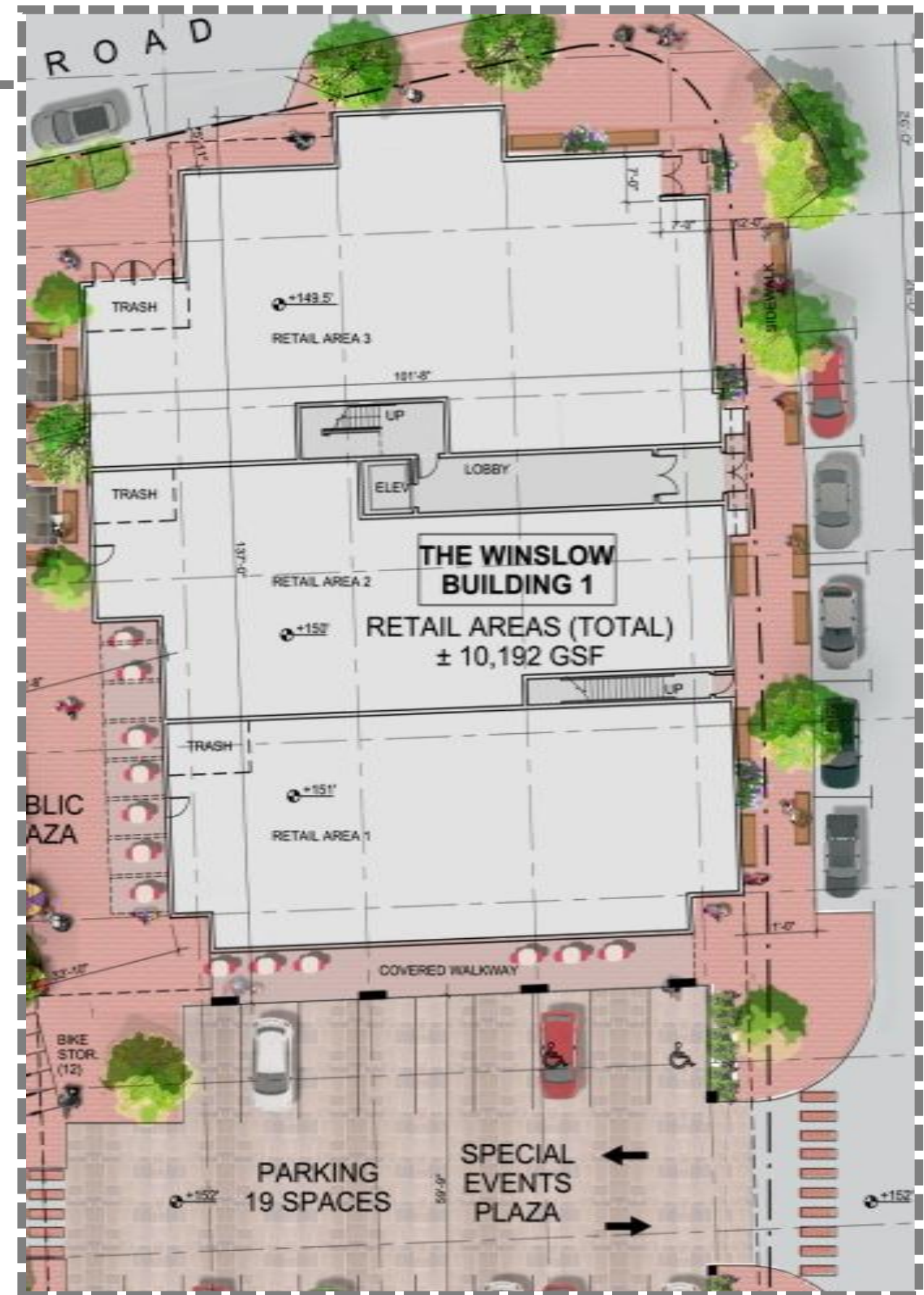
- Building Projections greatly cut back
- Increased distance between buildings
- Special events plaza created using paving pattern
- Clear pedestrian paths
- One way driveway w/landscaped pedestrian walk
- Reduced on-grade parking
- Trapelo crossing alignment





## Increased Sidewalk Width At front of Winslow

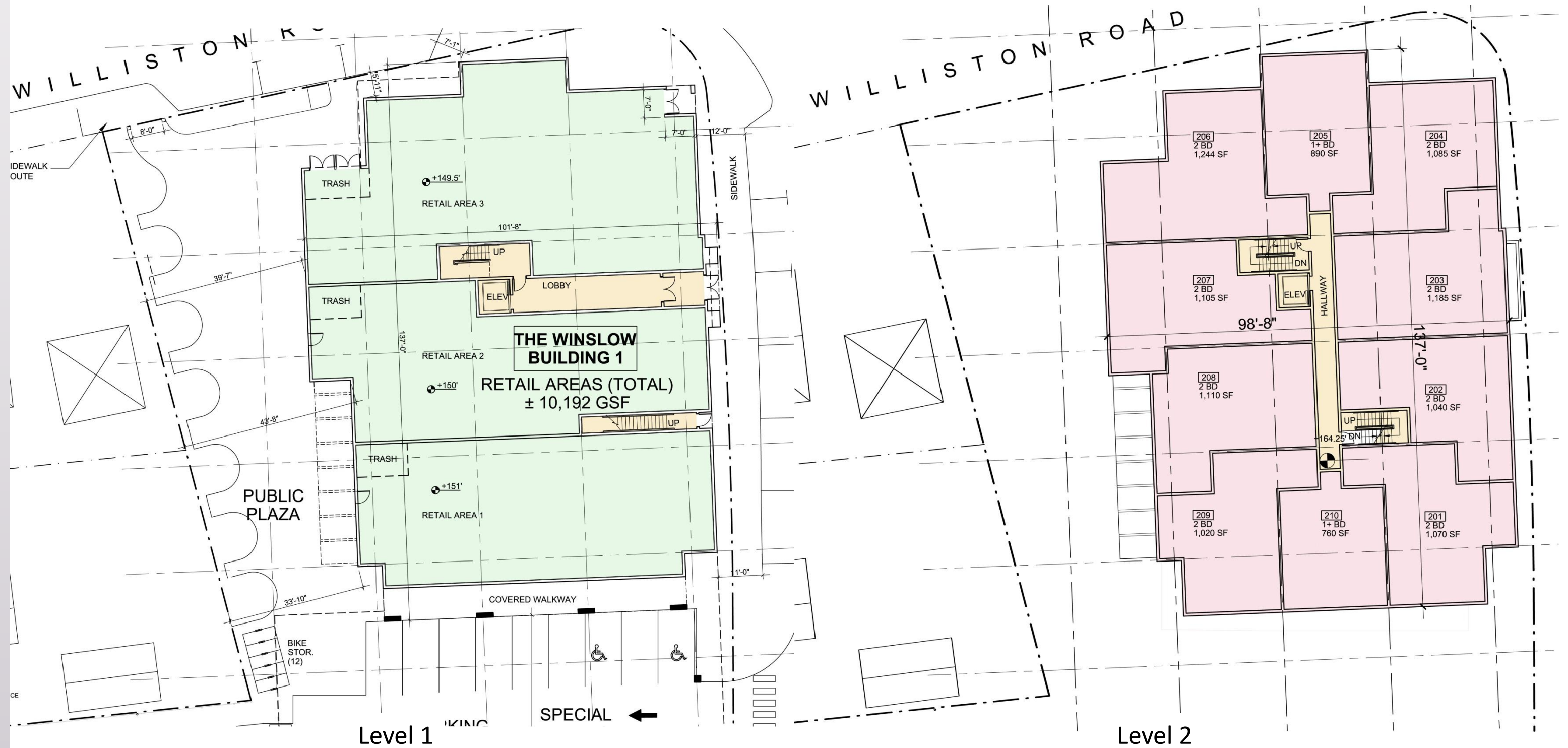
- 4' to 6' of increased width by setting back the Winslow
- Allows for more benches and other amenities



CUSHING VILLAGE  
BELMONT, MA

Site plan @ the Winslow

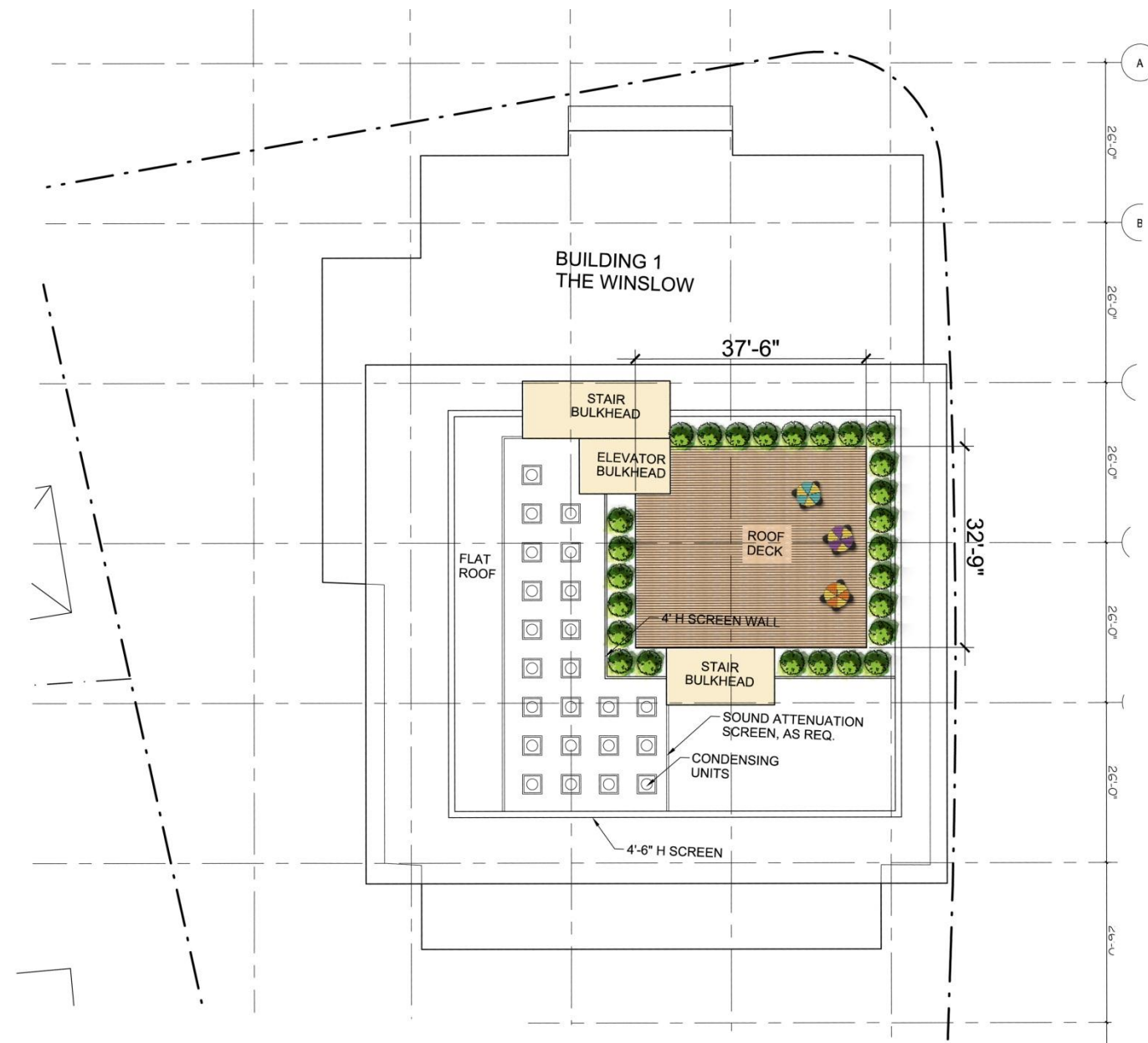
# Floor Plans



Floor Plans



Level 3



Roof Plan

# Elevation

TRAPELO ROAD



CUSHING VILLAGE  
BELMONT, MA

Elevation @ the Winslow  
10

# The Winslow

## Building Detail



- Traditional double hung windows with transoms.
- Strong cornice over central part of building.
- Dramatic overhang to give the building a formal presence.
- Elegant curved brackets.
- Shingle-style detailing.
- Juliette balconies add visual variety to façade.



- Detailing that evokes craftsmanship and beautiful textures.
- Autumn color theme.
- Typical materials – ironspot brick, multicolor siding and trim, colorful awnings, granite base.



- Arts and Crafts front entry.
- Reminiscent of a front porch typical of a house in Belmont.

CUSHING VILLAGE

BELMONT, MA

Detail @ the Winslow

# Street Elevation

TRAPELO ROAD



CUSHING VILLAGE  
BELMONT, MA

Elevation @ the Winslow  
12

# The Winslow

WILLISTON ROAD ELEVATION

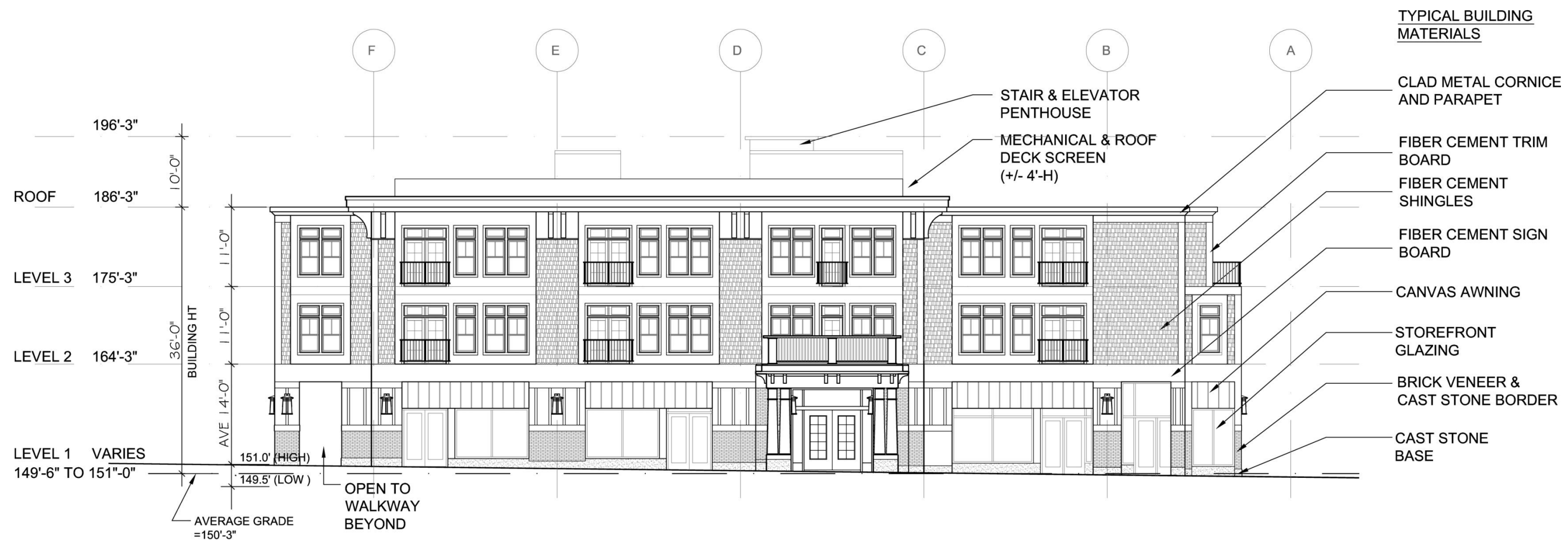


CUSHING VILLAGE  
BELMONT, MA

Elevation @ the Winslow  
13

# The Winslow

Front Elevations Trapello Road (Typical Material)



**1 TRAPELO ROAD ELEVATION**  
SCALE 1/16"=1'-0"

# The Winslow

## Side and Rear Elevations



3 REAR ELEVATION  
SCALE 1/16"=1'-0"



4 SIDE ELEVATION (DRIVEWAY)  
SCALE 1/16"=1'-0"

# The Winslow

View from Trapelo Looking Southeast



CUSHING VILLAGE  
BELMONT, MA

Perspective @ the Winslow

# The Winslow

Birds Eye View across Trapelo Rd



CUSHING VILLAGE  
BELMONT, MA

Perspective @ the Winslow

# The Winslow

View from Williston Rd at Horne Rd



CUSHING VILLAGE  
BELMONT, MA

Perspective @ the Winslow

# The Winslow

View from Trapelo Road Looking West



CUSHING VILLAGE  
BELMONT, MA

Perspective @ the Winslow

# The Winslow

View of Public Plaza



CUSHING VILLAGE  
BELMONT, MA

Perspective @ the Winslow