



WINSLOW REVISIONS, SHADOW STUDIES, CLARIFICATIONS



CUSHING VILLAGE
BELMONT, MA

PLANNING BOARD PRESENTATION NO. 11

REVISED 14 DEC 2012

Elevation

TRAPELO ROAD



CUSHING VILLAGE
BELMONT, MA

Elevation @ the Winslow
2

The Winslow

WILLISTON ROAD ELEVATION



The Winslow

View from Trapelo Looking Southeast



CUSHING VILLAGE
BELMONT, MA

Perspective @ the Winslow

The Winslow

View from Williston Rd at Horne Rd



CUSHING VILLAGE
BELMONT, MA

Perspective @ the Winslow

The Winslow

View from Trapelo Road Looking West



CUSHING VILLAGE
BELMONT, MA

Perspective @ the Winslow

The Winslow

View of Public Plaza



CUSHING VILLAGE
BELMONT, MA

Perspective @ the Winslow

The Winslow

Birds Eye View across Trapelo Rd



CUSHING VILLAGE
BELMONT, MA

Perspective @ the Winslow

Street Elevation

TRAPELO ROAD

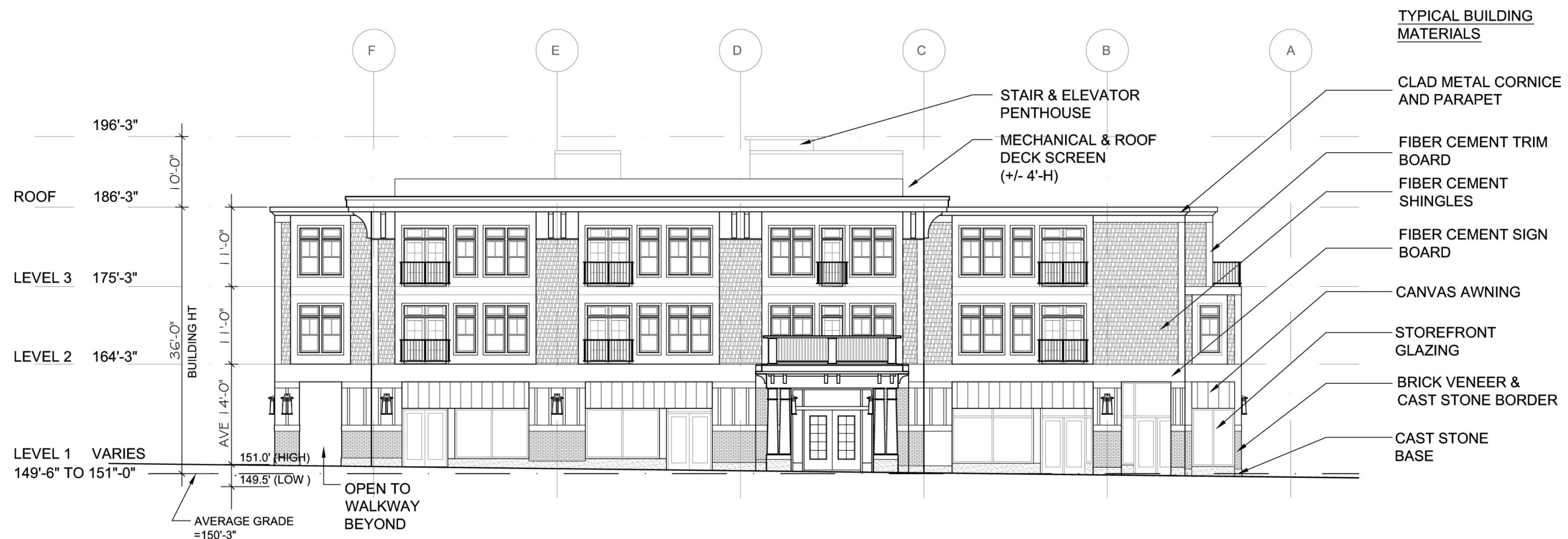


CUSHING VILLAGE
BELMONT, MA

Elevation @ the Winslow

The Winslow

Front Elevations Trapello Road (Typical Material)



1 TRAPELO ROAD ELEVATION
SCALE 1/16"=1'-0"

The Winslow

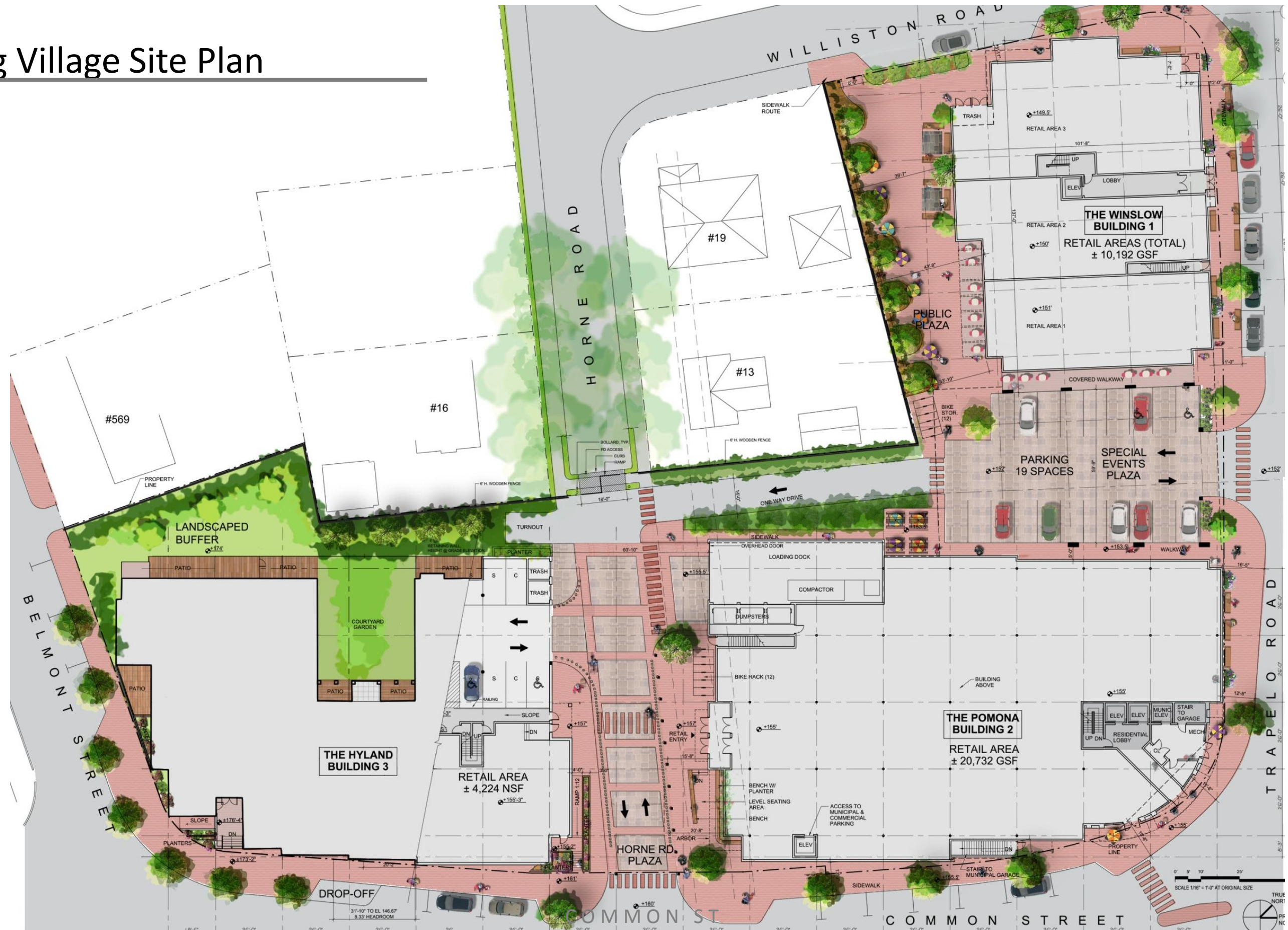
Side and Rear Elevations



3 REAR ELEVATION
SCALE 1/16"=1'-0"



4 SIDE ELEVATION (DRIVEWAY)
SCALE 1/16"=1'-0"



Elevation – POMONA

Horne Rd



CUSHING VILLAGE
BELMONT, MA

POMONA – Horne Road Elevation at the Pomona

Setbacks - POMONA

Horne Rd

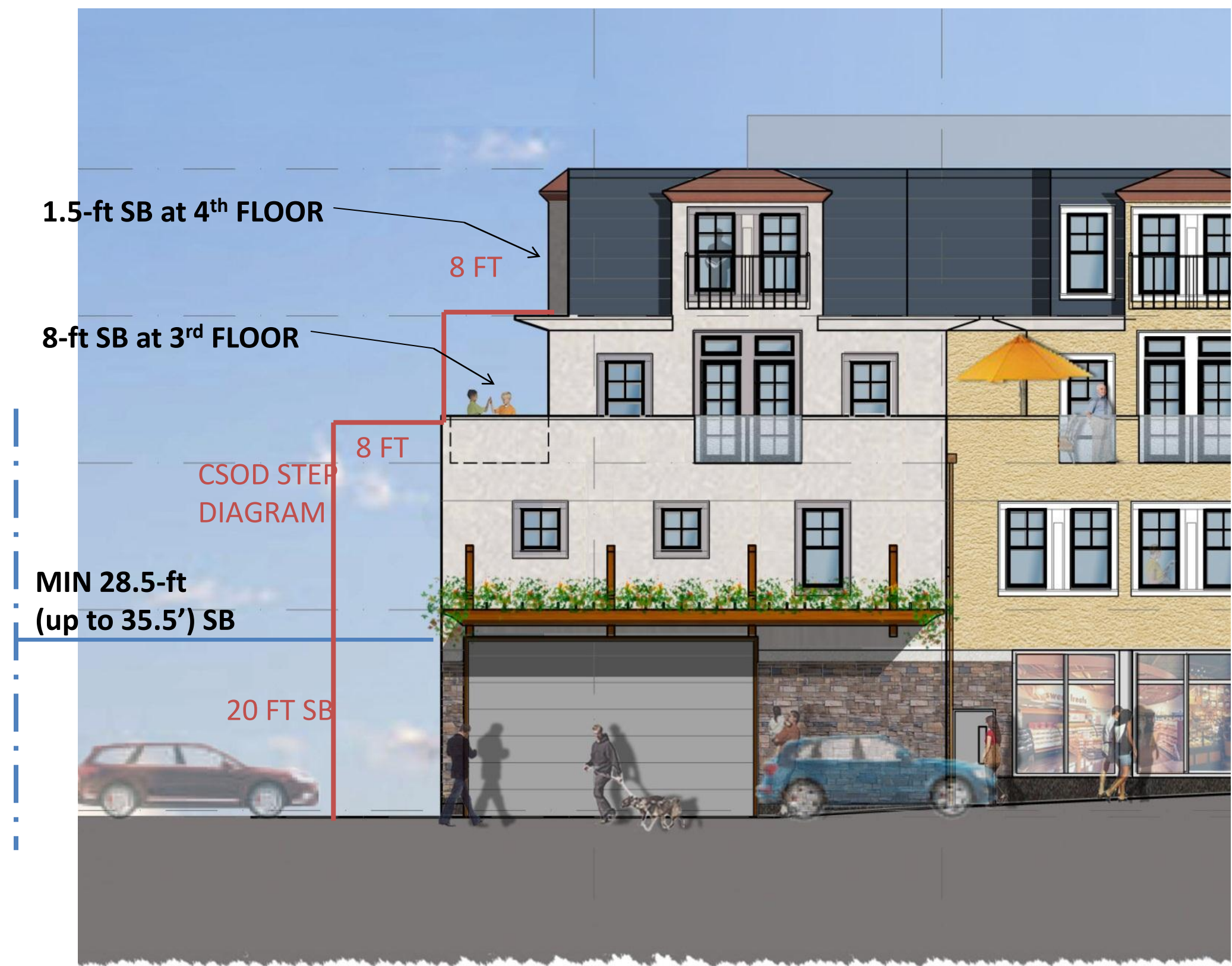


CUSHING VILLAGE
BELMONT, MA

POMONA – The 3rd and 4th Floor Setbacks

Setbacks - POMONA

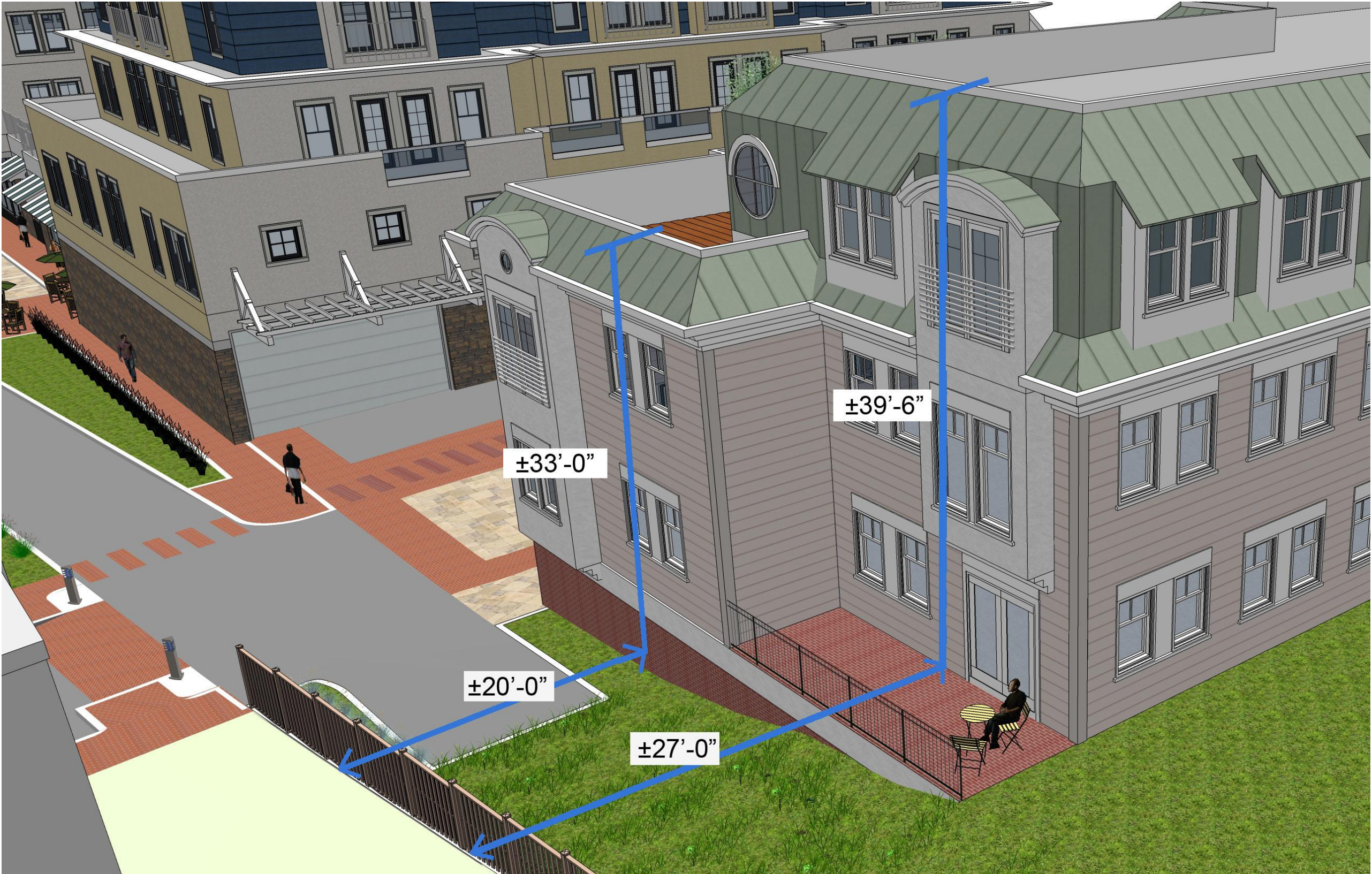
Horne Rd



CUSHING VILLAGE
BELMONT, MA

Horne Road Elevation at the Pomona STEPBACKS

Setbacks - HYLAND



CUSHING VILLAGE
BELMONT, MA

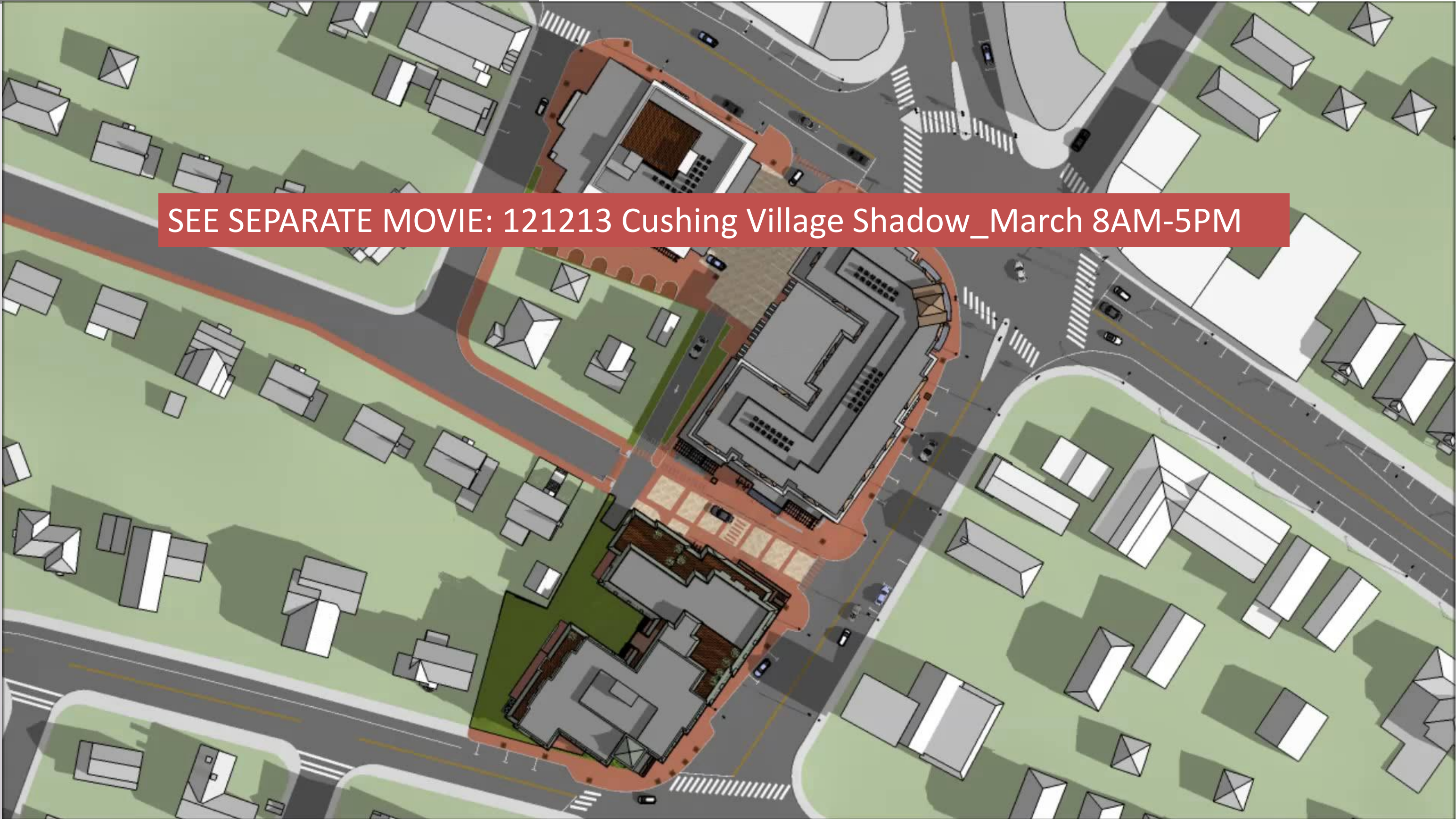
HYLAND – Lower Wing Setbacks
16

Setbacks - HYLAND



CUSHING VILLAGE
BELMONT, MA

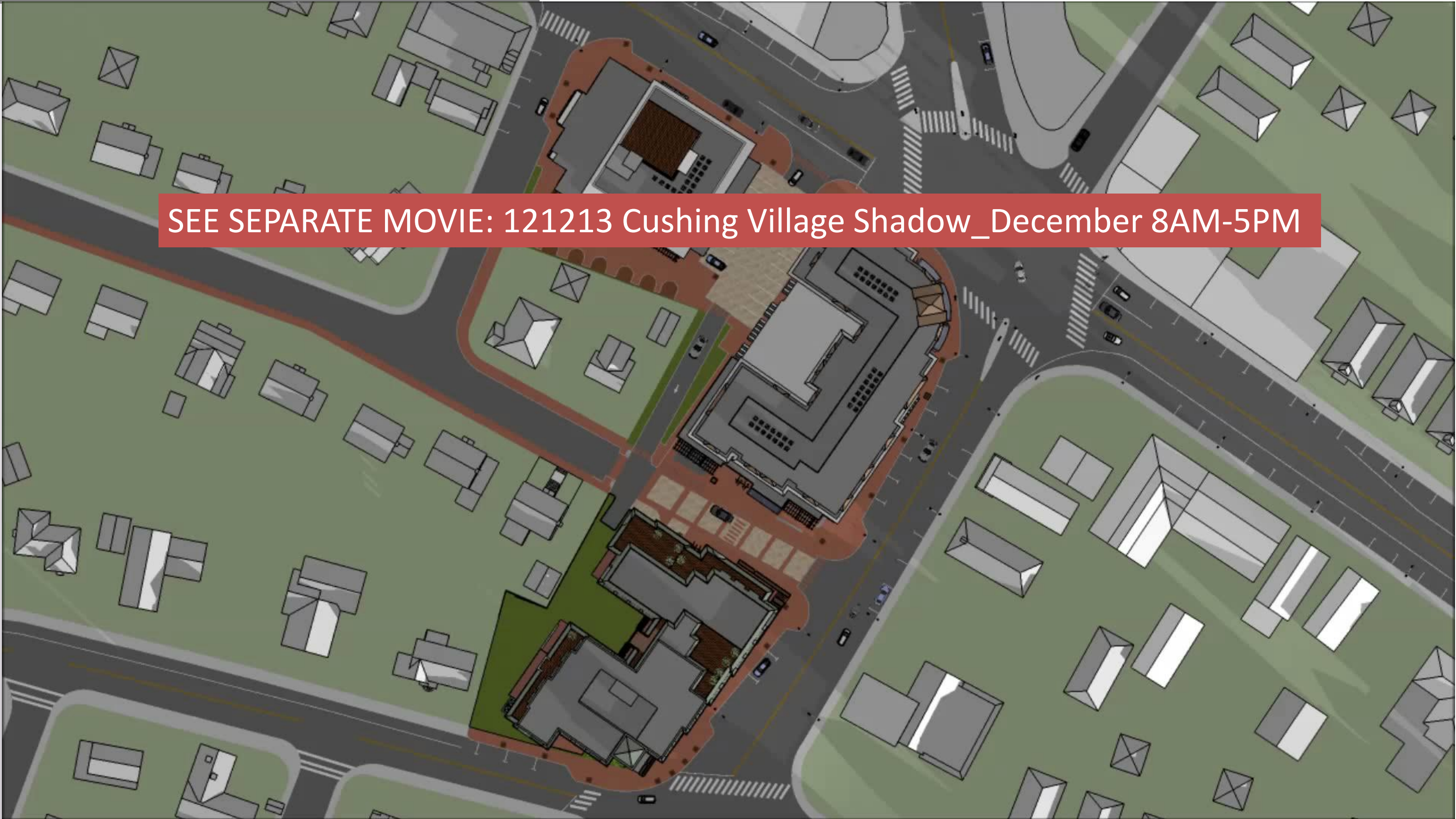
HYLAND – Upper Wing SETBACKS



SEE SEPARATE MOVIE: 121213 Cushing Village Shadow_March 8AM-5PM



SEE SEPARATE MOVIE: 121213 Cushing Village Shadow_December 8AM-5PM



Shadow Study DETAIL – DEC 21

Existing
9:00 AM



Proposed
9:00 AM



Shadow Study DETAIL – DEC 21

Existing
11:00 AM



Proposed
11:00 AM



Shadow Study DETAIL – DEC 21

Existing
1:00 PM



Proposed
1:00 PM



Shadow Study DETAIL – DEC 21

Existing
3:00 PM



Proposed
3:00 PM

