

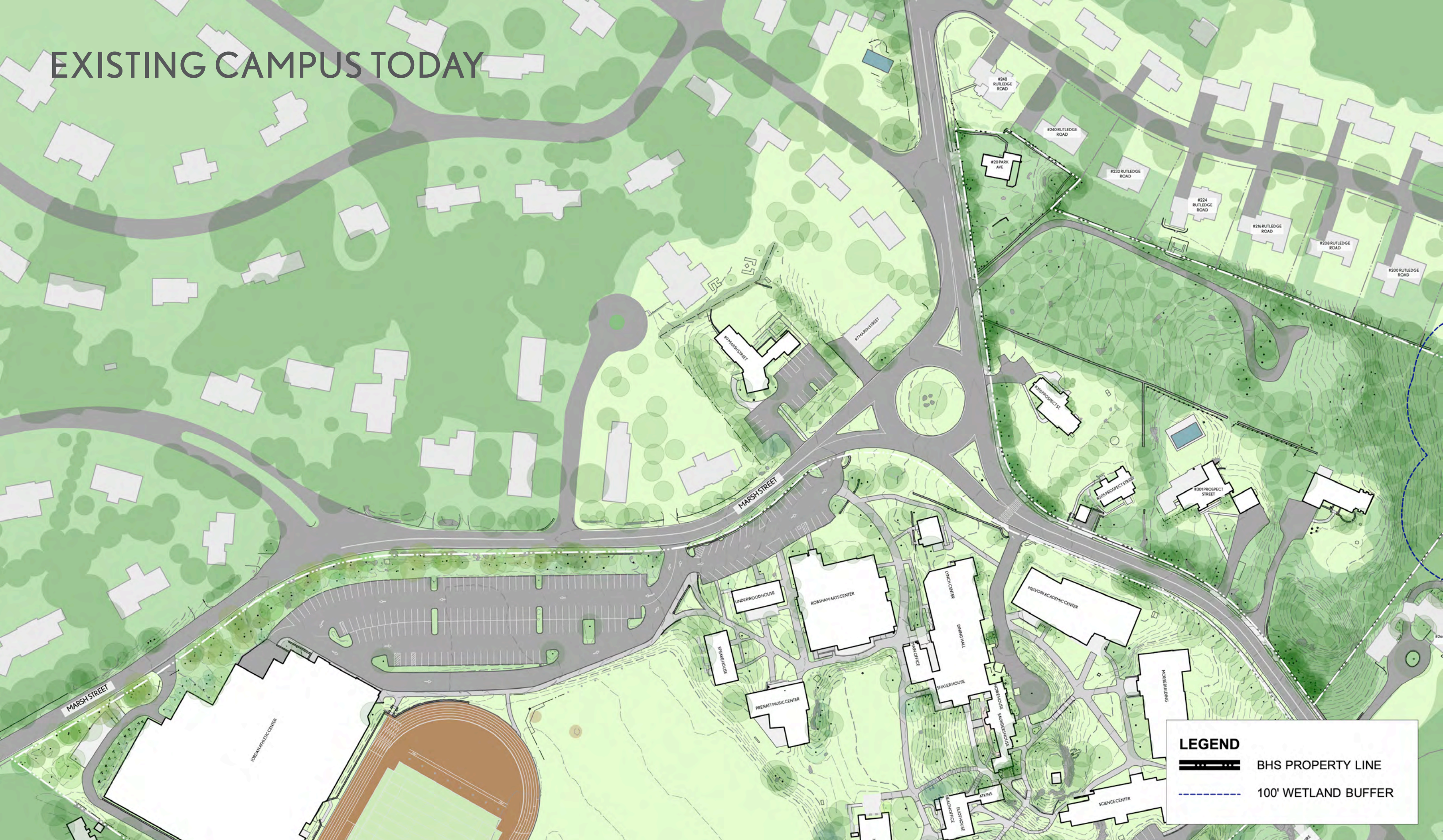
LANDSCAPE DESIGN

Belmont Hill School




PLANNING BOARD HEARING

FEBRUARY 14, 2023

EXISTING CAMPUS TODAY



[illegible]

 BHS PROPERTY LINE
 LIMIT OF WORK
 100' WETLAND BUFFER

100' WETLAND BUFFER

ZAMBONI LOT-

1

UPPER LOT



UPPER LOT - EXISTING



LEGEND

 BHS PROPERTY LINE

UPPER LOT - PROPOSED



UPPER LOT

PLANTING

- PLANT 250' ALONG MARSH ST & 120' ALONG PROSPECT ST
- RETAIN EXISTING HEALTHY TREES
- PLANT 6 TREES – 3-4" DBH (WHITE OAK, SWAMP WHITE OAK, AMERICAN ELM)
- PLANT 123 SHRUBS – 18-36" (LONGSTOCK HOLLY, INKBERRY, JAPANESE YEW AND VIBURNUM)
- UNDERSTORY OF NO MOW GROUNDCOVER



AMERICAN ELM
ULMUS AMERICANA



WHITE OAK
QUERCUS ALBA



SWAMP WHITE OAK
QUERCUS BICOLOR



INKBERRY
ILEX GLABRA



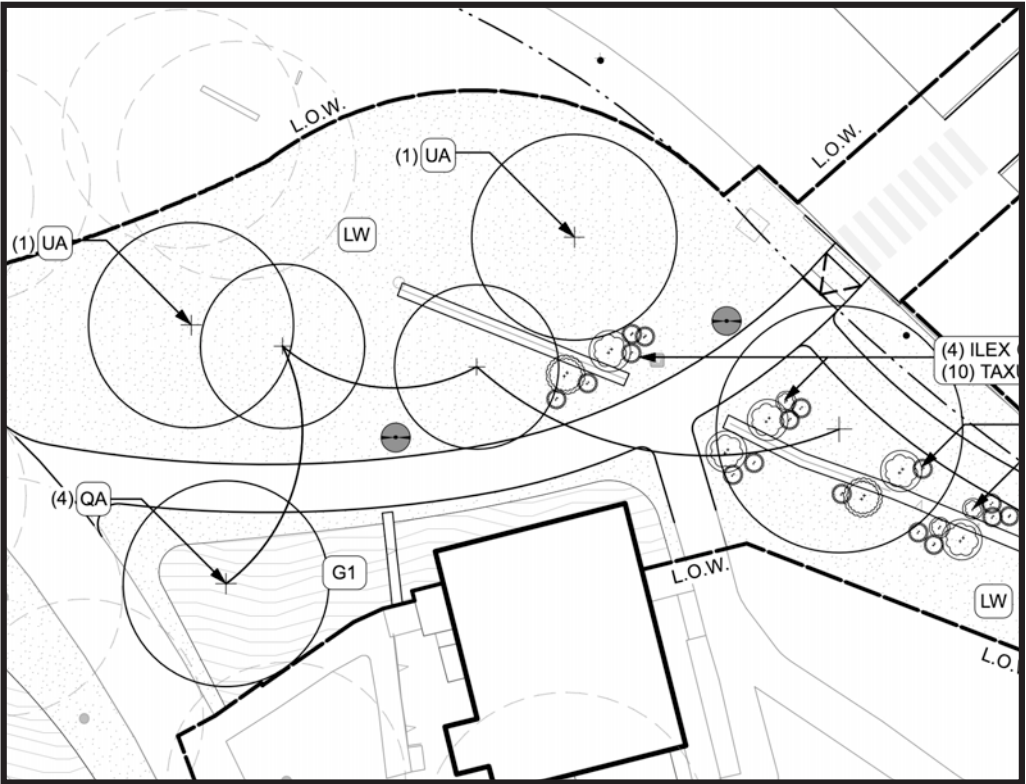
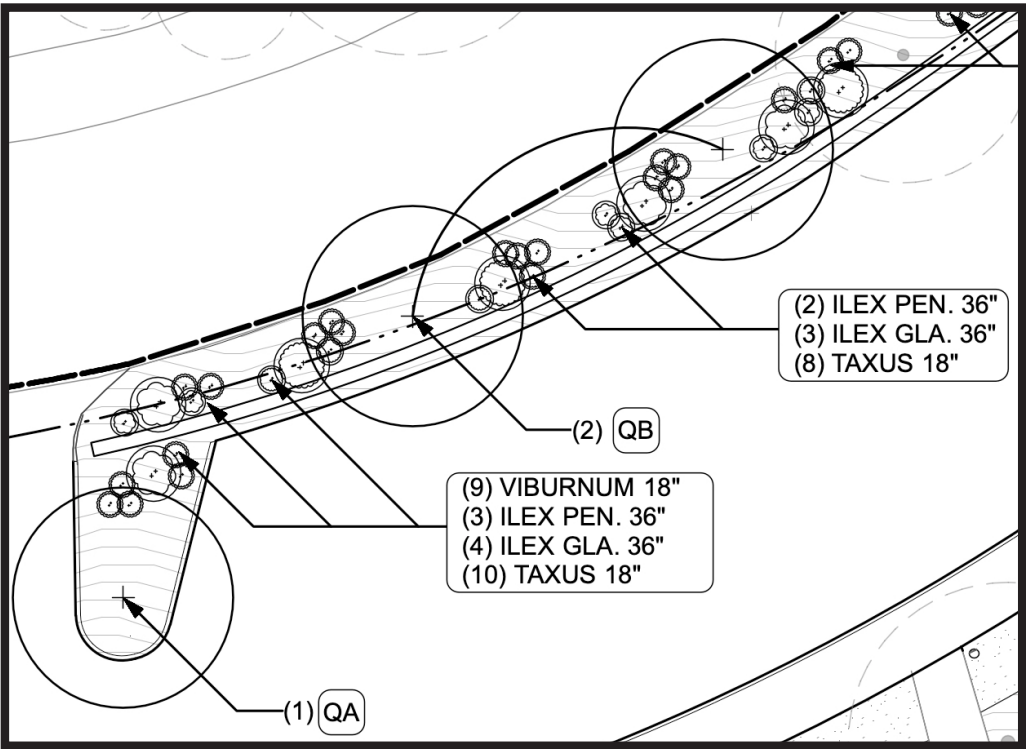
SPREADING YEW
TAXUS CUSPIDATA



DAVID VIBURNUM
VIBURNUM DAVIDII



LONGSTOCK HOLLY
ILEX PENDUNCULOSA



ZAMBONI LOT



ZAMBONI LOT - EXISTING



ZAMBONI LOT - PROPOSED

PROPOSED CURB CUT AND GATE, FOR ATHLETIC USE

PROPOSED LIGHTING

MAINTAIN EXISTING CURB CUT; KEEP GATE

PROPOSED FENCE AND SCREENING PLANTING

MARSH STREET

JORDAN ATHLETIC CENTER

PROPOSED SCREENING PLANTING

- CONVERT 12 GRAVEL PARKING SPACES TO 26 SPACE PAVED LOT CONNECTED TO MAIN PARKING LOT
- RETAIN EXISTING CURB CUT FOR MAINTENANCE ONLY AT JORDAN ATHLETIC LOT; GATED
- ADD DEDICATED BUS LANE FOR USE PRIMARILY BY VISITING TEAMS; GATED. WILL IMPROVE PUBLIC SAFETY ACCESS TO JORDAN ATHLETIC CENTER

ZAMBONI LOT-SECTIONS



ZAMBONI LOT

PLANTING

- PLANT 450 FEET ALONG MARSH STREET (BOTH SIDES OF FENCE) AND 150' ALONG WEST PROPERTY BOUNDARY
- PLANT 16 TREES – 3-4" DBH (GRAY BIRCH, WHITE PINE, SWAMP WHITE OAK, EASTERN REDBUD AND WASHINGTON HAWTHORNE)
- PLANT 151 SHRUBS – 18-36" AT STREET PLANTINGS AND 36" ELSEWHERE (RHODODENDRON, JAPANESE YEW, LONGSTOCK AND BLUE HOLLY, INKBERRY AND VIBURNUM)
- UNDERSTORY OF NO MOW GROUND COVER



SWAMP WHITE OAK
QUERCUS BICOLOR



SWEETGUM
LIQUIDAMBAR
STYRACIFLUA



GRAY BIRCH
BETULA POPULIFOLIA



WASHINGTON HAWTHORNE
CRATAEGUS PHAENOPYRUM



EASTERN REDBUD
CERCIS CANADENSIS



INKBERRY
ILEX GLABRA



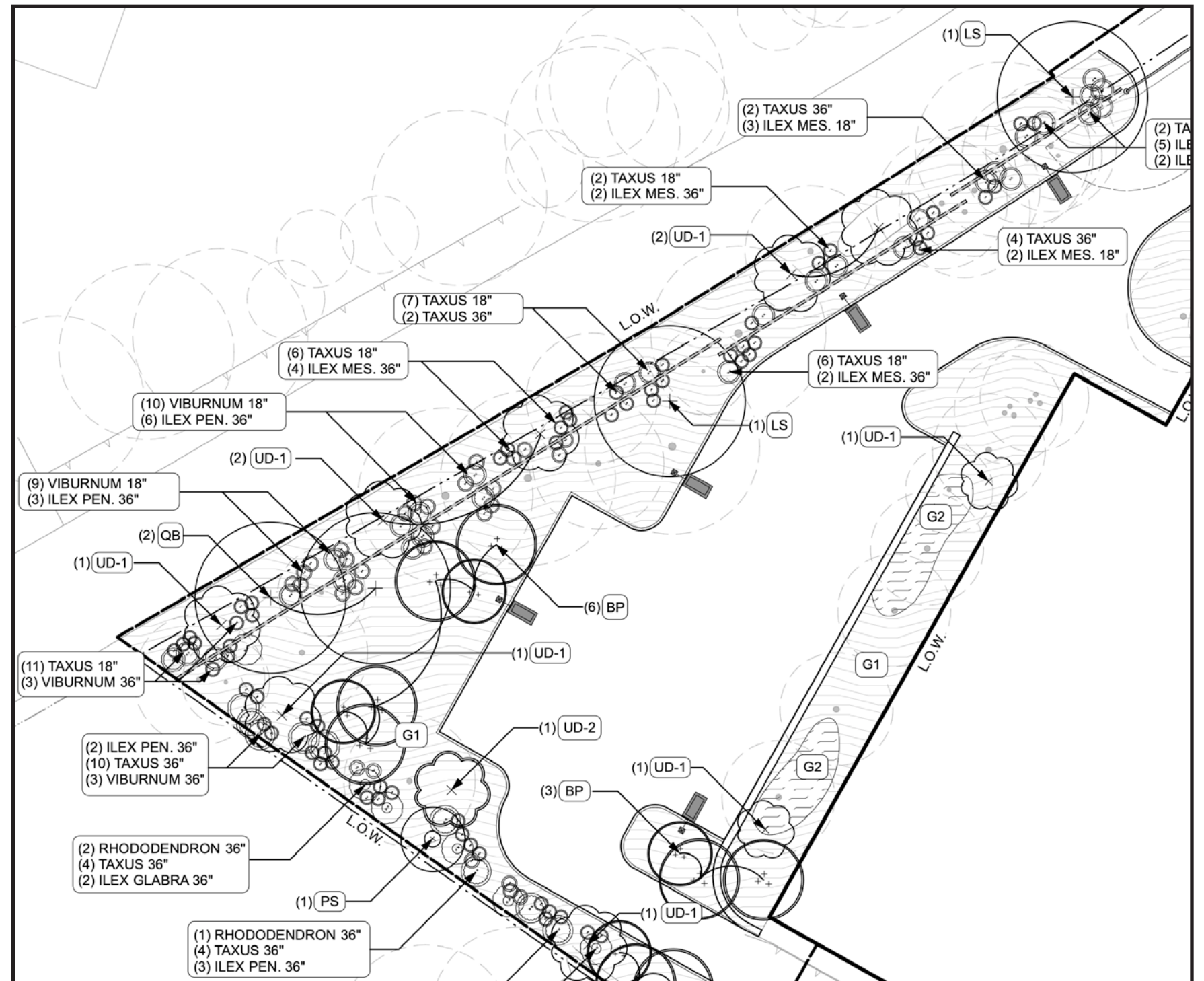
LONGSTOCK HOLLY
ILEX PENDUNCULOSA



DAVID VIBURNUM
VIBURNUM DAVIDII



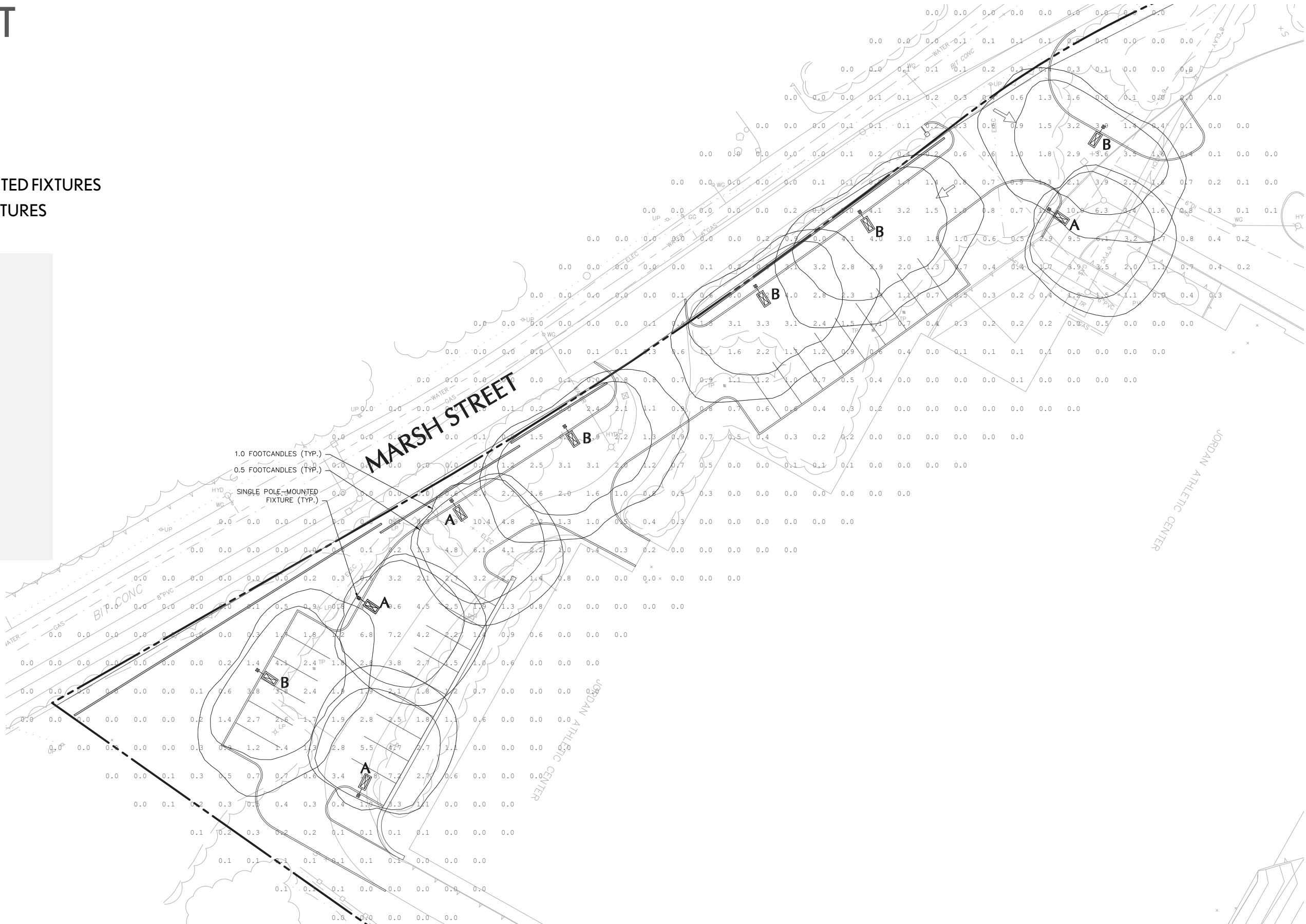
RHODODENDRON SPP.

SPREADING YEW
TAXUS CUSPIDATA

ZAMBONI LOT

LIGHTING

- ADD 9 SINGLE HEAD POLE MOUNTED FIXTURES
- 16' HEIGHT, SAME AS EXISTING FIXTURES



EAST CAMPUS



EAST CAMPUS - EXISTING

LEGEND

 PROPERTY LINE

 100' WETLAND BUFFER



EAST CAMPUS - PROPOSED PLAN



EXISTING WOODLAND

2020



2021



2022



EAST CAMPUS

FENCING

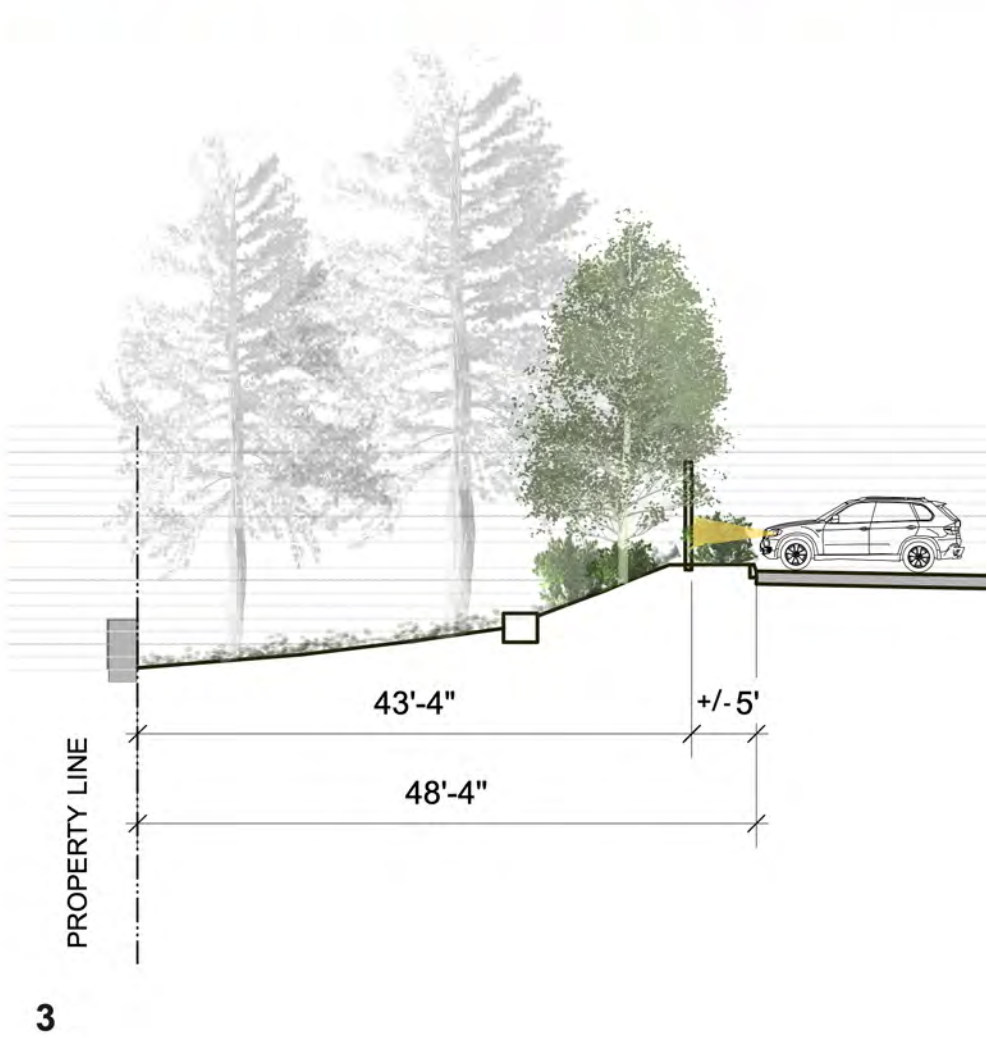
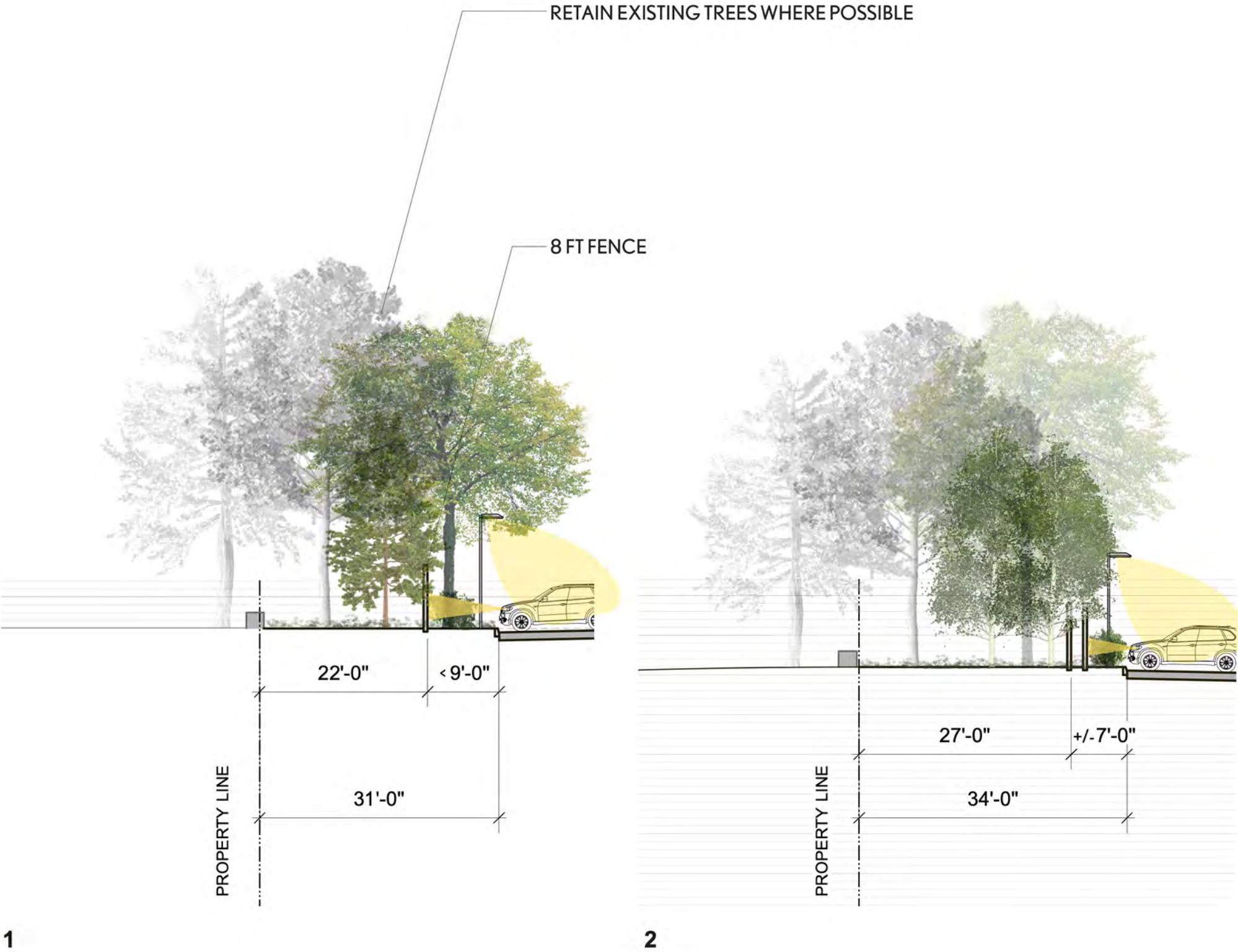


- 8' WOODEN FENCE IN 3 SEGMENTS
- ALLOW WILDLIFE ACCESS
- REDUCE EXISTING TREE REMOVAL
- USE EXISTING TOPOGRAPHY TO MINIMIZE LIGHT FROM CARS TO BACKYARDS AND HOMES



EAST CAMPUS

IN SECTION





EAST CAMPUS

INTRODUCING PARKING



- GRADING KEPT AS TIGHT AS POSSIBLE TO PRESERVE EXISTING TREES ALONG ABUTTING PROPERTIES AND TOWARDS FLAGGED WETLAND

EAST CAMPUS

IMPACT ON EXISTING CANOPY



EAST CAMPUS

EXPANDING THE CANOPY



- PLANTING 82 TREES IN/AROUND PARKING LOT
- PLANTING 46 TREES ALONG ROADWAY AND FACILITIES LOT PERIMETER
- PLANTING TOTAL OF 128 NEW TREES AND 669 NEW SHRUBS IN EAST CAMPUS



EAST CAMPUS

CANOPY AT MATURITY

EAST CAMPUS

PROPERTY LINE PLANTING

- PLANT 600 FEET ALONG PARK AVENUE AND 475 FEET ALONG RUTLEDGE RD BOUNDARY (BOTH SIDES OF FENCE)
- RETAIN AS MANY TREES AS POSSIBLE, NORTH AND SOUTH OF ENTRY DRIVE OFF PARK, AREAS OUTSIDE LOW ALONG RUTLEDGE RD
- PLANT 30 TREES – 3-4" DBH (TULIP POPLAR, WHITE PINE, QUAKING ASPEN, AMERICAN ELM)
- PLANT 358 SHRUBS – 18-36" AT STREET PLANTINGS AND 36" ELSEWHERE (CHOKEBERRY, SPICEBUSH, SUMMERSWEET, BLUE AND LONGSTOCK HOLLY, INKBERRY AND VIBURNUM)
- UNDERSTORY OF WOODLAND PLANTING (FERNS, WOOD ASTER, PENNSYLVANIA SEDGE)



SUGAR MAPPLE
ACER SACCHARUM



SWAMP WHITE OAK
QUERCUS BICOLOR



SWEETGUM
LIQUIDMBAR
STYRACIFLUA



WHITE PINE
PINUS STROBUS



EASTERN REDBUD
CERCIS CANADENSIS



WASHINGTON HAWTHORNE
CRATAEGUS PHAENOPYRUM



WITCHHAZEL
HAMAMELIS VIRGINIANA



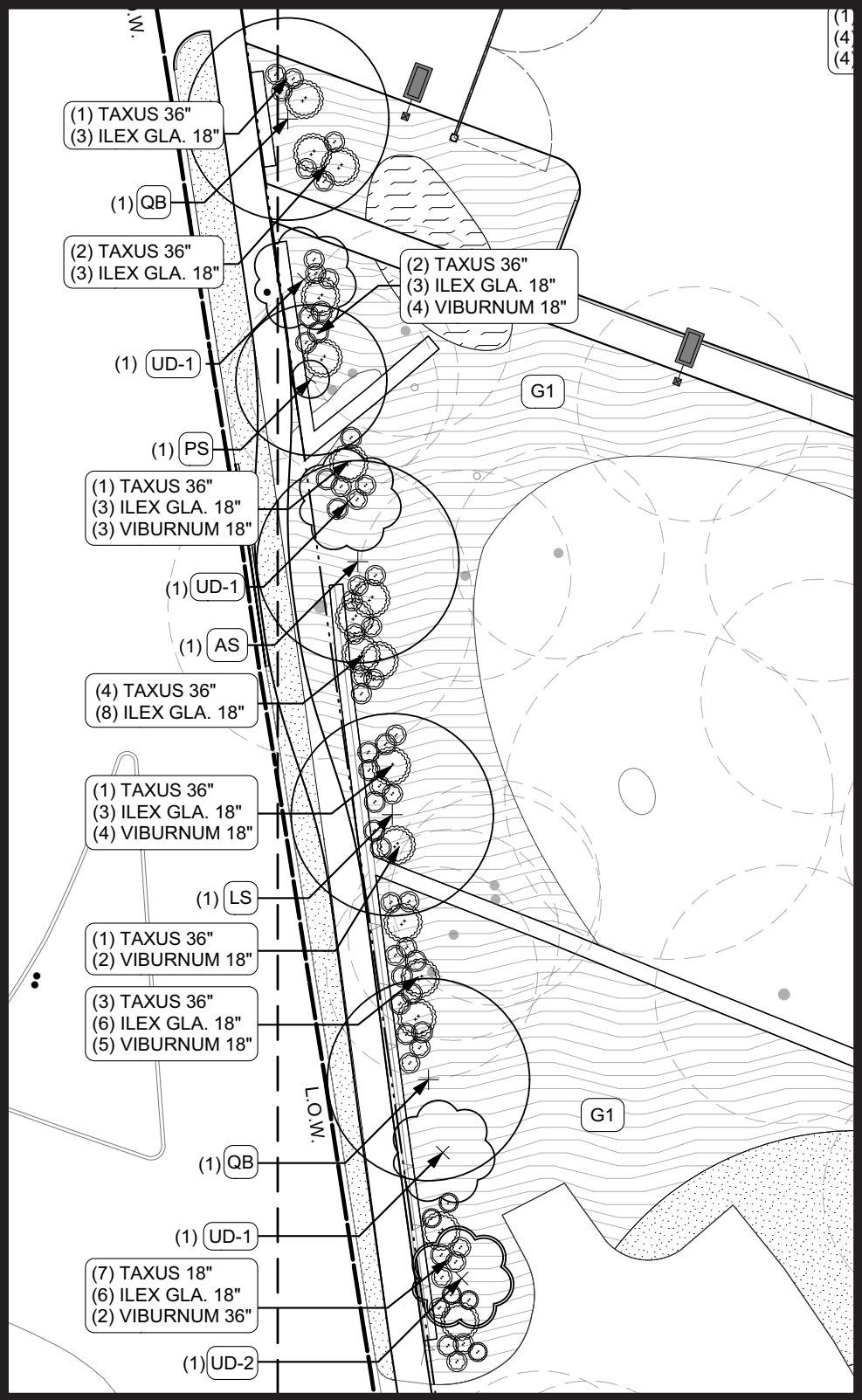
INKBERRY
ILEX GLABRA



SPREADING YEW
TAXUS CUSPIDATA



DAVID VIBURNUM
VIBURNUM DAVIDII



EAST CAMPUS

SWALE PLANTING



ACER RUBRUM
RED MAPLE



QUAKING ASPEN
POPULUS TREMULOIDES



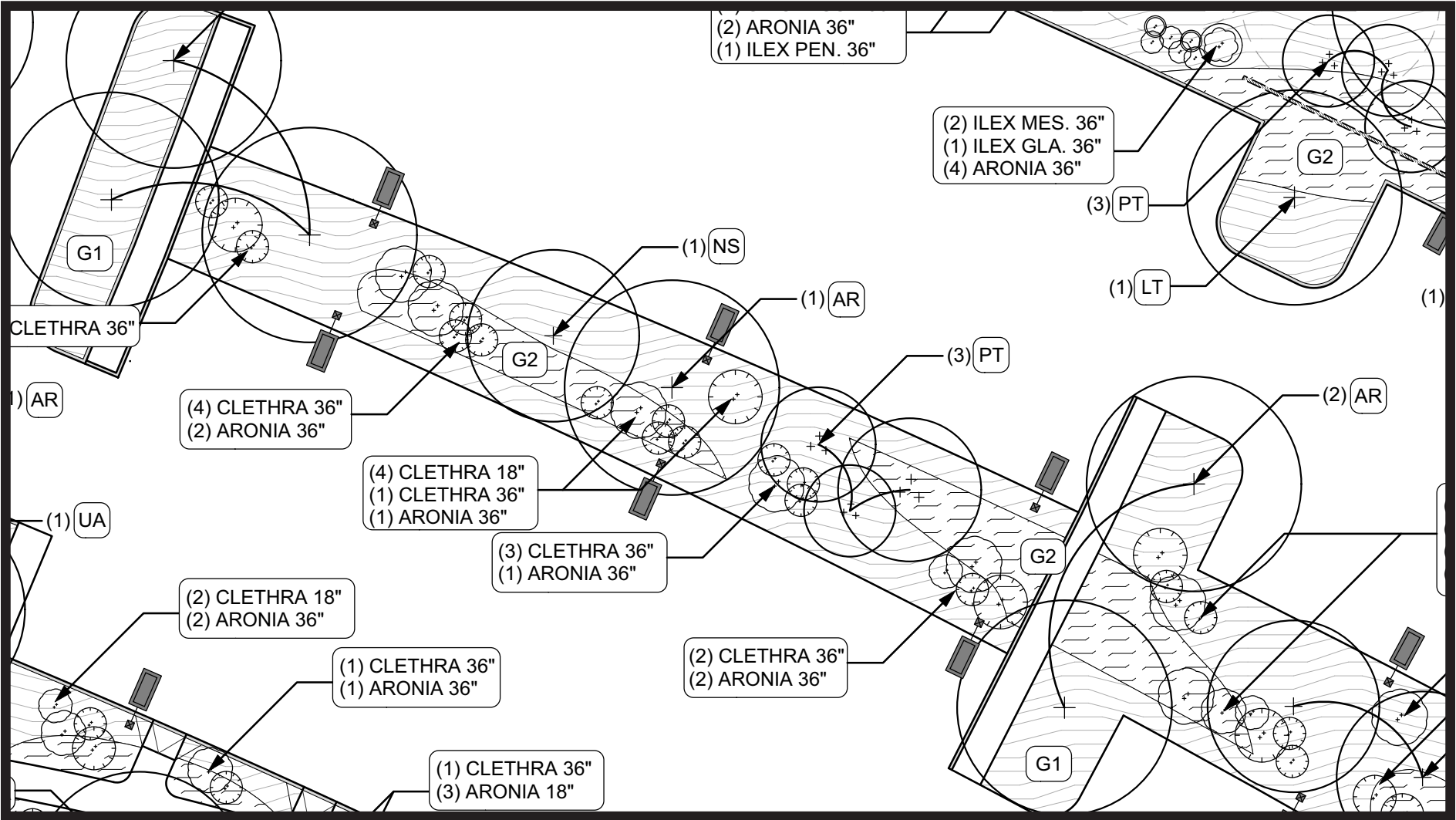
BLACK TUPELO
NYSSA SYLVATICA



CHOKEBERRY
ARONIA ARBUTIFOLIA

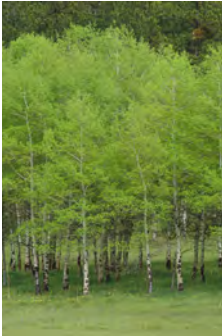


SUMMERSWEET
CLETHRA ALNIFOLIA



EAST CAMPUS

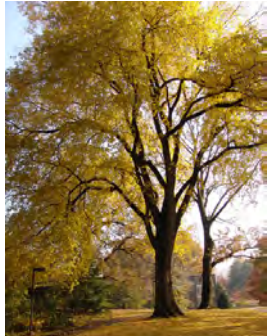
SCREEN PLANTING



QUAKING ASPEN
POPULUS
TREMULOIDES



TULIP POPLAR
LIRIODENDRON
TULIPIFERA



AMERICAN ELM
ULMUS AMERICANA



WHITE PINE
PINUS STROBUS



WITCHHAZEL
HAMAMELIS VIRGINIANA



SPICEBUSH
LINDERA BENZOIN



CHOKEBERRY
ARONIA ARBUTIFOLIA



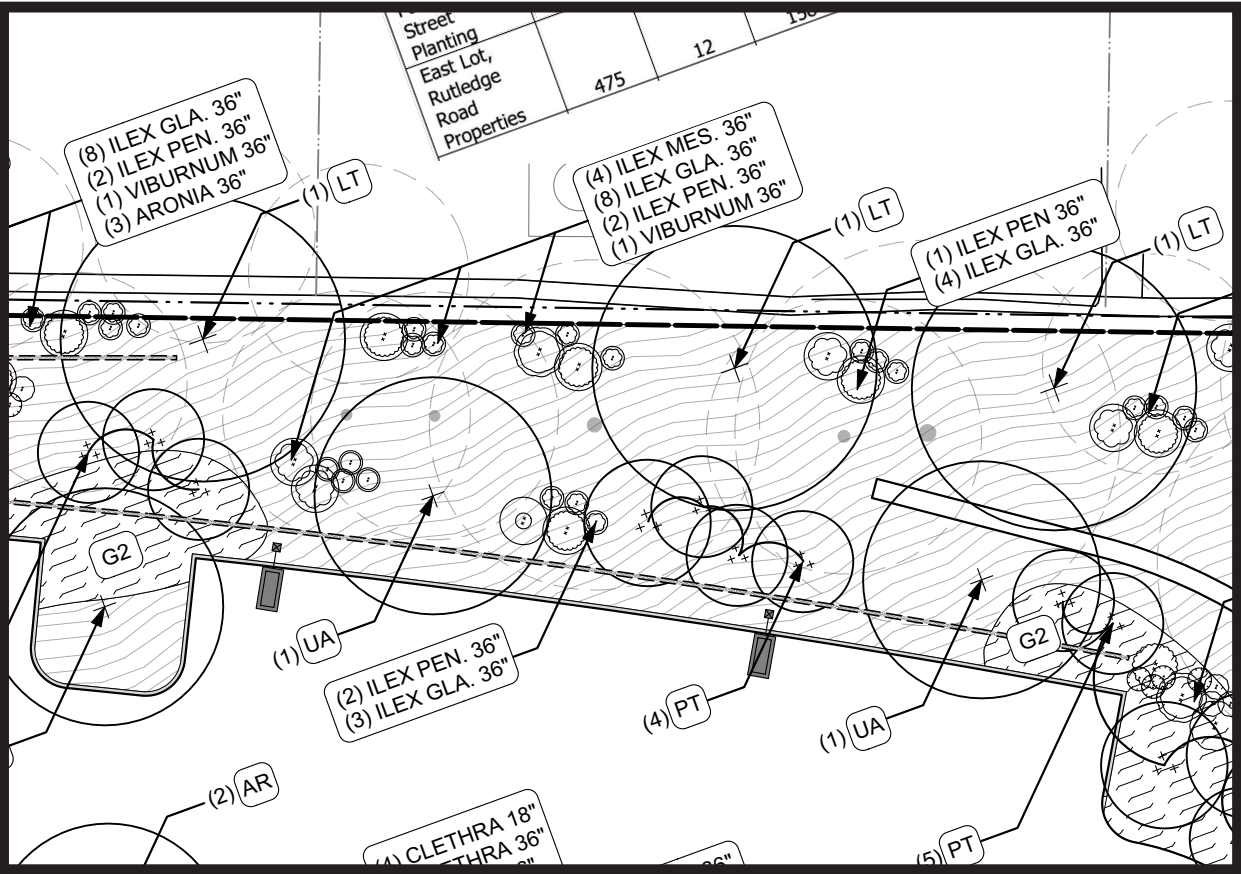
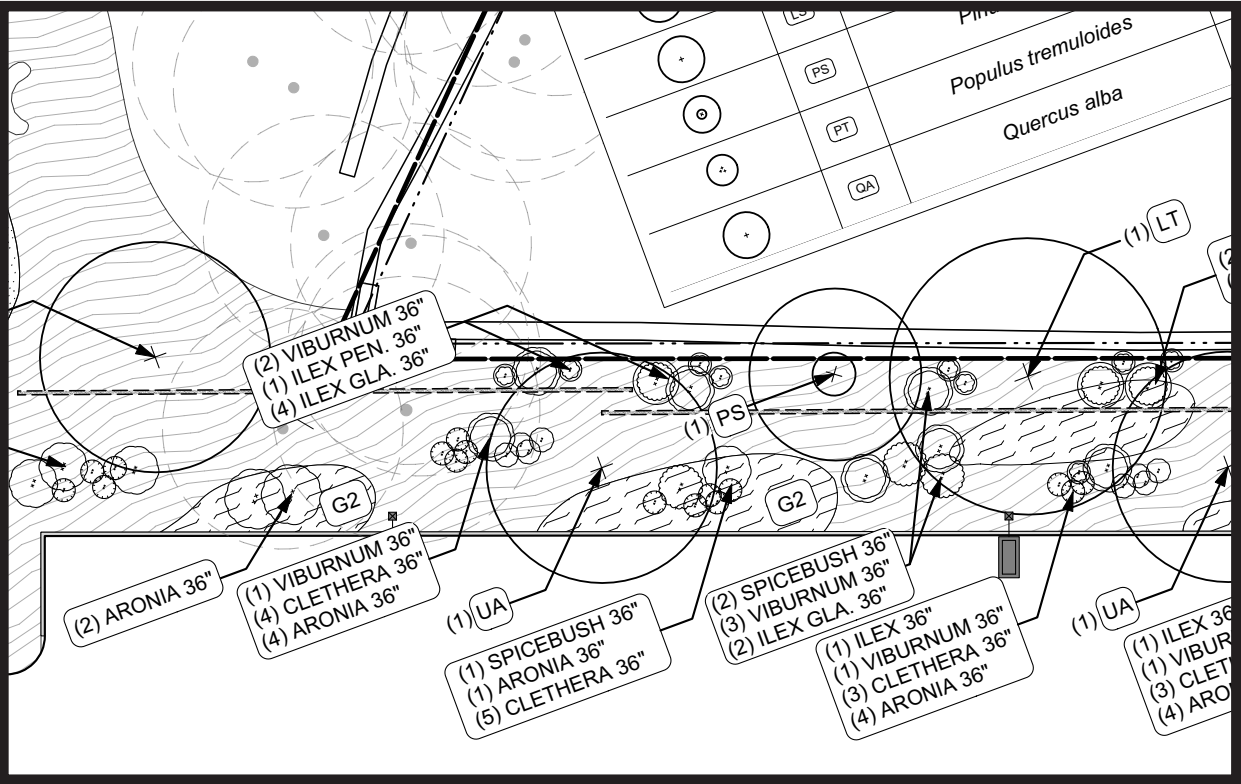
SUMMERSWEET
CLETHRA ALNIFOLIA



WINTERBERRY
ILEX VERTICILLATA



LONGSTALK HOLLY
ILEX PENDUNCULOSA



EAST CAMPUS

LIGHTING

- FIXTURES ARE FULL CUT OFF AND DARK SKY FRIENDLY
- PARKING LOT LIGHTS TO MATCH EXISTING ON CAMPUS
- 16' POLE WITH LED LIGHT AND ASYMMETRICAL FLAT BEAM (SINGLE AND DOUBLE HEADS)
- 30 SINGLE HEAD FULL CUT OFF FIXTURES
- LED LIGHT AND ASYMMETRICAL FLAT BEAM
- PEDESTRIAN POLE MOUNTED FIXTURE TO MATCH EXISTING ON CAMPUS
- 8' POLE WITH 3' DECORATIVE PENN GLOBE



FACILITIES LOT - EXISTING



LEGEND

PROPERTY LINE

LIMIT OF WORK

100' WETLAND BUFFER

15' BUILDING SETBACK FROM SIDE PROPERTY LINE

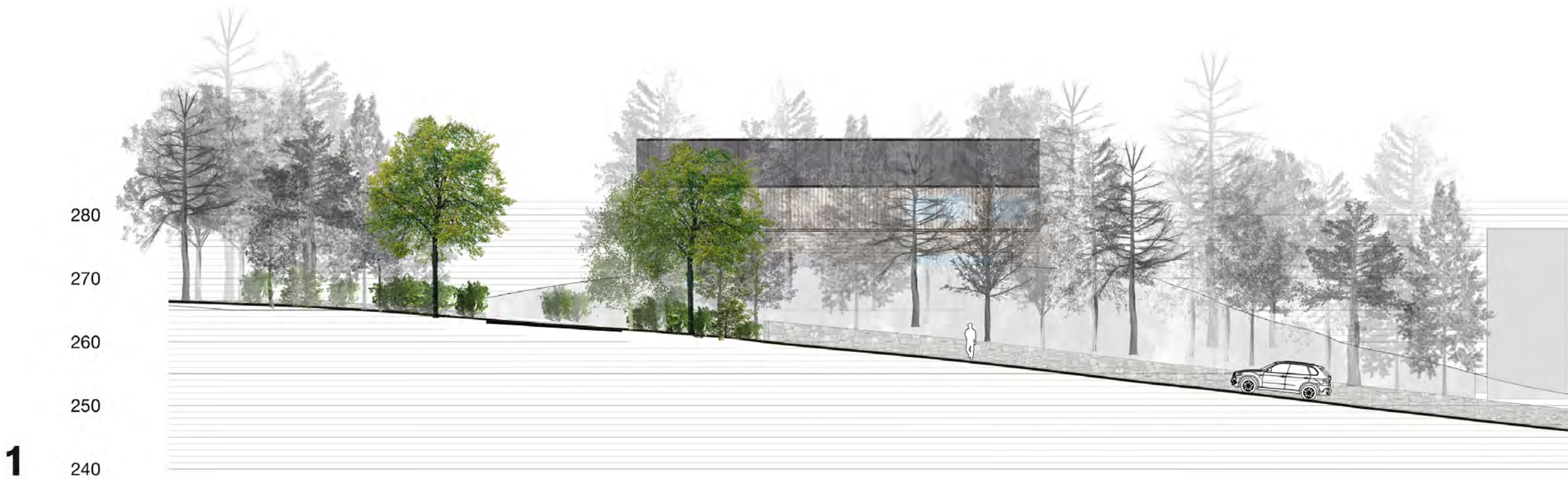
FACILITIES LOT - PROPOSED



- ALIGN BUILDING IN PARALLEL TO PROPERTY LINE AND INCREASE DISTANCE TO 269 PROSPECT PROPERTY LINE
- REMOVE FUEL STORAGE
- RELOCATE PARKING SPACES

FACILITIES LOT PREVIOUS LOCATION

ELEVATION FROM PROSPECT STREET



FACILITIES LOT REVISED LOCATION

ELEVATION FROM PROSPECT STREET



FACILITIES LOT

PLANTING

- PLANT 75' ALONG PROSPECT ST & 285' ALONG EASTERLY PROPERTY BOUNDARY
- RETAIN HEALTHY TREES WHERE POSSIBLE
- PLANT 7 TREES - 3-4" DBH (TULIP POPLAR, WHITE PINE, QUAKING ASPEN)
- PLANT 151 SHRUBS -18-36" (LONGSTOCK AND BLUE HOLLY, AND INKBERRY)
- UNDERSTORY OF WOODLAND GROUNDCOVER (PENNSYLVANIA SEDGE, WOOD ASTER, LADY FERN, HAY-SCENTED FERN, CINNAMON FERN)



QUAKING ASPEN
POPULUS TREMULOIDES



TULIP POPLAR
LIRIODENDRON TULIPIFERA



WHITE PINE
PINUS STROBUS



SWAMP WHITE OAK
QUERCUS BICOLOR



SWEETGUM
LIQUIDAMBAR
STYRACIFLUA



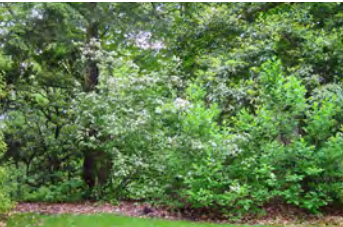
WITCHHAZEL
HAMAMELIS
VIRGINIANA



LONGSTALK HOLLY
ILEX PENDUNCULOSA



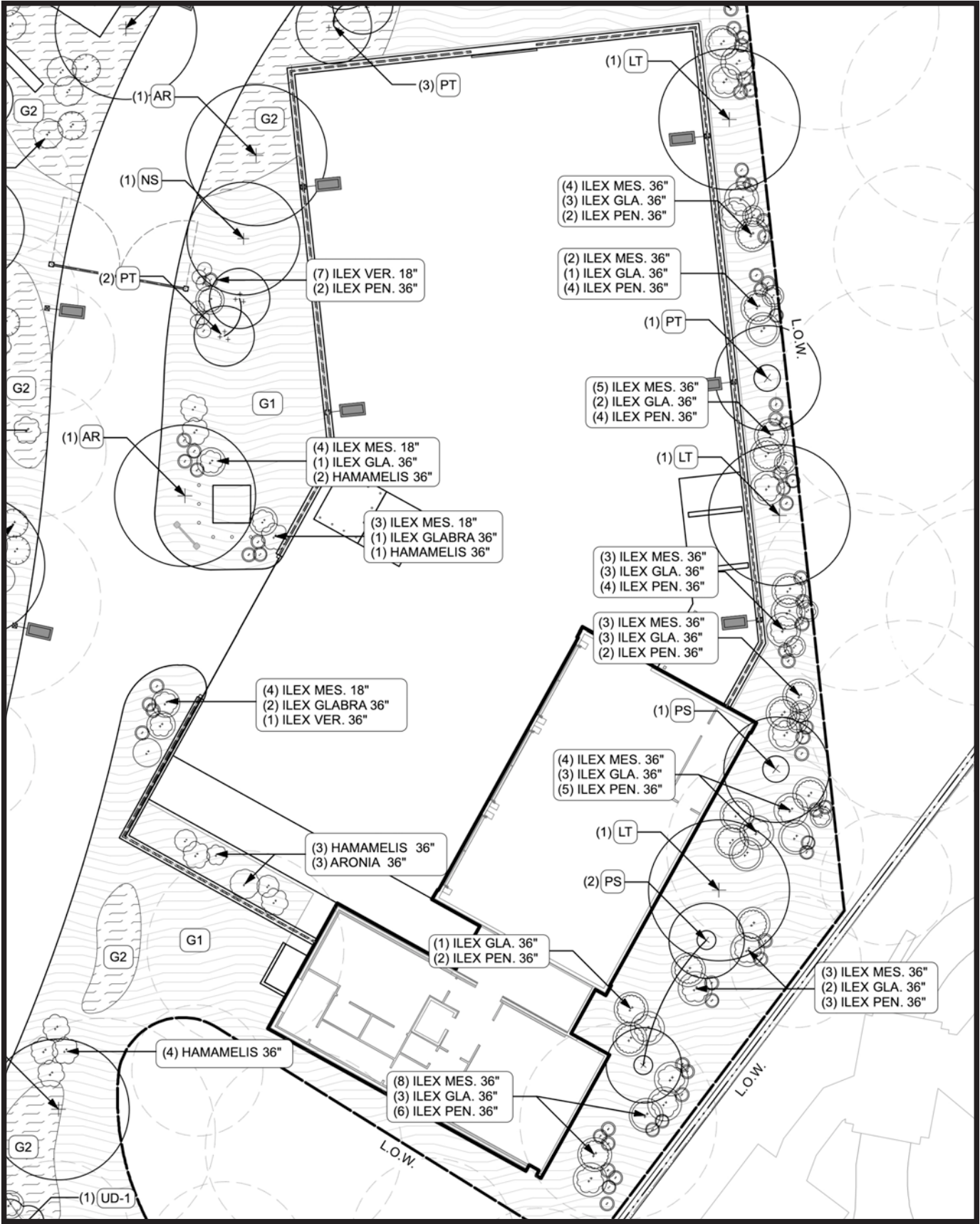
WINTERBERRY
ILEX VERTICILLATA



CHOKEBERRY
ARONIA ARBUTIFOLIA



BLUE HOLLY
ILEX X MESERVEAE

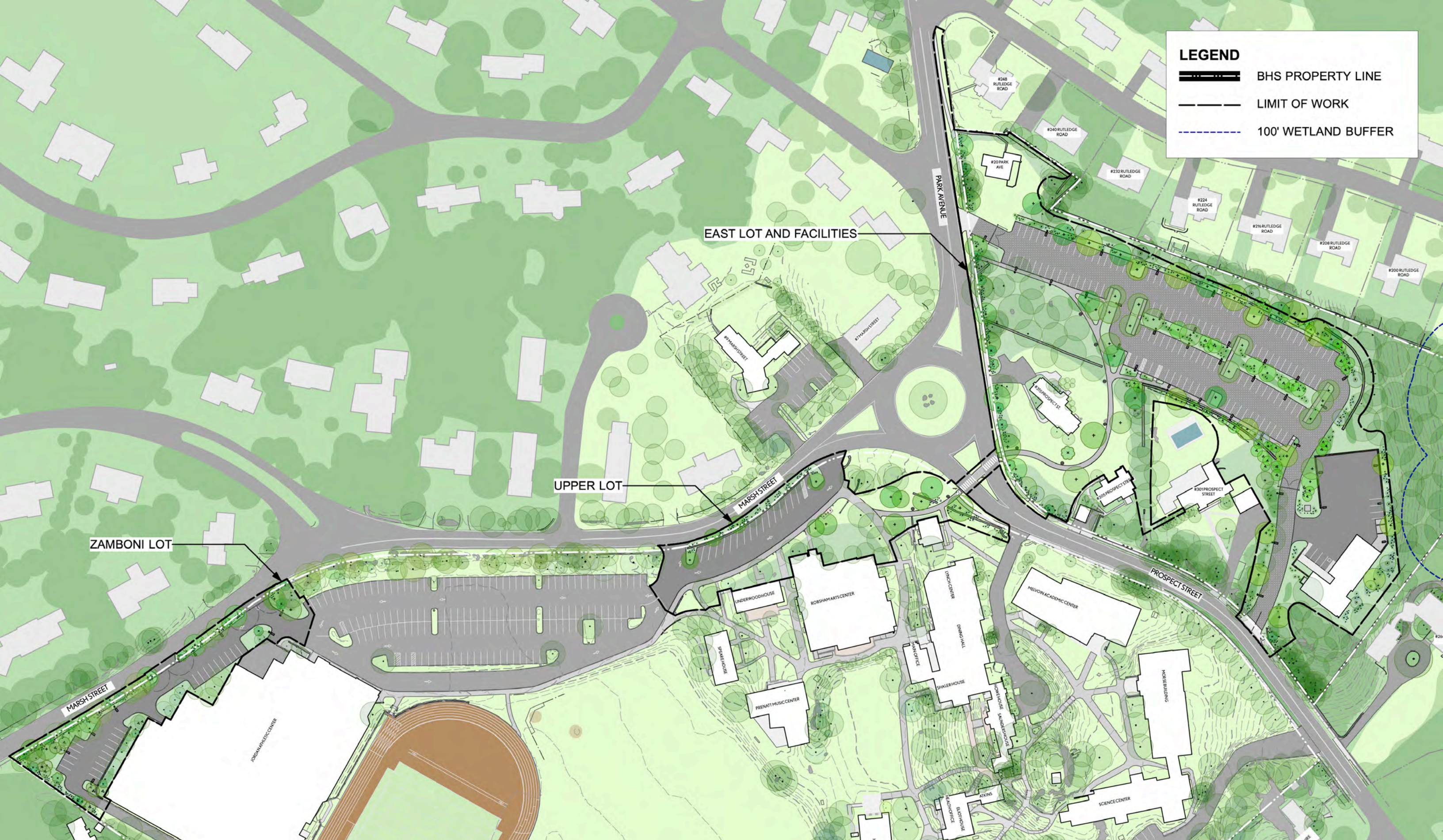


FACILITIES LOT

LIGHTING

- FIXTURES ARE FULL CUT OFF AND DARK SKY FRIENDLY
- YARD LIGHTS AND DRIVEWAY TO MATCH EXISTING ON CAMPUS
- 16' POLE WITH LED LIGHT AND ASYMMETRICAL FLAT BEAM (SINGLE HEADS)
- BUILDING MOUNTED FIXTURE





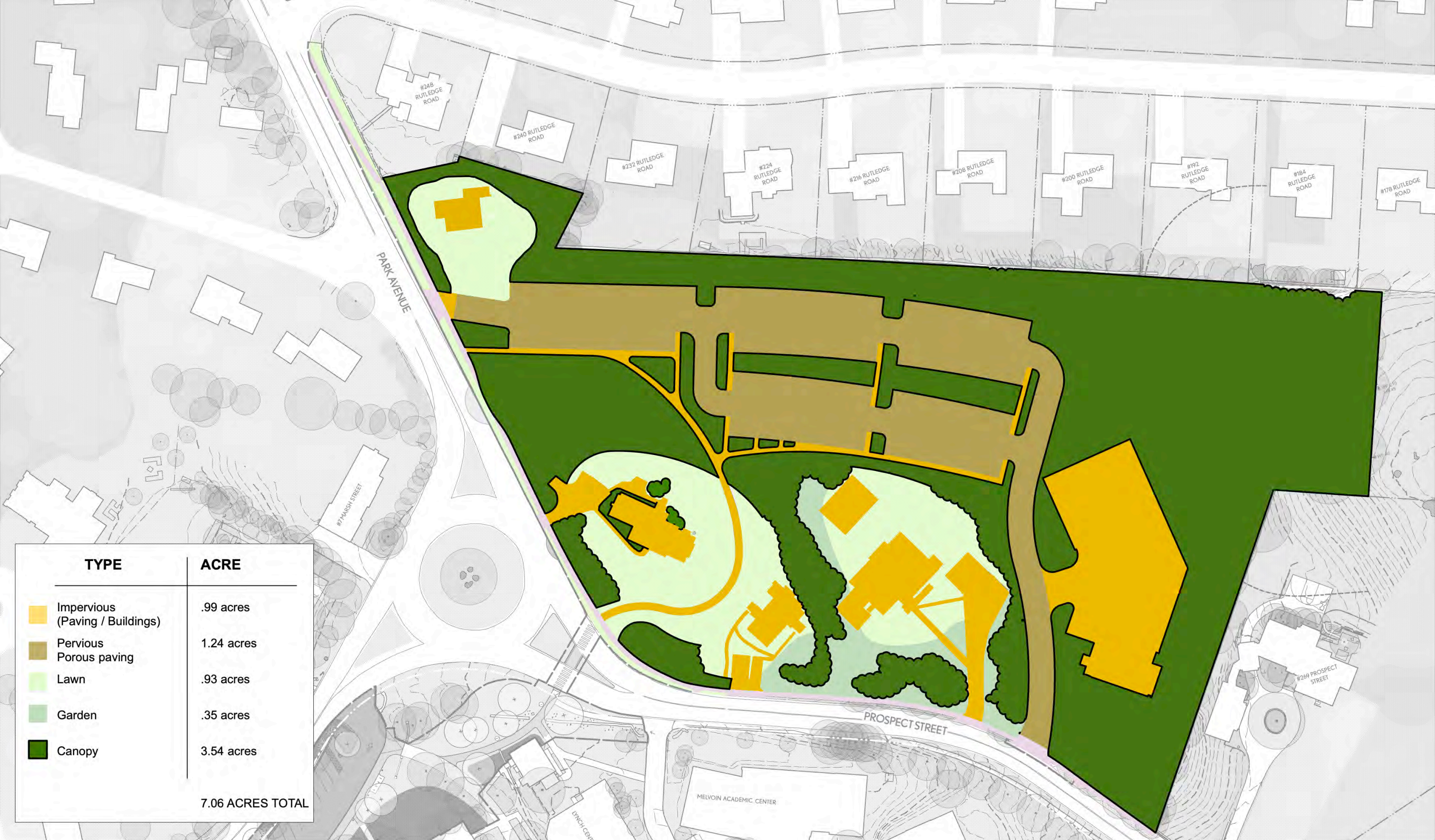
LEGEND

- BHS PROPERTY LINE
- LIMIT OF WORK
- 100' WETLAND BUFFER

THANK YOU



TYPE	ACRE
Impervious (Paving / Buildings)	0.73 acres
Pervious Porous paving	0 acres
Lawn	1.15 acres
Garden	0.35 acres
Canopy	4.83 acres
7.06 ACRES TOTAL	



TYPE	ACRE
Impervious (Paving / Buildings)	.99 acres
Pervious Porous paving	1.24 acres
Lawn	.93 acres
Garden	.35 acres
Canopy	3.54 acres
7.06 ACRES TOTAL	