



BELMONT HILL SCHOOL

Design and Site Plan Review

*Belmont Planning Board
Case 23-004
February 7, 2023*

Existing Conditions



BELMONT HILL SCHOOL

100
1923-2023
2

Main Campus Project Layout



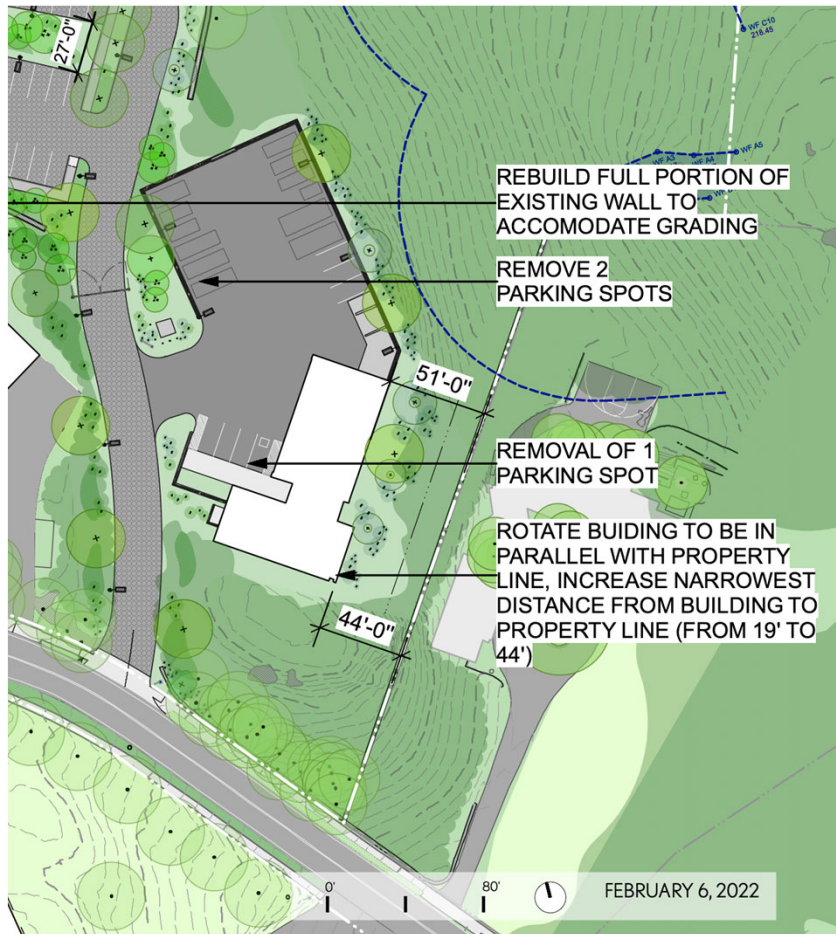
East Campus - Existing Conditions



East Campus – Modified Project



Facilities Building and Yard– Modified Project



- Move Building away from easterly property boundary
- Remove Outdoor Above ground Fuel Storage Tanks
- Remove 3 parking spaces

Facilities Building Elevation and Planting

