

DOOR SCHEDULE			
NUMBER	QTY	DIMENSIONS	DESCRIPTION
D01	2	108X96"	GARAGE
D02	1	36X80X1 3/4"	EXT.
D03	1	128X96"	EXT. QUAD SLIDER-GLASS
D04	1	32X80X1 3/4"	HINGED-PANEL
D05	1	28X80X1 3/8"	
D06	1	36X96X1 3/8"	EXT. HINGED-GLASS
D07	1	32X80X1 3/4"	
D08	1	72X96"	EXT. SLIDER-GLASS
D09	1	19X80X1 3/8"	

WINDOW SCHEDULE			
NUMBER	QTY	DIMENSION	DESCRIPTION
W01	1	32"X48"	SNGL CASEMENT-HR
W02	1	48"X54"	DBL CASEMENT-LHL/RHR
W03	4	32"X60"	SNGL CASEMENT-HR
W04	1	18"X96"	FIXED GLASS
W05	2	36"X60"	SNGL CASEMENT-HR



NEW RESIDENCE 87 GODEN STREET BELMONT MA	NORDESIGN & BUILD LLC ARCHITECTS 21 HOUGH RPOAD BELMONT MA 02478 617-283-5299	FIRST FLOOR PLAN 3/16"=1'-0"	A-2 6/15/23
--	--	------------------------------------	----------------

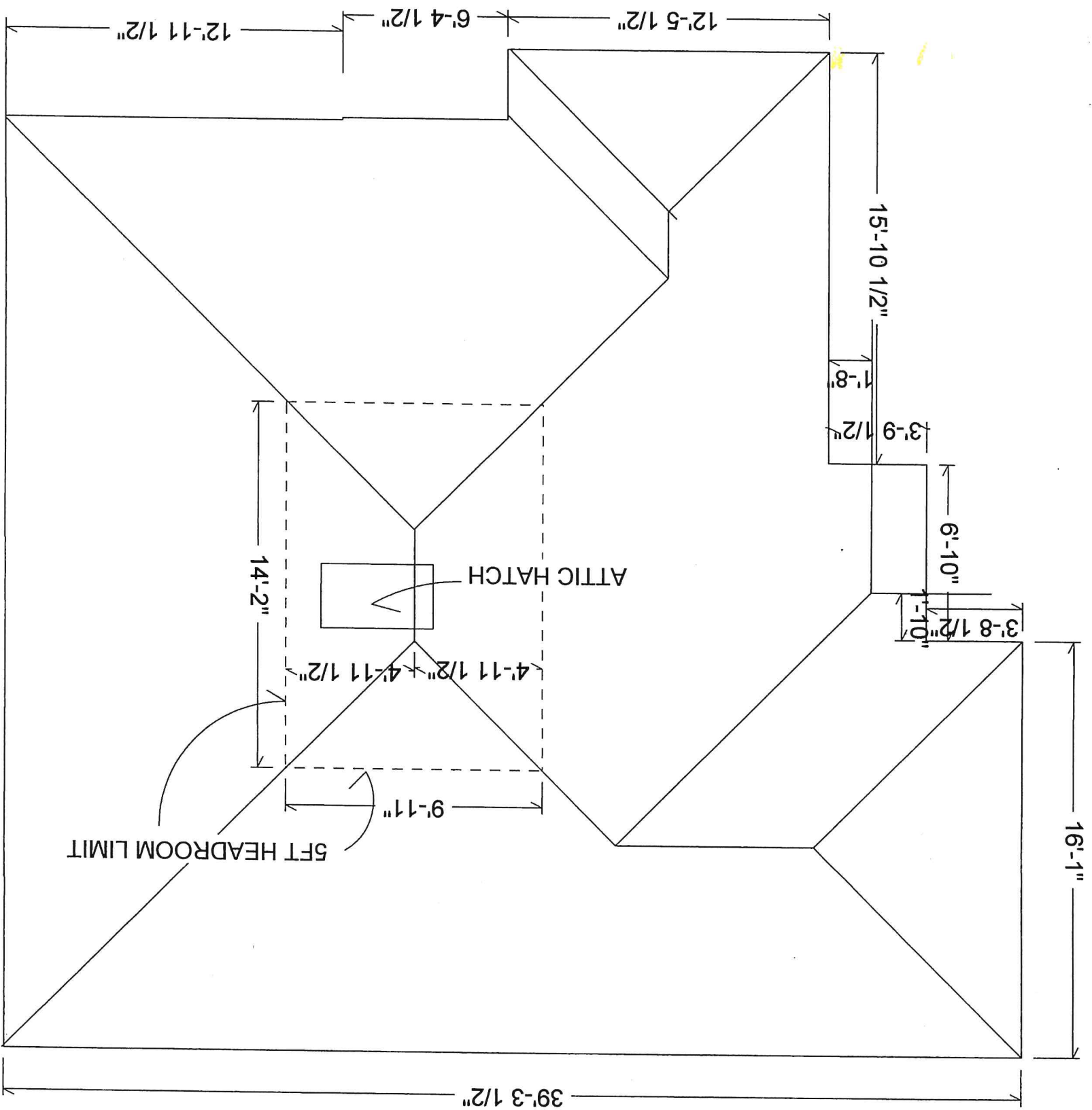
1291 sq ft



DOOR SCHEDULE			
NUMBER	QTY	DIMENSIONS	DESCRIPTION
D01	1	72X84"	EXT. SLIDER-GLASS
D02	2	60X80"	SLIDER
D03	3	32X80X1 3/8"	
D04	2	28X80X1 3/8"	
D05	1	36X80"	BIFOLD
D06	1	32X80X1 3/8"	EXT. HINGED-GLASS
D07	1	24X80X1 3/8"	
D08	1	30X80X1 3/8"	POCKET
D09	1	60X84"	SLIDER-GLASS

WINDOW SCHEDULE			
NUMBER	QTY	DIMENSIONS	DESCRIPTION
01	4	24"X16"	FIXED GLASS
02	6	32"X60"	SNGL CASEMENT-HR
03	4	36"X60"	SNGL CASEMENT-HR
04	2	28"X28"	AWNING
05	2	30"X60"	SNGL CASEMENT-HR
06	1	60"X60"	DBL CASEMENT-LHL/RHR
07	1	36"X24"	AWNING

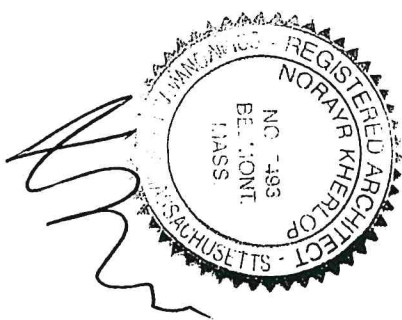
A-3
8/15/23



2ND FLOOR AREA 1300SF

5FT HEADROOM AREA =
9.92x14.16 = 140.5 SF

140.5 / 1300 = 10.8% < 60%

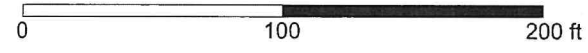


NEW RESIDENCE 87 GODEN STREET BELMONT MA	NORDESIGN & BUILD LLC ARCHITECTS 21 HOUGH RPOAD BELMONT MA 02478 617-283-5299	HALF STORY CALCS 3/16"=1'-0"	A-4 6/15/23
--	--	------------------------------------	----------------



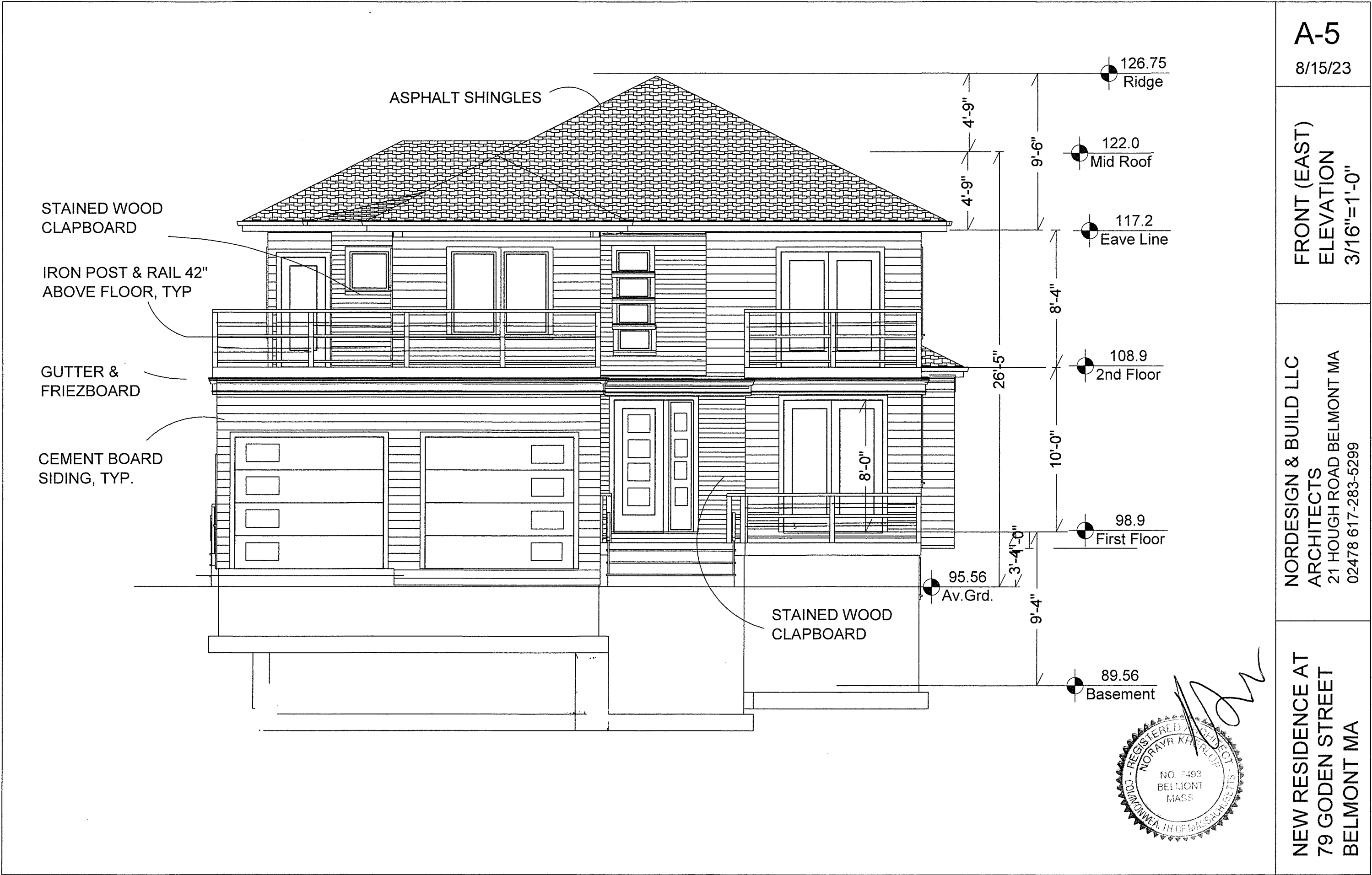
- Town-Owned Buildings
- McLean Buildings
- BUILDINGS
- Parcels
- Town Boundary
- MA Highways
 - Interstate
 - US Highway
 - Numbered Routes
- Charles_poly
- Charles_arc
- Abutting Town Labels
- Abutting Towns
- Roads
 - Major Road, Collector
 - Minor Road, Arterial

The data shown on this site are provided for informational and planning purposes only. The Town and its consultants are not responsible for the misuse or misrepresentation of the data.



Printed on 03/31/2023 at 12:56 PM





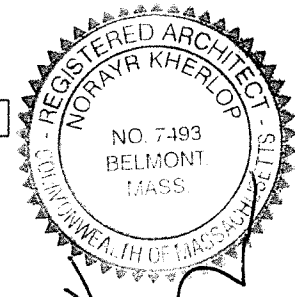
A-5

8/15/23

FRONT (EAST)
ELEVATION
3/16"=1'-0"

NORDESIGN & BUILD LLC
ARCHITECTS
21 HOUGH ROAD BELMONT MA
02478 617-283-5299

NEW RESIDENCE AT
79 GODEN STREET
BELMONT MA



NORDESIGN & BUILD LLC
ARCHITECTS
21 HOUGH ROAD BELMONT MA
02478 617-283-5299

NEW RESIDENCE AT
87 GODEN STREET
BELMONT MA

A-6
8/15/23
NORTH ELEVATION
3/16"=1'-0"



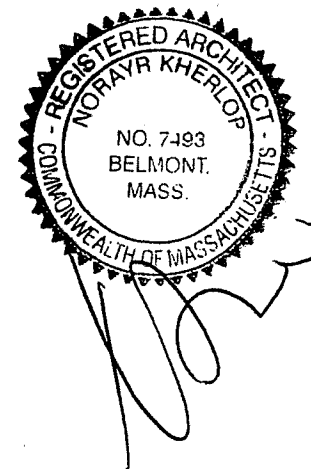
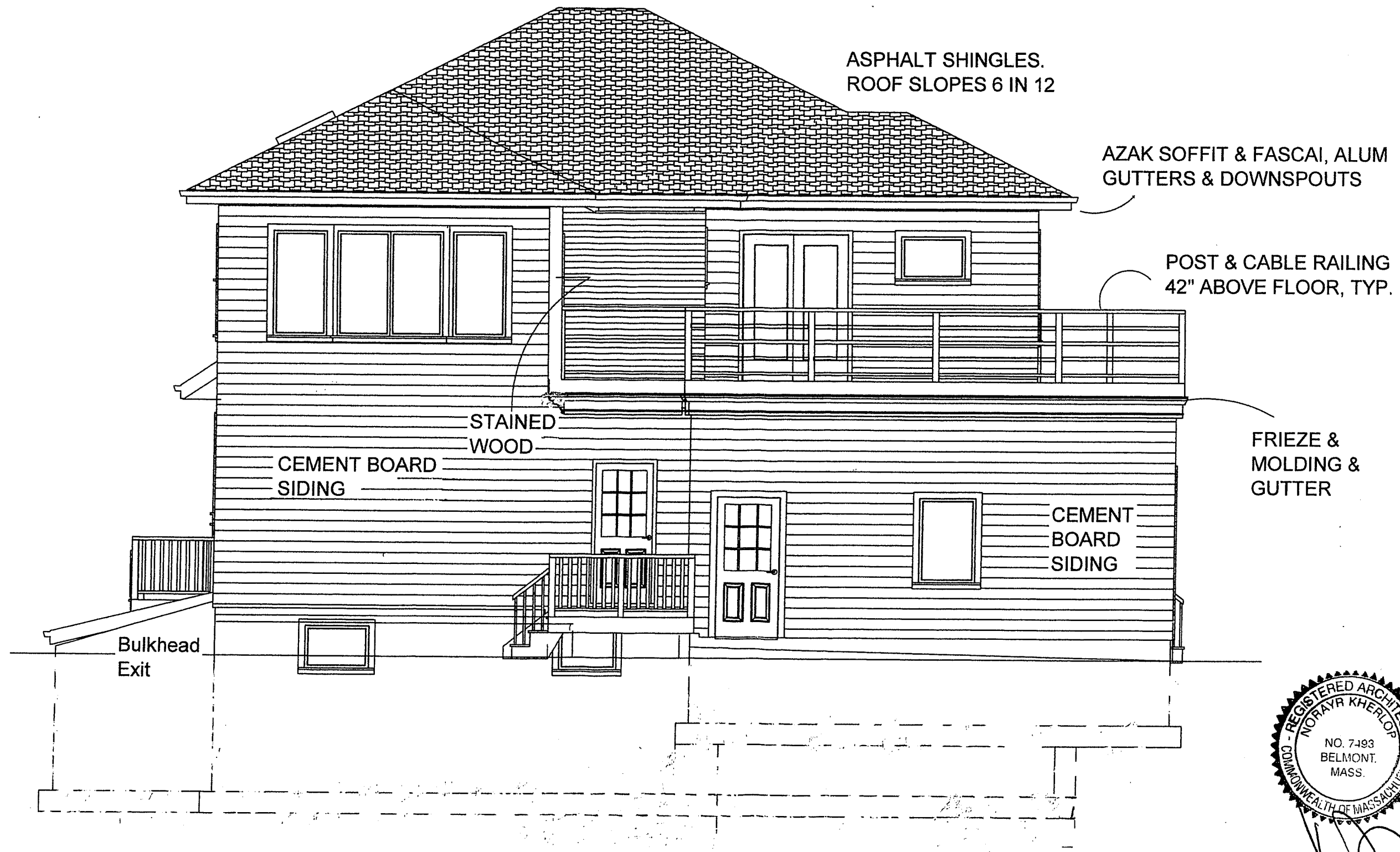
A-7

8/15/23

WEST (REAR)
ELEVATION
3/16"=1'-0"

NORDESIGN & BUILD LLC
ARCHITECTS
21 HOUGH ROAD BELMONT MA
02478 617-283-5299

NEW RESIDENCE AT
87 GODEN STREET
BELMONT MA

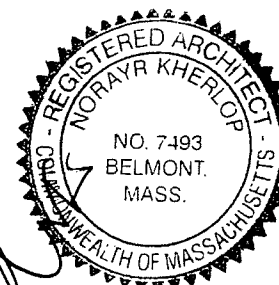
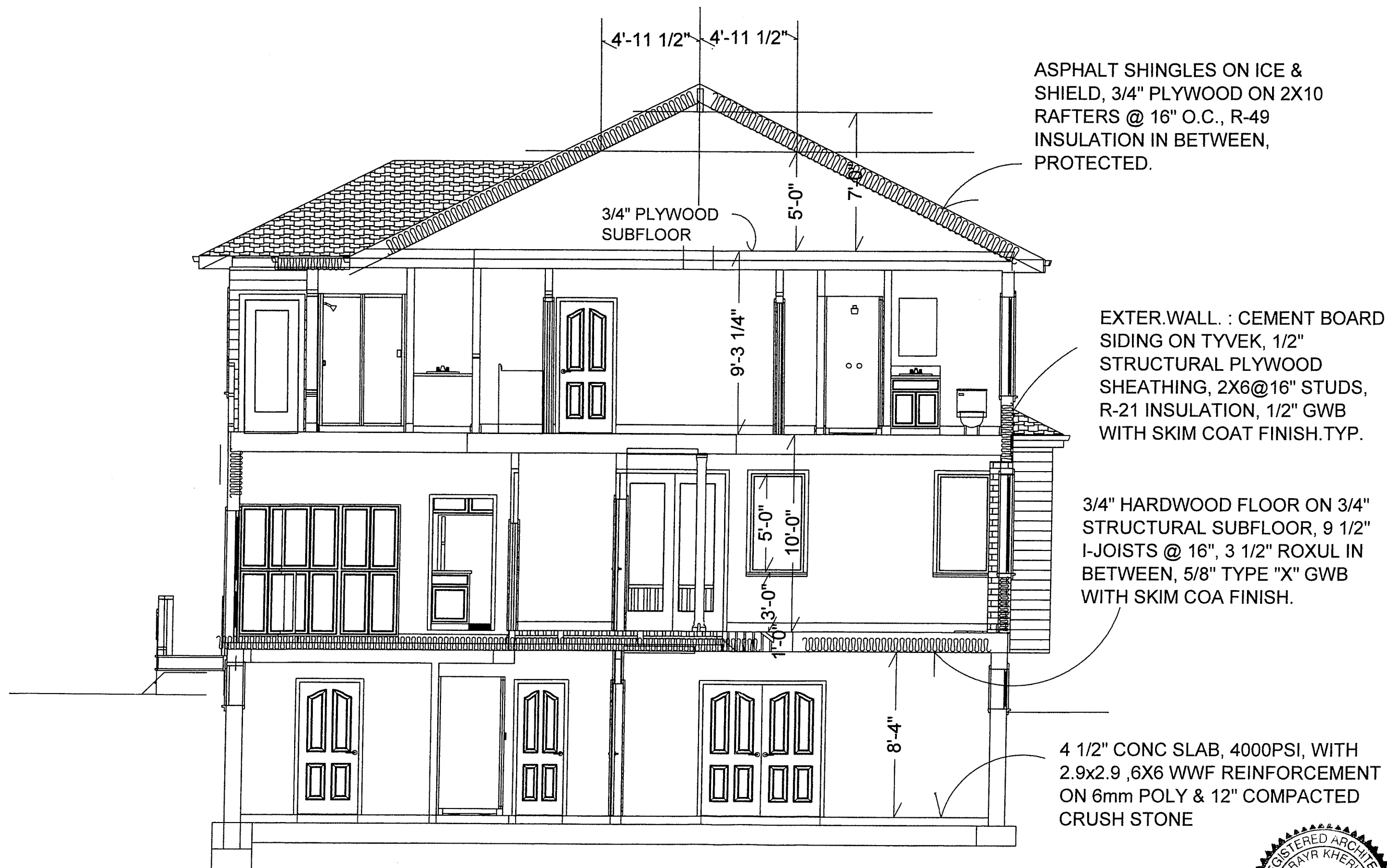


A-8
6/15/23

SOUTH ELEVATION
3/16"=1'-0"

NORDESIGN & BUILD LLC
ARCHITECTS
21 HOUGH ROAD BELMONT MA
02478 617-283-5299

NEW RESIDENCE AT
87 GODEN STREET
BELMONT MA



A-9

6/15/23

SECTION A-A
3/16"=1'-0"

NORDESIGN & BUILD LLC
ARCHITECTS
21 HOUGH ROAD BELMONT MA
02478 617-283-5299

NEW RESIDENCE AT
87 GODEN STREET
BELMONT MA