

# Belmont Middle & High School Project Update

September 2022

# Work Performed – September 2022

## Phase 1

- Continued commissioning and balancing
- Completed Summer 2022 work in Field House
- Completed installing bleachers in Field House

## Phase 2 Site Work and Utilities

- Continued raising grade via existing material
- Completed installation of athletic field drainage
- Started final grading athletic fields
- Started removing existing pavement from old High School parking lot after construction trailers were moved

## Phase 2 Exterior

- Area D
  - Completed installation of curtain-wall frames
  - Completed installation of curtain wall glass
  - Completed installation of masonry
- Area F
  - Completed installation of curtain-wall frames
  - Continued installation of curtain wall glass
  - Continued installation of masonry

## Phase 2 Interiors

- Area D
  - Completed rough-in of MEPFP's on Levels 2, 3, & 4
  - Continued rough-in of MEPFP's on Level 1
  - Continued installation of pipe and duct insulation
  - Completed installation of hollow metal frames
  - Completed installation of interior partition framing
  - Continued installation and finishing of drywall
  - Started painting on Levels 2 & 3
  - Started framing ACT ceilings on Level 2
  - Started intumescent fireproofing
- Area F
  - Continued installation of interior partition framing
  - Started installation of hollow metal frames
  - Continued rough-in of MEPFP's on all levels
  - Started installation of pipe and duct insulation

# Look Ahead – October 2022

**Phase 1**

- Continue commissioning and balancing

**Phase 2 Site Work and Utilities**

- Complete removal of existing pavement
- Complete final grading athletic fields
- Continue raising grade via existing material

**Phase 2 Exterior**

- Area F
  - Complete installation of curtain wall glass
  - Complete installation of masonry
  - Complete installation of arcade ceilings

**Phase 2 Interiors**

- Area D
  - Complete intumescent fireproofing
  - Complete rough-in of MEPFP's on all levels
  - Complete installation of pipe and duct insulation
  - Continue installation and finishing of drywall
  - Continue painting on all levels
  - Continue framing ACT ceilings
  - Start installation of casework
- Area F
  - Complete installation of interior partition framing
  - Complete installation of hollow metal frames
  - Complete rough-in of MEPFP's on all levels
  - Continue installation of pipe and duct insulation
  - Start drywall on Level 2

# Progress Photos

- Loading Bay at F North



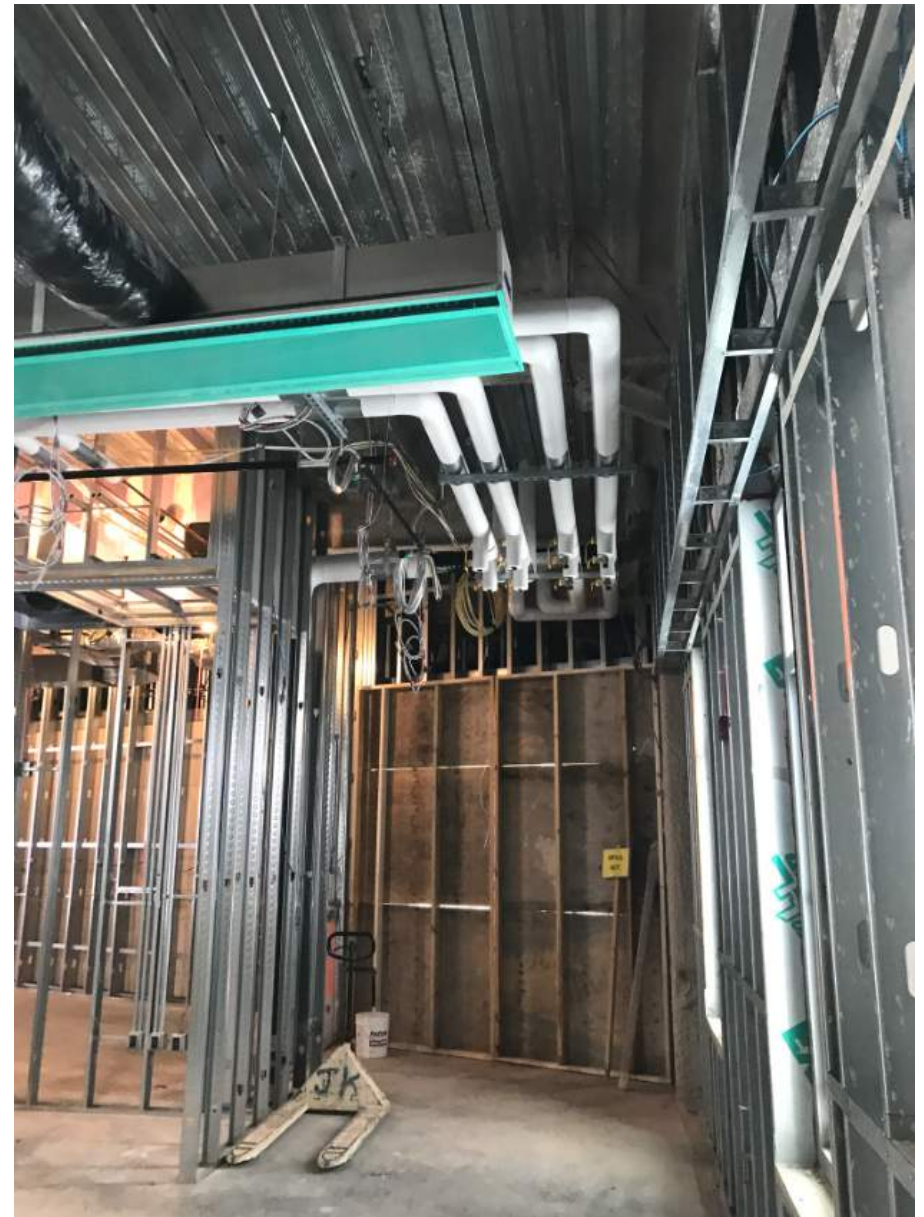
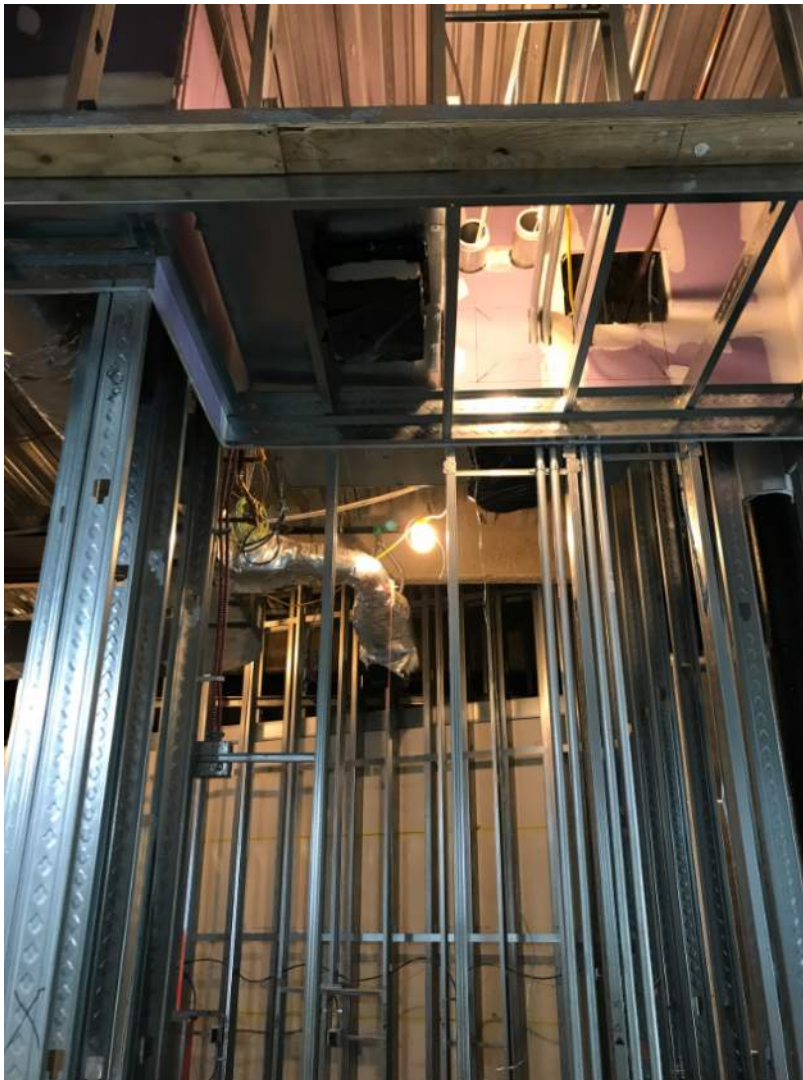
- Electrical Room Rough-in





# Progress Photos

- Interior Framing and MEP Rough-in



# Progress Photos

- Above Ceiling MEPFP Rough-in





# Progress Photos

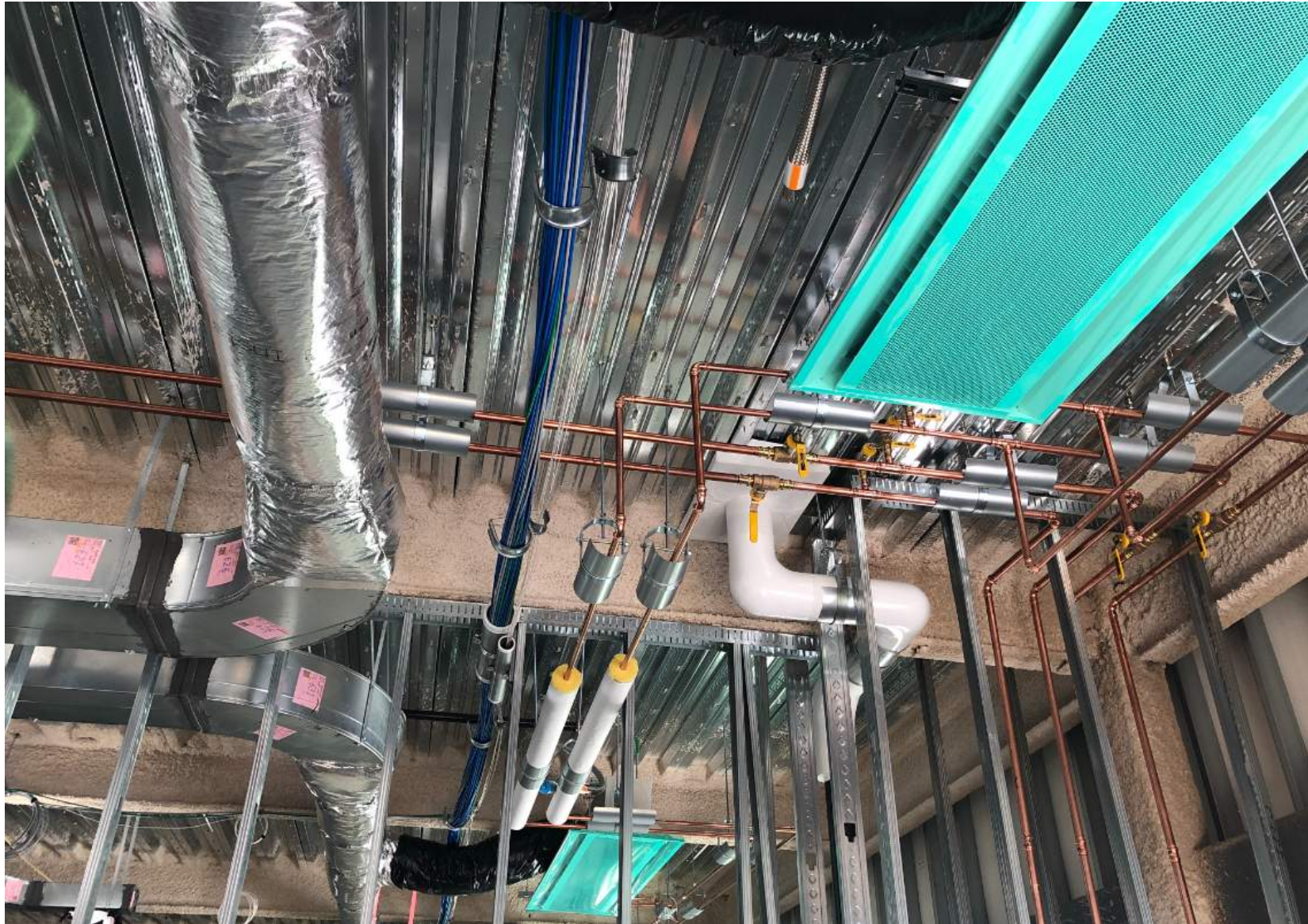
- Final Grading of Athletic Fields





# Progress Photos

- Area F MEPFP Rough-in and start of insulation





# Progress Photos

- View from Area D North, MS Media Center and Intumescent at exposed column



# Progress Photos

– Area D, Level 2 Interior Finish Status





# Progress Photos

– Middle School Accent Wall

