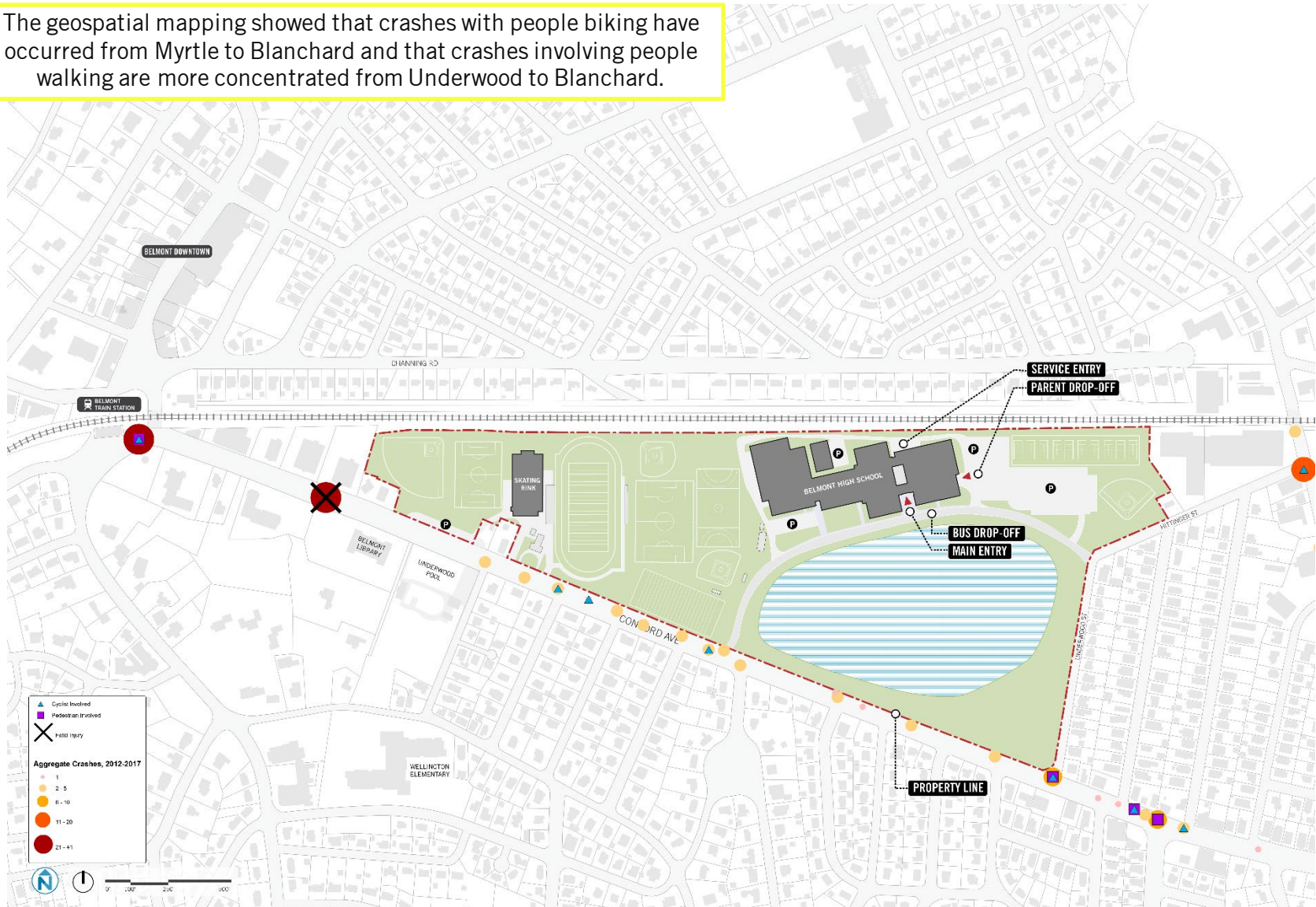
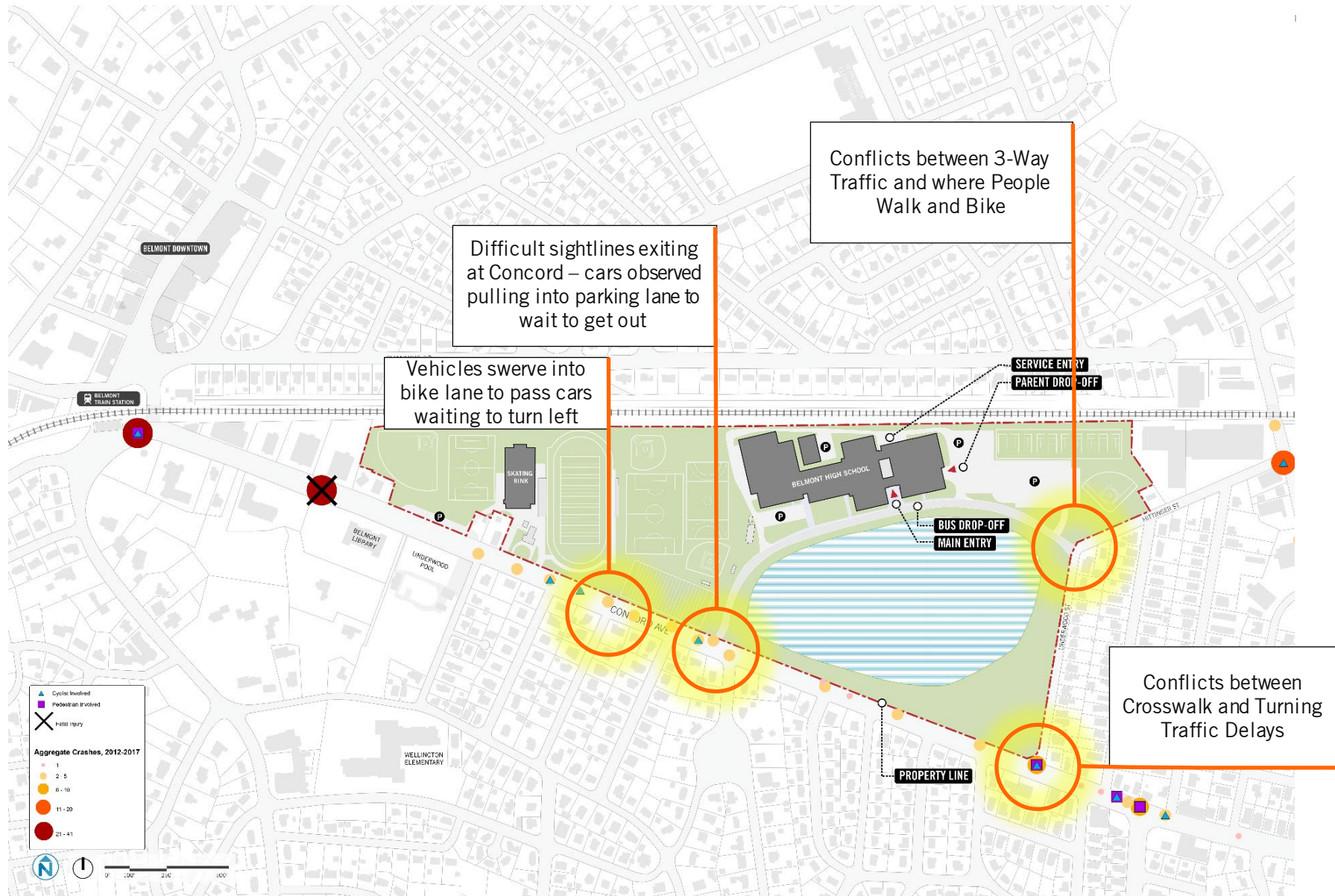


Crash Locations: 2012-2017

The geospatial mapping showed that crashes with people biking have occurred from Myrtle to Blanchard and that crashes involving people walking are more concentrated from Underwood to Blanchard.



Pointed Safety Issues Observed on Site

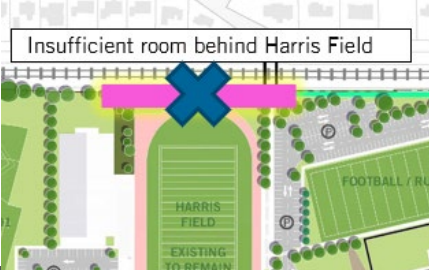
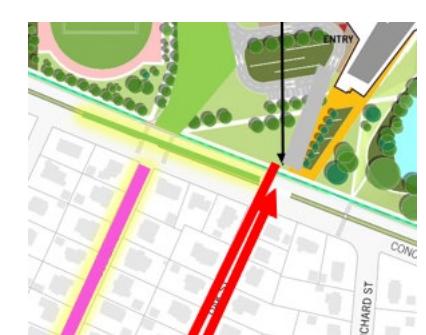
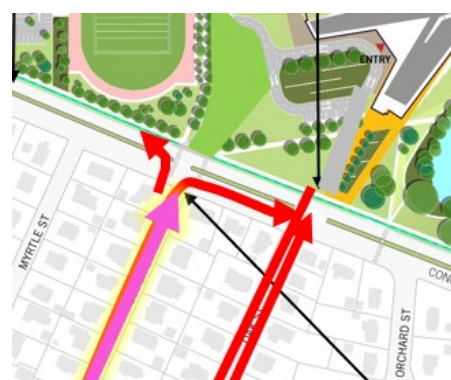
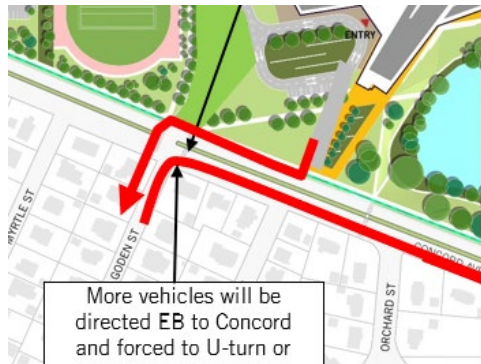
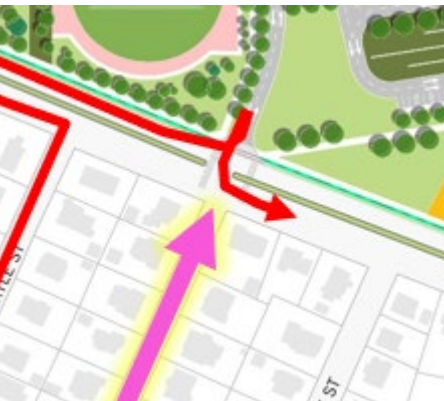


Existing Traffic Delays

AM Level of Service & Length of Queues



Iterations Considered



Future Site Plan Overview

1. Walking and biking intersection improvements throughout, Connections to existing and future multi-use paths
2. Enhanced emergency vehicle circulation
3. Reduced gameday parking spillover
4. Internal drop-off reduces queues in neighborhoods, while accommodating needed bus and ADA access.
5. Two full access drives distributes flow and reduces queues, provides options for all users

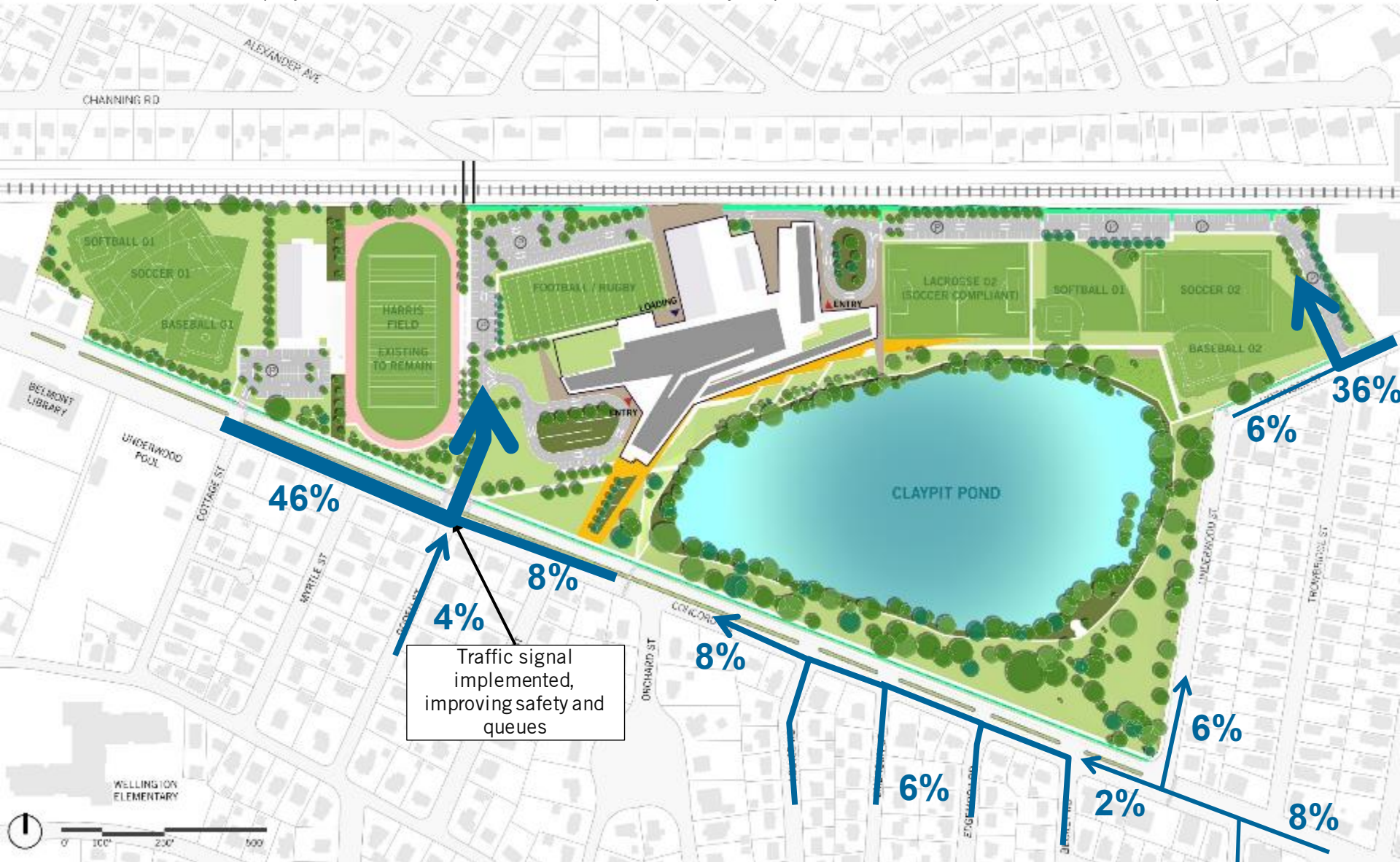


Future Conditions: Shortened Delays and Queues near Campus



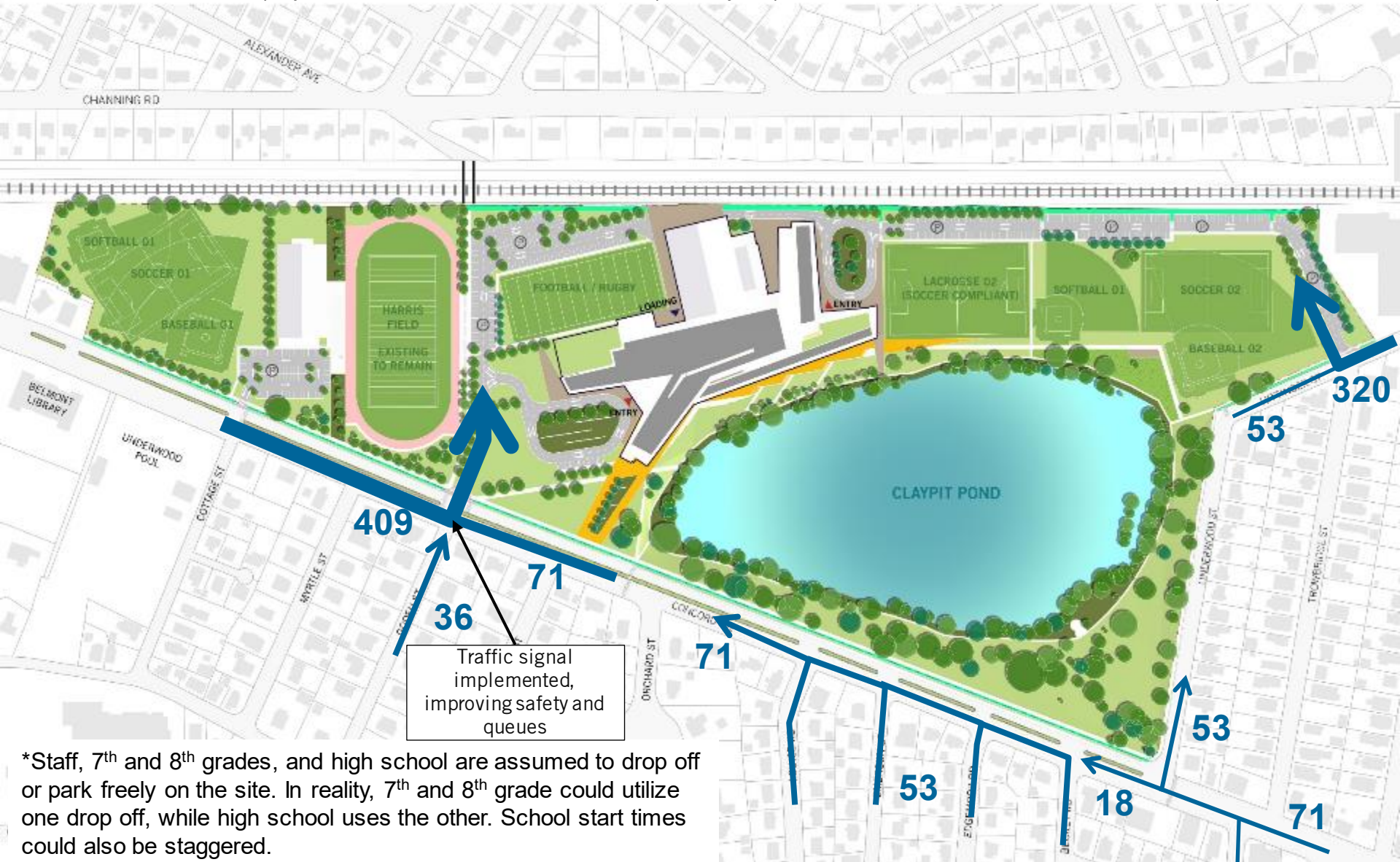
Projected Future Circulation Patterns – AM Entering Traffic

Staff mode shares projected to remain similar, students 7-8 primarily drop-off or school bus, students 9-12 walk and carpool more



Projected Future Circulation Patterns – AM Entering Traffic

Staff mode shares projected to remain similar, students 7-8 primarily drop-off or school bus, students 9-12 walk and carpool more



*Staff, 7th and 8th grades, and high school are assumed to drop off or park freely on the site. In reality, 7th and 8th grade could utilize one drop off, while high school uses the other. School start times could also be staggered.

Projected Future Circulation Patterns – AM Exiting Traffic

Staff mode shares projected to remain similar, students 7-8 primarily drop-off or school bus, students 9-12 walk and carpool more



Projected Future Circulation Patterns – AM Exiting Traffic

Staff mode shares projected to remain similar, students 7-8 primarily drop-off or school bus, students 9-12 walk and carpool more

