

Belmont Community Path Public Forum #2



Board of Selectmen



Community Path Advisory Committee (CPAC)

22 January 2014



Tonight's Agenda

Time	Item
7:00p – 7:10p	View visual stations, sign-in
7:10p – 7:40p	Opening statements
7:40p – 8:50p	Open-floor question and comment period
8:50p – 8:55p	Wrap-up statements
9:00p – 9:30p	CPAC available at visual stations
9:30p	Room reservation ends



Outline

- **Overview of Community Path Advisory Committee (CPAC)**
- Potential routes
- Security, privacy, and safety considerations



The Community Path and CPAC: Why We Are Here

- **Community Path would be safe, multi-use resource for walkers, joggers, bicyclists, inline skaters, and other basic forms of mobility**
- **The Board of Selectmen charged the CPAC in 2012 to identify potential locations for a Belmont Community Path to be used for recreation, exercise, transportation**
- **Wide range of potential benefits for a Community Path**



CPAC Membership

Name	Precinct	Role
Amy DeDeo	1	Forum Moderator
Jeffrey Roth	1	Chair
Brian Burke, Sr.	2	Business liason
John Dieckmann	3	Vice-chair
Kevin Sullivan	3	
Vince Stanton	3	
Tommasina Olson	5	
Price Armstrong	7	
Cosmo Caterino	8	
Charlie Conroy	8	
Joseph Noone	8	



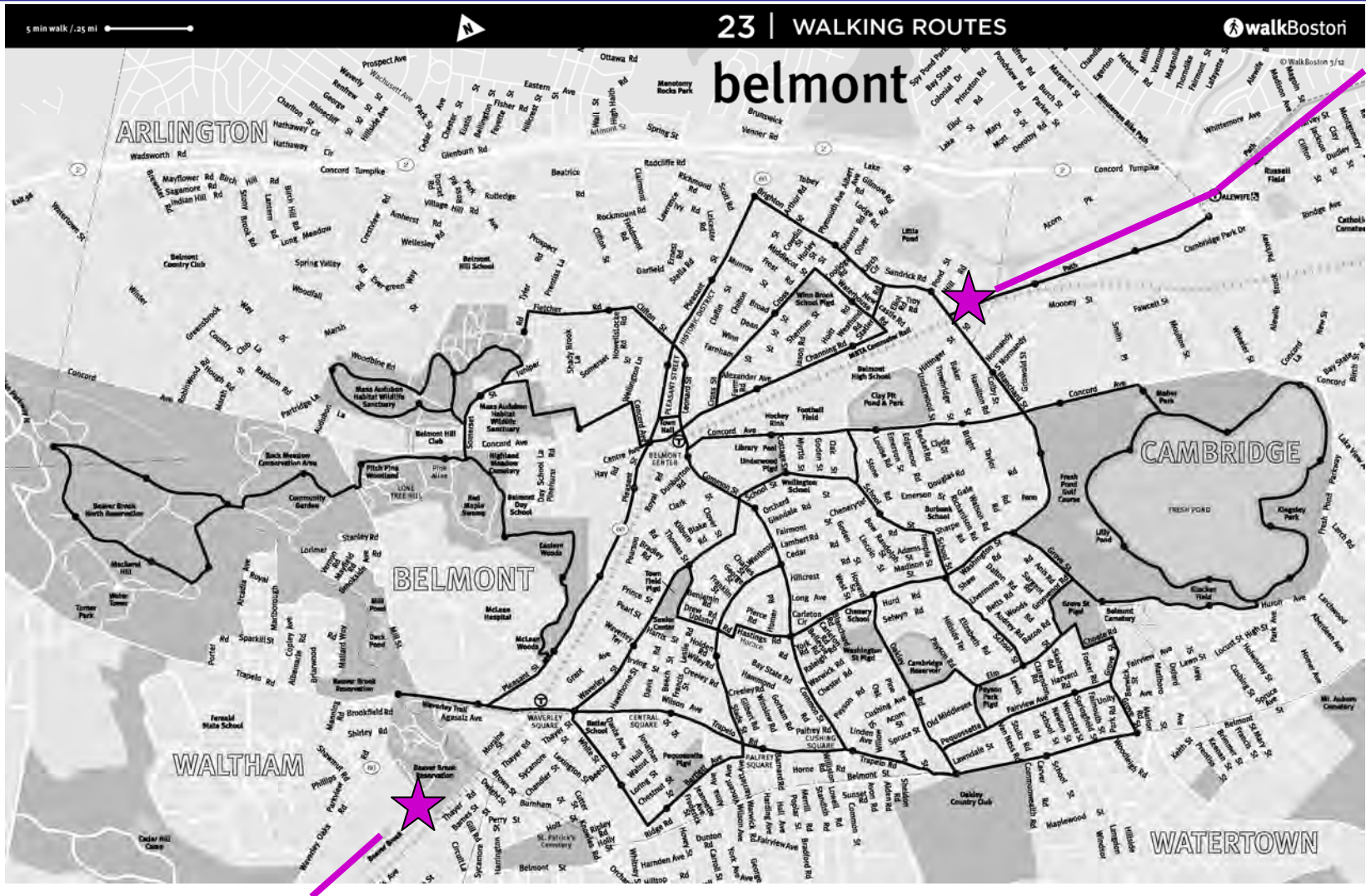
CPAC: Community Engagement to Date

- **Public Questionnaires**
- **Public Forum #1 (February 2013)**
- **Belmont Town Day and Meet Belmont booths**
- **Outreach to elementary school PTAs**
- **Publicity in local newspapers**
- **CPAC Bike Rides**
- **CPAC webpage maintained up to date**
- **CPAC list-serv**
- **Tonight's Public Forum #2**

**Significant engagement
with Belmont community by CPAC**



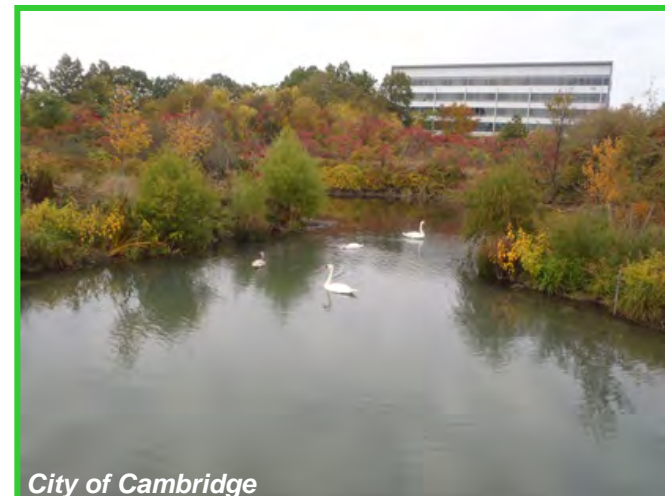
Belmont Mass Central Rail-Trail Gap





Brighton Street to Alewife Mass Central Rail-Trail

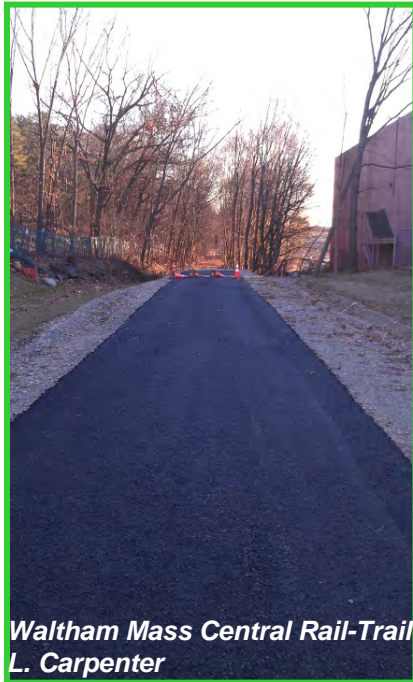
- Alewife Reservation and 0.8-mile section of Mass Central Rail-Trail opened Fall 2013
- Extends ~600 feet into Belmont
- Provides recreation and transportation resource
- Included stormwater management project





Waltham-to-Berlin Mass Central Rail-Trail

- Mass Central Rail-Trail west of Belmont moving forward
- DCR leased land from MBTA in 2011
- 23-mile segment includes Waltham, Weston, Wayland, Sudbury, Hudson, Berlin
- Short section in Waltham opened in 2013 at "1265 Main" development
- Formal paperwork filed by DCR in Nov. 2013





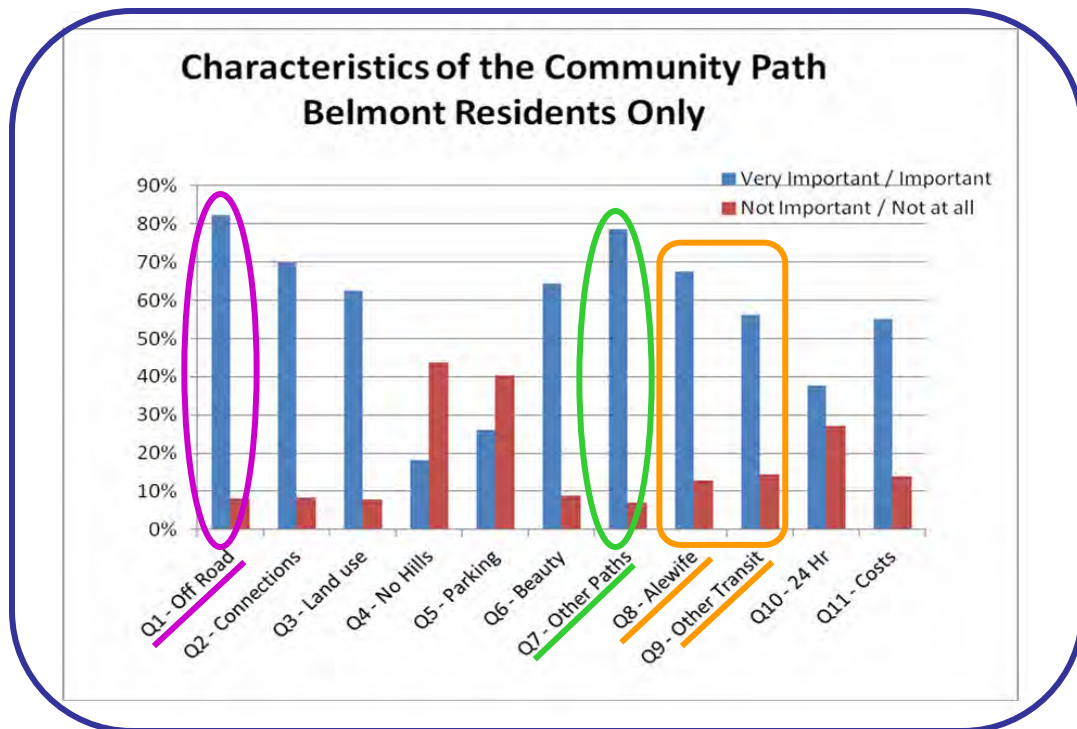
Outline

- Overview of Community Path Advisory Committee (CPAC)
- **Potential routes**
- Security, privacy, and safety considerations



Potential Routes for Belmont Community Path

- Guided by public engagement
- Site walks and stakeholder discussions
- Comprehensive evaluation process
- Report studies



- Currently focusing on approximately 15 potential route segments
- Routes include high-level design principles and not detailed engineering designs



Three Main Categories for Route Options

1. Bicycle Lane + Sidewalk





Three Main Categories for Route Options

2. Cycle Track + Sidewalk



*Cambridge, Concord Ave.
D. Loutzenheiser*



Three Main Categories for Route Options

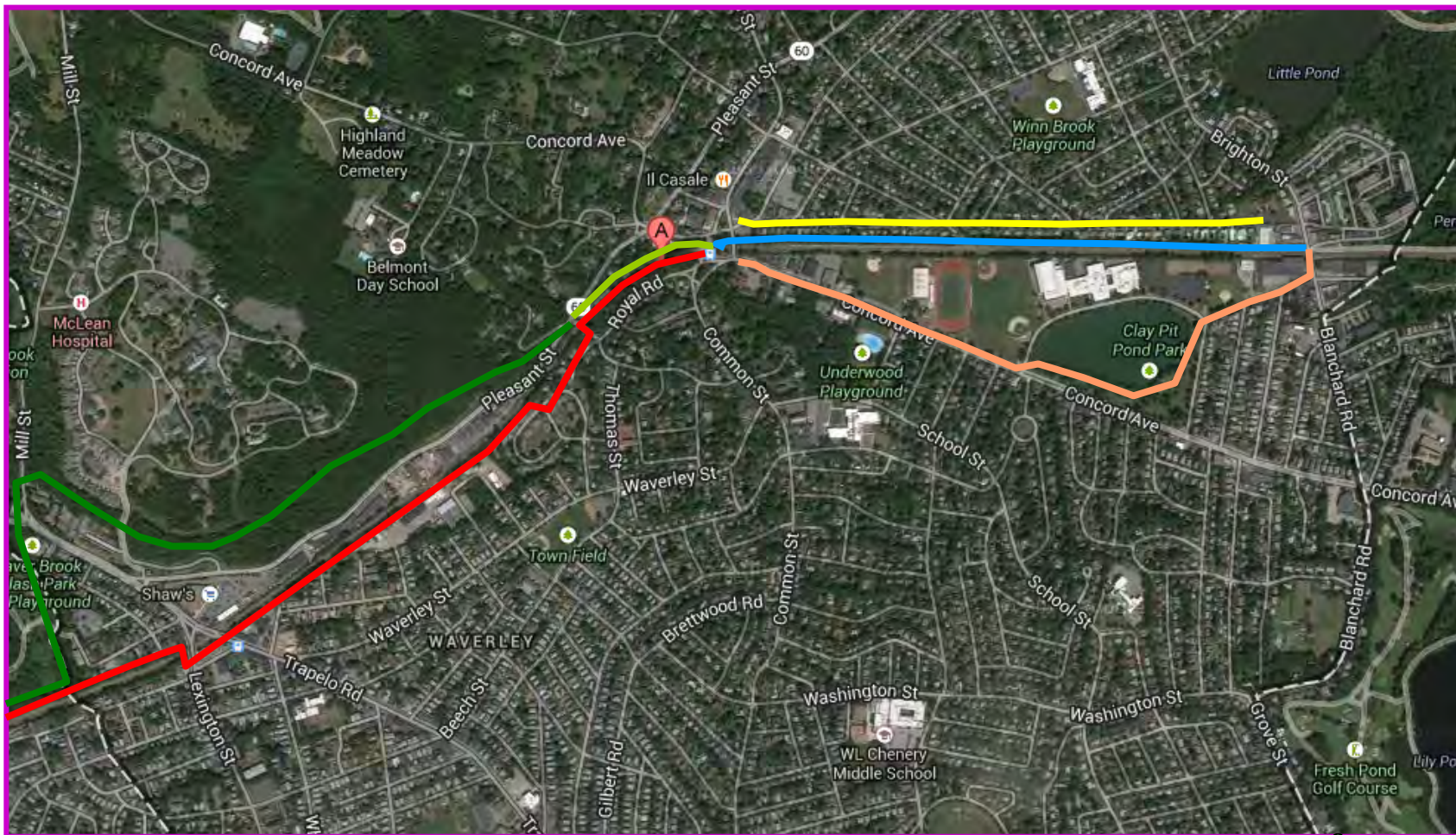
3. Off-Road Path



*Minuteman Bikeway,
Arlington*



Potential Belmont Route Segments



More route details available on CPAC webpage

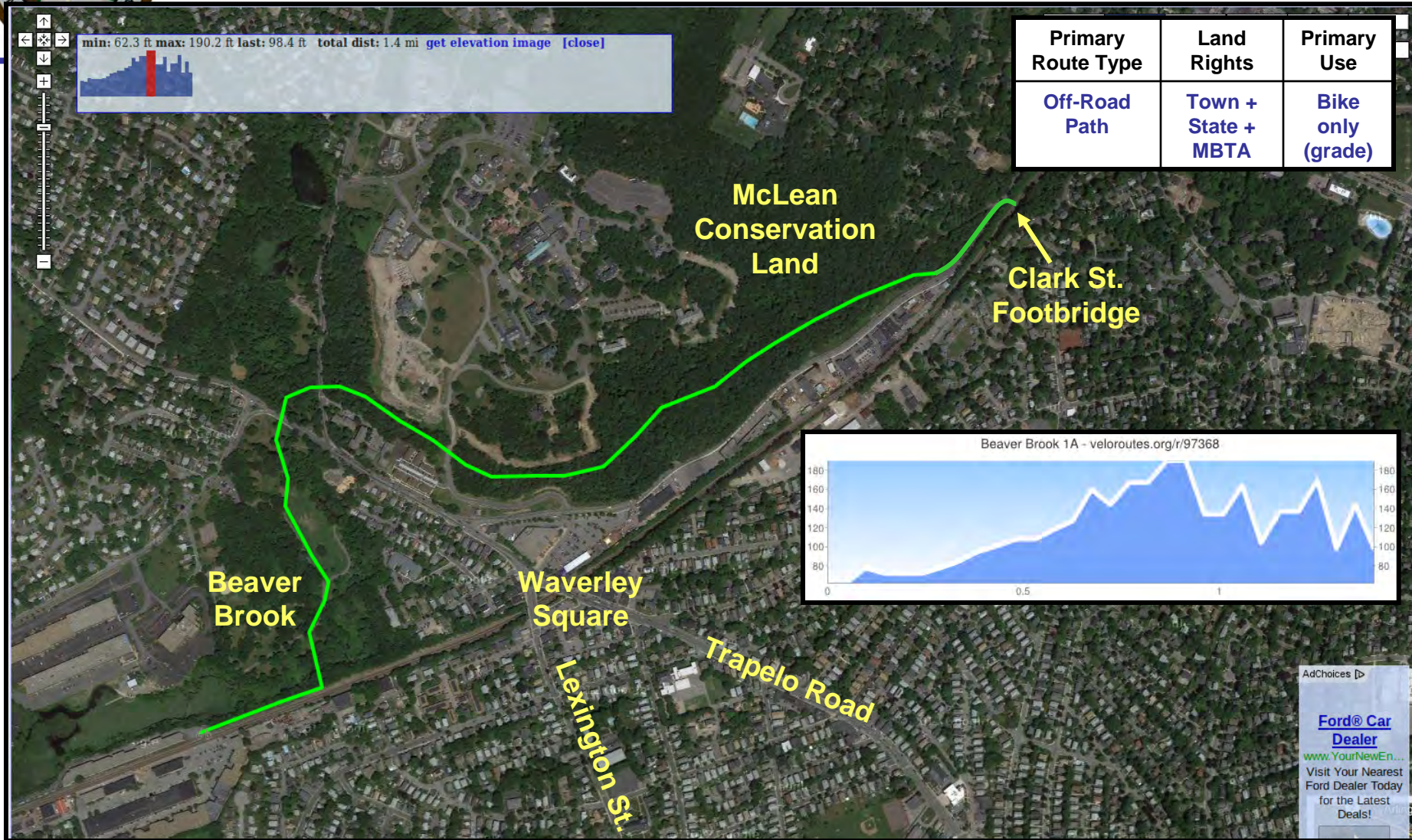


Potential West Belmont Routes

- **Goals of these routes**
 - **Connect Belmont to proposed Waltham trail**
 - **Provide walking and cycling links between Waverly Square and Belmont Center**
- **Currently investigating six potential route segments in this area**

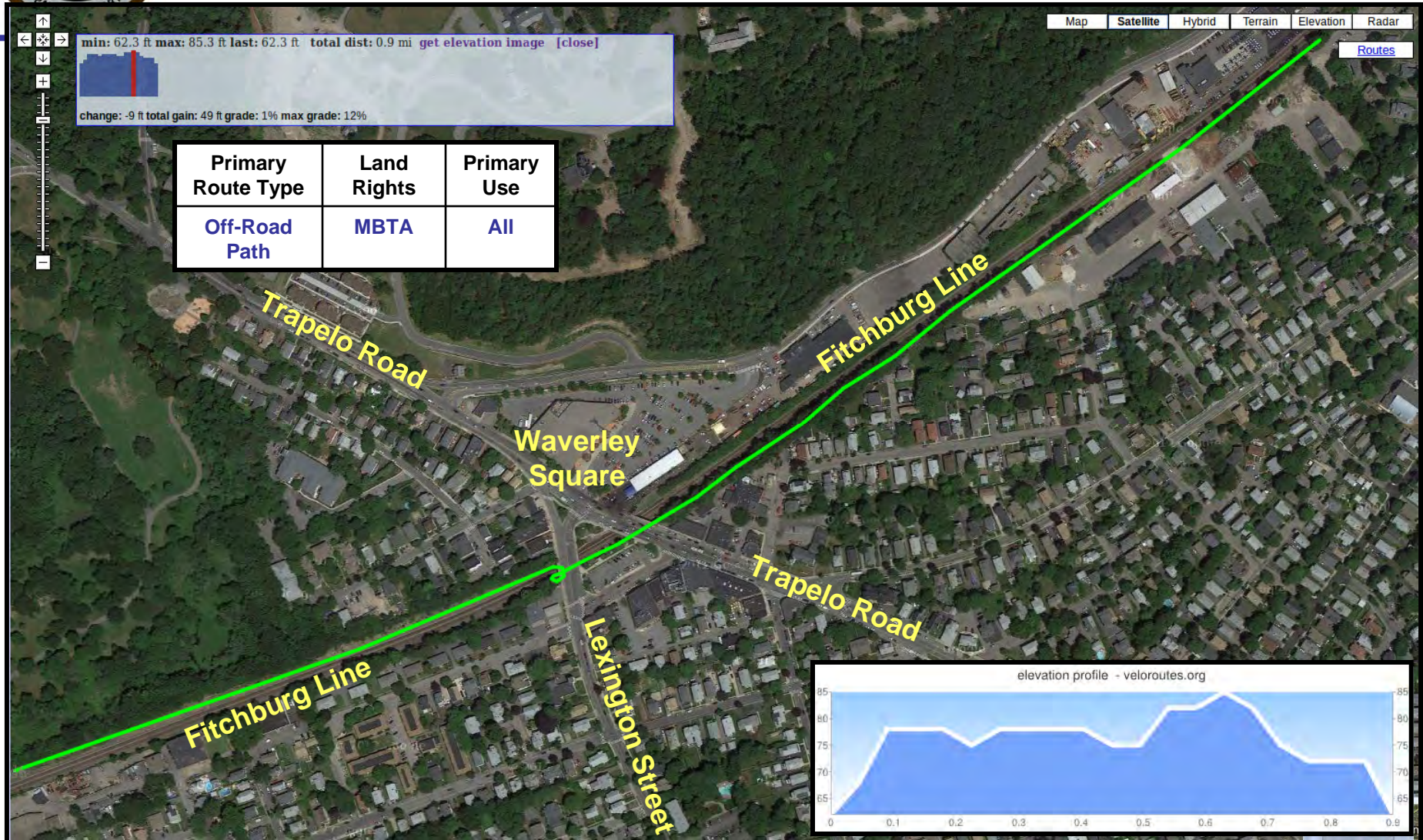


Beaver Brook and McLean (1-A and 2-D)





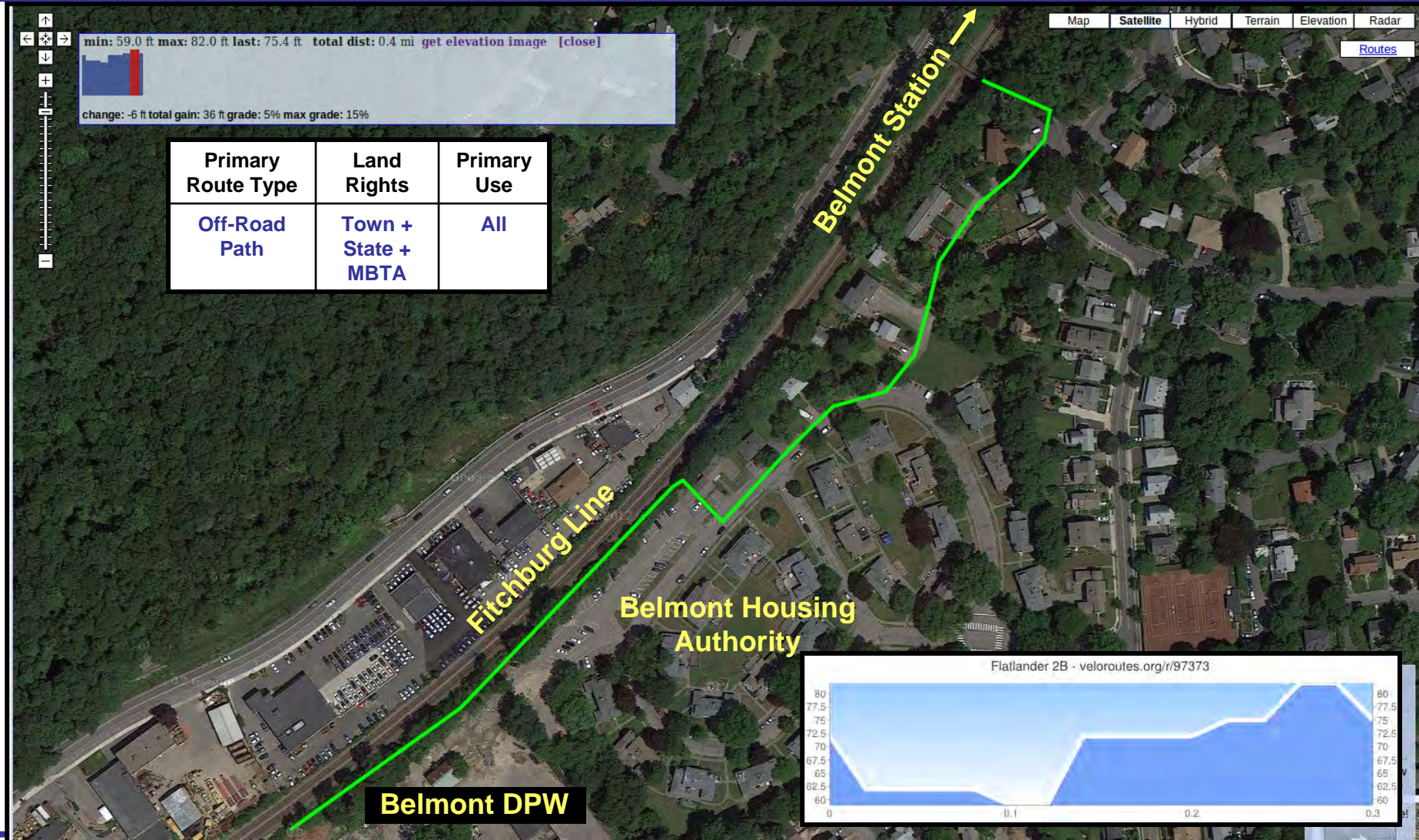
Beneath Lexington/Trapelo 1-E





Flatlander (2-B)

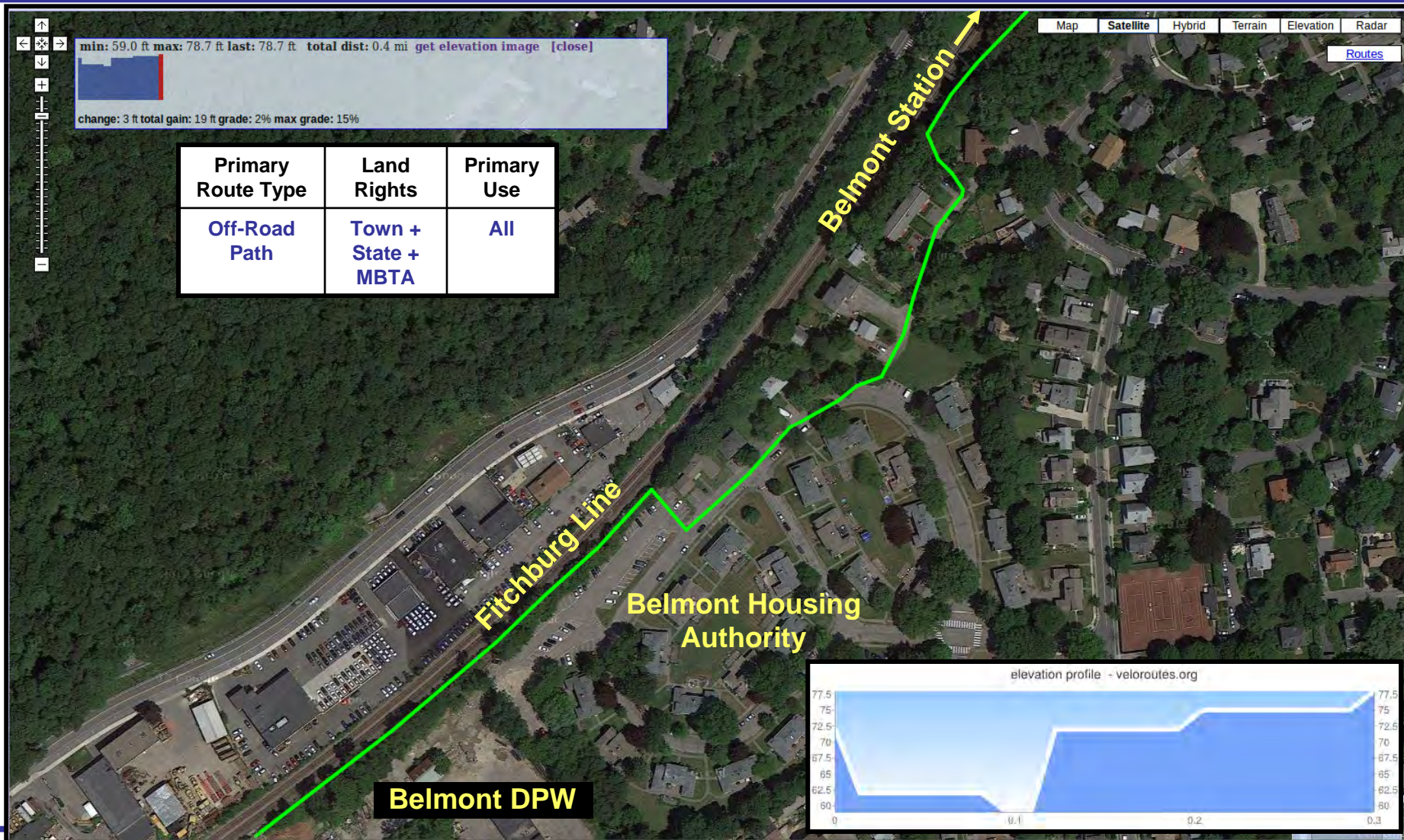
Portion of trail adjacent to Belmont Housing Authority parking lot would be off-road and could be placed between parking lot and rail-line





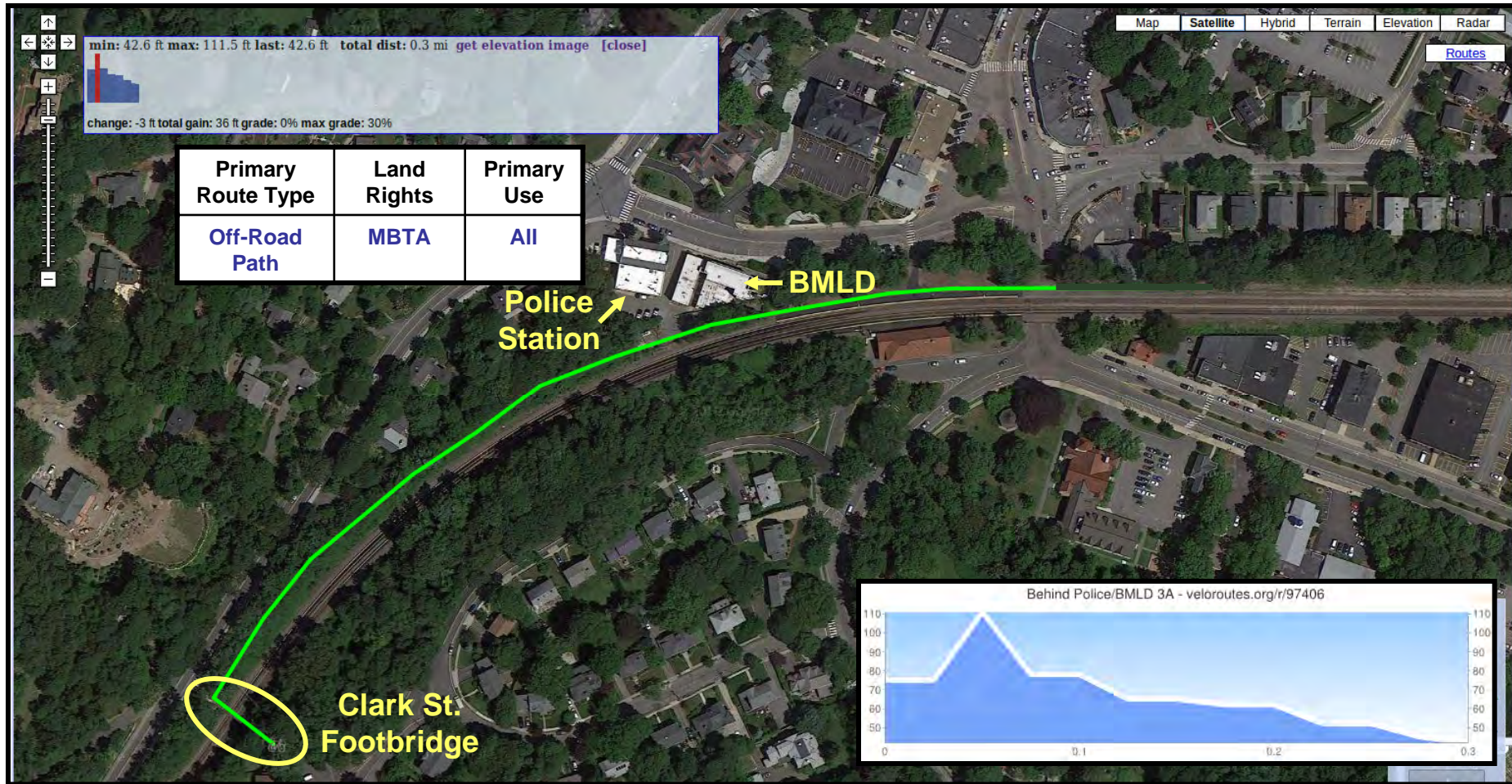
Beneath Clark Street Footbridge 2-C

Share driveway of Belmont Housing Authority #104 Clark Street to provide access between Clark Lane and trail beneath Clark Street Footbridge



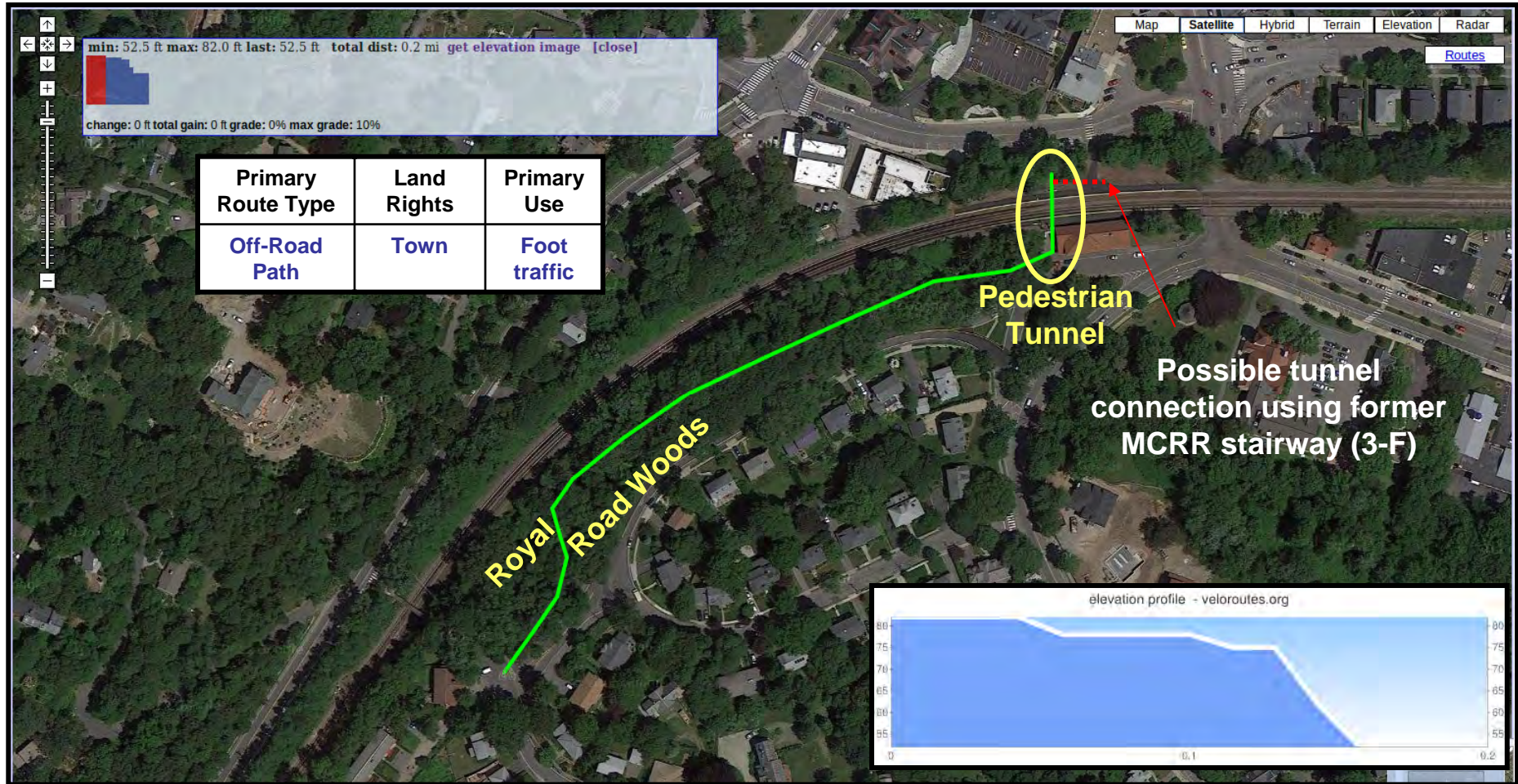


MCRR Alignment Behind Police/BMLD (3-A)





Royal Road Woods (3-C)



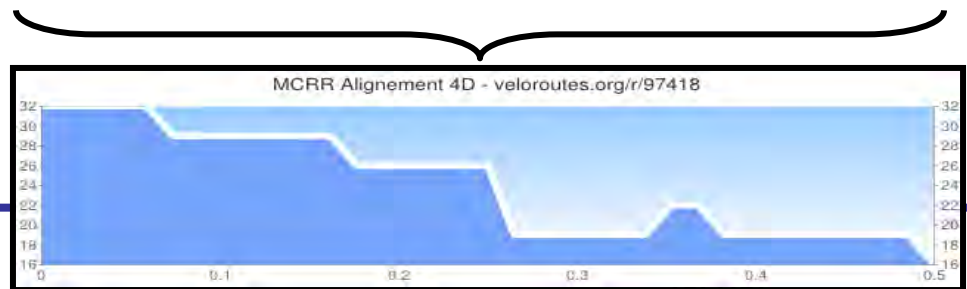
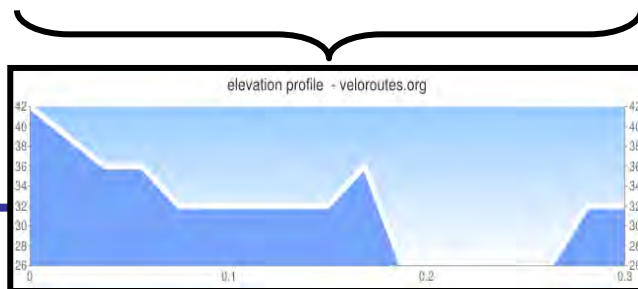
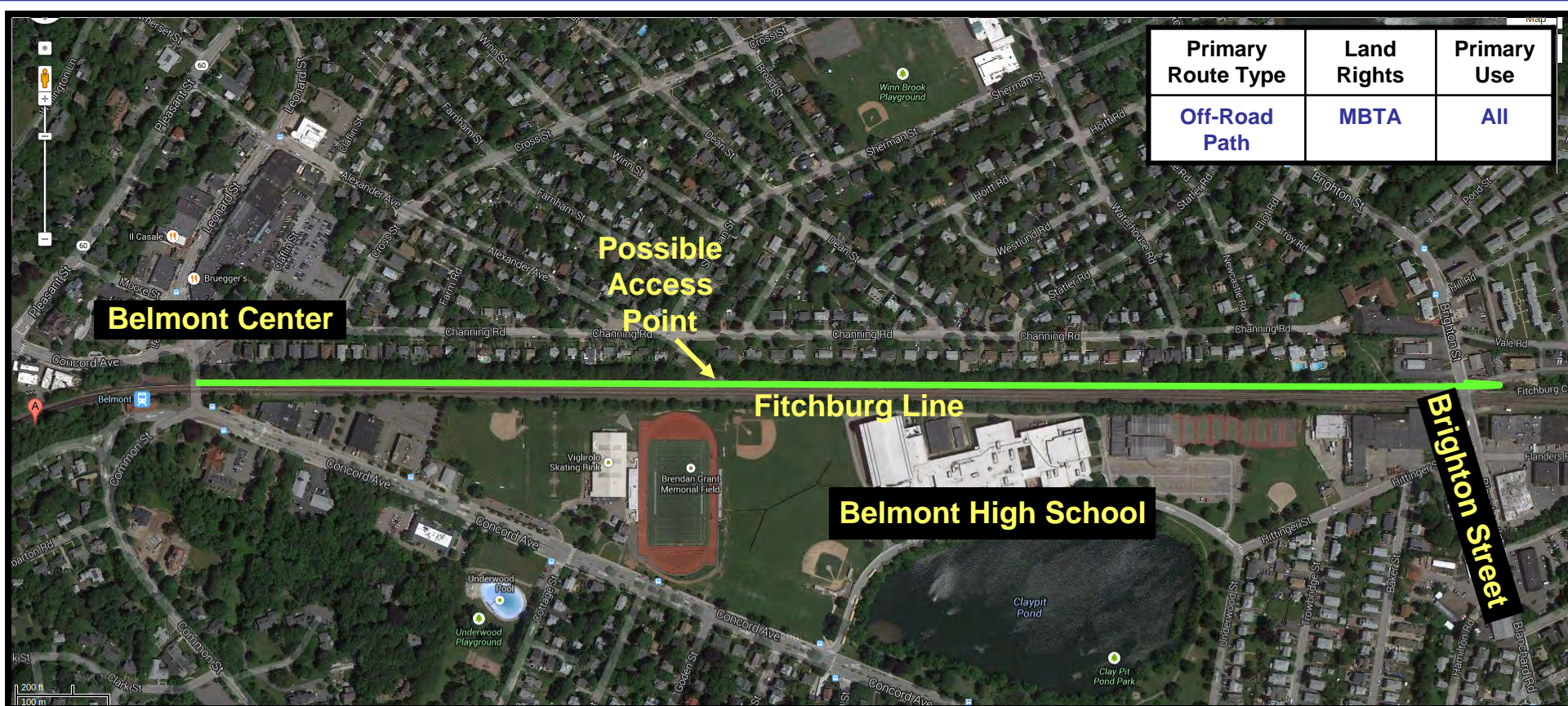


Potential East Belmont Routes

- **Goals of these routes**
 - **Connect Belmont Center region to Alewife via new, existing path at Brighton Street**
 - **Provide improved resident access to Belmont Center**
- **Currently investigating three potential route segments**



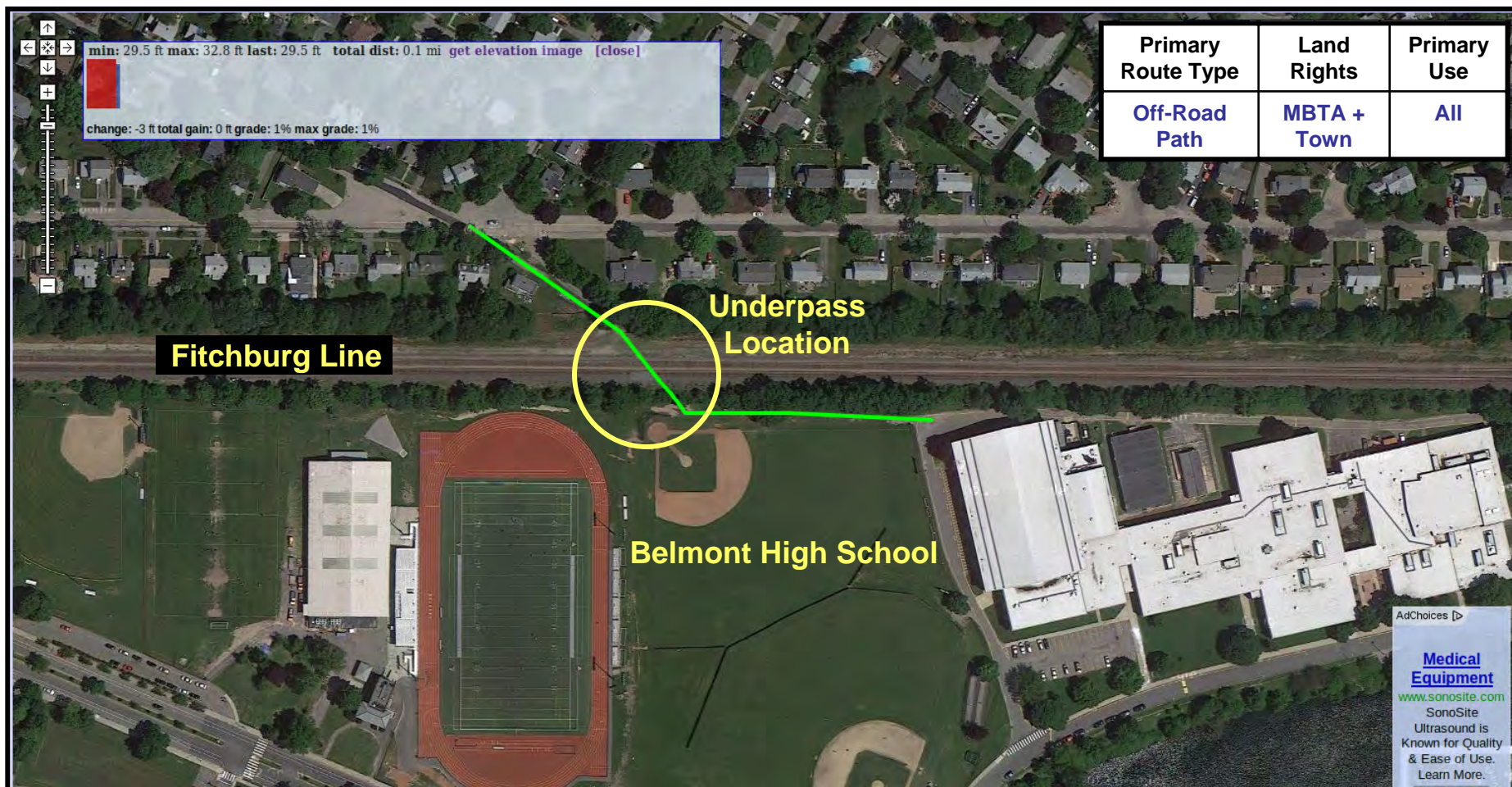
Former Mass-Central Railroad Alignment (4-CD)





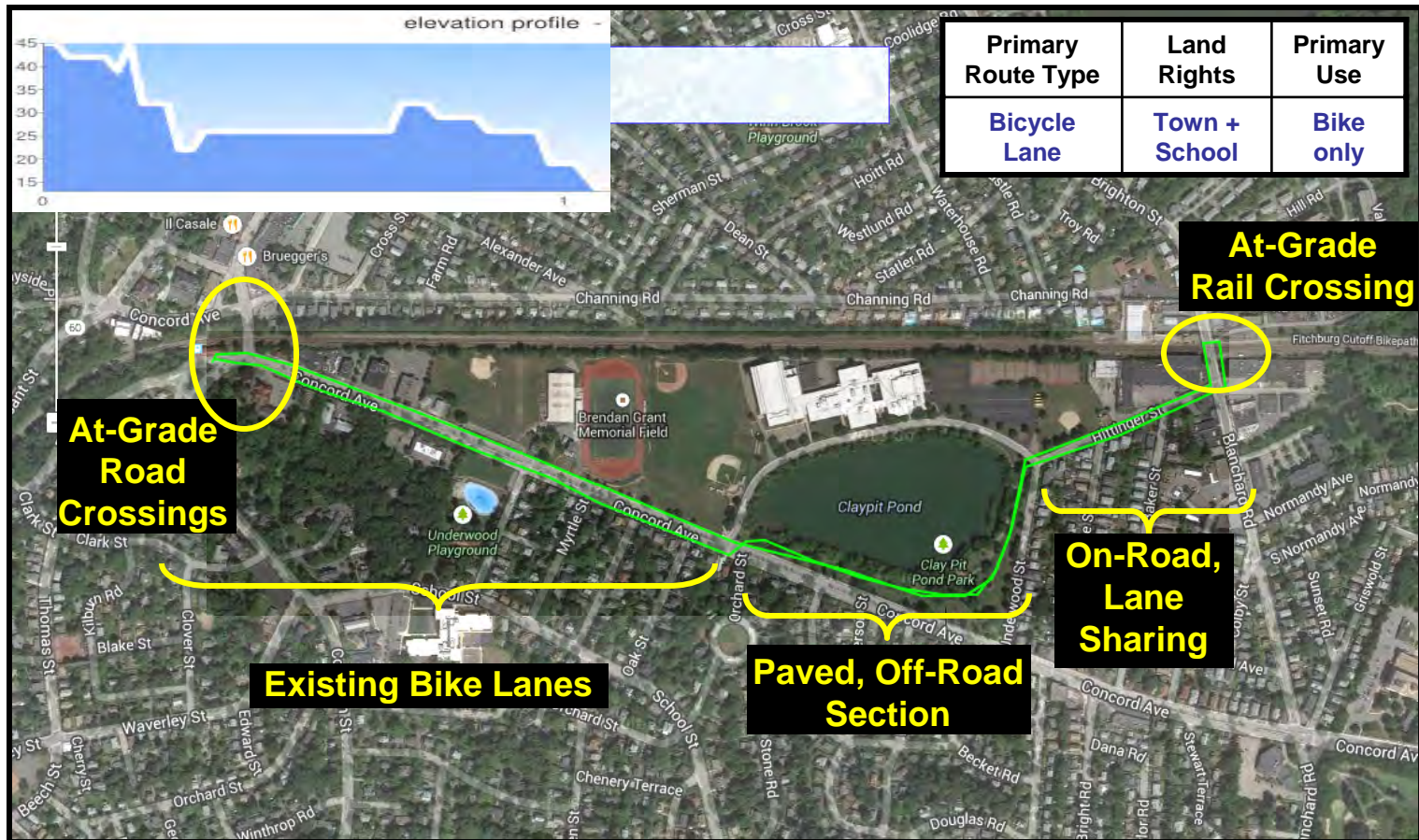
Safe Connection Between High School and Winn Brook (4-B)

Pedestrian accessway between Winn Brook neighborhood and Belmont High School via underpass of Fitchburg line





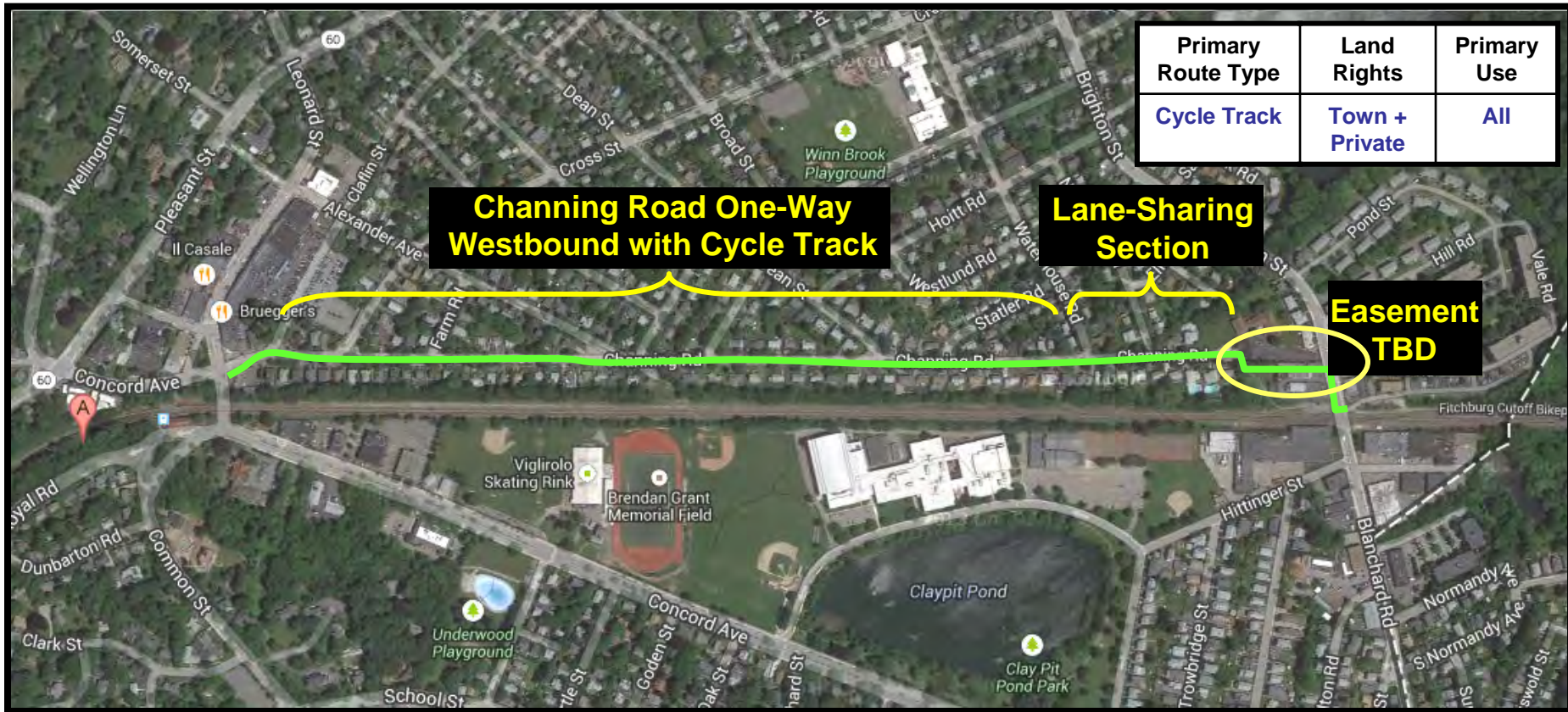
Concord Avenue / Sports Fields / High School (4-FI')



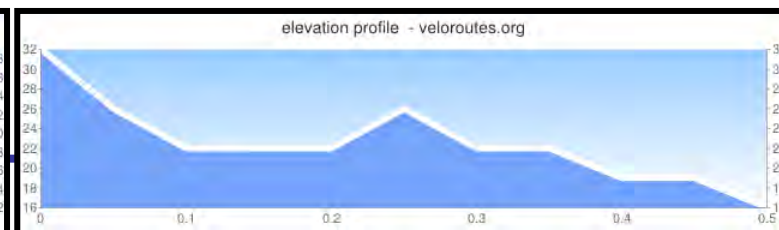
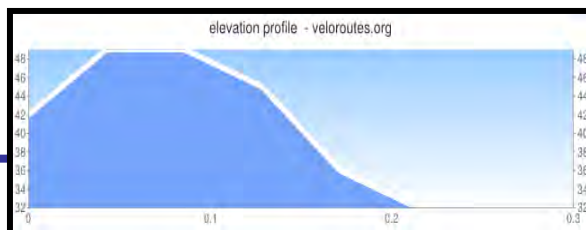
- CPAC considered cycle tracks to replace bicycle lanes on Concord Ave.
- More analysis needed to determine if safety issues can be resolved and if parking could be reduced



Channing Cycle-Track Path (4-AE)



Primary Route Type	Land Rights	Primary Use
Cycle Track	Town + Private	All





Outline

- Overview of Community Path Advisory Committee (CPAC)
- Potential routes
- **Security, privacy, and safety considerations**



Landscaping Screening Options



**Evergreen Arbor Vitae
(10 – 12' height)**



Nellie Stevens Holly Shrubs (10 – 15' height)



**Bay Laurel or Boxwood Hedges
(6 – 8' height)**



**Forsythia Shrubs
(6 – 8' height)**



**English Yew Hedges
(10 – 20' height)**



Fencing and Barrier Options



Wooden Split-Rail Fence (3 – 5' height)



Wooden Stockade Fence (6 – 8' height)



Chain-Link Fence (6' height)



High & Solid Wall



Existing Local Trails



Existing trails provide references for design considerations



Existing Local Trails

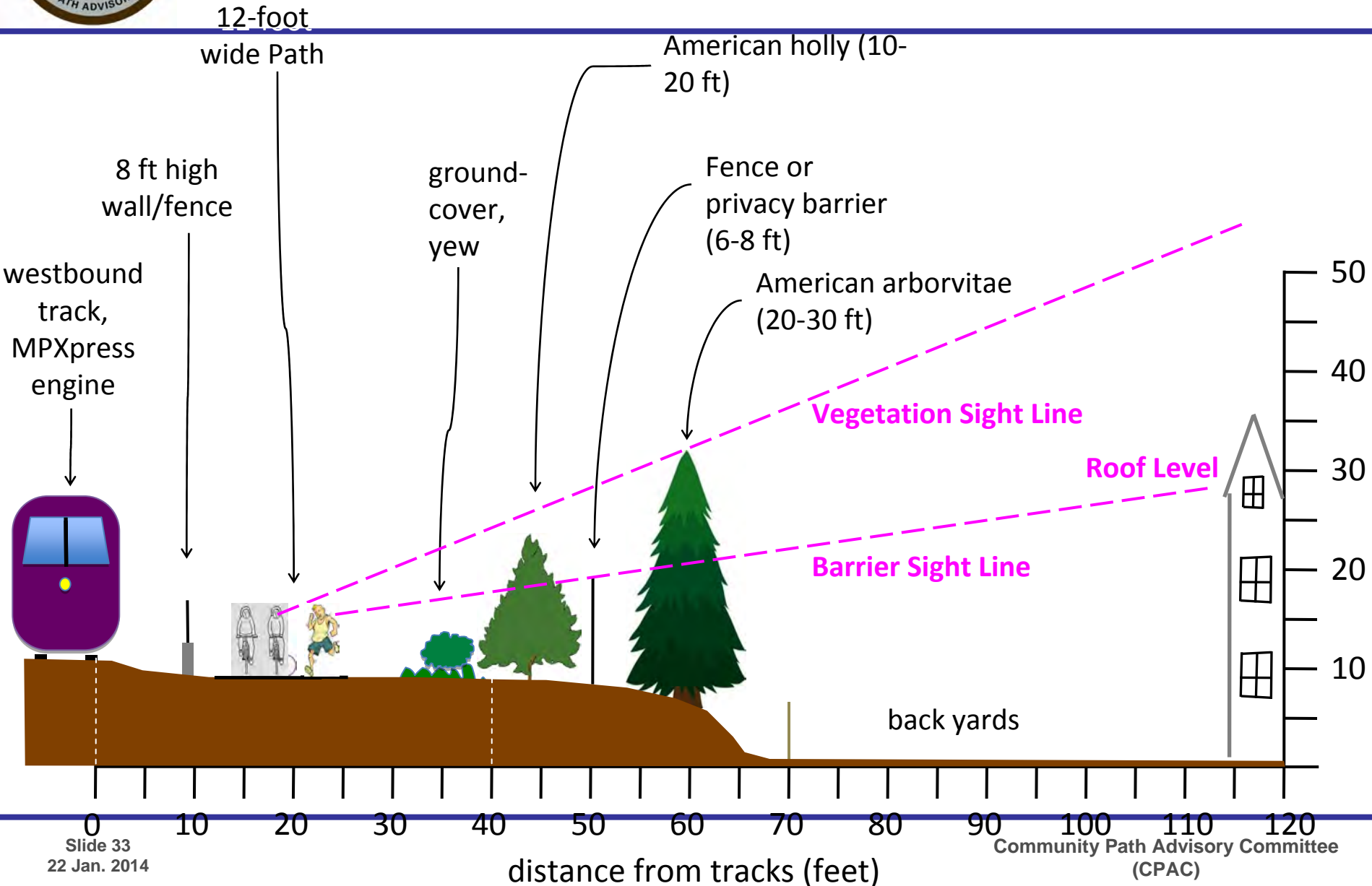


Panoramic of Minuteman Bikeway, Lexington

**Knowledge from other trails can be used to help
address issues/concerns**



Potential Design Concept for Off-Road Option in East Belmont: Cross-Sectional View





Rails-With-Trails



- All potential rail-with-trail segments would include safety barrier
- No potential routes are on the tracks
- Design of barrier could also include train sound blocking if requested by neighborhoods

CPAC only considering safe use of rail corridor for Community Path



Tonight's Agenda

Time	Item
7:00p – 7:10p	View visual stations, sign-in
7:10p – 7:40p	Opening statements
7:40p – 8:50p	Open-floor question and comment period
8:50p – 8:55p	Wrap-up statements
9:00p – 9:30p	CPAC available at visual stations
9:30p	Room reservation ends



Tonight's Agenda

Time	Item
7:00p – 7:10p	View visual stations, sign-in
7:10p – 7:40p	Opening statements
7:40p – 8:50p	Open-floor question and comment period
8:50p – 8:55p	Wrap-up statements
9:00p – 9:30p	CPAC available at visual stations
9:30p	Room reservation ends



Wrap-Up Statements

- **Remaining CPAC tasks**
- **Upcoming CPAC events**
- **Ways to get involved**
- **Next steps for Community Path would involve engineering design study to flesh out details**
- **Some CPAC members and Selectmen will remain at visual stations until 9:30p**

Thank you very much for your input and interest



Reference and Backup Slides



CPAC's Primary Missions

- 1. Gather and review all relevant existing studies and reports that could provide useful information to the Board of Selectmen regarding the Community Path**
- 2. Assess potential benefits and positive impacts of a shared-use path**
- 3. Outline all concerns and issues related to a Community Path**
- 4. Provide and rank evaluation criteria useful for evaluating potential routes**
- 5. Communicate, solicit input, and involve the Belmont community with the CPAC's work**
- 6. Deliver a report of final recommendations with proposed next steps to the Board of Selectmen for consideration of future action**



4/17/2008

Typical house setback
from rear property
line is approx. 50 feet

N

Property line

The Belmont Citizens Forum owns the land
north of the MBTA up to the property line of
Channing Road houses, on average 30.6 feet.

The MBTA owns land up to
42.5 feet from the centerline
of the westbound track.

The distance from the
northern-most rail to the
Channing Road lots is
~70.1 feet on average.

westbound trains

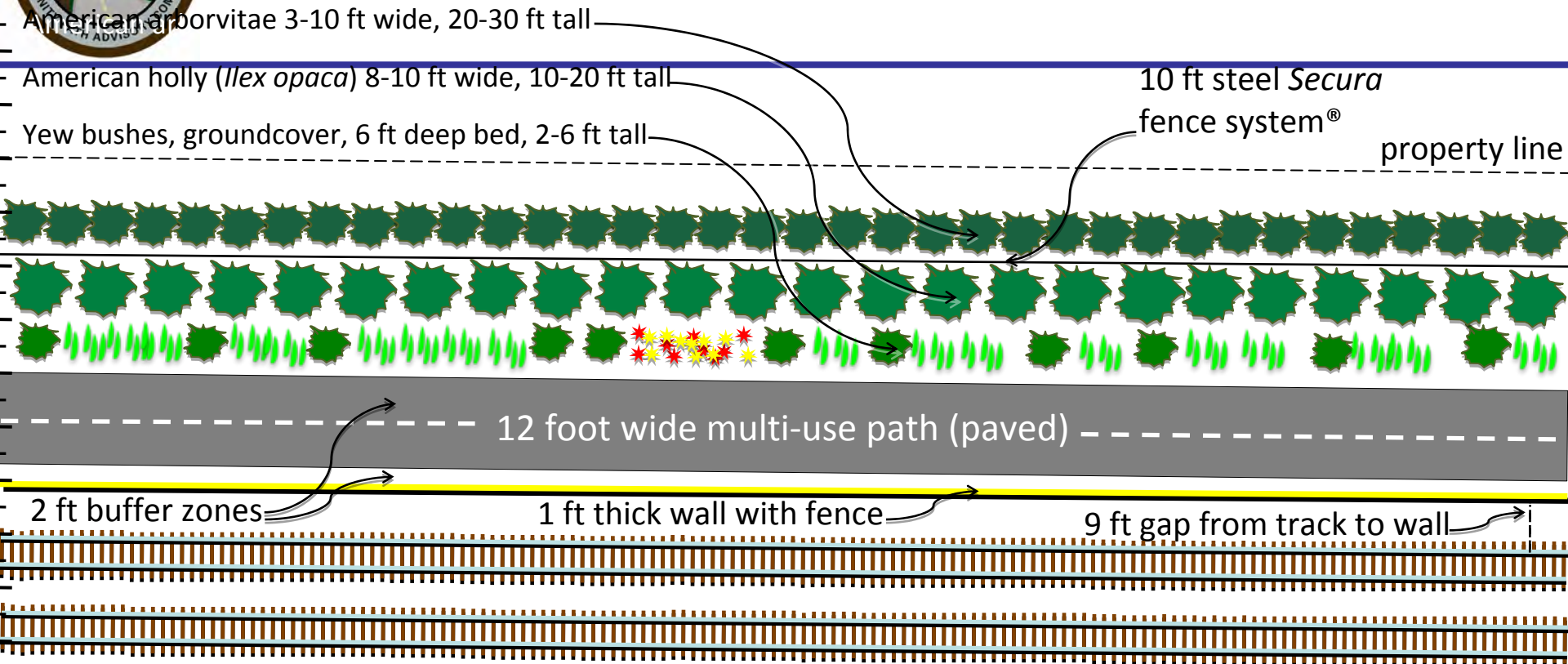
eastbound trains

Hash marks
are 5 feet

Land Arrangements along Fitchburg line in East Belmont



Potential Design Concept for Off-Road Option in East Belmont



Path for pedestrians and cyclists, with security fencing