



Stantec Consulting Services Inc.

5 Burlington Woods Drive Suite 210, Burlington MA 01803-4542

July 31, 2018

Attention: Todd Borci

US EPA Region I – New England
5 Post Office Square – Suite 100
Boston, MA 02109-3912

Subject: ORDER ON CONSENT Docket No. CWA-AO-R01-FY17-11
Report On Compliance

Dear Mr. Borci,

This July 2018 Report On Compliance (ROC) describes activities conducted from February 1, 2018 through July 31, 2018. The Wellington Brook and Winn's Brook areas are designated as sub-catchments 8 and 10, respectively. Refer to the November 2017 Investigation of the Winn's Brook and Wellington Brook Tributary Areas report for complete figures of each sub-catchment area. Approximately 630 gallons per day (GPD) of sewage were removed from the storm drain system.

Lateral Lining Contract

The Town of Belmont received bids for the 2018 Sanitary Sewer Lateral Rehabilitation Project on June 15, 2018. The project provides the Town a contractual mechanism to rehabilitate sewer services within the stringent timeline required by the Order On Consent. The contract includes lining of up to thirty-five (35) laterals. Upon the Town's notification of a sewer service(s) to be rehabilitated, the Contractor must mobilize within 30 days and complete the proposed work within 15 days of the date when the Contractor mobilized. Each notification will include from one to a maximum of five service laterals.

Sub-catchment 8-1

Completed

Dry weather flows in the junction manhole at Bow/Randolph have historically been too low to sample. In lieu of sandbagging the manhole as planned, wet weather sampling was conducted on March 30th at Bow/Randolph and other upstream manholes. The results were >30,000 E.Coli on Randolph Street, in the vicinity of Adams and Madison Streets. Dyed-water testing was conducted at houses #3 & #12 Randolph and #12 Madison, with no dye observed in the storm drain.

Planned

Complete dyed-water testing at houses #16 & #22 Randolph and #3 Adams. CCTV of service laterals and mainline as dictated by the dyed-water testing results.

Design with community in mind



July 31, 2018
Mr. Todd Borci
Page 2 of 4

Reference: CWA-AO-R01-FY17-11 Report On Compliance

Sub-catchment 8-2

Completed

CCTV inspection of an unknown 4-inch pipe connecting to the storm drain was completed. Due to the size of pipe, a push camera was required and was able to inspect approximately 75' of pipe. No defects were observed, and the pipe origin was unable to be obtained.

Belmont has decided to redirect the 4-inch pipe into the adjacent sanitary sewer. Construction documents were developed, and the Town is currently soliciting quotations from qualified contractors to complete the work.

Planned

Construction to remove the 4-inch pipe from the storm drain system and redirect into the sanitary sewer. Outfall verification sampling will be conducted upon construction completion.

Sub-catchment 8-5

Completed

CCTV inspection identified a major collapse in the sanitary sewer on Homer Road. The storm drain in this area is located below the sewer in the same trench. Therefore, sewage exfiltrating from the broken sewer main will migrate directly into the storm drain below.

Stantec prepared construction documents and the sewer was successfully repaired on June 13, 2018 at cost of \$8,500. As shown in the photo, construction revealed a hole in the storm drain below the broken sewer, which was also repair. The record plan for the repair is attached.

There are three houses upstream of the repair. Based on the most recent data from the MWRA, up to 630 GPD (210 gallons per house) of sewage was removed from the storm drain.

Review of CCTV inspection for #11 Pierce Road and #12 Brettwood Road confirmed the services were suitable for CIP lining (both were previously identified as indirect connections).



Planned

Service laterals for #11 Pierce Road and #12 Brettwood Road will be lined under the Town's 2018 Sanitary Sewer Lateral Rehabilitation contract. Outfall verification sampling will be conducted upon construction completion.

Design with community in mind



July 31, 2018
Mr. Todd Borci
Page 3 of 4

Reference: CWA-AO-R01-FY17-11 Report On Compliance

Sub-catchment 8-6 (Figures 1 & 2)

Completed

CCTV inspection of an unknown 8-inch pipe connecting to the storm drain on Maple Street was completed. Due to the configuration of the manhole, a push camera was required and was able to inspect approximately 66' of pipe. No defects were observed, and the pipe origin was unable to be obtained.

CCTV video was reviewed for the storm drain on Bartlett Ave. and the sewer on Vincent Ave. The video was incomplete and inconclusive due to obstructions and bends in the pipe.

Planned

The Town is considering alternate methods to determine the origin of the pipe on Maple Street. The pipe is potentially an abandoned underdrain from construction of the storm drain and/or sanitary sewer systems and the depth of the pipe does not allow for gravity connection to the sanitary sewer.

Access to the storm drain system on Bartlett Ave. is extremely limited, which will make dyed-water tracing difficult. The Town is considering construction of additional storm drain manholes or proactive rehabilitation of mainline sewers and service laterals crossing over the storm drain.

Sub-catchment 10-2 (Figure 3)

Completed

Review of CCTV inspection for #37, #43 and #49 Hoitt Road confirmed the services were suitable for CIP lining.

Planned

Service laterals for #37, #43 and #49 Hoitt Road will be lined under the Town's 2018 Sanitary Sewer Lateral Rehabilitation contract. Outfall verification sampling will be conducted upon construction completion.

ADDITIONAL INVESTIGATIONS

Concurrent with the work described above, additional investigations have been conducted in areas tributary to outfalls 2, 11, 11A, and 12. Although these investigations are not required by the Order On Consent, it is important to the Town of Belmont to share the results of all illicit connection investigations with the EPA and DEP.



July 31, 2018
Mr. Todd Borci
Page 4 of 4

Reference: CWA-AO-R01-FY17-11 Report On Compliance

Outfall Area 2

Completed

Dyed-water testing was conducted at houses #58 and #64 Betts Road. Downstream sewer and storm drain manholes were monitored at Dalton Road. Dye was observed entering the sewer manhole only, no dye was observed entering the storm drain manhole.

Planned

Conduct further sampling, followed by dyed-water testing and CCTV as required.

Outfall Areas 11, 11A & 12

Completed

Completed CCTV inspection of two (2) main line sewer sections and nine (9) sewer laterals on Oliver Road.

Planned

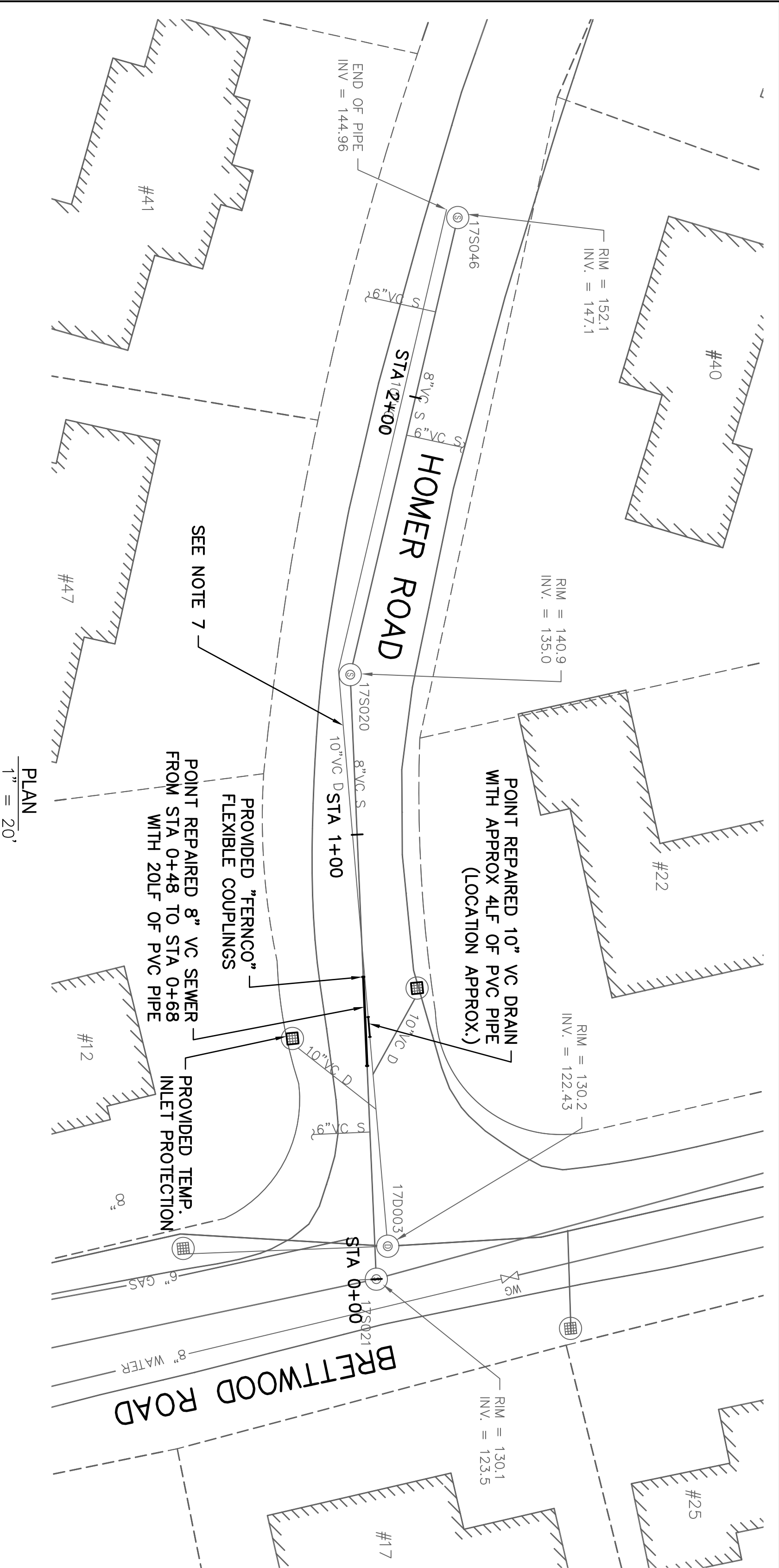
Complete design of sewer rehabilitation in the Oliver Road area.

Please contact me if you have any questions regarding the information contained in this report.

Regards,
STANTEC CONSULTING SERVICES INC.

Justin D. Gould, P.E.
Senior Associate
Phone: (781) 221-1083
Justin.Gould@stantec.com

sb(v:\1951\active\195150438\epa order on consent\compliance reports\7-31-2018 submittal\report_on_compliance_july2018.docx



- GENERAL NOTES:**
1. THIS PLAN HAS BEEN COMPILED FROM EXISTING TOWN RECORD PLANS AND ON SITE OBSERVATIONS.

2. THE LOCATIONS OF EXISTING UTILITIES ARE APPROXIMATE ONLY. ACTUAL LOCATIONS IN THE FIELD MAY BE DIFFERENT. STANTEC DOES NOT WARRANT, NOR GUARANTEE THE LOCATIONS OF ALL EXISTING UTILITIES DEPICTED OR NOT DEPICTED. CONTRACTOR SHALL PROVIDE SUPPORT AND PROTECTION OF UTILITIES AS REQUIRED.

3. LOCATIONS OF EXISTING UTILITIES ON HOMER ROAD (ASIDE FROM SANITARY SEWER AND STORM DRAIN) ARE UNKNOWN.

4. THE CONTRACTOR SHALL NOTIFY DIGSAFE AT LEAST 72 HOURS PRIOR TO ANY EXCAVATION WORK.

5. THE TOWN OF BELMONT IS NOT A MEMBER OF DIGSAFE AND MUST BE NOTIFIED DIRECTLY AT LEAST 72 HOURS PRIOR TO THE START OF WORK.

6. ALL DISTURBED AREAS BEYOND PAYMENT LIMITS SHALL BE RESTORED AT NO ADDITIONAL COST TO OWNER.

7. WHILE EXCAVATING, THE CONTRACTOR SHALL PAY CAUTION TO THE EXISTING DRAIN LINE ON HOMER ROAD. PER TOWN RECORD DRAWINGS, BOTH THE SEWER LINE AND DRAIN LINE WERE INSTALLED IN THE SAME TRENCH AND AT SIMILAR VERTICAL ALIGNMENTS.

8. WHERE NEW PAVEMENT MEETS EXISTING PAVEMENT, THE JOINTS SHALL BE SAWCUT TO A NEAT

9. ALL ELEVATIONS ARE REFERRED TO CITY OF BOSTON BASE (5.65 BELOW THE NATIONAL GEODETIC VERTICAL DATUM OF 1929) DATUM.

10. THE CONTRACTOR SHALL PROVIDE DUST CONTROL FOR EXCAVATION AND CONSTRUCTION OPERATIONS.

17S046

17S020

17D003

17S021

117S046

17S020

17D003

17S021

117S046

17S020

17D003

17S021

117S046

17S020

17D003

17S021

117S046

17S020

17D003

17S021

117S046

17S020

17D003

17S021

117S046

17S020

17D003

17S021

117S046

17S020

17D003

17S021

117S046

17S020

17D003

17S021

117S046

17S020

17D003

17S021

117S046

17S020

17D003

17S021
- 117S046

17S020

17D003

17S021
- 117S046

17S020

17D003

17S021
- 117S046

17S020

17D003

17S021
- 117S046

17S020

17D003

17S021

117S046

17S020

17D003

17S021

117S046

17S020

17D003

17S021

117S046

17S020

17D003

17S021

117S046

17S020

17D003

17S021

117S046

17S020

17D003

17S021

117S046

17S020

17D003

17S021

117S046

17S020

17D003

17S021

117S046

17S020

17D003

17S021

117S046

17S020

17D003

17S021

117S046

17S020

17D003

17S021

117S046

17S020

17D003

17S021

117S046

17S020

17D003

17S021

117S046

17S020

17D003

17S021

117S046

17S020

17D003

17S021

117S046

17S020

17D003

17S021

117S046

17S020

17D003

17S021

117S046

17S020

17D003

17S021

117S046

17S020

17D003

17S021

117S046

17S020

17D003

17S021

117S046

17S020

17D003

17S021

117S046

17S020

17D003

17S021

117S046

17S020

17D003

17S021

117S046

17S020

17D003

17S021

117S046

17S020

17D003

17S021

117S046

17S020

17D003

17S021

117S046

17S020

17D003

17S021

117S046

17S020

17D003

17S021

117S046

17S020

17D003

17S021

117S046

17S020

17D003

17S021

117S046

17S020

17D003

17S021

117S046

17S020

17D003

17S021

117S046

17S020

17D003

17S021

117S046

17S020

17D003

17S021

117S046

17S020

17D003

17S021

117S046

17S020

17D003

17S021

117S046

17S020

17D003

17S021

117S046

17S020

17D003

17S021

117S046

17S020

17D003

17S021

117S046

17S020

17D003

17S021

117S046

17S020

17D003

17S021

117S046

17S020

17D003

17S021

117S046

17S020

17D003

17S021

117S046

17S020

17D003

17S021

117S046

17S020

17D003

17S021

117S046

17S020

17D003

17S021

117S046

17S020

17D003

17S021

117S046

17S020

17D003

17S021

117S046

17S020

17D003

17S021

117S046

17S020

17D003

17S021

117S046

17S020

17D003

17S021

117S046

17S020

17D003

17S021

117S046

17S020

17D003

17S021

117S046

17S020

17D003

17S021

117S046

17S020

17D003

17S021

117S046

17S020

17D003

17S021

117S046

17S020

17D003

17S021

117S046

17S020

17D003

17S021

117S046

17S020

17D003

17S021

117S046

17S020

17D003

17S021

117S046

17S020

17D003

17S021

117S046

17S020

17D003

17S021

117S046

17S020

17D003

17S021

117S046

17S020

17D003

17S021

117S046

17S020

17D003

17S021

117S046

17S020

17D003

17S021

117S046

17S020

17D003

17S021

117S046

17S020

17D003

17S021

117S046

17S020

17D003

17S021

117S046

17S020

17D003

17S021

117S046

17S020

17D003

17S021

117S046

17S020

17D003

17S021

117S046

17S020

17D003

17S021

117S046

17S020

17D003

17S021

117S046

17S020

17D003

17S021

117S046

17S020

17D003

17S021

117S046

17S020

17D003

17S021

117S046

17S020

17D003

17S021

117S046

17S020

17D003

17S021

117S046

17S020

17D003

17S021

117S046

17S020

17D003

17S021

117S046

17S020

17D003

17S021

117S046

17S020

17D003

17S021

117S046

17S020

17D003

17S021

117S046

17S020

17D003

17S021

117S046

17S020

17D003

17S021

117S046

17S020

17D003

17S021

117S046

17S020

17D003

17S021

117S046

17S020

17D003

17S021

117S046

17S020

17D003

17S021

117S046

17S020

17D003

17S021

117S046

17S020

17D003

17S021

117S046

17S020

17D003

17S021

117S046

17S020

17D003

17S021

117S046

17S020

17D003

17S021

117S046

17S020

17D003

17S021

117S046

17S020

17D003

17S021

117S046

17S020

17D003

17S021

117S046

17S020

17D003

17S021

117S046

17S020

17D003

17S021

117S046

17S020

17D003

17S021

117S046

17S020

17D003

17S021

117S046

17S020

17D003

17S021

117S046

17S020

17D003

17S021

117S046

17S020

17D003

17S021

117S046

17S020

17D003

17S021

117S046

17S020

17D003

17S021

117S046

17S020

17D003

17S021

117S046

17S020

17D003

17S021

117S046

17S020

17D003

17S021

117S046

17S020

17D003

17S021

117S046

17S020

17D003

17S021

117S046

17S020

17D003

17S021

117S046

17S020

17D003

17S021

117S046

17S020

17D003

17S021

117S046

17S020

17D003

17S021

117S046

17S020

17D003

17S021

117S046

17S020

17D003

17S021

117S046

17S020

17D003

17S021

117S046

17S020

17D003

17S021

117S046

17S020

17D003

17S021

117S046

17S020

17D003

17S021

117S046

17S020

17D003

17S021

117S046

17S020

17D003

17S021

117S046

17S020

17D003

17S021

117S046

17S020

17D003

17S021

117S046

17S020

17D003

17S021

117S046

17S020

17D003

17S021

117S046

17S020

17D003

17S021

117S046

17S020

17D003

17S021

117S046

17S020

17D003

17S021

117S046

17S020

17D003

17S021

117S046

17S020

17D003

17S021

117S046

17S020

17D003

17S021

117S046

17S020

17D003

17S021

117S046

17S020

17D003

17S021

117S046

17S020

17D003

17S021

117S046

17S020

17D003

17S021

117S046

17S020

17D003

17S021

117S046

17S020

17D003

17S021

117S046

17S020

17D003

17S021

117S046

17S020

17D003

17S021

117S046

17S020

17D003

17S021

117S046

17S020

17D003

17S021

117S046

17S020

17D003

17S021

117S046

17S020

17D003

17S021

117S046

17S020

17D003

17S021

117S046

17S020

17D003

17S021

117S046

17S020

17D003

17S021

117S046

17S020

17D003

17S021

117S046

17S020

17D003

17S021

117S046

17S020

17D003

17S021

117S046

17S020

17D003

17S021

117S046

17S020

17D003

17S021

117S046

17S020

17D003

17S021

117S046

17S020

17D003

17S021

117S046

17S020

17D003

17S021

117S046

17S020

17D003

17S021

117S046

17S020

17D003

17S021

117S046

17S020

17D003

17S021

117S046

17S020

17D003

17S021

117S046

17S020

17D003

17S021

117S046

17S020

17D003

17S021

117S046

17S020

17D003

17S021

117S046

17S020

17D003

17S021

117S046

17S020

17D003

17S021

117S046

17S020

17D003

17S021

117S046

17S020

17D003

17S021

117S046

17S020

17D003

17S021

117S046

17S020

17D003

17S021

117S046

17S020

17D003

17S021

117S046

17S020

17D003

17S021

117S046

17S020

17D003

17S021

117S046

17S020

17D003

17S021

117S046

17S020

17D003

17S021

117S046

17S020

17D003

17S021

117S046

17S020

17D003

17S021

117S046

17S020

17D003

17S021

117S046

17S020

17D003

17S021

117S046

17S020

17D003

17S021

117S046

17S020

17D003

17S021

117S046

17S020

17D003

17S021

117S046

17S020

17D003

17S021

117S046

17S020

17D003

17S021

117S046

17S020

17D003

17S021

117S046

17S020

17D003

17S021

117S046

17S020

17D003

17S021

117S046

17S020

17D003

17S021

117S046

17S020

17D003

17S021

117S046

17S020

17D003

17S021

117S046

17S020

17D003

17S021

117S046

17S020

17D003

17S021

117S046

17S020

17D003

17S021

117S046

17S020

17D003

17S021

117S046

17S020

17D003

17S021

117S046

17S020

17D003

17S021

117S046

17S020

17D003

17S021

117S046

17S020

17D003

17S021

117S046

17S020

17D003

17S021

117S046

17S020

17D003

17S021

117S046

17S020

17D003

17S021

117S046

17S020

17D003

17S021

117S046

17S020

17D003

17S021

117S046

17S020

17D003

17S021

117S046

17S020

17D003

17S021

117S046

17S020

17D003

17S021

117S046

17S020

17D003

17S021

117S046

17S020

17D003

17S021

117S046

17S020

17D003

17S021

117S046

17S020

17D003

17S021

117S046

17S020

17D003

17S021

117S046

17S020

17D003

17S021

117S046

17S020

17D003

17S021

117S046

17S020

17D003

17S021

117S046

17S020

17D003

17S021

117S046

17S020

17D003

17S021

117S046

17S020

17D003

17S021

117S046

17S020

17D003

17S021

117S046

17S020

17D003

17S021

117S046

17S020

17D003

17S0